

DreamScreen BLE Commands

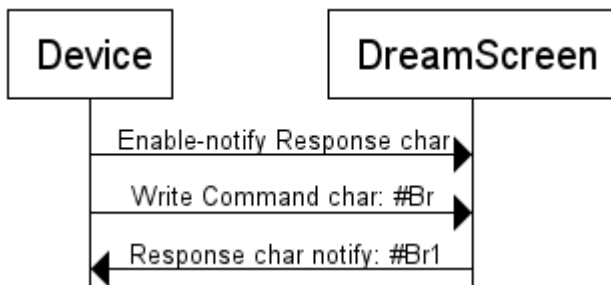
DreamScreen has a primary service UUID of `0000ff60-0000-1000-8000-00805f9b34fb`.

Service Characteristics

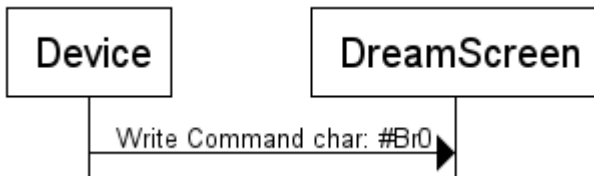
The DreamScreen exposes three characteristics:

- **Command char:** UUID `0000ff61-0000-1000-8000-00805f9b34fb` (Read/Write)
- **Response char:** UUID `0000ff62-0000-1000-8000-00805f9b34fb` (Read/Write/Notify)
- **Name char:** UUID `0000ff63-0000-1000-8000-00805f9b34fb` (Read/Write)

Example: Read Mode from DreamScreen



Example: Write Mode Idle



Read Commands

A read command must contain the following fields.

Bytes	Name	Description
1	#	Denotes the start of a command
2	propertyID	A character representing a specific property.
3	r	Signifies the command will read.
4	\r	Denotes the end of command.

Write Commands

A write command contains the following fields:

Bytes	Name	Description
1	#	Denotes the start of a command
2	propertyID	An uppercase character representing a specific property.
3	w	Signifies the command will write.
4 - 12	writeData	Data values to be written. The quantity of bytes required depends on the property. Minimum 1 byte, maximum 9 bytes.
Last	\r	Denotes the end of command.

Mode

propertyID	Read/Write	Write Data	Data Description
B	r/w	0	Idle Mode
		1	Video Mode
		2	Music Mode
		3	Ambient Static Mode
		4	Identify Mode
		5	Ambient Show Mode

Brightness

propertyID	Read/Write	Write Data	Data Description
C	r/w	000 - 100	Brightness Value Total 3 bytes

Zone

propertyID	Read/Write	Write Data	Data Description
D	r/w	nnnn-yyyy	[Top][Bottom][Left][Right] n = zone off, y = zone on. Total 4 bytes

Ambient Color

propertyID	Read/Write	Write Data	Data Description
E	r/w	(000-255) (000-255) (000-255)	RGB values. Total 9 bytes

Saturation

propertyID	Read/Write	Write Data	Data Description
F	r/w	(000-255) (000-255) (000-255)	RGB values. Total 9 bytes

SKU

propertyID	Read/Write	Write Data	Data Description
G	r/w	0	Classic
		1	Mega
		2	Xtreme
		3	Custom

Custom LED Count

First parameter (008-032) defines the number of vertical LEDs. The second parameter (014-060) defines the number of horizontal LEDs. The last parameter (x) defines the starting point and rotation of how the LEDs are installed, referenced from the front of the TV. Total 7 bytes of write data.

propertyID	Read/Write	Write Data	Write Data Description
H	r/w	(008-032) (014-060) (a)	Right, Counter-clockwise
		(008-032) (014-060) (b)	Top, Counter-clockwise
		(008-032) (014-060) (c)	Left, Counter-clockwise
		(008-032) (014-060) (d)	Bottom, Counter-clockwise
		(008-032) (014-060) (e)	Right, Clockwise
		(008-032) (014-060) (f)	Top, Clockwise
		(008-032) (014-060) (g)	Left, Clockwise
		(008-032) (014-060) (h)	Bottom, Clockwise

Music Mode Type

propertyID	Read/Write	Write Data	Write Data Description
J	r/w	0	Type 1, Top and bottom to middle
		1	Type 2, Middle to top and bottom
		2	Type 3, Bottom corners to top
		3	Type 4, Bottom to top

Music Mode Color

propertyID	Read/Write	Write Data	Write Data Description
K	r/w	(0-2) (0-2) (0-2)	[Treble][Middle][Bass] 0=red, 1=green, 2=blue Total 3 bytes

Video Minimum Intensity

propertyID	Read/Write	Write Data	Write Data Description
L	r/w	(000-050) (000-050) (000-050)	[Red][Green][Blue] Total 9 bytes

Ambient Show Type

propertyID	Read/Write	Write Data	Write Data Description
M	r/w	0	Colors
		1	Fire
		2	Twinkle
		3	Ocean
		4	Rainbow
		5	July 4th
		6	Holiday
		7	Pop
		8	Enchanted Forest

Fade Rate

propertyID	Read/Write	Write Data	Write Data Description
N	r/w	(004-050)	Fade rate

Version Number

propertyID	Read/Write	Write Data	Write Data Description
O	r	(00-99) (00-99)	Read only. Total 4 bytes

Music Mode Weights

propertyID	Read/Write	Write Data	Write Data Description
P	r/w	(025-005) (025-005) (025-005)	[Treble][Middle][Bass] Total 9 bytes

Name Char

Name Characteristic holds the name of the DreamScreen stick. It defaults to DreamScreen and may be changed to Living Room, Bedroom, etc. This char is readable and writable.