



Augusta, GA



Disclaimer: While every effort is made to keep information provided over the internet accurate and up-to-date, Augusta does not certify the authenticity or accuracy of such information. No warranties, express or implied, are provided for the records and/or mapping data herein, or for their use or interpretation by the User.

Map Scale
1 inch = 491 feet
2/3/2015

~~Paramount Ct~~
Paramount Ct
Augusta, GA



Disclaimer: While every effort is made to keep information provided over the internet accurate and up-to-date, Augusta does not certify the authenticity or accuracy of such information. No warranties, express or implied, are provided for the records and/or mapping data herein, or for their use or interpretation by the User.

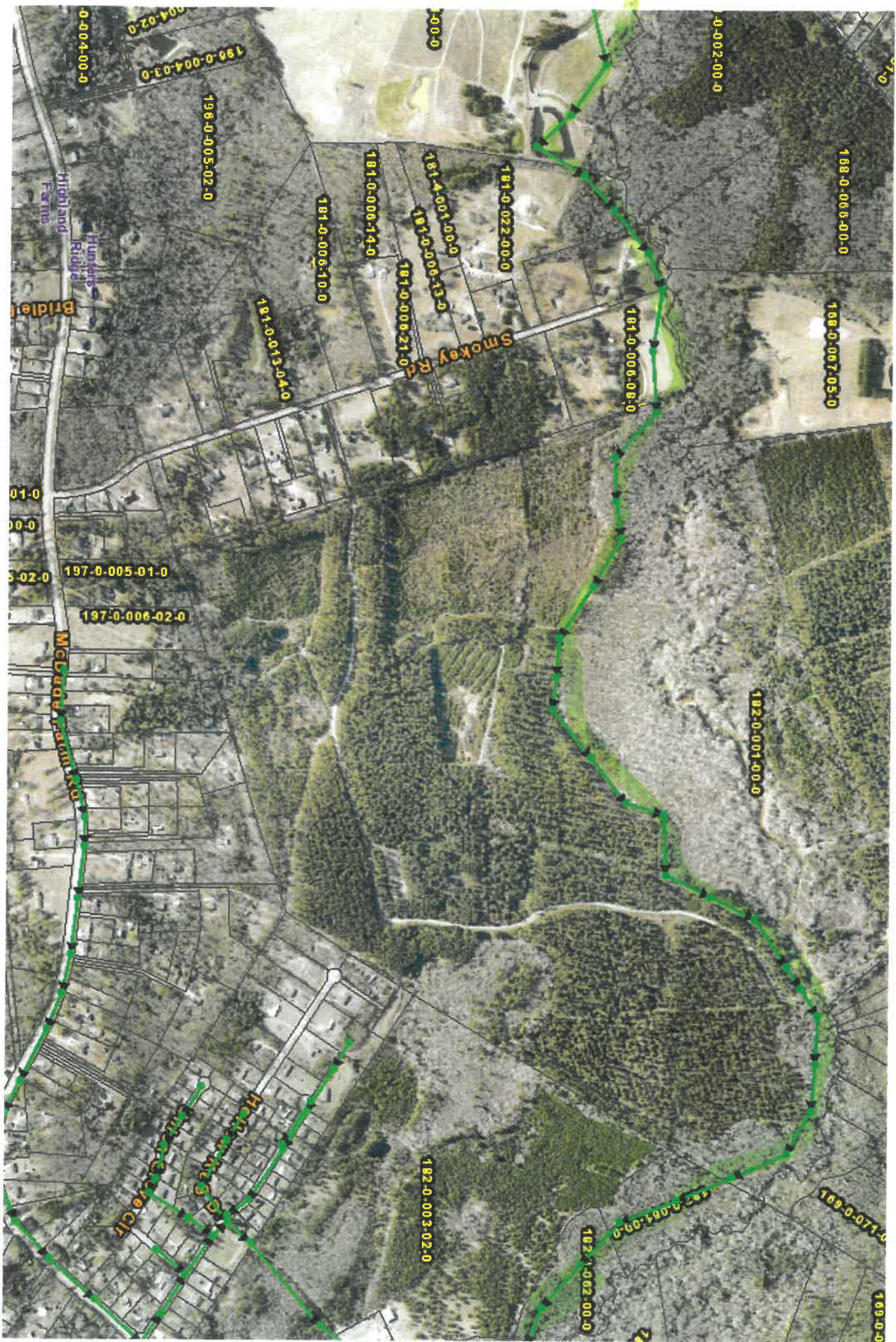
Map Scale
1 inch = 327 feet
4/4/2013

Augusta, GA



Disclaimer: While every effort is made to keep information provided over the internet accurate and up-to-date, Augusta does not certify the authenticity or accuracy of such information. No warranties, express or implied, are provided for the records and/or mapping data herein, or for their use or interpretation by the User.

Map Scale
1 inch = 327 feet
4/4/2013









145-0-008-00-0

144-0-021-00-0

144-0-033-02-0

144-1-001-00-0

144-0-022-00-0

144-0-023-00-0

144-0-024-00-0

156-0-001-00-0

156-0-010-00-0

156-0-014-00-0

156-0-104-00-0

155-0-000-00-0

156-0-065-00-0

156-0-030-00-0

156-0-077-01-0

156-0-077-01-1

157-0-035-00-1

157-0-045-05-0

157-0-015-02-0

157-0-008-00-0

145-0-008-00-0

145-0-153-00-0

145-0-023-00-0

145-0-024-00-0

145-0-

145-0-

145-0-033-03-0

145-0-012-01-0

145-0-016-00-0

145-0-010-00-0

157-0-002-02-0

157-0-002-05-0

157-0-003-00-0

157-0-002-04-0

157-0-002-00-0

157-0-004-03-0

157-0-004-02-0

157-0-010-00-0

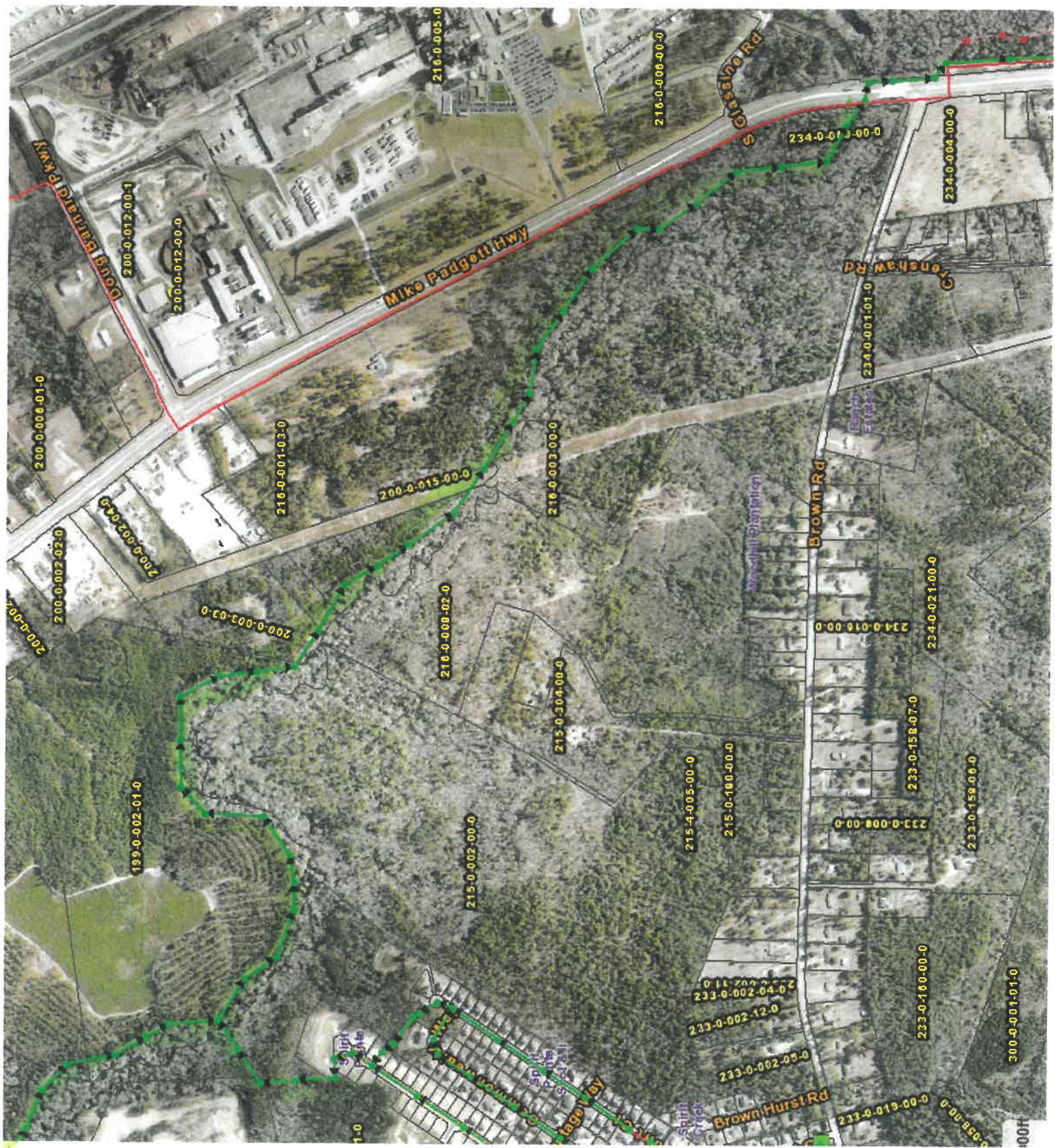
157-0-005-00-0

157-0-

156-0-047-03-0

156-0-077-01-0





MAP 1

Augusta, GA



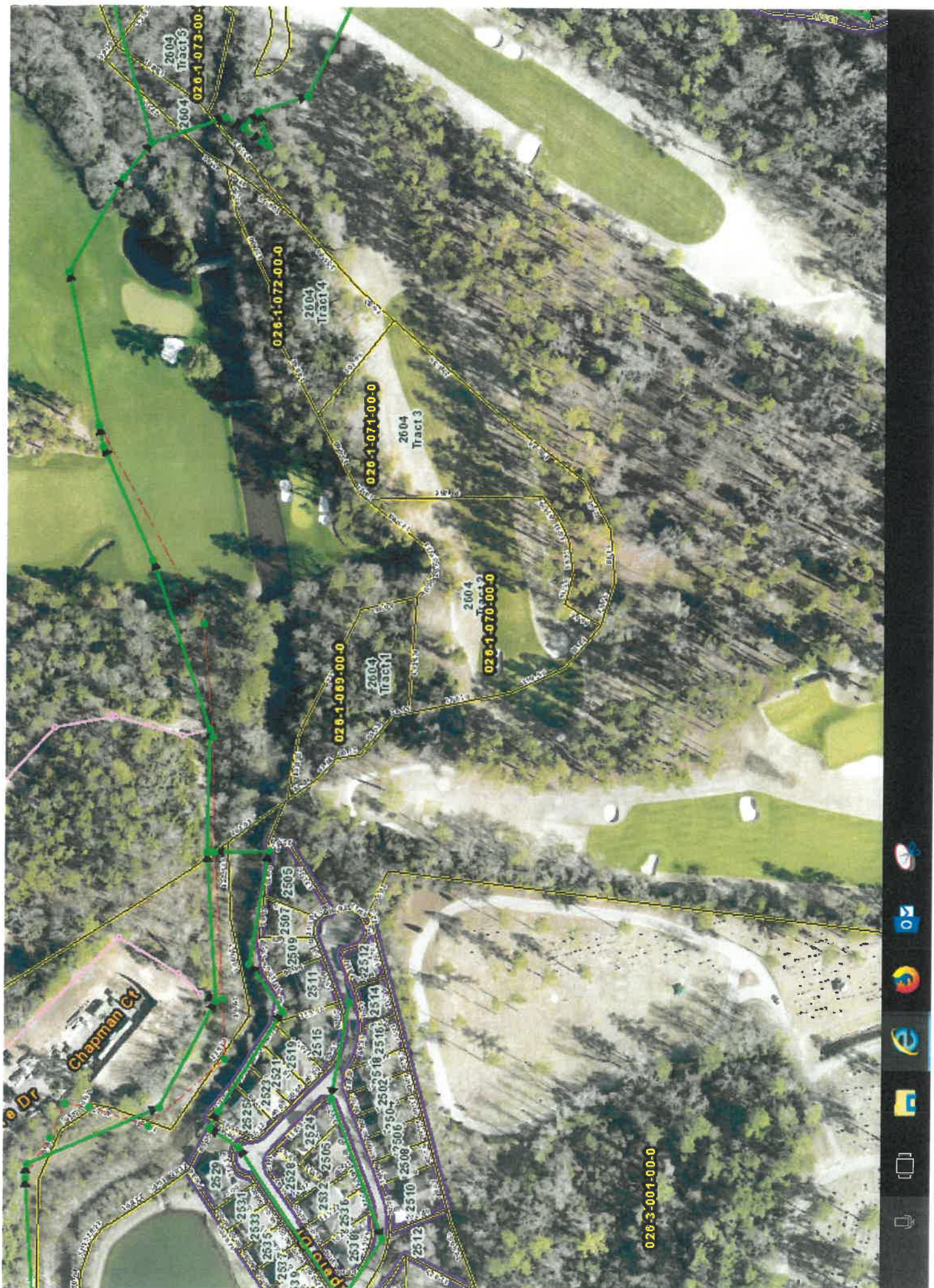
MAP 2

Enter At Doug
Banard to ACCESS
Back Toward Dixie Airline

Augusta, GA







2604 Tract 3
026-1-073-00-0

026-1-072-00-0
2604 Tract 4

026-1-071-00-0
2604 Tract 3

2604 Tract 2
026-1-070-00-0

026-1-069-00-0
2604 Tract 1

026-3-001-00-0

Chapman Ct

2506
2507
2508
2511
2512
2514
2515
2516
2518
2519
2520
2521
2522
2523
2524
2525
2526
2527
2528
2529
2530
2531
2532
2533
2534
2535
2536
2537
2538
2539
2540
2541
2542
2543
2544
2545
2546
2547
2548
2549
2550
2551
2552
2553
2554
2555
2556
2557
2558
2559
2560
2561
2562
2563
2564
2565
2566
2567
2568
2569
2570
2571
2572
2573
2574
2575
2576
2577
2578
2579
2580
2581
2582
2583
2584
2585
2586
2587
2588
2589
2590
2591
2592
2593
2594
2595
2596
2597
2598
2599
2600
2601
2602
2603
2604
2605
2606
2607
2608
2609
2610
2611
2612
2613
2614
2615
2616
2617
2618
2619
2620
2621
2622
2623
2624
2625
2626
2627
2628
2629
2630
2631
2632
2633
2634
2635
2636
2637
2638
2639
2640
2641
2642
2643
2644
2645
2646
2647
2648
2649
2650
2651
2652
2653
2654
2655
2656
2657
2658
2659
2660
2661
2662
2663
2664
2665
2666
2667
2668
2669
2670
2671
2672
2673
2674
2675
2676
2677
2678
2679
2680
2681
2682
2683
2684
2685
2686
2687
2688
2689
2690
2691
2692
2693
2694
2695
2696
2697
2698
2699
2700



