

CUSTOMER SUPPORT GUIDES:

Large Mirror Replacement

Estimated time: 10–15 minutes

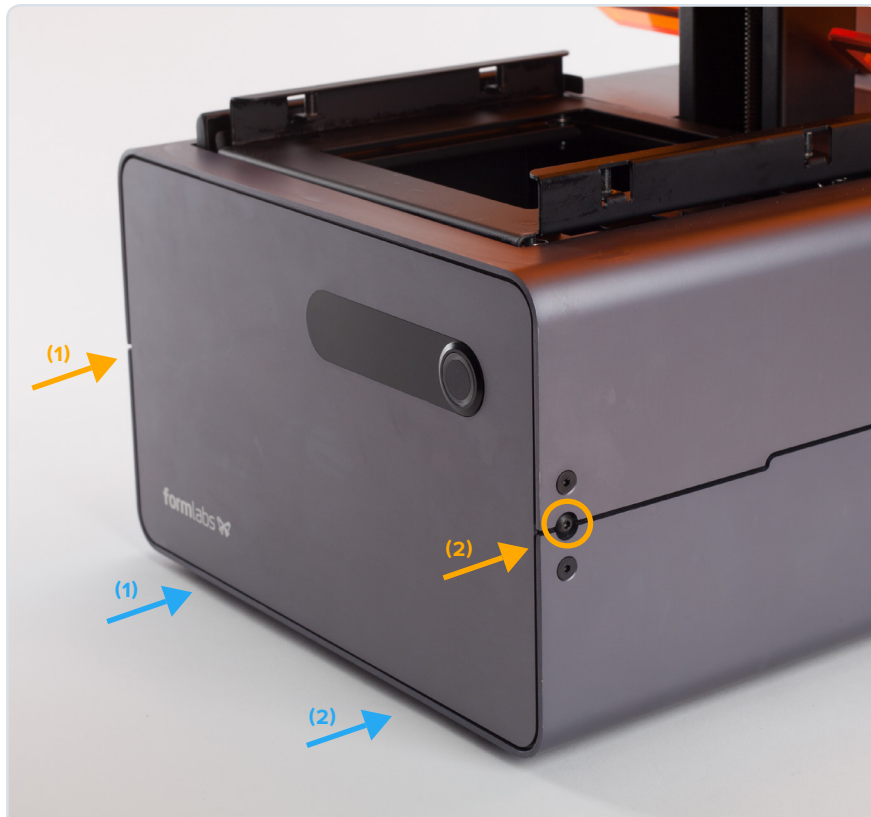
Tools Needed:

Replacement Form 1+ large mirror
2.5 mm hex wrench
5.5 mm (M3) socket wrench
Flexible socket wrench extension
Nitrile gloves
Tweezers (optional; may help)

IMPORTANT!

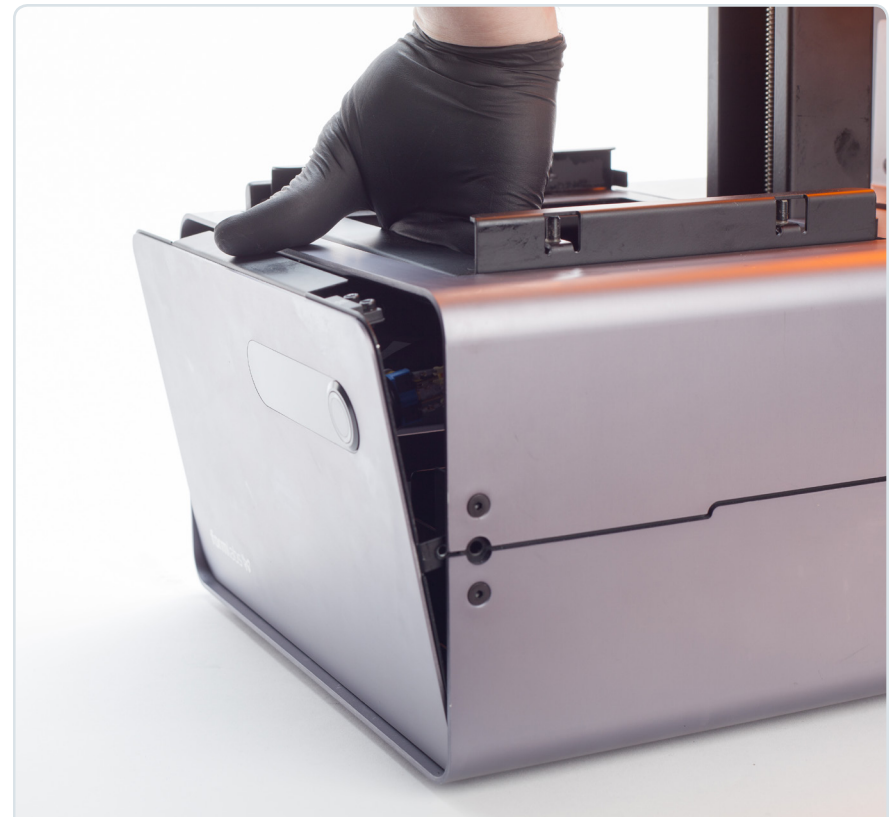
A thin blue film protects the mirror's delicate reflective surface. This film should be carefully removed only after the mirror is installed, prior to the operation of the printer.

Nitrile gloves should always be worn when handling the Form 1+ mirrors.



STEP 1: REMOVE THE FRONT SCREWS

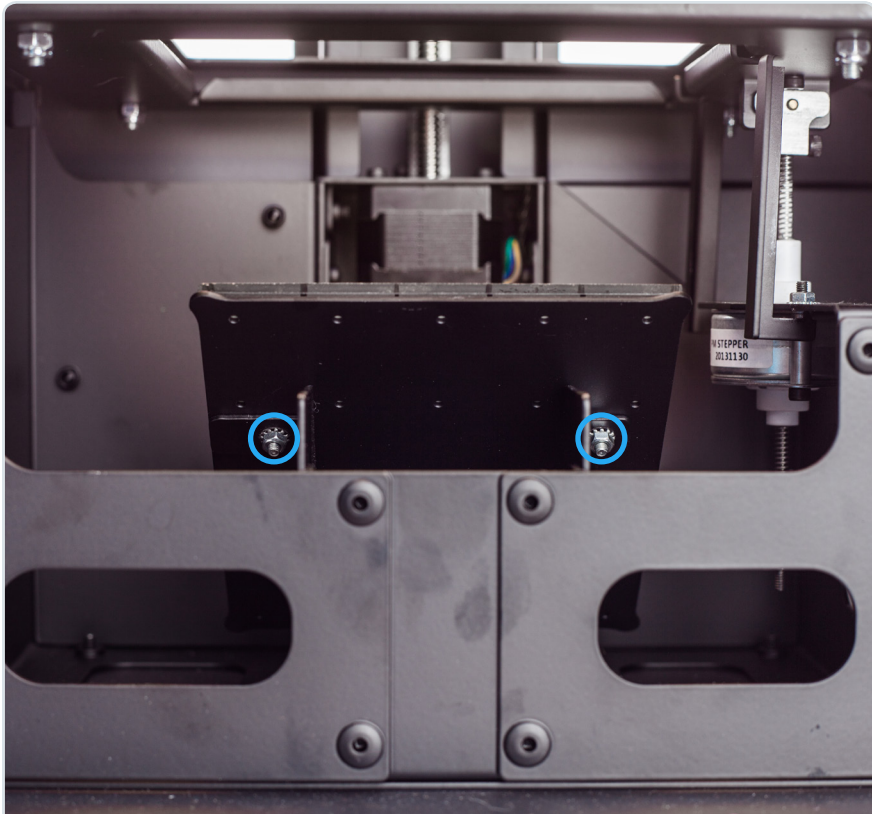
- Remove the two (2) countersunk screws on the front bottom edge. It may be easiest to slide the front of the Form 1+ over the edge of a table to access these bottom screws.
- Remove the two (2) button-head screws, one on each side of the printer.



STEP 2: REMOVE THE FRONT PANEL

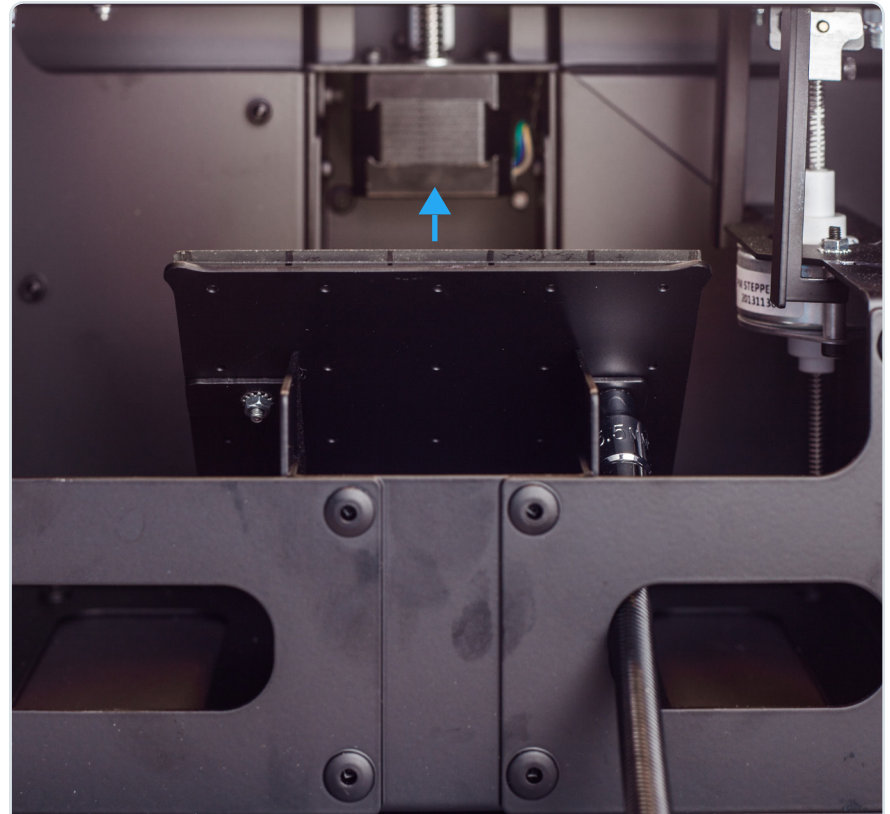
To remove the front panel, lift the cover, reach inside the Form 1+ and gently push the front panel out from the inside.

Once the front panel is removed, set it aside without removing any of the cables.



STEP 3: LOCATE TWO M3 NUTS

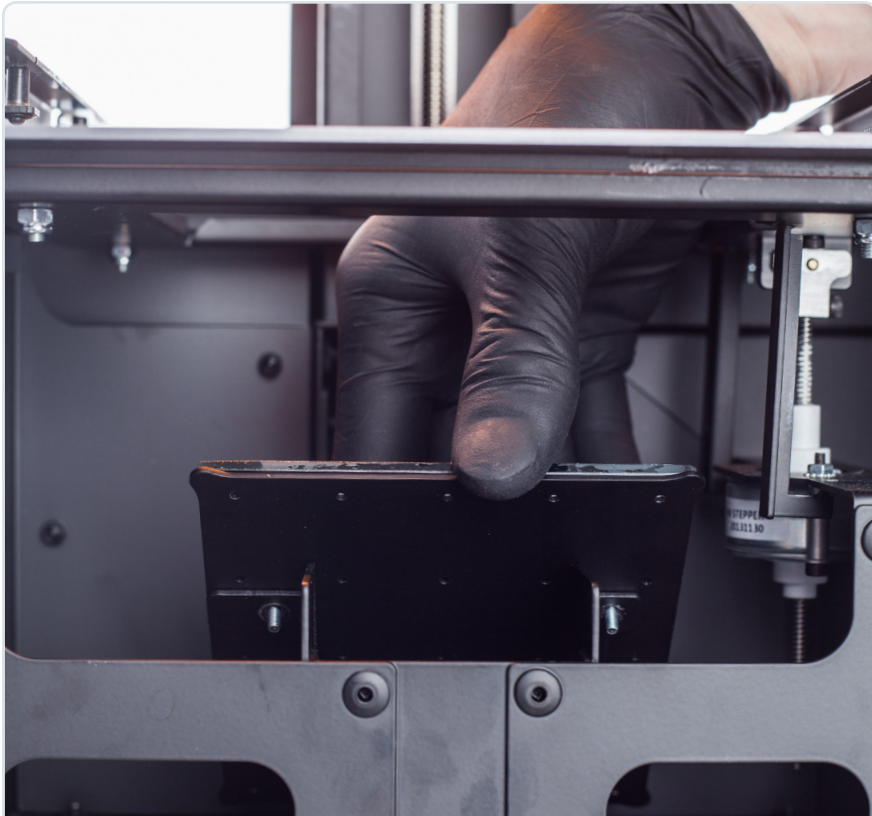
Locate two M3 (5.5 mm) nuts securing the large mirror to the main steel frame.



STEP 4: REMOVE MIRROR

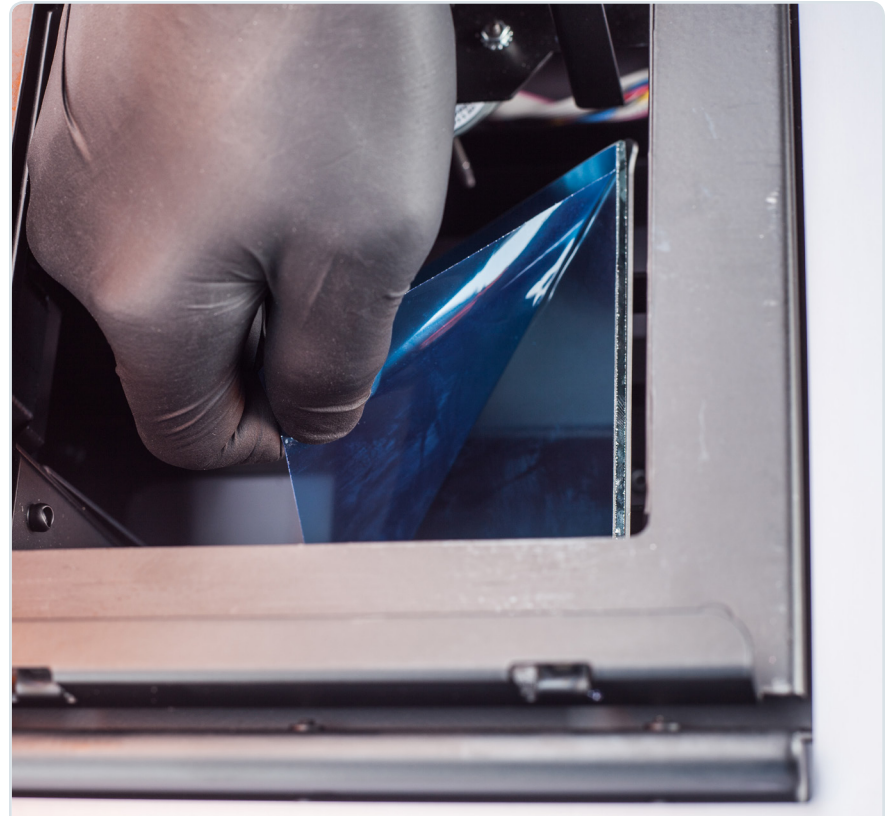
Remove both 5.5 mm nuts using a socket wrench (as shown). Once nuts are removed, the mirror can be removed.

Remove mirror by tilting it toward the back of the printer and carefully lifting it out of the Form 1+.



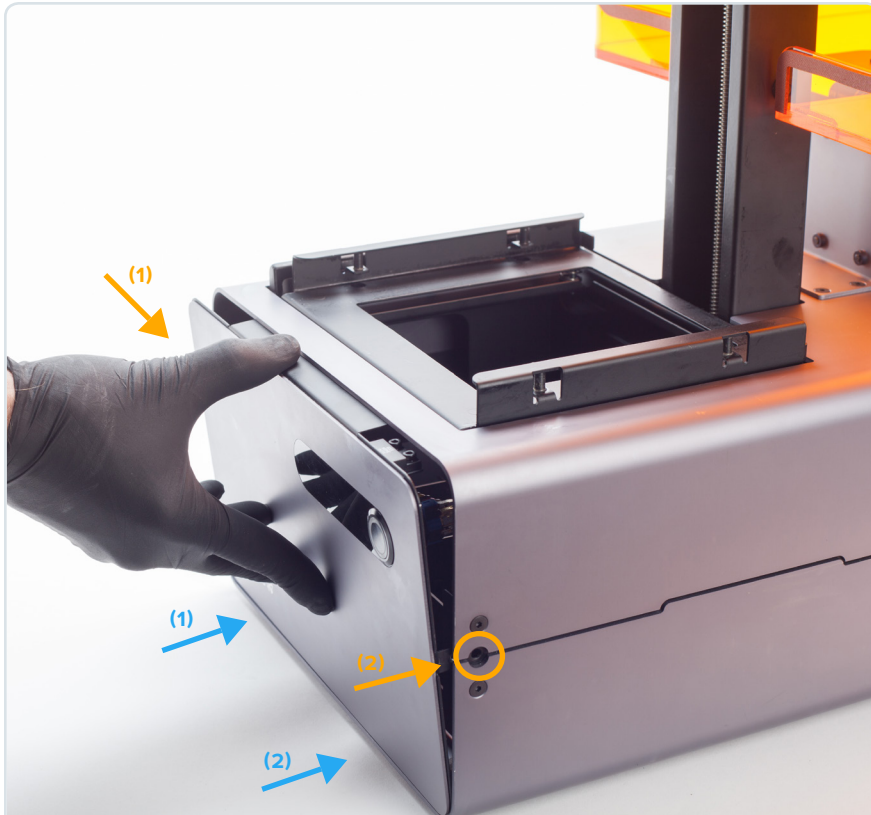
STEP 5: REPLACING THE MIRROR

Replace the new mirror by laying it into the frame mount and securing it with two 5.5 mm nuts. Ensure the mirror is fully seated flush in the frame mount and is not loose at all.



STEP 6: REMOVE THE PROTECTIVE FILM

Carefully remove the blue film protecting the mirror's surface by pulling up from one corner. Gently use tweezers to help remove the film, if necessary.



STEP 7: INSTALL THE FRONT PANEL

To fasten the front panel in place, ensure that all cables are attached, then align the bottom edge of the front panel with the front of the printer. Insert the front panel, and secure the two (2) black button-head screws on either side, as well as the two (2) countersunk screws on the bottom of the front panel. It may be easiest to slide the front of the Form 1+ over the edge of a table to access these bottom screws.