

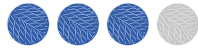


ZIG ZAG
SET

PAINTBOX

YARNS

ZIG ZAG BABY BLANKET



intermediate
Baby-DK-Set-002

SIZES

Actual measurement Completed Blanket is 52 cm, 20½ in, wide and 83 cm, 32½ in, long

YOU WILL NEED

- 50g balls of Paintbox Yarns Baby DK (As seen on cover) · 4 × Baby Blue
- Pair of 3¾mm (UK 9 – US 5) knitting needles
- Pair of 4mm (UK 8 – US 6) knitting needles
- Cable needle

TENSION (GAUGE)

25½ stitches and 30 rows to 10 cm, 4 in, measured over pattern using 4mm (UK 8 – US 6) needles, or size required to give correct tension.

It is vitally important to check your tension (gauge) before starting as working to the wrong tension (gauge) will mean your item will not be the size shown and could result in yarn being left over, or more yarn being required. Before beginning, knit a tension (gauge) swatch at least 13 cm, 5 in, square and measure your tension (gauge). If there are more sts and rows than stated, try again using thicker needles. If there are fewer sts and rows than stated, try again using thinner needles.

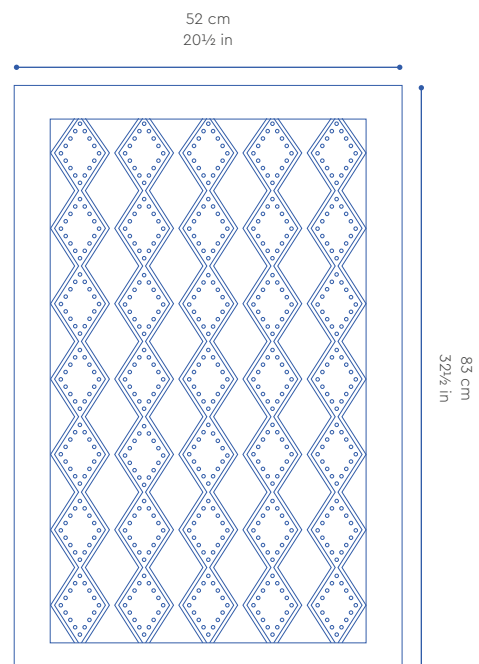
GOOD TO KNOW

- Paintbox Yarns cannot accept responsibility for the finished item if any yarn other than the recommended yarn is used.
- Yarn quantities are based on average requirements and are therefore approximate.
- Colour reproduction is as close as printing processes will allow.
- Instructions are written using UK terminology with changes for US terminology given in italics in round brackets () afterwards.
- Repeat figures in round brackets () the number of times stated afterwards.

ABBREVIATIONS

cm = centimetres; **Cr3L** = slip next 2 sts onto cable needle and leave at front of work, P1, then K2 from cable needle; **Cr3R** = slip next st onto cable needle and leave at back of work, K2, then P1 from cable needle; **in** = inches; **inc** = increas(e)(ing); **K** = knit; **P** = purl; **patt** = pattern; **psso** = pass slipped stitch over; **rep** = repeat; **rs** = right side; **sl 1** = slip one stitch; **st(s)** = stitch(es); **tog** = together; **ws** = wrong side; **yfwd** = yarn forward.

Visit www.paintboxyarns.com for more patterns or to buy yarn online



BLANKET

Cast on 125 sts using 3¾mm (UK 9 – US 5) needles.

row 1 (rs) K1, *P1, K1, rep from * to end.

row 2 as row 1.

These 2 rows form moss st.

Work in moss st for a further 11 rows, ending with a rs row.

row 14 (ws) moss st 9 sts, (moss st 10 sts, inc in next st, moss st 1 st, inc in next st, moss st 8 sts) 5 times, moss st 11 sts. 135 sts.

Change to 4mm (UK 8 – US 6) needles.

Now work in patt as follows:

row 1 (rs) moss st 9 sts, (P9, Cr3R, P1, Cr3L, P7) 5 times, P2, moss st 9 sts.

row 2 moss st 9 sts, (K9, P2, K3, P2, K7) 5 times, K2, moss st 9 sts.

row 3 moss st 9 sts, (P8, Cr3R, P3, Cr3L, P6) 5 times, P2, moss st 9 sts.

row 4 moss st 9 sts, (K8, P2, K5, P2, K6) 5 times, K2, moss st 9 sts.

row 5 moss st 9 sts, (P7, Cr3R, P5, Cr3L, P5) 5 times, P2, moss st 9 sts.

row 6 moss st 9 sts, (K7, P2, K2, K2tog, yfwd, K3, P2, K5) 5 times, K2, moss st 9 sts.

row 7 moss st 9 sts, (P6, Cr3R, P7, Cr3L, P4) 5 times, P2, moss st 9 sts.

row 8 moss st 9 sts, (K6, P2, K2, K2tog, yfwd, K1, yfwd, sl 1, K1, pssso, K2, P2, K4) 5 times, K2, moss st 9 sts.

row 9 moss st 9 sts, (P5, Cr3R, P9, Cr3L, P3) 5 times, P2, moss st 9 sts.

row 10 moss st 9 sts, (K5, P2, K2, K2tog, yfwd, K3, yfwd, sl 1, K1, pssso, K2, P2, K3) 5 times, K2, moss st 9 sts.

row 11 moss st 9 sts, (P4, Cr3R, P11, Cr3L, P2) 5 times, P2, moss st 9 sts.

row 12 moss st 9 sts, (K4, P2, K2, K2tog, yfwd, K5, yfwd, sl 1, K1, pssso, K2, P2, K2) 5 times, K2, moss st 9 sts.

row 13 moss st 9 sts, (P3, Cr3R, P13, Cr3L, P1) 5 times, P2, moss st 9 sts.

row 14 moss st 9 sts, (K3, P2, K2, K2tog, yfwd, K7, yfwd, sl 1, K1, pssso, K2, P2, K1) 5 times, K2, moss st 9 sts.

row 15 moss st 9 sts, (P2, Cr3R, P15, Cr3L) 5 times, P2, moss st 9 sts.

row 16 moss st 9 sts, (K2, P2, K5, yfwd, sl 1, K1, pssso, K3, K2tog, yfwd, K5, P2) 5 times, K2, moss st 9 sts.

row 17 moss st 9 sts, (P2, Cr3L, P15, Cr3R) 5 times, P2, moss st 9 sts.

row 18 moss st 9 sts, (K3, P2, K5, yfwd, sl 1, K1, pssso, K1, K2tog, yfwd, K5, P2, K1) 5 times, K2, moss st 9 sts.

row 19 moss st 9 sts, (P3, Cr3L, P13, Cr3R, P1) 5 times, P2, moss st 9 sts.

row 20 moss st 9 sts, (K4, P2, K5, yfwd, sl 1, K2tog, pssso, yfwd, K5, P2, K2) 5 times, K2, moss st 9 sts.

row 21 moss st 9 sts, (P4, Cr3L, P11, Cr3R, P2) 5 times, P2, moss st 9 sts.

row 22 moss st 9 sts, (K5, P2, K5, yfwd, sl 1, K1, pssso, K4, P2, K3) 5 times, K2, moss st 9 sts.

row 23 moss st 9 sts, (P5, Cr3L, P9, Cr3R, P3) 5 times, P2, moss st 9 sts.

row 24 moss st 9 sts, (K6, P2, K9, P2, K4) 5 times, K2, moss st 9 sts.

row 25 moss st 9 sts, (P6, Cr3L, P7, Cr3R, P4) 5 times, P2, moss st 9 sts.

row 26 moss st 9 sts, (K7, P2, K7, P2, K5) 5 times, K2, moss st 9 sts.

row 27 moss st 9 sts, (P7, Cr3L, P5, Cr3R, P5) 5 times, P2, moss st 9 sts.

row 28 as row 4.

row 29 moss st 9 sts, (P8, Cr3L, P3, Cr3R, P6) 5 times, P2, moss st 9 sts.

row 30 as row 2.

row 31 moss st 9 sts, (P9, Cr3L, P1, Cr3R, P7) 5 times, P2, moss st 9 sts.

row 32 moss st 9 sts, (K10, P2, K1, P2, K8) 5 times, K2, moss st 9 sts.

These 32 rows form patt.

Rep these 32 rows 5 times more, and then rows 1 to 31 again, ending with a rs row.

next row (ws) moss st 9 sts, (K10, P2tog, K1, P2tog, K8) 5 times, K2, moss st 9 sts. 125 sts.

Change to 3¾mm (UK 9 – US 5) needles.

Now work all sts in moss st as given for cast-on edge for 14 rows, ending with a ws row.

Cast (*bind*) off in moss st.

MAKING UP

Do NOT steam press!

Pin out Blanket to measurement given, cover with a clean damp cloth and leave to dry naturally.

ZIG ZAG HAT



easy/intermediate
Baby-DK-Set-001

SIZES

To fit age 0-3 3-6 6-12 12-18 months

Width around	33	36	39	41	cm
head	13	14	15½	16	in

YOU WILL NEED

- 50g balls of Paintbox Yarns Baby DK (As seen on cover)
· 1 [1: 1] × Baby Blue
- Pair of 3¾mm (UK 9 – US 5) knitting needles
- Pair of 4mm (UK 8 – US 6) knitting needles
- Cable needle

TENSION (GAUGE)

22 stitches and 30 rows to 10 cm, 4 in, measured over stocking (*stockinette*) stitch using 4mm (UK 8 – US 6) needles, or size required to give correct tension.

It is vitally important to check your tension (*gauge*) before starting as working to the wrong tension (*gauge*) will mean your item will not be the size shown and could result in yarn being left over, or more yarn being required. Before beginning, knit a tension (*gauge*) swatch at least 13 cm, 5 in, square and measure your tension (*gauge*). If there are more sts and rows than stated, try again using thicker needles. If there are fewer sts and rows than stated, try again using thinner needles.

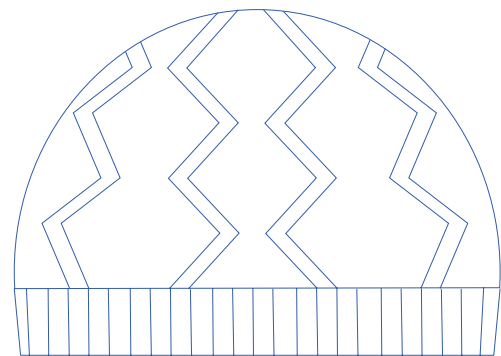
GOOD TO KNOW

- Paintbox Yarns cannot accept responsibility for the finished item if any yarn other than the recommended yarn is used.
- Yarn quantities are based on average requirements and are therefore approximate.
- Colour reproduction is as close as printing processes will allow.
- Instructions are written using UK terminology with changes for US terminology given in italics in round brackets () afterwards.
- Repeat figures in round brackets () the number of times stated afterwards.

ABBREVIATIONS

cm = centimetres; **Cr3L** = slip next 2 sts onto cable needle and leave at front of work, P1, then K2 from cable needle; **Cr3R** = slip next st onto cable needle and leave at back of work, K2, then P1 from cable needle; **in** = inches; **K** = knit; **P** = purl; **patt** = pattern; **rem** = remain(s)(ing); **rep** = repeat; **rev st st (rev stockinette st)** = reverse stocking stitch (*reverse stockinette stitch*) (P on rs rows, K on ws rows); **rs** = right side; **st(s)** = stitch(es); **tog** = together; **ws** = wrong side.

Visit www.paintboxyarns.com for more patterns or to buy yarn online



16½ : 18 : 19½ : 20½ cm
6½ : 7 : 7¾ : 8 in

HAT

Cast on 85 [91: 97: 103] sts using 3¾mm (UK 9 – US 5) needles.

row 1 (rs) *P1 [2: 3: 1], (K2, P1) 0 [0: 0: 1] times, K2, P2, K2, P1, K2, P2, K2, rep from * to last st, P1.

row 2 K1, *P2, K2, P2, K1, P2, K2, P2, K1 [2: 3: 1], (P2, K1) 0 [0: 0: 1] times, rep from * to end.

These 2 rows form rib.

Work in rib for 4 [6: 8: 10] rows more, ending with a ws row.

Change to 4mm (UK 8 – US 6) needles.

Now work in patt as follows:

row 1 (rs) (P4 [5: 6: 7], Cr3R, P1, Cr3L, P3) 6 times, P1.

row 2 K1, (K3, P2, K3, P2, K4 [5: 6: 7]) 6 times.

row 3 (P3 [4: 5: 6], Cr3R, P3, Cr3L, P2) 6 times, P1.

row 4 K1, (K2, P2, K5, P2, K3 [4: 5: 6]) 6 times.

row 5 (P2 [3: 4: 5], Cr3R, P5, Cr3L, P1) 6 times, P1.

row 6 K1, (K1, P2, K7, P2, K2 [3: 4: 5]) 6 times.

row 7 (P1 [2: 3: 4], Cr3R, P7, Cr3L) 6 times, P1.

row 8 K1, (P2, K9, P2, K1 [2: 3: 4]) 6 times.

row 9 (P1 [2: 3: 4], Cr3L, P7, Cr3R) 6 times, P1.

row 10 as row 6.

row 11 (P2 [3: 4: 5], Cr3L, P5, Cr3R, P1) 6 times, P1.

row 12 as row 4.

row 13 (P3 [4: 5: 6], Cr3L, P3, Cr3R, P2) 6 times, P1.

row 14 as row 2.

row 15 (P4 [5: 6: 7], Cr3L, P1, Cr3R, P3) 6 times, P1.

row 16 K1, (K4, P2, K1, P2, K5 [6: 7: 8]) 6 times.

These 16 rows form patt.

Work in patt for a further 16 rows, ending with a ws row.

Shape top

row 1 (rs) *(P2tog) 0 [0: 0: 1] times, P4 [5: 6: 5], Cr3R, P1, Cr3L, P3, rep from * to last st, P1. 85 [91: 97: 97] sts.

row 2 K1, (K3, P2, K3, P2, K4 [5: 6: 6]) 6 times.

row 3 *(P2tog) 0 [0: 1: 1] times, P3 [4: 3: 3], Cr3R, P1, P2tog, Cr3L, P2, rep from * to last st, P1. 79 [85: 85: 85] sts.

row 4 K1, (K2, P2, K4, P2, K3 [4: 4: 4]) 6 times.

row 5 *(P2tog) 0 [1: 1: 1] times, P2 [1: 1: 1], Cr3R, (P2tog) twice, Cr3L, P1, rep from * to last st, P1. 67 sts.

row 6 K1, (K1, P2, K4, P2, K2) 6 times.

row 7 *P1, Cr3R, (P2tog) twice, Cr3L, rep from * to last st, P1. 55 sts.

row 8 K1, (P2, K4, P2, K1) 6 times.

row 9 (P1, Cr3L, P2tog, Cr3R) 6 times, P1. 49 sts.

row 10 K1, (K1, P2tog, K1, P2tog, K2tog) 6 times. 31 sts.

row 11 (K2tog) 15 times, P1.

Break yarn and thread through rem 16 sts. Pull up tight and fasten off securely.

MAKING UP

Do NOT steam press!

Join back seam.

Pin out Hat to measurements given, cover with a clean damp cloth and leave to dry naturally.

ZIG ZAG BOOTEES



easy
Baby-DK-Set-001

SIZES

To fit age 0-3 3-6 6-12 12-18 months

Length of foot 8½ 9 9½ 10 cm
3¼ 3½ 3¾ 4 in

YOU WILL NEED

- 50g balls of Paintbox Yarns Baby DK (As seen on cover) · 1 [1: 1] × Baby Blue
- Pair of 3¼mm (UK 10 – US 3) knitting needles
- Pair of 4mm (UK 8 – US 6) knitting needles

TENSION (GAUGE)

22 stitches and 30 rows to 10 cm, 4 in, measured over stocking (*stockinette*) stitch using 4mm (UK 8 – US 6) needles, or size required to give correct tension.

It is vitally important to check your tension (*gauge*) before starting as working to the wrong tension (*gauge*) will mean your item will not be the size shown and could result in yarn being left over, or more yarn being required. Before beginning, knit a tension (*gauge*) swatch at least 13 cm, 5 in, square and measure your tension (*gauge*). If there are more sts and rows than stated, try again using thicker needles. If there are fewer sts and rows than stated, try again using thinner needles.

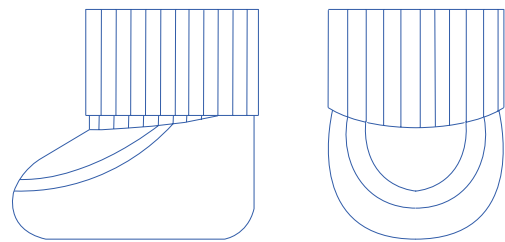
GOOD TO KNOW

- Paintbox Yarns cannot accept responsibility for the finished item if any yarn other than the recommended yarn is used.
- Yarn quantities are based on average requirements and are therefore approximate.
- Colour reproduction is as close as printing processes will allow.
- Instructions are written using UK terminology with changes for US terminology given in italics in round brackets () afterwards.
- Repeat figures in round brackets () the number of times stated afterwards.

ABBREVIATIONS

beg = beginning; **cm** = centimetres; **dec** = decreas(e)(ing); **in** = inches; **K** = knit; **P** = purl; **rep** = repeat; **rev st st (rev stockinette st)** = reverse stocking stitch (*reverse stockinette stitch*) (P on rs rows, K on ws rows); **rs** = right side; **st st (stockinette st)** = stocking stitch (*stockinette stitch*) (K on rs rows, P on ws rows); **st(s)** = stitch(es); **tbl** = through back of loops; **tog** = together; **ws** = wrong side.

Visit www.paintboxyarns.com for more patterns or to buy yarn online



8½ [9 : 9½ : 10] cm
3¼ [3½ : 3¾ : 4] in

BOOTEES (BOTH ALIKE)

Cast on 26 [30: 30: 34] sts using 3¼mm (UK 10 – US 3) needles.

row 1 (rs) K2, *P2, K2, rep from * to end.

row 2 P2, *K2, P2, rep from * to end.

These 2 rows form rib.

Work in rib for 16 [18: 18: 20] rows more, dec 1 [3: 1: 3] sts evenly across last row and ending with a ws row. 25 [27: 29: 31] sts.

Change to 4mm (UK 8 – US 6) needles.

Beg with a P row, work in rev st st (*rev stockinette st*) as follows:

Work 4 rows, ending with a ws row.

Shape instep

next row (rs) P17 [18: 20: 21] and turn.

next row K9 [9: 11: 11] and turn.

Work 10 [12: 14: 16] rows more on these 9 [9: 11: 11] sts only for instep.

Break yarn.

With rs facing, rejoin yarn at base of instep and pick up and knit 8 [9: 10: 11] sts up first side of instep, K across 9 [9: 11: 11] instep sts, pick up and knit 8 [9: 10: 11] sts down other side of instep and turn.

next row (ws) P25 [27: 31: 33] and turn.

next row K25 [27: 31: 33] and turn.

Rep last 2 rows once more, and then first of these 2 rows again, ending with a ws row.

These last 5 rows form the st st (*stockinette st*) section for "pleat" around top of instep.

next row (rs) K tog first st with corresponding st of first "pleat" row, (K tog next st with corresponding st of first "pleat" row)

24 [26: 30: 32] times – "pleat" completed, then P to end of row.

41 [45: 49: 53] sts.

Beg with a K row, work in rev st st (*rev stockinette st*) across all sts for 5 [7: 7: 9] rows, ending with a ws row.

Shape sole

row 1 (rs) P2, P2tog, P2tog tbl, P8 [10: 12: 14], P2tog, P2tog tbl, P5, P2tog, P2tog tbl, P8 [10: 12: 14], P2tog, P2tog tbl, P2.

33 [37: 41: 45] sts.

row 2 knit.

row 3 P1, P2tog, P2tog tbl, P6 [8: 10: 12], P2tog, P2tog tbl, P3, P2tog, P2tog tbl, P6 [8: 10: 12], P2tog, P2tog tbl, P1. 25 [29: 33: 37] sts.

row 4 knit.

row 5 P2tog, P2tog tbl, P4 [6: 8: 10], P2tog, P2tog tbl, P1, P2tog, P2tog tbl, P4 [6: 8: 10], P2tog, P2tog tbl. 17 [21: 25: 29] sts.

row 6 knit.

Cast (*bind*) off purlwise.

MAKING UP

Do NOT steam press!

Join sole and back seam, reversing seam for last 12 rows (for turn back). Fold rib cuff in half to outside.

Pin out Bootee to measurements given, cover with a clean damp cloth and leave to dry naturally.

ZIG ZAG CARDIGAN



easy/intermediate
Baby-DK-Set-001

SIZES

To fit age	0-3	3-6	6-12	12-18	months
To fit chest	41	46	51	56	cm
	16	18	20	22	in
Actual measurement	47	53	58	64	cm
	18½	20¾	22¾	25	in
Finished length	22	26	30	34	cm
	8½	10¼	11¾	13½	in
Sleeve seam	13	16	20	26	cm
	5	6¼	7¾	10¼	in

YOU WILL NEED

- 50g balls of Paintbox Yarns Baby DK (As seen on cover) · 2 [2: 3: 3] × Baby Blue
- Pair of 3¼mm (UK 10 – US 3) knitting needles
- Pair of 3¾mm (UK 9 – US 5) knitting needles
- Pair of 4mm (UK 8 – US 6) knitting needles
- Cable needle
- 4 × buttons approx 15mm, ½in

TENSION (GAUGE)

22 stitches and 30 rows to 10 cm, 4 in, measured over reverse stocking (*reverse stockinette*) stitch using 4mm (UK 8 – US 6) needles, or size required to give correct tension. Cable panel (13 sts) measures 5 cm, 2 in, wide.

It is vitally important to check your tension (*gauge*) before starting as working to the wrong tension (*gauge*) will mean your item will not be the size shown and could result in yarn being left over, or more yarn being required. Before beginning, knit a tension (*gauge*) swatch at least 13 cm, 5 in, square and measure your tension (*gauge*). If there are more sts and rows than stated, try again using thicker needles. If there are fewer sts and rows than stated, try again using thinner needles.

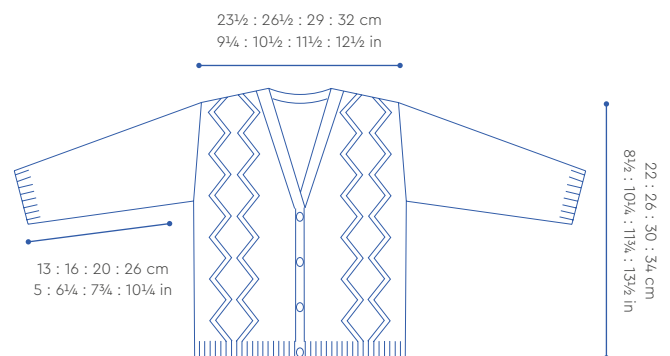
GOOD TO KNOW

- Paintbox Yarns cannot accept responsibility for the finished garment if any yarn other than the recommended yarn is used.
- Yarn quantities are based on average requirements and are therefore approximate.
- Colour reproduction is as close as printing processes will allow.
- Instructions are written using UK terminology with changes for US terminology given in italics in round brackets () afterwards.
- Repeat figures in round brackets () the number of times stated afterwards.
- Instructions are given for the smallest size, with changes for the larger sizes given in square brackets [] afterwards.
- Where only one figure is given, this relates to all sizes.
- Where the figure 0 appears, no stitches, times or rows are worked for this size.

ABBREVIATIONS

alt = alternate; **beg** = beginning; **cm** = centimetres; **cont** = continue; **Cr3L** = slip next 2 sts onto cable needle and leave at front of work, P1, then K2 from cable needle; **Cr3R** = slip next st onto cable needle and leave at back of work, K2, then P1 from cable needle; **dec** = decomp(e)(ing); **fol** = following; **in** = inches; **inc** = increas(e)(ing); **K** = knit; **P** = purl; **patt** = pattern; **rem** = remain(s)(ing); **rep** = repeat; **rev st st** (*rev stockinette st*) = reverse stocking stitch (*reverse stockinette stitch*) (P on rs rows, K on ws rows); **rs** = right side; **st(s)** = stitch(es); **tog** = together; **ws** = wrong side; **yrn** = yarn round needle.

Visit www.paintboxyarns.com for more patterns or to buy yarn online



BACK

Cast on 56 [62: 68: 74] sts using 3¾mm (UK 9 – US 5) needles.

row 1 (rs) P0 [0: 0: 1], K2 [1: 0: 2], (P2, K2) 2 [3: 3: 3] times, P1, K2, (P2, K2) 8 [8: 10: 10] times, P1, (K2, P2) 2 [3: 3: 3] times, K2 [1: 0: 2], P0 [0: 0: 1].

row 2 K0 [0: 0: 1], P2 [1: 0: 2], (K2, P2) 2 [3: 3: 3] times, K1, P2, (K2, P2) 8 [8: 10: 10] times, K1, (P2, K2) 2 [3: 3: 3] times, P2 [1: 0: 2], K0 [0: 0: 1].

These 2 rows form rib.

Work in rib for 8 rows more, ending with a ws row.

Change to 4mm (UK 8 – US 6) needles.

Now work in patt, placing cable panels as follows:

row 1 (rs) P4 [7: 6: 9], work next 13 sts as row 1 of cable panel, P22 [22: 30: 30], work next 13 sts as row 1 of cable panel, P4 [7: 6: 9].

row 2 K4 [7: 6: 9], work next 13 sts as row 2 of cable panel, K22 [22: 30: 30], work next 13 sts as row 2 of cable panel, K4 [7: 6: 9].

These 2 rows set the sts – 2 cable panels with rev st st (*rev stockinette st*) between panels and at sides.

Keeping sts correct throughout as now set and repeating the 16 row cable panel repeat throughout, cont as follows:

Cont straight until Back measures 22 [26: 30: 34] cm, 8½ [10¼: 11¾: 13½] in, ending with a ws row.

Shape shoulders

Keeping patt correct, cast (*bind*) off 6 [7: 7: 8] sts at beg of next 2 rows, 6 [7: 8: 8] sts at beg of foll 2 rows, and 7 [7: 8: 9] sts at beg of foll 2 rows.

Break yarn and leave rem 18 [20: 22: 24] sts on a holder.

LEFT FRONT

Cast on 26 [29: 32: 35] sts using 3¾mm (UK 9 – US 5) needles.

row 1 (rs) P0 [0: 0: 1], K2 [1: 0: 2], (P2, K2) 2 [3: 3: 3] times, P1, K2, (P2, K2) 3 [3: 4: 4] times, K1.

row 2 K1, P2, (K2, P2) 3 [3: 4: 4] times, K1, (P2, K2) 2 [3: 3: 3] times, P2 [1: 0: 2], K0 [0: 0: 1].

These 2 rows form rib.

Work in rib for 8 rows more, ending with a ws row.

Change to 4mm (UK 8 – US 6) needles.

Now work in patt, placing cable panel as follows:

row 1 (rs) P4 [7: 6: 9], work next 13 sts as row 1 of cable panel, P9 [9: 13: 13].

row 2 K9 [9: 13: 13], work next 13 sts as row 2 of cable panel, K4 [7: 6: 9].

These 2 rows set the sts – cable panel with rev st st (*rev stockinette st*) at sides.

Keeping sts correct throughout as now set and repeating the 16 row cable panel repeat throughout, cont as follows:

Cont straight until Left Front measures 12 [15: 18: 21] cm, 4¾ [6: 7: 8¾] in, ending with a ws row.

Shape front slope

Keeping patt correct, dec 1 st at end of next and foll 1 [1: 2: 2] alt rows, then on 5 [6: 6: 7] foll 4th rows. 19 [21: 23: 25] sts.

Cont straight until Left Front matches Back to start of shoulder shaping, ending with a ws row.

Shape shoulder

Keeping patt correct, cast (*bind*) off 6 [7: 7: 8] sts at beg of next row, and 6 [7: 8: 8] sts at beg of foll alt row.

Work 1 row.

Cast (*bind*) off rem 7 [7: 8: 9] sts.

RIGHT FRONT

Cast on 26 [29: 32: 35] sts using 3¾mm (UK 9 – US 5) needles.

row 1 (rs) K3, (P2, K2) 3 [3: 4: 4] times, P1, (K2, P2) 2 [3: 3: 3] times, K2 [1: 0: 2], P0 [0: 0: 1].

row 2 K0 [0: 0: 1], P2 [1: 0: 2], (K2, P2) 2 [3: 3: 3] times, K1, P2, (K2, P2) 3 [3: 4: 4] times, K1.

These 2 rows form rib.

Work in rib for 8 rows more, ending with a ws row.

Change to 4mm (UK 8 – US 6) needles.

Now work in patt, placing cable panel as follows:

row 1 (rs) P9 [9: 13: 13], work next 13 sts as row 1 of cable panel, P4 [7: 6: 9].

row 2 K4 [7: 6: 9], work next 13 sts as row 2 of cable panel, K9 [9: 13: 13].

These 2 rows set the sts – cable panel with rev st st (*rev stockinette st*) at sides.

Keeping sts correct throughout as now set and repeating the 16 row cable panel repeat throughout, cont as follows:

Cont straight until Right Front measures 12 [15: 18: 21] cm, 4¾ [6: 7: 8¾] in, ending with a ws row.

Shape front slope

Keeping patt correct, dec 1 st at beg of next and foll 1 [1: 2: 2] alt rows, then on 5 [6: 6: 7] foll 4th rows. 19 [21: 23: 25] sts.

Cont straight until Right Front matches Back to start of shoulder shaping, ending with a **rs** row.

Shape shoulder

Keeping patt correct, cast (*bind*) off 6 [7: 7: 8] sts at beg of next row, and 6 [7: 8: 8] sts at beg of foll alt row.

Work 1 row.

Cast (*bind*) off rem 7 [7: 8: 9] sts.

SLEEVES

Cast on 26 [30: 30: 34] sts using 3¾mm (UK 9 – US 5) needles.

row 1 (rs) K2, *P2, K2, rep from * to end.

row 2 P2, *K2, P2, rep from * to end.

These 2 rows form rib.

Work in rib for 8 rows more, inc [dec: inc: dec] 1 st at centre of last row and ending with a ws row. 27 [29: 31: 33] sts.

Change to 4mm (UK 8 – US 6) needles.

Beg with a P row, work in rev st st (*rev stockinette st*) throughout as follows:

Inc 1 st at each end of next [next: 3rd: 3rd] and every foll alt [4th: 4th: 4th] row until there are 33 [45: 45: 37] sts.

For 1st, 3rd and 4th sizes only

Inc 1 st at each end of every foll 4th [6th: 6th] row until there are 41 [49: 53] sts.

For all sizes

Cont straight until Sleeve measures 13 [16: 20: 26] cm, 5 [6¾: 7¾: 10¼] in, ending with a ws row.

Shape top

Cast (*bind*) off 4 [5: 6: 7] sts at beg of next 4 rows, ending with a ws row.

Cast (*bind*) off rem 25 sts.



FRONT BAND

Join both shoulder seams.

With rs facing and using 3¼mm (UK 10 – US 3) needles, beg and ending at front cast-on edges, pick up and knit 27 [35: 43: 51] sts up right front opening edge to beg of front slope shaping, and 30 [33: 36: 39] sts up right front slope to shoulder, K across 18 [20: 22: 24] sts on back holder, pick up and knit 30 [33: 36: 39] sts down left front slope to beg of front slope shaping, and 27 [35: 43: 51] sts down left front opening edge. 132 [156: 180: 204] sts.

row 1 (ws) K1, P2, *K2, P2, rep from * to last st, K1.

row 2 K3, *P2, K2, rep from * to last st, K1.

These 2 rows form rib.

Work in rib for 1 row more, ending with a ws row.

For a girl

row 4 (rs) rib 3, *yarn, work 2 tog (to make a buttonhole), rib 5 [8: 10: 13], rep from * twice more, yarn, work 2 tog (to make 4th buttonhole), rib to end.

For a boy

row 4 (rs) rib to last 26 [35: 41: 50] sts, *work 2 tog, yarn (to make a buttonhole), rib 5 [8: 10: 13], rep from * twice more, work 2 tog, yarn (to make 4th buttonhole), rib 3.

For a girl or a boy

Work in rib for a further 3 rows, ending with a ws row.

Cast (*bind*) off in rib.

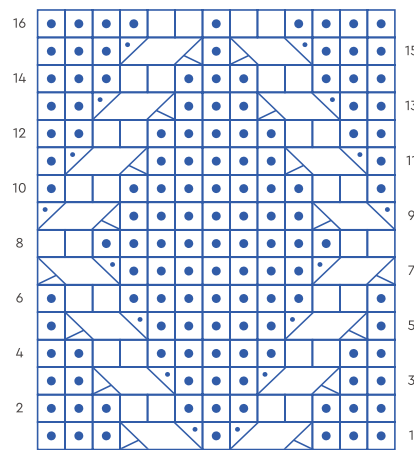
MAKING UP

Do NOT steam press!





Mark points along side seam edges 10 [11: 12: 13] cm, 4 [4¼: 4¾: 5] in, either side of shoulder seams, then sew shaped cast-off (*bind-off*) edge of sleeve to back and front between these points. Join side and sleeve seams. Sew on buttons to correspond with buttonholes.

Pin out Cardigan to measurements given, cover with a clean damp cloth and leave to dry naturally.

CABLE PANEL CHART



Key

-  K on rs rows,
P on ws rows
-  P on rs rows,
K on ws rows
-  Cr3L
-  Cr3R



ZIG ZAG SET

WE'VE USED

Champagne White



WE'VE USED

Mint Green



TOP TIP

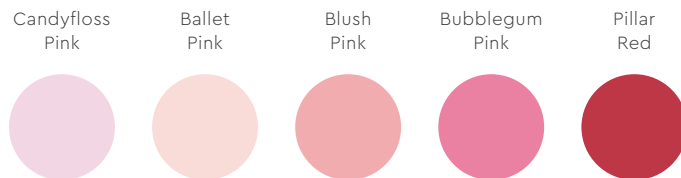
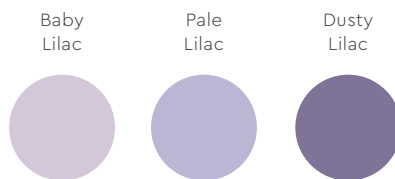
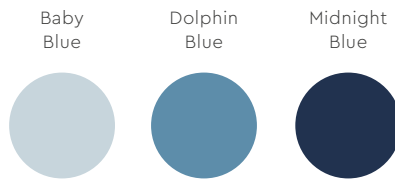
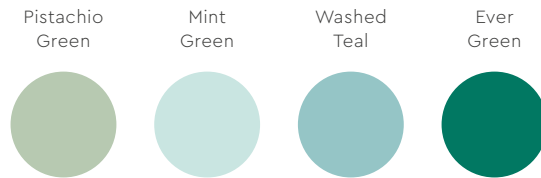
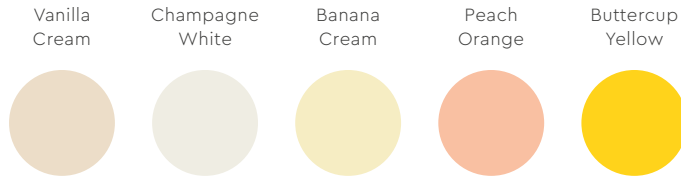
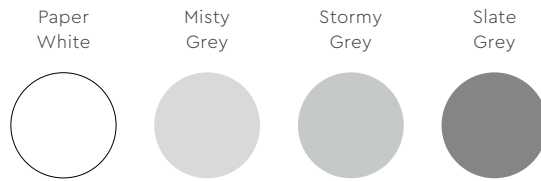
This simple set is perfect for when you don't know what you're expecting!

WE'VE USED

Baby Blue



pick your palette



PAINTBOX

YARNS