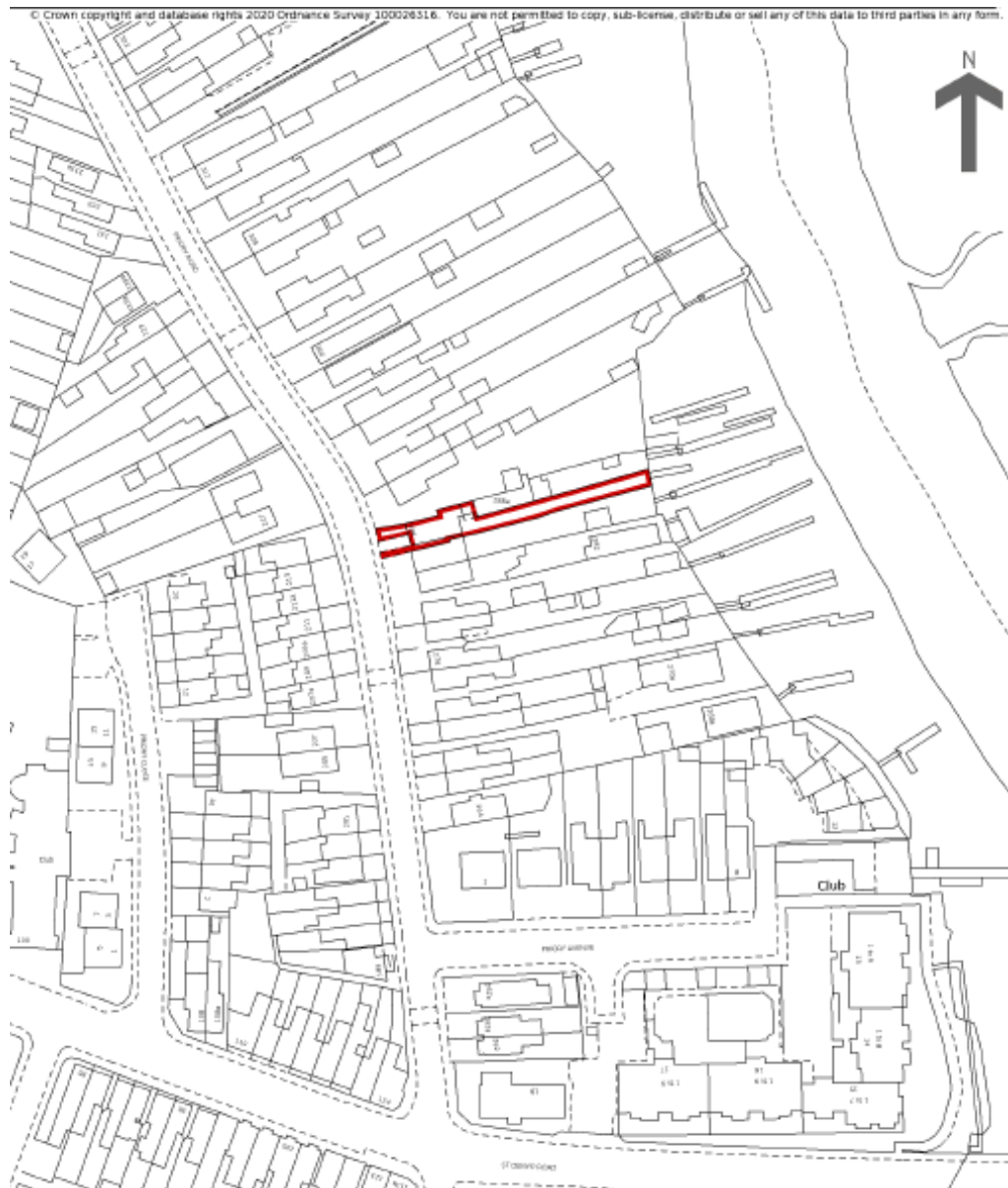
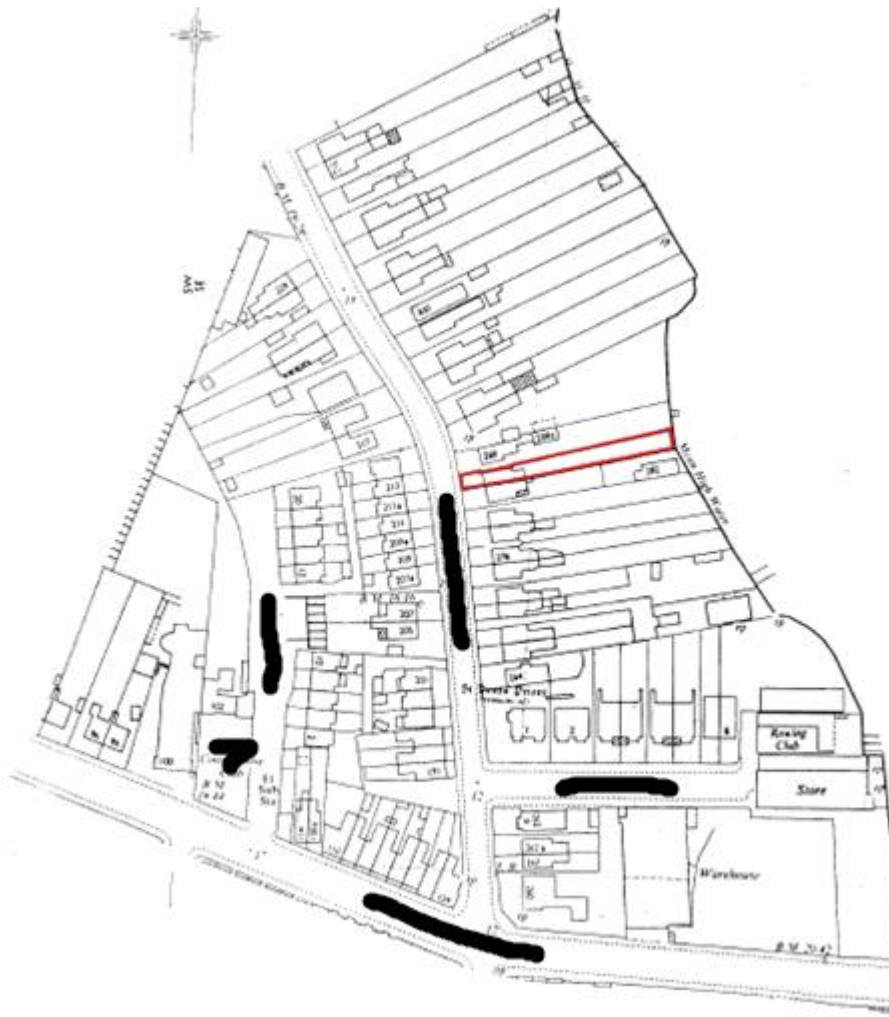


Example of historic research with old OS maps to determine a boundary line between neighbours.

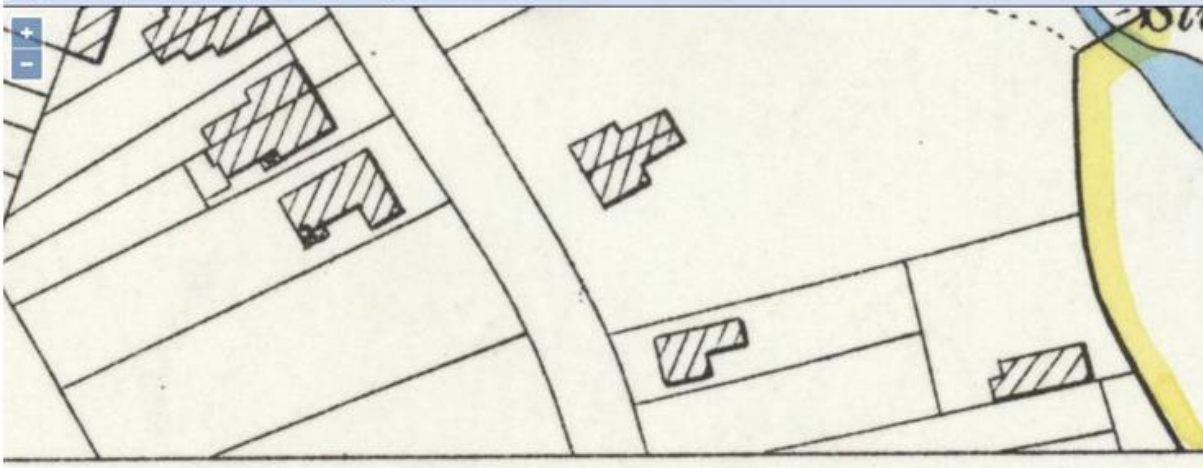
Using OS maps the features on the ground can be tracked over time to see where fences and hedges were at various time through the life of a property. A hedge in 1890 might have spread, been replaced by a fence and be back to hedge again by the time the current owners query the boundary location. In all the changes the actual position may well have changed.

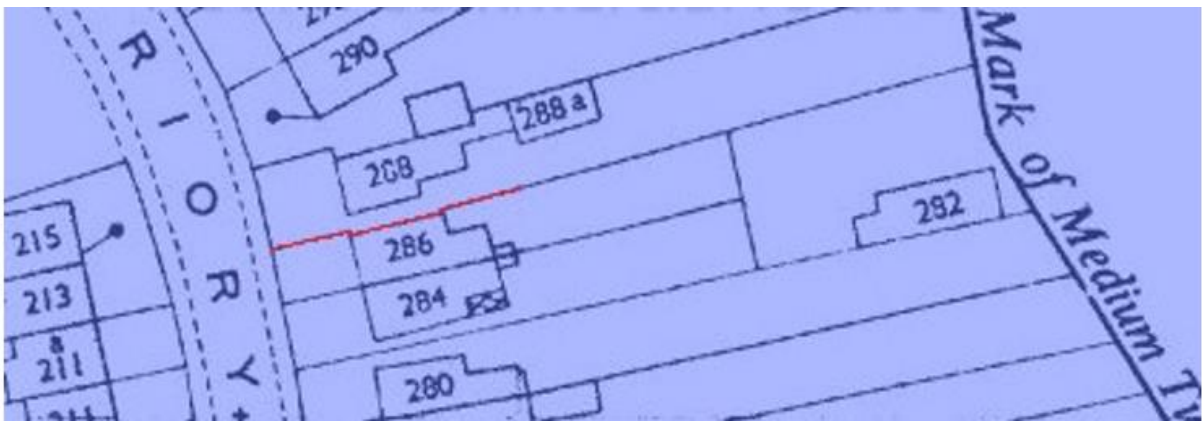
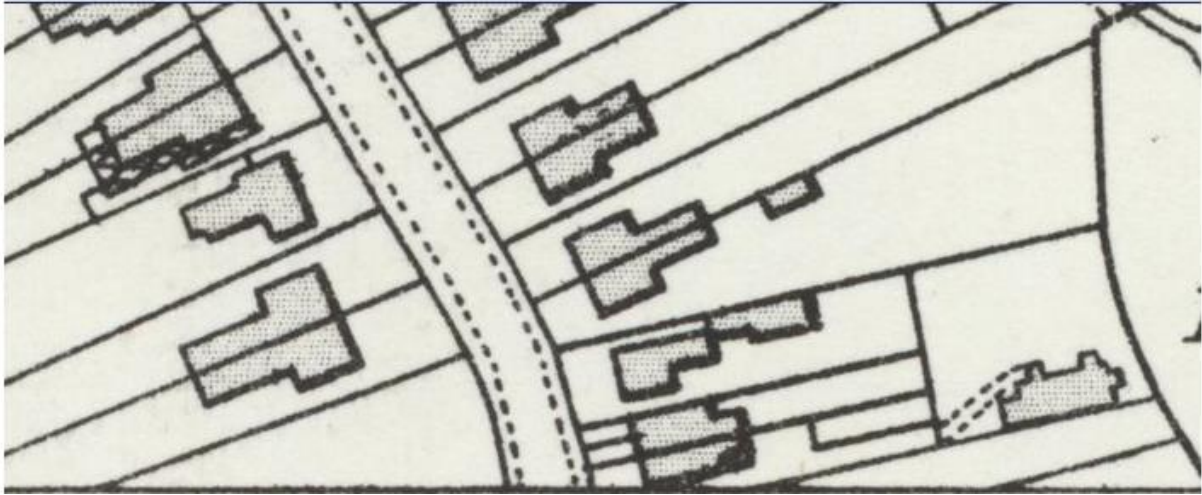
Using the OS information, title plans which are based on current OS maps at the time of property registration, and our own survey we can put a theory together and deliver a professional opinion to our clients.





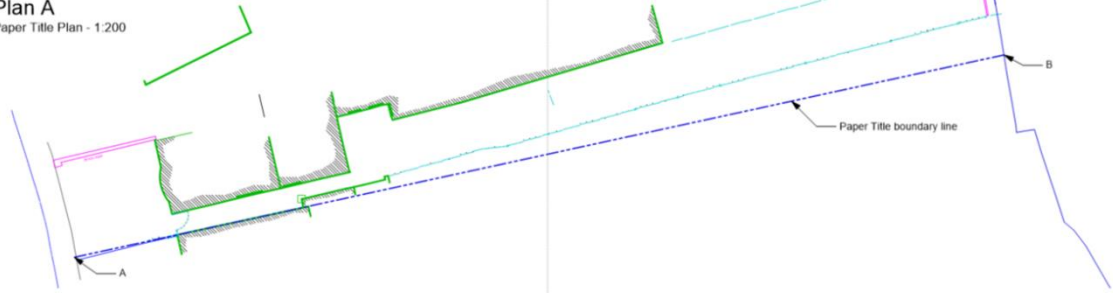
[Maps home](#) > [Ordnance Survey](#) > [OS 25 inch England and Wales, 1841-1952](#)



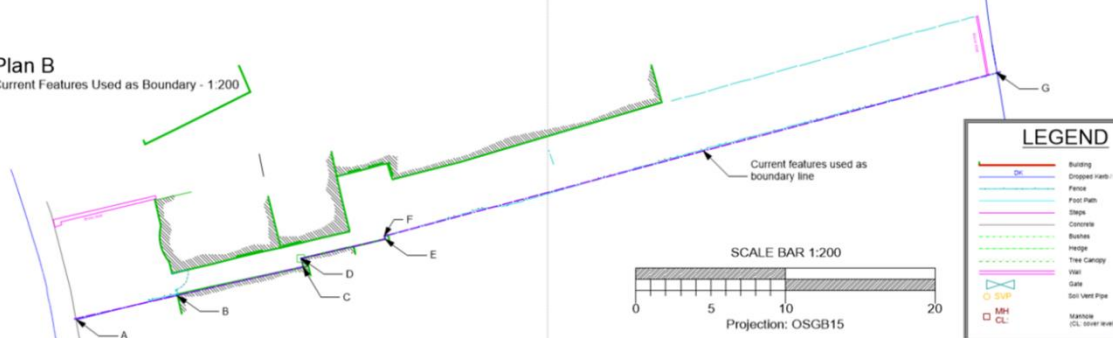




Plan A
Paper Title Plan - 1:200



Plan B
Current Features Used as Boundary - 1:200



LEGEND

- Building
- Dashed line: Edge of Road
- Fence
- Foot Path
- Steps
- Concrete
- Bushes
- Hedge
- Tree Canopy
- Wall
- Gate
- Soil Vent Pipe
- SMP
- MH
- CL
- Manhole (CL cover level, L, invert level)

