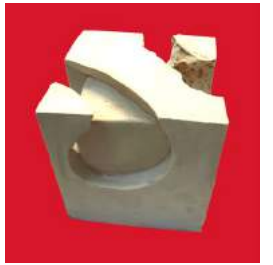
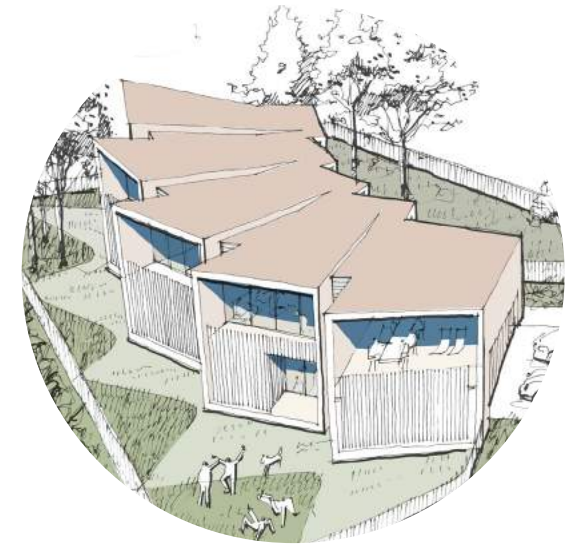


| | | |
|------|---|-----|
| A | N | |
| N | A | |
| | | W U |
| 2017 | | |





04 Hide & Seek Pavilion
Competition Winner



Fletcher Residence
House | Sketch Design **14**



The Connor
Apartments | Construction **06**



16 5 Martin Place
Commercial | Post DA, Tender



12 Maxwell Place
Apartments | Design Development

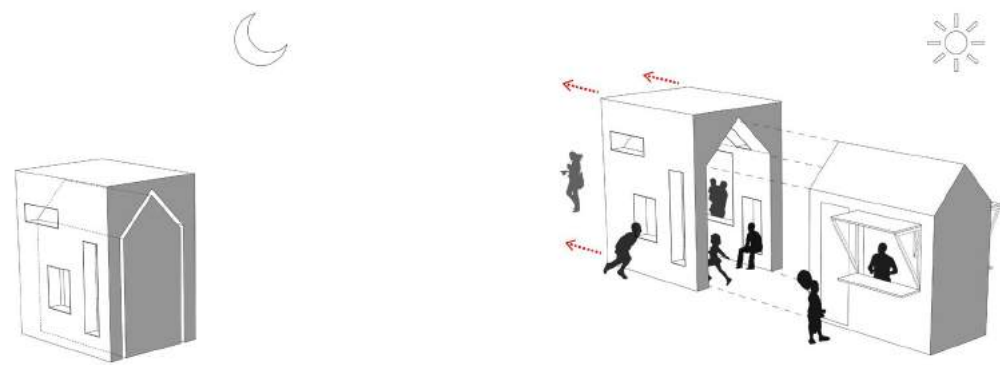


Fun
Objects, Water Color, Drawing **18**

01

Hide & Seek Pavilion

Pavilion by the Sea Competition - Winner



SCULPTING CONCEPT TO REALITY

The Hide and Seek Pavilion is all about adding layers of fun to an otherwise ordinary catalogue kiosk. The pavilion marked the entrance of *Sculpture by the Sea* - an iconic art and sculpture event in Bondi Beach, Sydney. The idea was to give visitors a surprising and interactive experience.

The pavilion is designed as a transformable object. It opens up to two parts during the day when it is active, and closes back to one when inactive.

The two parts of the pavilion: positive

space in the shape of a cubby house serves as catalogue sales and storage for staff. The negative space allows the public to interact with the structure.



Competition Winner



Self raised funding



Self constructed



Online Journal -
<http://sydneypaviliondotcom.wordpress>.



02 | The Connor Smart Design Studio



REFLECTING CITY, PARK AND INDIVIDUALITY

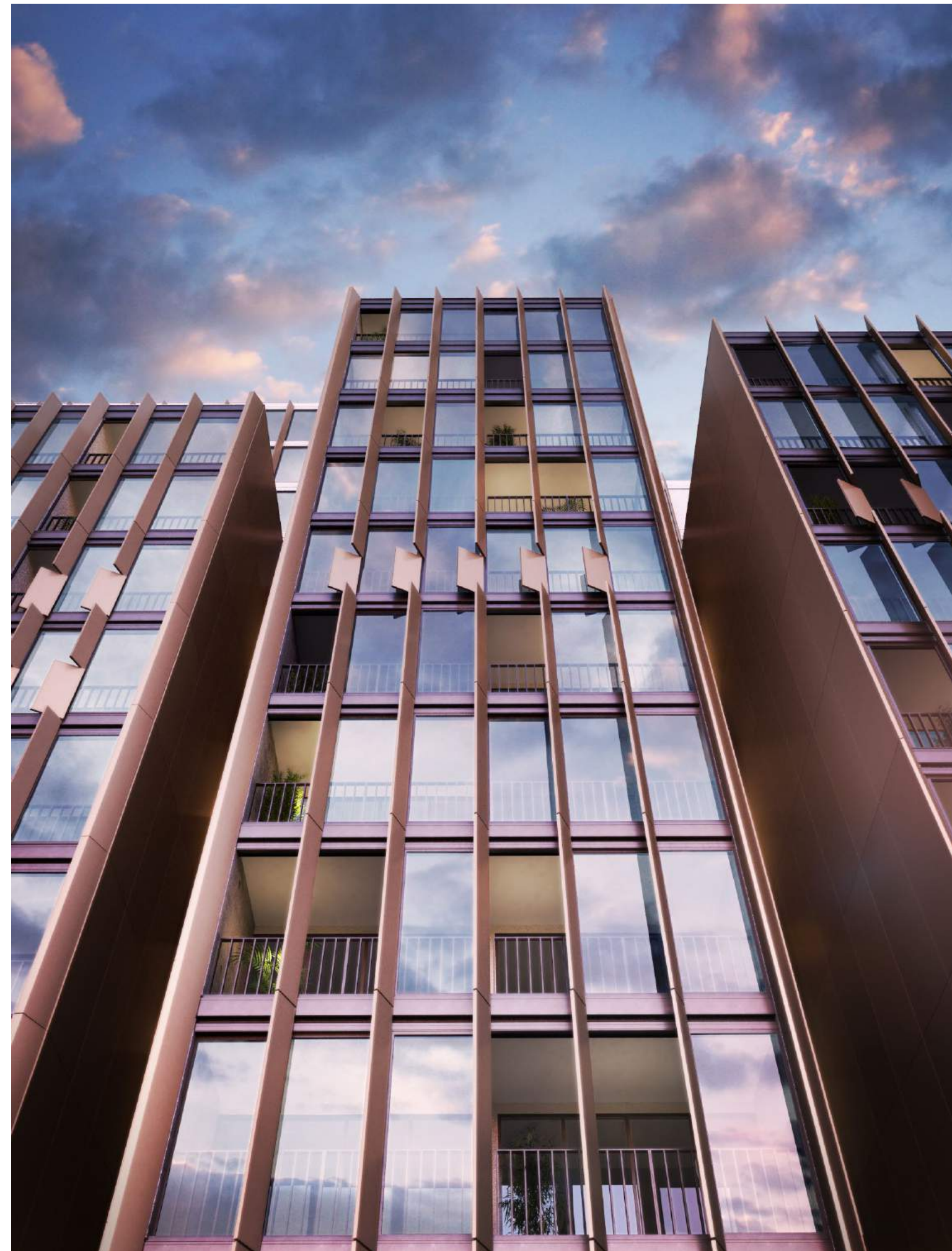
This 13-storey development consists of 178 apartments designed to capitalize on Central Park's expansive views of the city and green. Taking inspiration from the local architecture, Connor is clad in a warmly reflective rich copper color and lenticular fins; a dramatically different building that blends into its prime position.

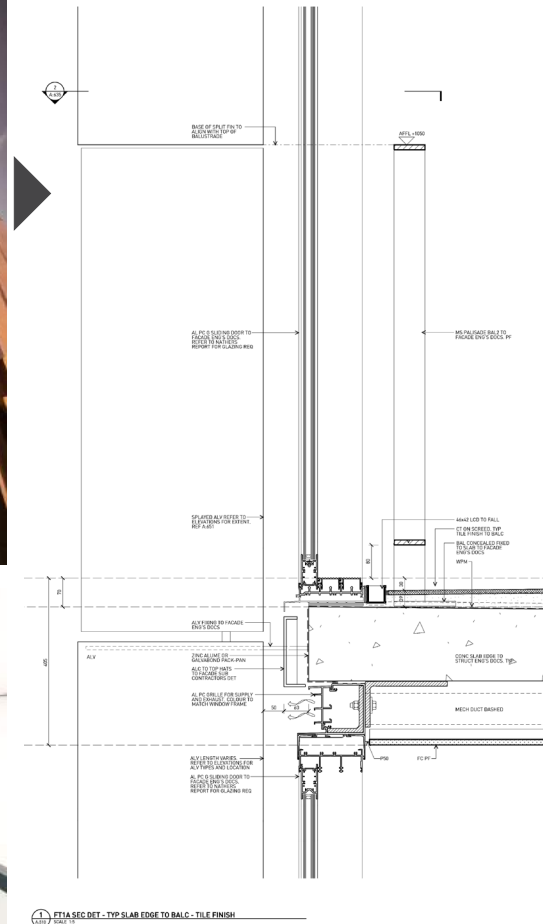
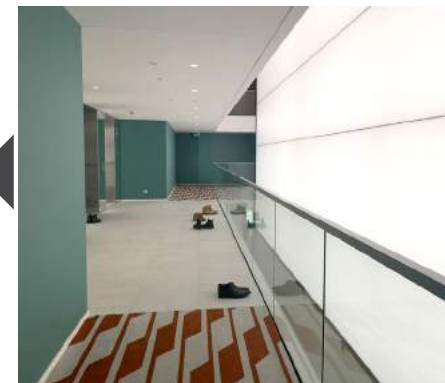
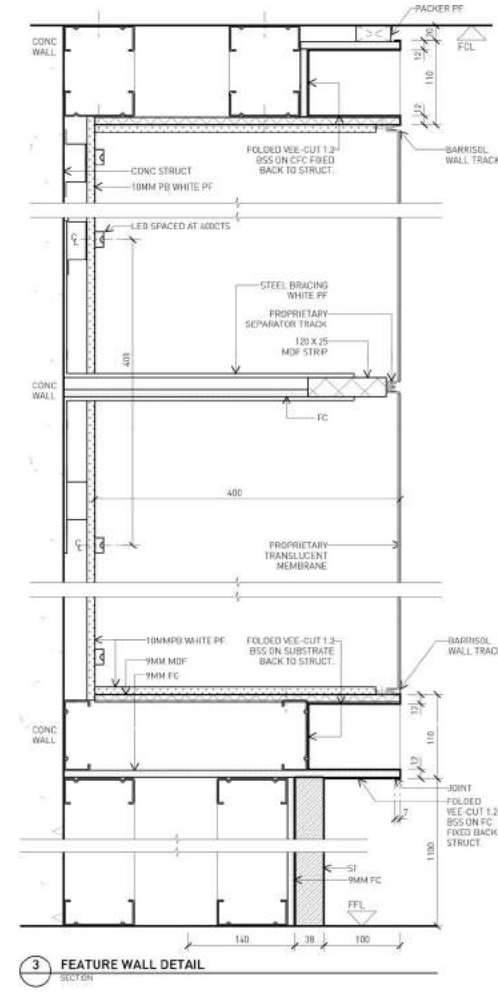
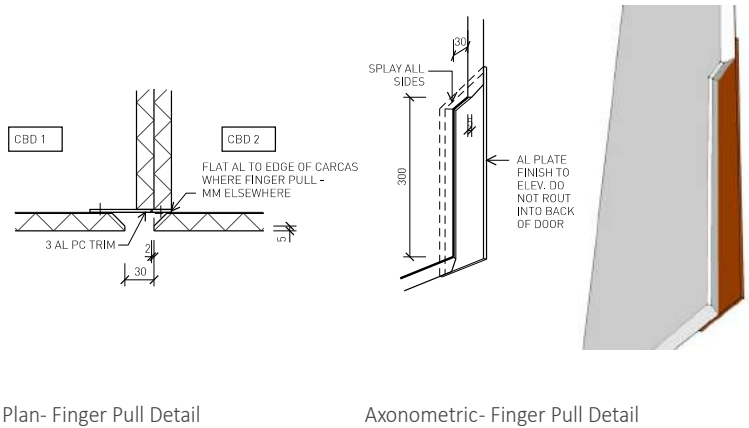
The interiors deviate from the standard timber and white solutions of other developments to provide bold color and texture.

<http://www.centralparksydney.com/live/sold-out/connor>

Main Responsibilities

- Construction documentation
- Details resolution
- Contract administration
- Site inspection & defect report
- Shop drawings review
- Site inspection & defect report
- Interior





RESPONSIBILITIES

From the start of construction, I worked on both the architectural and interior teams of this project. This gave me opportunities to work independently on various tasks, from 1:50 plans to 1:5 intricate details. As one of the main contacts for the builder and client, I had to research and develop complex construction details

and solve problems to meet strict construction timelines.

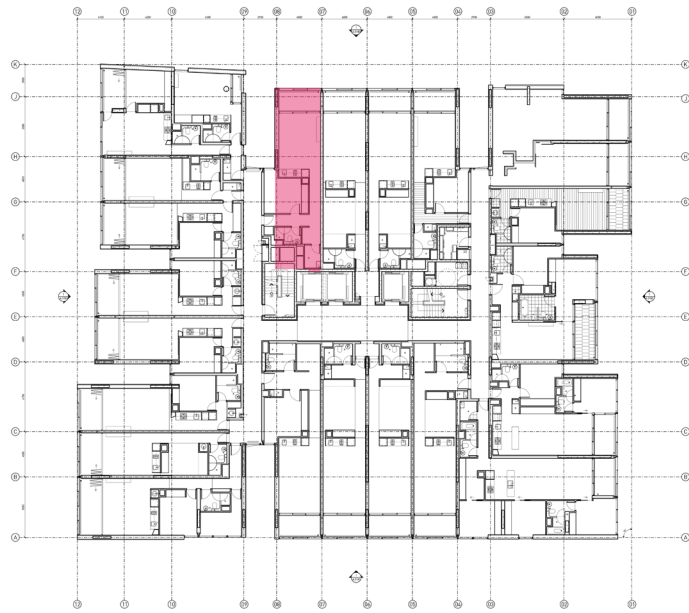
- RCP coordination, checking on site
- Door & hardware packages + others
- Bathroom + kitchen details
- Lobby documentation
- Corridor color scheme
- Material selection

NEGOTIATE, IT IS NOT A FIGHT

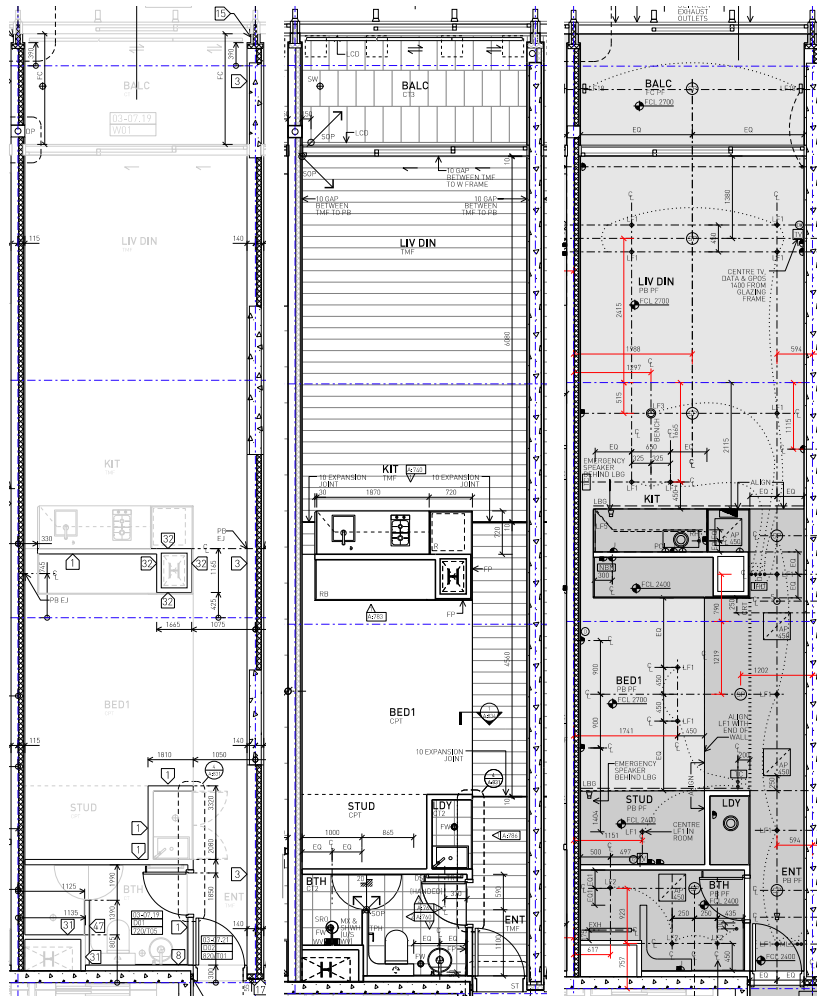
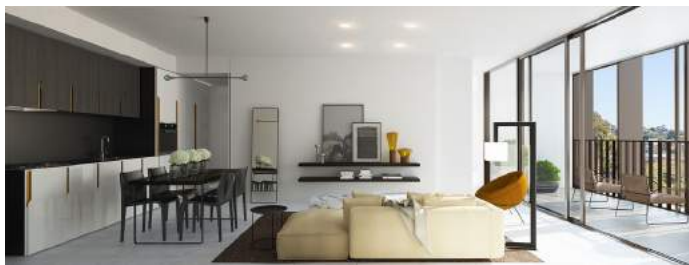
Our goal was to ensure fine detail quality throughout. A key learning for me on this project was learning to negotiate these intricate details with contractors, who have their own cost and technical constraints, without compromising our central vision. To achieve non-standard details, my

communication skills and construction knowledge have improved extensively.

- Lobby feature wall + shop drawings review
- Wall types, wall/window/door joints
- Corridor + lobby details
- Jacuzzi documentation
- Tile set out (all building)
- Facade / balcony details Assist



Level 3-7 Typical Floor Plan

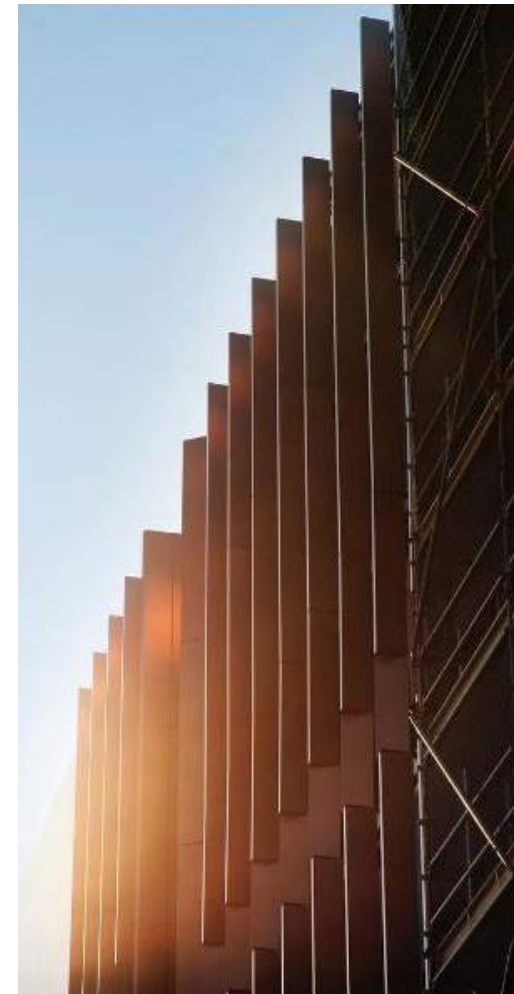


Wall Set Out Plan - Unit 301 Fit Out Plan - Unit 301 RCP - Unit 301

DOUBLE, TRIPLE, QUADRUPLE CHECKING

I was responsible for the majority of the construction documentation for this project, with the assistance of one junior architect and one drafter. Careful delegation and extremely thorough checking were my key learnings during the construction documentation phase.

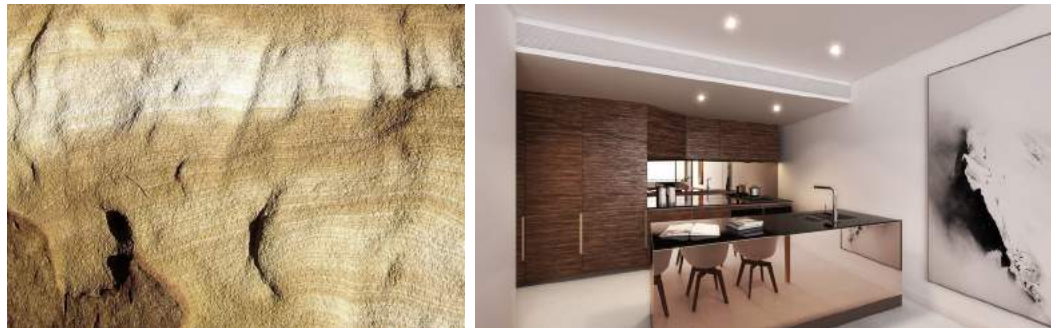
- Wall set out package
- Fit out package
- RCP
- Fire stairs & apartment stairs
- Metal works package
- Signage package
- Glazing set out
- Concrete profile package



MAIN DUTIES

- Attended coordination meetings.
- Discussion and negotiation of changes such as material substitution, alternative construction methods, relocations in RCPs, etc.
- Answered RFIs, tracked down variations.
- Provided urgent drawings or hand sketches when required.
- Site inspection and report writing for interior and exterior.

03 | Maxwell at Harold Park Smart Design Studio

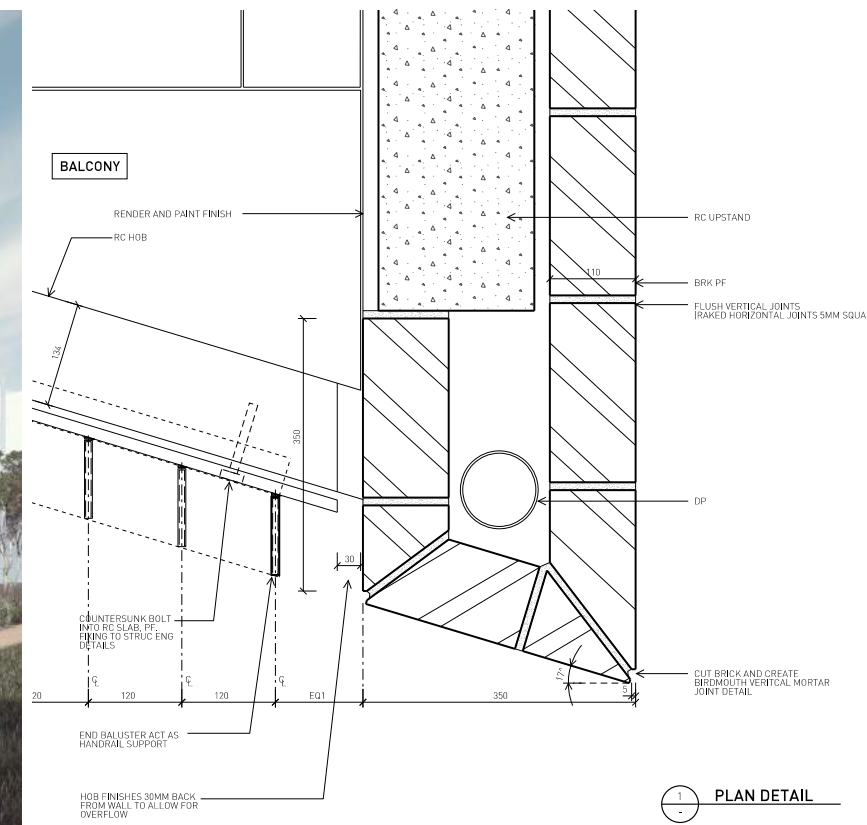


LANDSCAPE AND LIVING

Landscape is the key to Maxwell Place - inspired by a imposing sandstone cliff adjacent to the building. Extending this concept, this building features an angled facade of sheer vertical walls and layered horizontal slabs.

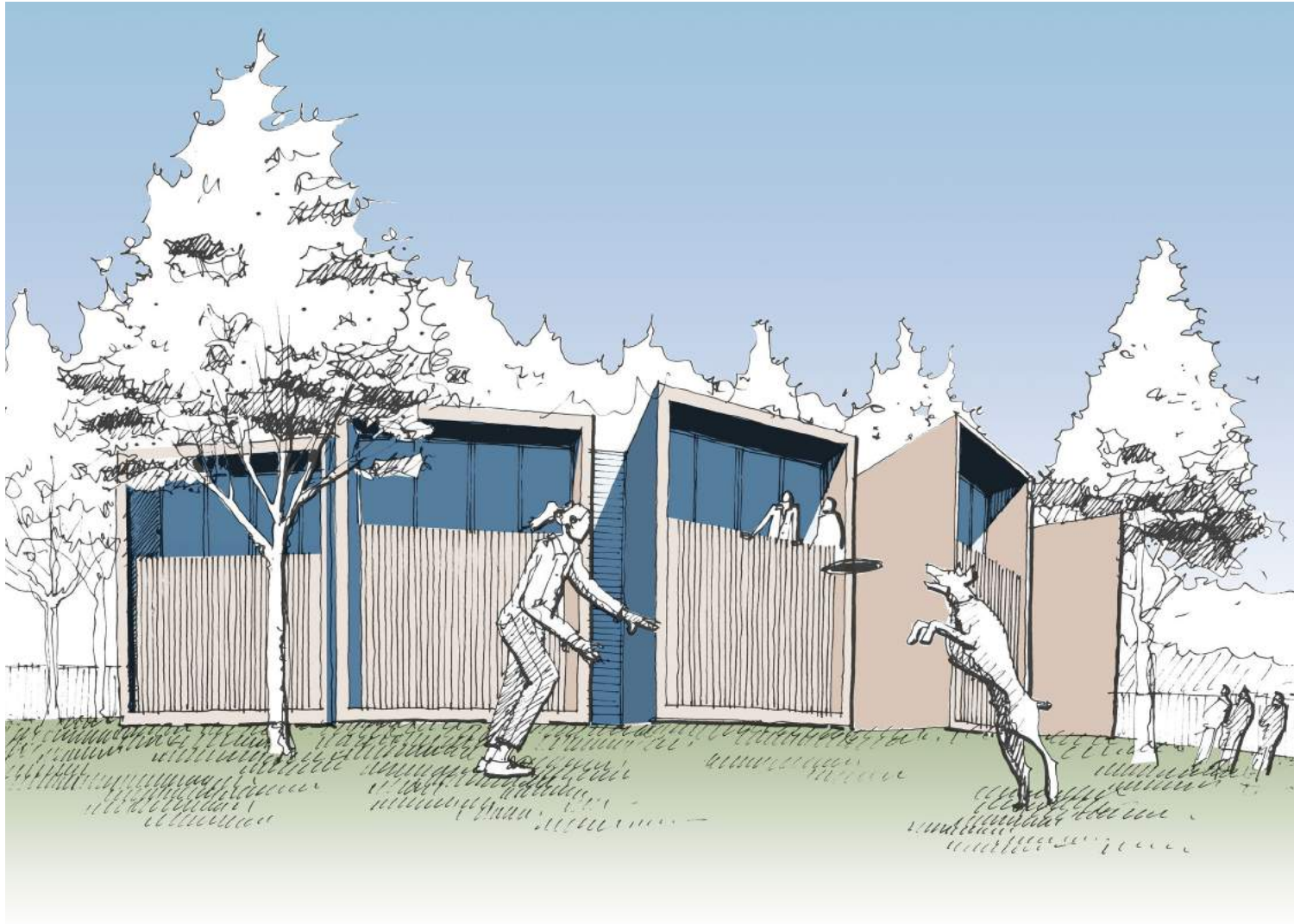
The interior design also references the bulk of the cliff, with monolithic and strong shapes in the kitchen joinery overlaid in a horizontal veneer to reflect the layering of its stone. The color palette of the interior visually reads as a reflection of the surrounding landscape.

- Design development documentation
- Services coordination
- Facade + balustrade details
- Material + color selection
- Sample board design & fabrication

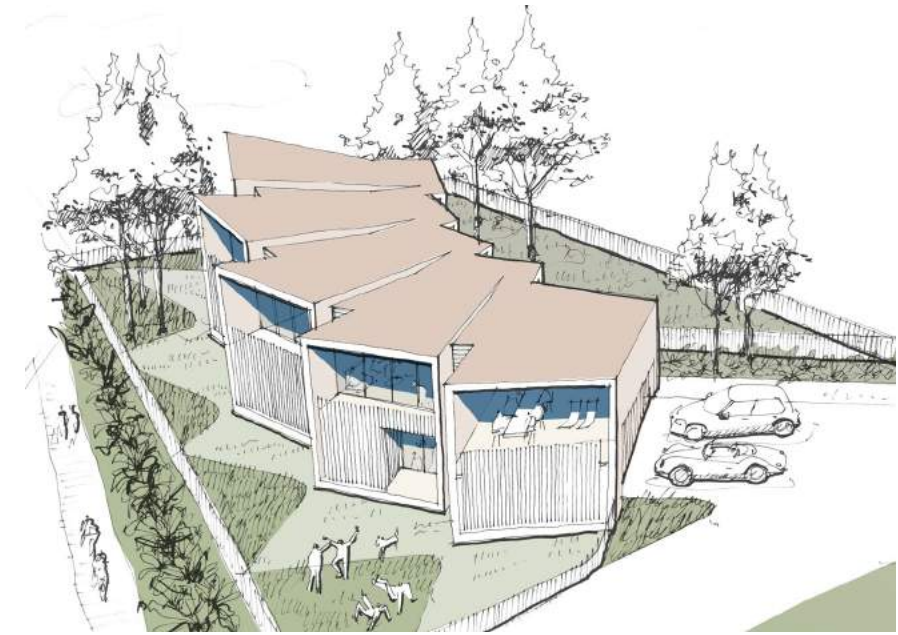


04 Fletcher Residence Smart Design Studio

Fletcher Residence was designed to be a holiday house for a family of four to use and keep in the family for many generations. It is located at Shoalhaven, a place known to be a beach-lover's paradise. This design proposed to capture the panoramic coastal view, and give each room its own slice of the scenery in a private setting.



“A modern home for multiple-generations.”



Main Responsibilities:

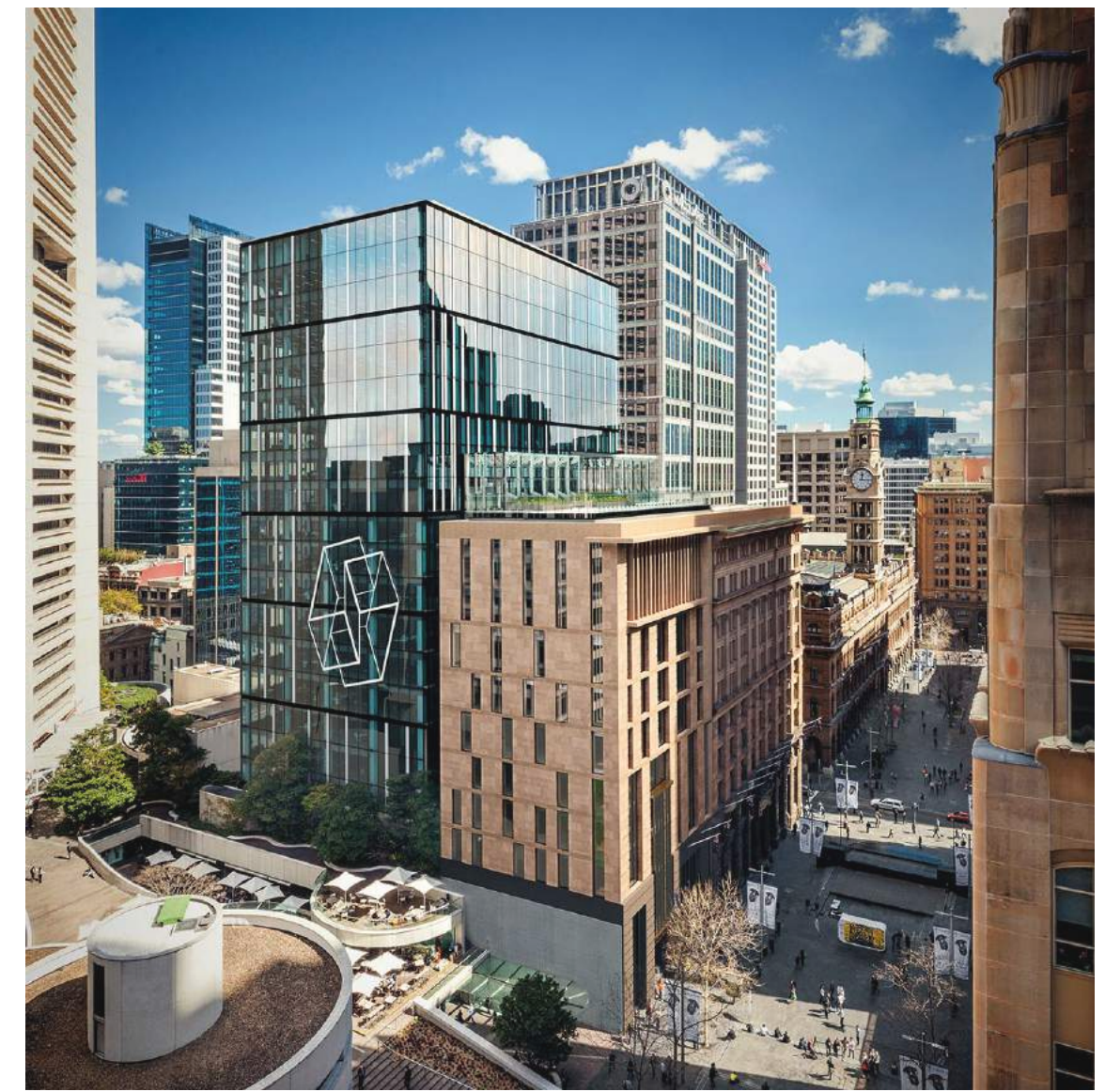
- Compliance checking
- Sketch design
- Planning
- Drafting
- 3D Modelling
- Render

05

5 Martin Place Johnson Pilton Walker

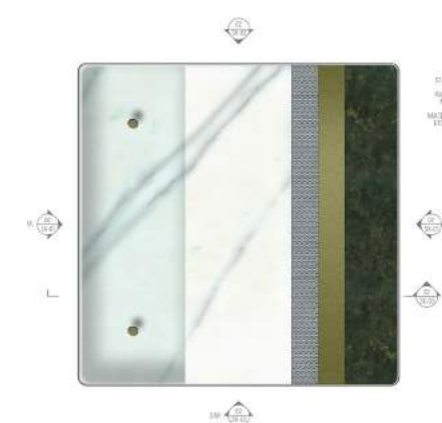
5 Martin Place is an exemplar in heritage led urban renewal re-establishing the importance of the 1916 iconic bank within the heart of the city. It respects views from the Cenotaph and overshadowing of the busy downtown shopping mall, reinforces the sandstone precinct character and recreates a linked sequence of accessible spaces that support a diversity of uses.

It won multiple national awards in Australia. More info: <http://www.jpw.com.au/portfolio/5-martin-place/>

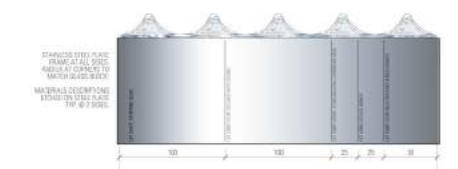


Main Responsibilities:

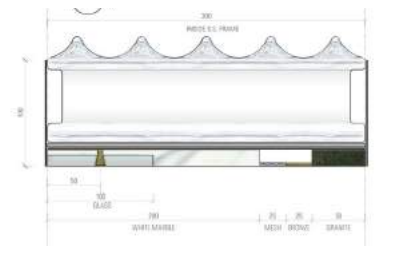
- East facade design layout
- Office fit out design
- Drafting
- Photoshop rendering for plans, sections, elevations, lift etc.
- Lobby sample board design
- Feasibility studies
- Area calculations
- Section 96 application
- Tender documentation
- Design report



Plan - Lift Material Presentation

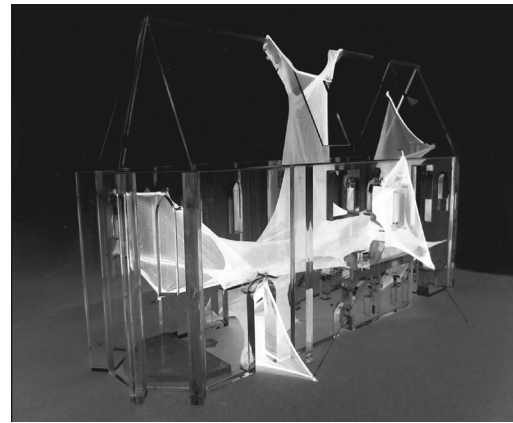


Elevation - Lift Material Presentation



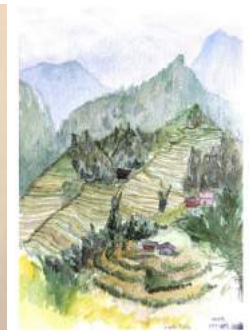
Section - Lift Material Presentation

06 | Fun Hobbies & Interests



| Modelling with various materials |

| Object design, Plywood & perspex |



| Experiments, Explorations, Practice. |

