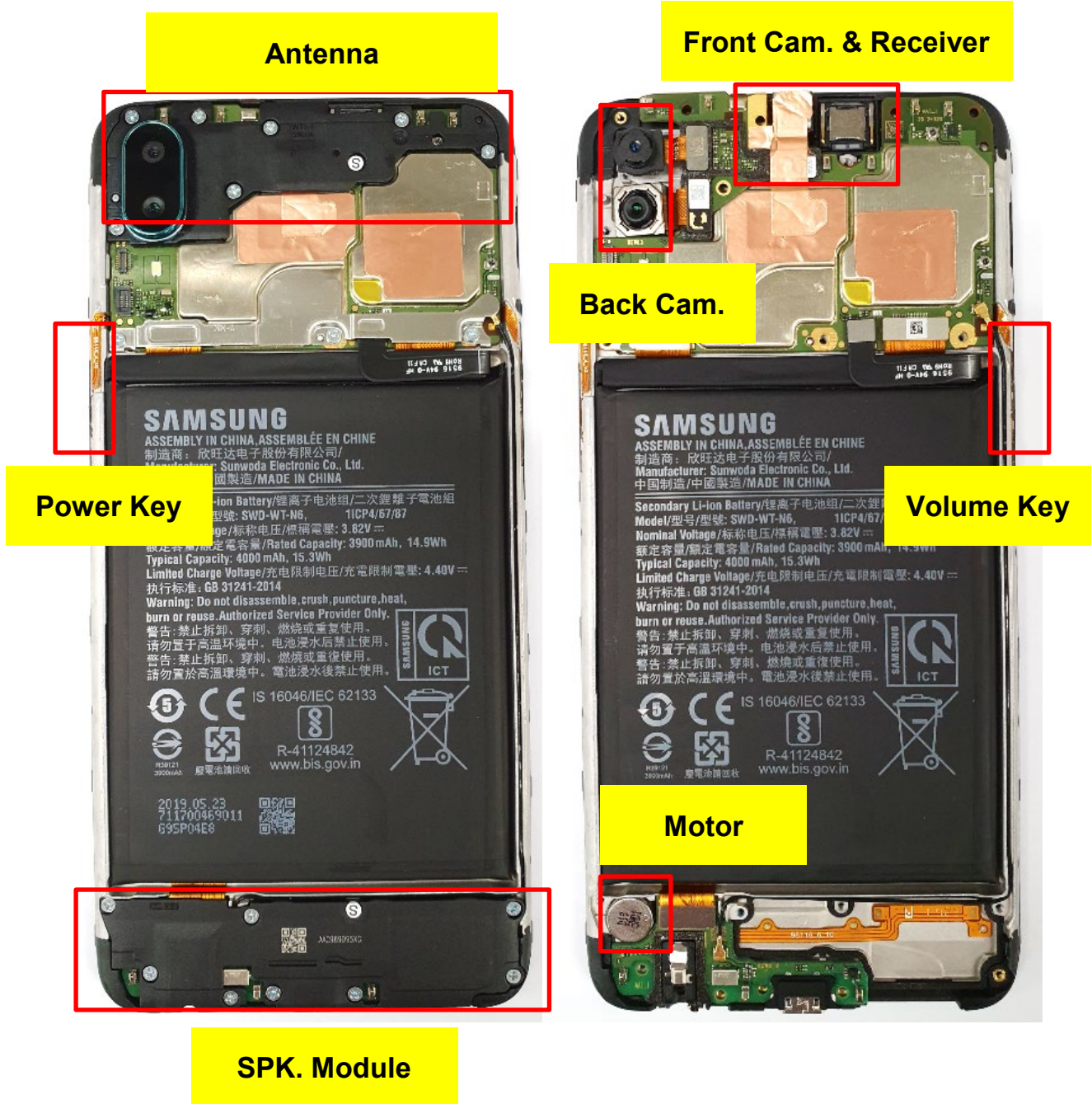


## 7. Level 2 Repair

### 7-1. Components on the Rear Case



---

## 7. Level 2 Repair

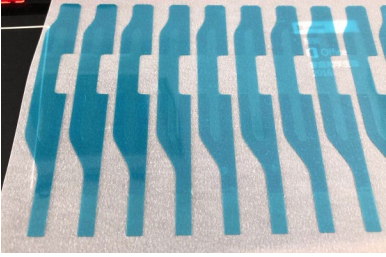
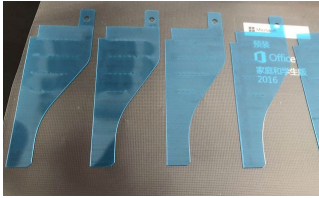
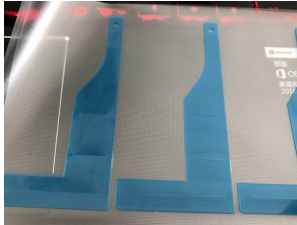
---

### 7-2. Pre-requisite

	
<b>Tweezers / Disass'y Stick / Screw Driver</b>	<b>Anti-static Gloves</b>
	
<b>Anti-static Mat</b>	<b>SIM thimble</b>
	
<b>Ethyl Alcohol</b>	<b>Cotton Swab</b>

## 7. Level 2 Repair

### 7-3. Parts when replacement the battery after repair.

SVC KIT CODE	Parts Name	Image	Remarks
<p style="text-align: center;">SVC Battery Tape [GH81-17559A]</p>	<p style="text-align: center;">battery adhesive tape(No.1)</p>		<p style="text-align: center;">Left items must be changed to the new one in case of disassemble the Battery.</p>
	<p style="text-align: center;">battery adhesive tape(No.2)</p>		
	<p style="text-align: center;">battery adhesive tape(No.3)</p>		

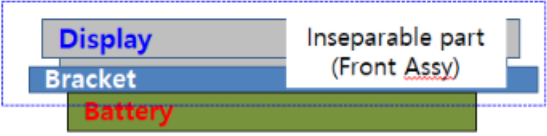
---

## 7. Level 2 Repair

---

### 7-4. Battery replacement

- 1) Do not reuse the battery.
- 2) Do not detach the battery from the bracket or display
  - If you detached battery, it has potential damage physically.
- 3) If you need to detach a battery from the bracket or display.
  - Make sure replace the battery with new one.

Type	Structure	Battery replace
 <p>The diagram shows three components: 'Display' (grey), 'Bracket' (blue), and 'Battery' (green). 'Display' and 'Bracket' are enclosed in a dashed blue box and labeled as 'Inseparable part (Front Assy)'. 'Battery' is positioned below the 'Bracket'.</p>	<p>Display and Bracket are not separated.</p> <p>Battery replacement is required when Front Ass'y component is defected.</p> <p>If the Front Assy is supplied without battery, please order battery together.</p> <p>⌘ Do not reuse the battery.</p>	<p>○</p>

## 7. Level 2 Repair

### 7-5. Disassembly

1. Disassemble SD Card SIM Tray from device.



**※ Caution**

1) Be care of scratch

2. Remove Rear Cover from upper right to bottom side using disassemble tool.



**※ Caution**

1) Be care of scratch

3. Remove finger print FPCB using tool.



**※ Caution**

1) Be care of scratch  
2) Be care of Rear and Finger print damage

4. Remove all 9 points of screws and disassemble the SPK box.



**※ Caution**

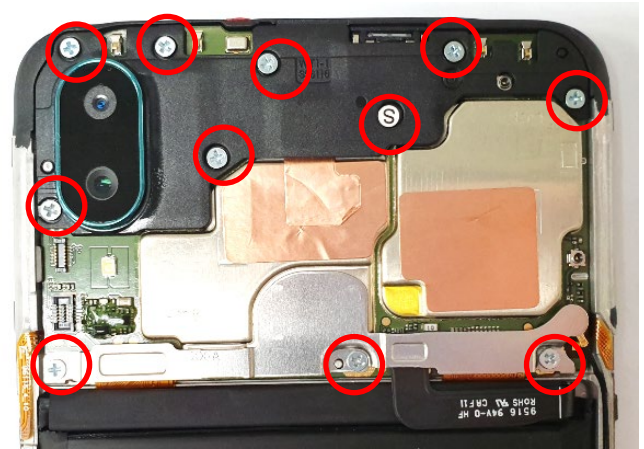
1) Be care of Rear damage

## 7. Level 2 Repair

5. Remove the coaxial cable and FPCB Conn and disassemble the SUB PBA.



6. Remove the all 11 screws and disassemble the SUB PBA



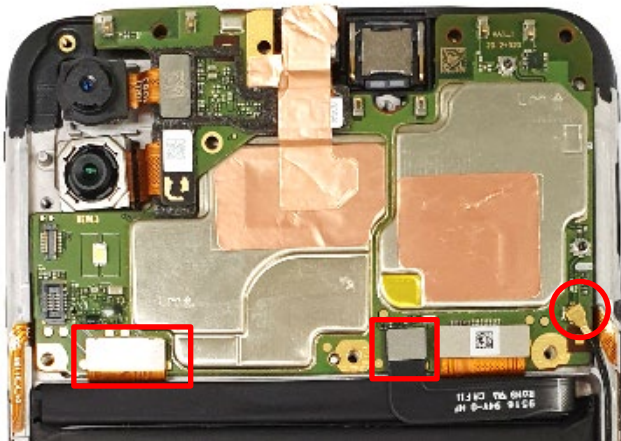
**\* Caution**

1) Be care of several kinds of damage at PBA and FPCB.

**\* Caution**

1) Be care of scratch

7. Remove the coaxial cable and FPCB.



8. Remove the Main PBA and others.



**\* Caution**

1) Be care of several kinds of damage at PBA and FPCB.

**\* Caution**

1) Be care of several kinds of damage at PBA and FPCB.

## 7. Level 2 Repair

9. Put ethyl alcohol into the outside of battery with clean swab and slightly tilt the front case to soak alcohol inside enough.



10. Lift battery using battery disassembly vacuum.



**⚠ Caution**

1) Do NOT use any sharp tools(disassembly stick, knife, any plastic or tweezers).

**⚠ Caution**

1) Be careful not to damage the Battery.

11. Remove all residues of tapes.



11. Remove the Motor, RCV, Power & Volume key.



**⚠ Caution**

1) Be care of several kinds of damage

**⚠ Caution**

1) Be care of several kinds of damage

# 7. Level 2 Repair

## 7-6. Assembly

1. Attach the battery tapes.



2. Attach the battery and press it using your hands.



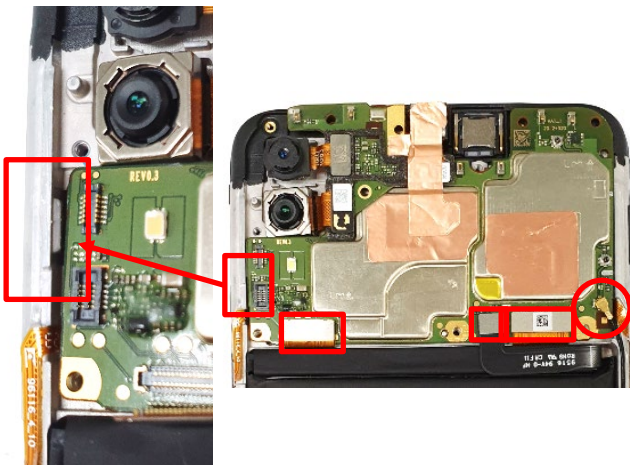
※ Caution

1) Be care of tapes damage

※ Caution

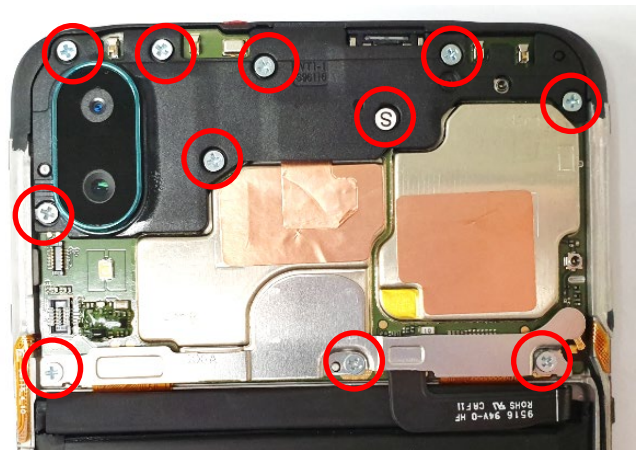
1) Be care of battery damage.

3. Place the main PBA on the bracket and connect all connectors firmly.



4. Tighten 11 screws.

※ Screw torque: 0.6 +/-0.5kgf



※ Caution

1) Be care of FPCB damage.

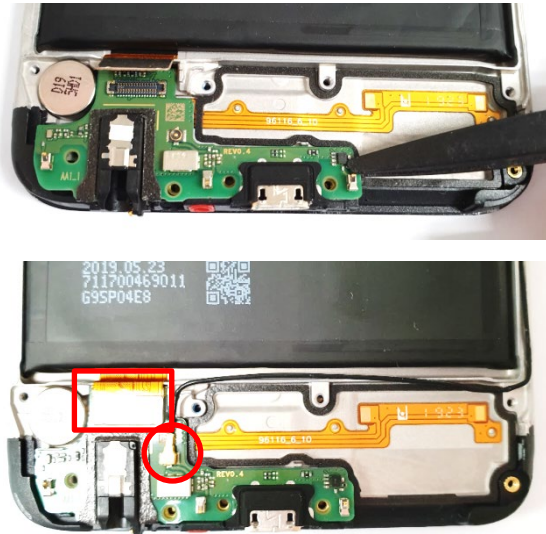
※ Caution

1) Be care of damage.



## 7. Level 2 Repair

3. Place the SUB PBA and connect all connectors firmly.



4. Assemble the SPK box and tighten 9 screws.

※ Screw torque: 0.6 /-0.5kgf



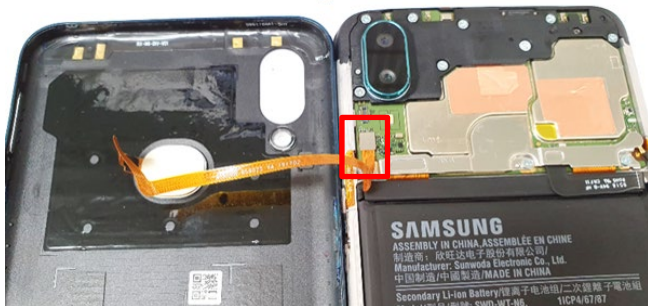
※ Caution

1) Be care of FPCB and coaxial cable

※ Caution

1) Be care of SPK box damage

5. Connect the finger print sensor FPCB and assemble the rear cover.



6. Press the outside of Rear cover with thumbs enough.



※ Caution

1) Be care of scratch and REAR damage

※ Caution

1) Be care of scratch and REAR damage