

# TABLE OF CONTENTS

## PHASE 1

### **BIG BANG DROP**

THE BIG BANG DROP 205 NFTS

### **SERIES 1**

PILLARS OF CREATION  
CHRISTMAS AIRDROP

### **SERIES 2 ( 2D PLANETS)**

2D PLANETS (TYPES OF ELEMENTS)  
2D PLANETS (MERGE SYSTEM)

INTRODUCING 3D ANIMATED PLANETS  
PASSIVE INCOME  
FIRST 3D PLANETS WITH MUSIC + GLOW  
TYPES OF 3D PLANETS  
3D PLANETS AND METaverse

### **SERIES 3**

CRAFT YOUR OWN PLANET?  
RAW MATERIALS  
HOW TO CREATE YOUR PLANET  
CRAFTER PLANETS AND METaverse





# TABLE OF CONTENTS

## PHASE 2 METAVERSE

### **BUILDING THE METAVERSE**

WHAT IS PILLARS OF CREATION METAVERSE

### **TYPE OF DROPS**

EXO PLANETS

DWARF STARS

STARS

SOLAR SYSTEMS

SUPERNOVAS/BLACKHOLES

### **STRUCTURE OF THE MILKYWAY**

1. PERSEUS ARM

2. SCUTUM - CRUZ ARM

3. NORMA - CENTAURUS

4. SAGITTARIUS ARMS

5. ORION ARM





# PHASE 1

NOVEMBER 17TH 2021 (SOLD OUT)

## THE BIG BANG DROP

THE BIG BANG DROP CONSISTED OF 205 FREE NFTS. HOLDING A BIG BANG NFT GUARANTEES YOU DISCOUNTS FOR ALL FUTURE DROPS. HOLDING THIS + A SERIES ONE PILLARS OF CREATION NFT MAKES YOU ELIGIBLE FOR AIRDROPS AND SPECIAL DROPS (PAGE 7 FOR MORE DETAILS)





# PHASE 1

DECEMBER 14TH 2021 (COMPLETED )

## SERIES 1

PILLARS OF CREATION SERIES 1 IS A 2D COLLECTION OF 300 NFTS. SERIES 1 HOLDERS ARE ELIGIBLE TO GET XMAS AIRDROP AS WELL AS SPECIAL DROPS THAT REQUIRE A FREE MINT FROM THE BIG BANG DROP



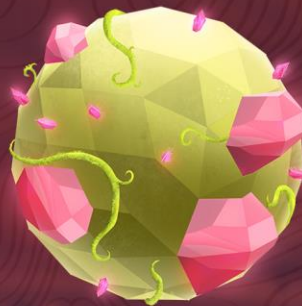


# PHASE 1

DECEMBER 24TH 2021 (COMPLETED )

## AIRDROPS

CHRISTMAS AIRDROP WAS GIVEN TO HOLDERS OF SERIES 1 OR FREE MINT  
TITANS = RED PLANET (MOST ACTIVE MEMBERS)  
ETERNALS = YELLOW PLANET (HOLDERS OF BOTH SERIES 1 AND BB)  
GUARDIANS = BLUE PLANET (HOLDERS OF EITHER SERIES 1 OR BB)





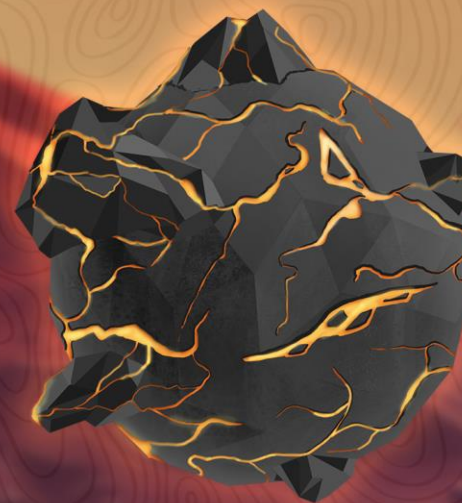
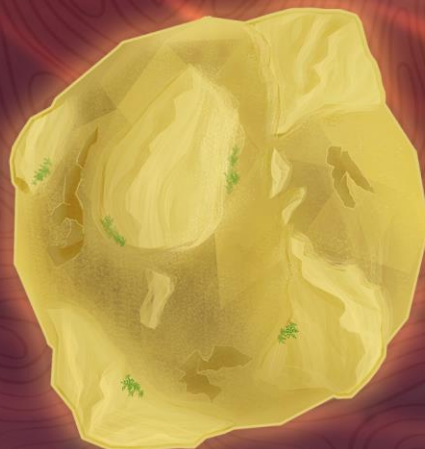
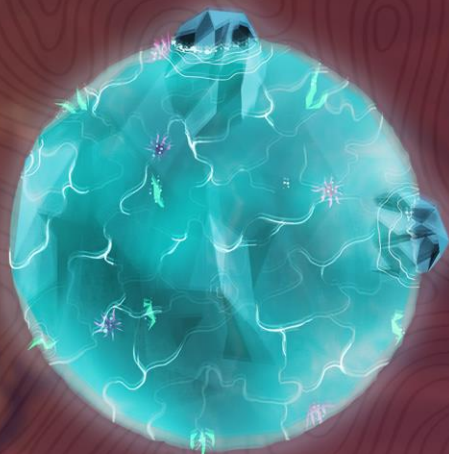
Q1 OF 2022

# PHASE 1

LAUNCH DATE JANUARY 31TH 2022

## SERIES 2

INTRODUCING 2D PLANETS





Q1 OF 2022

# PHASE 1

SERIES 2

## ELEMENTS

2D PLANETS WILL HAVE 10 DIFFERENT TYPES OF ELEMENTS WHICH WILL CONTAIN 30 DIFFERENT VARIATIONS. HOLDING AND MERGING 2 PLANETS OF THE SAME ELEMENT WILL TRANSFORM IT INTO A 3D PLANET

DIAMOND

FIRE

IRON

EARTH

WOOD

AQUA

SAND

ICE

GAS

ADA





Q1 OF 2022

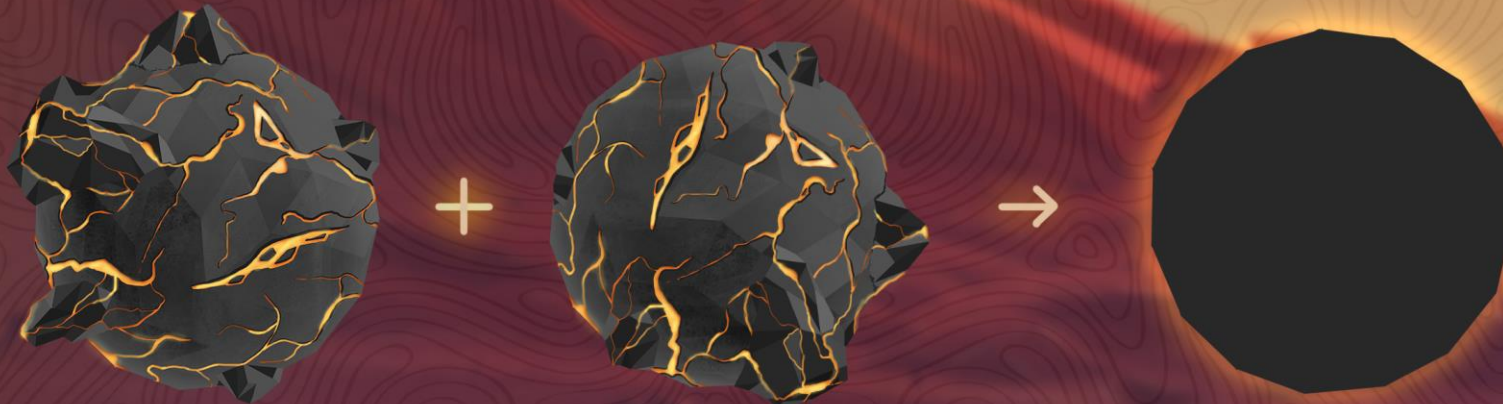
# PHASE 1

SERIES 2

## MERGE SYSTEM

IN ORDER TO MERGE YOUR 2D PLANETS INTO A 3D PLANET YOU MUST HOLD TWO 2D PLANETS OF THE SAME ELEMENT.

2 FIRE ELEMENTS WILL MERGE INTO AN ANIMATED 3D FIRE PLANET





Q1 OF 2022

# PHASE 1

## SPECIAL DROP FOR HOLDERS

PEOPLE HOLDING 2 BIG BANG + 1 EPIC OR LEGENDARY SERIES 1 WILL GET A FREE 2D PLANET FROM SERIES 2



+



PEOPLE HOLDING 2 BIG BANG + 3 SERIES 1 (COMMON, UNCOMMON, RARE OR SUPER RARE) WILL GET A 3D PLANET.



+





Q1 OF 2022

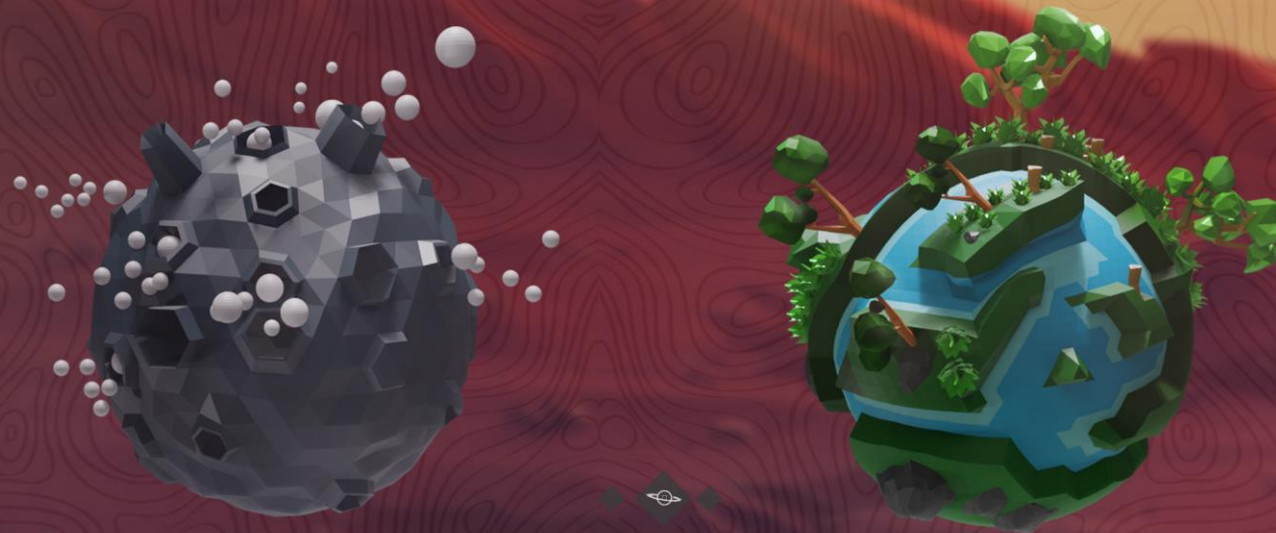
# PHASE 1

SERIES 2

## 3D ANIMATED PLANETS

INTRODUCING THE FIRST 3D ANIMATED PLANETS WITH AMBIENT MUSIC, GLOW AND PASSIVE INCOME. 3D PLANETS COME FROM MERGED 2D PLANETS AND WILL NOT BE MINTED SEPARATELY

3D PLANET HOLDERS WILL BE ELIGIBLE TO ENTER OUR 3D METAVERSE BEFORE ANYONE ELSE AND PICK A SECTION IN THE MILKYWAY (PAGE 16 FOR MORE INFORMATION)





Q1 OF 2022

# PHASE 1

SERIES 2

## 3D PLANET RARITIES

PILLARS OF CREATION WILL BE THE FIRST 3D ANIMATED PLANETS THAT WILL CONTAIN AMBIENT MUSIC AND GLOWING PLANETS TO GIVE YOU THAT FEELING THAT YOU'RE IN OUTER SPACE

EACH 3D PLANET ELEMENT WILL HAVE 15 UNIQUE DESIGNS

RARITIES:

6.6% WILL CONTAIN MUSIC + GLOW

13.3% GLOW ONLY

13.3% MUSIC ONLY

66.8% NORMAL 3D





Q1 OF 2022

# PHASE 1

SERIES 2

## TYPE OF PLANET AFTER MERGING

YOU WILL RECEIVE A 3D PLANET BASED ON THE ELEMENTS YOU MERGE FROM THE 2D PLANETS.

EACH 3D PLANET WILL BE UNIQUE FROM EACH OTHER

EX. IF YOU MERGE 2 DIAMOND 2D PLANETS YOU WILL RECEIVE A 3D ANIMATED DIAMOND PLANET. THE 3D PLANET WILL HAVE THE SAME ELEMENT BUT WITH A DIFFERENT STRUCTURE TO MAKE SURE EACH PLANET LANDSCAPE HAS ITS UNIQUE TOUCH





Q2 OF 2022

# PHASE 1

SERIES 2

## CRAFTING YOUR OWN PLANET

WE WILL LET THE COMMUNITY DECIDE HOW THEY WANT THEIR PLANET TO LOOK LIKE. THE TEAM WILL CREATE A VAST LIST OF DIFFERENT SURFACES/ELEMENTS AND RAW MATERIALS FOR YOU TO CREATE YOUR OWN MINI WORLDS.

EACH SURFACE, ELEMENTS, AND MATERIAL WILL HAVE ITS OWN PRICE ALONG WITH ITS RARITY. YOU WILL ALSO GET A CHANCE TO CREATE GLOWING PLANETS TO MAKE THEM JUST SLIGHTLY MORE RARE AND EPIC.

THERE WILL BE A TIME FRAME IN WHICH YOU WILL BE ABLE TO CREATE YOUR PLANET (EX.1 WEEK) SO IF YOU STILL WANT TO ADD AN EXTRA ELEMENT AFTER SUBMITTING YOUR PLANET APPLICATION IN OUR WEBSITE, ALL YOU HAVE TO DO IS EMAIL US AND WE WILL INCORPORATE IT AS LONG AS IT'S WITHIN THE TIME FRAME

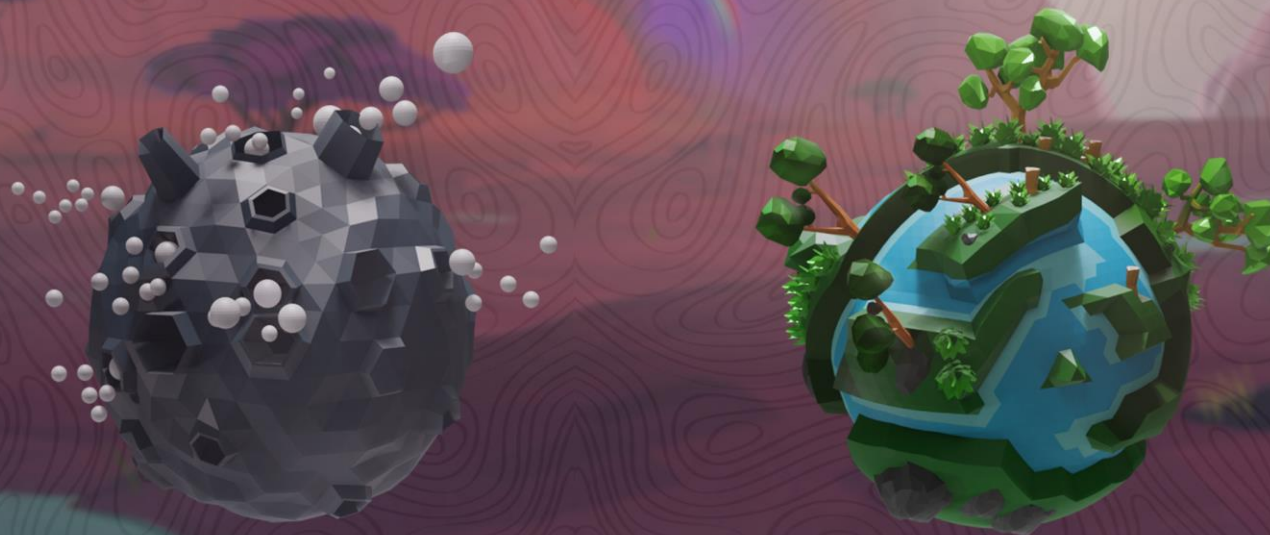




# PHASE 2

## METAVEVERSE EARLY ADOPTERS

3D PLANET HOLDERS AND CRAFTED PLANETS WILL AUTOMATICALLY HAVE A SPOT IN THE MILKYWAY METAVEVERSE (MORE INFORMATION ON PHASE 2)





Q3 OF 2022

# PHASE 2

## PILLARS OF CREATION MILKYWAY METAVERSE

PILLARS OF CREATION 3D METAVERSE IS A 3D ENVIRONMENT THAT WILL ALLOW YOU TO BUY, TRADE, AND SELL PLANETS WITHIN THE METAVERSE

YOU WILL BE ABLE TO ADD ANY LINK TO YOUR PLANET TO ADVERTISE ANYTHING FROM YOUR SOCIAL MEDIA, YOUR OWN NFT PROJECT, ETC.

YOU WILL BE ABLE TO NAVIGATE THE MILKYWAY IN 3D BY ZOOMING IN AND OUT AND CHECKING OTHER PLANETS AROUND THE GALAXY.

- YOU WILL ALSO GET THE CHOICE TO NAME YOUR OWN PLANETS





Q3 OF 2022

# PHASE 2

**THE METAVERSE IS HERE!**

PILLARS OF CREATIONS IS GOING TO RELEASE 5 TYPES OF DROPS AT THE SAME TIME

EXO PLANETS = 500 NFTS\*

DWARF STARS = 400 NFTS\*

STARS = 250 NFTS\*

SOLAR SYSTEMS = 120 NFTS\*

SUPERNOVAS/BLACKHOLES = 40 NFTS\*

\*COUNT OF NFT PER DROP HAS NOT BEEN FINALIZED

YOU WILL BE ABLE TO PICK ANY OF THE DROPS. EACH DROP WILL HAVE ITS OWN AMOUNT OF NFTS AND PRICES

THESE WILL THEN BE PLACED INTO SPECIFIC PARTS OF THE MILKYWAY DEPENDING ON WHAT YOU MINTED (MORE INFORMATION PAGE)





Q3 OF 2022

# PHASE 2

## PILLARS OF CREATION MILKYWAY METAVERSE

THE TYPE OF NFT YOU MINT WILL DICTATE WHERE IT WILL BE PLACED IN SPECIFIC SECTORS OF THE GALAXY

THE MILKYWAY IS COMPOSED OF 5 DIFFERENT ARMS WHICH CORRESPONDS TO THE 5 DIFFERENT DROPS

1. PERSEUS ARM
2. SCUTUM - CRUZ ARM
3. NORMA - CENTAURUS
4. SAGITTARIUS ARMS
5. ORION ARM

(REFERENCE IMAGE NEXT PAGE)

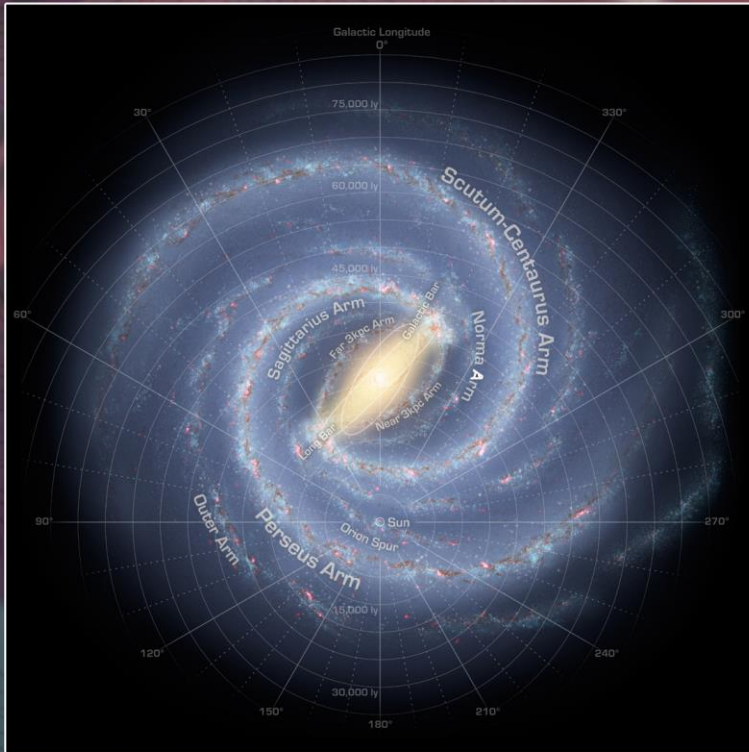




Q3 OF 2022

# PHASE 2

## PILLARS OF CREATION METaverse MILKYWAY



### MILKYWAY SAMPLE MAP

DEPENDING ON WHAT NFT YOU MINT ,  
YOU WILL BE DESIGNATED A PLACE  
IN THE MILKYWAY

EACH ARM WILL HAVE DIFFERENT RARITIES

RARITIES (TBA)



# PHASE 2

## BACKSTORY BEHIND THE MILKYWAY

### PERSEUS ARM

THE PERSEUS ARM IS ONE OF TWO MAJOR SPIRAL ARMS OF THE MILKY WAY GALAXY. THE SECOND MAJOR ARM IS CALLED THE SCUTUM-CENTAURUS ARM. THE PERSEUS ARM BEGINS FROM THE DISTAL END OF THE LONG MILKY WAY CENTRAL BAR. PREVIOUSLY THOUGHT TO BE 13,000 LIGHT-YEARS AWAY, IT IS NOW THOUGHT TO LIE 6,400 LIGHT YEARS FROM THE SOLAR SYSTEM.

### SCUTUM- CRUZ ARM

THE SCUTUM-CENTAURUS ARM, ALSO KNOWN AS SCUTUM-CRUX ARM, IS A LONG, DIFFUSE CURVING STREAMER OF STARS, GAS AND DUST THAT SPIRALS OUTWARD FROM THE PROXIMATE END OF THE MILKY WAY'S CENTRAL BAR. THE MILKY WAY HAS BEEN POSITED SINCE THE 1950S TO HAVE FOUR SPIRAL ARMS — NUMEROUS STUDIES CONTEST OR NUANCE THIS NUMBER.

### NORMA - CENTAURUS

THE NORMA ARM IS A MINOR SPIRAL ARM OF THE MILKY WAY EXTENDING FROM AND AROUND ITS CENTRAL HUB REGION. ... THE OUTER PART OF IT IS IDENTIFIED EITHER WITH THE CYGNUS ARM, WHICH LIES OUTSIDE THE PERSEUS ARM, OR THE OUTER ARM, WHICH IS LOCATED FARTHER AWAY FROM THE CENTER OF THE GALAXY THAN THE CYGNUS ARM.





# PHASE 2

## BACKSTORY BEHIND THE MILKYWAY

### SAGITTARIUS ARMS

THE SAGITTARIUS ARM OF THE MILKY WAY SPIRALS OUT OF OUR GALAXY'S CENTER, FORMING A SWOOPING HIGHWAY OF GAS THAT SPANS TENS OF THOUSANDS OF LIGHT-YEARS. THIS HIGHWAY IS DOTTED WITH THE HEADLIGHTS OF BILLIONS OF STARS, ALL SEEMINGLY MOVING ALONG THE SAME CURVY TRACK. BUT NOW, ASTRONOMERS HAVE FOUND SOMETHING UNUSUAL — A "BREAK" IN THE ARM, SLASHING PERPENDICULARLY THROUGH THE SPIRAL LIKE A SPLINTER POKING THROUGH A PIECE OF WOOD. SPANNING ABOUT 3,000 LIGHT-YEARS, THIS STELLAR SPLINTER MAKES UP JUST A FRACTION OF THE MILKY WAY (WHICH HAS A DIAMETER OF ABOUT 100,000 LIGHT-YEARS).

### ORION ARM

THE ORION ARM IS A MINOR SPIRAL ARM OF THE MILKY WAY GALAXY THAT IS 3,500 LIGHT-YEARS (1,100 PARSECS) ACROSS AND APPROXIMATELY 10,000 LIGHT-YEARS (3,100 PARSECS) IN LENGTH, CONTAINING THE SOLAR SYSTEM, INCLUDING EARTH.

