



So many find the strength to move
FORWARD
because of people like you...

VOLUNTEER

We can't do this without you. Volunteer at gryphon.org/volunteer

GIVE

Every dollar makes a difference. Donate at gryphon.org

SPONSOR

Want to support by sponsoring? Contact us about Suicide Prevention Month in September or EAT DRINK GIVE in February.

RECOMMEND

Tell others about services! Anyone can call 269-381-HELP for crisis support or dial 2-1-1 for referrals, mediation, and volunteering.

CONNECT

Like Us on Facebook
Keep up-to-date by signing up for e-news at our website gryphon.org

2017 Board of Directors

Jared Arnold (Chair) • Mark Garrison (Vice Chair) • Matt Lahman (Treasurer)
Guy Golomb (Secretary) • Heather Lettow • Melissa Gilbert • Erin Praedel • Timothy Charron
Tom Danielson • Jim Lewis • Kevin Moore • Leann Sanborn • Jim Edgerton
Michael Raphelson • Jennifer Wu • David Fatzinger



THE FOUNDATION
OF HEALING IS
CONNECTION.



SUPPORT FOR LIFE'S CHALLENGES.

We've been helping those in conflict and crisis since 1970.

Our mission is to connect people and organizations to resolve conflict and crisis, foster volunteerism, and meet community needs.

SUICIDE PREVENTION & CRISIS SUPPORT

- Survivors of Suicide Support Group
- Crisis Helpline
- The Gatekeeper Program

GIVE HELP. GET HELP.

- 2-1-1
- Volunteer Services
 - Community Volunteer Center
 - Nonprofit Support & Training

CONFLICT RESOLUTION

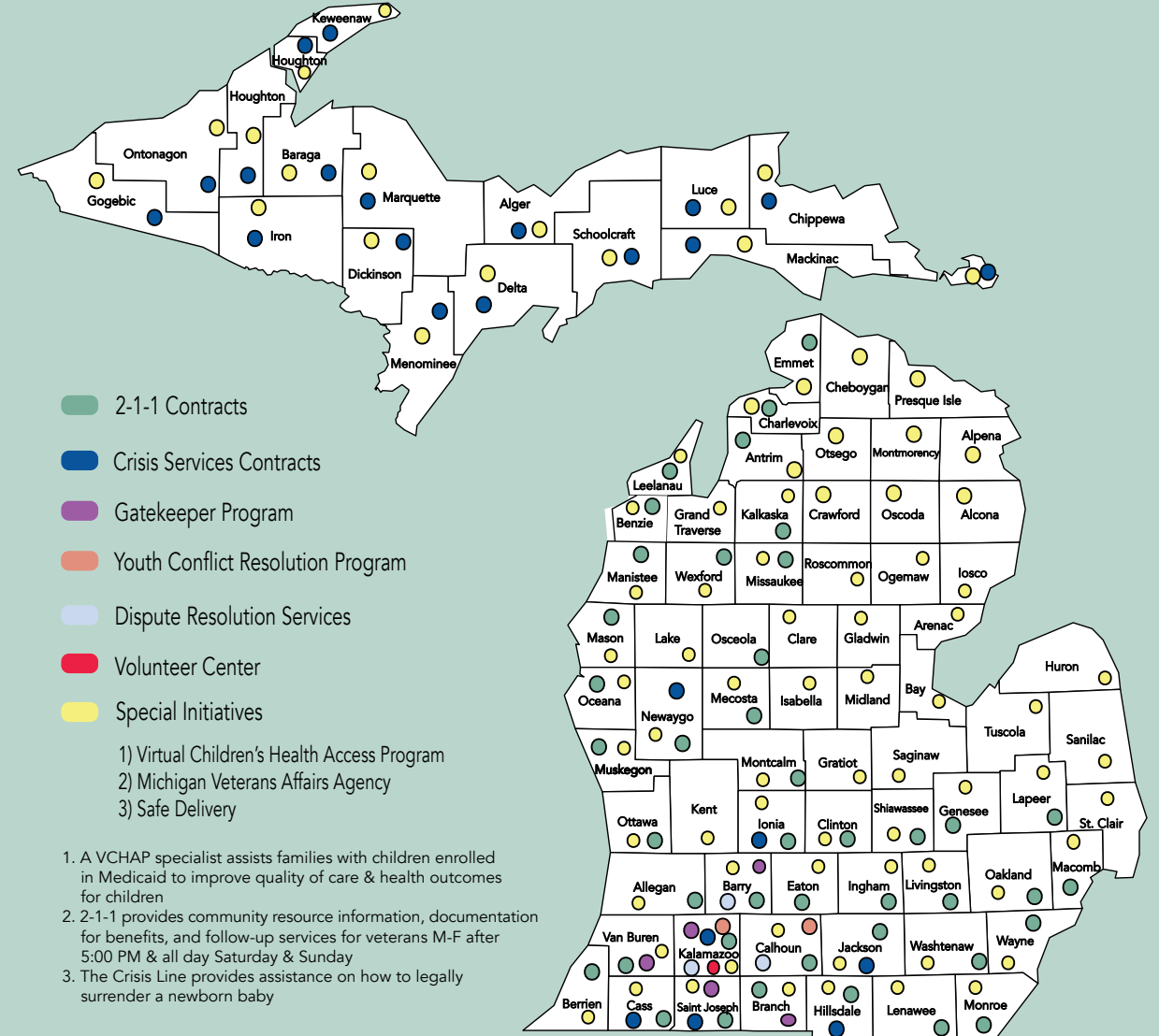
- Community Dispute Resolution Services
- Community Restorative Justice
- Youth Restorative Justice

COMMUNITY INITIATIVES

- Critical Incident Stress Management (CISM)
- Kalamazoo County Suicide Prevention Action Network (SPAN)



GRYPHON PLACE SERVICE AREA



LETTER FROM THE CEO

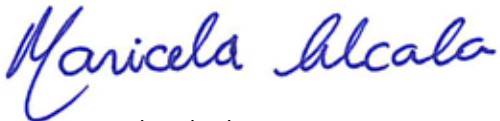
Looking back on the year, so many of us struggled and experienced difficult times. Gryphon Place is humbled to have touched the lives of so many when they reach out to us. We try our best to support and connect them to resources when they reach out to us, but we also know that sometimes that is not easy. We learned this past year through all of our programs the need for healing. Healing relationships, healing our mind and body. So many try to move forward, but simply can't without asking for help.

We need to heal to grow, to move forward, to accomplish and to be our best selves. We can't heal alone and most times we don't know how to heal or that we need to heal until we reach out. Gryphon Place has provided healing throughout our programs. From community members in crisis being greeted by a listening ear, or getting connected to services and resources that can change their situation to families finally finding peace in mediation. One small step can help guide someone to their path of healing.

We have been fortunate not to do this work alone. Our community is understanding and committed to supporting the work of healing.

Thank you for being part of our year.

Sincerely,



Maricela Alcala
Chief Executive Officer



Mission: Gryphon Place connects people and organizations to resolve conflict and crisis, foster volunteerism, and meet community needs.

GET HELP. DIAL 2-1-1.

2-1-1 INFORMATION & REFERRAL SERVICES

Dialing 2-1-1 is the first step to get connected to help. It's free, confidential and anonymous, and available 24 hours a day. Community resource advisors work with people to understand their needs, determine their options, and provide referrals to appropriate programs and services. A wide range of health and human services are available including food, housing, healthcare, support groups, utility assistance, childcare, and more.

Total Calls
73,082

Online Searches
6,956

24/7 Coverage
Counties
9

After-hours
Coverage Counties
32

Michigan Veterans
Affairs Agency Calls
866

Berrien & Cass
FoodLink Calls
2,683

Kalamazoo Eviction
Diversion Calls
308

Finding healing **connections** through
human **connections** 24 hours a day.

TOP TEN REFERRED AGENCIES FOR KALAMAZOO COUNTY

St. Vincent de Paul Society
Housing Resources
Christian Resource Center
Salvation Army
Michigan Department of Health and
Human Services
Saint Vincent de Paul Society – Saint
Catherine of Siena Church
Kalamazoo County Health and Community
Services
Kalamazoo Valley Community College
Kalamazoo Deacons Conference
Portage Community Center

TOP FIVE REFERRED SERVICES

Food Assistance
Electric Service Payment Assistance
Tax Preparation
Rent Assistance
Shelter

2-1-1 INFORMATION & REFERRAL PARTNERS:

Barry County United Way
CALL 2-1-1
Central Michigan 2-1-1
City of Portage
Cradle Kalamazoo
Goodwill Industries of Southwest
Michigan
Housing Resources
Michigan Association of United Ways
Michigan Veterans Affairs
2-1-1 Northeast Michigan
United Way of Southeast Michigan 2-1-1
United Way of Southwest Michigan 2-1-1
St. Joseph County United Way
The Calhoun County Tax Coalition
The Kalamazoo County Tax Coalition
United Way of Allegan County
United Way of the Battle Creek and
Kalamazoo Region
YWCA
Western Michigan University School of
Medicine



LIFE REQUIRES
ANSWERS.

DIAL 2-1-1
24 hours a day

TEXT 2-1-1
Text your zip code to 898-211

LIVE ONLINE CHAT
gryphon.org
4 PM – 10 PM

SEARCH ONLINE DATABASE
gryphon.org



Disaster Support

Support was provided to communities across the country during times of disaster in 2017 using our 2-1-1 call & text technology. When Hurricane Irma devastated the Miami area callers were seamlessly routed to Michigan 2-1-1 centers. Gryphon Place provided both service referrals & up-to-date disaster information as well as crisis support, and we took 806 of the 1,167 Miami calls directed to the Michigan network. Gryphon Place 2-1-1 also coordinated with United Way Worldwide to respond to Ventura County 2-1-1 texts when wildfires ravaged California.

806
Irma calls

The Volunteer Income Tax Assistance Program

The Volunteer Income Tax Assistance (VITA) program is an IRS program designed to help low and moderate-income taxpayers complete their annual tax returns at no cost. 2-1-1 provided information and scheduled appointments throughout the tax season, connecting thousands of families to opportunities to become financially stable through the Earned Income Tax Credit.

2,793 Appointments
Scheduled

4 Counties

26 Locations

Text 2-1-1 Launched 2017

Meeting people where they're at and making it easy to find what they need, we have a new way for people to get help 24/7/365. Text 2-1-1 works by simply texting your zip code to 898-211 to connect with a community resource advisor who can share resources and help connect to services.

GIVE HELP. DIAL 2-1-1.



**COMMUNITY
CONNECTION.**

Your Community Volunteer Center

We help individuals find volunteer opportunities & we help nonprofits find volunteers, while supporting and promoting volunteerism in the community through training, consultation, and award & recognition opportunities.

Volunteer Database

We provide a comprehensive database allowing people to browse for volunteer opportunities and for nonprofits to list volunteer opportunities online on our website. At grypnon.org/volunteer you can get all of your volunteer needs met in one place.

Volunteer Opportunities Dial 2-1-1

Volunteer opportunities can also be accessed by dialing 2-1-1 and talking to a community resource advisor.

The volunteer database
is home to
333
different agencies offering
volunteer opportunities with their
organizations, and is also home to
8,248
potential volunteers

STAR Awards

Volunteers give their time and energy to make their neighborhoods, schools, and communities better places to live. They give thousands of hours of service in support of local organizations each year. For 30 years, volunteers have been recognized at the STAR Awards ceremony (Sharing Time And Resources) as a way to celebrate and acknowledge these efforts. The celebration held in April of 2017 once again shined a spotlight on the volunteer force of the Kalamazoo area.

VOLUNTEER SERVICES

PARTNERS:

City of Kalamazoo
Dorothy U. Dalton Foundation
Irving S. Gilmore Foundation
Kalamazoo Community Foundation



SUICIDE PREVENTION & CRISIS SUPPORT

LIFE REQUIRES
SUPPORT.



Help-Line

The 24/7 crisis helpline that provides callers with immediate emotional support or crisis intervention, for any crisis situation from coping with stress to thoughts of suicide and anything in between. Trained crisis workers listen with compassion to those who need support. This line can also connect those who need ongoing support to follow-up mental health services when needed. We are American Association of Suicidology Accredited and a National Suicide Prevention Lifeline Affiliate.

Survivors of Suicide Loss

Facing a community needing additional resources for coping with suicide loss, we expanded services offered to suicide loss survivors. Those who have lost a loved one to suicide can learn about the services best suited for their needs and stage of grief that they are in by calling 269-381-HELP, including our Survivors of Suicide Loss Monthly Drop-In Support Group and our new 6 session/12 week Survivors of Suicide Loss Closed Support Group. Both groups are free to participants.

“Thank you for being there in my darkest moments.”

-Helpline caller

39,725

Total Crisis Calls

84

Emergency Rescues

9

Counties Served
24/7

22

Counties Served
After-hours

TOP THREE CALL CATEGORIES

Mental Health
Suicide
Substance Use

381-HELP CRISIS LINE PARTNERS

Bronson Battle Creek Sexual Assault Services
Copper County Community Mental Health
Gogebic Community Mental Health
Hiawatha Behavioral Health
Kalamazoo Community Mental Health and Substance Abuse Services
Lifeways Community Mental Health
National Suicide Prevention Lifeline
Newaygo Community Mental Health
Northcare Network
Northpointe Behavioral Health
Ozone House
Pathways Community Mental Health
Safe Delivery
St. Joseph Community Mental Health
The Right Door Community Mental Health
Windward Employee Solutions
Woodlands Behavioral Health
Portage Public Safety



LIFE CALLS FOR
AWARENESS.

The Gatekeeper Program

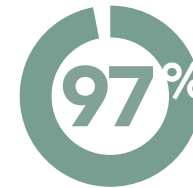
Our school based youth suicide prevention program provides middle and high school students with safe and appropriate lifesaving information, including positive coping skills and stress, mental health, how to recognize when a person is in crisis and what to do if someone is having thoughts of suicide. We also share local resources that are available to support them. This program was reviewed by the Suicide Prevention Resource Center and listed on the Best Practice Registry.

“This program is great because even though it seems like most people aren’t paying attention, you guys (Gryphon Place) are reaching out to those that need it and every life you save counts, even if it’s 1 in a 100.” *-High School Student*

AS A RESULT OF THIS PROGRAM



of students report being more open to seeking help for a friend who is suicidal and



of students are more open to seeking help for themselves if they are considering suicide.

12

School Districts

23

School Buildings

144

Classes

5

Counties

327

Students Referred

3,878

Students Taught

THE GATEKEEPER PROGRAM PARTNERS

Constantine Public Schools
Gull Lake Community Schools
Hackett Catholic Prep
Kalamazoo Public Schools
Lawton Community Schools
Mattawan Consolidated Schools
Portage Public Schools
Potterville Public Schools
Schoolcraft Community Schools
Union City Community Schools
White Pigeon Community Schools



HEALING REQUIRES CONNECTIONS.

Suicide Prevention Action Network (SPAN) Community Initiative

December 2017 marked one year of reinvigorated efforts in Kalamazoo County to unite around suicide prevention, coordinated by Gryphon Place. A community Steering Committee reviewed and updated Suicide Prevention Plan goals, began a suicide death review team to help identify prevention strategies, and advised that the next stage of work involved the formation of the SPAN Advisory Board. The board looks forward to a full SPAN community coalition launch in 2018.

Critical Incident Stress Management (CISM) Community Initiative

Gryphon Place serves as the front door for Community, First Responder, and School debriefing teams that respond and provide services to those who have been impacted by traumatic and stressful events. We work with community partners who provide an educational method that normalizes common stress reactions, processes what happened, and connects to appropriate follow up services. These teams provided CISM services nearly 100 times in 2017.



“We’ve seen so many people benefit from the CISM process. Healing can really begin here.”

- CISM coordinator

CRITICAL INCIDENT STRESS MANAGEMENT PARTNERS:

Calhoun Intermediate School District
Family & Children Services
Kalamazoo Community Mental Health and Substance Abuse Services
Michigan Crisis Response Association

CONFLICT RESOLUTION



LIFE CALLS FOR PEACEFUL SOLUTIONS.

251

Cases Referred

102

Cases Mediated

COMMUNITY DISPUTE RESOLUTION SERVICES PARTNERS

Michigan Special Education Mediation Program
Supreme Court Administration Office

Types of Mediated Disputes

Child Protection	Adult Victim Offender
Criminal	Divorce without children
Breach of Contract	Divorce with Children
Employment	Neighborhood
Guardianship-Adult/Child	Property
Landlord/Tenant	Real Estate

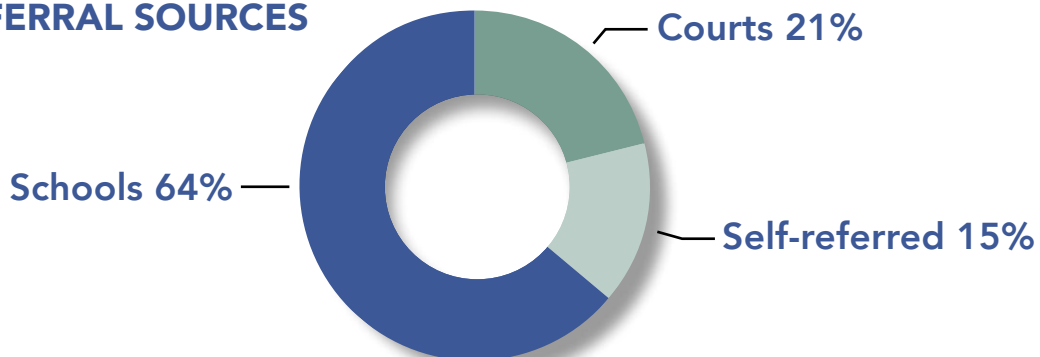
Top FIVE Dispute Types

Breach of Contract
Divorce
Landlord Tenant
Property
Domestic Matters

COMMUNITY DISPUTE RESOLUTION SERVICES (DRS)

Provides mediation services, a confidential way for people to resolve conflicts without going through the legal system and utilizing the help of a trained neutral third person. This affordable option uses an income based sliding fee scale.

CASE REFERRAL SOURCES



Truancy Mediation Pilot Program

A truancy mediation pilot program was launched in partnership with Kalamazoo Public Schools with the goal to decrease the amount of time students are out of school. By providing mediation services, we are able to support families to help ensure student success in school and to avoid truancy court processes.

Community Restorative Justice Program Launch

Restorative Practices such as Peace Circles, Circles of Understanding, Restorative Conferences, Family Group Conferences, and Victim-Offender Reconciliation are now available to anyone in the community. This means that workplaces, families, neighbors, and victims & offenders of crimes and any others who are in conflict can actively work toward healing relationships, resolving conflict, and preventing crime and wrongdoing.

CONFLICT RESOLUTION



FOSTER PEACEFUL RESOLUTIONS.

"I want to thank you for getting that circle together for us. It relieved so much pressure that I was feeling and helped me say what I needed to say. Because we did that, I don't want to fight anymore."

– Anonymous Student

YOUTH RESTORATIVE JUSTICE SCHOOL DISTRICTS

Battle Creek Public Schools
Kalamazoo Public Schools
Kalamazoo Regional Service Agency (KRESA)
Kazoo School
Vicksburg Community Schools

YOUTH RESTORATIVE JUSTICE

Peer Mediation

We coordinate and provide this youth driven program within the buildings of our local school district partners. Trained students work with peers to solve problems, using direct dialog to come to a peaceful solution.

Restorative Justice

Restorative Circles and Conferences are facilitated by our adult staff to address misconduct and violence in order to improve overall school climate for students and staff.

New Law Leads to Launch of Suspension Diversion Program

The Michigan Restorative Justice Law passed in 2016, requiring public school districts to consider more effective alternatives to suspension/expulsion of students. With partner Kalamazoo Public Schools, Gryphon Place launched a suspension diversion program utilizing Restorative Practices to give students pathways to authentic accountability, heal damaged relationships, and repair harm done to their communities.

YOUTH RESTORATIVE JUSTICE

145

Cases Referred

116

Cases Mediated

80%

Agreement Rate

PEER MEDIATION

176

Cases Referred

163

Cases Mediated

93%

Agreement Rate



GRYPHON PLACE SUICIDE PREVENTION MONTH | SEPT 2017

We believe that suicide prevention is everyone's business, and every year we are reminded that so many of our community members agree. You walked, sponsored, donated, attended trainings, listened to our youth tell their stories, reached out to someone in need of support, and reached out for help — and we thank you.

We know that Kalamazoo is a community who cares. Suicide Prevention Month is only one month, but together we can continue to spread **hope, help, and healing** throughout the year.



Our annual EAT DRINK GIVE event brought out hundreds of guests last February to enjoy food, drinks, music, and fun. Gryphon Place supporters enjoyed a memorable evening together where giving back never tasted so good.

Creating meaningful
RELATIONSHIPS
that make
a difference.

Dedicated volunteers gave
3,071
hours last year and it would not
be possible to help so many people
find hope without them.

Gryphon Place was present at
69
outreach events, helping to
increase access to services and get
people connected to help and hope.