

UTS-1



Office:12F-5,No238,Jinhua N.Rd.,North
District,Taichng City,Taiwan 404
Tel:886-4-2235-0522
Fax:886-4-2235-4797
E-Mail:salse@summitco.com.tw
Website:www.summitco.com.tw

目錄

1. UTS-1 Specification	3
2. Software Operation Procedures	4
3. Simple Trouble-Shooting:	10

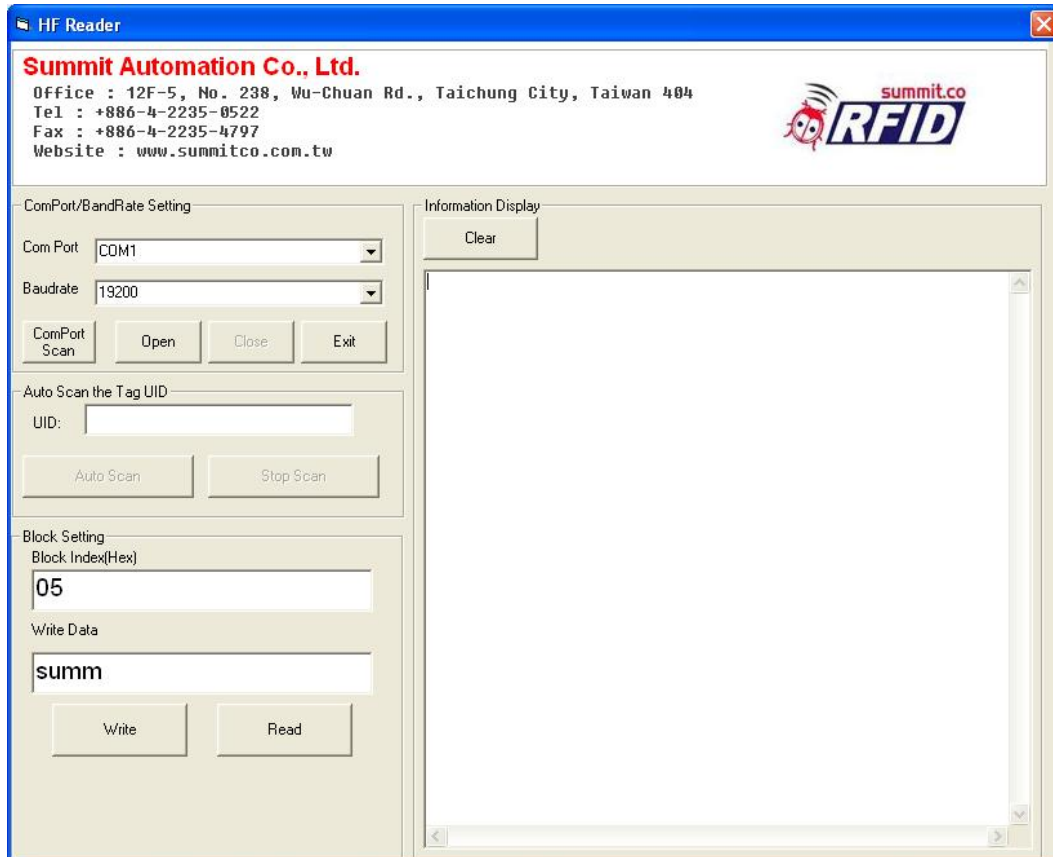
1. UTS-1 Specification



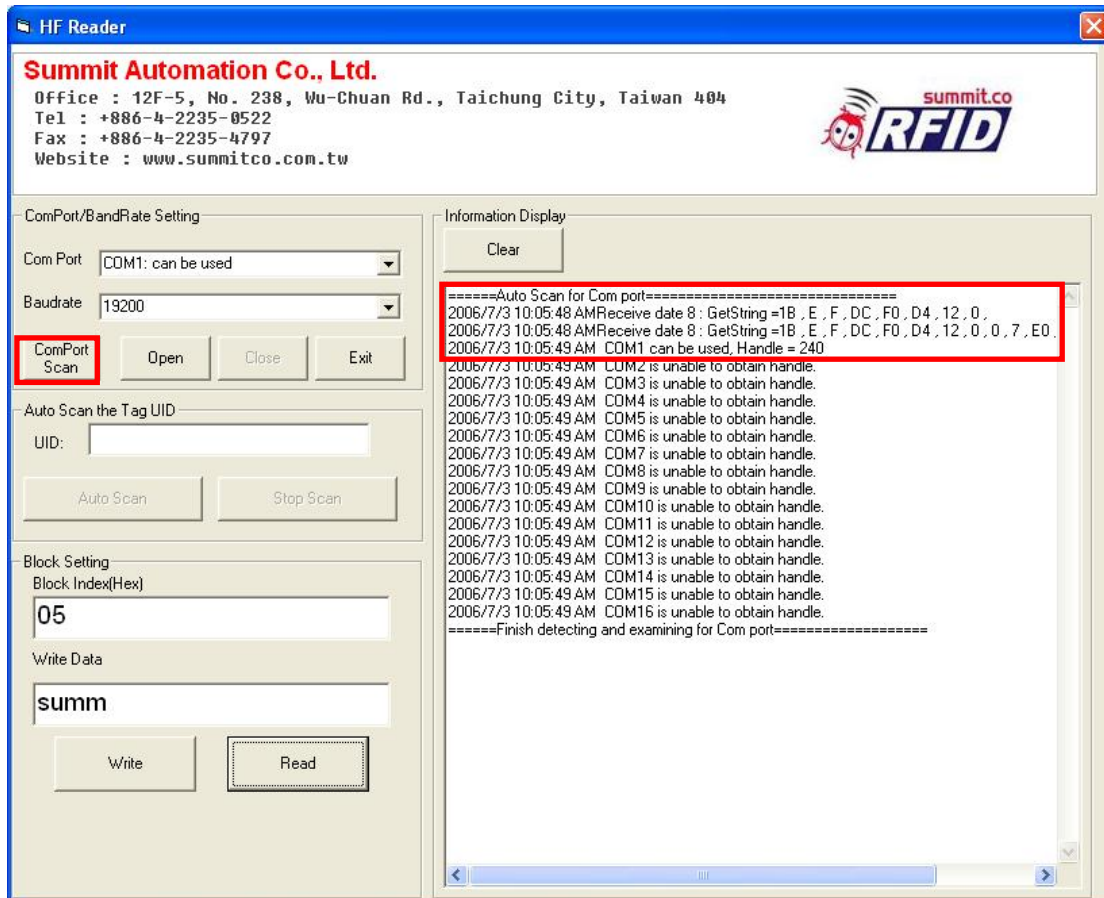
Product Name	SUMMIT UTS-1
Description	UTS-1 is designed to Read/Write ISO 15693,13.56MHz TI- HiTag, also I-Code 2 Tags(R/O).It can also offer the PC security control, log in control and fits the RFID applications.
Features	Frequency:13.56 MHz R/W ISO 15693 ;TI HITAG/ ICODE2 standard ISO cards. High speed data transmission, High volume data integration, Data bit comparison.
Specifications	Compliant to AC906 RF frequency: 13.56MHz RF reading distance: Up to 10cm(Tag dependent) USB interface Chip: ISO 15693 HITAG ICODE Dimensions : 11.5cm(L)*5.5cm(W)*3.5cm(H) Material : ABS Weight : 200g Operating Temperature : -10 to 60 Deg C Operating Humidity : 10 ~ 90%
Applications	<ul style="list-style-type: none"> * PC entrance control * System log-in management * PC system/security control * Attendance history data record

2. Software Operation Procedures

Setp 1 : choose start->All Programs->Summitco->UTS-1



Setp 2 : choose ComPort Scan



HF Reader

Summit Automation Co., Ltd.
 Office : 12F-5, No. 238, Wu-Chuan Rd., Taichung City, Taiwan 404
 Tel : +886-4-2235-0522
 Fax : +886-4-2235-4797
 Website : www.summitco.com.tw

ComPort/BandRate Setting
 Com Port: COM1: can be used
 Baudrate: 19200

Information Display

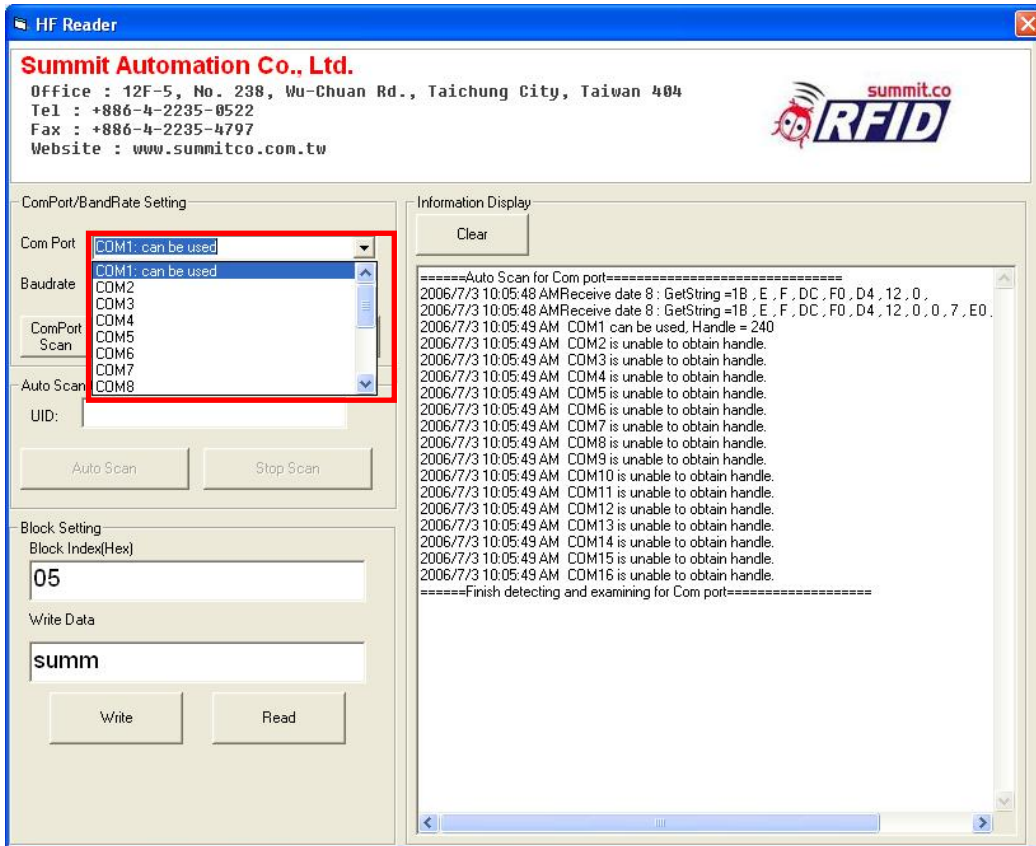
 =====Auto Scan for Com port=====
 2006/7/3 10:05:48 AM Receive date 8 : GetString =1B , E , F , DC , F0 , D4 , 12 , 0 .
 2006/7/3 10:05:48 AM Receive date 8 : GetString =1B , E , F , DC , F0 , D4 , 12 , 0 , 7 , E0 .
 2006/7/3 10:05:49 AM COM1 can be used, Handle = 240
 2006/7/3 10:05:49 AM COM2 is unable to obtain handle.
 2006/7/3 10:05:49 AM COM3 is unable to obtain handle.
 2006/7/3 10:05:49 AM COM4 is unable to obtain handle.
 2006/7/3 10:05:49 AM COM5 is unable to obtain handle.
 2006/7/3 10:05:49 AM COM6 is unable to obtain handle.
 2006/7/3 10:05:49 AM COM7 is unable to obtain handle.
 2006/7/3 10:05:49 AM COM8 is unable to obtain handle.
 2006/7/3 10:05:49 AM COM9 is unable to obtain handle.
 2006/7/3 10:05:49 AM COM10 is unable to obtain handle.
 2006/7/3 10:05:49 AM COM11 is unable to obtain handle.
 2006/7/3 10:05:49 AM COM12 is unable to obtain handle.
 2006/7/3 10:05:49 AM COM13 is unable to obtain handle.
 2006/7/3 10:05:49 AM COM14 is unable to obtain handle.
 2006/7/3 10:05:49 AM COM15 is unable to obtain handle.
 2006/7/3 10:05:49 AM COM16 is unable to obtain handle.
 =====Finish detecting and examining for Com port=====

Auto Scan the Tag UID
 UID:

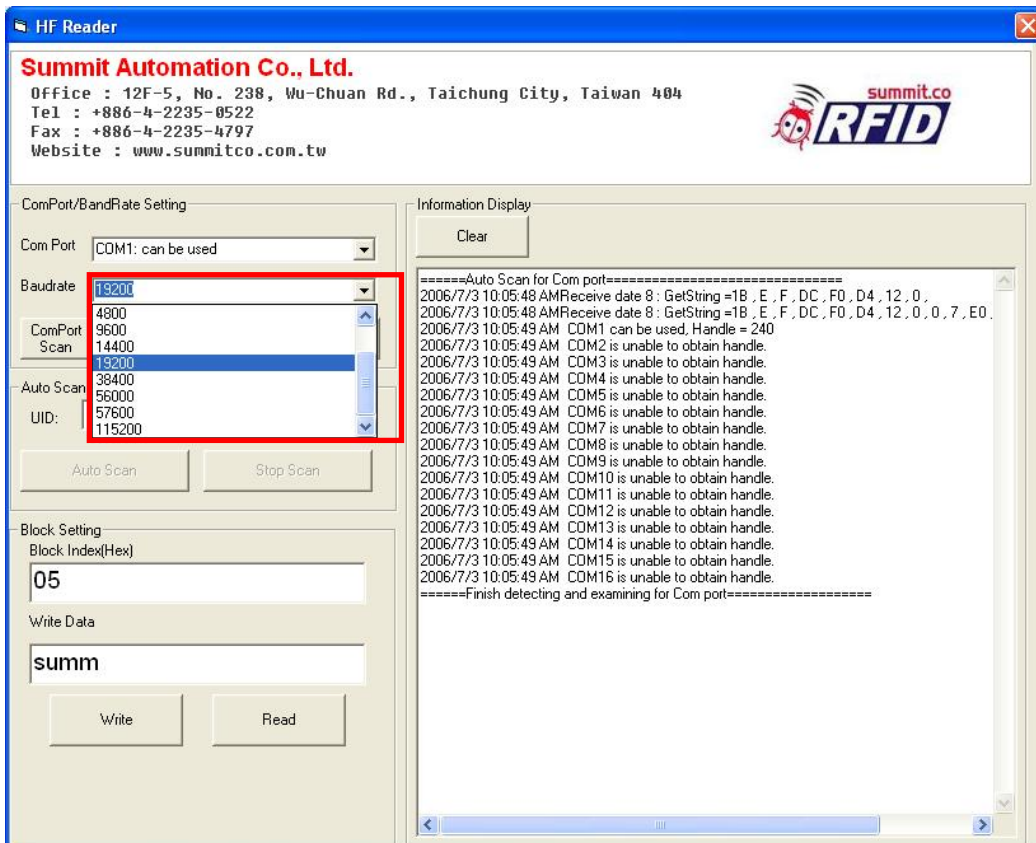
Block Setting
 Block Index(Hex)

 Write Data

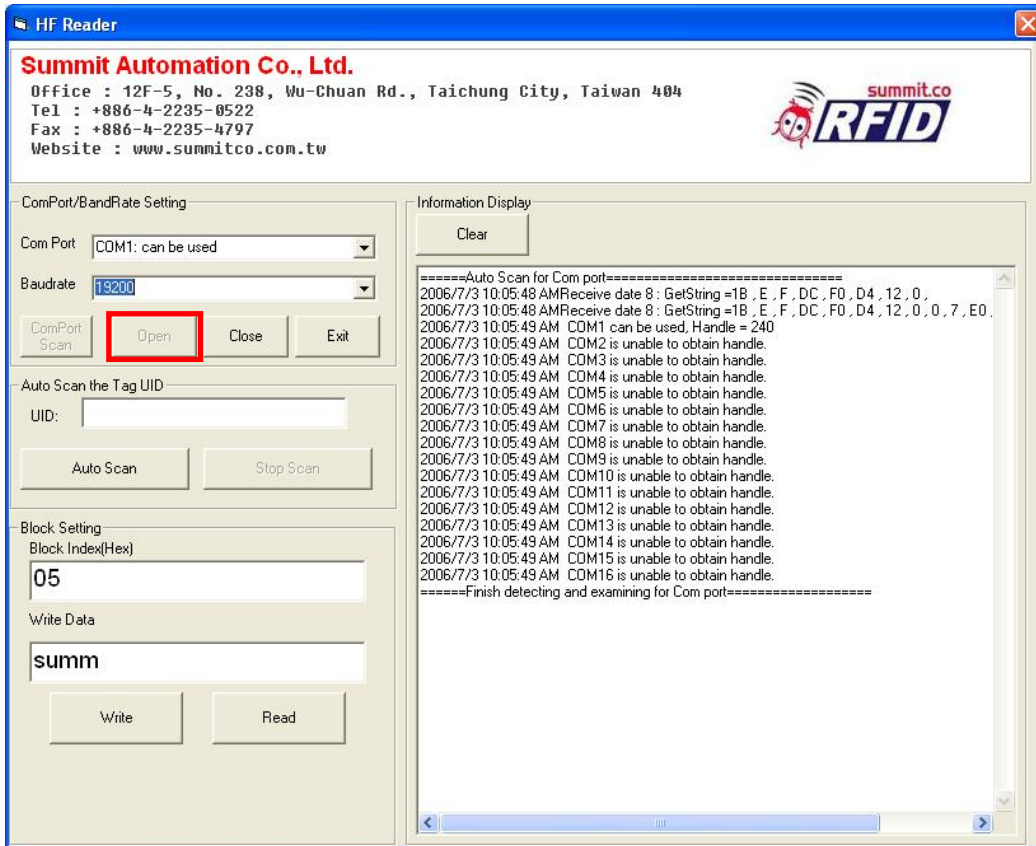
Setp 3 : Setting Com Port ◦



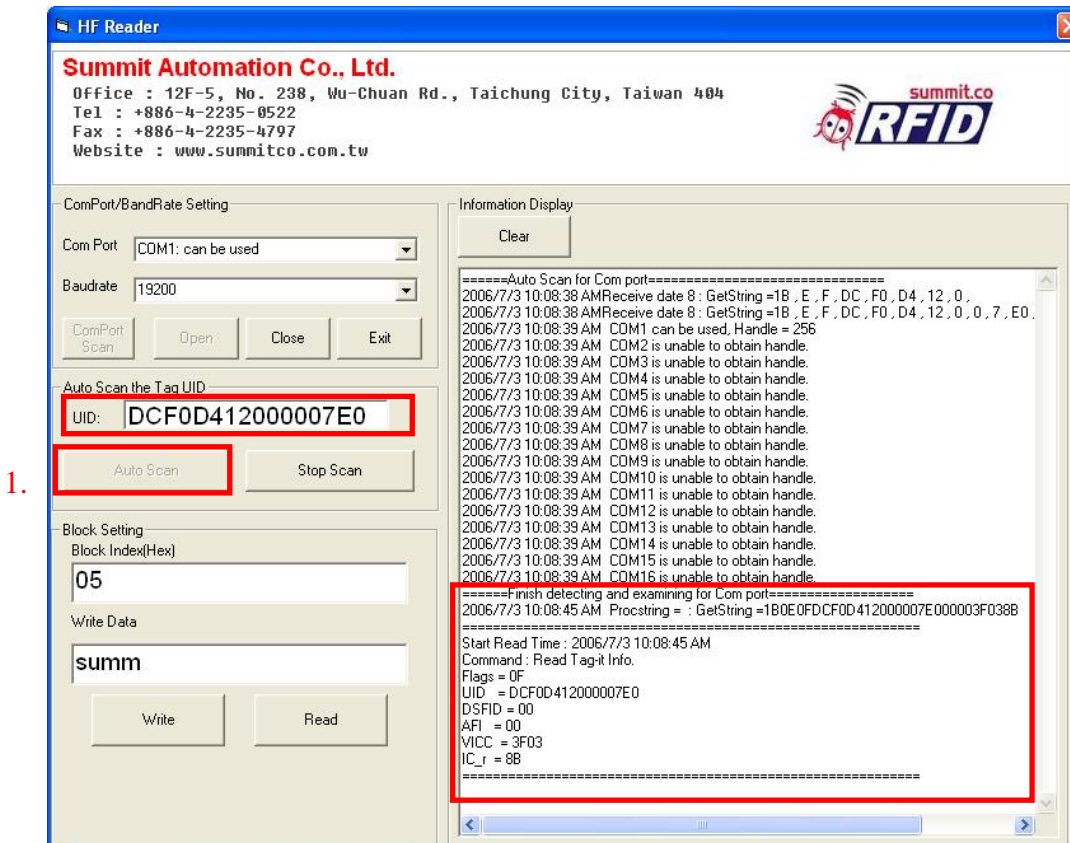
Setp 4 : Setting Baud Rate ◦



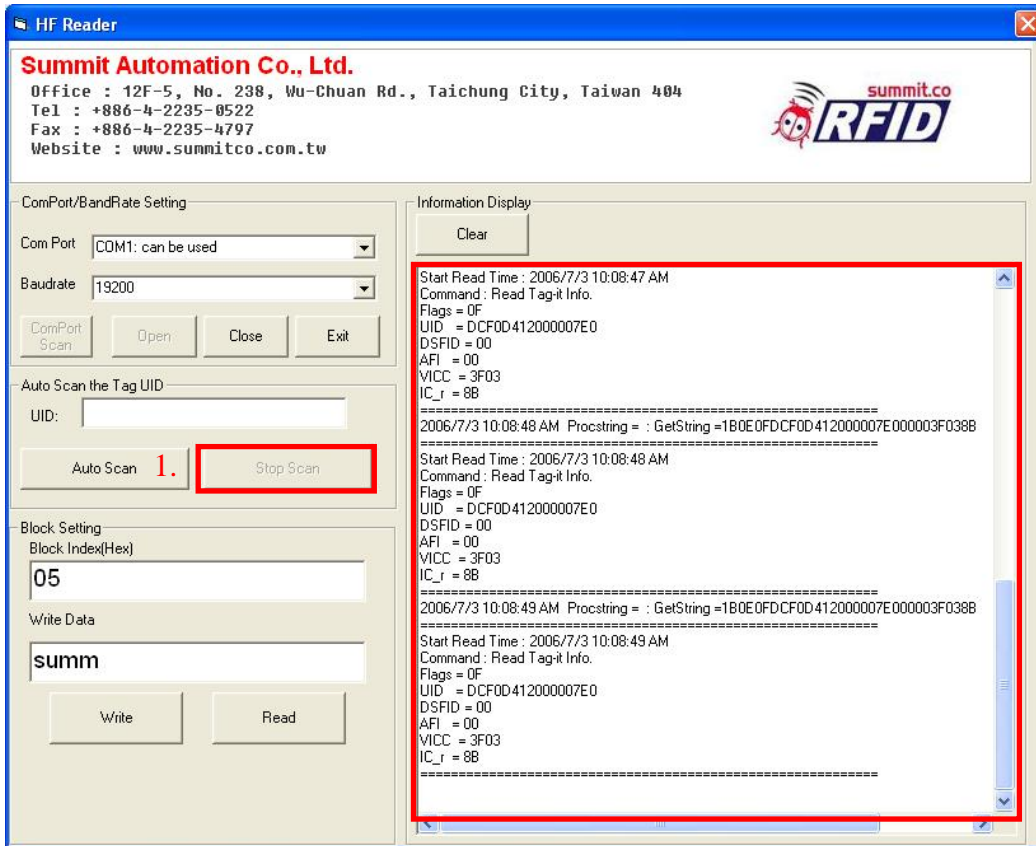
Setp 5 : Open Com Port ◦



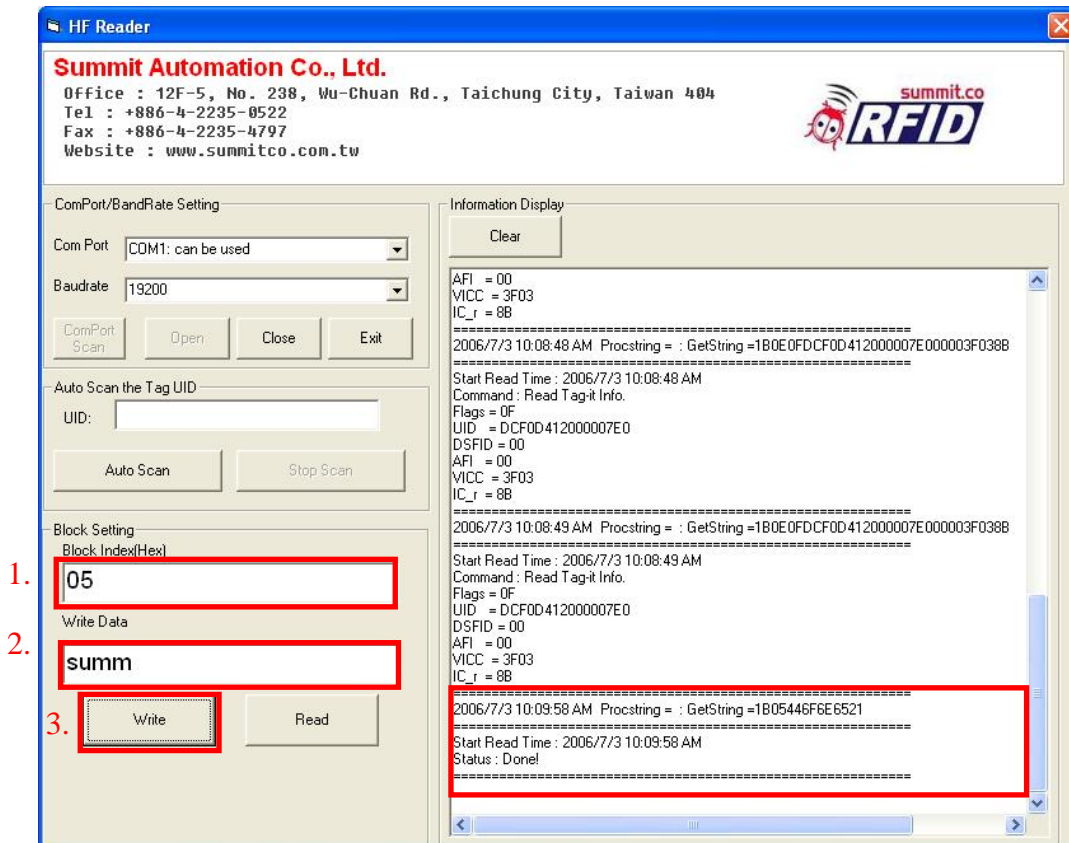
Setp 6 : choose Auto Scan ◦



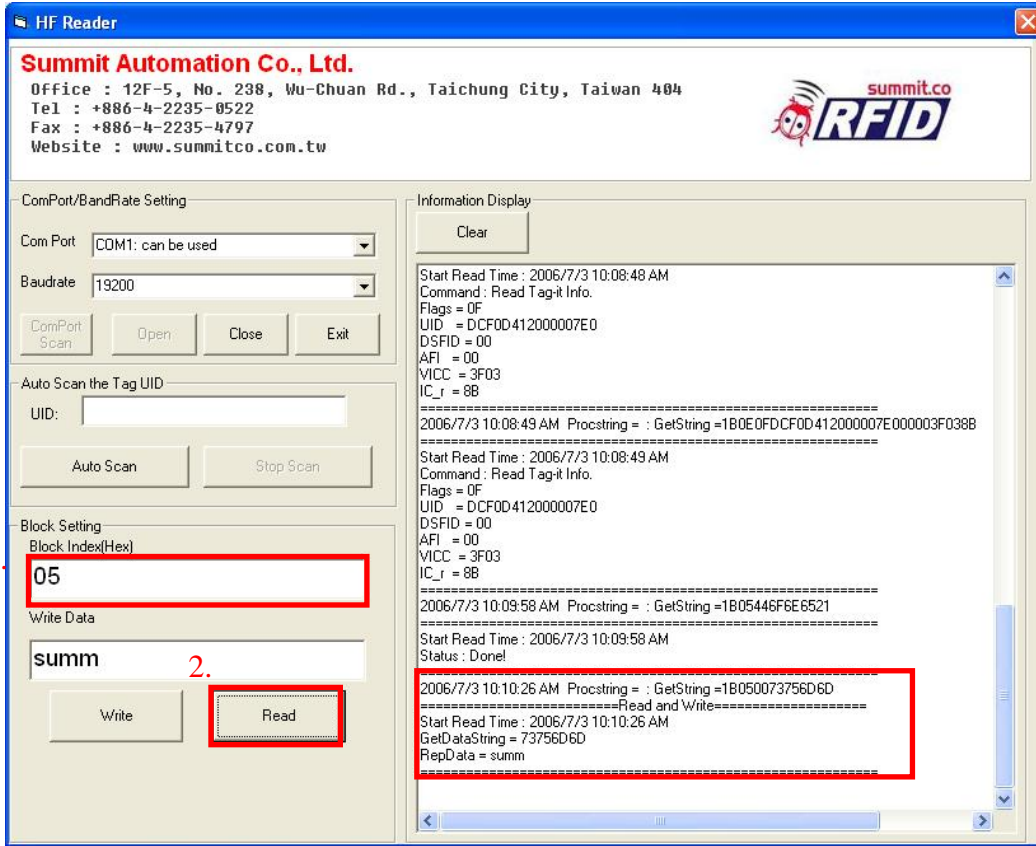
Setp 7 : choose Stop Scan ◦



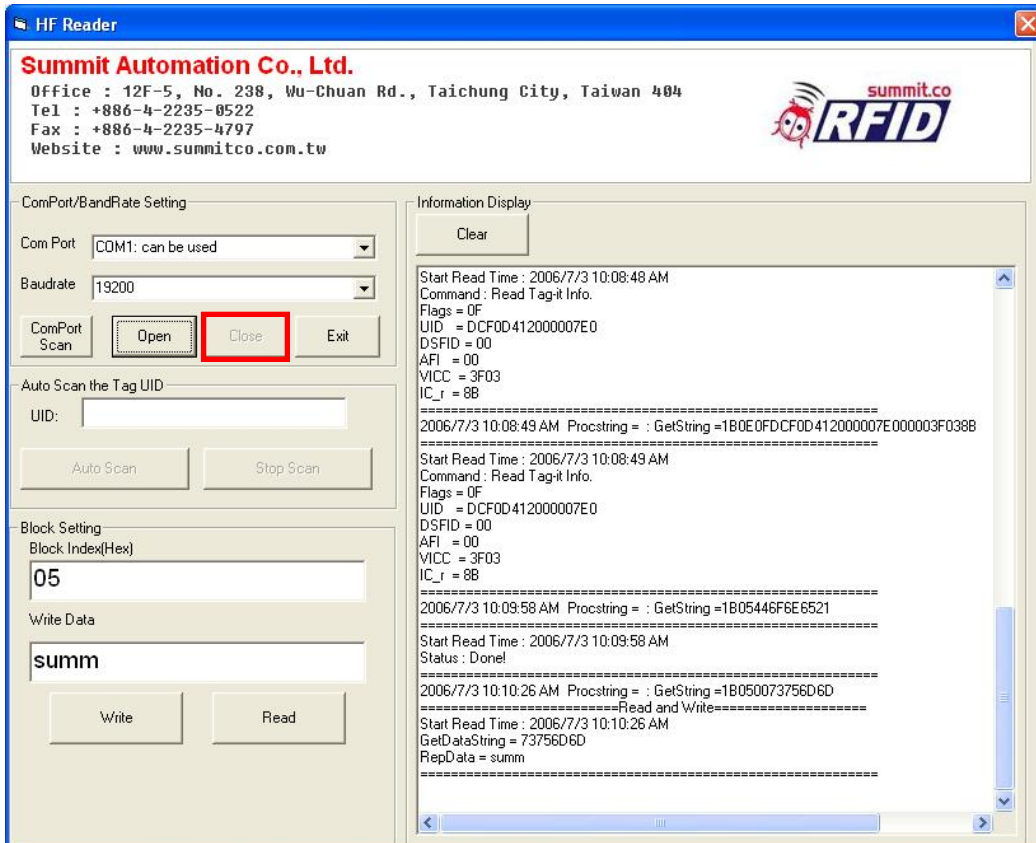
Setp 8 : Writing the block value(4 Words)



Setp 9 : Reading the block value



Setp 10 : Close Com Port ◦



3. Simple Trouble-Shooting:

(1) Can not open the Com Port:

Please check and reconfigure the Com Port as needed.

(2) No data shows up when executing:

Please check and make sure the cables are connected properly.

(3) Not able to Read / or Write:

Please assure the Tag is placed with in the readable distance range.