

AERODROME
CHART - ICAO

AD ELEV 1017'

15°57'33"S
5°38'45"W

ST HELENA TWR 118.2
APP 119.5

ST HELENA
ST HELENA AIRPORT

ELEV, ALT & HGT IN FEET
DIST IN METERS

S15°57'00

S15°57'00

S15°57'30

S15°58'00

LEGEND	
	RADIO NAVIGATION ANTENNA
	ANEMOMETER MAST
	WIND DIRECTION INDICATOR
	MAST
	DVOR AND DME
	LOCALIZER
	SHORE LINE

ARP
LATITUDE: 15°57'33"S
LONGITUDE: 5°38'45"W

DVOR

HF

CLEARWAY
925m X 150m

CLEARWAY
790m X 150m

RESA

LOCALIZER

THRESHOLD 20

PAPI

PAPI

TOUCHDOWN ZONE

GBAS

MAST

TOUCHDOWN ZONE

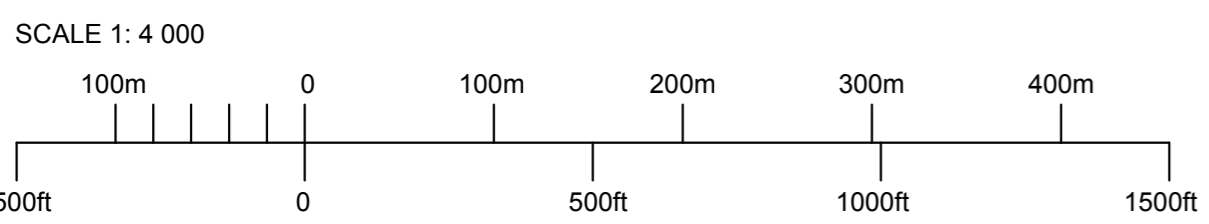
PAPI

THRESHOLD 02

RESA

1950 x 45m CONCRETE RUNWAY

AMENDMENTS	
DATE	DESCRIPTION
28-04-2016	FIRST RELEASE
05-01-2017	SECOND RELEASE
30-03-2017	PAGE NUMBER AND FREQUENCY
20-07-2017	NDB DECOMMISSIONED



RWY LIGHTING					
RWY	ALS	PAPI	RTHL	REDL	RENL
20	NPA, White, 300m, with SFL	3°	Green	White / Yellow	Red
02	NPA, White, 210m, with SFL	3°	Green	White / Yellow	Red

RWY	DIRECTION	THR COORDINATES	THR ELEVATION	TORA (m)	TODA (m)	ASDA (m)	LDA (m)	SWY (m)	CWY (m)	SLOPE	SURFACE	BEARING STRENGTH
20	179 (°T) 196 (MAG)	15°57'07.34"S 5°38'45.97"W	309m	1850	2775	1850	1550	0	925	0.317% D	CONCRETE	52/R/B/W/T
02	359 (°T) 16 (MAG)	15°57'57.76"S 5°38'44.79"W	304m	1635	2425	1635	1535	0	790	0.317% U	CONCRETE	52/R/B/W/T

AIRCRAFT PARKING CHART
APRON - ICAO

AD ELEV 1017'

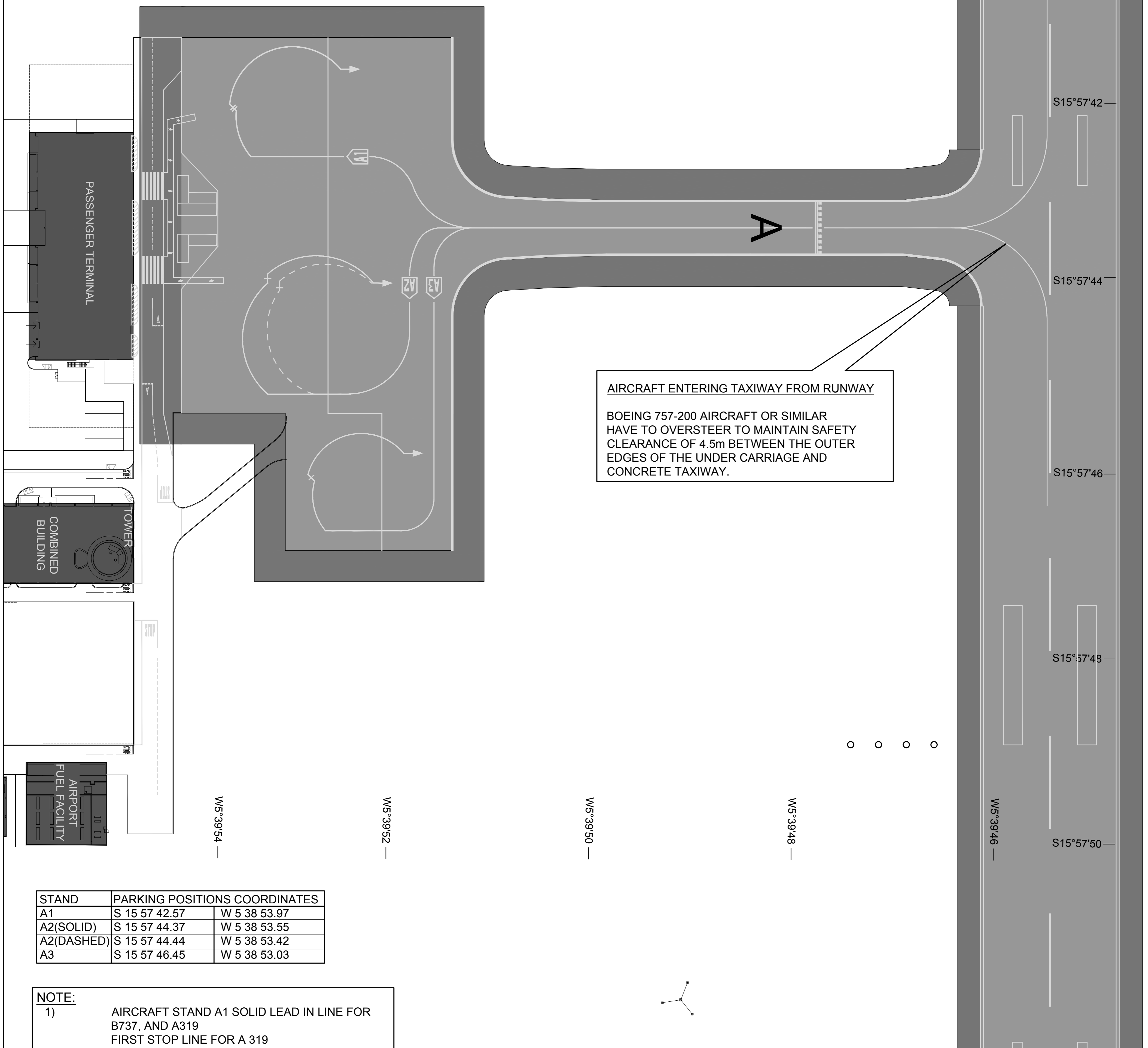
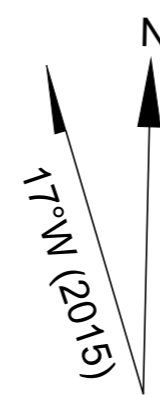
15°57'33"S
5°38'45"W

ST HELENA TWR 118.2
APP 119.5

ST HELENA
ST HELENA AIRPORT

AMENDMENTS

DATE	DESCRIPTION
28-04-2016	FIRST RELEASE
01-04-2016	SECOND RELEASE
26-05-2016	THIRD RELEASE
30-03-2017	PAGE NUMBER AND FREQUENCY

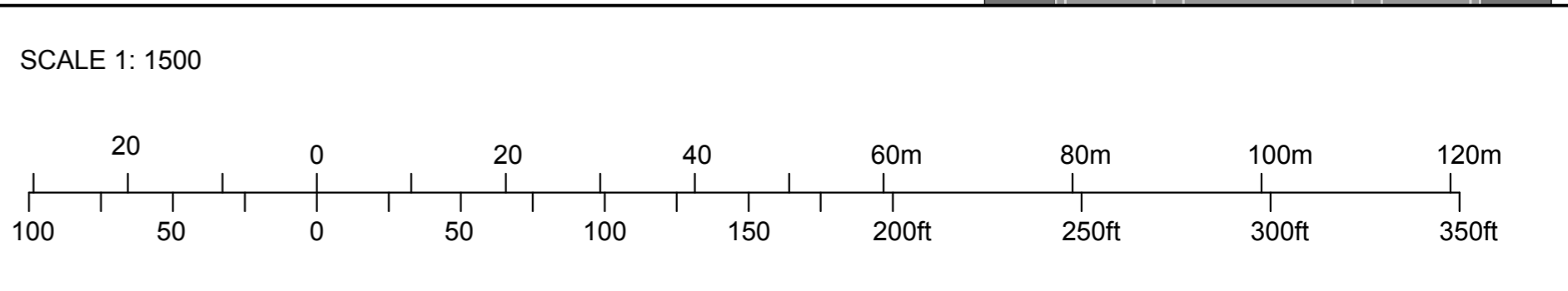


AIRCRAFT ENTERING TAXIWAY FROM RUNWAY
BOEING 757-200 AIRCRAFT OR SIMILAR
HAVE TO OVERSTEER TO MAINTAIN SAFETY
CLEARANCE OF 4.5m BETWEEN THE OUTER
EDGES OF THE UNDER CARRIAGE AND
CONCRETE TAXIWAY.

STAND	PARKING POSITIONS COORDINATES	
A1	S 15 57 42.57	W 5 38 53.97
A2(SOLID)	S 15 57 44.37	W 5 38 53.55
A2(DASHED)	S 15 57 44.44	W 5 38 53.42
A3	S 15 57 46.45	W 5 38 53.03

NOTE:

- 1) AIRCRAFT STAND A1 SOLID LEAD IN LINE FOR B737, AND A319
FIRST STOP LINE FOR A 319
SECOND STOP LINE FOR 737
- 2) AIRCRAFT STAND A2 SOLID LEAD IN LINE FOR B737, B757 AND A319
- 3) AIRCRAFT STAND A2 DASHED LEAD IN LINE FOR LOCKHEED L100 C130 ONLY.
- 4) AIRCRAFT STAND A3 SOLID LEAD IN LINE FOR B TYPE AIRCRAFT ONLY.



**AERODROME OBSTACLE CHART - ICAO
TYPE A (OPERATING LIMITATIONS)**

AD ELEV 1017'

15°57'33"S
5°38'45"W

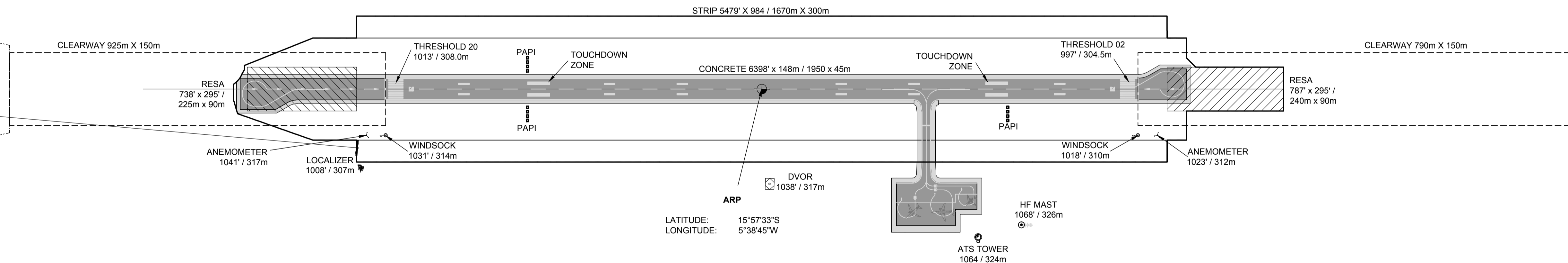
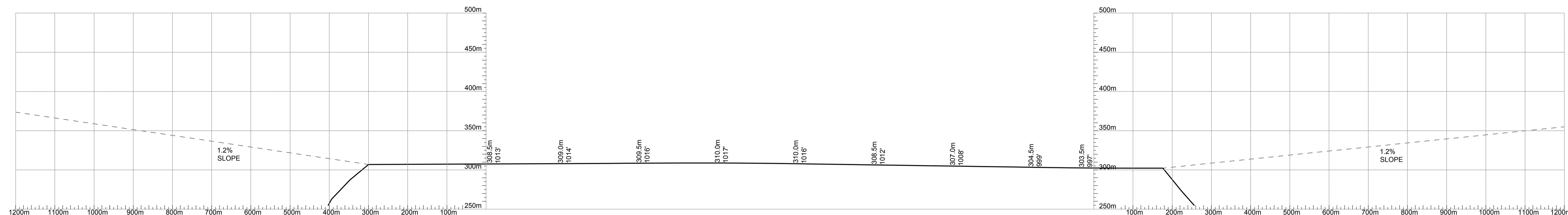
ST HELENA TWR 118.2
APP 119.5

ST HELENA
ST HELENA AIRPORT

DISTANCE IN FEET (') OR METERS (m) AS INDICATED;
ELEVATIONS IN FEET
MAGNETIC VARIATION 17°W (2015)

RUNWAY 20-02

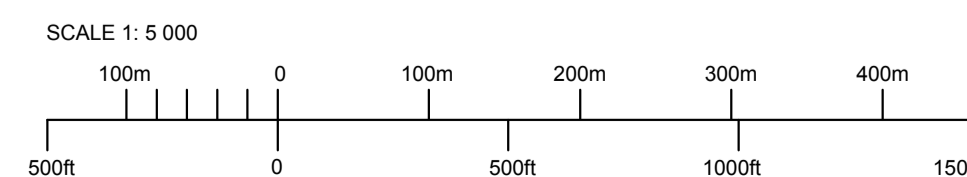
DECLARED DISTANCES		
RUNWAY 20		RUNWAY 02
6069' / 1850m	TAKE-OFF RUN AVAILABLE	5364' / 1635m
9104' / 2775m	TAKE-OFF DISTANCE AVAILABLE	7956' / 2425m
6069' / 1850m	ACCELERATE STOP DISTANCE AVAILABLE	5364' / 1635m
5085' / 1550m	LANDING DISTANCE AVAILABLE	5036' / 1535m



LATITUDE: 15°57'33"S
LONGITUDE: 5°38'45"W

AMENDMENTS	
DATE	DESCRIPTION
28-04-2016	FIRST RELEASE
30-03-2017	PAGE NUMBER AND FREQUENCY
20-07-2017	NDB DECOMMISSIONED

VHF
1270' / 390m



LEGEND	
	RADIO NAVIGATION ANTENNA
	ANEMOMETER MAST
	WIND DIRECTION INDICATOR
	MAST
	DVOR AND DME
	LOCALIZER

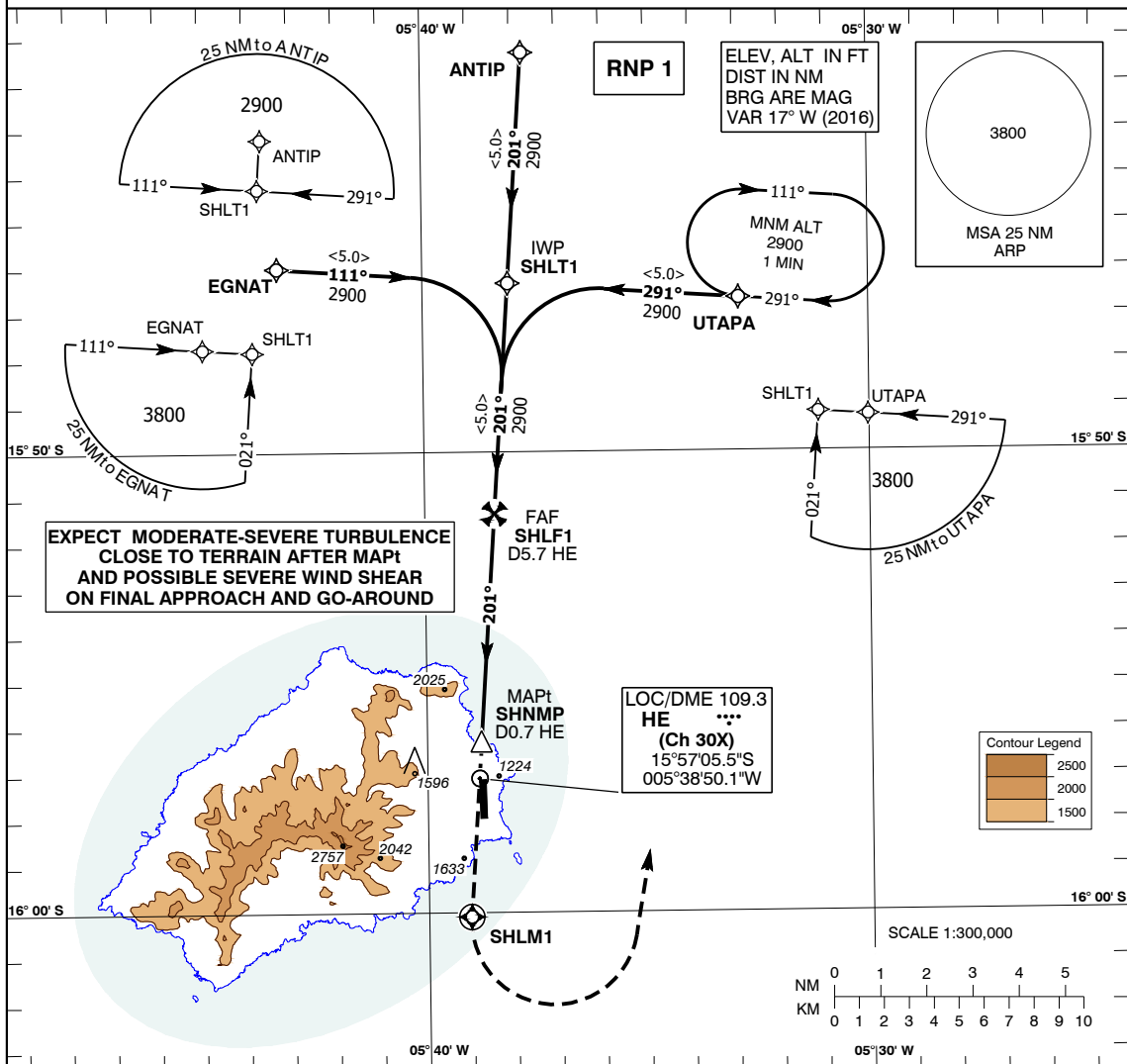
**INSTRUMENT
APPROACH
CHART - ICAO**

AERODROME ELEV **1017FT**
HEIGHT RELATED TO
THR RWY 20 - ELEV **1013FT**

TWR 118.2
APP 119.5

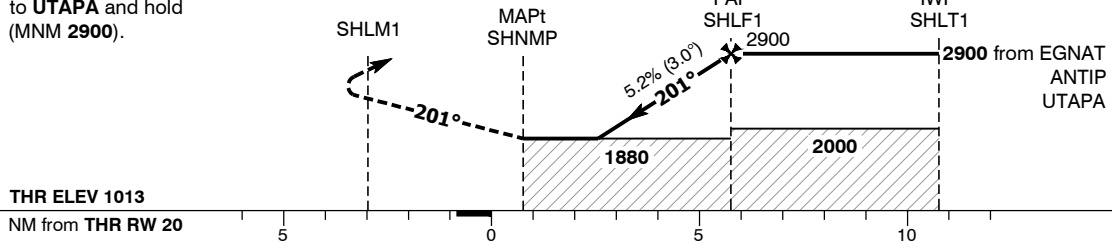
SAINT HELENA (FHSH)

Saint Helena Airport
RNAV LOC/DME RWY 20
CAT A, B, C



MISSED APPROACH:
Climb straight ahead to **SHLM1**.
At **SHLM1** turn left direct
to **UTAPA** and hold
(MNM 2900).

TRANSITION ALT **6000**



Aircraft Category		A	B	C	Recommended profile (Gradient 5.2%, 320 FT/NM)						
OCA (OCH)	Procedure	1880 (867)	1880 (867)	1880 (867)	Distance from THR	3	4	5			
					ALT / HGT	2030 (1017)	2340 (1327)	2660 (1647)			
VM (C) OCA (OCH)	Total Area	Not Authorised			Rate of descent	G/S KT	80	100	120	140	160
	East side of RWY 02/20	1880 (863)				FT/MIN	430	530	640	740	850

- NOTES:**
- Limited localiser coverage to 18° right of centreline.
 - Hold may partially be conducted outside of Controlled Airspace.
 - Final Approach offset by 5°.

CHANGE: Page Number, Frequency

INSTRUMENT APPROACH DATA TABULATION	SAINT HELENA Saint Helena Airport RNAV LOC/DME RWY 20
--	--

02.03.2017 Datum: WGS84 Magnetic variation: 17.06° W (WMM 01 January 2016)

Procedure Designator	Navigation Performance	Path Terminator	WPT Name	Latitude (N) / Longitude (W)	Fly-By / Fly-Over	Distance (NM)	True / Magnetic Track	Lower Limit / Upper Limit	Speed Limit (KTS)	VPA	TCH (ft)	Turn Direction	Remark
RNAV LOC 20	RNP 1	IF	EGNAT	15°46'00.5"S / 005°43'15.6"W	Fly-By	-	-	3800 ft	-	-	-	-	-
RNAV LOC 20	RNP 1	TF	SHLT1	15°46'20.7"S / 005°38'05.2"W	Fly-By	5.0	093.9° / 111°	-	-	-	-	-	-
RNAV LOC 20	RNP 1	TF	SHLF1	15°51'21.2"S / 005°38'26.1"W	Fly-By	5.0	183.9° / 201°	-	-	-	-	R	-
RNAV LOC 20	Conventional	-	SHNMP	15°56'21.8"S / 005°38'47.0"W	-	5.0	183.9° / 201°	-	-	-	-	-	Intercept Localiser course
RNAV LOC 20	Conventional	-	SHLM1	16°00'06.0"S / 005°39'02.6"W	Fly-Over	3.7	183.9° / 201°	-	-	-	-	-	-
RNAV LOC 20	RNP 1	DF	UTAPA	15°46'40.9"S / 005°32'54.8"W	Fly-By	-	-	-	-	-	-	L	-

Hold Identification

Holding Fix	Latitude (N) / Longitude (W)	Inbound True Track / Magnetic Track	Speed Limit (KTS)	Lower Limit / Upper Limit	Time / Distance	Turn Direction
UTAPA	15°46'40.9"S / 005°32'54.8"W	273.8° / 291°	-	2900 ft	1 min	R

Procedure Designator	Navigation Performance	Path Terminator	WPT Name	Latitude (N) / Longitude (W)	Fly-By / Fly-Over	Distance (NM)	True / Magnetic Track	Lower Limit / Upper Limit	Speed Limit (KTS)	VPA	TCH (ft)	Turn Direction	Remark
RNAV LOC 20	RNP 1	IF	ANTIP	15°41'20.1"S / 005°37'44.3W	Fly-By	-	-	2900 ft	-	-	-	-	-
RNAV LOC 20	RNP 1	TF	SHLT1	15°46'20.7"S / 005°38'05.2"W	Fly-By	5.0	183.9° / 201°	-	-	-	-	-	-
RNAV LOC 20	RNP 1	TF	SHLF1	15°51'21.2"S / 005°38'26.1"W	Fly-By	5.0	183.9° / 201°	-	-	-	-	-	-
RNAV LOC 20	Conventional	-	SHNMP	15°56'21.8"S / 005°38'47.0"W	-	5.0	183.9° / 201°	-	-	-	-	-	Intercept Localiser course
RNAV LOC 20	Conventional	-	SHLM1	16°00'06.0"S / 005°39'02.6"W	Fly-Over	3.7	183.9° / 201°	-	-	-	-	-	-
RNAV LOC 20	RNP 1	DF	UTAPA	15°46'40.9"S / 005°32'54.8"W	Fly-By	-	-	-	-	-	-	L	-

Hold Identification

Holding Fix	Latitude (N) / Longitude (W)	Inbound True Track / Magnetic Track	Speed Limit (KTS)	Lower Limit / Upper Limit	Time / Distance	Turn Direction
UTAPA	15°46'40.9"S / 005°32'54.8"W	273.8° / 291°	-	2900 ft	1 min	R

Procedure Designator	Navigation Performance	Path Terminator	WPT Name	Latitude (N) / Longitude (W)	Fly-By / Fly-Over	Distance (NM)	True / Magnetic Track	Lower Limit / Upper Limit	Speed Limit (KTS)	VPA	TCH (ft)	Turn Direction	Remark
RNAV LOC 20	RNP 1	IF	UTAPA	15°46'40.9"S / 005°32'54.8"W	Fly-By	-	-	3800 ft	-	-	-	-	-
RNAV LOC 20	RNP 1	TF	SHLT1	15°46'20.7"S / 005°38'05.2"W	Fly-By	5.0	273.9° / 291°	-	-	-	-	-	-
RNAV LOC 20	RNP 1	TF	SHLF1	15°51'21.2"S / 005°38'26.1"W	Fly-By	5.0	183.9° / 201°	-	-	-	-	L	-
RNAV LOC 20	Conventional	-	SHNMP	15°56'21.8"S / 005°38'47.0"W	-	5.0	183.9° / 201°	-	-	-	-	-	Intercept Localiser course
RNAV LOC 20	Conventional	-	SHLM1	16°00'06.0"S / 005°39'02.6"W	Fly-Over	3.7	183.9° / 201°	-	-	-	-	-	-
RNAV LOC 20	RNP 1	DF	UTAPA	15°46'40.9"S / 005°32'54.8"W	Fly-By	-	-	-	-	-	-	L	-

Hold Identification

Holding Fix	Latitude (N) / Longitude (W)	Inbound True Track / Magnetic Track	Speed Limit (KTS)	Lower Limit / Upper Limit	Time / Distance	Turn Direction
UTAPA	15°46'40.9"S / 005°32'54.8"W	273.8° / 291°	-	2900 ft	1 min	R

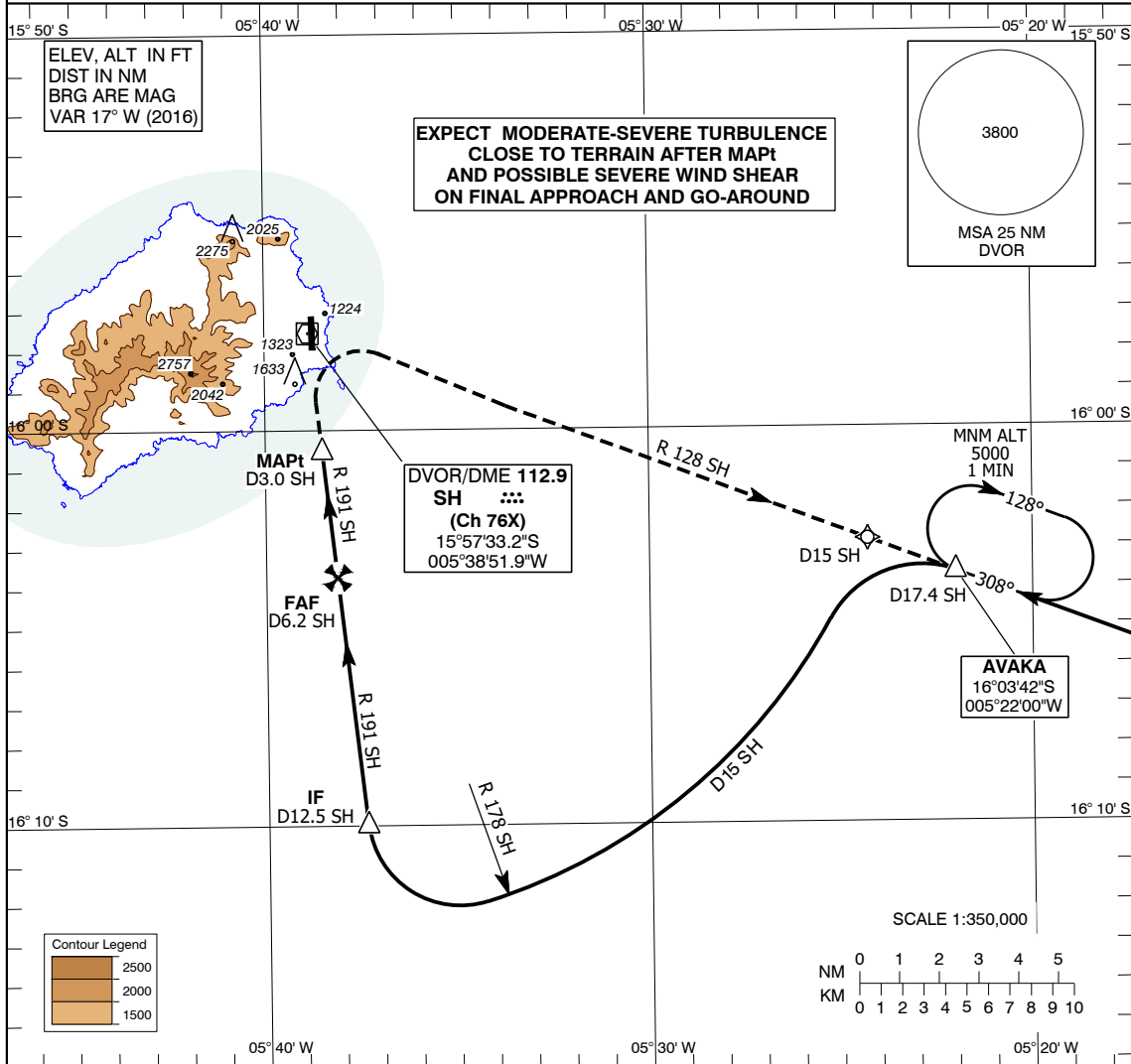
**INSTRUMENT
APPROACH
CHART - ICAO**

AERODROME ELEV **1017FT**
HEIGHT RELATED TO
THR RWY 02 - ELEV **997FT**

TWR 118.2
APP 119.5

SAINT HELENA (FHSH)

Saint Helena Airport
VOR/DME RWY 02
CAT A, B, C



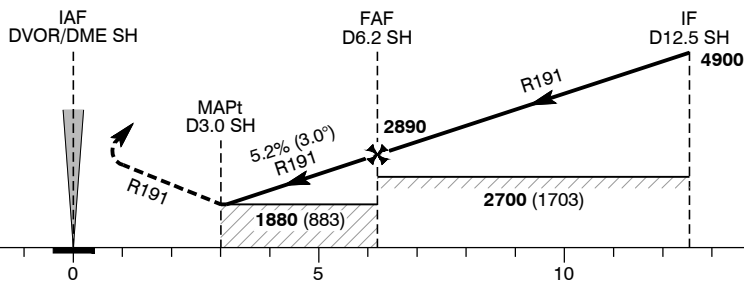
MISSED APPROACH:

Climb straight ahead on **R191 DVOR SH** and at **2100** turn right to track outbound on **R128 DVOR SH** climbing to **5000**. At **D17.4 SH** enter the hold.

TRANSITION ALT **6000**

THR ELEV 997

DME SH reads 0.4NM at THR02



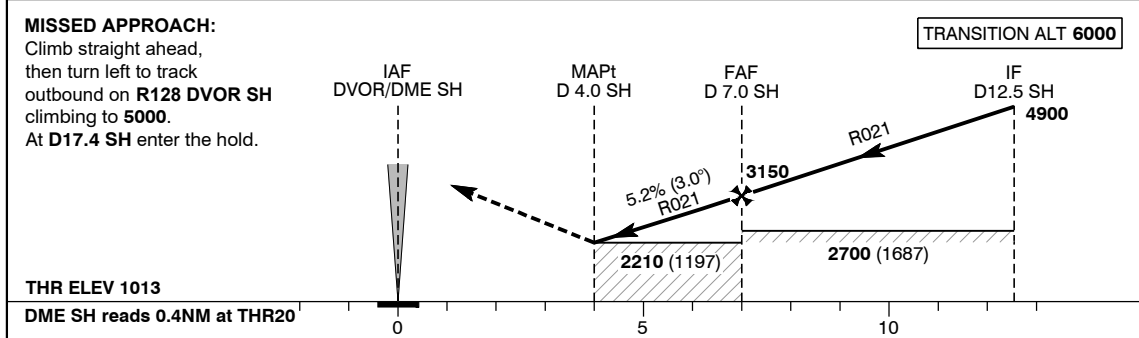
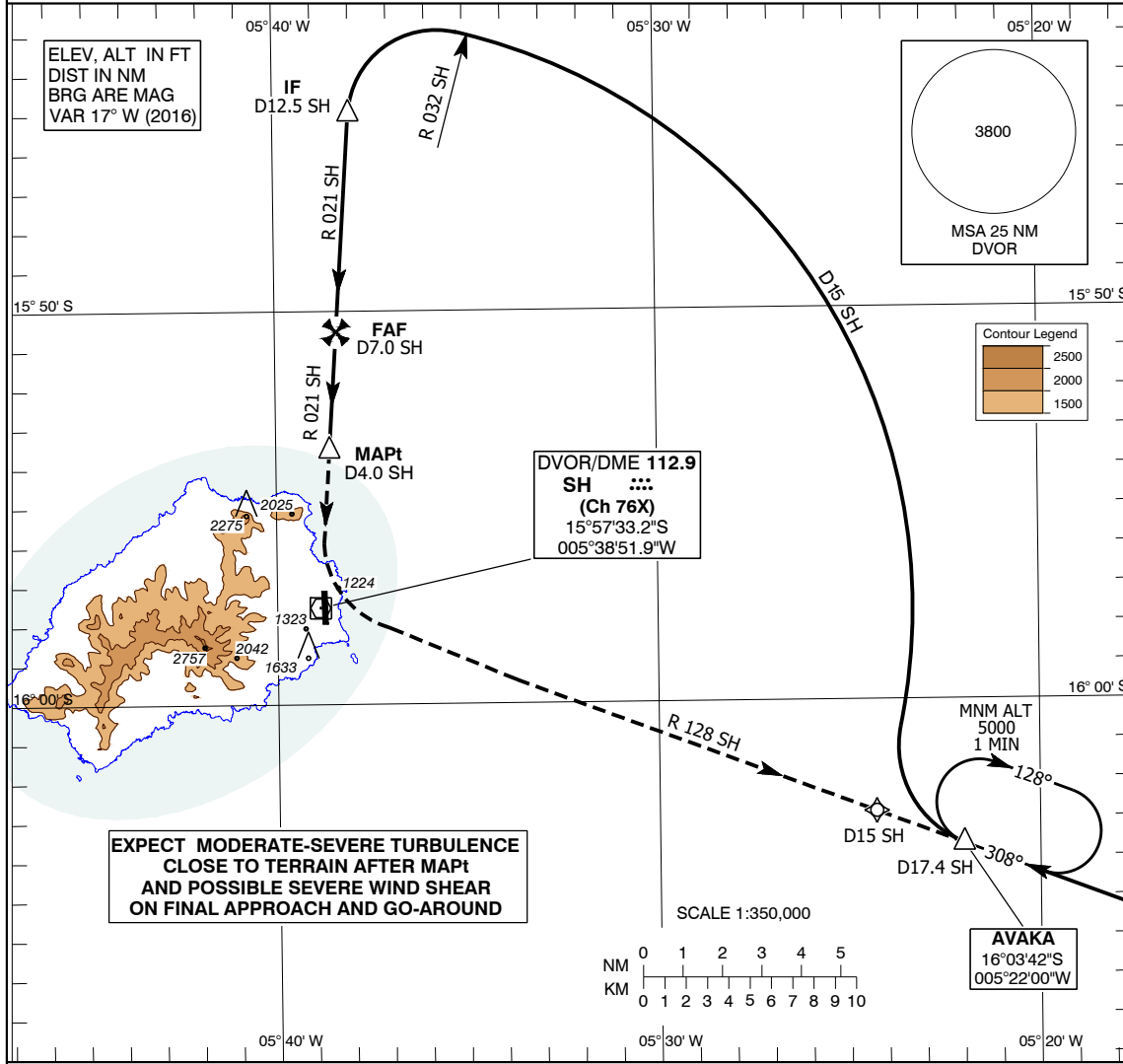
Aircraft Category	A	B	C	Recommended profile (Gradient 5.2%, 320 FT/NM)					
				Position DME SH	4	5	6		
OCA (OCH)	1880 (883)			ALT / HGT	2190 (1193)	2505 (1508)	2825 (1828)		
				Rate of descent	G/S KT	80	100	120	140
VM (C) OCA (OCH)	1880 (863)			FT/MIN	430	530	640	740	850

- NOTES:**
- VM(C) prohibited on West side of RWY 02/20.
 - Final Approach offset by 5°.
 - If CDI exceeds 1/2 FSD on R191 SH between IF and MAPt immediately follow missed approach procedure.

CHANGE: Page Number, Frequency

INSTRUMENT APPROACH DATA TABULATION			SAINT HELENA FHSB			
			Saint Helena Airport VOR/DME RWY 02			
02.03.2017		Datum:WGS84				
Descent Angle:	Fix	Fix Coordinates	Fix Formation Bearing °T/M	Fix Formation Distances		
3.00°	IAF (AVAKA)	160341.61S 0052200.23W	110.67/128 SH	D17.4 SH		
	IF	160959.84S 0053724.49W	173.54/191 SH	D12.5 SH		
	FAF	160344.17S 0053808.49W	173.54/191 SH	D6.2 SH		
	MAPt	160032.80S 0053830.90W	173.54/191 SH	D3.0 SH		
	DVOR SH	155733.21S 0053851.92W	-	-		
Hold Identification						
<i>Holding Fix</i>	<i>Latitude (S) / Longitude (W)</i>	<i>Inbound True Track/Magnetic Track</i>	<i>Maximum Indicated Airspeed (kts)</i>	<i>Minimum Holding Altitude (ft)</i>	<i>Timing (min)</i>	<i>Direction of Turn</i>
IAF (D7.8 CON) - AVAKA	160341.61/ 0052200.23	290.6°/308°	240	5000	1	R

INSTRUMENT APPROACH CHART - ICAO	AERODROME ELEV 1017FT HEIGHT RELATED TO THR RWY 20 - ELEV 1013FT	TWR 118.2 APP 119.5	SAINT HELENA (FHSH) Saint Helena Airport VOR/DME RWY 20 CAT A, B, C
---	--	------------------------	--



Aircraft Category	A	B	C	Recommended profile (Gradient 5.2%, 320 FT/NM)					
				Position DME SH	5	6	7		
OCA (OCH)	2210 (1197)			ALT / HGT	2515 (1502)	2835 (1822)	3150 (2137)		
				Rate of descent	G/S KT	80	100	120	140
VM (C)	2210 (1193)			FT/MIN	430	530	640	740	850

NOTES:

- VM(C) prohibited on West side of RWY 02/20.
- Final Approach offset by 5°.
- If CDI exceeds 1/2 FSD on R021 SH between IF and MAPt immediately follow missed approach procedure.

CHANGE: Page Number, Frequency

**INSTRUMENT APPROACH
DATA
TABULATION**

SAINT HELENA FHSH
Saint Helena Airport
VOR/DME RWY 20

02.03.2017

Datum:WGS84

Descent Angle:	Fix	Fix Coordinates	Fix Formation Bearing °T/M	Fix Formation Distances
3.00°	IAF (AVAKA)	160341.61S 0052200.23W	110.67/128 SH	D17.4 SH
	IF	154458.76S 0053800.30"W	003.79/021 SH	D12.5 SH
	FAF	155032.80S 0053823.13W	003.79/021 SH	D7.0 SH
	MAPt	155333.06S 0053835.47W	003.79/021 SH	D4.0 SH
	DVOR SH	155733.21S 0053851.92W	-	-

Hold Identification

<i>Holding Fix</i>	<i>Latitude (S / Longitude (W)</i>	<i>Inbound True Track/Magnetic Track</i>	<i>Maximum Indicated Airspeed (kts)</i>	<i>Minimum Holding Altitude (ft)</i>	<i>Timing (min)</i>	<i>Direction of Turn</i>
IAF (D7.8 CON) - AVAKA	160341.61/ 0052200.23	290.6°/308°	240	5000	1	R

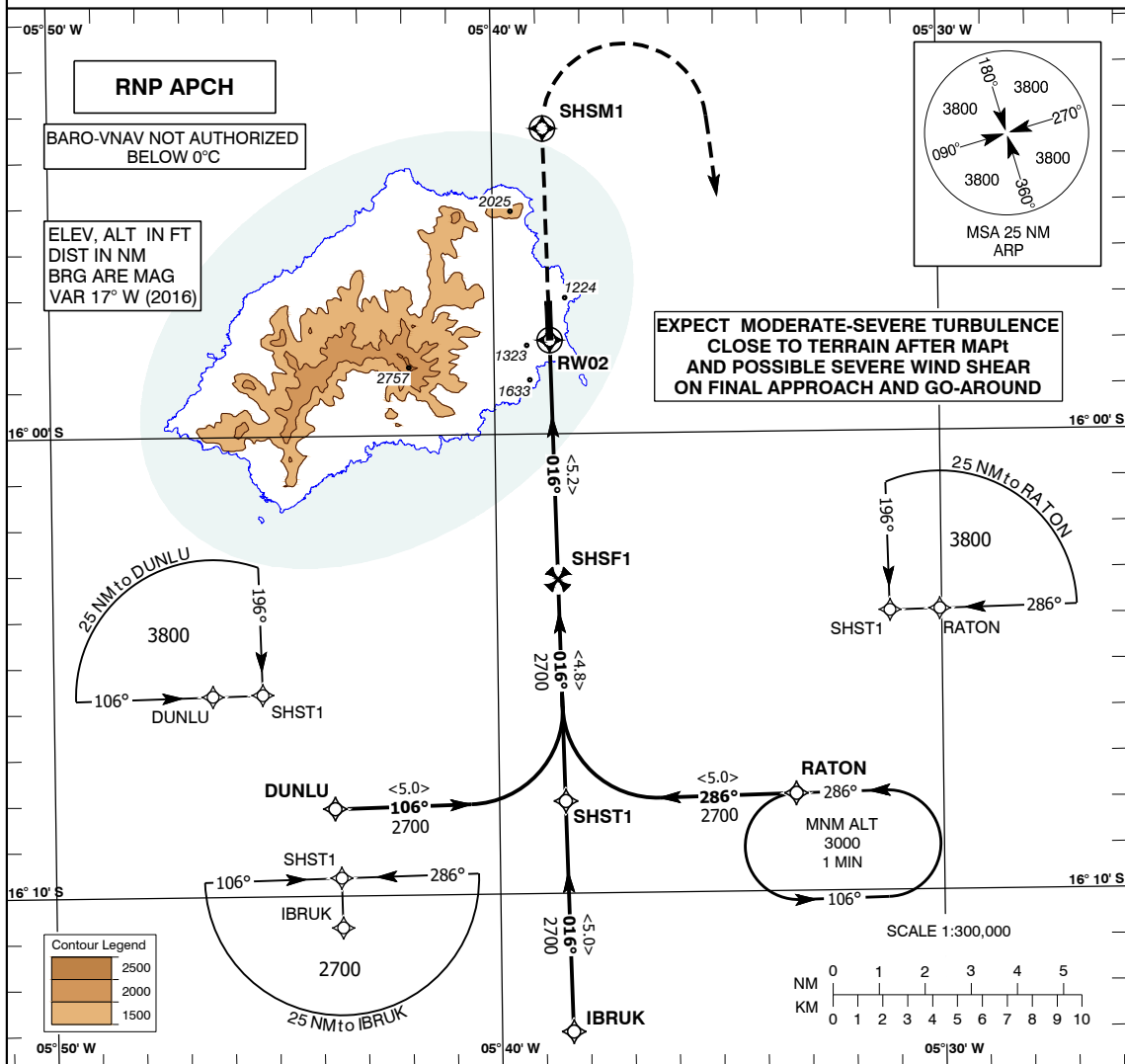
**INSTRUMENT
APPROACH
CHART - ICAO**

AERODROME ELEV **1017FT**
HEIGHT RELATED TO
THR RWY 02 - ELEV **997FT**

TWR 118.2
APP 119.5

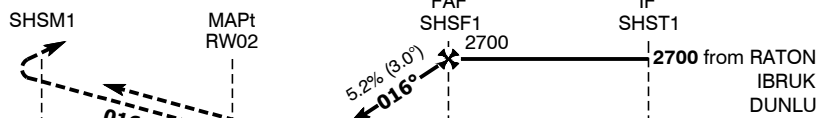
SAINT HELENA (FHSH)

Saint Helena Airport
RNP RWY 02
CAT A, B, C



MISSED APPROACH:
Climb straight ahead to **SHSM1**.
At **SHSM1** turn right direct to **RATON** and hold.
Climb to **4000**.

TRANSITION ALT **6000**



RDH **50**

THR ELEV **997**

NM from THR RWY 02

Aircraft Category		A	B	C	Recommended profile (Gradient 5.2%, 320 FT/NM)						
OCA (OCH)	LNAV/VNAV	1770 (773)	1780 (783)	1790 (793)	Distance from THR	3	4	5			
	LNAV	1880 (883)	1880 (883)	1880 (883)	ALT / HGT	2000 (1003)	2320 (1323)	2640 (1643)			
VM (C)		1880 (863)			Rate of descent	G/S KT	80	100	120	140	160
OCA (OCH)						FT/MIN	430	530	640	740	850

NOTES: 1. VM(C) prohibited on West side of RWY 02/20.

CHANGE: Revised Significant points, Frequency

INSTRUMENT APPROACH DATA TABULATION	SAINT HELENA Saint Helena Airport RNP RWY 02
--	---

02.03.2017 Datum: WGS84 Magnetic variation: 17.06° W (WMM 01 January 2016)

Procedure Designator	Navigation Performance	Path Terminator	WPT Name	Latitude (N) / Longitude (W)	Fly-By / Fly-Over	Distance (NM)	True / Magnetic Track	Lower Limit / Upper Limit	Speed Limit (KTS)	VPA	TCH (ft)	Turn Direction	Remark
RNP 02	RNP APCH	IF	RATON	16°07'53.2"S / 005°33'19.1"W	Fly-By	-	-	3800 ft	-	-	-	-	-
RNP 02	RNP APCH	TF	SHST1	16°08'00.1"S / 005°38'30.7"W	Fly-By	5	268.7° / 286°	-	-	-	-	-	-
RNP 02	RNP APCH	TF	SHSF1	16°03'10.6"S / 005°38'37.5"W	Fly-By	4.8	358.7° / 016°	-	-	-	-	R	-
RNP 02	RNP APCH	TF	RW02	15°57'57.8"S / 005°38'44.8"W	Fly-Over	5.2	358.7° / 016°	-	-	3.00°	50	-	-
RNP 02	RNP APCH	CF	SHSM1	15°53'21.3"S / 005°38'51.2"W	Fly-Over	4.6	358.7° / 016°	-	-	-	-	-	-
RNP 02	RNP APCH	DF	RATON	16°07'53.2"S / 005°33'19.1"W	Fly-By	-	-	-	-	-	-	R	-

Hold Identification

Holding Fix	Latitude (N) / Longitude (W)	Inbound True Track / Magnetic Track	Speed Limit (KTS)	Lower Limit / Upper Limit	Time / Distance	Turn Direction
RATON	16°07'53.2"S / 005°33'19.1"W	268.7° / 286°	-	3000 ft	1 min	L

Procedure Designator	Navigation Performance	Path Terminator	WPT Name	Latitude (N) / Longitude (W)	Fly-By / Fly-Over	Distance (NM)	True / Magnetic Track	Lower Limit / Upper Limit	Speed Limit (KTS)	VPA	TCH (ft)	Turn Direction	Remark
RNP 02	RNP APCH	IF	IBRUK	16°13'01.3"S / 005°38'23.6"W	Fly-By	-	-	2700 ft	-	-	-	-	-
RNP 02	RNP APCH	TF	SHST1	16°08'00.1"S / 005°38'30.7"W	Fly-By	5	358.7° / 016°	-	-	-	-	-	-
RNP 02	RNP APCH	TF	SHSF1	16°03'10.6"S / 005°38'37.5"W	Fly-By	4.8	358.7° / 016°	-	-	-	-	-	-
RNP 02	RNP APCH	TF	RW02	15°57'57.8"S / 005°38'44.8"W	Fly-Over	5.2	358.7° / 016°	-	-	3.00°	50	-	-
RNP 02	RNP APCH	CF	SHSM1	15°53'21.3"S / 005°38'51.2"W	Fly-Over	4.6	358.7° / 016°	-	-	-	-	-	-
RNP 02	RNP APCH	DF	RATON	16°07'53.2"S / 005°33'19.1"W	Fly-By	-	-	-	-	-	-	R	-

Hold Identification

Holding Fix	Latitude (N) / Longitude (W)	Inbound True Track / Magnetic Track	Speed Limit (KTS)	Lower Limit / Upper Limit	Time / Distance	Turn Direction
RATON	16°07'53.2"S / 005°33'19.1"W	268.7° / 286°	-	3000 ft	1 min	L

Procedure Designator	Navigation Performance	Path Terminator	WPT Name	Latitude (N) / Longitude (W)	Fly-By / Fly-Over	Distance (NM)	True / Magnetic Track	Lower Limit / Upper Limit	Speed Limit (KTS)	VPA	TCH (ft)	Turn Direction	Remark
RNP 02	RNP APCH	IF	DUNLU	16°08'06.9"S / 005°43'42.3"W	Fly-By	-	-	3800 ft	-	-	-	-	-
RNP 02	RNP APCH	TF	SHST1	16°08'00.1"S / 005°38'30.7"W	Fly-By	5	088.7° / 106°	-	-	-	-	-	-
RNP 02	RNP APCH	TF	SHSF1	16°03'10.6"S / 005°38'37.5"W	Fly-By	4.8	358.7° / 016°	-	-	-	-	L	-
RNP 02	RNP APCH	TF	RW02	15°57'57.8"S / 005°38'44.8"W	Fly-Over	5.2	358.7° / 016°	-	-	3.00°	50	-	-
RNP 02	RNP APCH	CF	SHSM1	15°53'21.3"S / 005°38'51.2"W	Fly-Over	4.6	358.7° / 016°	-	-	-	-	-	-
RNP 02	RNP APCH	DF	RATON	16°07'53.2"S / 005°33'19.1"W	Fly-By	-	-	-	-	-	-	R	-

Hold Identification

Holding Fix	Latitude (N) / Longitude (W)	Inbound True Track / Magnetic Track	Speed Limit (KTS)	Lower Limit / Upper Limit	Time / Distance	Turn Direction
RATON	16°07'53.2"S / 005°33'19.1"W	268.7° / 286°	-	3000 ft	1 min	L

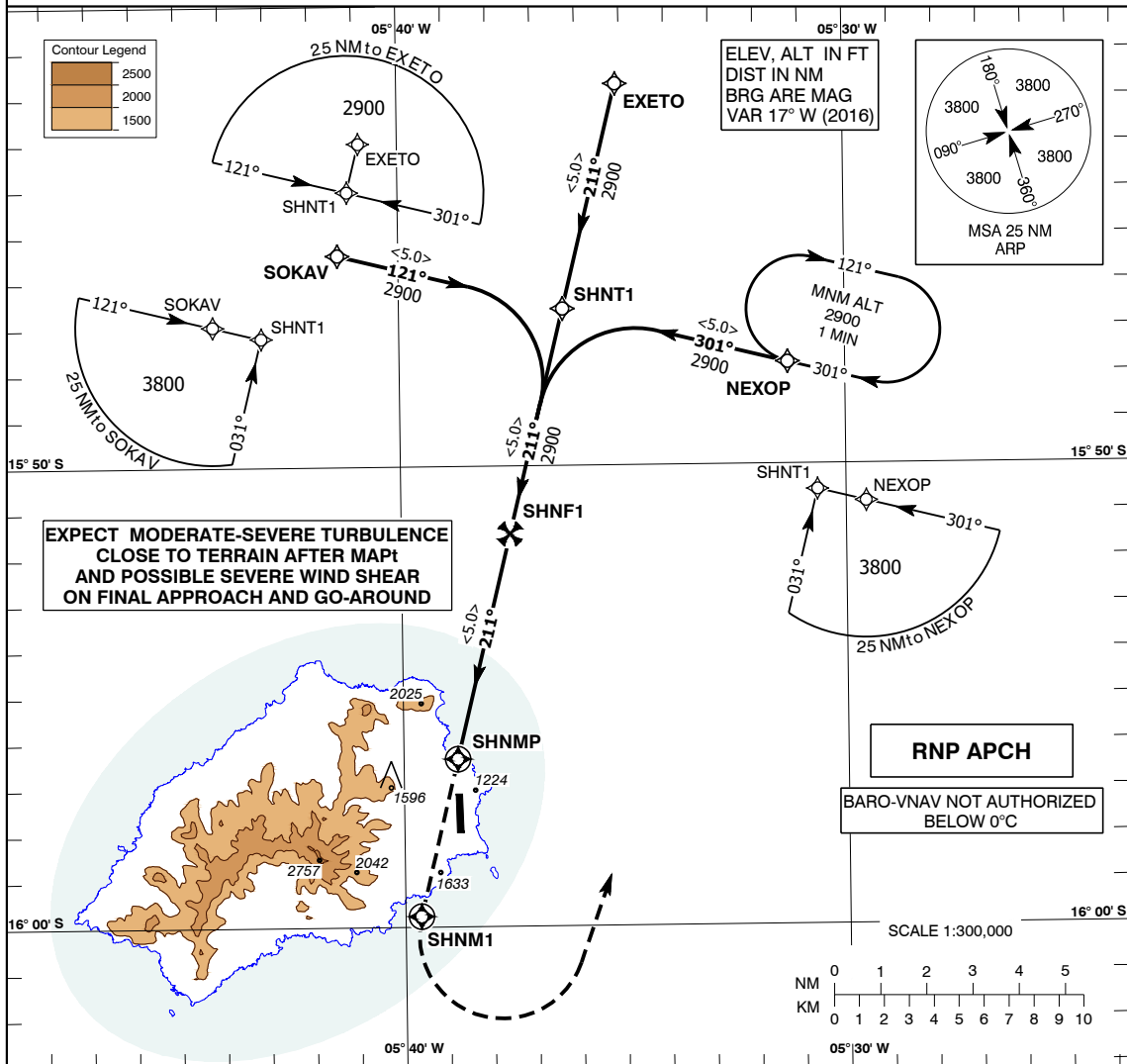
**INSTRUMENT
APPROACH
CHART - ICAO**

AERODROME ELEV **1017FT**
HEIGHT RELATED TO
THR RWY 20 - ELEV **1013FT**

TWR 118.2
APP 119.5

SAINT HELENA (FHSH)

Saint Helena Airport
RNP RWY 20
CAT A, B, C



MISSED APPROACH:
Climb straight ahead to **SHNM1**.
At **SHNM1** turn left direct
to **NEXOP** and hold.
Climb to **4000**.

TRANSITION ALT 6000

RDH 50

THR ELEV 1013

NM from **THR RW 20**

Aircraft Category		A	B	C	Recommended profile (Gradient 5.2%, 320 FT/NM)						
OCA (OCH)	LNAV	1970 (957)	1970 (957)	1970 (957)	Distance from THR	3	4	5			
					ALT / HGT	2020 (1007)	2340 (1327)	2660 (1647)			
VM (C) OCA (OCH)	1970 (953)				Rate of descent	G/S KT	80	100	120	140	160
						FT/MIN	430	530	640	740	850

NOTES: 1. VM(C) prohibited on West side of RWY 02/20.
2. Final Approach offset by 15°.

CHANGE: Revised Significant points, Frequency

INSTRUMENT APPROACH DATA TABULATION	SAINT HELENA Saint Helena Airport RNP RWY 20
--	---

02.03.2017 Datum: WGS84 Magnetic variation: 17.06° W (WMM 01 January 2016)

Procedure Designator	Navigation Performance	Path Terminator	WPT Name	Latitude (N) / Longitude (W)	Fly-By / Fly-Over	Distance (NM)	True / Magnetic Track	Lower Limit / Upper Limit	Speed Limit (KTS)	VPA	TCH (ft)	Turn Direction	Remark
RNP 20	RNP APCH	IF	SOKAV	15°45'25.2"S / 005°41'21.8"W	Fly-By	-	-	3800 ft	-	-	-	-	-
RNP 20	RNP APCH	TF	SHNT1	15°46'36.5"S / 005°36'19.5"W	Fly-By	5	103.7° / 121°	-	-	-	-	-	-
RNP 20	RNP APCH	TF	SHNF1	15°51'29.1"S / 005°37'33.3"W	Fly-By	5	193.7° / 211°	-	-	-	-	R	-
RNP 20	RNP APCH	TF	SHNMP	15°56'21.8"S / 005°38'47.0"W	Fly-Over	5	193.7° / 211°	-	-	3.00°	50	-	-
RNP 20	RNP APCH	CF	SHNM1	15°59'46.6"S / 005°39'38.6"W	Fly-Over	3.5	193.7° / 211°	-	-	-	-	-	-
RNP 20	RNP APCH	DF	NEXOP	15°47'47.9"S / 005°31'17.3"W	Fly-By	-	-	-	-	-	-	L	-

Hold Identification

Holding Fix	Latitude (N) / Longitude (W)	Inbound True Track / Magnetic Track	Speed Limit (KTS)	Lower Limit / Upper Limit	Time / Distance	Turn Direction
NEXOP	15°47'47.9"S / 005°31'17.3"W	283.7° / 301°	-	2900 ft	1 min	R

Procedure Designator	Navigation Performance	Path Terminator	WPT Name	Latitude (N) / Longitude (W)	Fly-By / Fly-Over	Distance (NM)	True / Magnetic Track	Lower Limit / Upper Limit	Speed Limit (KTS)	VPA	TCH (ft)	Turn Direction	Remark
RNP 20	RNP APCH	IF	EXETO	15°41'43.8"S / 005°35'05.8"W	Fly-By	-	-	2900 ft	-	-	-	-	-
RNP 20	RNP APCH	TF	SHNT1	15°46'36.5"S / 005°36'19.5"W	Fly-By	5	193.7° / 211°	-	-	-	-	-	-
RNP 20	RNP APCH	TF	SHNF1	15°51'29.1"S / 005°37'33.3"W	Fly-By	5	193.7° / 211°	-	-	-	-	-	-
RNP 20	RNP APCH	TF	SHNMP	15°56'21.8"S / 005°38'47.0"W	Fly-Over	5	193.7° / 211°	-	-	3.00°	50	-	-
RNP 20	RNP APCH	CF	SHNM1	15°59'46.6"S / 005°39'38.6"W	Fly-Over	3.5	193.7° / 211°	-	-	-	-	-	-
RNP 20	RNP APCH	DF	NEXOP	15°47'47.9"S / 005°31'17.3"W	Fly-By	-	-	-	-	-	-	L	-

Hold Identification

Holding Fix	Latitude (N) / Longitude (W)	Inbound True Track / Magnetic Track	Speed Limit (KTS)	Lower Limit / Upper Limit	Time / Distance	Turn Direction
NEXOP	15°47'47.9"S / 005°31'17.3"W	283.7° / 301°	-	2900 ft	1 min	R

Procedure Designator	Navigation Performance	Path Terminator	WPT Name	Latitude (N) / Longitude (W)	Fly-By / Fly-Over	Distance (NM)	True / Magnetic Track	Lower Limit / Upper Limit	Speed Limit (KTS)	VPA	TCH (ft)	Turn Direction	Remark
RNP 20	RNP APCH	IF	NEXOP	15°47'47.9"S / 005°31'17.3"W	Fly-By	-	-	3800 ft	-	-	-	-	-
RNP 20	RNP APCH	TF	SHNT1	15°46'36.5"S / 005°36'19.5"W	Fly-By	5	283.7° / 301°	-	-	-	-	-	-
RNP 20	RNP APCH	TF	SHNF1	15°51'29.1"S / 005°37'33.3"W	Fly-By	5	193.7° / 211°	-	-	-	-	L	-
RNP 20	RNP APCH	TF	SHNMP	15°56'21.8"S / 005°38'47.0"W	Fly-Over	5	193.7° / 211°	-	-	3.00°	50	-	-
RNP 20	RNP APCH	CF	SHNM1	15°59'46.6"S / 005°39'38.6"W	Fly-Over	3.5	193.7° / 211°	-	-	-	-	-	-
RNP 20	RNP APCH	DF	NEXOP	15°47'47.9"S / 005°31'17.3"W	Fly-By	-	-	-	-	-	-	L	-

Hold Identification

Holding Fix	Latitude (N) / Longitude (W)	Inbound True Track / Magnetic Track	Speed Limit (KTS)	Lower Limit / Upper Limit	Time / Distance	Turn Direction
NEXOP	15°47'47.9"S / 005°31'17.3"W	283.7° / 301°	-	2900 ft	1 min	R