

BluesCube **Tour(B)**
BluesCube BC-CAB410B

SERVICE NOTES
Issued by RJA



Copyright © 2015 Roland Corporation

All rights reserved. No part of this publication may be reproduced in any form without the written permission of Roland Corporation.

Table of Contents

Cautionary Notes	2
Specifications	3
Location of Controls (BC-Tour(B)) (Top).....	6
Location of Controls (BC-Tour(B)) (Rear).....	7
Exploded View (BC-Tour(B)) (Cabinet).....	8
Disassembly Procedure (Detaching Chassis).....	8
Plain View (BC-Tour(B)) (Cabinet).....	9
Exploded View (BC-Tour(B)) (Chassis)	10
Exploded View (BC-Tour(B)) (Chassis) Parts List.....	11
Plain View (BC-Tour(B)) (Chassis)	12
Plain View (BC-Tour(B)) (Chassis) Parts List.....	13
Exploded View (BC-CAB410B)	14
Plain View (BC-CAB410B)	16
Plain View (BC-CAB410B) Parts List.....	17
Wiring Diagram/Block Diagram (BC-Tour(B)).....	18
Wiring Parts List (BC-Tour(B)).....	20
Wiring Diagram (BC-CAB410B)	20
Parts List (BC-Tour(B))	21
Parts List (BC-CAB410B)	24
Verifying the Version (BC-Tour(B))	25
Data Backup and Restore Operations (BC-Tour(B)) ..	25
System Update Procedure (BC-Tour(B))	25
Test Mode (BC-Tour(B)).....	26
Circuit Board (BC-Tour(B) Main Board).....	30
Circuit Diagram (BC-Tour(B) Main Board: 1/3)	32
Circuit Diagram (BC-Tour(B) Main Board: 2/3)	34
Circuit Diagram (BC-Tour(B) Main Board: 3/3)	36
Circuit Board (BC-Tour(B) Amp, Ptr-N, Ptr-P, Ptc-A, Ptc-B Board)	38
Circuit Diagram (BC-Tour(B) Amp Board: 1/2).....	40
Circuit Diagram (BC-Tour(B) Amp Board: 2/2).....	42
Circuit Diagram (BC-Tour(B) Ptr-N Board)	44
Circuit Diagram (BC-Tour(B) Ptr-P Board)	45
Circuit Diagram (BC-Tour(B) Ptc-A Board)	46
Circuit Diagram (BC-Tour(B) Ptc-B Board).....	47
Circuit Board (BC-Tour(B) Panel Master, Panel VR, Jack Phones, Jack FS, Input Tour Board).....	48
Circuit Diagram (BC-Tour(B) Panel Master Board)...	50
Circuit Diagram (BC-Tour(B) Panel VR Board).....	52
Circuit Diagram (BC-Tour(B) Jack Phones Board)....	54
Circuit Diagram (BC-Tour(B) Jack FS Board)	56
Circuit Diagram (BC-Tour(B) Input Tour Board).....	58

Cautionary Notes

Before beginning the procedure, please read through this document. The matters described may differ according to the model.

No User Data

This product cannot save user data. Backing up user data during servicing is not required.

Part Replacement

When replacing components near the power-supply circuit or a heat-generating circuit (such as a circuit provided with a heat sink or including a cement resistor), carry out the procedure according to the instructions with respect to the part number, direction, and attachment position (mounting so as to leave an air gap between the component and the circuit board, etc.).

Parts List

A component whose part code is ***** will not be supplied as a service part because one of the following reasons applies.

- Because it is supplied as an assembled part (under a different part code).
- Because a number of circuit boards are grouped together and supplied as a single circuit board (under a different part code).
- Because supply is prohibited due to copyright restrictions.
- Because reissuance is restricted.
- Because the part is made to order (at current market price).
- Because it is carried in electronic data on the Roland web site.
- Because it is a package or an accessory irrelevant to the function maintenance of the main body.
- Because it can be replaced with an article on the market. (battery or etc.)

Circuit Diagram

In the circuit diagram, "NIU" is an abbreviation for "Not in Use," and "UnPop" is an abbreviation for "Unpopulated." They both mean non-mounted components. The circuit board and circuit board diagram show silk-screened indications, but no components are mounted.

Specifications

Roland Blues Cube Tour (BC-TOUR(B)): Guitar Amplifier

Rated Power Output

100 W

Nominal Input Level

INPUT HIGH: -10 dBu (1 M Ω)

INPUT LOW: 0 dBu

EFX LOOP A RETURN: -10 dBu

EFX LOOP B RETURN: -10 dBu

Controls

POWER switch

DUAL TONE switch

CH SELECT switch

[CLEAN channel]

BOOST button

TONE button

VOLUME knob

[CLEAN channel EQUALIZER]

BASS knob

MIDDLE knob

MIDDLE knob

TREBLE knob

[CRUNCH channel]

BOOST button

TONE button

GAIN knob

VOLUME knob

[CRUNCH channel EQUALIZER]

BASS knob

MIDDLE knob

TREBLE knob

[EFFECT]

EFX LOOP A button

EFX LOOP B button

REVERB knob

[MASTER]

PRESENCE knob

MASTER knob

POWER CONTROL switch

0.5 W, 15 W, 45 W, MAX

[LINE OUT]

GND LIFT switch

[SPEAKER OUT]

IMP.SELECT switch

4 Ω /8 Ω , 16 Ω

Indicators

CLEAN CHANNEL

BOOST

TONE

CRUNCH CHANNEL

BOOST

TONE

EFX LOOP A

EFX LOOP B

POWER

Connectors

INPUT HIGH/LOW jack: 1/4-inch phone type

LINE OUT jack: 1/4-inch phone type

LINE OUT jack: XLR type

PHONES jack: Stereo 1/4-inch phone type

FOOT SW (TIP: EFX LOOP A, RING: EFX LOOP B) jack: 1/4-inch TRS phone type

FOOT SW (TIP: CH SELECT, RING: DUAL TONE) jack: 1/4-inch TRS phone type

FOOT SW (GA-FC) jack: 1/4-inch TRS phone type

EFX LOOP A SEND jack: 1/4-inch phone type

EFX LOOP A RETURN jack: 1/4-inch phone type

EFX LOOP B SEND jack: 1/4-inch phone type

EFX LOOP B RETURN jack: 1/4-inch phone type

REC OUT port: USB type B

MIDI IN jack

SPEAKER OUT jack

AC IN jack

Power Consumption

108 W

Dimensions

545 (W) x 233 (D) x 234 (H) mm

21-1/2 (W) x 9-3/16 (D) x 9-1/4 (H) inches

Weight

8.0 kg

17 lbs 11 oz

Accessories

Owner's Manual (#5100049352)

Power Cord (#5100012292, #00894378, #03450323, #00907001, #00894389, #5100013842)

Speaker Connection Cable (#5100044146)

GA-FC sticker (#5100047132)

Options (sold separately)

Footswitch (BOSS FS-5L, BOSS FS-6, BOSS FS-7)

GA Foot Controller (GA-FC)

* Printed matters will not be supplied after the end of the production. Then, download the electronic file from the Roland web site.

* In the interest of product improvement, the specifications and/or appearance of this unit are subject to change without prior notice.

**Roland Blues Cube Cabinet410 (BC-CAB410B):
Guitar Amplifier Cabinet**

Rated Power Input

100 W

Speakers

25 cm (10 inches) x 4

Nominal Impedance

4 Ω

Connectors

INPUT jack: 1/4-inch phone type

Dimensions

677 (W) x 317 (D) x 698 (H) mm

26-11/16 (W) x 12-1/2 (D) x 27-1/2 (H) inches

Weight

25.6 kg

56 lbs 7 oz

Accessories

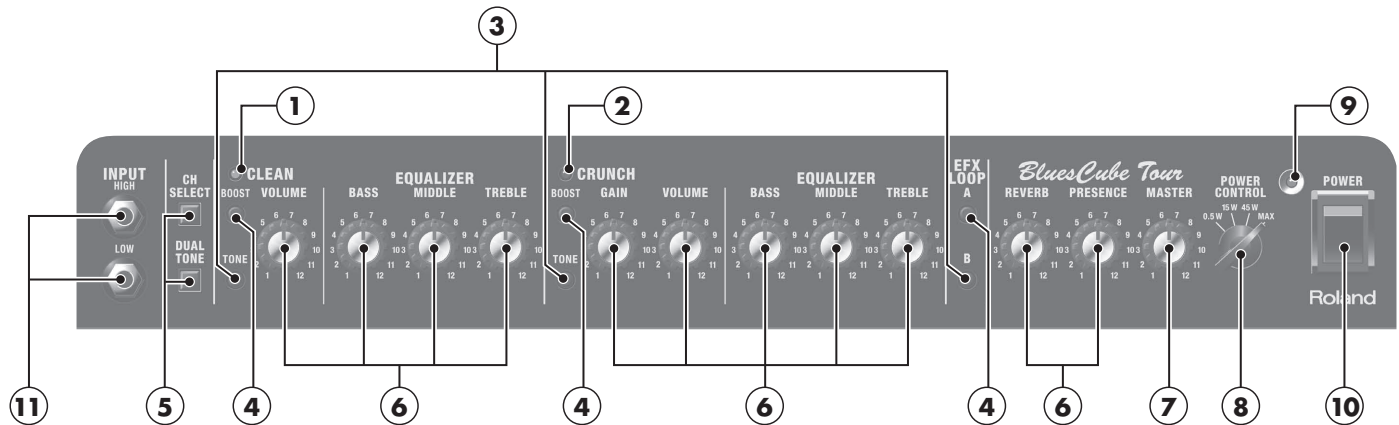
Caster (#5100044175) x 4

Owner's Manual (#5100049353)

** Printed matters will not be supplied after the end of the production. Then,
download the electronic file from the Roland web site.*

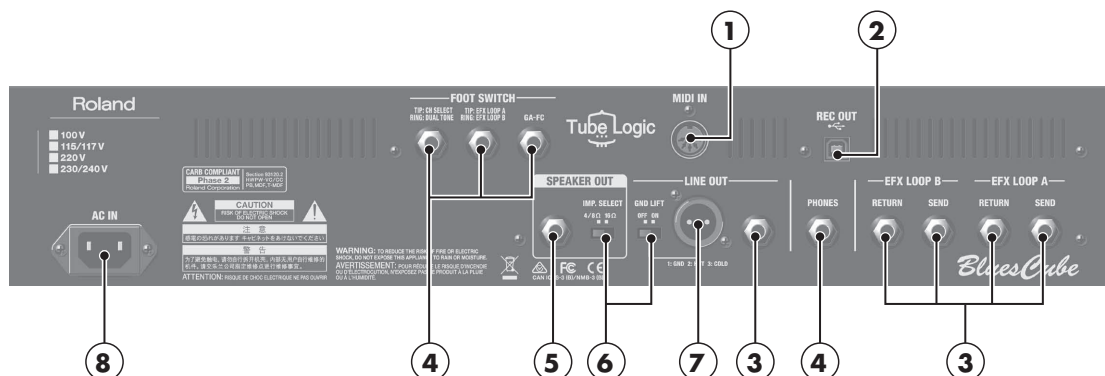
** In the interest of product improvement, the specifications and/or appearance of
this unit are subject to change without prior notice.*

Location of Controls (BC-Tour(B)) (Top)



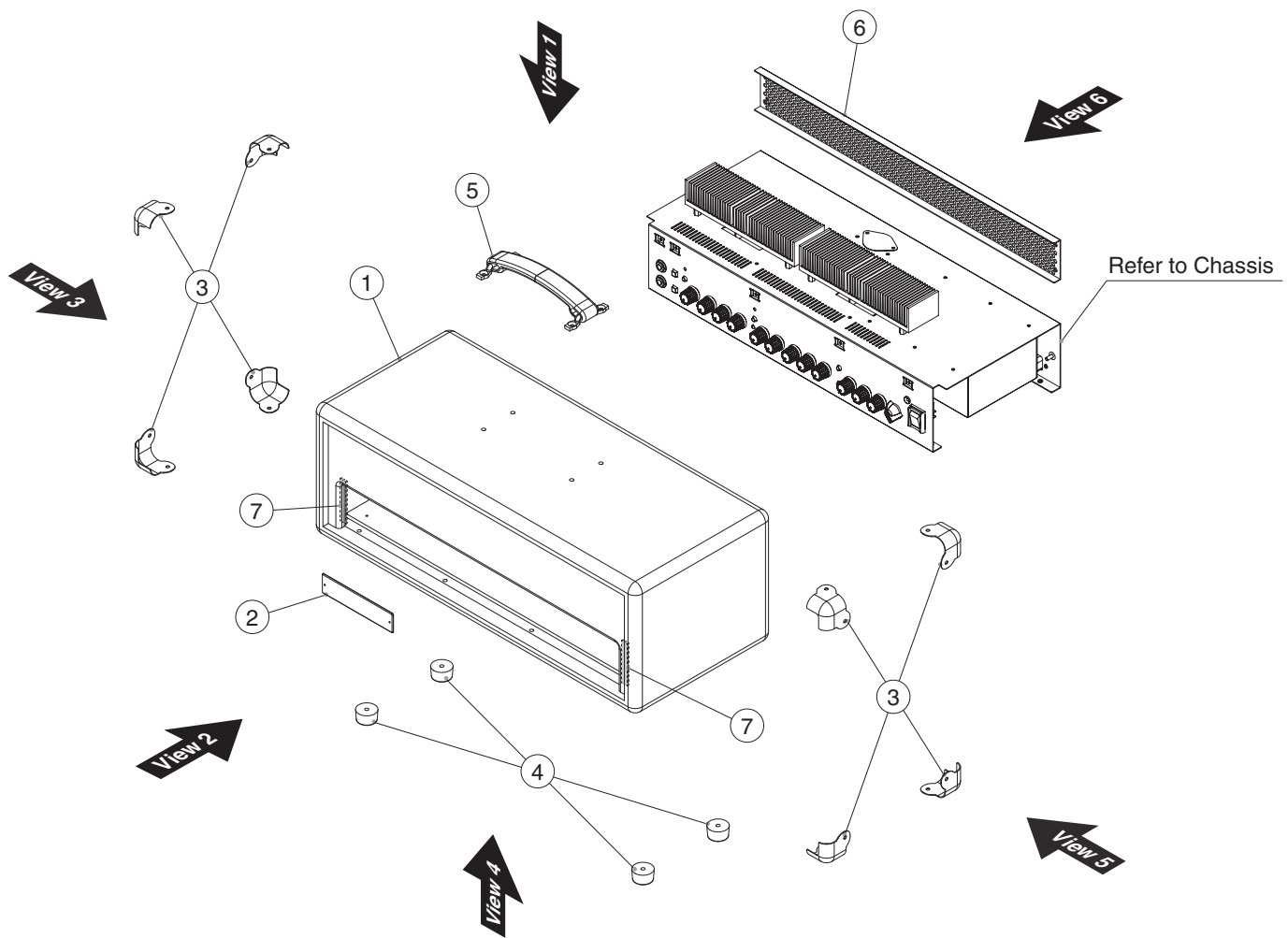
No.	Part Code	Part Name	Description	Q'ty
1	03349989	LED (GREEN)	L-34GDSL-FPB	1
	5100045356	CUSHION		1
	5100004216	LED SPACER	LEDH-7	1
2	03349978	LED(RED)	L-34HDSL-FPB	1
	5100045356	CUSHION		1
	5100004216	LED SPACER	LEDH-7	1
3	5100041047	C-KEYTOP	MP-21035-97Y1A-000	3
	01780101	TACT SWITCH	SKQKABD010	3
	5100042864	LED	WW03A3AYH1-B4(SQ)	3
	5100044430	LED SPACER	LEDH-1.5	3
4	5100041047	C-KEYTOP	MP-21035-97Y1A-000	3
	01780101	TACT SWITCH	SKQKABD010	3
	5100042864	LED	WW03A3AYH1-B4(SQ)	3
	5100044430	LED SPACER	LEDH-1.5	3
	40122612	ACETATE TAPE	NITTO #5 BLACK W10MM 30M 20P	-
5	5100041048	S-KEYTOP	MP-21035-19N6A-000	2
	01780101	TACT SWITCH	SKQKABD010	2
6	5100041045	R-KNOB	MP-21035-22A1A-000	11
	5100033433	ROTARY POTENTIOMETER	R0923NOCV1B103FE00A1	11
	* This unit includes the following parts.			
	*****	VR NUT	attached to VR	11
	*****	VR WASHER	attached to VR	11
7	5100041045	R-KNOB	MP-21035-22A1A-000	1
	5100033432	ROTARY POTENTIOMETER	R0923GOCV1P203FE00A4	1
	* This unit includes the following parts.			
	*****	VR NUT	attached to VR	1
	*****	VR WASHER	attached to VR	1
8	5100041046	INDEX KNOB	MP-21035-23A1A-000	1
	5100042592	SWITCH	S171EV114GFS2AN17	1
	* This unit includes the following parts.			
	*****	NUT	attached to Switch	1
	*****	WASHER	attached to Switch	1
	*****	SPACER	attached to Switch	1
9	5100032921	LED	61-238R-REGBB7C-A03-ET	1
	5100041049	LED ESCUTCHEON	ME-21035-8010A-000	1
	5100041050	LED LENS	MP-21035-52N6A-000	1
	40122612	ACETATE TAPE	NITTO #5 BLACK W10MM 30M 20P	-
10	01786012	SEESAW SWITCH	JW-M11RKK	1
	01786045	SW HOLDER	AT-217K	1
	5100004357	HIMELON	21X3X0.35T W / ADH(SD000476)	2
11	5100023843	6.5MM JACK	LJB0664-4SS	2
	* This unit includes the following parts.			
	*****	JACK NUT	attached to Jack	2
	*****	JACK WASHER	attached to Jack	2
	5100042577	JACK SPACER T3.4	MP-21035-29Q1A-MAH	2

Location of Controls (BC-Tour(B)) (Rear)



No.	Part Code	Part Name	Description	Q'ty
1	03909767	DIN CONNECTOR	HDC-052A-11	1
2	5100010665	USB CONNECTOR B TYPE FEMALE	2549A-04G2T(610-02001-04-00)	1
3	5100023843	6.5MM JACK	LJB0664-4SS	5
		* This unit includes the following parts.		
		***** JACK NUT	attached to Jack	5
		***** JACK WASHER	attached to Jack	5
	5100042577	JACK SPACER T3.4	MP-21035-29Q1A-MAH	5
4	5100023507	6.5MM JACK	LJB0664-6(F3439950R0)	4
		* This unit includes the following parts.		
		***** JACK NUT	attached to Jack	4
		***** JACK WASHER	attached to Jack	4
	5100042577	JACK SPACER T3.4	MP-21035-29Q1A-MAH	4
5	5100002620	6.5MM JACK	S2/BNB PC-C KINKED CL1169	1
		* This unit includes the following parts.		
		***** JACK NUT	attached to Jack	1
		***** JACK WASHER	attached to Jack	1
6	04459978	SLIDE SWITCH	SV70050F-0202-10T-NN	2
7	00122123	XLR CONNECTOR	YKF52-5003N	1
8	5100039807	AC INLET S-03-11	EJ-HF301-1101A-MML	1

Exploded View (BC-Tour(B)) (Cabinet)

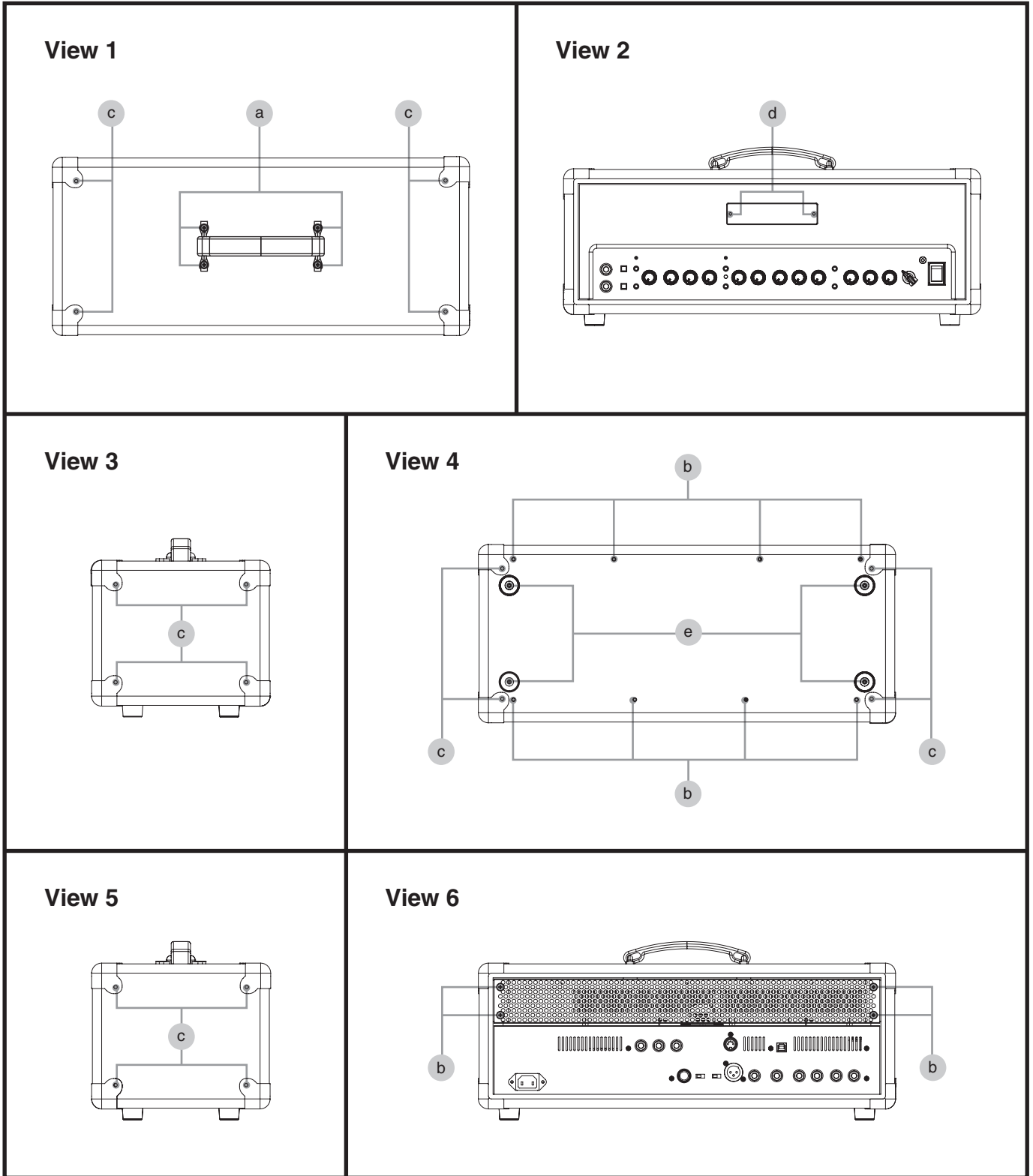


No.	Part Code	Part Name	Description	Q'ty
1	5100044165	CABINET		1
2	5100041041	BADGE	LB-21035-4422A-000	1
3	5100041038	CORNER COVER EK1081 NI	ME-21035-0610A-000	8
4	5100041039	FOOT EK1206	MP-21035-47Q1A-000	4
5	5100041040	HANDLE EKH1005	MI-05168-0201A-000	1
6	5100044167	REAR COVER		1
7	5100047168	CU-EVA	70X5X4T BLK	2

Disassembly Procedure (Detaching Chassis)

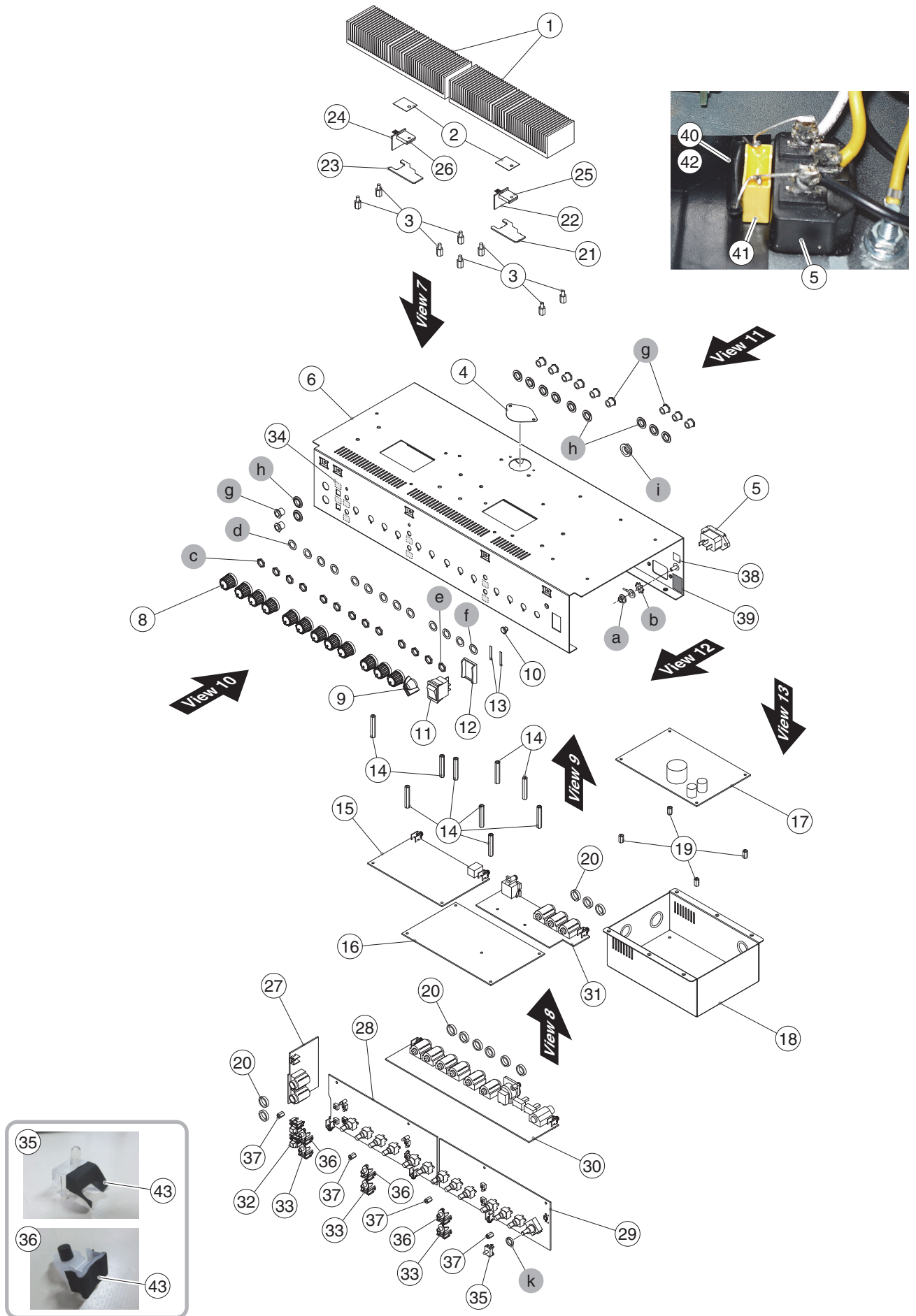
1. Remove screw **b** (x 4) in **View 6 (Plain View (BC-Tour(B)) (Cabinet) (p. 9))**.
2. Detach the Rear Cover.
3. Remove screw **b** (x 8) in **View 4 (Plain View (BC-Tour(B)) (Cabinet) (p. 9))**.
4. Pull out the Chassis Assy.

Plain View (BC-Tour(B)) (Cabinet)



No.	Part Code	Part Name	Description	Q'ty
a	5100041072	SCREW M4X20 MS-40020-236AA-MY	OVAL MACHINE NI	4
b	40013023	SCREW M4X25	PAN MACHINE W /SW+PW FE BZC	12
c	5100043887	SCREW 3.5X16	TRUSS TAPPING A NI	16
d	5100041079	NAIL 1.4X16	SUS	2
e	5100024107	SCREW 4X16	BINDING TAPPING A FE BZC	4

Exploded View (BC-Tour(B)) (Chassis)

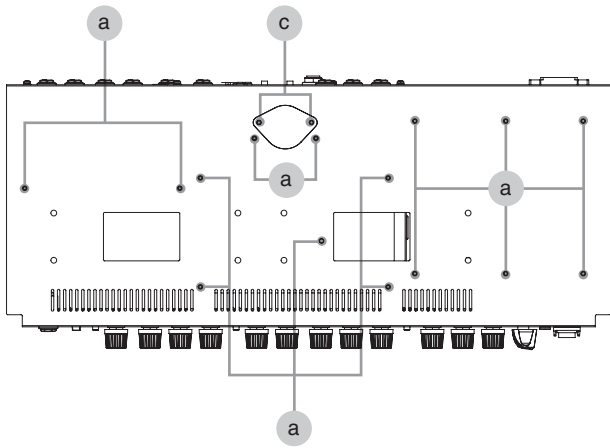


Exploded View (BC-Tour(B)) (Chassis) Parts List

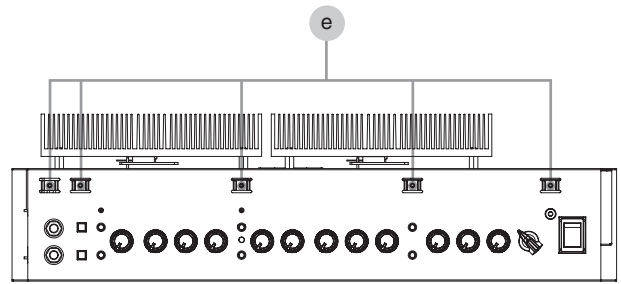
No.	Part Code	Part Name	Description	Q'ty
1	5100041052	HEATSINK	MK-21035-K05A1-MVN	2
2	40239345	INSULATOR	BFG-20D-3	2
3	5100044183	BOSS NUT	M4-L7-H10-A7-B7-N4	8
4	5100041057	ATTACHMENT COVER SHEET	MP-21035-64A5A-000	1
5	5100039807	AC INLET S-03-11	EJ-HF301-1101A-MML	1
6	5100044166	CHASSIS		1
8	5100041045	R-KNOB	MP-21035-22A1A-000	12
9	5100041046	INDEX KNOB	MP-21035-23A1A-000	1
10	5100041049	LED ESCUTCHEON	ME-21035-8010A-000	1
11	01786012	SEESAW SWITCH	JW-M11RKK	1
12	01786045	SW HOLDER	AT-217K	1
13	5100004357	HIMELON	21X3X0.35T W / ADH(SD000476)	2
14	5100041077	STANDOFF M3-L5.5-H33-C	MN-03025-06041-MQC	9
15	5100041270	MAIN BOARD ASSY		
	5100043513	AMP SHEET ASSY		1
	* This unit includes the following parts.			
16	*****	AMP BOARD		1
21	*****	PTC-A BOARD		1
22	*****	PTR-P BOARD		1
23	*****	PTC-B BOARD		1
24	*****	PTR-N BOARD		1
25	5100039799	TRANSISTOR	2SA1943N	1
26	5100039798	TRANSISTOR	2SC5200N	1
			attached to PWB PTR-P BOARD	
			attached to PWB PTR-N BOARD	
17	5100049440	SWITCHING POWER SUPPLY	100V	1
	5100049441	SWITCHING POWER SUPPLY	117V	1
	5100049443	SWITCHING POWER SUPPLY	230-240V	1
	5100049442	SWITCHING POWER SUPPLY	220V	1
			for 100V	
			for 117VU, 117VBL, 117VU/CS	
			for 230VEU, 230VE, 240VA	
			for 220VCN	
18	5100045036	PS HOLDER		1
19	22150501	STAND OFF	M3-L5.5-H10 (BS)	4
20	5100042577	JACK SPACER T3.4	MP-21035-29Q1A-MAH	11
	5100043496	PANEL SHEET ASSY		1
	* This unit includes the following parts.			
27	*****	INPUT TOUR BOARD ASSY		1
28	*****	PANEL VR BOARD		1
29	*****	PANEL MASTER BOARD		1
30	*****	JACK PHONES BOARD		1
31	*****	JACK FS BOARD		1
c	*****	VR NUT		12
			attached to VR (PANEL VR, PANEL MASTER BOARD)	
d	*****	VR WASHER		12
			attached to VR (PANEL VR, PANEL MASTER BOARD)	
e	*****	NUT		1
			attached to Switch (PANEL MASTER BOARD)	
f	*****	WASHER		1
			attached to Switch (PANEL MASTER BOARD)	
g	*****	JACK NUT		11
			attached to Jack (JACK PHONES, JACK FS, INPUT TOUR BOARD)	
h	*****	JACK WASHER		11
			attached to Jack (JACK PHONES, JACK FS, INPUT TOUR BOARD)	
i	*****	JACK NUT		1
			attached to Jack (JACK PHONES BOARD)	
k	*****	SPACER		1
			attached to Switch (PANEL MASTER BOARD)	
32	5100041048	S-KEYTOP	MP-21035-19N6A-000	2
33	5100041047	C-KEYTOP	MP-21035-97Y1A-000	3
34	5100036269	EVA PACKING	S-KEYTOP	8
35	5100041050	LED LENS	MP-21035-52N6A-000	1
36	5100041047	C-KEYTOP	MP-21035-97Y1A-000	3
37	22150517	STANDOFF M3-L5.5-H8		4
38	40013812	CAUTION SEAL	IEC #142	1
39	5100044664	INSULATING TAPE	NITTO #223S 20M	-
40	5100044975	RESISTOR	RCR60CT52A335J	1
41	5100044983	CAPACITOR	MPX104K3IC3	1
42	5100045091	THERMAL SHRINKAGE TUBE	TA-03000-10011-NAZ 100MM	-
43	40122612	ACETATE TAPE	NITTO #5 BLACK W10MM 30M 20P	-
a	40011767	FLANGE HEX NUT M4	FE ZC	1
b	40011889	EXTERNAL TOOTH WASHER M4	FE CM	1

Plain View (BC-Tour(B)) (Chassis)

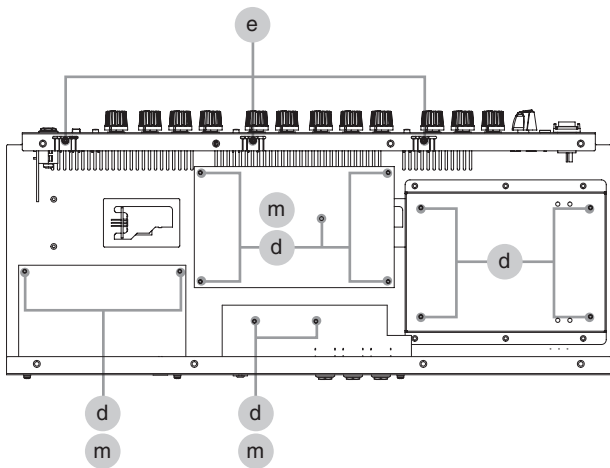
View 7



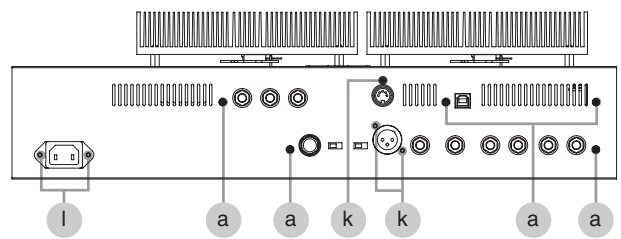
View 10



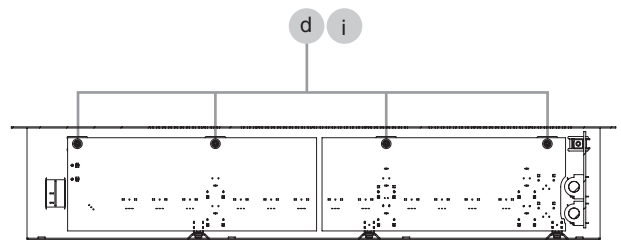
View 8



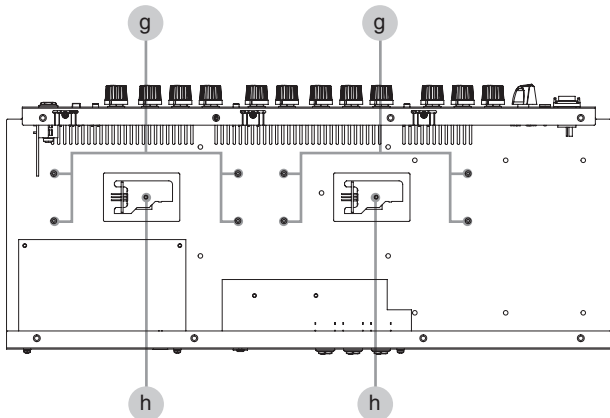
View 11



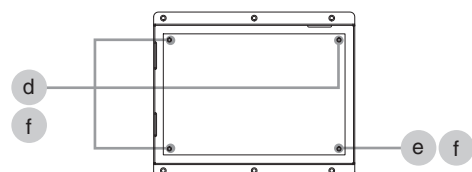
View 12



View 9



View 13



Plain View (BC-Tour(B)) (Chassis) Parts List

View 7

No.	Part Code	Part Name	Description	Q'ty
a	40237101	SCREW M3X8	PAN MACHINE W/SW+SMALL PW BZC	15
c	5100044182	THUMB SCREW M3X8	BLK	2

View 8

No.	Part Code	Part Name	Description	Q'ty
d	40017934	SCREW M3X6	PAN MACHINE W/SW+PW(L) FE ZC	13
e	40011423	SCREW M3X6	PAN SEMS FECM	3
m	5100041077	STANDOFF M3-L5.5-H33-C	MN-03025-06041-MQC	9

View 9

No.	Part Code	Part Name	Description	Q'ty
g	5100002691	SCREW M4X8	PAN MACHINE W/SW+PW ZC	8
h	40012889	SCREW M3X12	PAN MACHINE W/SW+PW FE ZC	2

View 10

No.	Part Code	Part Name	Description	Q'ty
e	40011423	SCREW M3X6	PAN SEMS FECM	5

View 11

No.	Part Code	Part Name	Description	Q'ty
a	40237101	SCREW M3X8	PAN MACHINE W/SW+SMALL PW BZC	5
k	40011101	SCREW 3X8	BINDING TAPTITE B BZC	3
l	40011156	SCREW 3X8	FLAT TAPTITE B BZC	2

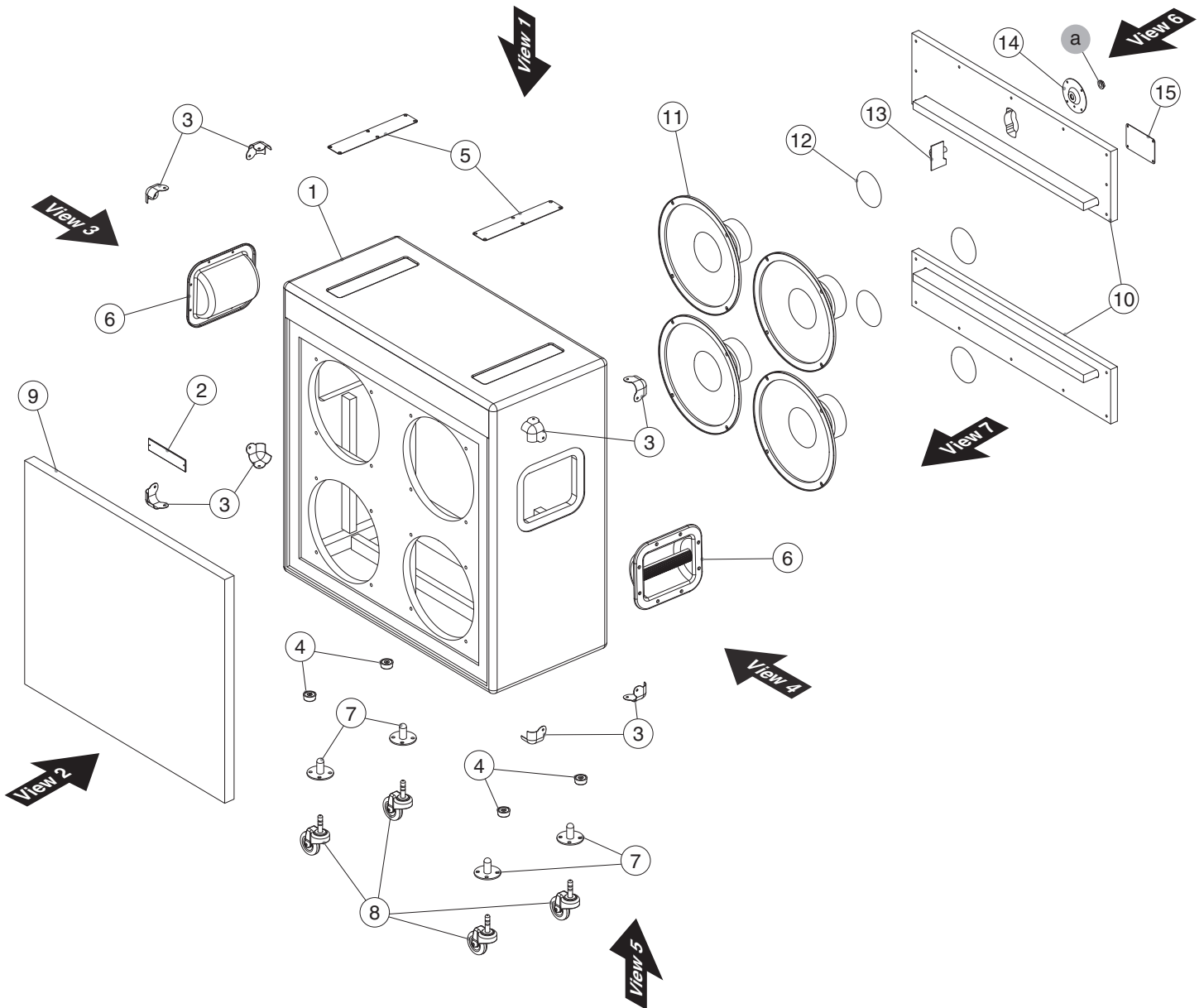
View 12

No.	Part Code	Part Name	Description	Q'ty
d	40017934	SCREW M3X6	PAN MACHINE W/SW+PW(L) FE ZC	4
i	22150517	STANDOFF M3-L5.5-H8		4

View 13

No.	Part Code	Part Name	Description	Q'ty
d	40017934	SCREW M3X6	PAN MACHINE W/SW+PW(L) FE ZC	3
e	40011423	SCREW M3X6	PAN SEMS FECM	1
f	22150501	STAND OFF	M3-L5.5-H10 (BS)	4

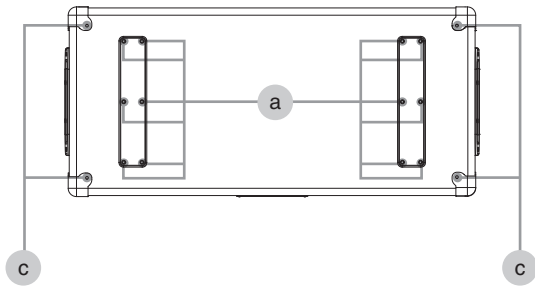
Exploded View (BC-CAB410B)



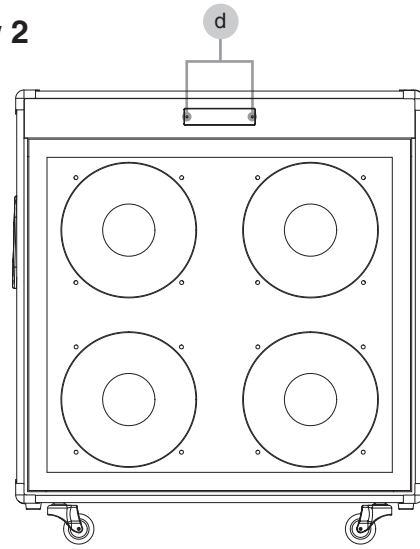
No.	Part Code	Part Name	Description	Q'ty
	5100044170	CABINET		1
	* This unit includes the following parts.			
1	*****	CABINET		1
9	*****	NET BOARD		1
10	*****	REAR BOARD	UPPER	1
	*****	REAR BOARD	LOWER	1
2	5100041041	BADGE	LB-21035-4422A-000	1
3	5100041038	CORNER COVER EK1081 NI	ME-21035-0610A-000	8
4	5100041039	FOOT EK1206	MP-21035-47Q1A-000	4
5	5100044174	FOOT PLATE		2
6	5100044171	HANDLE		2
7	5100044176	CASTER HOLDER		4
8	5100044175	CASTER		4
11	5100044188	SPEAKER	W1016-049A	4
12	5100046748	LABEL SPEAKER MAGNET		4
13	5100048202	JACK BOARD ASSY		1
	* This unit includes the following parts.			
	5100002620	6.5MM JACK	S2/BNB PC-C KINKED CL1169	1
a	*****	JACK NUT	attached to Jack	1
14	5100044172	JACK PLATE		1
15	5100044173	CAUTION PLATE		1

Plain View (BC-CAB410B)

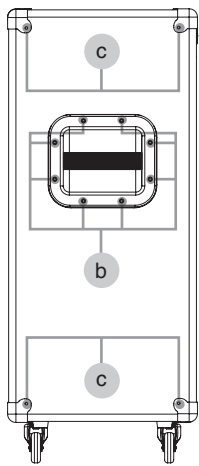
View 1



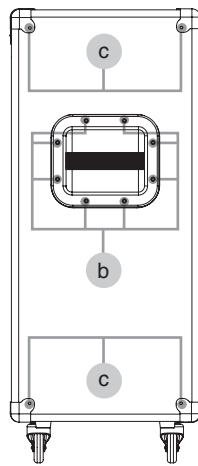
View 2



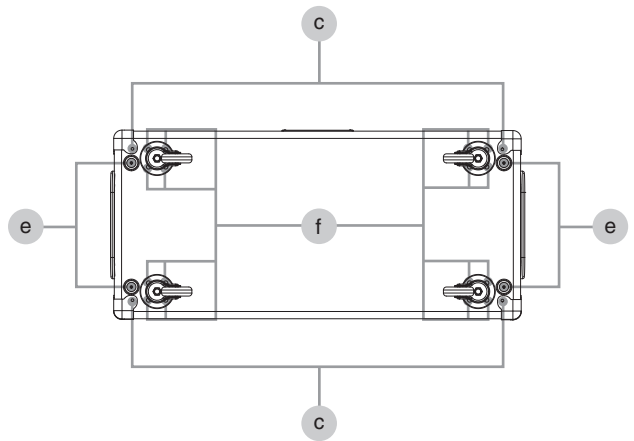
View 3



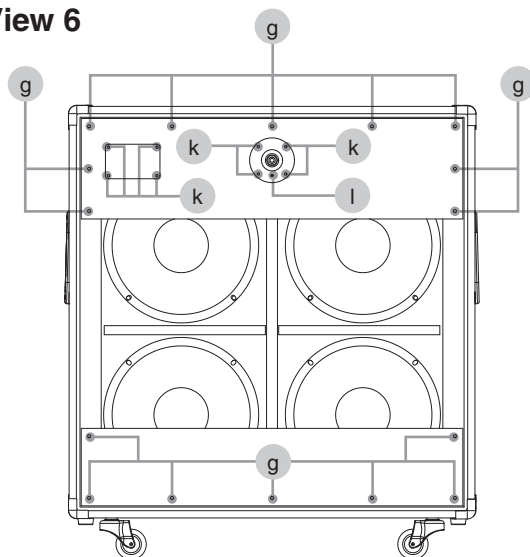
View 4



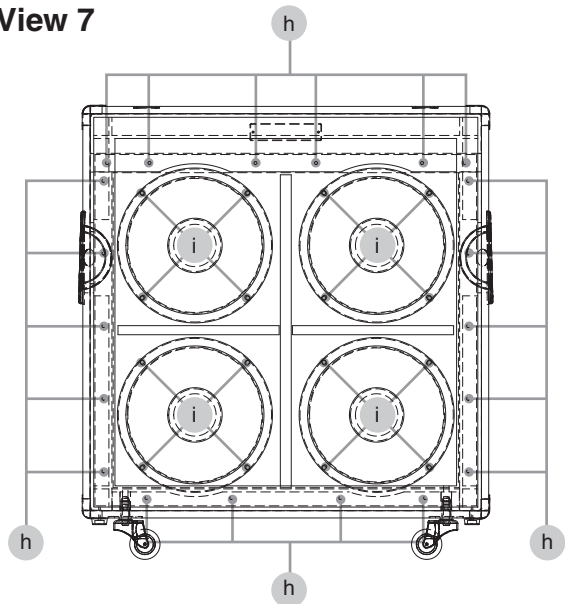
View 5



View 6



View 7



Plain View (BC-CAB410B) Parts List

View 1

No.	Part Code	Part Name	Description	Q'ty
a	5100047172	SCREW 3X16	OVAL TAPPING A BZC	12
c	5100043887	SCREW 3.5X16	TRUSS TAPPING A NI	4

View 2

No.	Part Code	Part Name	Description	Q'ty
d	5100041079	NAIL 1.4X16	SUS	2

View 3, 4

No.	Part Code	Part Name	Description	Q'ty
b	5100047173	SCREW M4X25	OVAL MACHINE NI	16
c	5100043887	SCREW 3.5X16	TRUSS TAPPING A NI	8

View 5

No.	Part Code	Part Name	Description	Q'ty
c	5100043887	SCREW 3.5X16	TRUSS TAPPING A NI	4
e	40010689	SCREW 4X25	TRUSS TAPPING A FE BZC	4
f	40677623	SCREW 4X16	TRUSS TAPPING A FE NI	16

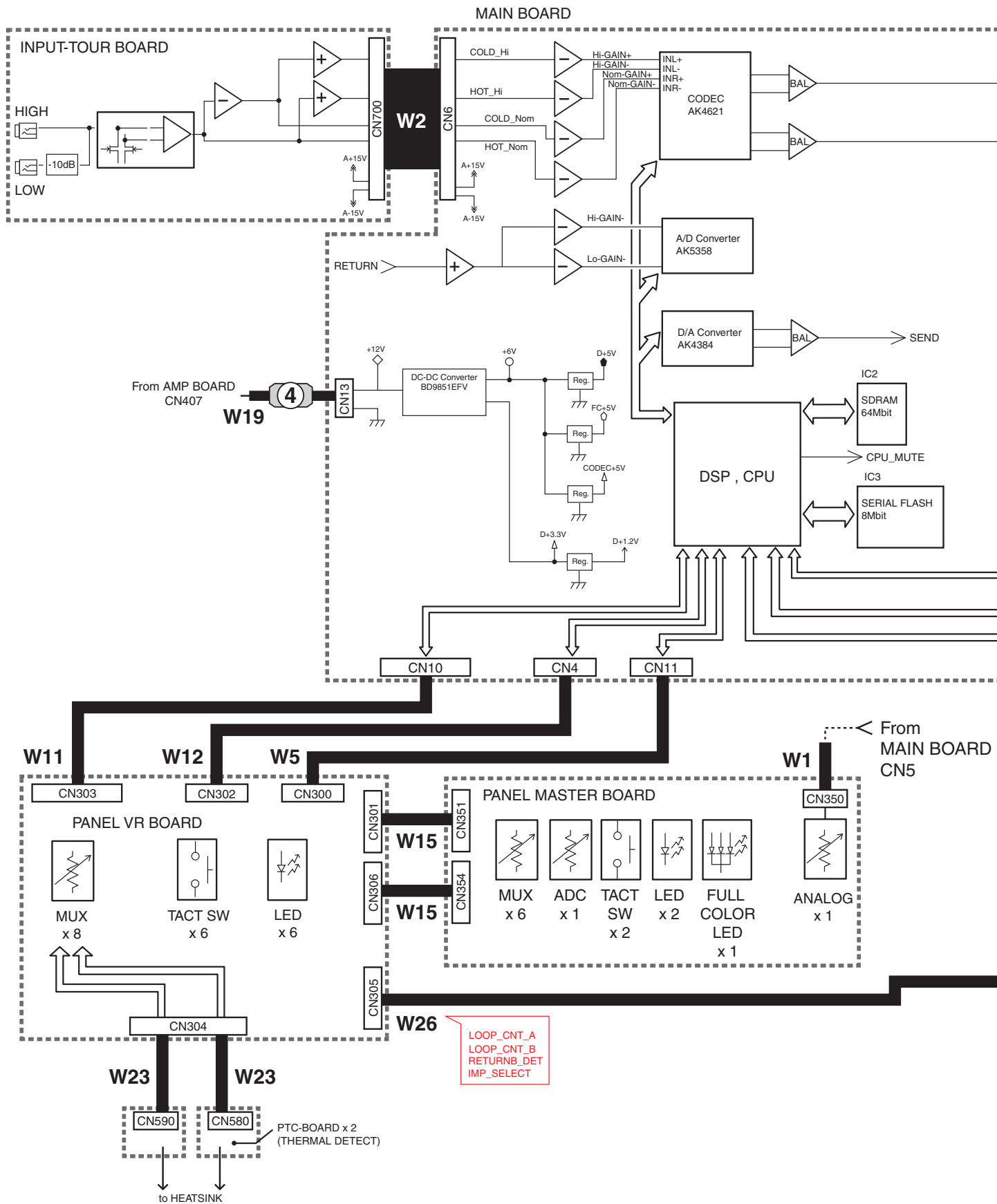
View 6

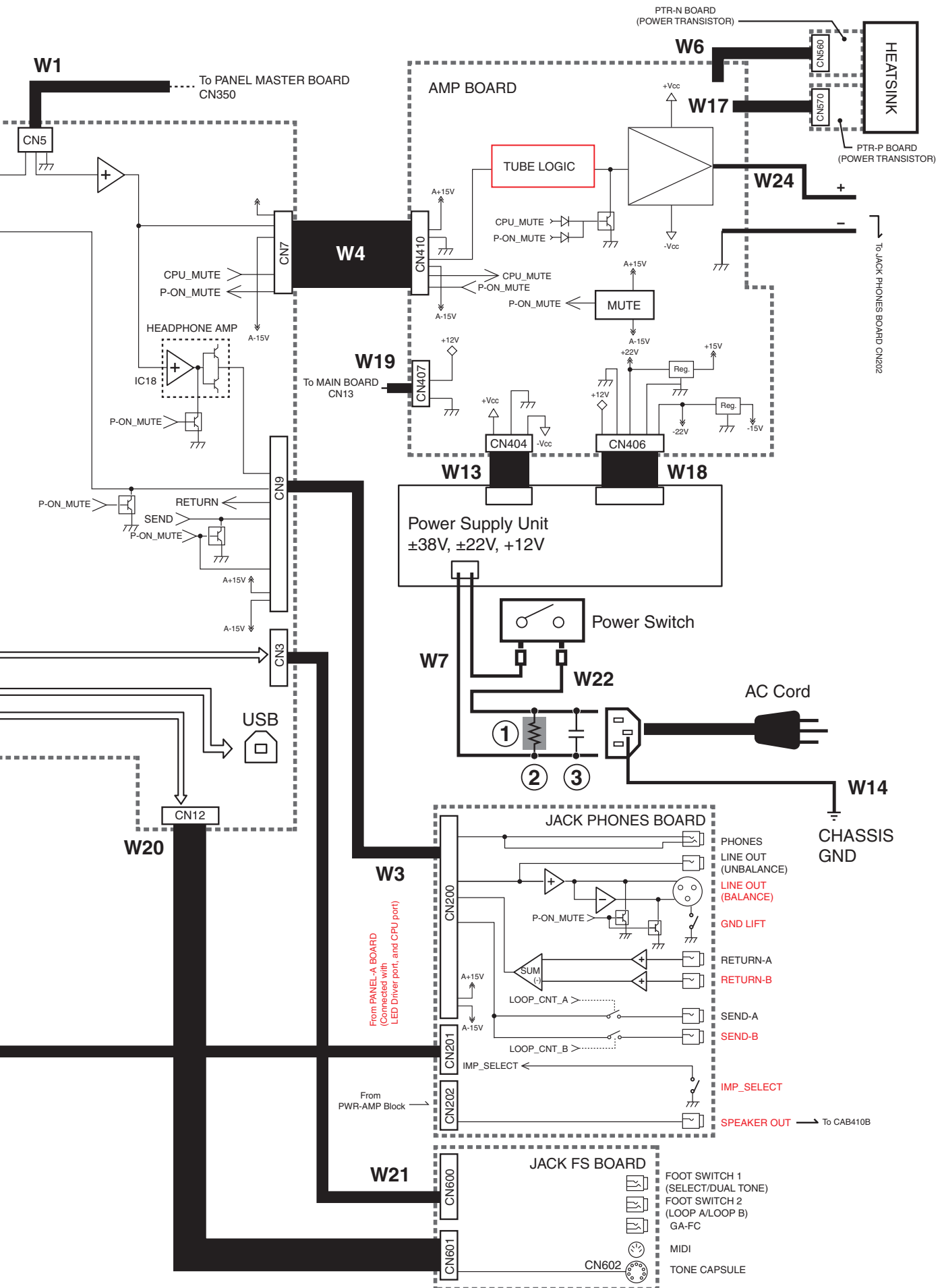
No.	Part Code	Part Name	Description	Q'ty
g	5100044187	SCREW 4X35	TRUSS TAPPING A NI	16
	5100043897	PLAIN WASHER 4.2X10X1	NI (MC-10004-10311-MYC)	16
k	5100033933	SCREW 3.5X16	TRUSS TAPPING A BZC	8
l	40012945	SCREW M3X6	PAN MACHINE W/SW+PW BZC	1

View 7

No.	Part Code	Part Name	Description	Q'ty
h	40010690	SCREW 4X30	TRUSS TAPPING A FE BZC	18
i	40010390	SCREW M5X25	BINDING HEAD FE BZC	16

Wiring Diagram/Block Diagram (BC-Tour(B))

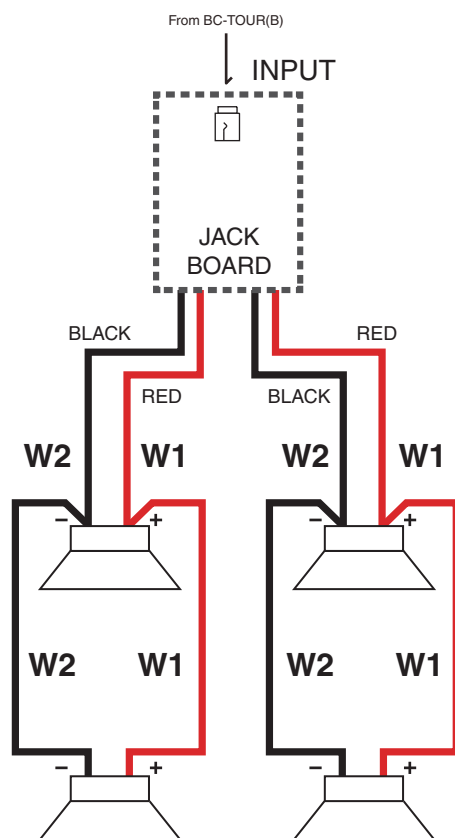




Wiring Parts List (BC-Tour(B))

No.	Part Code	Part Name	Description	Q'ty
1	5100045091	THERMAL SHRINKAGE TUBE	TA-03000-10011-NAZ 100MM	-
2	5100044975	RESISTOR	RCR60CT52A335J	1
3	5100044983	CAPACITOR	MPX104K3IC3	1
4	5100011965	FERRITE-CORE	ZCAT1325-0530A	1
W1	5100043551	WIRING	W1 (2547#28)	1
W2	5100041394	WIRING	W2 2547#28 /1007#28	1
W3	5100043552	WIRING	W3 (1007#28 /1185#28)	1
W4	5100043553	WIRING	W4 (1007#28 /1185#28)	1
W5	5100043557	WIRING	W15 (1007#28)	1
W6	5100041400	WIRING	W6 1015#22-RD/BK/WT	1
W7	5100043554	WIRING	W7 (1672#22-BLK/WHT)	1
W11	5100043555	WIRING	1007#28 11X125-PHR-SAN-F	1
W12	5100043556	WIRING	1007#28 10X125-PHR-SAN-F	1
W13	5100043805	WIRING	W13 (1015#22)	1
W14	5100033985	WIRING	W14	1
W15	5100041384	WIRING	W15 1007#28 8X65-PHR-SAN-F	2
W17	5100043558	WIRING	W17 (1015#22-BU/BK/WT)	1
W18	5100043806	WIRING	1430#22 5X120-EHR-XHP-R	1
W19	5100043559	WIRING	1007#22 2X250-EHR-SCN-F	1
W20	5100043560	WIRING	W20 (1007#28 /2547#28)	1
W21	5100043561	WIRING	1007#28 14X280-PHR-SAN-F	1
W22	5100043562	WIRING	W22 (1672#22-BLK)	1
W23	5100041409	WIRING	W23 1007#28	1
W24	5100043563	WIRING	W24 (1015#22-RED/BLK)	1
W26	5100043565	WIRING	1007#28 5X310-PHR-SAN-F	1

Wiring Diagram (BC-CAB410B)



No.	Part Code	Part Name	Description	Q'ty
W1	5100044147	WIRING W1	1015#22-RED	4
W2	5100044148	WIRING W2	1015#22-BLK	4

Parts List (BC-Tour(B))

Safety Precautions:

The parts marked Δ have safety-related characteristics. Use only listed parts for replacement.

Due to one or more of the following reasons, parts with parts code ***** cannot be supplied as service parts.

- Supply is prohibited due to copyright restrictions.
- It is carried in electronic data on the Roland web site.
- The part is made to order (at current market price).
- It can be replaced with an article on the market. (battery or etc.)
- It is a package or an accessory irrelevant to the function maintenance of the main body.
- A number of circuit boards are grouped together and supplied as a single circuit board (under a different part code).
- Reissuance is restricted.
- It is supplied as an assembled part (under a different part code).

Note: The parts marked # are new. (initial parts) The description "Q'ty" means a necessary number of the parts per one product.

CASING						
#	5100044165	CABINET		1		
#	5100044167	REAR COVER		1		
	5100041057	ATTACHMENT COVER SHEET	MP-21035-64A5A-000	1		
CHASSIS						
#	5100044166	CHASSIS		1		
#	5100045036	PS HOLDER		1		
	01786045	SW HOLDER	AT-217K	1		
KNOB, BUTTON						
	5100041045	R-KNOB	MP-21035-22A1A-000	12		
	5100041046	INDEX KNOB	MP-21035-23A1A-000	1		
	5100041047	C-KEYTOP	MP-21035-97Y1A-000	6		
	5100041048	S-KEYTOP	MP-21035-19N6A-000	2		
SWITCH						
Δ	01786012	SEESAW SWITCH	JW-M11RKK	1		
	04459978	SLIDE SWITCH	SV70050F-0202-10T-NN	2		
	5100042592	SWITCH	S171EV114GFS2AN17	1		
	01780101	TACT SWITCH	SKQKABD010	8		
JACK, EXT TERMINAL						
	5100002620	6.5MM JACK	S2/BNB PC-C KINKED CL1169	1		
	5100023507	6.5MM JACK	LJB0664-6(F3439950R0)	4		
	5100023843	6.5MM JACK	LJB0664-4SS	7		
	03909767	DIN CONNECTOR	HDC-052A-11	1		
	5100010665	USB CONNECTOR B TYPE FEMALE	2549A-04G2T(610-02001-04-00)	1		
	00122123	XLR CONNECTOR	YKF52-5003N	1		
POWER SUPPLY UNIT						
#	Δ	5100049440	SWITCHING POWER SUPPLY	100V	for 100V	1
#	Δ	5100049441	SWITCHING POWER SUPPLY	117V	for 117VU, 117VBL, 117VU/CS	1
#	Δ	5100049442	SWITCHING POWER SUPPLY	220V	for 220VCN	1
#	Δ	5100049443	SWITCHING POWER SUPPLY	230-240V	for 230VEU, 230VE, 240VA	1
PWB ASSY						
#		5100041270	MAIN BOARD ASSY			1
#		5100043513	AMP SHEET ASSY			1
		* This unit includes the following parts.				
#		*****	AMP BOARD ASSY			1
#		*****	PTR-N BOARD ASSY			1
#		*****	PRT-P BOARD ASSY			1
#		*****	PTC-A BOARD ASSY			1
#		*****	PTC-B BOARD ASSY			1
#		5100043496	PANEL SHEET ASSY			1
		* This unit includes the following parts.				
#		*****	INPUT TOUR BOARD ASSY			1
#		*****	JACK FS BOARD ASSY			1
#		*****	JACK PHONES BOARD ASSY			1
#		*****	PANEL MASTER BOARD ASSY			1
#		*****	PANEL VR BOARD ASSY			1
TRANSISTOR						
		5100039798	TRANSISTOR	2SC5200N		1
		5100039799	TRANSISTOR	2SA1943N		1

DIODE				
	5100042864	LED	WW03A3AYH1-B4(SQ)	6
	03349978	LED(RED)	L-34HDSL-FPB	1
	03349989	LED (GREEN)	L-34GDSL-FPB	1
	5100032921	LED	61-238R-REGBB7C-A03-ET	1
RESISTOR				
	△ 5100044975	RESISTOR	RCR60CT52A335J	1
POTENTIOMETER				
	5100033432	ROTARY POTENTIOMETER	R0923GOCV1P203FE00A4	1
	5100033433	ROTARY POTENTIOMETER	R0923NOCV1B103FE00A1	11
CAPACITOR				
	△ 5100044983	CAPACITOR	MPX104K3IC3	1
WIRING, CABLE				
#	△ 5100043554	WIRING	W7 (1672#22-BLK/WHT)	1
#	5100043553	WIRING	W4 (1007#28/1185#28)	1
#	5100043552	WIRING	W3 (1007#28/1185#28)	1
#	5100043563	WIRING	W24 (1015#22-RED/BLK)	1
#	△ 5100043562	WIRING	W22 (1672#22-BLK)	1
#	5100043560	WIRING	W20 (1007#28/2547#28)	1
#	5100043558	WIRING	W17 (1015#22-BU/BK/WT)	1
#	5100043557	WIRING	W15 (1007#28)	1
#	5100043805	WIRING	W13 (1015#22)	1
#	5100043551	WIRING	W1 (2547#28)	1
	5100041394	WIRING	W2 2547#28/1007#28	1
#	5100043806	WIRING	1430#22 5X120-EHR-XHP-R	1
	5100041400	WIRING	W6 1015#22-RD/BK/WT	1
	5100041384	WIRING	W15 1007#28 8X65-PHR-SAN-F	2
#	5100043565	WIRING	1007#28 5X310-PHR-SAN-F	1
#	5100043561	WIRING	1007#28 14X280-PHR-SAN-F	1
#	5100043555	WIRING	1007#28 11X125-PHR-SAN-F	1
#	5100043556	WIRING	1007#28 10X125-PHR-SAN-F	1
	5100041409	WIRING	W23 1007#28	1
#	5100043559	WIRING	1007#22 2X250-EHR-SCN-F	1
	5100033985	WIRING	W14	1
AC INLET, OUTLET				
	△ 5100039807	AC INLET S-03-11	EJ-HF301-1101A-MML	1
SCREWS				
	40011423	SCREW M3X6	PAN SEMS FECM	9
	40017934	SCREW M3X6	PAN MACHINE W /SW+PW(L) FE ZC	20
	40237101	SCREW M3X8	PAN MACHINE W /SW+SMALL PW BZC	20
	40012889	SCREW M3X12	PAN MACHINE W /SW+PW FE ZC	2
#	5100002691	SCREW M4X8	PAN MACHINE W /SW+PW ZC	8
	5100041072	SCREW M4X20 MS-40020-236AA-MY	OVAL MACHINE NI	4
	40013023	SCREW M4X25	PAN MACHINE W /SW+PW FE BZC	12
	5100043887	SCREW 3.5X16	TRUSS TAPPING A NI	16
	40011101	SCREW 3X8	BINDING TAPTITE B BZC	3
	40011156	SCREW 3X8	FLAT TAPTITE B BZC	2
	5100024107	SCREW 4X16	BINDING TAPPING A FE BZC	4
#	5100044182	THUMB SCREW M3X8	BLK	2
#	5100044183	BOSS NUT	M4-L7-H10-A7-B7-N4	8
	40011767	FLANGE HEX NUT M4	FE ZC	1
	22150501	STAND OFF	M3-L5.5-H10 (BS)	4
	22150517	STANDOFF M3 L8		4
	5100041077	STANDOFF M3-L5.5-H33-C	MN-03025-06041-MQC	9
	40011889	EXTERNAL TOOTH WASHER M4	FECM	1
	5100041079	NAIL 1.4X16	SUS	2
MISCELLANEOUS				
	5100041040	HANDLE EKH1005	MI-05168-0201A-000	1
	5100041041	BADGE	LB-21035-4422A-000	1
	5100011965	FERRITE-CORE	ZCAT1325-0530A	1
	5100041039	FOOT EK1206	MP-21035-47Q1A-000	4
	5100041038	CORNER COVER EK1081 NI	ME-21035-0610A-000	8
	5100041052	HEATSINK	MK-21035-K05A1-MVN	2
	40239345	INSULATOR	BFG-20D-3	2
	5100041049	LED ESCUTCHEON	ME-21035-8010A-000	1
	5100041050	LED LENS	MP-21035-52N6A-000	1
	5100042577	JACK SPACER T3.4	MP-21035-29Q1A-MAH	11
	5100004216	LED SPACER	LEDH-7	2

MISCELLANEOUS

	5100044430	LED SPACER	LEDH-1.5	6
	5100003695	TERMINAL	PCB-12	9
#	5100047168	CU-EVA	70X5X4T BLK	2
#	5100045356	CUSHION	CR D8D4T10	2
	5100036269	EVA PACKING	S-KEYTOP	8
	5100004357	HIMELON	21X3X0.35T W/ADH(SD000476)	2
△	5100044664	INSULATING TAPE	NITTO #223S 20M	-
△	40122612	ACETATE TAPE	NITTO #5 BLACK W10MM 30M 20P	-
△	40013812	CAUTION SEAL	IEC #142	1
△	5100045091	THERMAL SHRINKAGE TUBE	TA-03000-10011-NAZ 100MM	-

ACCESSORIES (Standard)

#	5100044146	CONNECT CORD	W27	1
#	5100049352	OWNER'S MANUAL	MULTI LANGUAGE	1
#	5100047132	GA-FC SHEET		1
△	03340956	AC CORD SET PSE	100V YA-101/YP-3NB/YC-13	for 100V
△	5100012292	AC CORD SET	117VBL 2.5M 3P DAIKEI 117VBL	for 117VBL
△	00894378	AC CORD SET	120V SP301+IS14 SJT18/3	for 117VU, 117VUCS
△	03450323	AC CORD SET	220V YP-36 YC-13D	for 220VCN
△	00907001	AC CORD SET	240VE SP-62+IS-14	for 230VE
△	00894389	AC CORD SET	230V SP22+IS14 H05VV-F3G1.0	for 230VEU
△	5100013842	AC CORD SET	240VA 2.5M SAA HIRAKAWA	for 240VA

Parts List (BC-CAB410B)

Safety Precautions:

The parts marked \triangle have safety-related characteristics. Use only listed parts for replacement.

Due to one or more of the following reasons, parts with parts code ***** cannot be supplied as service parts.

- Supply is prohibited due to copyright restrictions.
- It is carried in electronic data on the Roland web site.
- The part is made to order (at current market price).
- It can be replaced with an article on the market. (battery or etc.)
- It is a package or an accessory irrelevant to the function maintenance of the main body.
- A number of circuit boards are grouped together and supplied as a single circuit board (under a different part code).
- Reissuance is restricted.
- It is supplied as an assembled part (under a different part code).

Note: The parts marked # are new. (initial parts) The description "Q'ty" means a necessary number of the parts per one product.

CASING				
#	5100044170	CABINET		1
#	5100044172	JACK PLATE		1
CHASSIS				
#	5100044176	CASTER HOLDER		4
JACK, EXT TERMINAL				
	5100002620	6.5MM JACK	S2/BNB PC-C KINKED CL1169	1
SPEAKER, BUZZER				
#	5100044188	SPEAKER	W1016-049A	4
PWB ASSY				
#	5100048202	JACK BOARD ASSY		1
WIRING, CABLE				
#	5100044147	WIRING W1	1015#22-RED	4
#	5100044148	WIRING W2	1015#22-BLK	4
SCREWS				
	40012945	SCREW M3X6	PAN MACHINE W/SW+PW BZC	1
#	5100047173	SCREW M4X25	OVAL MACHINE NI	16
	40010390	SCREW M5X25	BINDING HEAD FE BZC	16
#	5100047172	SCREW 3X16	OVAL TAPPING A BZC	12
	5100033933	SCREW 3.5X16	TRUSS TAPPING A BZC	8
	5100043887	SCREW 3.5X16	TRUSS TAPPING A NI	16
	40677623	SCREW 4X16	TRUSS TAPPING A FE NI	16
	40010689	SCREW 4X25	TRUSS TAPPING A FE BZC	4
	40010690	SCREW 4X30	TRUSS TAPPING A FE BZC	18
#	5100044187	SCREW 4X35	TRUSS TAPPING A NI	16
	5100043897	PLAIN WASHER 4.2X10X1	NI (MC-10004-10311-MYC)	16
	5100041079	NAIL 1.4X16	SUS	2
MISCELLANEOUS				
#	5100044171	HANDLE		2
	5100041041	BADGE	LB-21035-4422A-000	1
	5100041038	CORNER COVER EK1081 NI	ME-21035-0610A-000	8
	5100041039	FOOT EK1206	MP-21035-47Q1A-000	4
#	5100044174	FOOT PLATE		2
#	5100044173	CAUTION PLATE		1
#	5100046748	LABEL SPEAKER MAGNET		4
	5100003695	TERMINAL	PCB-12	1
ACCESSORIES (Standard)				
#	5100049353	OWNER'S MANUAL	MULTILANGUAGE	1
#	5100044175	CASTER		4

Verifying the Version (BC-Tour(B))

Carry out verification in the **Test Mode (BC-Tour(B))** (p. 26).

Data Backup and Restore Operations (BC-Tour(B))

This product cannot save user data. Backing up user data during servicing is not required.

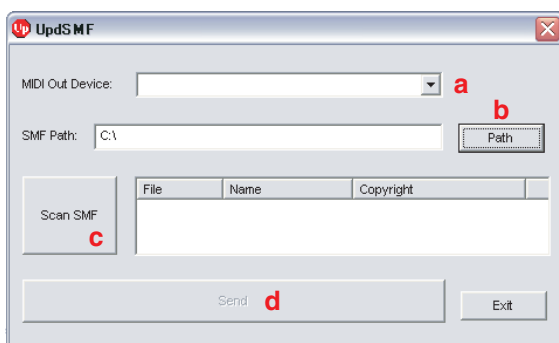
System Update Procedure (BC-Tour(B))

Items Required

- Computer (running Windows)
 - USB cable
 - Driver for BC-ARTIST/STAGE
- * Obtain this from the following web pages, and install it on the computer just described.
- <http://www.roland.co.jp/>
<http://www.roland.com/>
- Update program (obtained via Service Net)
 - UpdSMF.exe (obtained via Service Information No. 102333.)

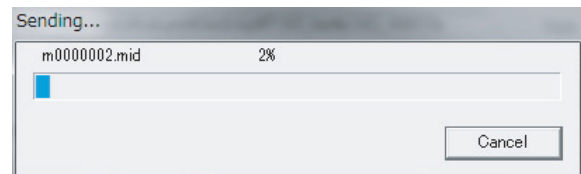
Procedure

1. Using the USB cable, connect the computer to the **REC OUT** connector.
2. Turn all knobs all the way counterclockwise.
3. Hold down **CH SELECT**, **DUAL TONE** and **CRUNCH TONE** and switch on the power.
All LEDs flash rapidly several times, and then **CLEAN**, **CLEAN BOOST**, **CLEAN TONE**, **CRUNCH BOOST** and **CRUNCH TONE** light up.
4. Run UpdSMF.exe.



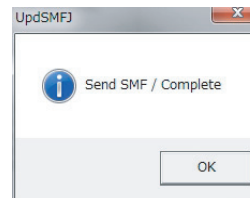
5. Click the drop-down menu (a) and select **Blues Cube Artist**.
6. Click **Path** (b), then select the folder containing the update program (SMF).
7. Click **Scan SMF** (c).
The update program (SMF) appears.

8. Click **Send** (d).
Sending of the update program starts.



While sending is in progress, the **CLEAN** LED flashes.

- * Even if the following display appears, the update does not finish yet. Never switch off the power to the computer or disconnect the USB cable.



9. Click **OK** and wait for while.
When **CLEAN**, **CLEAN BOOST**, **CLEAN TONE**, **CRUNCH BOOST** and **CRUNCH TONE** flash slowly, the update has finished.

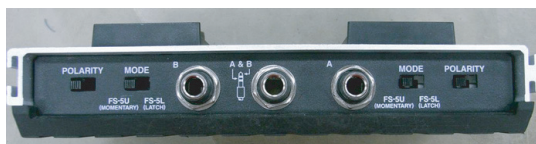
Test Mode (BC-Tour(B))

Items Required

- FS-5U (x 2) or FS-6 (x 1)
 - Y cable (stereo 1/4-inch phone <-> monoaural 1/4-inch phone x 2) or Stereo 1/4-inch phone cable
 - Dummy plug
 - Stereo 1/4-inch phone cable
 - GA-FC
 - Computer (running Windows)
 - USB cable
 - MIDI device
- Driver for BC-ARTIST /STAGE
- * Obtain this from the following web pages, and install it on the computer just described.
- <http://www.roland.co.jp/>
<http://www.roland.com/>
- * Set the POLARITY switch and the MODE switch on the foot switch as shown below.



FS-5U



FS-6

Entering the Test Mode

1. Turn all knobs all the way counterclockwise.
2. Hold down **CLEAN BOOST** and **CRUNCH BOOST** and switch on the power.

When the unit enters the test mode, the **CLEAN** LED flashes and execution is transferred to **Verifying the Version** (p. 26).

Quitting the Test Mode

Switch off the power.

Skipping Test Items

Test items cannot be skipped.

Verifying the Version

As shown in the table below, **CLEAN BOOST**, **CLEAN TONE** and **CRUNCH BOOST** light up or go dark to display the version.

Version	CLEAN BOOST	CLEAN TONE	CRUNCH BOOST
1.00	o	-	-
1.01	-	o	-
1.02	-	-	o
1.03	o	o	-
1.04	o	-	o
1.05	-	o	o

o: lights, -: dark

Press **CH SELECT** to advance to the next test item.

Device Check

The **CLEAN LED**, **CLEAN BOOST**, **CLEAN TONE**, the **CRUNCH LED**, **CRUNCH BOOST** and **CRUNCH TONE** light up.

Devices shown in the table below are checked in sequence from top to down, and if no problem is found, the corresponding LED goes dark.

When not OK, the corresponding LED flashes rapidly and other devices are not checked and testing stops.

Device	Circuit Board	LED
Serial Flash	Main Board	CLEAN BOOST
SDRAM	Main Board	CLEAN TONE
DSP IRAM 0/1	Main Board	CRUNCH TONE
DSP PRAM 0/1	Main Board	CRUNCH BOOST
DSP ERAM	Main Board	CRUNCH
Heat Sensor	PTC-A/B Board	CLEAN
R546	Amp Board	

* The last item in the table above means checking R546 on Amp Board is installed or not. R546 is installed on the Amp Board of BC-STAGE and it is not installed on the Amp Board of the BC-ARTIST and BC-Tour(B). Refer to **Circuit Diagram (BC-Tour(B) Amp Board: 1/2)** (p. 40).

* If either Heat Sensor or R546 is not OK, the **CLEAN LED** flashes rapidly.

If all devices are OK, execution automatically advances to the next test item.

LED Inspection

1. Verify that the **CLEAN LED**, **CLEAN BOOST**, **CLEAN TONE**, the **CRUNCH LED**, **CRUNCH BOOST**, **CRUNCH TONE**, **EFX LOOP A** and **EFX LOOP B** light up.
2. Verify that the **POWER LED** lights up and repeats in this sequence: red, green, blue.
3. Press **CH SELECT** to advance to the next test item.

Switch Inspection

The status of the LEDs at the top line of the table below is as Initial state.

Press buttons in numerical order shown in the table below and verify that the status of the corresponding LEDs.

* If the buttons are pressed in the wrong order, if two or more buttons were pressed at the same time or if the test result is not OK, execution does not advance to the next item.

	CRUNCH	CLEAN BOOST	CLEAN TONE	CRUNCH BOOST	CRUNCH TONE	EFX LOOP A	EFX LOOP B
Initial state	*	o	o	o	o	o	o
1 DUAL TONE	-	*	o	o	o	o	o
2 CLEAN BOOST	-	-	*	o	o	o	o
3 CLEAN TONE	-	-	-	*	o	o	o
4 CRUNCH BOOST	-	-	-	-	*	o	o
5 CRUNCH TONE	-	-	-	-	-	*	o
6 EFX LOOP A	-	-	-	-	-	-	*
7 EFX LOOP B	-	-	-	-	-	-	-

o: lights, -: goes off, *: flashes

When all buttons shown in the table have been pressed, **CLEAN TONE** lights up and execution automatically advances to the next test item.

Volume Control Inspection

1. Turn the following knobs of (1)–(12) minimum-center-maximum in numerical order and verify that the status of the LEDs shown in the table below.

* After detecting the minimum and maximum value, test program advances to the test of the next knob.

- (1) CLEAN VOLUME
- (2) BASS (left)
- (3) MIDDLE (left)
- (4) TREBLE (left)
- (5) CRUNCH GAIN
- (6) CRUNCH VOLUME
- (7) BASS (right)
- (8) MIDDLE (right)
- (9) TREBLE (right)
- (10) REVERB
- (11) PRESENCE
- (12) MASTER

Knob position	CLEAN TONE	CLEAN BOOST	CRUNCH BOOST	CRUNCH TONE
Minimum	o	-	-	-
Minimum – Center	o	o	-	-
Center – Maximum	o	o	o	-
Maximum	o	o	o	o

o: lights, -: dark

When all knobs has been rotated, execution automatically advances to the next test item.

Rotary Switch Inspection

Slowly turn the **POWER CONTROL** knob one click at a time, and verify that the status of the LEDs shown in the table below.

* If the knob is turned either too fast or in the opposite direction, the corresponding LED at the location checked finally flashes rapidly. In this case, returning the knob to that position clears the error.

Knob position	CLEAN TONE	CLEAN BOOST	CRUNCH BOOST	CRUNCH TONE
0.5 W	o	-	-	-
15 W	o	o	-	-
45 W	o	o	o	-
MAX	o	o	o	o
45 W	o	o	o	-
15 W	o	o	-	-
0.5 W	o	-	-	-

o: lights, -: dark

When the knob has been rotated, execution automatically advances to the next test item.

Jack Sense and Foot Switch Inspection

The status of the LEDs at the top line of the table below is as Initial state.

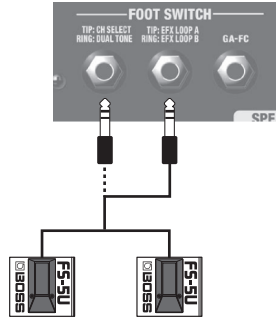
Carry out operations shown in the table below in numerical order and verify that the status of the corresponding LEDs.

* FS1 and FS2 shown in the table mean the following jacks.

FS1: The left jack of three **FOOT SWITCH**es (TIP: CH SELECT, RING: DUAL TONE)

FS2: The center jack of three **FOOT SWITCH**es (TIP: EFX LOOP A, RING: EFX LOOP B)

* At "Insert the plug at FS1" or "Insert the plug at FS2", connect FS-5Us (or an FS-6) as shown in the figure below.



* If you're using PCS-31 for Y cable, white is for TIP and red is for RING. And if you're using 1/4-inch stereo phone cable to connect FS-6, **A** is for RING and **B** is for TIP.

	CLEAN	CLEAN BOOST	CLEAN TONE	CRUNCH	CRUNCH BOOST	CRUNCH TONE
Initial state	*	o	o	o	o	-
1 Insert the dummy plug at INPUT HIGH.	o	o	o	o	o	-
2 Disconnect the dummy plug from INPUT HIGH.	-	*	o	o	o	-
3 Insert a dummy plug at EFX LOOP A RETURN.	-	o	o	o	o	-
4 Disconnect the dummy plug from EFX LOOP A RETURN.	-	-	*	o	o	-
5 Insert a dummy plug at EFX LOOP B RETURN.	-	-	o	o	o	-
6 Disconnect the dummy plug from EFX LOOP B RETURN.	-	-	-	*	o	-
7 Insert the dummy plug at PHONES.	-	-	-	o	o	-
8 Disconnect the dummy plug from PHONES.	-	-	-	-	*	-
9 Switch the IMP. SELECT switch.	*	o	o	o	o	o
10 Insert the plug at FS1.	o	*	o	o	o	o
11 Press and hold the pedal for the tip of FS1.	o	o	o	o	o	o
12 Release the pedal for the tip of FS1.	o	-	*	o	o	o
13 Press and hold the pedal for the ring of FS1.	o	-	o	o	o	o
14 Release the pedal for the ring of FS1.	*	-	-	o	o	o
15 Disconnect the plug from FS1.	-	-	-	*	o	o
16 Insert the plug at FS2.	-	-	-	o	*	o
17 Press and hold the pedal for the tip of FS2.	-	-	-	o	o	o
18 Release the pedal for the tip of FS2.	-	-	-	o	-	*
19 Press and hold the pedal for the ring of FS2.	-	-	-	o	-	o
20 Release the pedal for the ring of FS2.	-	-	-	*	-	-
21 Disconnect the plug from FS2.	-	-	-	-	-	-

o: lights, -: goes off, *: flashes

When all operations have finished, execution automatically advances to the next test item.

GA-FC Inspection

EFX LOOP B flashes.

Carry out operations shown in the table below in numerical order and verify that the status of the corresponding LEDs.

* At "Connect the GA-FC" in the table below, using a 1/4-inch stereo phone cable, connect **FOOT SWITCH GA-FC** jack of the BC-ARTIST and **GA FOOT CONTROL** jack of the GA-FC.

	BC-TOUR(B)	GA-FC	
	EFX LOOP B	FUNCTION	MANUAL, CH 1-4
Initial state	*	-	-
1 Connect the GA-FC.	o	*	o
2 Press the FUNCTION of GA-FC.	*	*	*
3 Disconnect the GA-FC.	-	-	-

o: lights, -: goes off, *: flashes

When the GA-FC has been disconnected, execution automatically advances to the next test item.

USB Inspection

The **POWER** LED flashes in white.

1. Connect the computer to the **REC OUT** connector.
The **POWER** LED lights up white.
2. Detach the computer.
Execution automatically advances to the next test item.

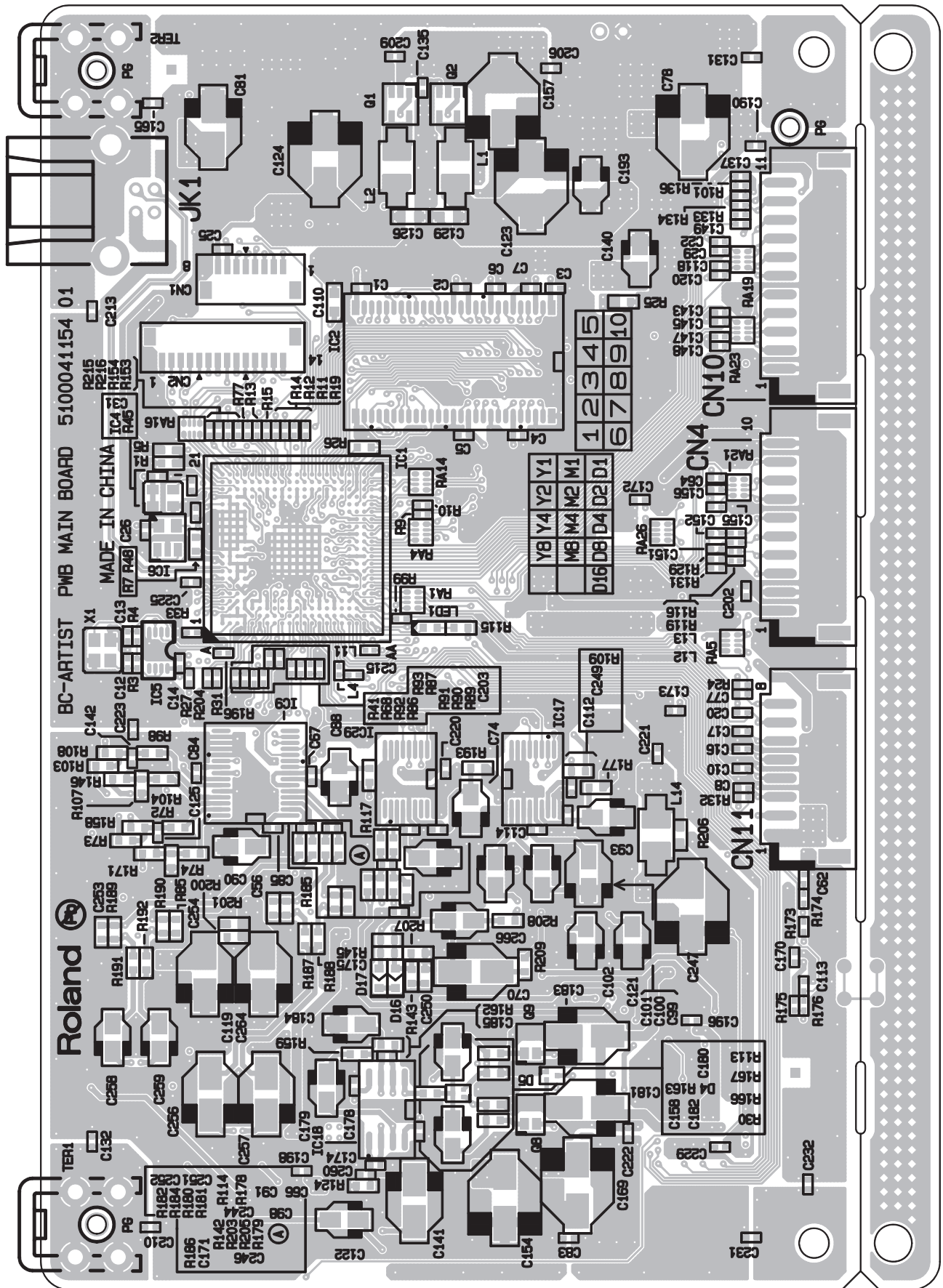
MIDI IN Inspection

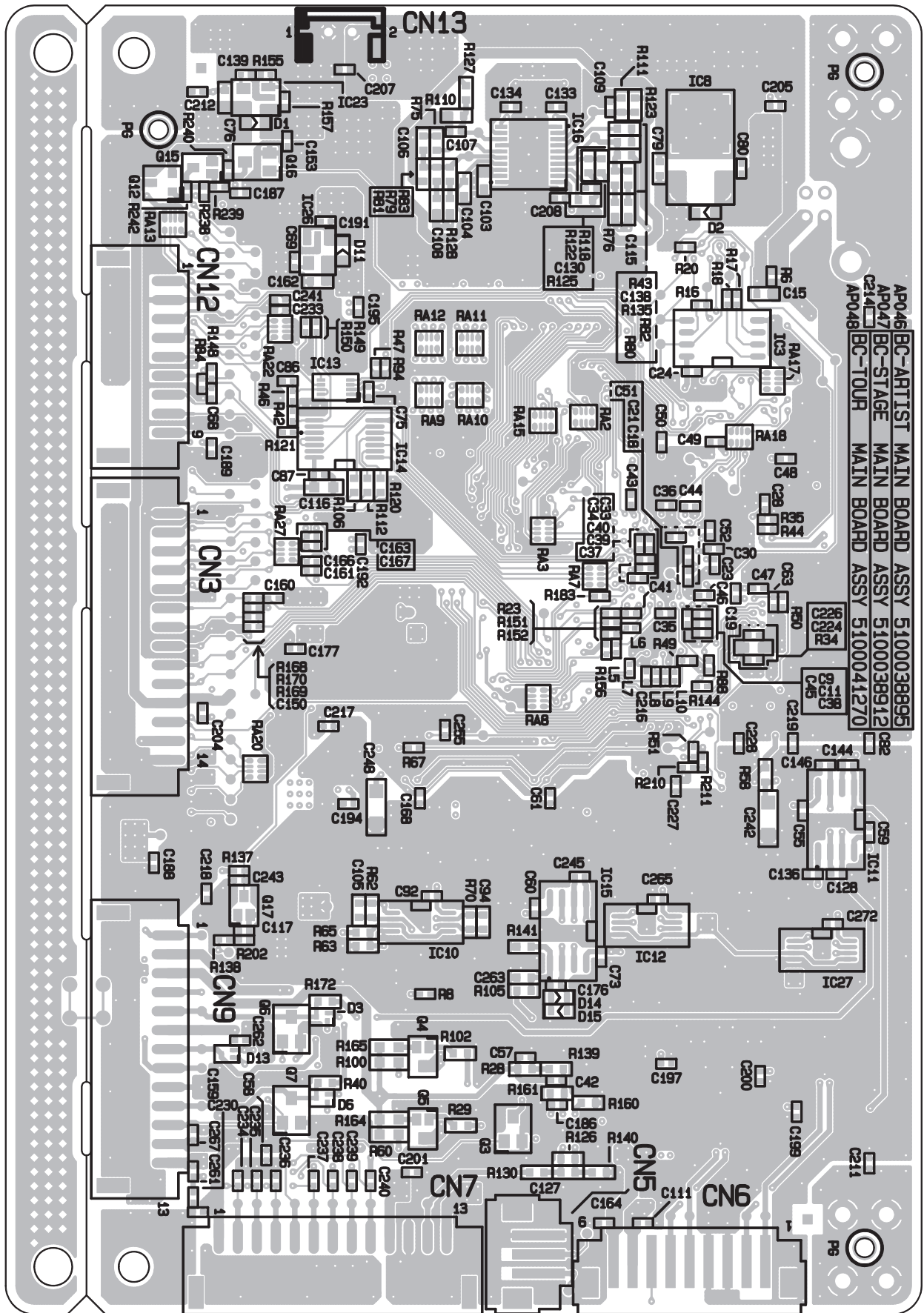
The **POWER** LED flashes green.

1. Using the MIDI cable, connect the **MIDI IN** connector and the **MIDI OUT** connector on the MIDI device.
The **POWER** LED lights up green.
2. Detach the MIDI device.
The **POWER** LED lights up red.

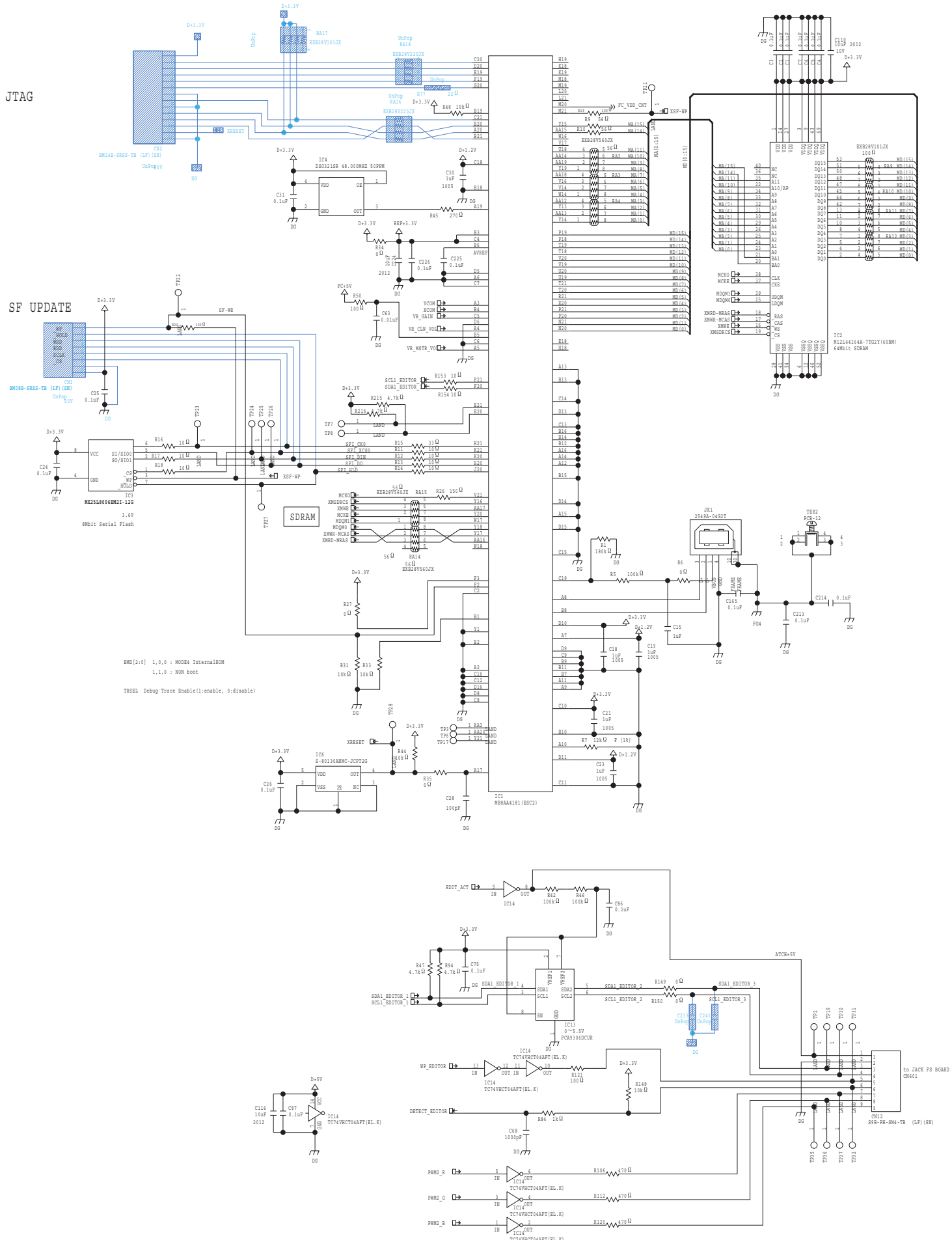
This concludes the testing. Switch off the power.

Circuit Board (BC-Tour(B) Main Board)

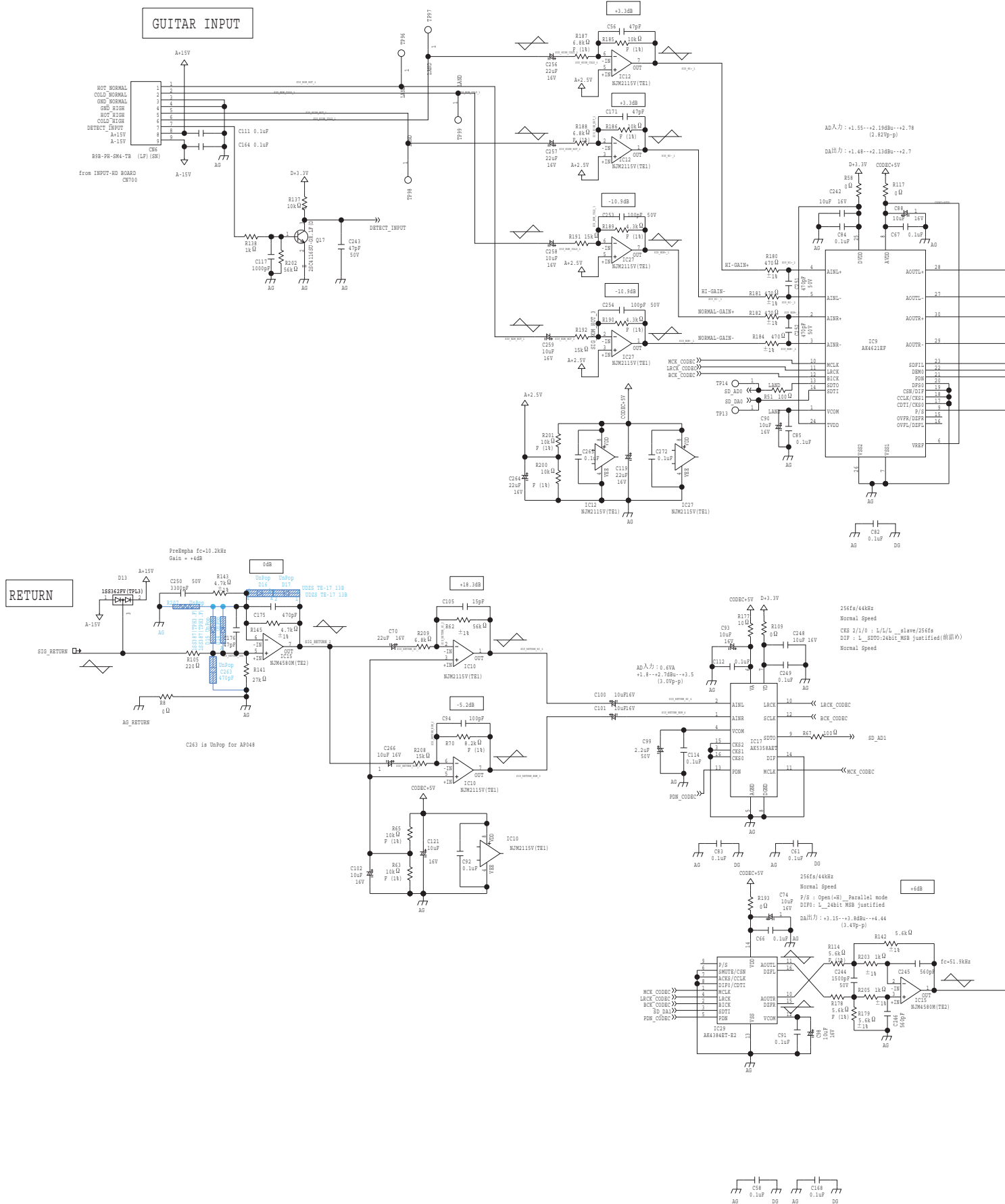


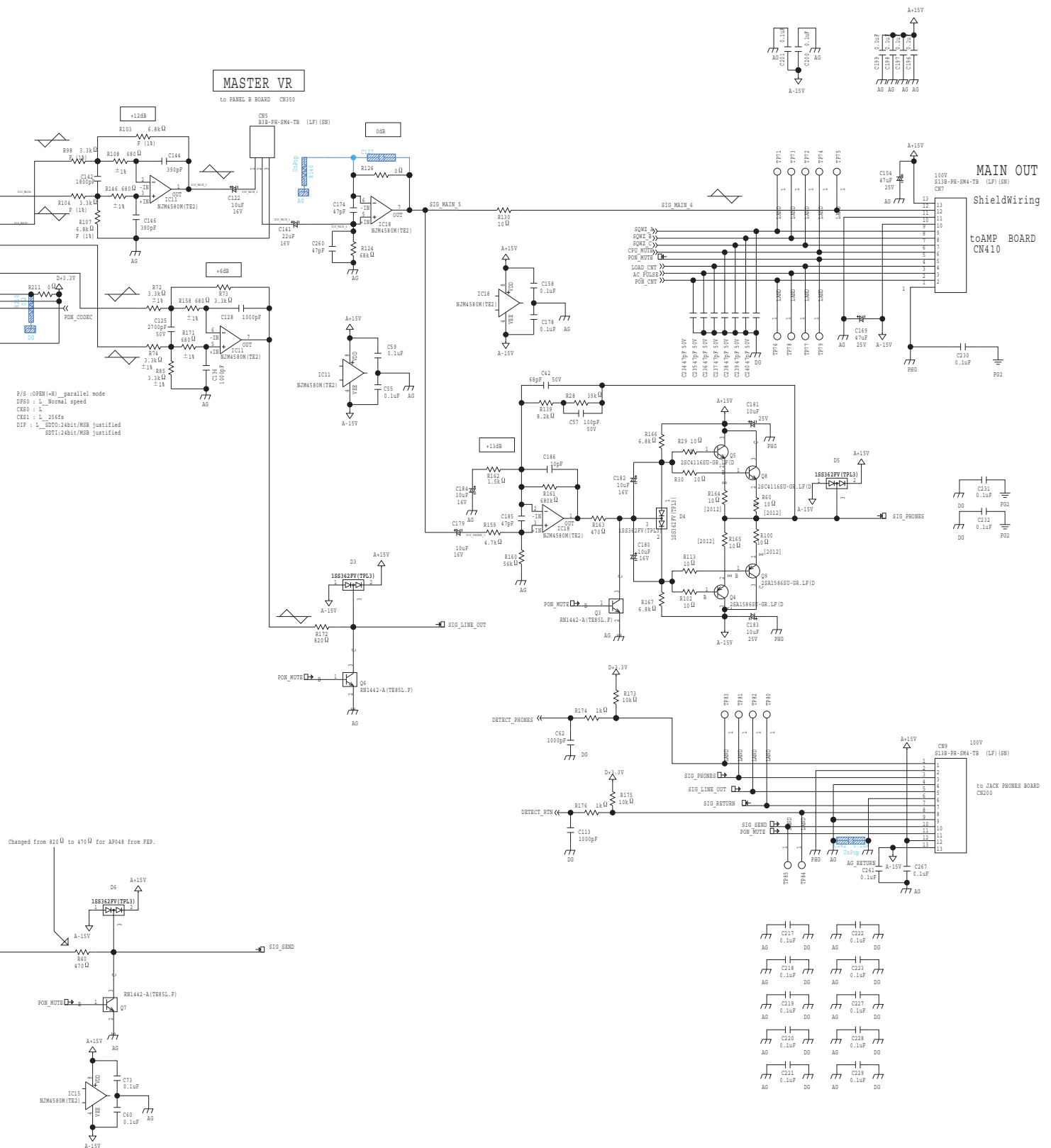


Circuit Diagram (BC-Tour(B) Main Board: 1/3)

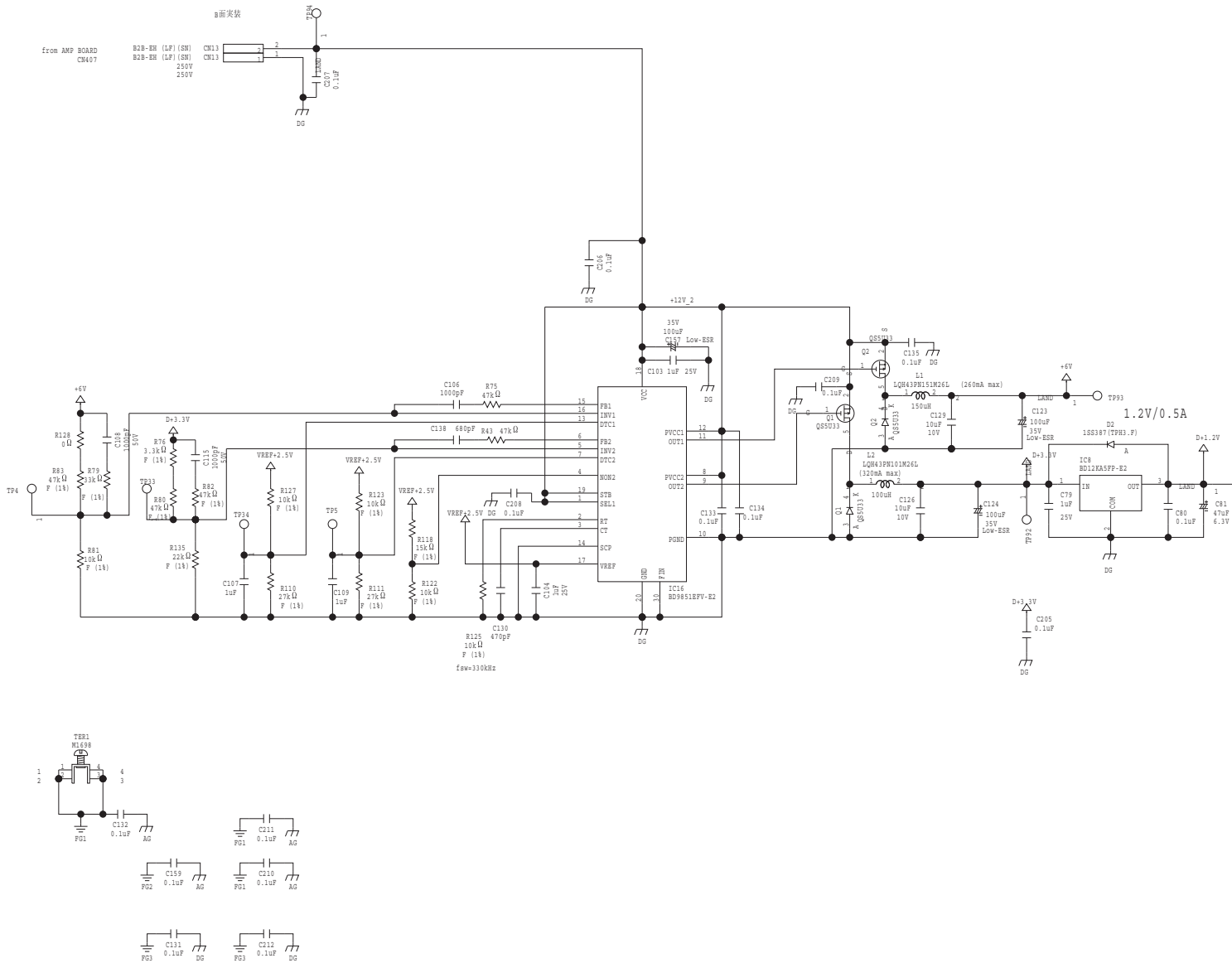


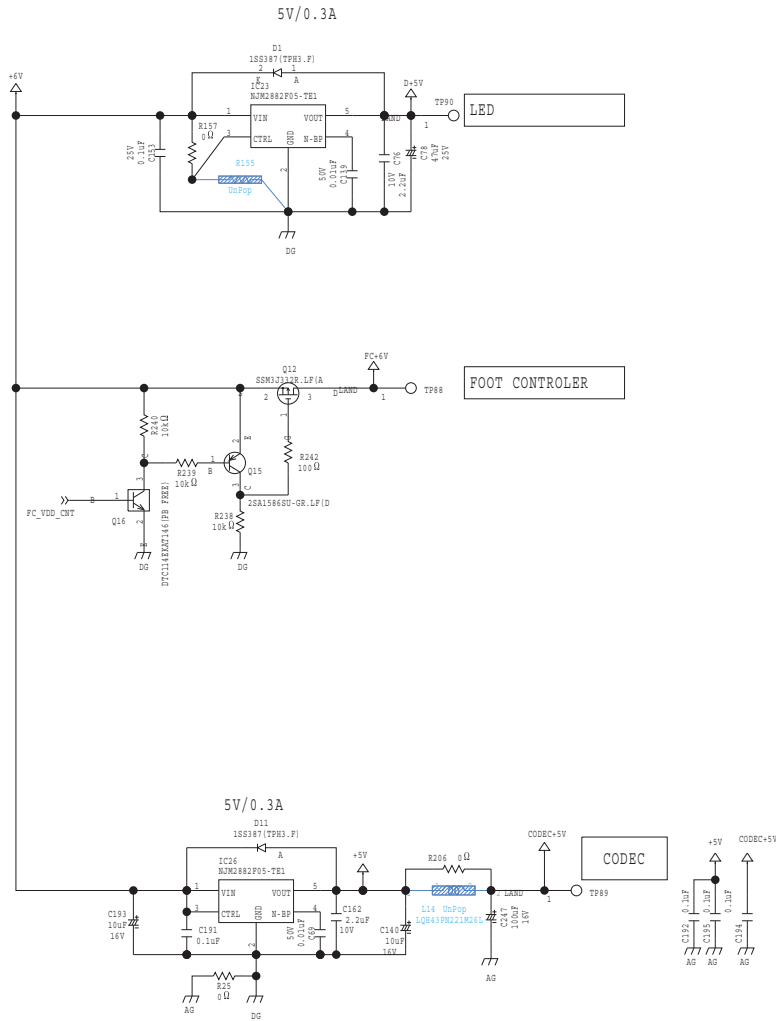
Circuit Diagram (BC-Tour(B) Main Board: 2/3)



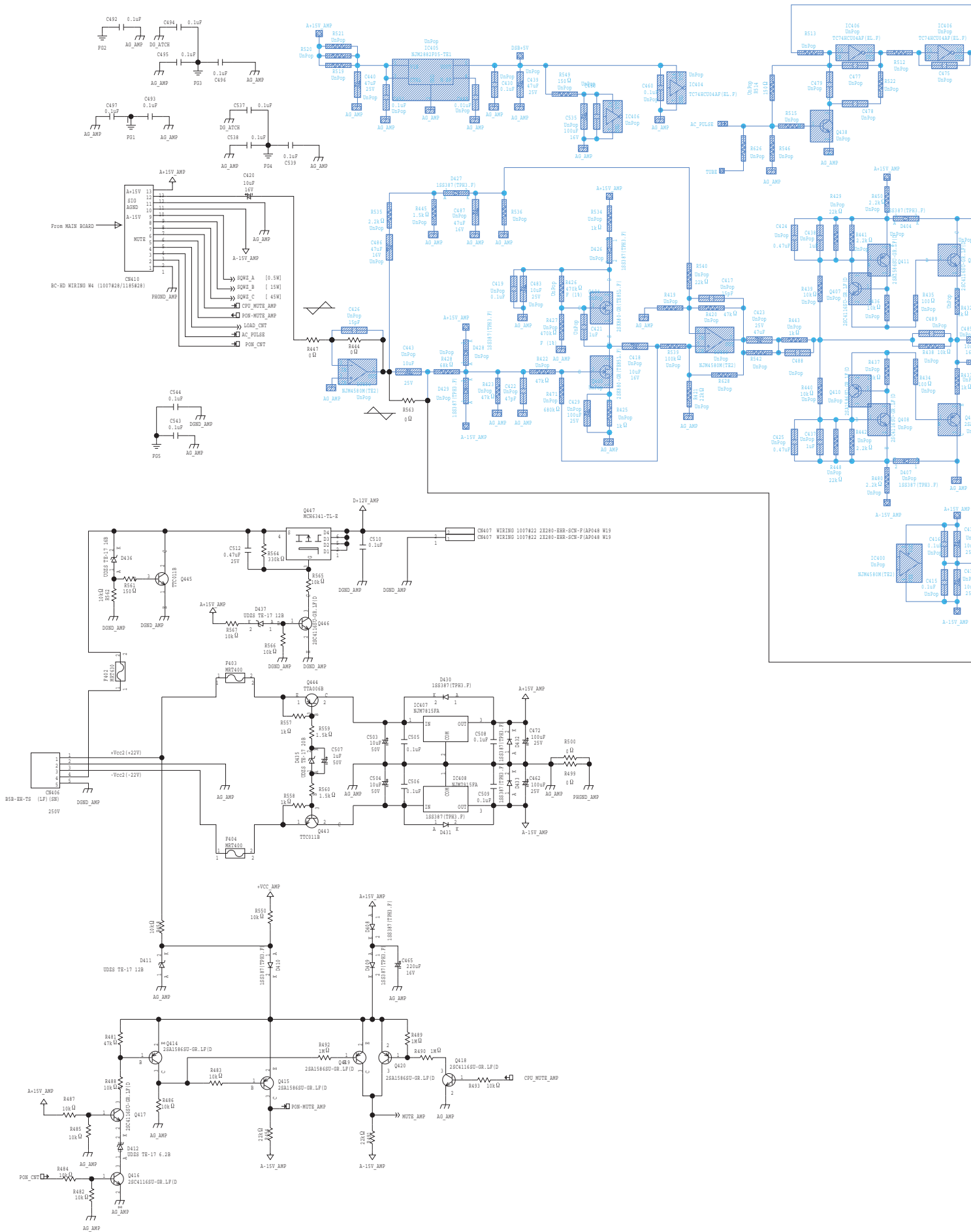


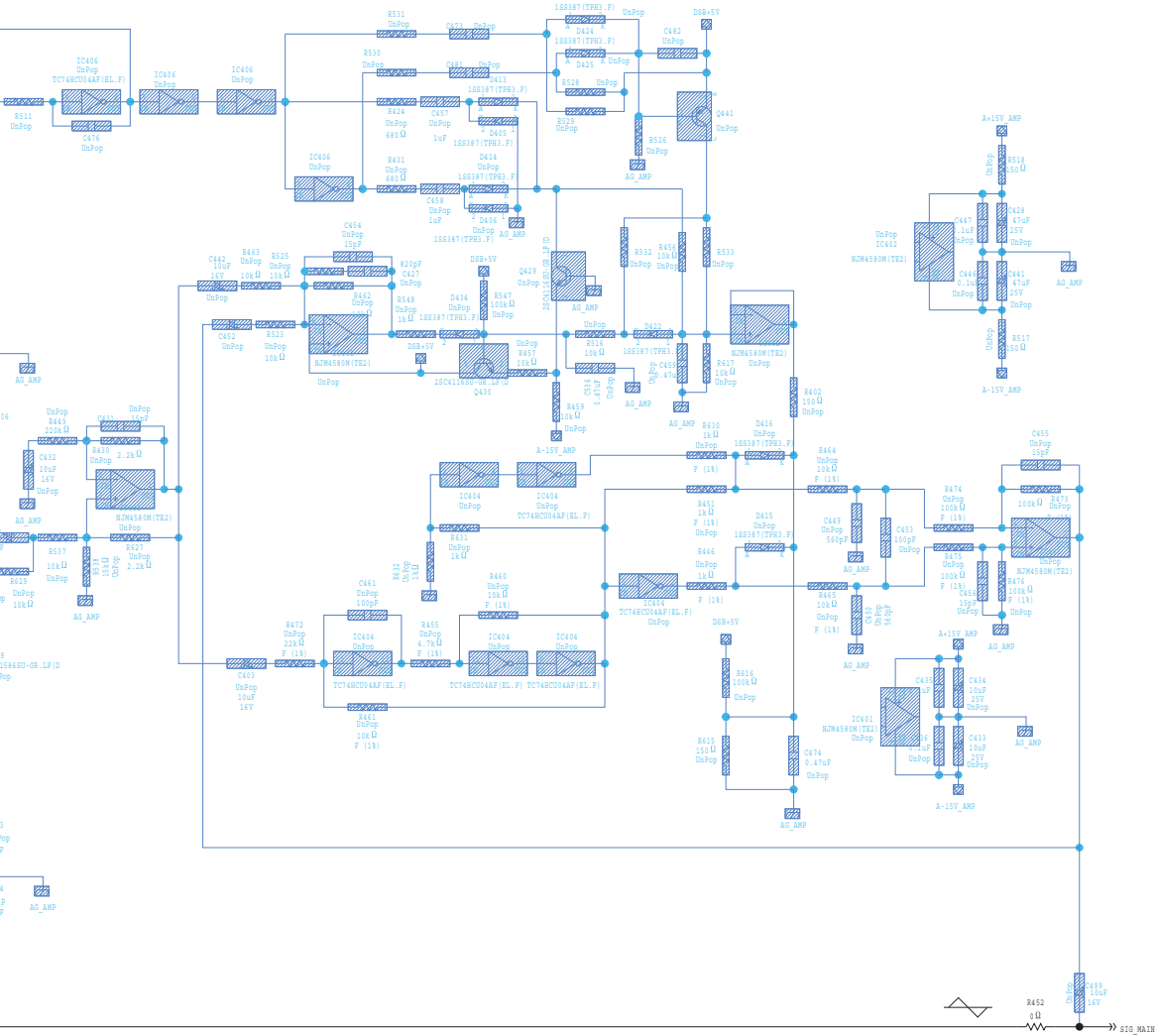
Circuit Diagram (BC-Tour(B) Main Board: 3/3)



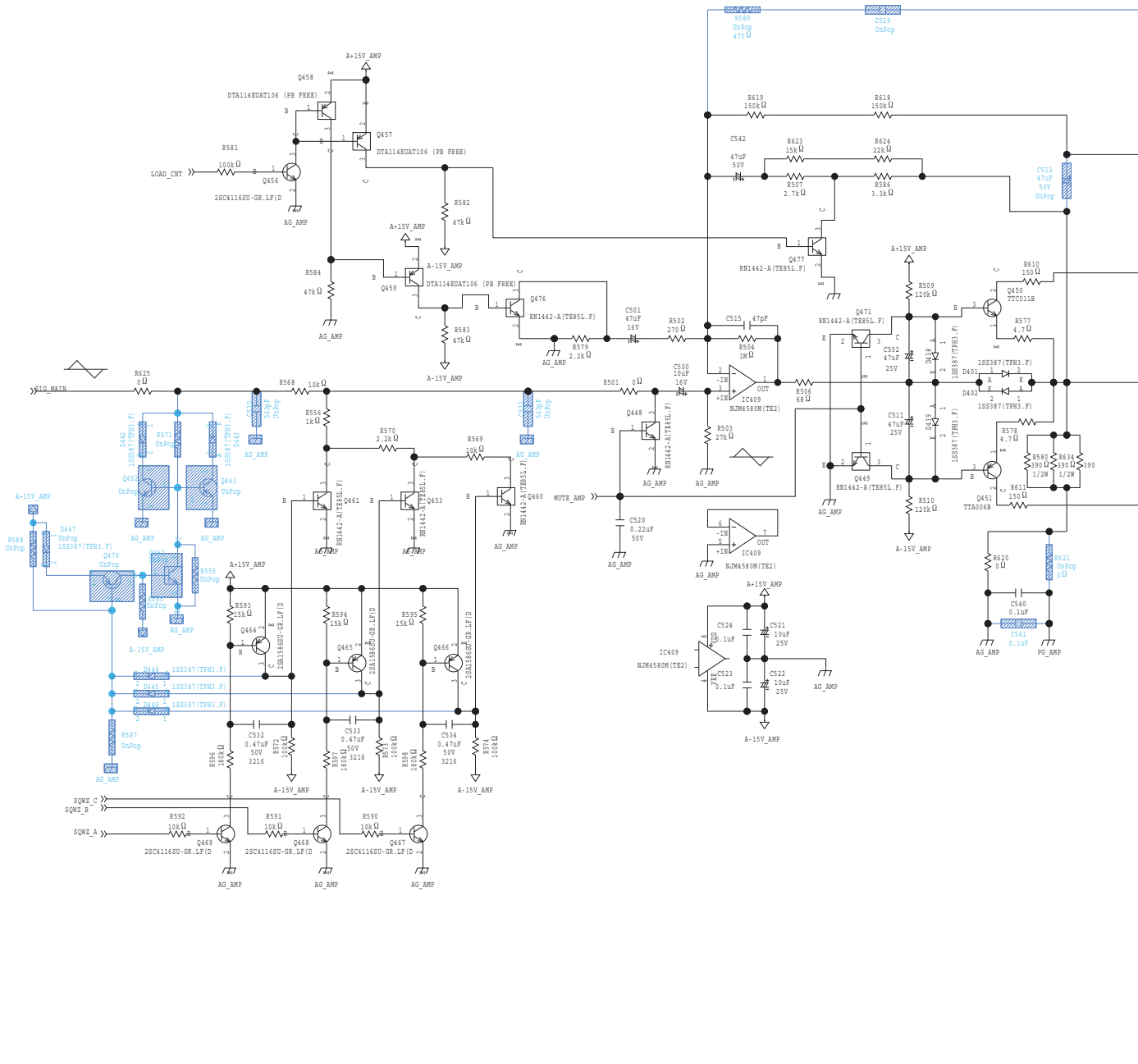


Circuit Diagram (BC-Tour(B) Amp Board: 1/2)

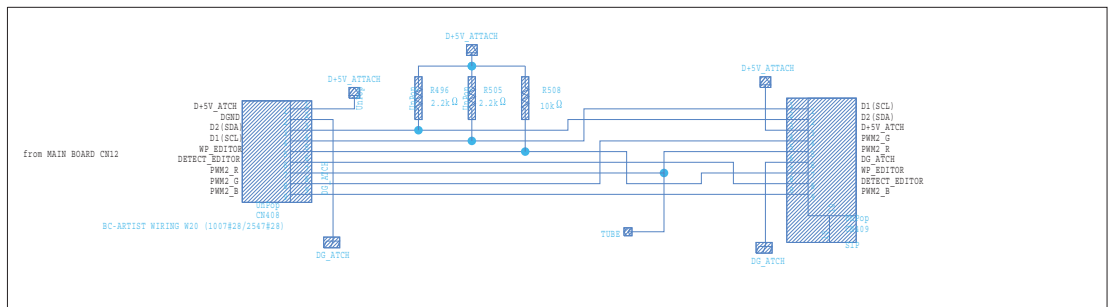


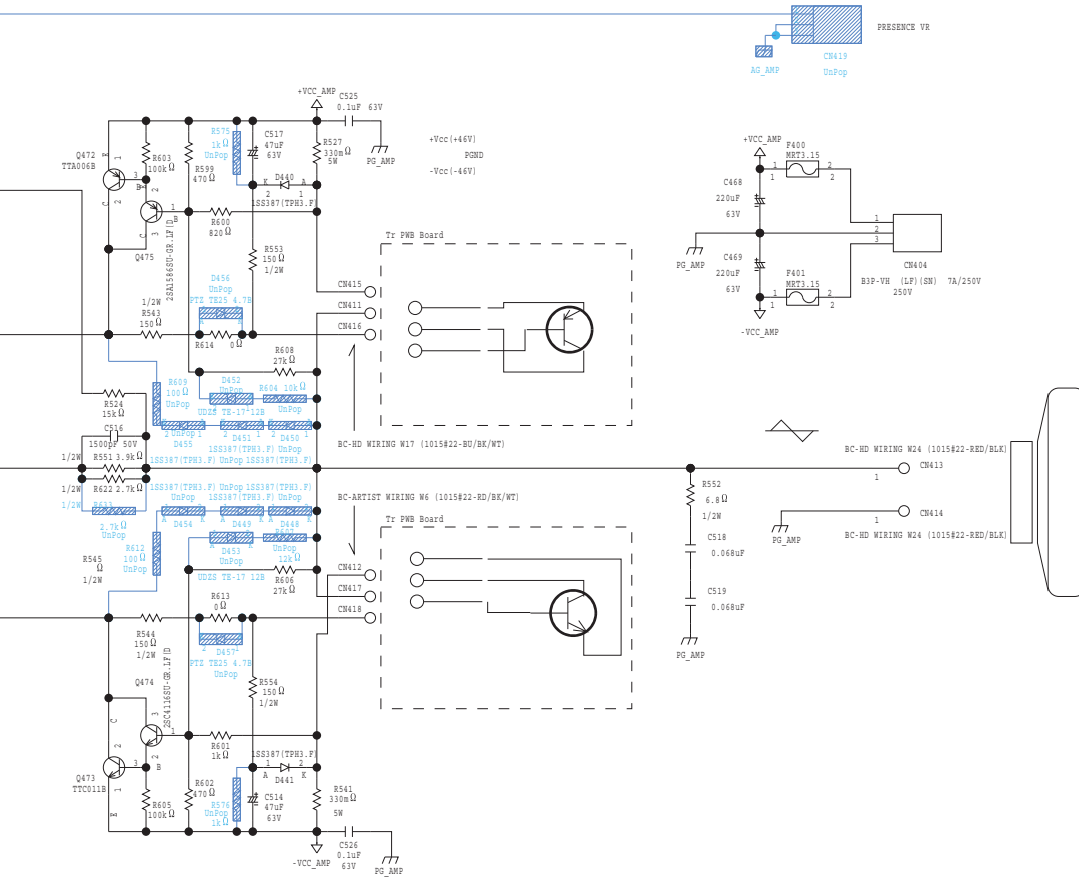


Circuit Diagram (BC-Tour(B) Amp Board: 2/2)

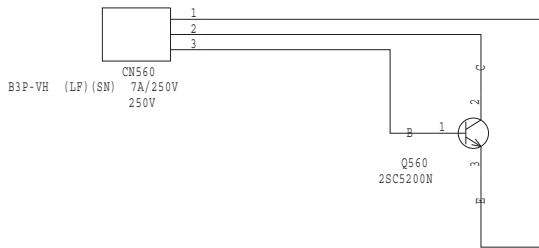


This Area is Unpop for BC-TOUR(B)

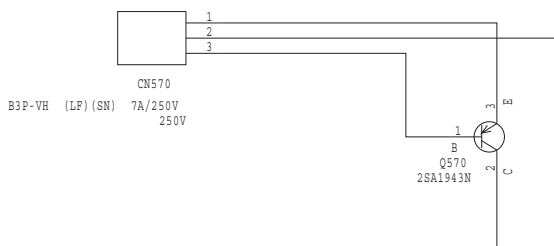




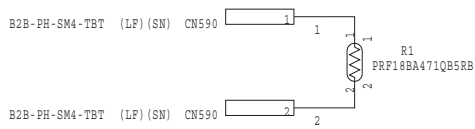
Circuit Diagram (BC-Tour(B) Ptr-N Board)



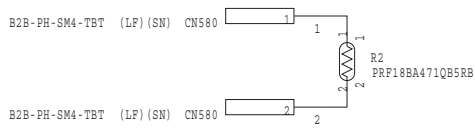
Circuit Diagram (BC-Tour(B) Ptr-P Board)



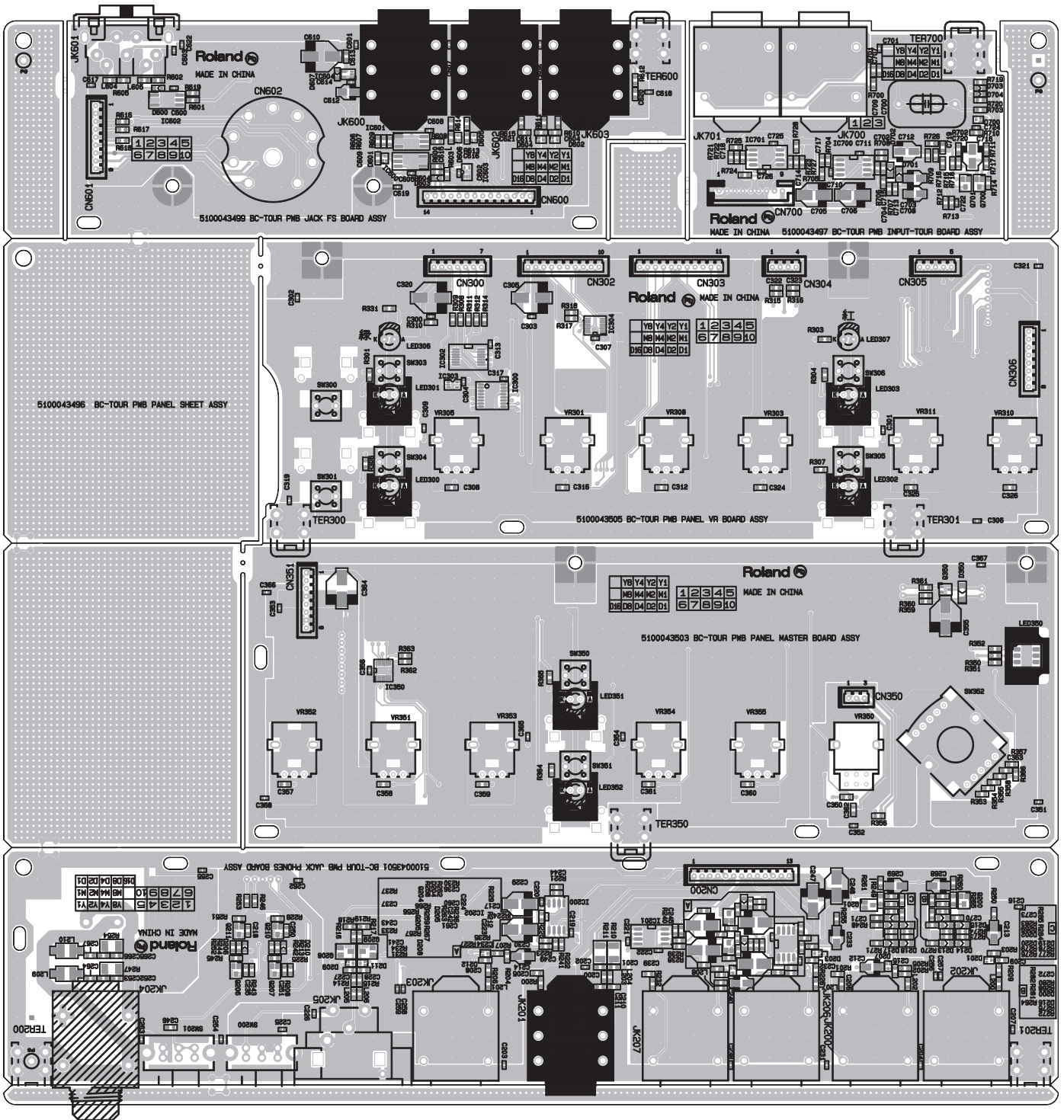
Circuit Diagram (BC-Tour(B) Ptc-A Board)

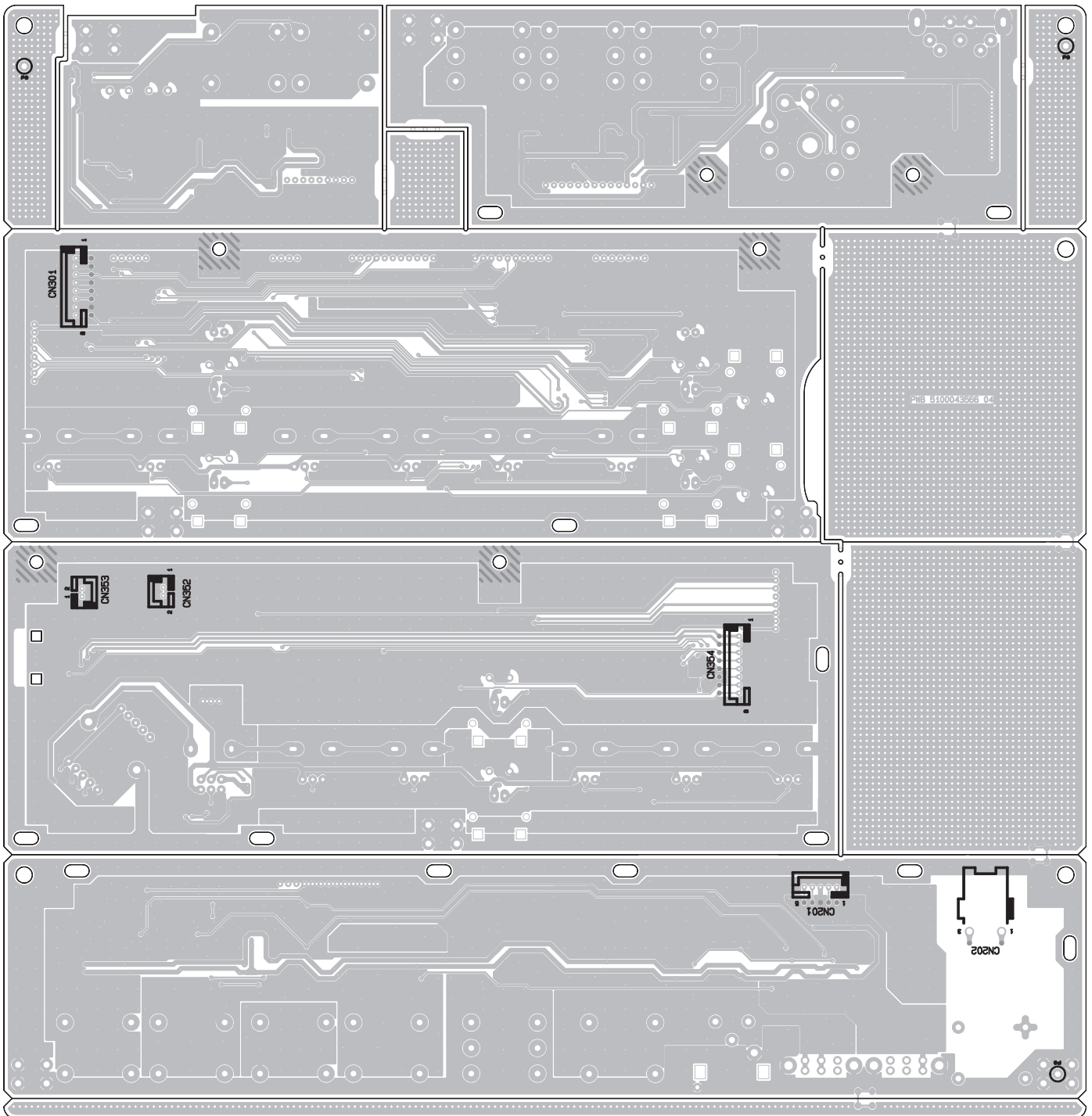


Circuit Diagram (BC-Tour(B) Ptc-B Board)

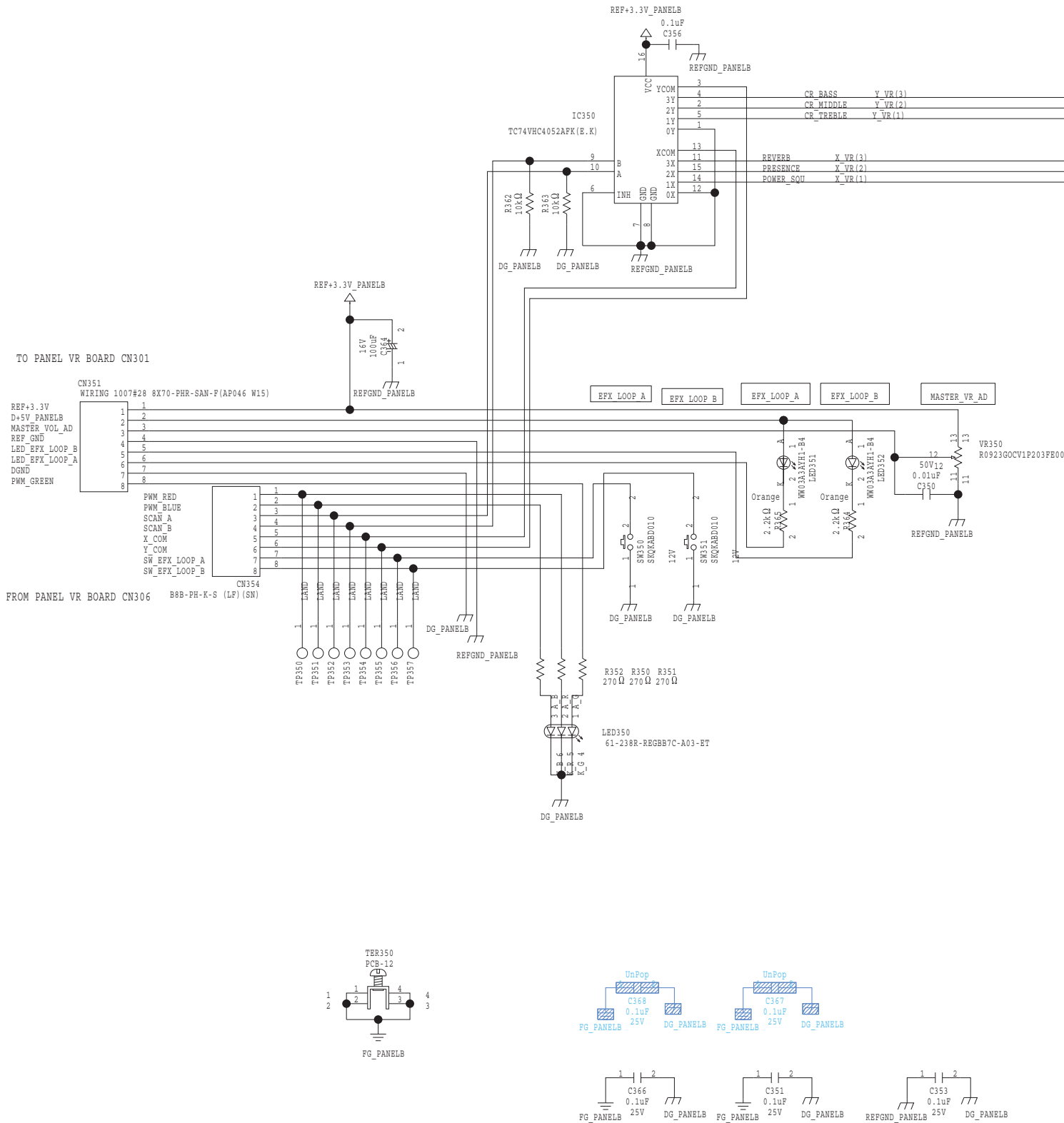


Circuit Board (BC-Tour(B) Panel Master, Panel VR, Jack Phones, Jack FS, Input Tour Board)

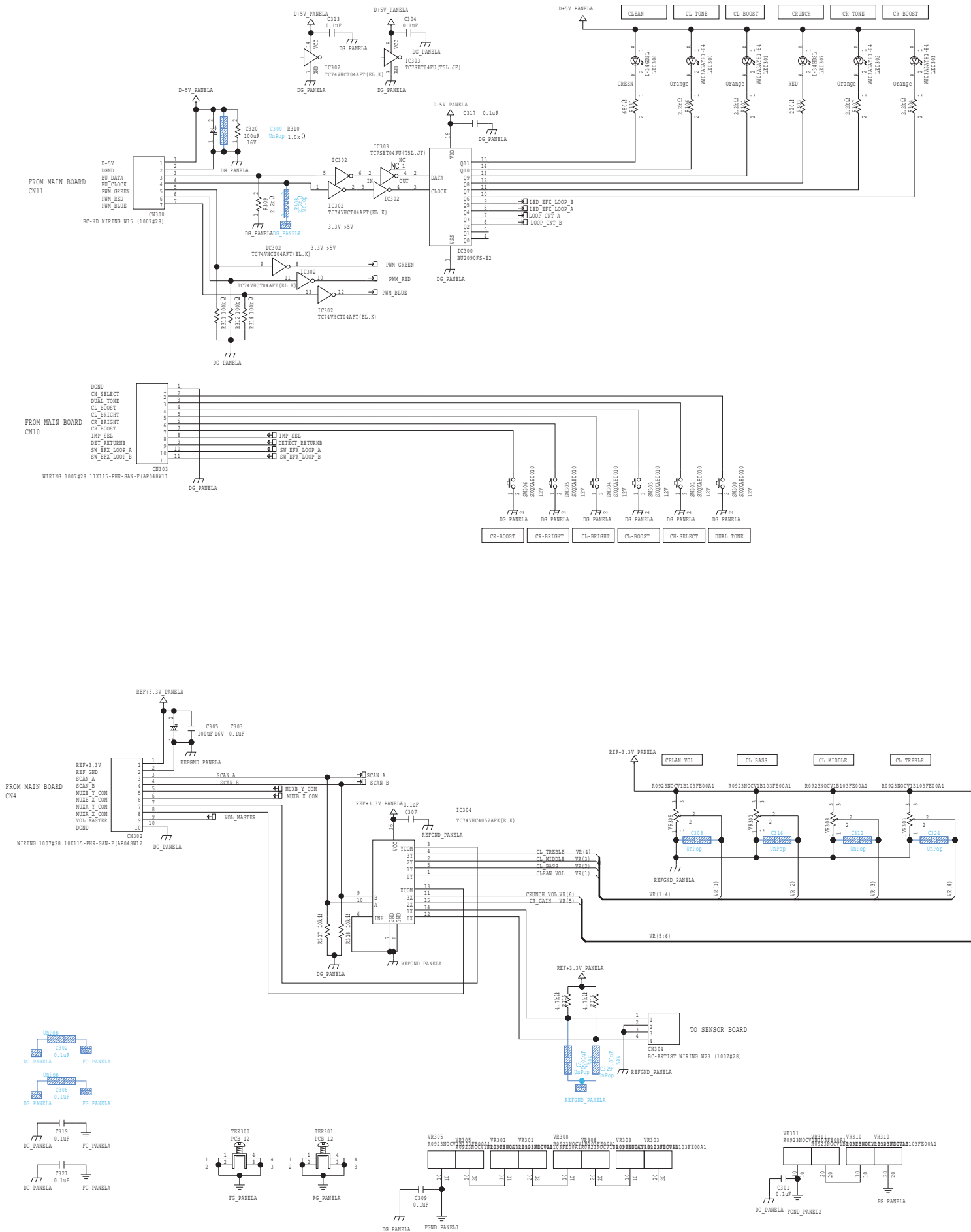


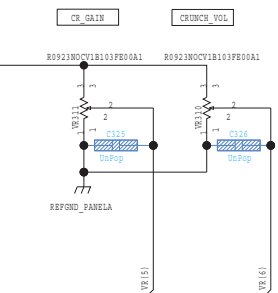
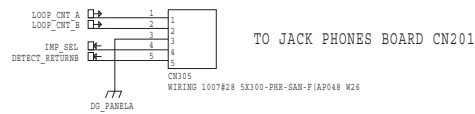
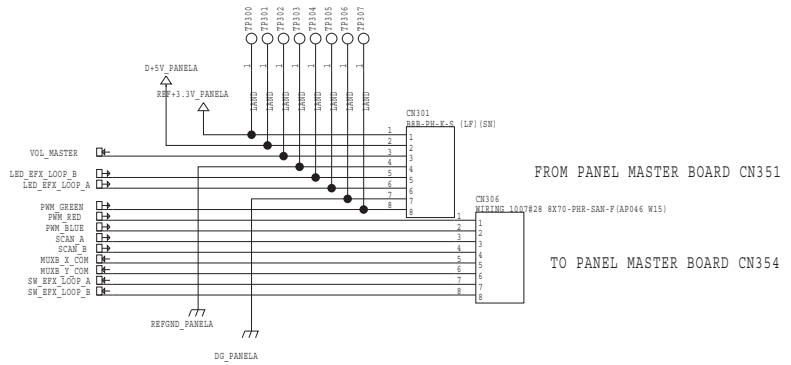


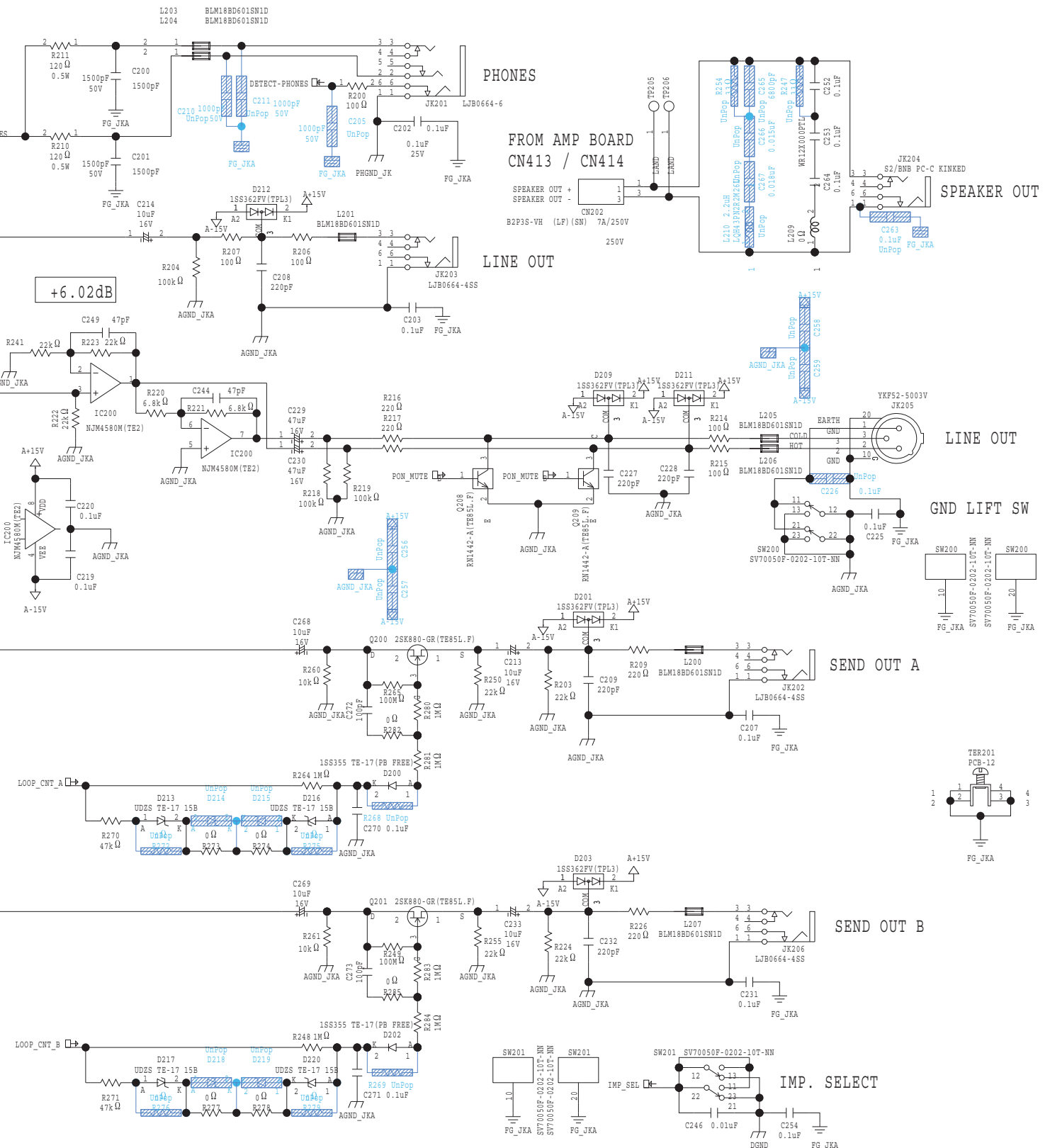
Circuit Diagram (BC-Tour(B) Panel Master Board)



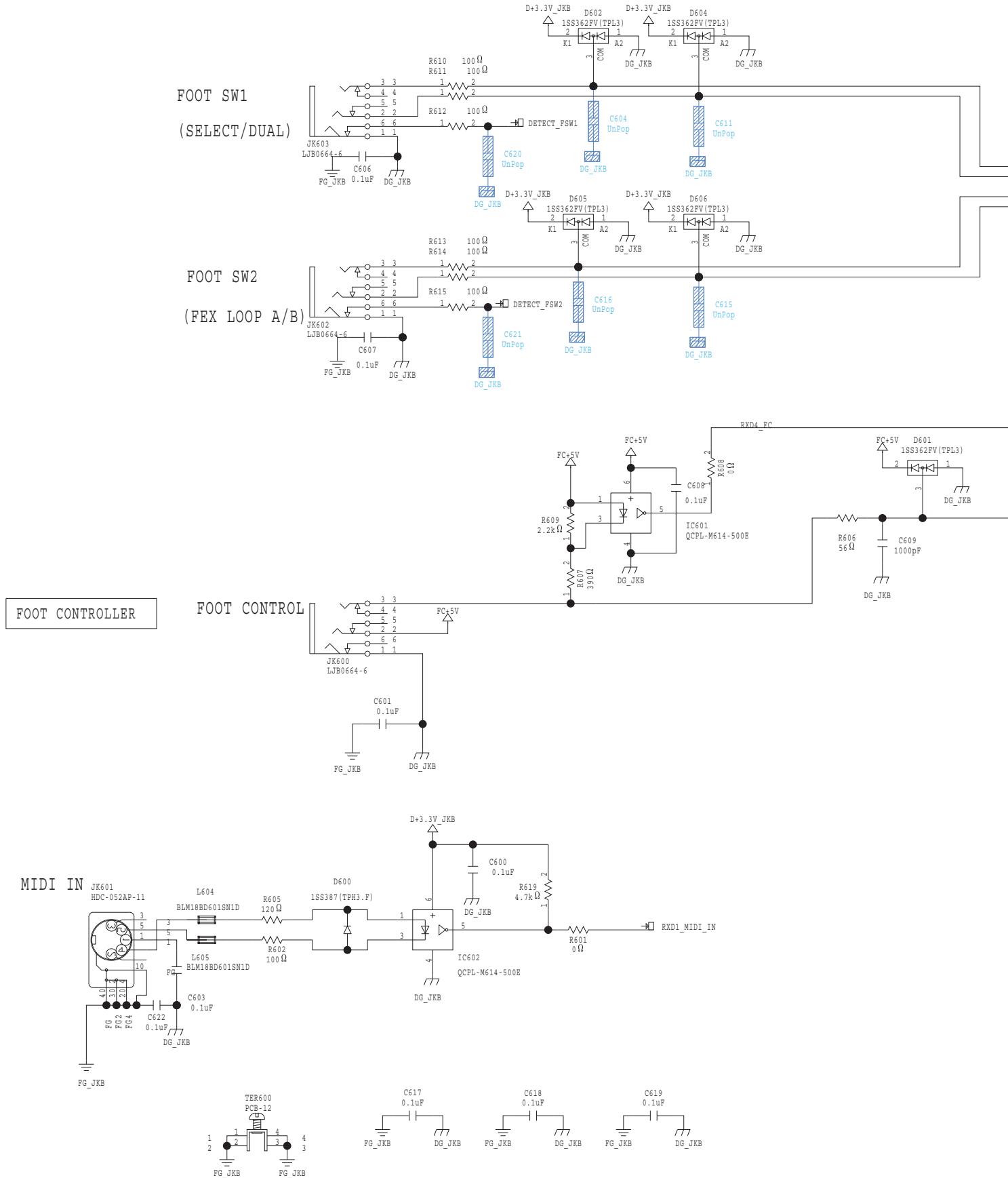
Circuit Diagram (BC-Tour(B) Panel VR Board)

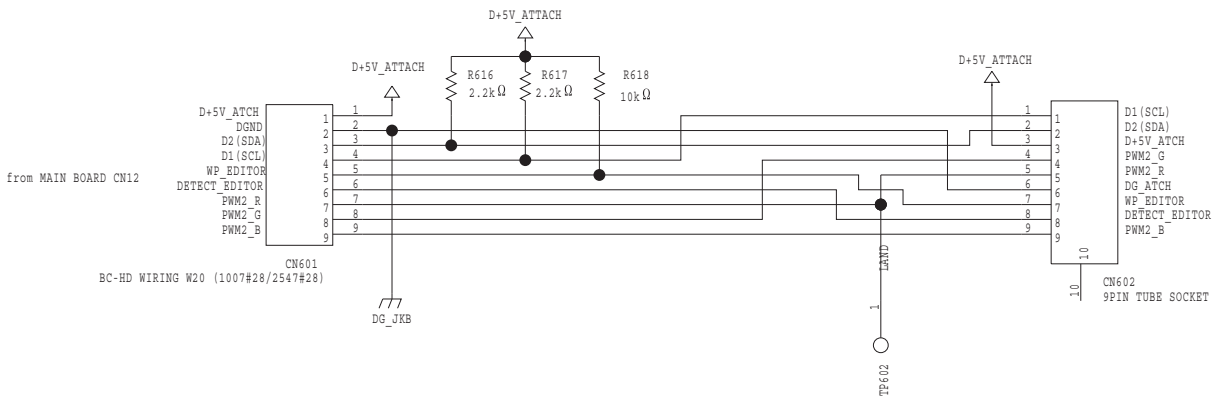
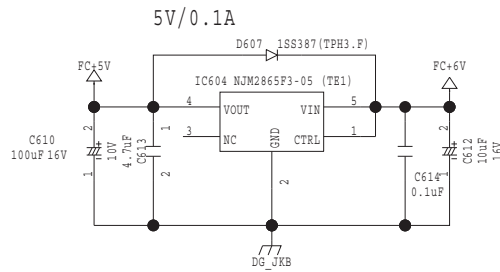
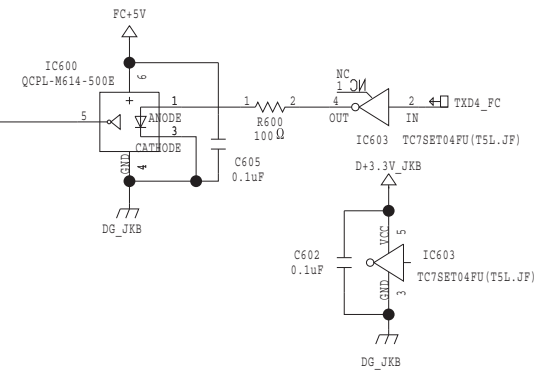
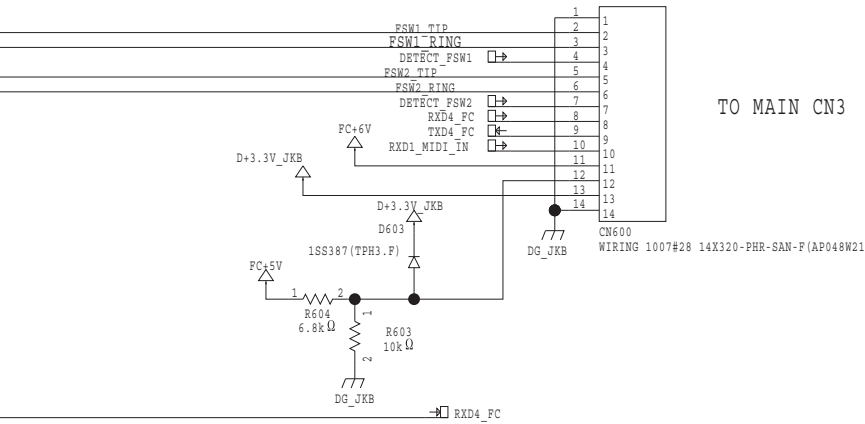




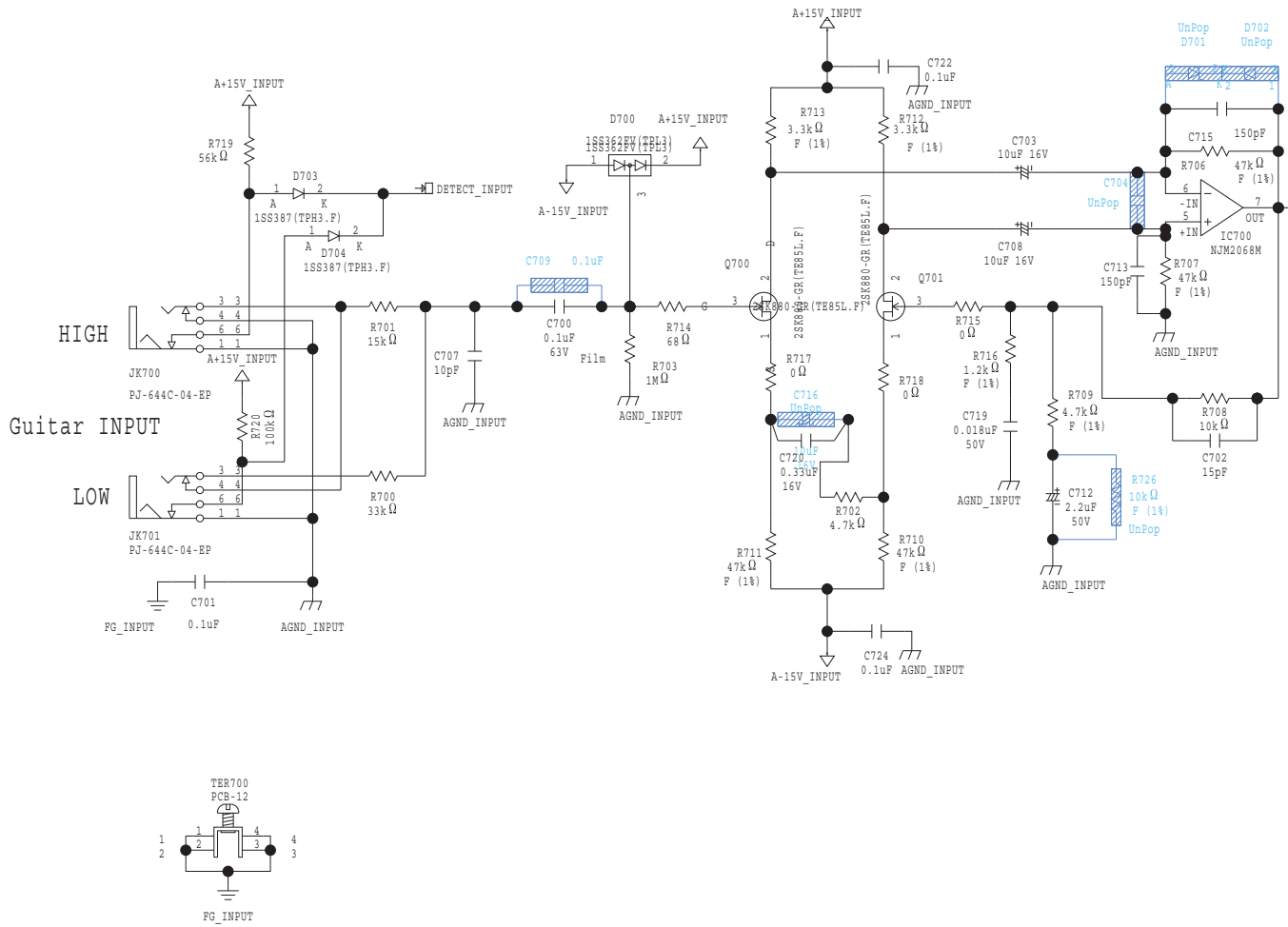


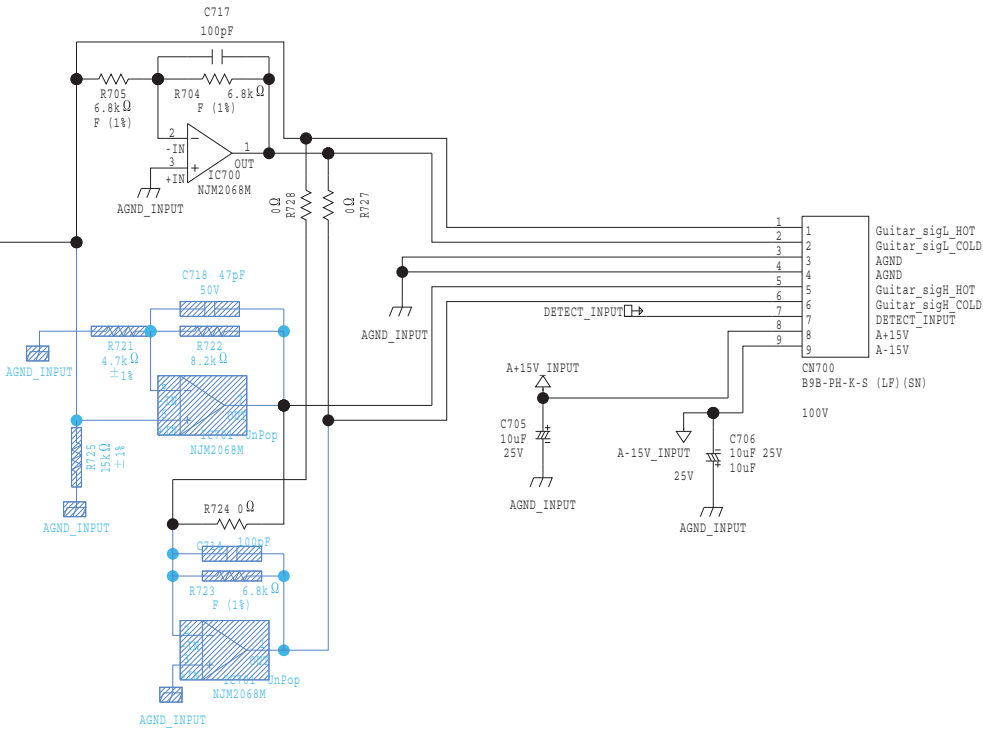
Circuit Diagram (BC-Tour(B) Jack FS Board)





Circuit Diagram (BC-Tour(B) Input Tour Board)





TO MAIN BOARD CN6

