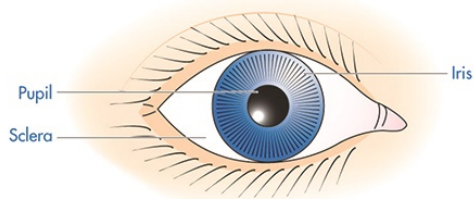


Your eye discomfort is gone along with by high temperature, frustration, or unusual light level of sensitivity. In the eye, swelling of the cornea might be serious adequate to leave permanent marks. Tiles can also trigger swelling of the retina.

Follow your medical professional's directions. They could provide you eye goes down to prevent glaucoma if they find that you have high eye pressure. Microsurgery. In a treatment called a trabeculectomy, your doctor creates a new network to drain the liquid as well as convenience eye pressure.

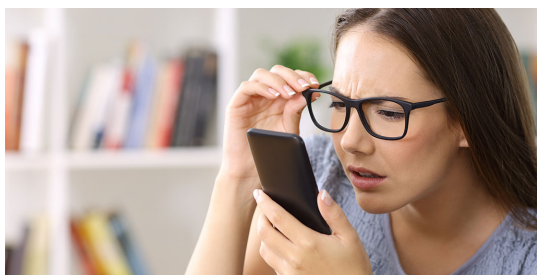


"Mayo," "Mayo Center," "MayoClinic.org," "Mayo Facility Healthy Living," and also the triple-shield Mayo Facility logo design are trademarks of Mayo Structure for Medical Education and also Research Study. Improve the air high quality of your area. Some changes that may assist prevent completely dry eyes include utilizing a humidifier, readjusting the thermostat to reduce blowing air and also preventing smoke. If you smoke, take into consideration quitting. Relocating your chair to a different area may help in reducing the quantity of completely dry relocating air on your eyes as well as face.

What causes pain in the eyeball?

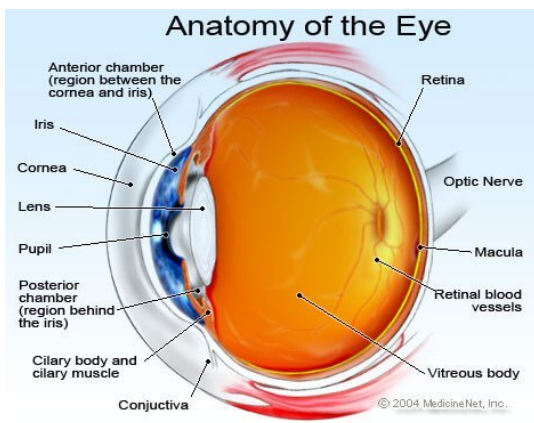
Drink plenty of fluids like water, fruit juices, and clear soups. Gargle with warm salt water a few times a day if you have a sore throat. Throat sprays or lozenges may also help with the pain. Use a nose spray to help loosen mucus and moisten the skin in your nose.

Popular in: Eye Health And Wellness/ Blindness



How do you get rid of a headache and eye pain?

The literature suggests that stress may play a part in the precipitation of acute closed-angle glaucoma because intraocular pressure (IOP) can be affected by the emotional state of the patient. The first is the suggestion that stress is a significant factor in the etiology of acute closed-angle glaucoma.



- If you experience fuzzy vision or trouble seeing clearly along with having eye discomfort when you blink, your vision might be transforming.
- Here's what you need to know.
- This unpleasant experience might be triggered by a concern influencing the eyes, but the cause is most likely a condition impacting the bordering tissue of the face.
- You can likewise utilize non-prescription cold medications to assist you really feel better.
- Gradually, damages to the optic nerve from inadequate blood supply to the eye can at some point trigger vision loss.

Fulfilling and also talking with other individuals with glaucoma can be extremely useful, and also many support system exist. Get in touch with health centers as well as eye treatment facilities in your location to find neighborhood teams and conference times.

Your physician might need to run examinations or perform an examination if the cause of your eye discomfort isn't noticeable. A basic family practitioner can suggest medications for most of one of the most usual root causes of eye pain. These consist of pink eye, styes, as well as completely dry eyes. You ought to see your doctor if symptoms don't ease within 2 days or at-home solutions aren't reliable as well as the discomfort worsens.

That's why glaucoma is often called the "sneak burglar of vision." The major indicator is normally a loss of side, or outer, vision. Normal-tension glaucoma. This is when you have unseen areas in your vision or your optic nerve is damaged although your eye pressure is within the ordinary variety.

Use safety glasses

Glaucoma can trigger permanent vision loss or even complete blindness within a few years if the damage worsens. The signs of an attack of "angle-closure" glaucoma might consist of pain, obscured vision, coloured haloes around lights, throwing up, nausea or vomiting and frustration. If you are having these symptoms, then this may be a sign of an assault of glaucoma as well as you ought to seek assistance from your eye doctor. Sinusitis (swelling of the sinuses) and also sinus infection can cause facial discomfort around the eyes. Since there are sinus tooth cavities around the bony orbit that houses the eyeball, pain can establish around the eye.

People with glaucoma may make use of medicated eye drops to decrease the stress building in their eyes. The best way to deal with a lot of the conditions that cause eye discomfort is to enable your eyes to rest. Looking at a computer system display or television can create eyestrain, so your physician might need you to rest with your eyes covered for a day or more. A sudden rise in pressure, called intense angle closure glaucoma, is an emergency <http://www.sm-industry.ru/bitrix/rk.php?goto=https://dolor-drdelgadocidranes.com> situation, and prompt therapy is required to avoid permanent vision loss.