

SuntekCam App Quick Start Guide

When you install app firmware already, but don't know how to use app, please follow below steps to proceed:

1. Download and install the App.

Use your mobile phone to scan below QR code, download and install the App SuntekCam, you can also search SuntekCam at Apple store or Google play to download the app.

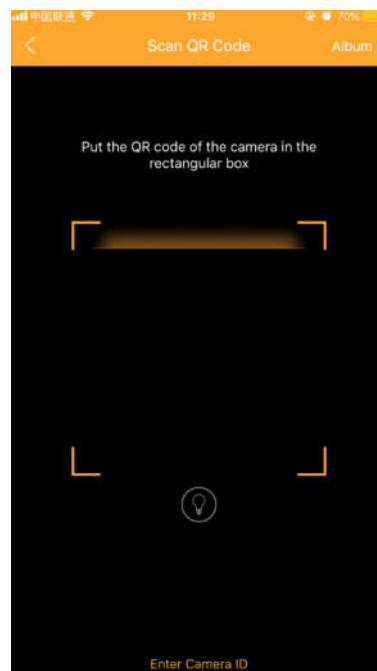


2. Add your camera into your App

When camera at TEST mode, press OK button directly, there will be Device ID (the third), press OK button, you will find camera QR code as below screenshot.



initiate the App, press " + " , scan the QR code of camera and add the camera in your App



When you app shows "invalid device ID", it means your camera has not been added into App server.

You need to send us your IMEI number, and we will add your IMEI number into App server, then you camera device ID is available, here is how to get IMEI:

Move power switch to TEST and camera turn on, press the LEFT button directly, then there will be IMEI on the left corner of display.



After you add the camera, device name, you can fill in any name, device password 123456

10:14 AM

< Add device

Device name

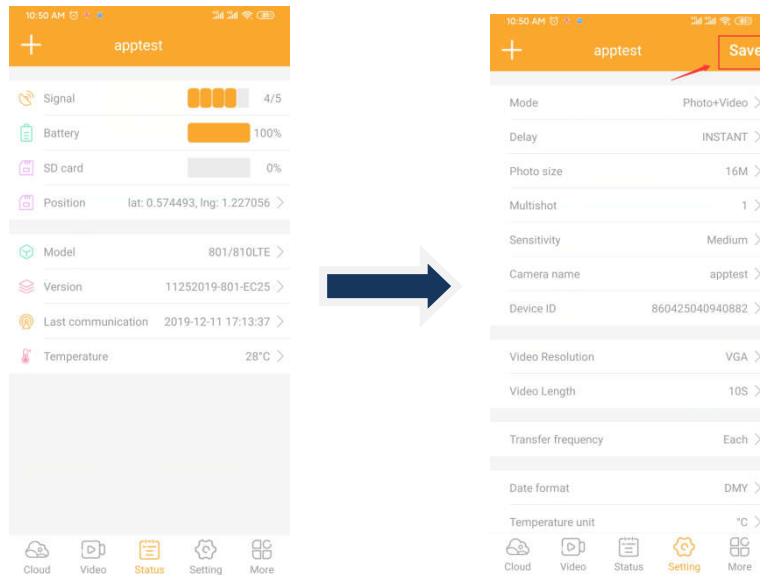
APPTTEST

check device password

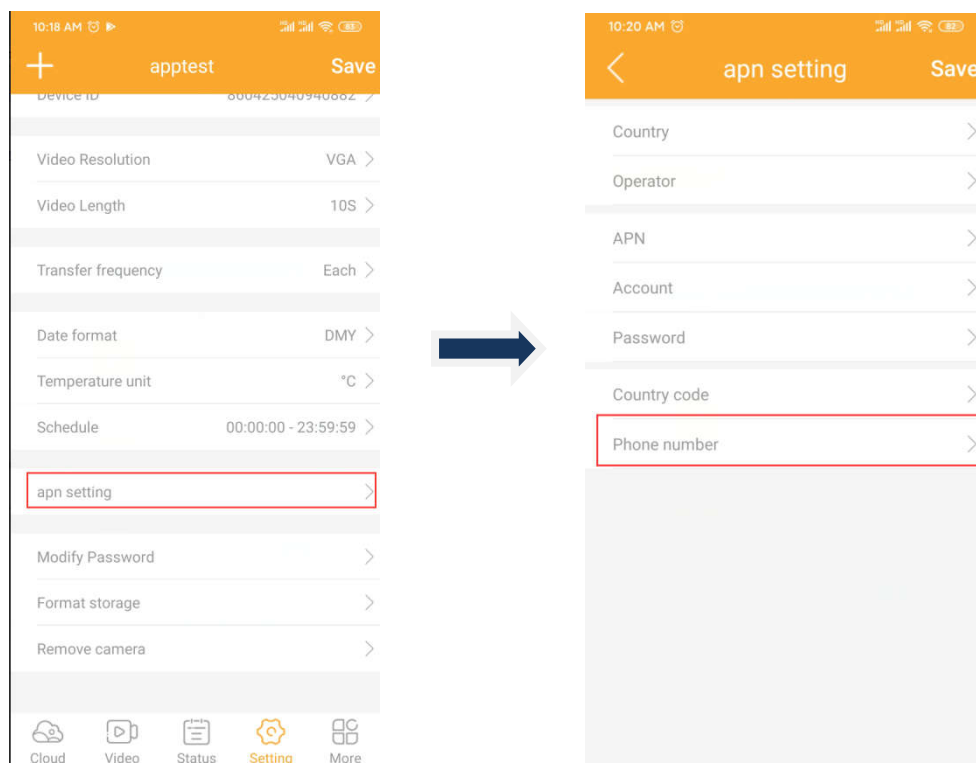
123456

Submit

Press Submit, then camera add into app successfully, you can check the camera data and setup the camera such as APN, phone number, for example: change the mode to Camera& Video, then press "save" to save the setting.



Note: in APN setting, phone number is the SIM card number inserted into camera, not the phone number to receive the pictures.

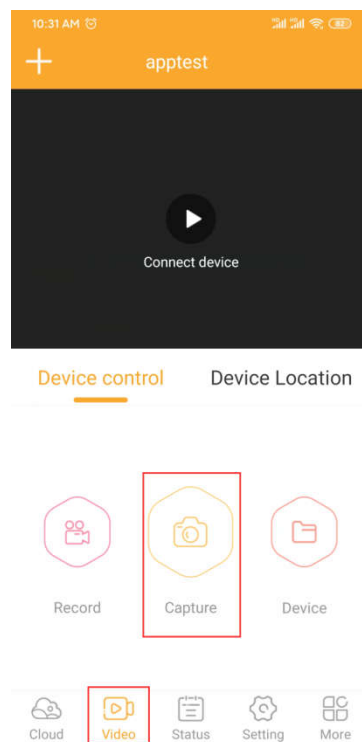


When all the setting is ok, move camera power switch to ON mode, then camera will start to work.

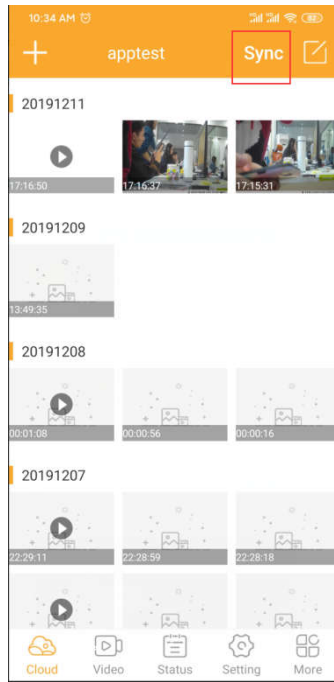


3. How to get pictures and videos ?

1). In "video" submenu, press " capture", then camera will get a command from App and capture a picture / video.

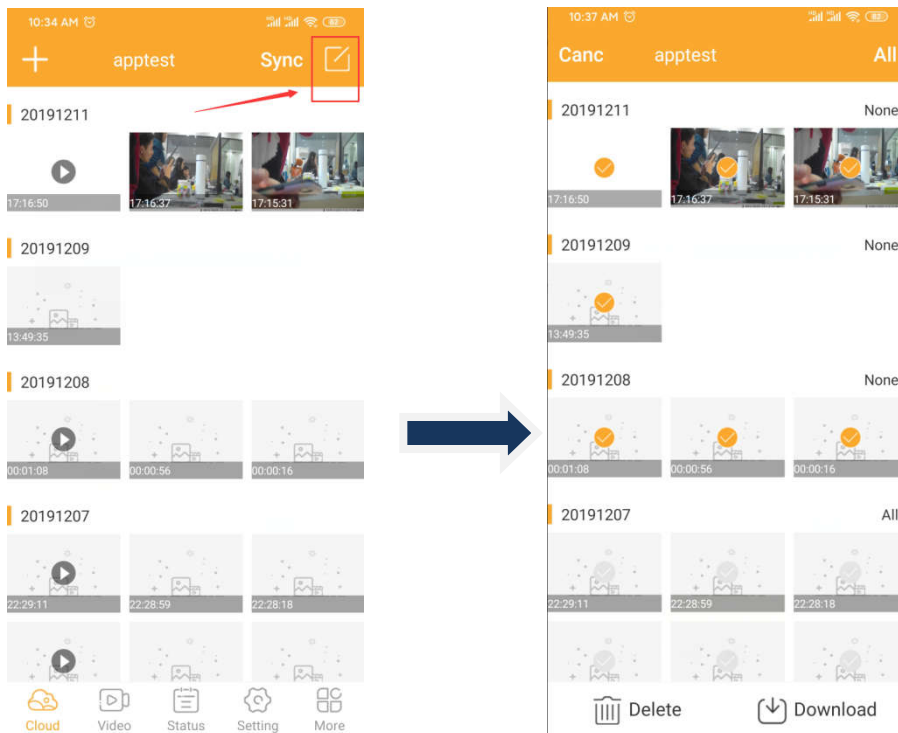


2).In "cloud" submenu, press" Sync" , wait for 15~30 seconds, move the camera display to refresh, there will be a picture or video

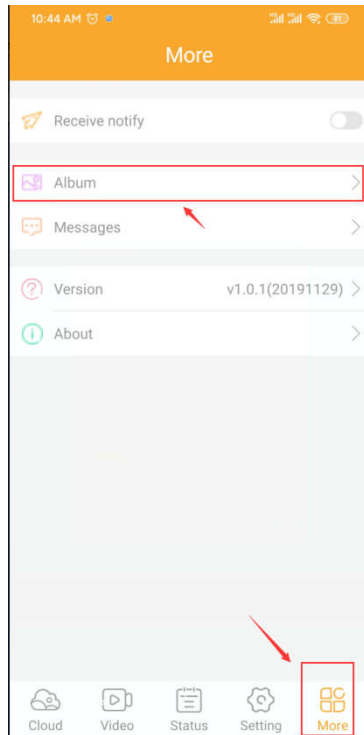


3). You can download the pictures and videos to mobile phone.

a).press the icon on the right corner, choose the pictures and videos, then download them



b).In submenu "more", choose "Album", you will find the downloaded pictures and videos here.



FQA:

Q: Will the camera still support mms/smtp?

A: no, camera will not support mmsconfig application and mms/smtp, but you can install the mmsconfig version firmware to get it back.

Q:When the app start, menu is in Chinese, how can i change to English menu?

A: change your mobile phone language to English and restart the app.

Q:Does this app support all the camera?

A: support 3G and 4G camera, doesn't support 2G camrea.

Q: Can this App add many camera?

Yes, it can add more cameras if you have, and you can also remove camera in Setting submenu.