

70 – Trim, insulation

1 Front door trim panels

1.1 Exploded view of fitting locations

1 - Removing and installing insulation ⇒ [page 181](#)

2 - Removing and installing door trim ⇒ [page 176](#)

3 - Removing and installing trim panel ⇒ [page 178](#)

4 - Removing and installing interior door handle with central locking system switch ⇒ [page 184](#)

5 - Removing and installing mirror adjustment switch ⇒ [page 184](#)

6 - Removing and installing filler neck compartment lid/rear lid release switch ⇒ [page 187](#)

7 - Removing and installing exit light ⇒ [page 185](#)

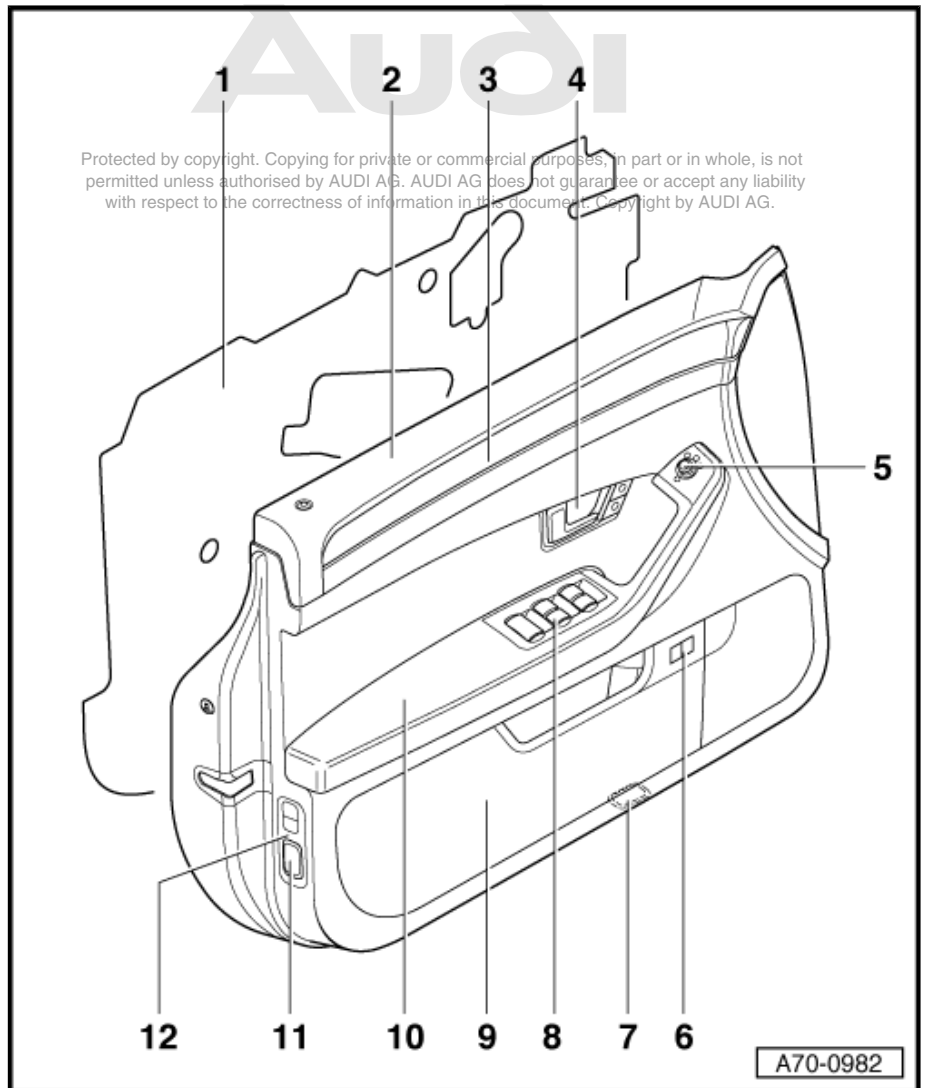
8 - Removing and installing window regulator switch module ⇒ [page 183](#)

9 - Removing and installing hinged pocket with mount ⇒ [page 185](#)

10 - Removing and installing armrest ⇒ [page 182](#)

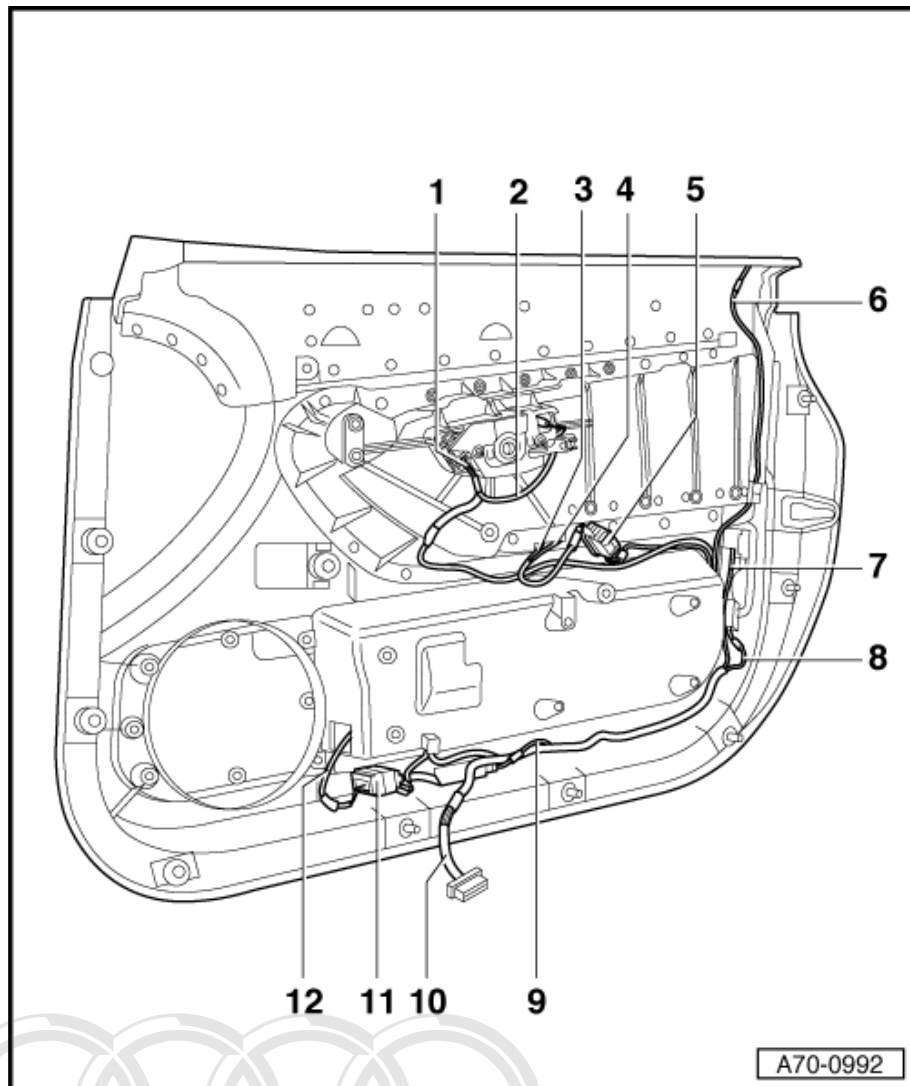
11 - Removing and installing door warning light ⇒ [page 185](#)

12 - Removing and installing interior monitor switch module ⇒ [page 185](#)



1.2 Exploded view of door trim cable routing

- 1 - Cable to central locking switch (driver side only)
- 2 - Cable to interior door handle light
- 3 - Cable to mirror adjustment switch
- 4 - Cable to window regulator switch
- 5 - Connector for window regulator switch module and mirror adjustment switch
- 6 - Cable to anti-theft alarm system lighting
- 7 - Cable to interior monitor switch module
- 8 - Cable to door warning light
- 9 - Cable to exit light
- 10 - Cable to window regulator control unit cable
- 11 - Filler neck compartment lid/rear lid release switch module connector
- 12 - Cable to filler neck compartment lid/rear lid release switch module



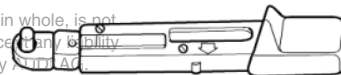
1.3 Removing and installing front door trim

Special tools and workshop equipment required

- ◆ Torque wrench -V.A.G 1410-

Protected by copyright. Copying for private or commercial purposes, in part or in whole, is not permitted unless authorised by AUDI AG. AUDI AG does not guarantee or accept liability with respect to the correctness of information in this document. Copyright by AUDI AG

V.A.G 1410



W00-0554

1 - Door trim

◆ Removing

- Remove the trim panel -3- ⇒ [page 178](#).
- Unscrew the bolt -2-.
- Close the hinged pocket -5-.
- Unscrew the bolt -4-.
- Starting at the bottom, unfasten the door trim -1- at the clips -6- (8x).
- Disengage the Bowden cable for the interior door handle ⇒ [page 177](#).
- Unplug the connector at the window regulator control unit ⇒ [page 178](#).

◆ Installing

- Make sure all the clips -6- are in position on the back of the door trim. Replace damaged clips ⇒ [page 178](#).
- Install the door trim -1- in the reverse order of removal.

2 - Bolt

- Tightening torque 4 Nm.

3 - Trim panel

4 - Bolt

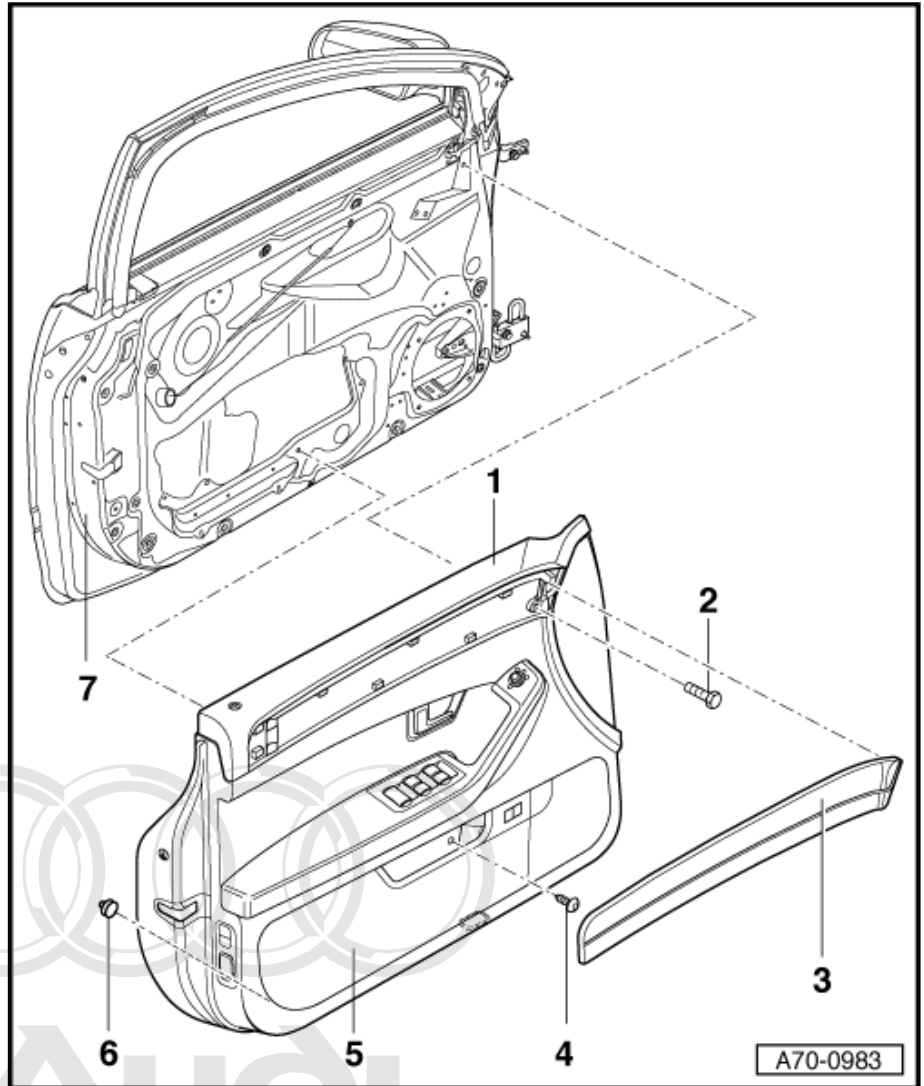
- Tightening torque 4 Nm.

5 - Hinged pocket with mount

6 - Clips (8x)

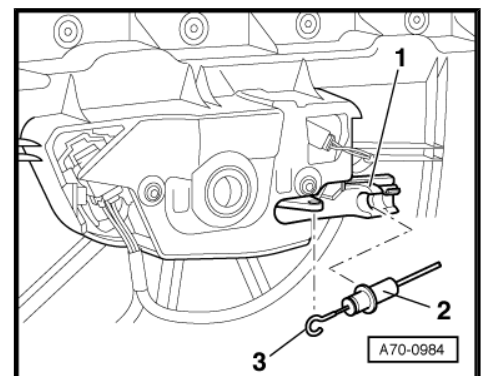
7 - Door shell

Protected by copyright. Copying for private or commercial purposes, in part or in whole, is not permitted unless authorised by AUDI AG. AUDI AG does not guarantee or accept any liability with respect to the correctness of information in this document. Copyright by AUDI AG.



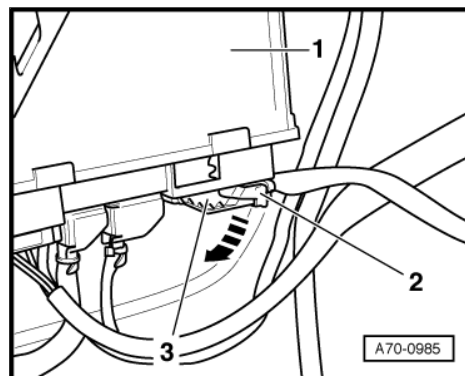
Disengaging Bowden cable for interior door handle

- Pull the Bowden cable -2- out of the guide -1-.
- Disengage the hook -3-.



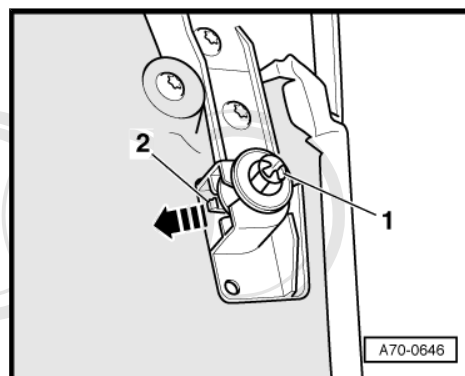
Connector at window regulator control unit

- Unfasten the securing clip -2- and unplug the connector -3- in arrow direction from the control unit -1-.



Door trim securing clip

- Press the retainer tab -2- and pull out the clip -1- in arrow direction.



1.4 Removing and installing trim panel

◆ Removing

- Carefully prise out the trim panel -1- in arrow direction.
- Pull off the trim panel -1- to the front.

◆ Installing

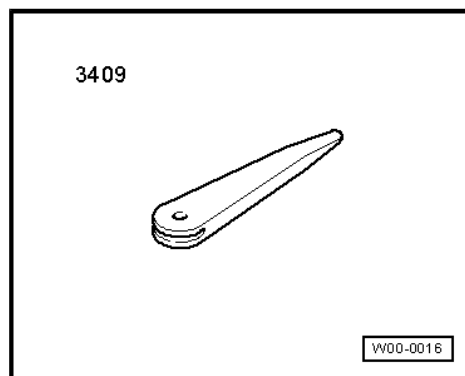
- Install the trim panel -1- in the reverse order of removal.



1.5 Replacing front door trim decorative trim

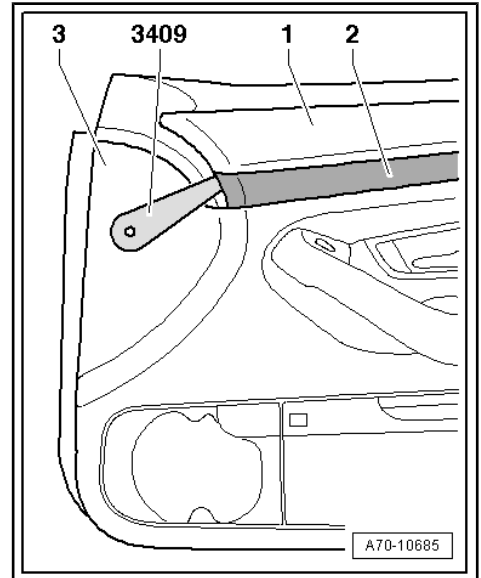
Special tools and workshop equipment required

- ◆ Removal wedge -3409-




Removing wooden trim

- By prising out with the removal wedge -3409-, unclip the wooden trim -1- from front to rear from the door trim.
- To do so, apply the removal wedge -3409- as shown between the door trim -3- and the decorative trim -2-.



Shearing off retainers at decorative trim

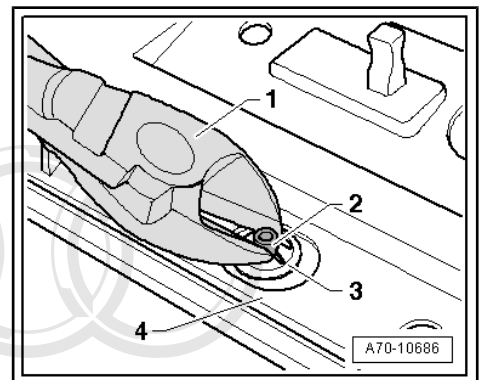
- Place the wooden trim -4- on a suitable soft surface.



Caution

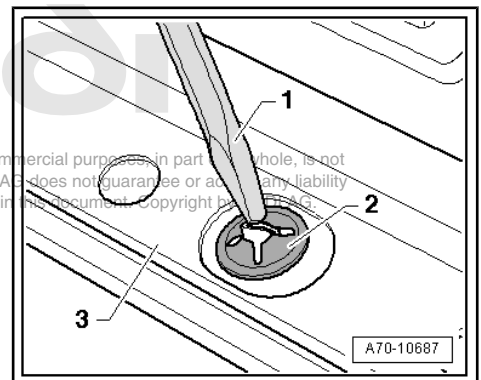
Take care to avoid scratches and damage on the visible side of the wooden trim.

- Cut off the retainers -2- on the back of the decorative trim directly above the ring clips -3-.



Removing ring clips

- Prise the ring clips -2- off the wooden trim -3-.



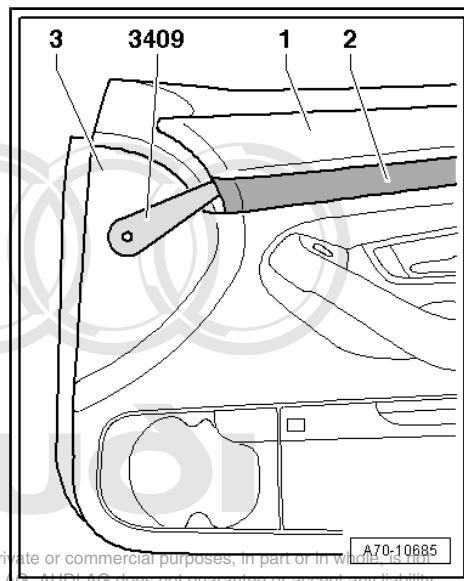
Protected by copyright. Copying for private or commercial purposes, in part or whole, is not permitted unless authorised by AUDI AG. AUDI AG does not guarantee or accept any liability with respect to the correctness of information in this document. Copyright by AUDI AG.

Detaching decorative trim

- Carefully pull the decorative trim -2- off the wooden trim holder -1-.

The decorative trim is fixed in position with double-sided adhesive tape.


- Remove the old double-sided adhesive tape from the holder of the wooden trim -1-.



Protected by copyright. Copying for private or commercial purposes, in part or in whole, is not permitted unless authorised by AUDI AG. All rights reserved. Copyright by AUDI AG with respect to the correctness of information in this document. Copyright by AUDI AG.

Fitting new decorative trim

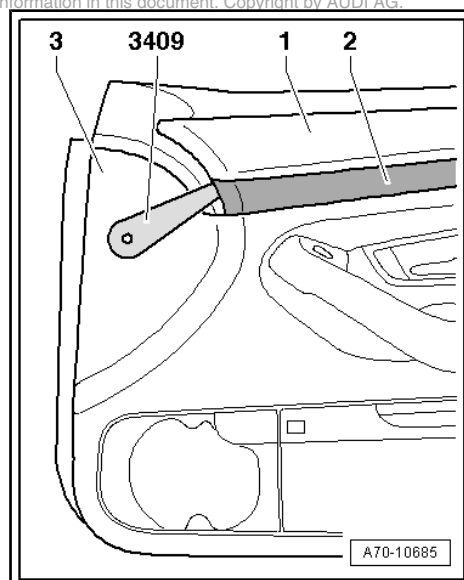
- Insert the decorative trim in the holder.



Caution

Always use new double-sided adhesive tape.

- Bond the new double-sided adhesive tape onto the holder of the wooden trim -1-.

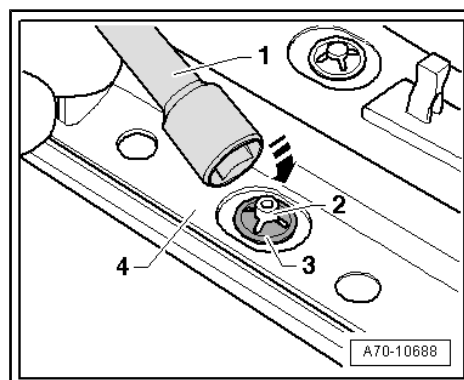


Securing decorative trim

Position the ring clips -3- on the retainers -2-.

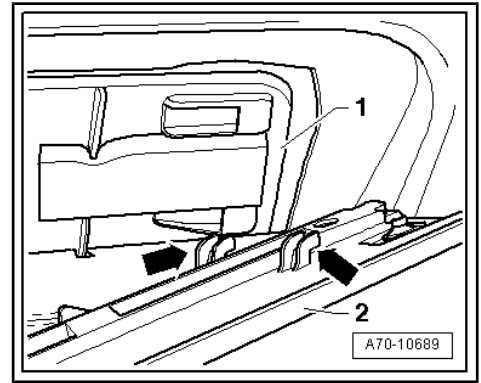
Press the ring clips -3- onto the retainers -2-.

4 - Wooden trim with trim holder



Inserting wooden trim in door trim

- Insert the wooden trim -2- with the fasteners -arrows- in the door trim -1-.
- Starting from the rear and working forwards, engage the wooden trim in the clips and press on to secure.



1.6 Removing and installing insulation

1 - Insulation

◆ Removing

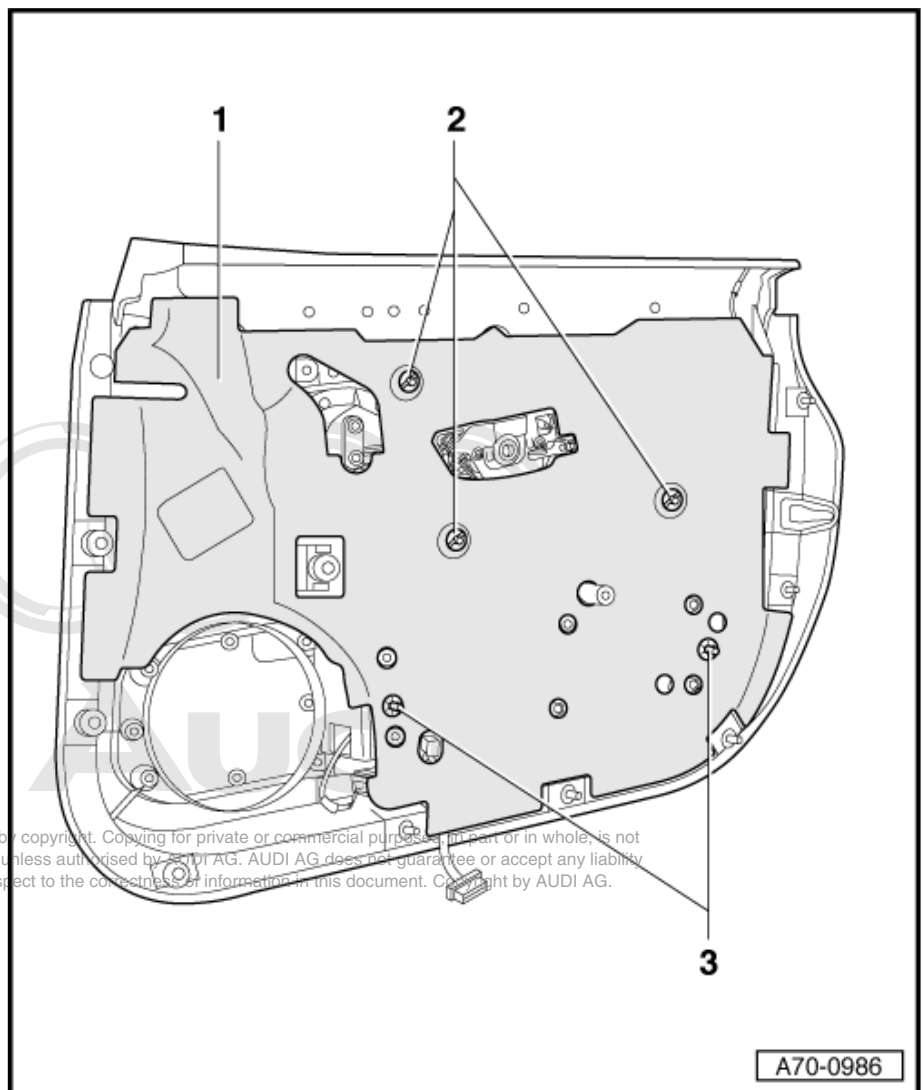
- Remove the door trim
 ⇒ [page 176](#) and
 ⇒ [page 176](#).
- Unscrew the holders
 -2- (3x).
- Use a screwdriver to
 prise off the circlips -3-
 (2x).
- Detach the insulation
 -1-.

◆ Installing

- Install the insulation -1-
 in the reverse order of
 removal.

2 - Holder (3x)

3 - Circlips (2x)



Protected by copyright. Copying for private or commercial purposes, in part or in whole, is not permitted unless authorised by AUDI AG. AUDI AG does not guarantee or accept any liability with respect to the correctness of information in this document. Copyright by AUDI AG.

1.7 Removing and installing armrest

1 - Armrest

◆ Removing

- Remove the door trim
⇒ [page 176](#) and
⇒ [page 176](#).
- Remove the insulation
⇒ [page 176](#) and
⇒ [page 181](#).
- Unscrew the bolts -4-
(2x).
- Unscrew the bolts -3-
(9x).
- Unclip the connector
guide -5- from the door
trim -2-.
- Unplug the connector
-6-.
- Detach the connector
guide -5- from the con-
nector -6-.
- Detach the armrest -1-.

◆ Installing

- Install the armrest -1- in
the reverse order of re-
moval.

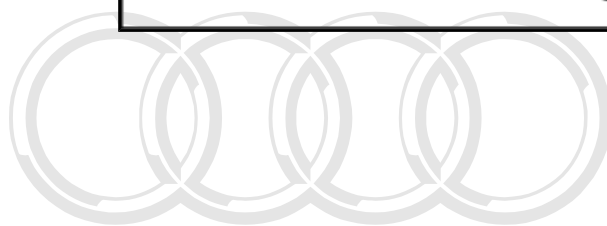
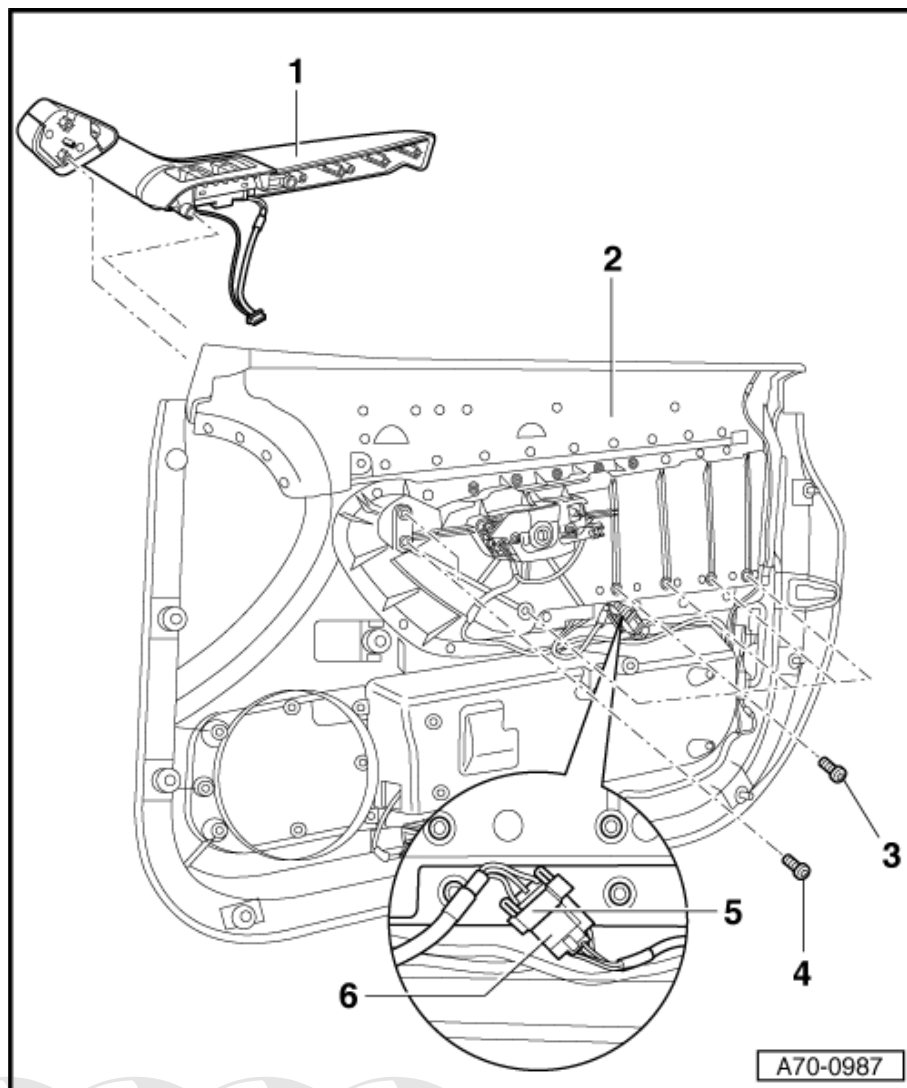
2 - Door trim

3 - Bolts (9x)

4 - Bolts (2x)

5 - Connector guide

6 - Connector for window reg- ulator switch module and mir- ror adjustment switch

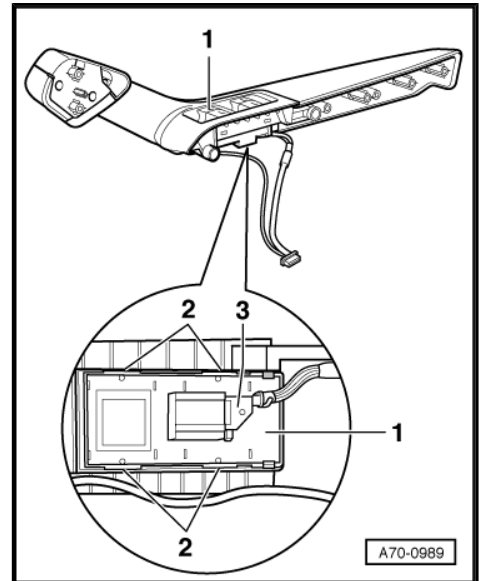


Audi

Protected by copyright. Copying for private or commercial purposes, in part or in whole, is not permitted unless authorised by AUDI AG. AUDI AG does not guarantee or accept any liability with respect to the correctness of information in this document. Copyright by AUDI AG.

1.8 Removing and installing window regulator switch module

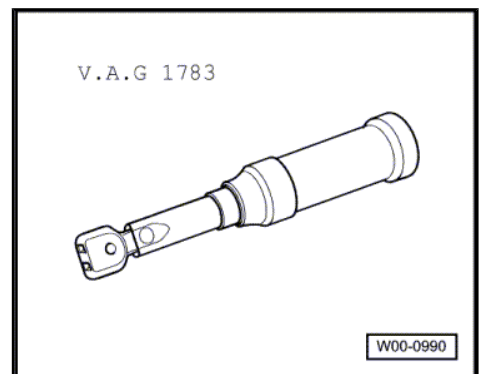
- ◆ Removing
 - Remove the door trim ⇒ [page 176](#) .
 - Remove the insulation ⇒ [page 176](#) and ⇒ [page 181](#) .
 - Remove the armrest ⇒ [page 182](#) .
 - Use a screwdriver to prise out the window regulator switch module -1- at the locations marked -2- (4x).
 - Unplug the connector -3-.
- ◆ Installing
 - Install the window regulator switch module -1- in the reverse order of removal.



1.9 Dismantling armrest

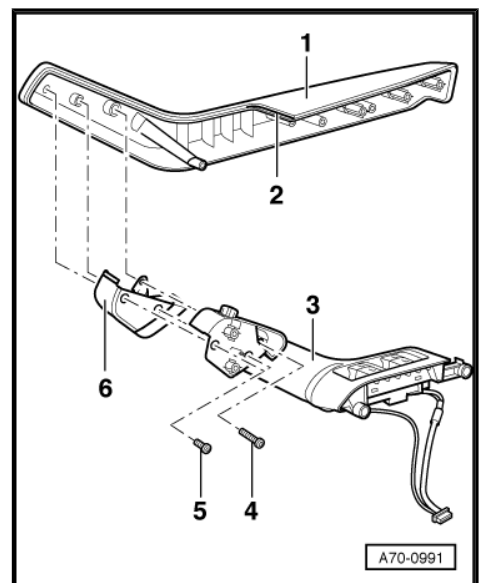
Special tools and workshop equipment required

- ◆ Torque wrench -V.A.G 1783/-



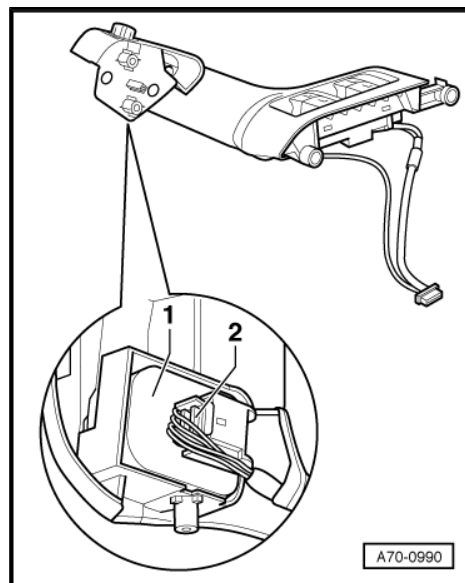
- Remove the door trim ⇒ [page 176](#) .
- Remove the insulation ⇒ [page 176](#) and ⇒ [page 181](#) .
- Remove the armrest ⇒ [page 182](#) .
- Unscrew the bolts -5- (2x).

- ◆ Tightening torque 2 Nm.
- Unscrew the bolt -4-.
- ◆ Tightening torque 2 Nm.
- Pull the front section -3- of the armrest -1- out of the guide -2-.
- Push down the cover -6- to the rear.
- ◆ Installing
- Assemble the armrest in the reverse order of removal.



1.10 Removing and installing mirror adjustment switch

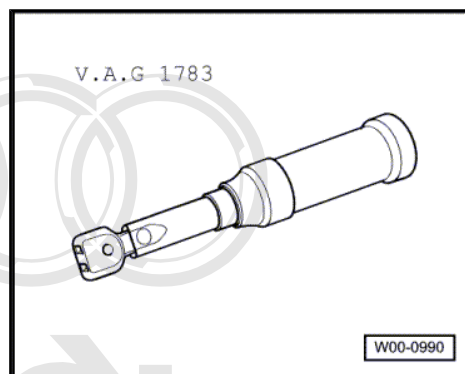
- ◆ Removing
 - Remove the door trim ⇒ [page 176](#) .
 - Remove the insulation ⇒ [page 176](#) and ⇒ [page 181](#) .
 - Remove the armrest ⇒ [page 182](#) .
 - Dismantle the armrest ⇒ [page 183](#) .
 - Use a screwdriver to prise out the mirror adjustment switch -1-.
 - Unplug the connector -2-.
- ◆ Installing
 - Install the mirror adjustment switch -1- in the reverse order of removal.



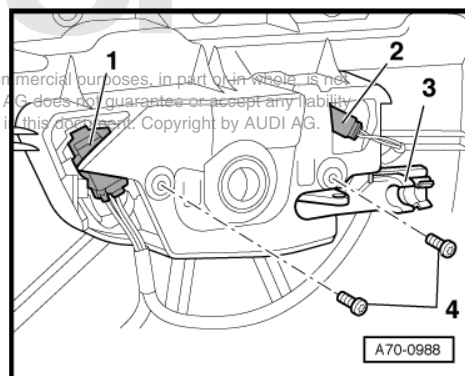
1.11 Removing and installing interior door handle with central locking system switch

Special tools and workshop equipment required

- ◆ Torque wrench -V.A.G 1783/-

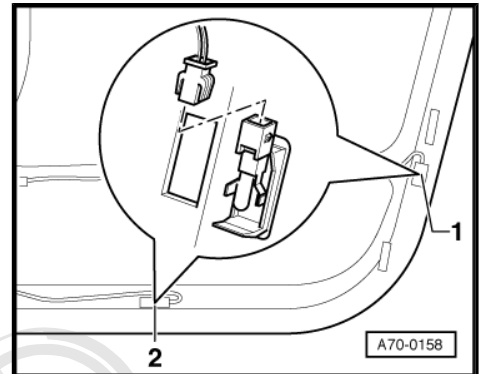


- ◆ Removing
 - Remove the door trim ⇒ [page 176](#) .
 - Unplug the connector -1-.
 - Unplug the connector -2-.
 - Unscrew the bolts -4- (2x).
- ◆ Tightening torque 2 Nm.
- Take out the interior door handle on the front side of the door trim.
- ◆ Installing
 - Make sure the cable of the connector -2- is positioned behind the holder -3-.
 - Install the interior door handle in the reverse order of removal.



1.12 Removing and installing door warning light and footwell light

- Remove the door trim => [page 176](#) .
- Use a screwdriver to prise out the door warning light -1- from underneath and pull out the door warning light -1- with the cable.
- Unplug the connector at the door warning light -1-.
- Use a screwdriver to prise out the exit light -2- at the front and pull out the exit light -2- with the cable.
- Unplug the connector at the exit light -2-.



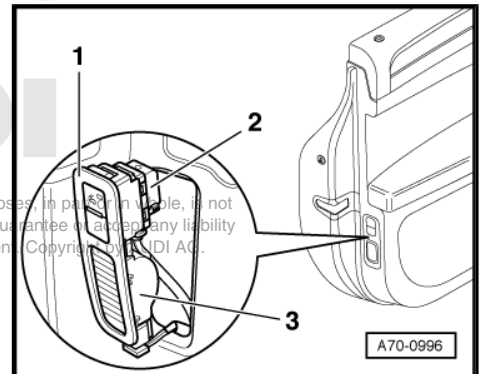
1.13 Removing and installing interior monitor switch module

◆ Door trim removed:

- Press out the interior monitor switch module -1- from the inside.
- Unplug the connectors -2- and -3-.

◆ Door trim fitted:

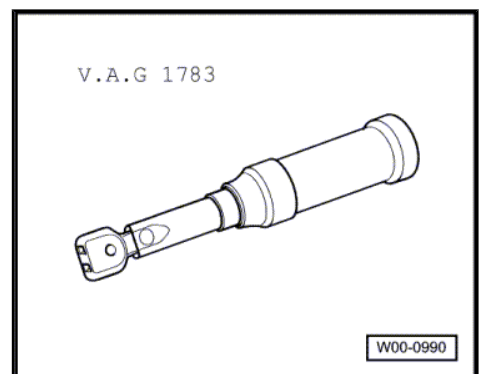
- Use a screwdriver to carefully prise out the interior monitor switch module -1- from above.
- Unplug the connectors -2- and -3-.



1.14 Removing and installing hinged pocket with mount

Special tools and workshop equipment required

- ◆ Torque wrench -V.A.G 1783/-





1 - Hinged pocket with mount

◆ Removing

- Remove the door trim
⇒ [page 176](#) and
⇒ [page 176](#).
- Remove the insulation
⇒ [page 176](#) and
⇒ [page 181](#).
- Unscrew the bolts -4-
(8x).
- Unscrew the bolts -3-
(6x).
- Unclip the connector
guide -6- from the door
trim -2-.
- Unplug the connector
-5-.
- Detach the connector
guide -6- from the con-
nector -5-.
- Take out the hinged
pocket with mount -1- on
the front side of the door
trim -2-.

◆ Installing

- Install the hinged pocket
with mount -1- in the re-
verse order of removal.

2 - Door trim

3 - Bolts (6x)

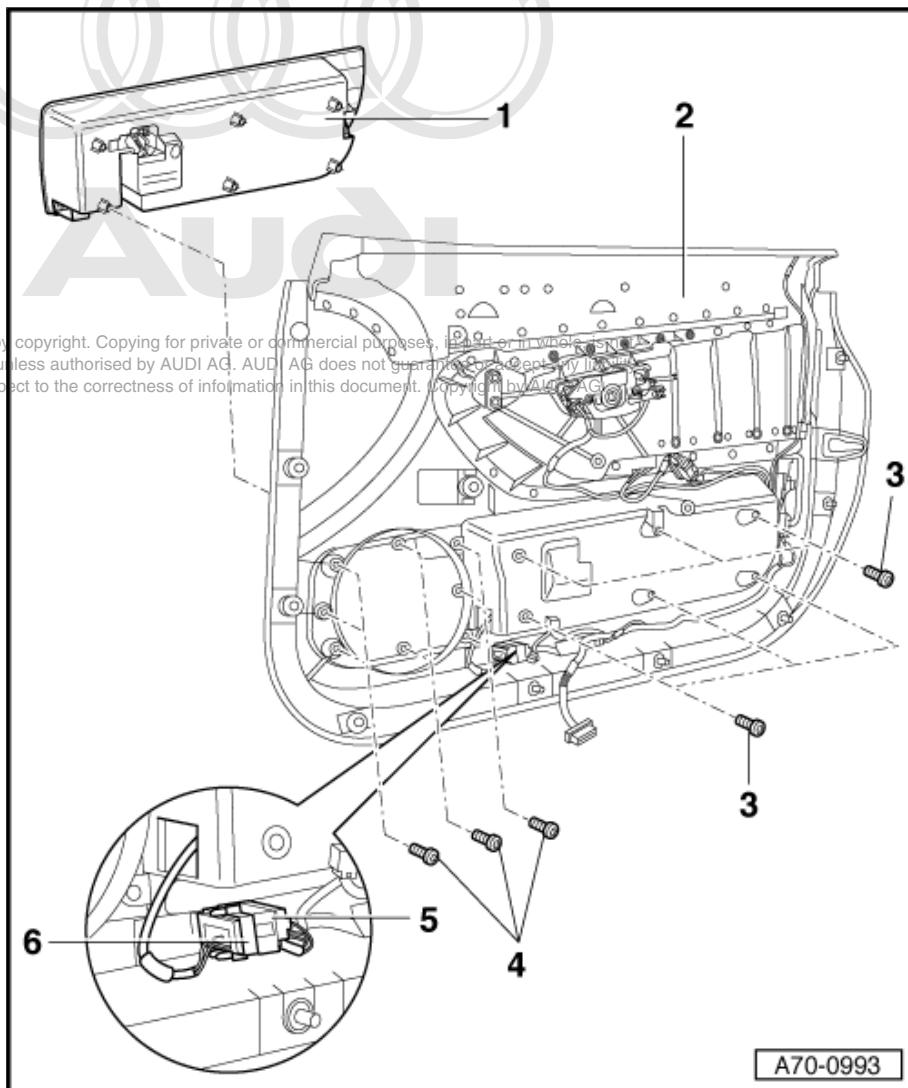
- Tightening torque 2 Nm.

4 - Bolts (8x)

- Tightening torque 2 Nm.

5 - Filler neck compartment lid/ rear lid release switch module connector

6 - Connector guide



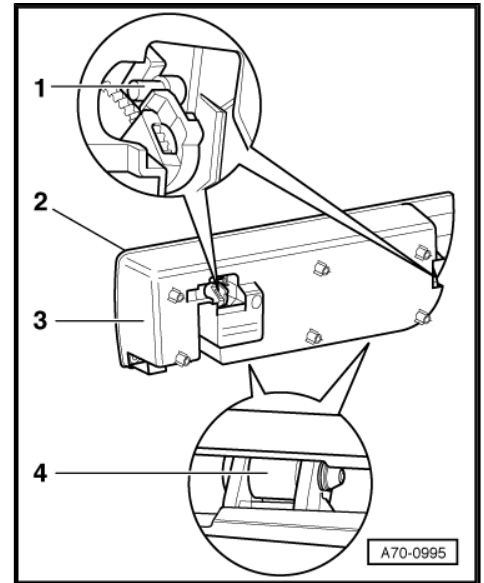
1.15 Removing and installing hinged pocket

◆ Removing

- Remove the door trim ⇒ [page 176](#) .
- Remove the insulation ⇒ [page 176](#) and ⇒ [page 181](#) .
- Remove the hinged pocket with mount ⇒ [page 185](#) .
- Use pliers to pull out the pins -1- (2x).
- Use a screwdriver to prise out the pins -4- (2x).
- Detach the hinged pocket -2- from the mount -3-.

◆ Installing

- Install the hinged pocket -2- in the reverse order of removal.



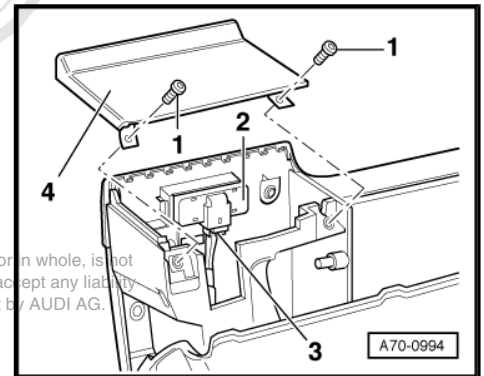
1.16 Removing and installing filler neck compartment lid/rear lid release switch

◆ Removing

- Remove the door trim ⇒ [page 176](#) .
- Remove the insulation ⇒ [page 176](#) and ⇒ [page 181](#) .
- Remove the hinged pocket with mount ⇒ [page 185](#) .
- Unscrew the bolts -1- (2x).
- Detach the cover -4-.
- Prise out the switch -2- on the right side and detach the switch -2-.
- Unplug the connector -3-.

◆ Installing

- Install the filler neck compartment lid/rear lid release switch in the reverse order of removal.



2 Rear door trim panels

2.1 Exploded view of fitting locations

1 - Removing and installing insulation ⇒ [page 192](#)

2 - Removing and installing door trim ⇒ [page 189](#)

3 - Removing and installing trim panel ⇒ [page 192](#)

4 - Sun blind

- Removing and installing mechanical sun blind ⇒ [page 198](#)
- Removing and installing housing for electric sun blind ⇒ [page 200](#)
- Removing and installing electric sun blind drive unit ⇒ [page 203](#)
- Moving electric sun blind with defective drive unit ⇒ [page 203](#)
- Removing and installing electric sun blind control unit ⇒ [page 209](#)

5 - Removing and installing interior door handle with central locking system switch ⇒ [page 195](#)

6 - Removing and installing treble loudspeaker trim ⇒ [page 195](#)

7 - Removing and installing window regulator switch ⇒ [page 193](#)

8 - Removing and installing armrest ⇒ [page 193](#)

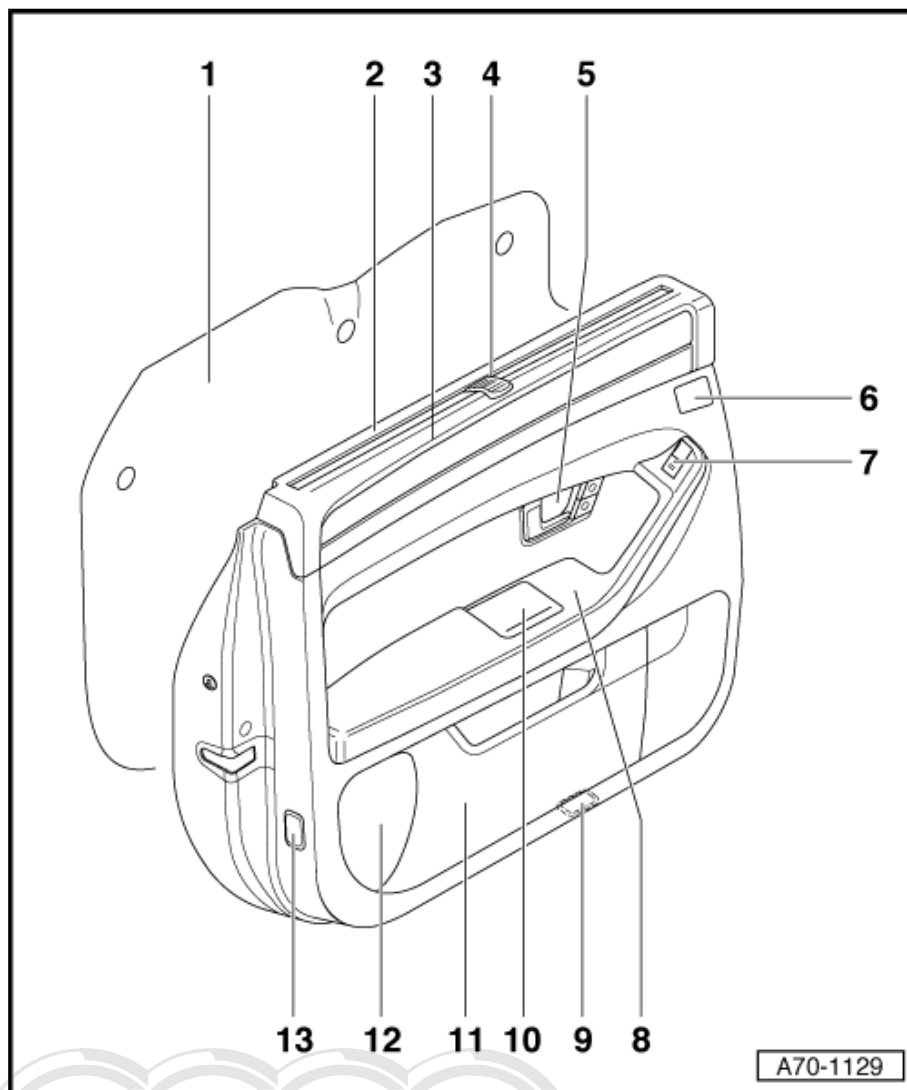
9 - Removing and installing exit light ⇒ [page 194](#)

10 - Ashtray

11 - Removing and installing hinged pocket with mount ⇒ [page 196](#)

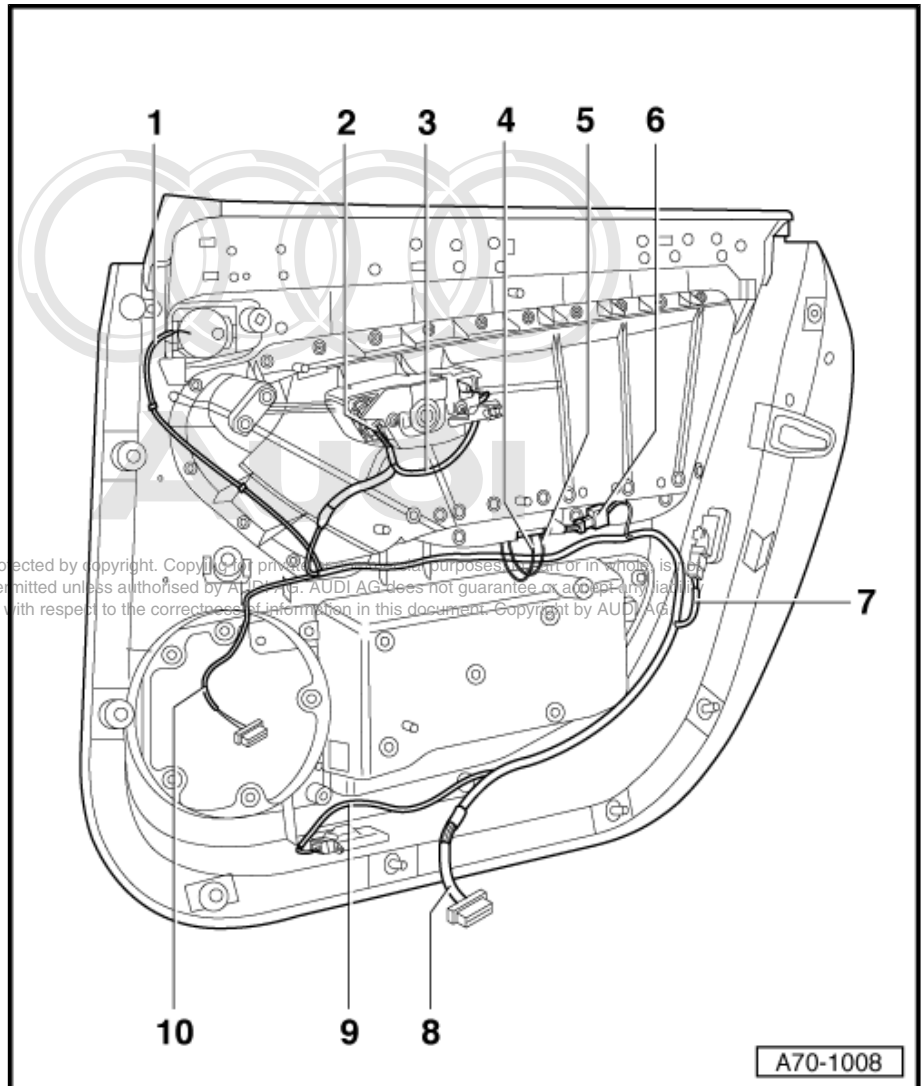
12 - Removing and installing triangular trim ⇒ [page 195](#)

13 - Removing and installing door warning light ⇒ [page 194](#)



2.2 Exploded view of door trim cable routing

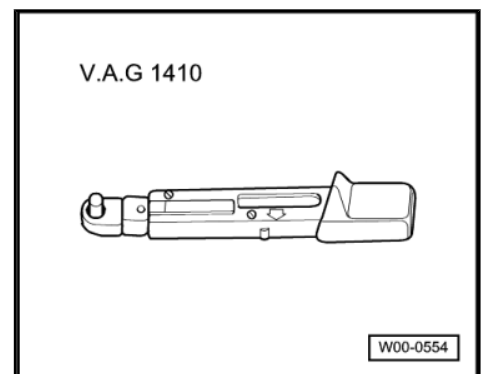
- 1 - Cable to treble loudspeaker
- 2 - Cable to central locking switch (driver side only)
- 3 - Cable to interior door handle light
- 4 - Cable to window regulator switch
- 5 - Cable to ashtray light
- 6 - Connector for window regulator switch module and ashtray light
- 7 - Cable to door warning light
- 8 - Cable to connector at window regulator control unit
- 9 - Cable to exit light
- 10 - Cable to connector at bass loudspeaker



2.3 Removing and installing rear door trim

Special tools and workshop equipment required

- ◆ Torque wrench -V.A.G 1410-



**1 - Door trim****◆ Removing**

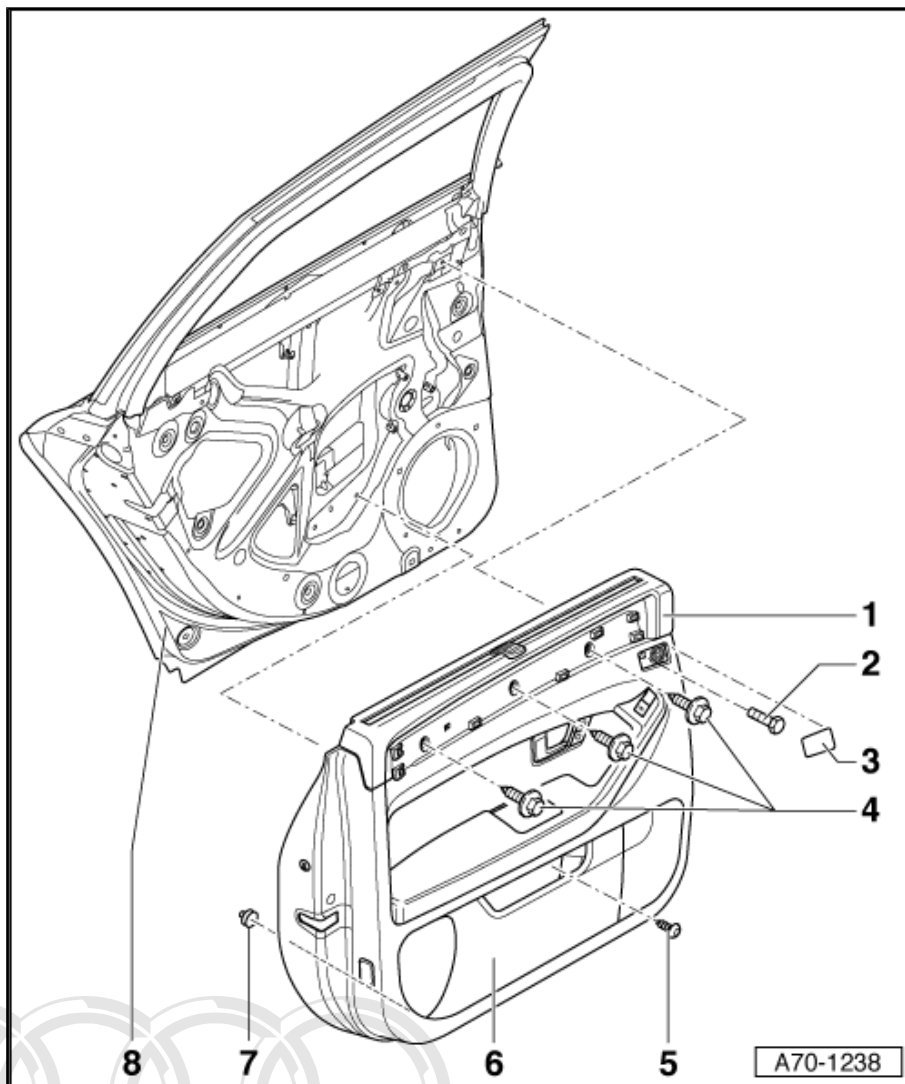
- Use a screwdriver to prise out the treble loudspeaker trim -3-.
- Unscrew the bolt -2-.
- Unscrew the bolt -5-.

Do not open the hinged pocket -6-.

- Sun blind fitted: Remove the trim panel ⇒ [page 192](#).
- Unscrew the bolts -4-.
- Starting at the bottom, unfasten the door trim -1- at the clips -7- (8x).
- Disengage the Bowden cable for the interior door handle ⇒ [page 191](#).
- Unplug the connector at the window regulator control unit ⇒ [page 191](#).
- Unplug the connector at the bass loudspeaker ⇒ [page 191](#).

◆ Installing

- Make sure all the clips -7- are in position on the back of the door trim. Replace damaged clips ⇒ [page 191](#).
- Install the door trim -1- in the reverse order of removal.

**2 - Bolt**

- Vehicles with long wheelbase are fitted with a nut.
- Tightening torque 3 Nm.

3 - Treble loudspeaker trim**4 - Bolts**

- Vehicles with long wheelbase are fitted with 4 bolts.
- Tightening torque 3 Nm.

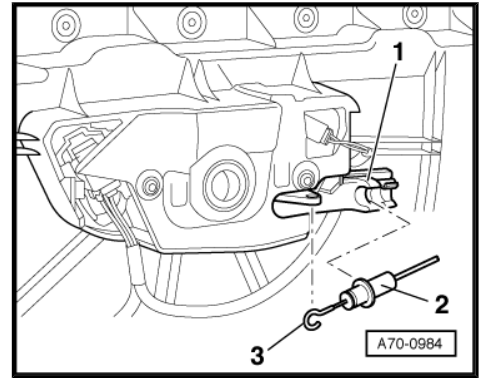
5 - Bolt

- Vehicles with long wheelbase are fitted with a nut.
- Tightening torque 3 Nm.

6 - Hinged pocket with mount**7 - Clips (8x)****8 - Door shell**

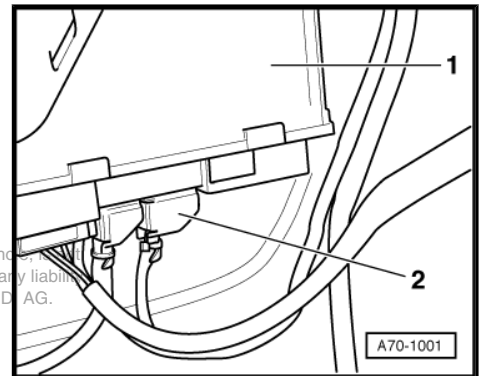
Disengaging Bowden cable

- Pull the Bowden cable -2- out of the guide -1-.
- Disengage the hook -3-.



Unplugging connector at window regulator control unit

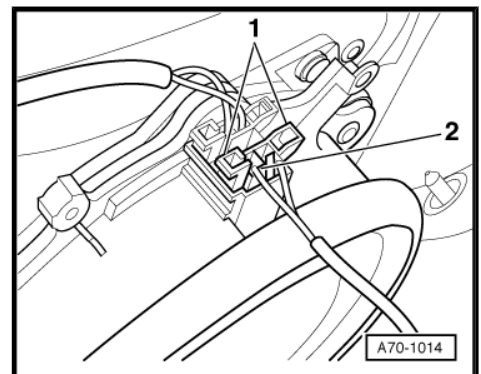
- Press in the retainer tab on the back of the connector -2- and unplug the connector -2- from the control unit -1-.



Protected by copyright. Copying for private or commercial purposes, in part or in whole, is not permitted unless authorised by AUDI AG. AUDI AG does not guarantee or accept any liability with respect to the correctness of information in this document. Copyright by AUDI AG.

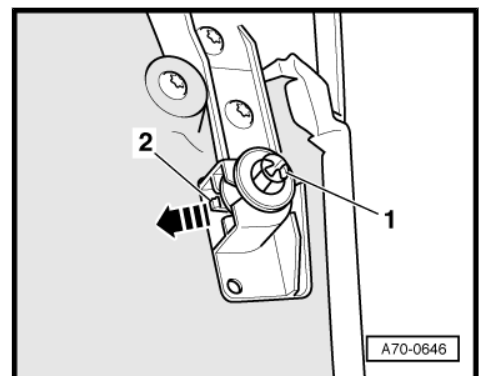
Unplugging connector at bass loudspeaker

- Squeeze the holders -1- (2x) and unplug the connector -2-.



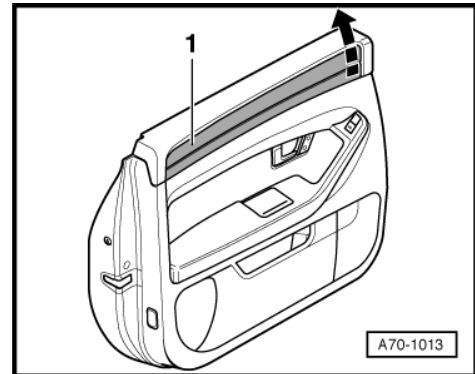
Door trim securing clip

- Press the retainer tab -2- and pull out the clip -1- in arrow direction.



2.4 Removing and installing trim panel

- ◆ Removing
 - Carefully prise out the trim panel -1- in arrow direction.
 - Pull off the trim panel -1- to the front.
- ◆ Installing
 - Install the trim panel -1- in the reverse order of removal.



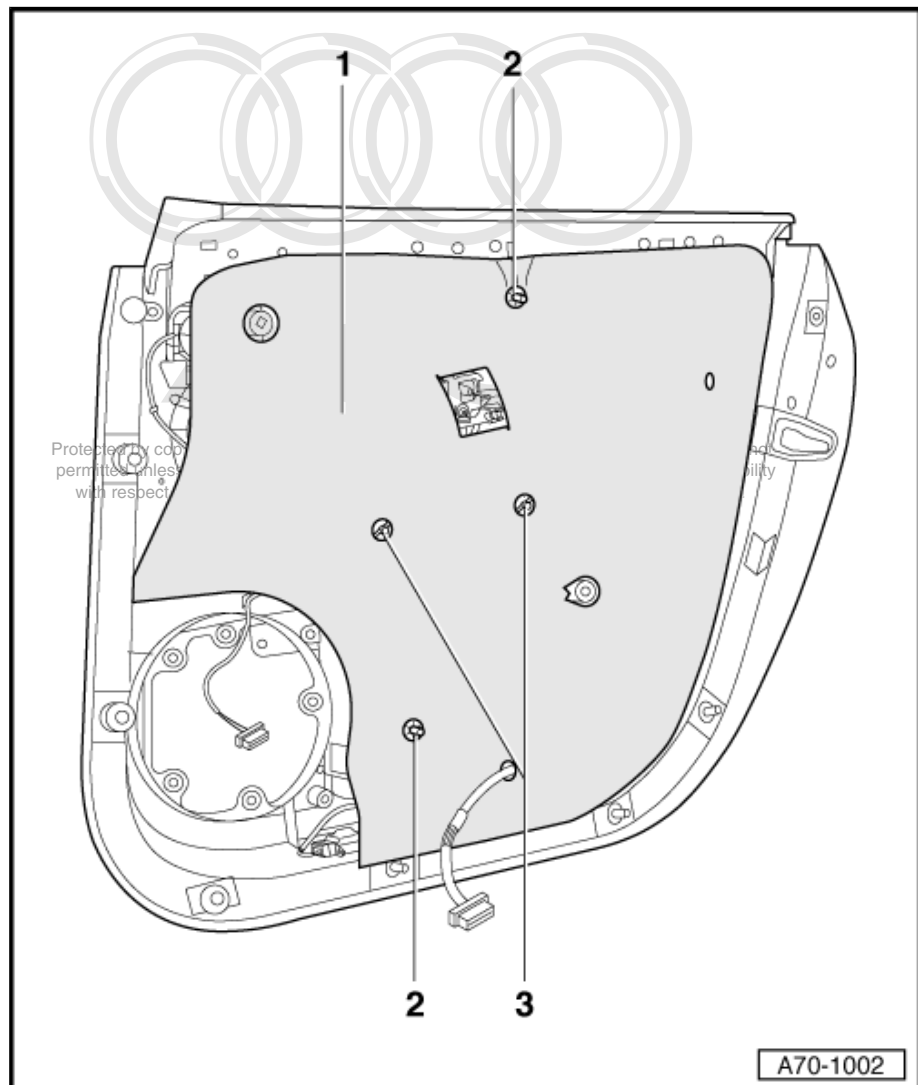
2.5 Removing and installing insulation

1 - Insulation

- ◆ Removing
 - Remove the door trim [⇒ page 189](#).
 - Unscrew the holders -3- (2x).
 - Use a screwdriver to prise off the circlips -2- (2x).
 - Detach the insulation -1-.
- ◆ Installing
 - Install the insulation -1- in the reverse order of removal.

2 - Circlips (2x)

3 - Holder (2x)



2.6 Removing and installing armrest

1 - Armrest

◆ Removing

- Remove the door trim
⇒ [page 189](#).
- Remove the insulation
⇒ [page 192](#).
- Unscrew the bolts -2-
(9x).
- Unscrew the bolts -3-
(2x).
- Unplug the connector for the window regulator switch module -4-.
- Detach the armrest -1-.

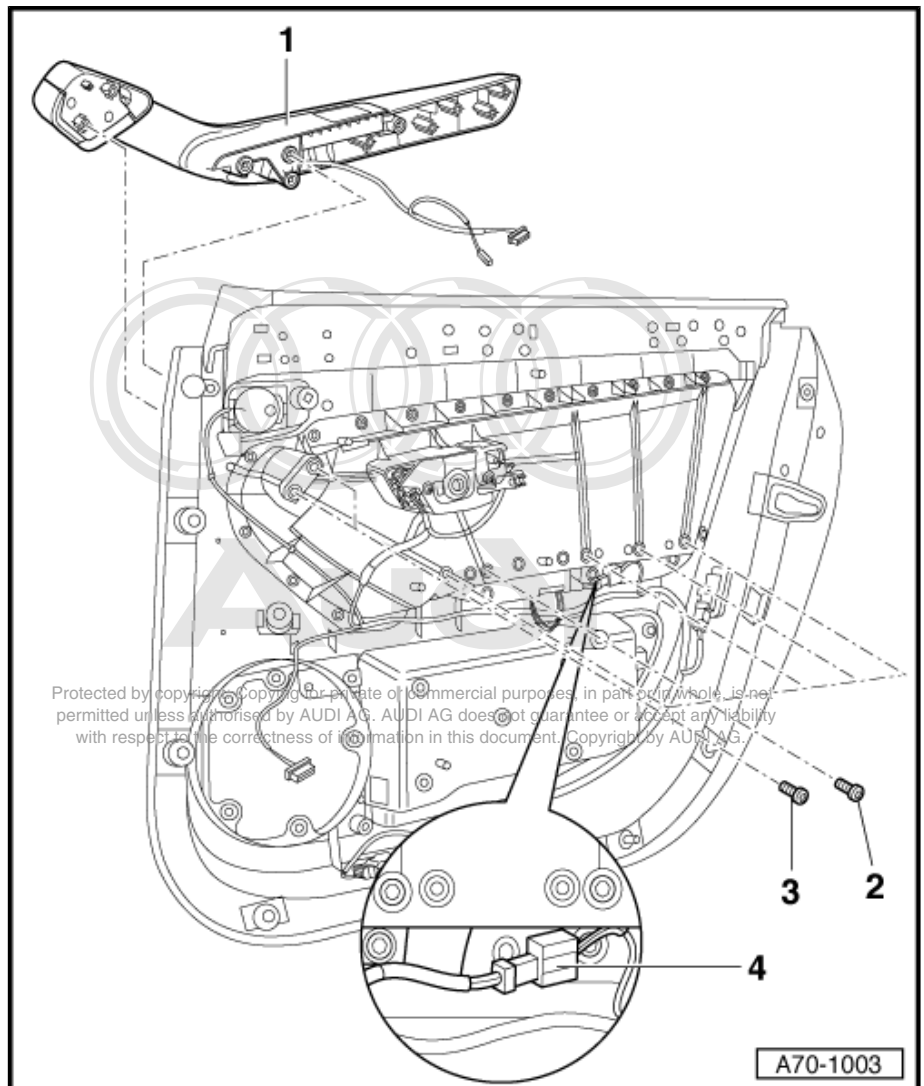
◆ Installing

- Install the armrest -1- in the reverse order of removal.

2 - Bolts (9x)

3 - Bolts (2x)

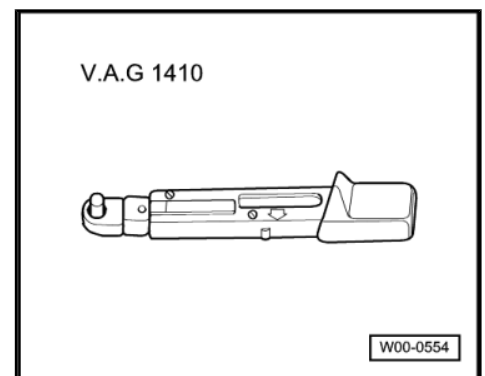
4 - Connector for window regulator switch module



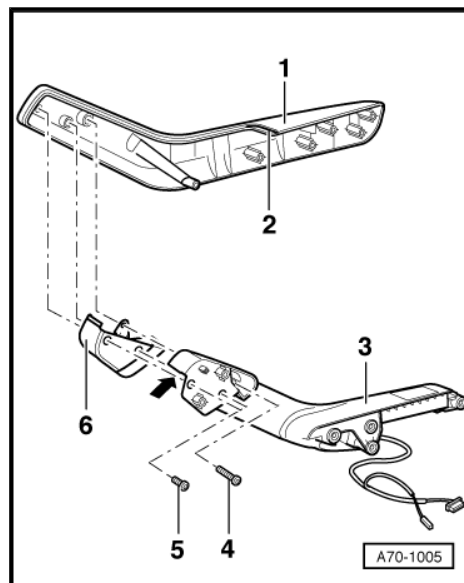
2.7 Removing and installing window regulator switch module

Special tools and workshop equipment required

- ◆ Torque wrench -V.A.G 1410-



- ◆ Removing
- Remove the door trim ⇒ [page 189](#) .
- Remove the insulation ⇒ [page 192](#) .
- Remove the armrest ⇒ [page 193](#) .
- Unscrew the bolts -5- (2x).
- ◆ Tightening torque 2 Nm.
- Unscrew the bolt -4-.
- ◆ Tightening torque 2 Nm.
- Pull the front section -3- of the armrest -1- out of the guide -2-.
- Push down the cover -6- to the rear.
- Unplug the connector on the inside of the front section -arrow-.

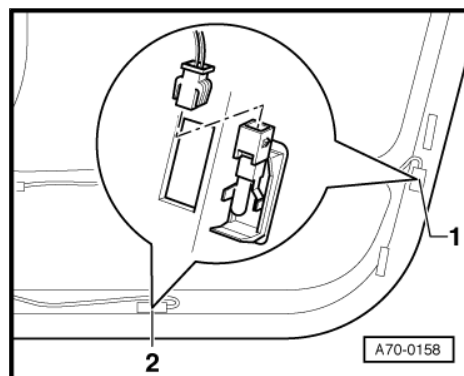


- ◆ Installing
- Install the window regulator switch module in the reverse order of removal.

Protected by copyright. Copying for private or commercial purposes, in part or in whole, is not permitted without the express consent of Audi AG. Audi AG does not accept any responsibility with respect to the correctness of the technical information. Copyright by Audi AG.

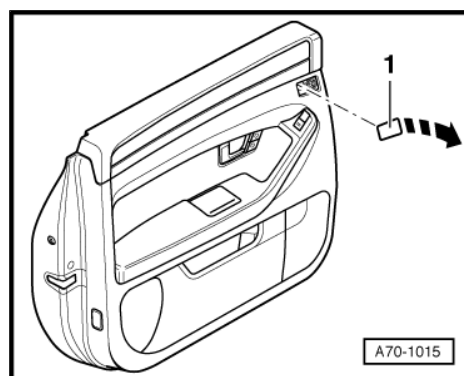
2.8 Removing and installing door warning light and footwell light

- Remove the door trim ⇒ [page 189](#) .
- Use a screwdriver to prise out the door warning light -1- from underneath and pull out the door warning light -1- with the cable.
- Unplug the connector at the door warning light -1-.
- Use a screwdriver to prise out the exit light -2- at the front and pull out the exit light -2- with the cable.
- Unplug the connector at the exit light -2-.



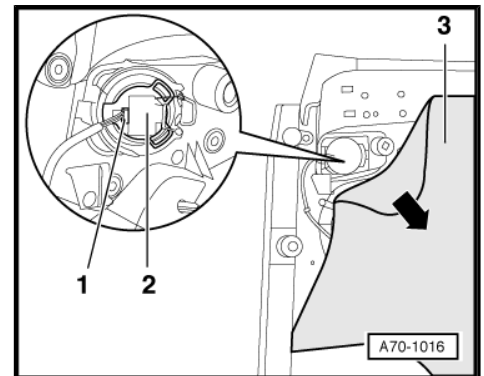
2.9 Removing and installing treble loudspeaker trim

- Use a screwdriver to carefully prise out the treble loudspeaker trim -1- in arrow direction.



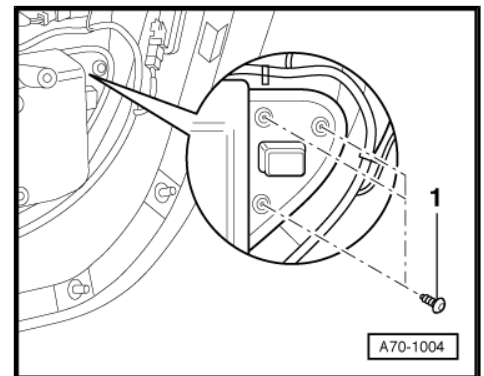
2.10 Removing and installing treble loudspeaker

- Remove the door trim => [page 189](#) .
- Fold aside the insulation -3- in arrow direction.
- Unplug the connector -1-.
- Unclip the treble loudspeaker -2-.



2.11 Removing and installing triangular trim

- ◆ Removing
- Remove the door trim => [page 189](#) .
- Unscrew the bolts -1- (3x).
- Detach the triangular trim on the front side of the door trim.



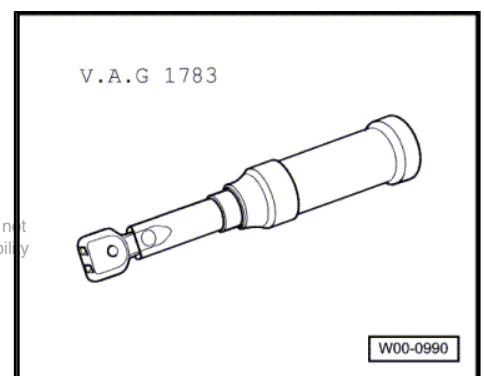
2.12 Removing and installing interior door handle with central locking system switch

Special tools and workshop equipment required

- ◆ Torque wrench -V.A.G 1783-

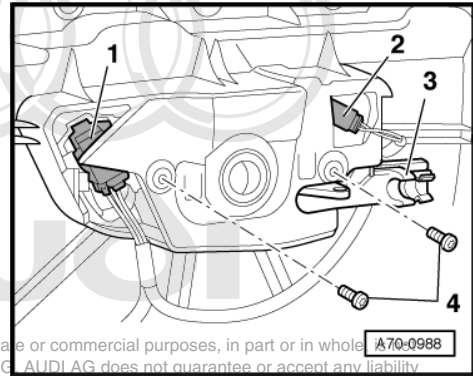
Audi

Protected by copyright. Copying for private or commercial purposes, in part or in whole, is not permitted unless authorised by AUDI AG. AUDI AG does not guarantee or accept any liability with respect to the correctness of information in this document. Copyright by AUDI AG.





- ◆ Removing
 - Remove the door trim ⇒ [page 189](#) .
 - Remove the insulation ⇒ [page 192](#) .
 - Unplug the connector -1-.
 - Unplug the connector -2-.
 - Unscrew the bolts -4- (2x).
- ◆ Tightening torque 2 Nm.
- Take out the interior door handle on the front side of the door trim.
- ◆ Installing
 - Make sure the cable of the connector -2- is positioned behind the holder -3-.
 - Install the interior door handle in the reverse order of removal.

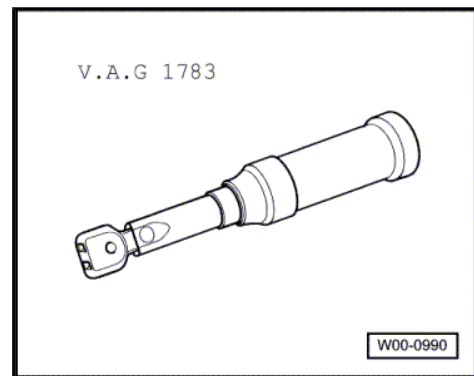


Protected by copyright. Copying for private or commercial purposes, in part or in whole, is not permitted unless authorised by AUDI AG. AUDI AG does not guarantee or accept any liability with respect to the correctness of information in this document. Copyright by AUDI AG.

2.13 Removing and installing hinged pocket with mount

Special tools and workshop equipment required

- ◆ Torque wrench -V.A.G 1783-



1 - Hinged pocket with mount

◆ Removing

- Remove the door trim ⇒ [page 189](#) .
- Remove the insulation ⇒ [page 192](#) .
- Unscrew the bolts -3- (5x).
- Unscrew the bolts -4- (7x).
- Take out the hinged pocket with mount -1- on the front side of the door trim -2-.

◆ Installing

- Install the hinged pocket with mount -1- in the reverse order of removal.

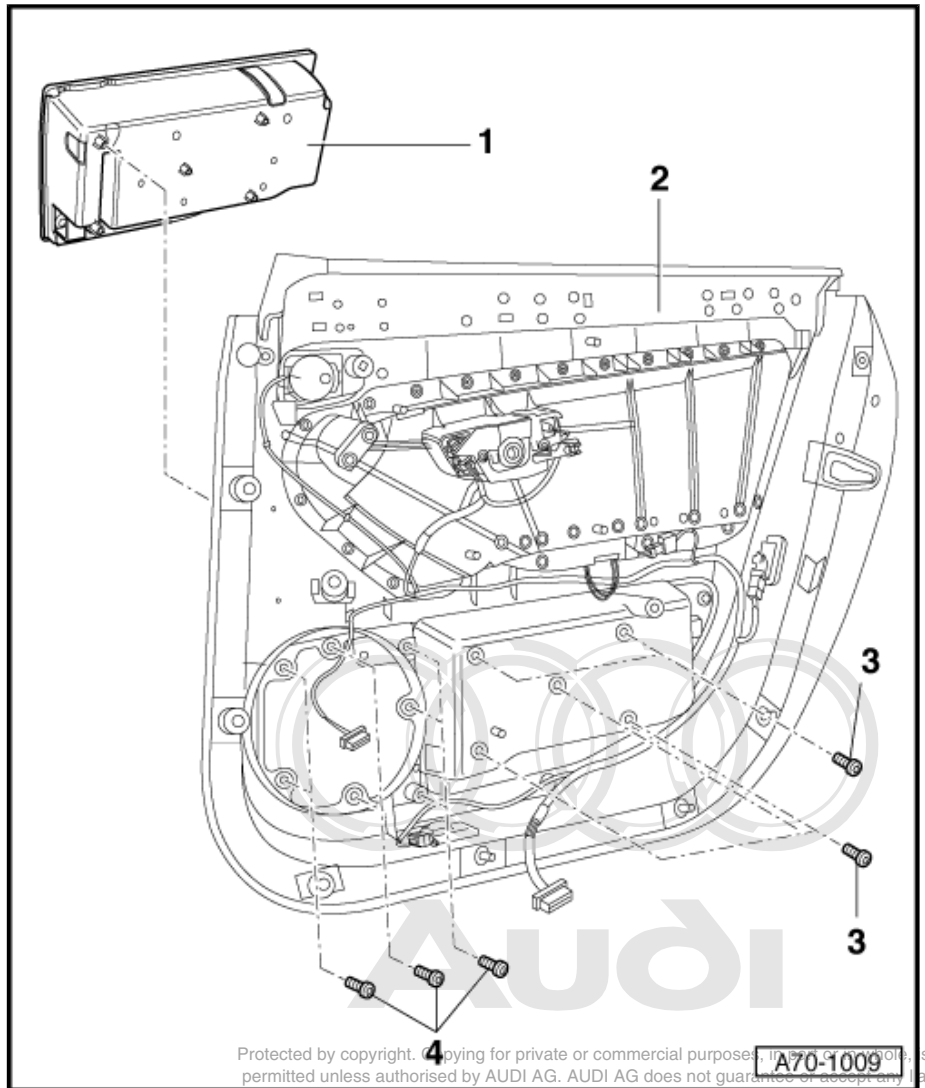
2 - Door trim

3 - Bolts (5x)

- Tightening torque 2 Nm.

4 - Bolts (7x)

- Tightening torque 2 Nm.



Protected by copyright. Copying for private or commercial purposes, in any form or by any means, is not permitted unless authorised by AUDI AG. AUDI AG does not guarantee or accept any liability with respect to the correctness of information in this document. Copyright by AUDI AG.

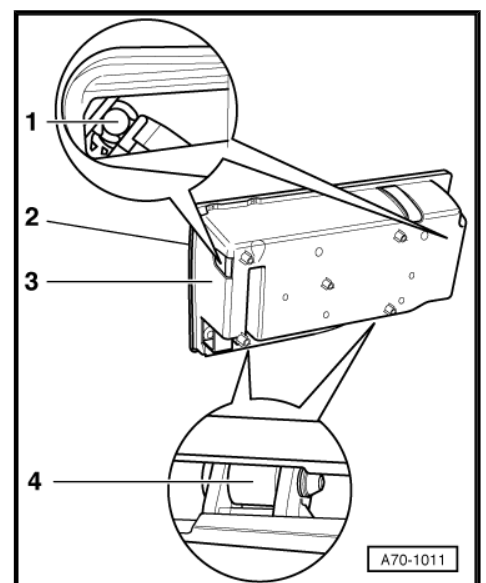
2.14 Removing and installing hinged pocket without mount

◆ Removing

- Remove the door trim ⇒ [page 189](#) .
- Remove the insulation ⇒ [page 192](#) .
- Remove the hinged pocket with mount ⇒ [page 196](#) .
- Use pliers to pull out the pins -1- (2x).
- Use a screwdriver to prise out the pins -4- (2x).
- Detach the hinged pocket -2- from the mount -3-.

◆ Installing

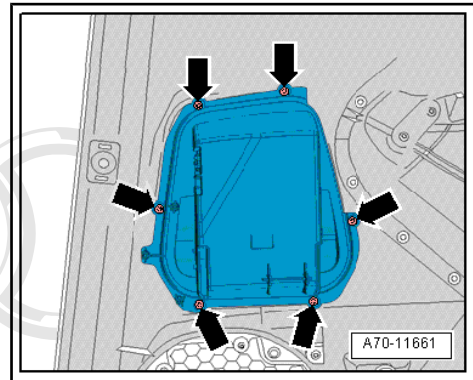
- Install the hinged pocket -2- in the reverse order of removal.



A70-1011

2.15 Removing and installing glasses compartment - vehicles with long wheelbase only

- ◆ Removing
 - Remove the door trim ⇒ [page 189](#) .
 - Remove the insulation ⇒ [page 192](#) .
 - Vehicles with ambient lighting: Remove the voltage converter for the rear door ambient lighting ⇒ Electrical system; Rep. gr. 97 .
 - Screw out the bolt -arrows-.
- ◆ Tightening torque 2 Nm.
- Take out the glasses compartment to the front of the door trim.
- ◆ Installing
 - Install the glasses compartment in the reverse order of removal.



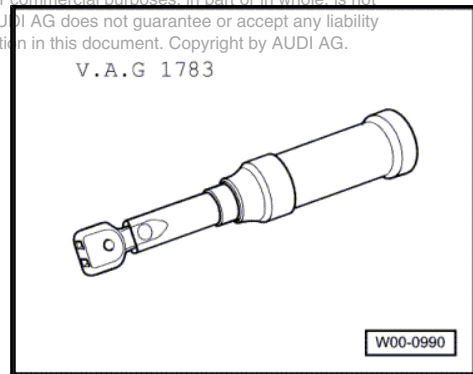
2.16 Removing and installing mechanical sun blind

Special tools and workshop equipment required

- ◆ Torque wrench -V.A.G 1783-

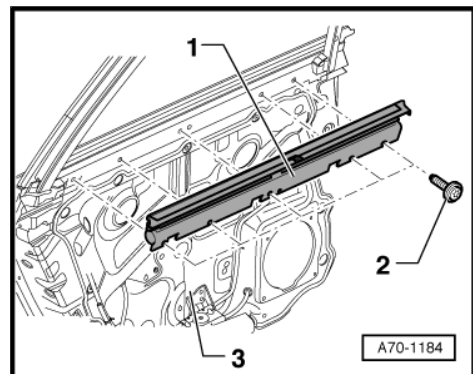
Protected by copyright. Copying for private or commercial purposes, in part or in whole, is not permitted unless authorised by AUDI AG. AUDI AG does not guarantee or accept any liability with respect to the correctness of information in this document. Copyright by AUDI AG.

V.A.G 1783



Removing

- Remove the door trim ⇒ [page 189](#) .
- Remove the insulation ⇒ [page 192](#) .
- Screw out the bolts -2- (5x).
- Detach the sun blind -1- from the door -3-.



Installing

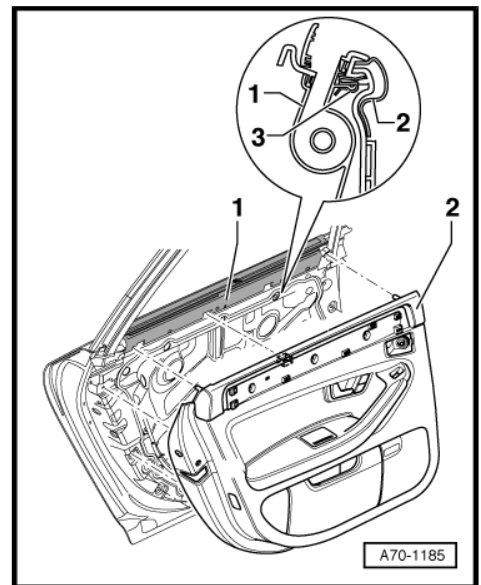
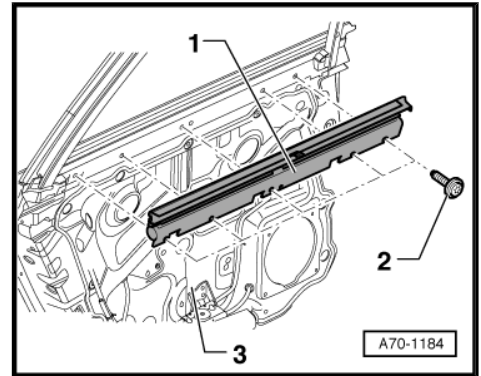
- Attach the sun blind -1- to the door -3-.
- Tighten the bolts -2- (5x) to the specified torque.
- Make sure all clips are in position on the back of the door trim.
- Replace damaged clips => [page 191](#)
- Engage the Bowden cable for the interior door handle => [page 191](#)
- Plug in the connector at the window regulator control unit => [page 191](#)
- Plug in the connector at the bass loudspeaker => [page 191](#)
- Move the door trim -2- to the sun blind -1- and position the door trim.
- Clip the door trim -2- to the sun blind -1- (4 clips).

3 - Clips

- Install the door trim => [page 189](#).

Tightening torque:

Sun blind to door: 3 Nm



2.17 Removing and installing hook for sun blind

Removing

- Press in the pin -2- (2x) slightly in arrow direction.
- Detach the hook -1- from the door frame -3-.

