

Isaac Payano  
New York City, 2016

## The New York Cosmos should move into Wien Stadium in NYC by Spring 2017



The New York Cosmos are one of the premier historical soccer clubs in the United States, with eight North American Soccer League (NASL) championships and a combined regular season average attendance (since 1971) of 30,000+. Presently, they are struggling with attendance at Hofstra's Shuart Stadium in Nassau County on Long Island, New York all because of one main reason: **location (and its distance from NYC)**. All successful professional sports teams of the NY metro area play within 10 miles of the center of Manhattan, near mass public transportation, with the richest teams playing within 8 miles. The Cosmos play over 20 miles out. They are far away from the majority of the fanbase and popular city amenities.

Furthermore, the overall experience of Shuart Stadium is unappealing. The venue is not comparable to any of the state-of-the-art sports facilities in the metro area that people are accustomed to. On average, since the 1970s, the Cosmos' attendance at Hofstra has been within the 5,000 range. While a decent attendance for some sports teams, it is uninspiring for a club of the stature and aspiration of the Cosmos, especially in New York. Even with that amount, the venue appears empty.

That said, there is no way around it: The New York Cosmos need to move, just like they did in 1974. When the Cosmos were at the top of their game in the late 1970s and 1980s, they played **within 8 miles** of the center of Manhattan: at Downing Stadium, Yankee Stadium, Shea Stadium, and their long term home Giants Stadium (in New Jersey). The New York Yankees, Mets, Giants, and Jets are among the richest sports teams in the world, greatly influenced by where they play. Location, location, location is the name of the game. If the Cosmos want to be a true player once again in the New York market, then they need to get into the center:



Seamus O'Brien, who as owner has done a great job of rebuilding the Cosmos' name (especially with Giovanni Savarese as Sporting Director and Head Coach of a wonderful team), should read these words and highly consider what I can share with him for the betterment of the club.

Wien Stadium at the Baker Athletic Complex (at Columbia University) - Capacity: 17,000.  
(Tarp / Drape for soccer to about 12,000-14,000)

Wien Stadium is the place to go for a successful reboot:



There are numerous scenarios that the club can “explore” regarding a move from Shuart, including possible temporary pop-up stadiums around the city (or playing in another venue in Nassau County - which would be like going in circles). The truth is, this is the most viable and forward thinking of all solutions as a temporary home. It is in Manhattan, New York County, New York City within 6 miles from the center (of the Empire). The stadium and infrastructure is already in place. It is financially accessible for a sports team. There is a strong soccer and collegiate community in the vicinity. All that is needed is a working relationship with the university, who would welcome an opportunity to showcase and update their venue; the use of the Nexxfield Turf or similar; two temporary bleacher stands on both ends; and some strategic design with tarp.

The Cosmos would be the only outdoor professional sports club in the New York metro area from the top five sports that actually plays in Manhattan. It would be the first time in the club's history that the first team would play in Manhattan during league play. (Note: The club played in New York County on Randall's Island, but the first team never played on the island of Manhattan. The last outdoor professional sports teams to play on the island were the Mets and Jets at the Polo Grounds in 1963).

Playing at Wien Stadium would reenergize the Cosmos. The venue would give the club a stellar platform to feature the championship team and demonstrate that they are a true New York club. By obtaining greater attendance at this venue, the club will gain significant strength with influential community leaders and fans all around the city, which in turn can lead towards a permanent stadium.

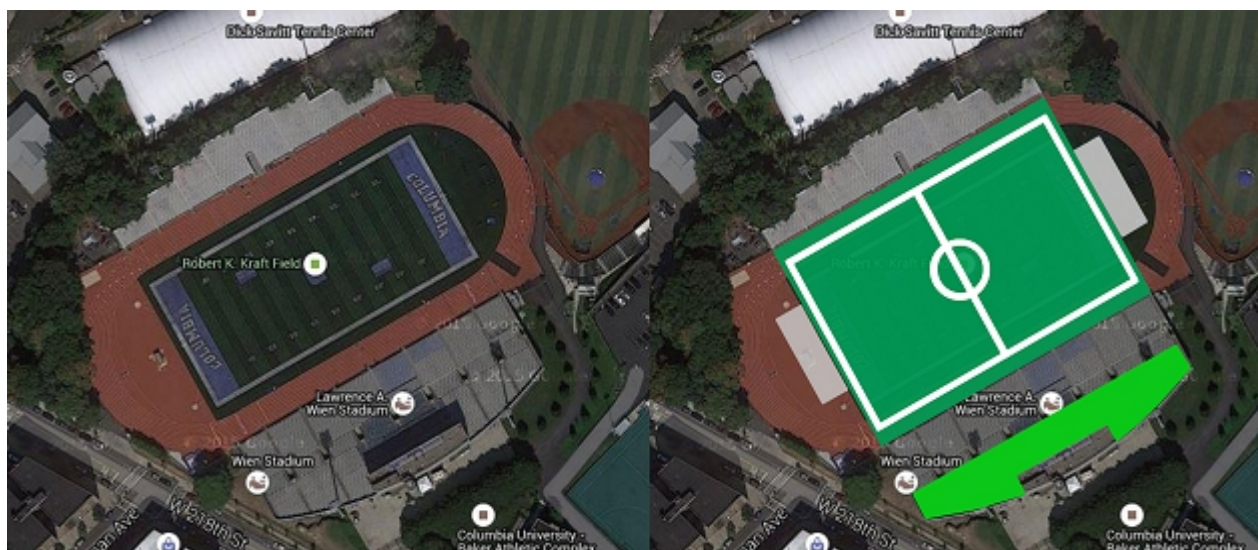
**This is the right move to make.**

Here's what Wien Stadium can look like with a smart redesign:



With the additional 3,000 seat bleachers (1,500 each), the total capacity for the stadium would be 20,000. Keep in mind that the northeast and southwest bleacher stands can remain all year long as they don't affect the football or track configuration. Still, the stands can be rollable to allow more freedom of space during football matches, and be shifted to the far ends of each side. Furthermore, the Nexxfield Turf (or similar) and the tarp are removable - creating a functional multipurpose space.

Here's another before and after of the venue:



Here are two more aerial views:



Here's an afternoon game, with the amazing backdrop of the Henry Hudson Bridge and Hudson River:



Here's a similar angle during a night game:



With the tarp, the main grand stand on the southeast, which has about 10,500 seats, can be limited to approximately 4,000 to 5,000 seats. This would make the total capacity with the bleachers to about 14,000 to 15,000, and without the bleachers to about 11,000 to 12,000.



This setup would create inspiring crowds for the club that can stimulate vast growth. As demand increases, the tarp can be removed. The club can potentially attract 20,000 fans at this venue.

**Wien Stadium is near the following:**

**Transportation:**

The NYC Subway 1 and A trains; Metro North Hudson Line (commuter rail); the NYC SBS Bx12 (bus rapid transit), Bx 7 bus, and M100 bus; Yellow and Green Taxis, and Black Cabs; Henry Hudson Bridge; Broadway Bridge; University Heights / 207<sup>th</sup> St Bridge; George Washington Bridge (to New Jersey); Major Deegan Expy (I-87); Henry Hudson Pky; Harlem River Drive; Saw Mill Pky; Cross Bronx Expy (I-95); by NYC's and New York state's longest street: Broadway (US Route 9); and Fordham Rd. Note: The SBS Bx12 and the Citi Bike system can be extended to Wien Stadium.

**Parks:** (two of the largest in the city, with access to multiple soccer fields):

Inwood Hill Park and Van Cortlandt Park (where the club can provide soccer clinics to the community).

**Universities:**

Columbia University, Fordham University, Manhattan College, College of Mt. Saint Vincent, Monroe College, CUNY (Lehman College, Bronx Community College, and City College), among others.

**Amenities:** Multiple restaurants, shopping areas, parking, and night life.

The club can negotiate with the nearby parking areas (mainly run by the city and state, Time Warner Cable, Columbia University, and the River Plaza Mall) to use some of the space during game nights similar to how the Bronx Terminal Market (aka the Gateway Mall) in the Bronx is utilized during Yankees games.



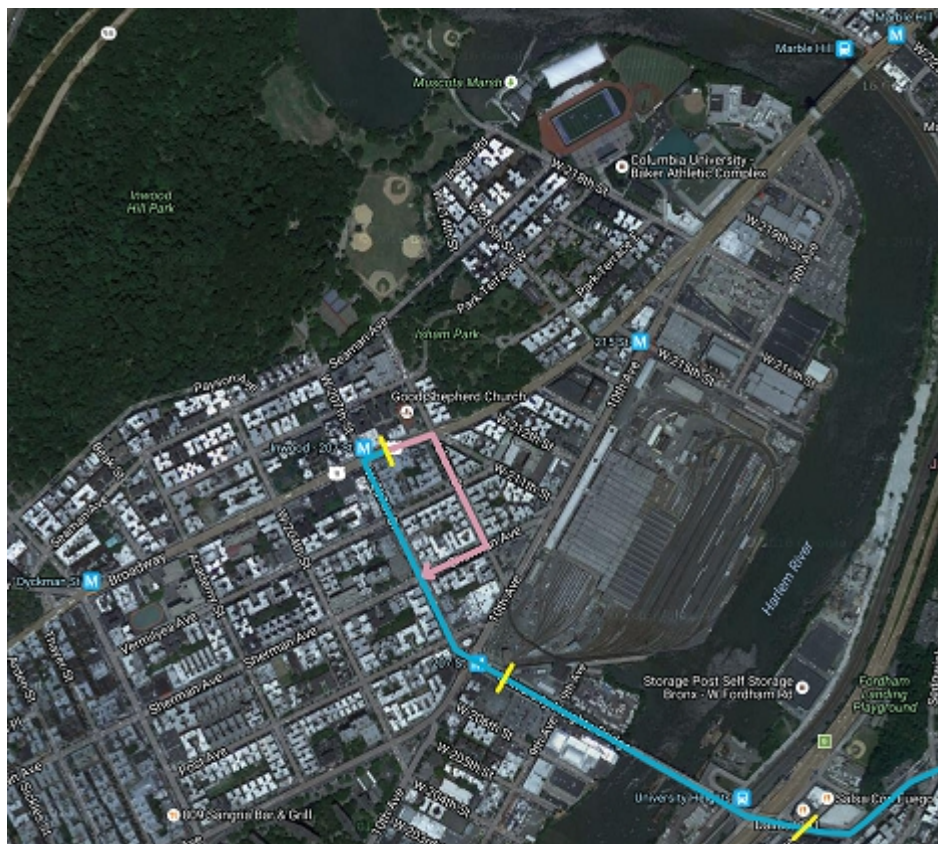
In the future, the club can even work with Columbia University to build an underground parking level below Rocco B. Commiso Soccer Stadium and the Field Hockey area (similar to Belson Stadium at St. John's University), or a four level parking space with ground level restaurants and a rooftop park (and even a hotel and office space) above the garage used by the Allen Hospital:



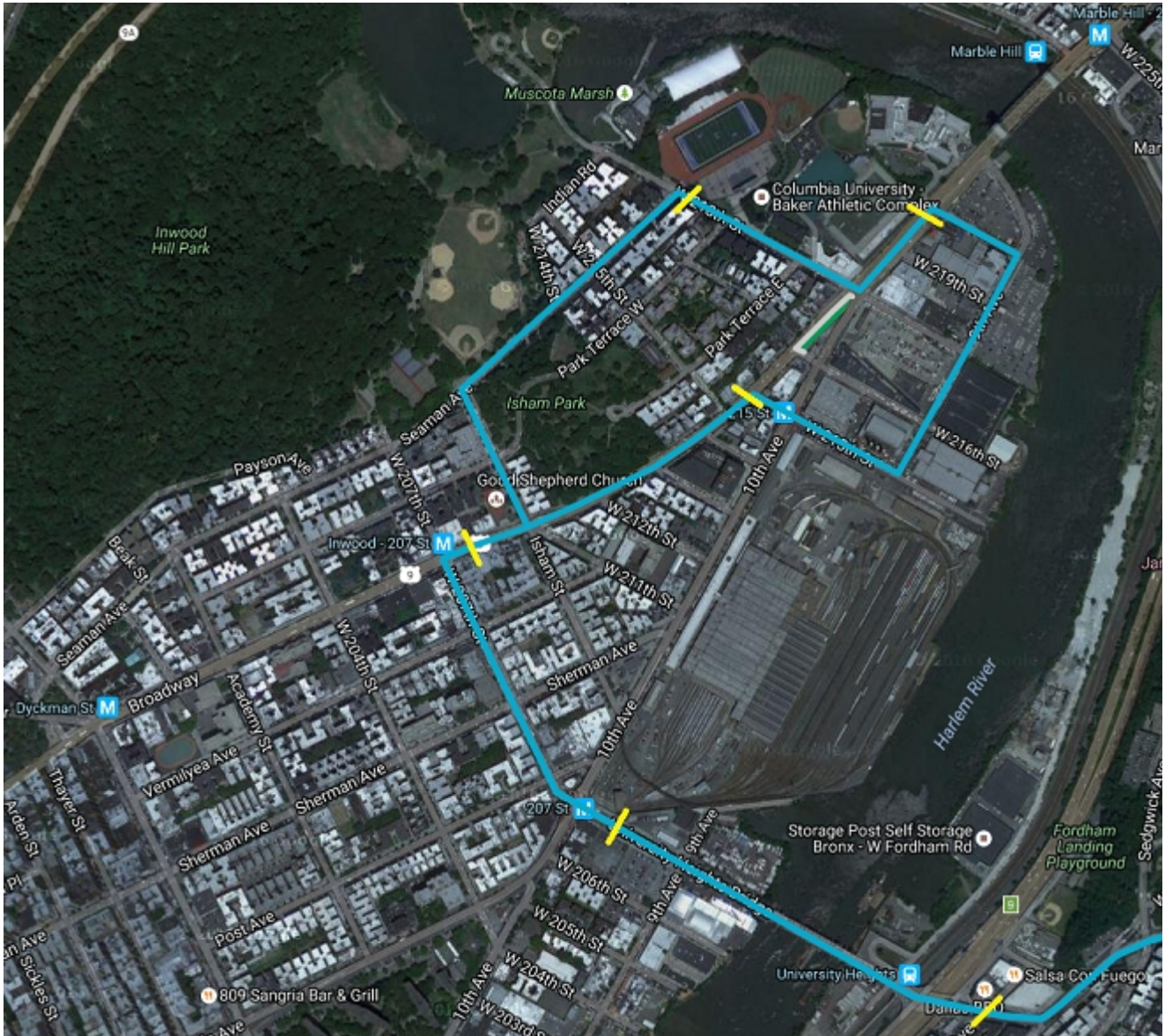
As already mentioned, the Metropolitan Transportation Authority (MTA) can extend the SBS Bx12 (bus rapid transit) to Wien Stadium. The bus line connects to 12 trains (NYC Subway: A, 1, 4, D, B, 2, 5, 5 to Dyre Ave, and 6 trains; and Metro North: Hudson Line, Harlem Line, and New Haven Line); the Bay Plaza, Fordham Rd, and 207<sup>th</sup> St shopping districts; Pelham Bay Park, Bronx Park (Bronx Zoo and the New York Botanical Garden), the Harlem River waterfront, and Inwood Hill Park:



The bus' final stop is by Broadway between 207<sup>th</sup> St and Isham St, several blocks from Wien Stadium:



Similar to the Co-op City end in the east (as shown in the above map), the SBS Bx12 articulated bus can make a northern loop (going counter clockwise) in the west, adding four stops - one by 215<sup>th</sup> St and Broadway near the 1 train and the MTA bus depot, one by 220<sup>th</sup> and Broadway by the Allen Hospital, another by 218<sup>th</sup> St and Seaman Ave adjacent Wien Stadium, and one more by 207<sup>th</sup> St and Broadway (heading in the opposite direction back towards Fordham Rd).

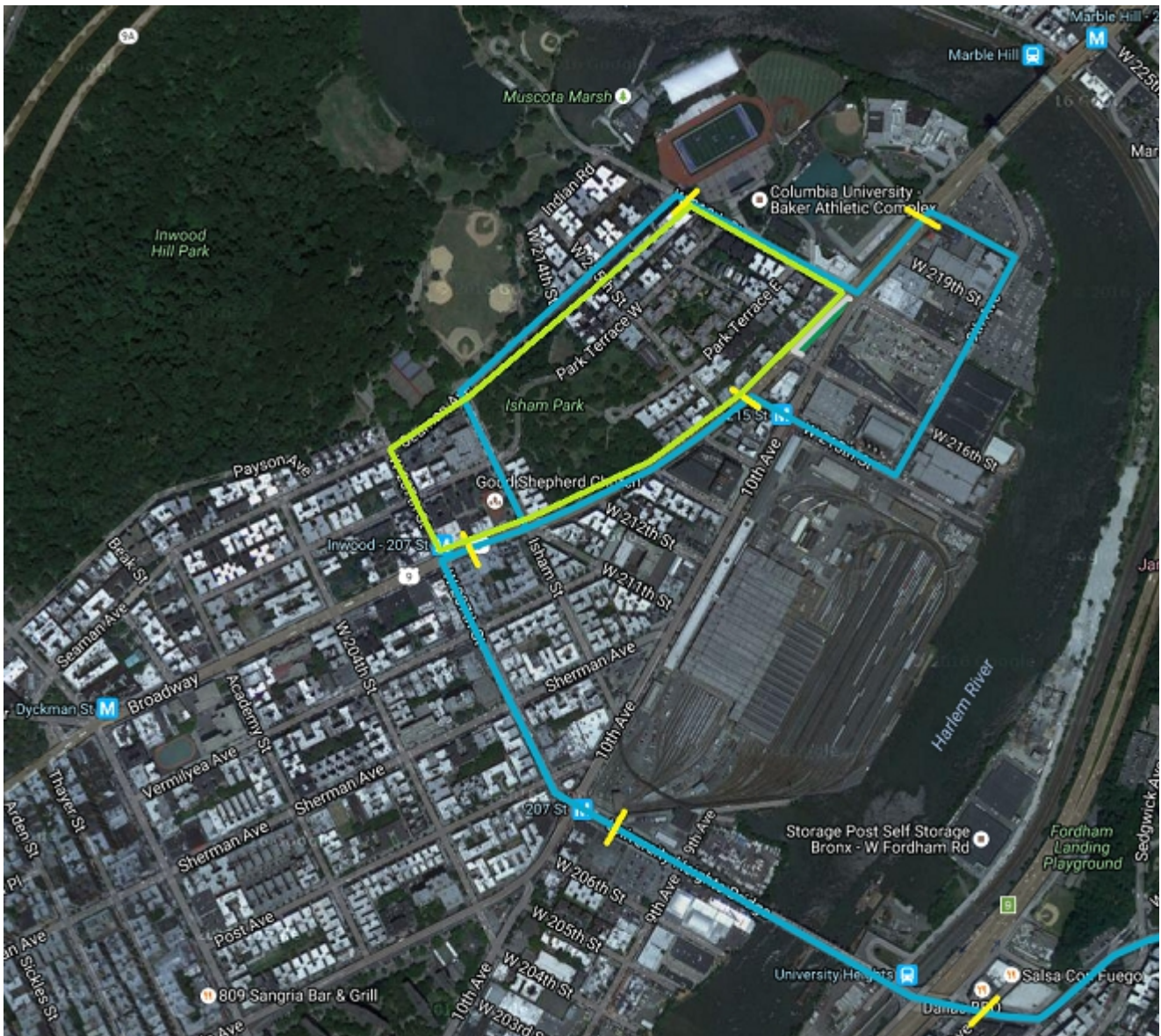


In addition to connecting thousands to Wien Stadium and the entire Baker Athletic Complex on an annual basis, similarly to how the SBS M60 does with Columbia University at 116<sup>th</sup> St, this SBS Bx12 extension links commuters to the residential area north of Isham Park, the north side of Inwood Hill Park, the Allen Hospital, and the manufacturing area east of 10 Ave (for various city workers), and it gives riders more proximity to the River Plaza Mall over the Broadway Bridge.

Keep in mind that the area where the loop runs isn't heavily transited by vehicles, so the SBS Bx12 in this section doesn't necessarily need a designated bus lane to help speed bus time. It can run in the flow of traffic, making these limited stops.

The map shows the Inwood Hill Park area with the proposed Inwood Hill Park Loop (blue line) and the proposed Inwood Hill Park Loop Extension (red line). The loop starts at the Henry Hudson Bridge, goes south along the Hudson River, then east along the Broadway Bridge, and finally north along the University Heights Bridge. The extension goes from the Broadway Bridge, east along the Broadway Bridge, then south along the Broadway Bridge, and finally west along the Broadway Bridge. The map also shows the Inwood Hill Nature Center, Baker Field, Park Terrace West, Isham Park, Dyckman House, and Inwood 207 St. The proposed loop is shown in blue, connecting various points along the Hudson River and through the park area. A legend indicates that the blue line represents the proposed Inwood Hill Park Loop, and the red line represents the proposed Inwood Hill Park Loop Extension.

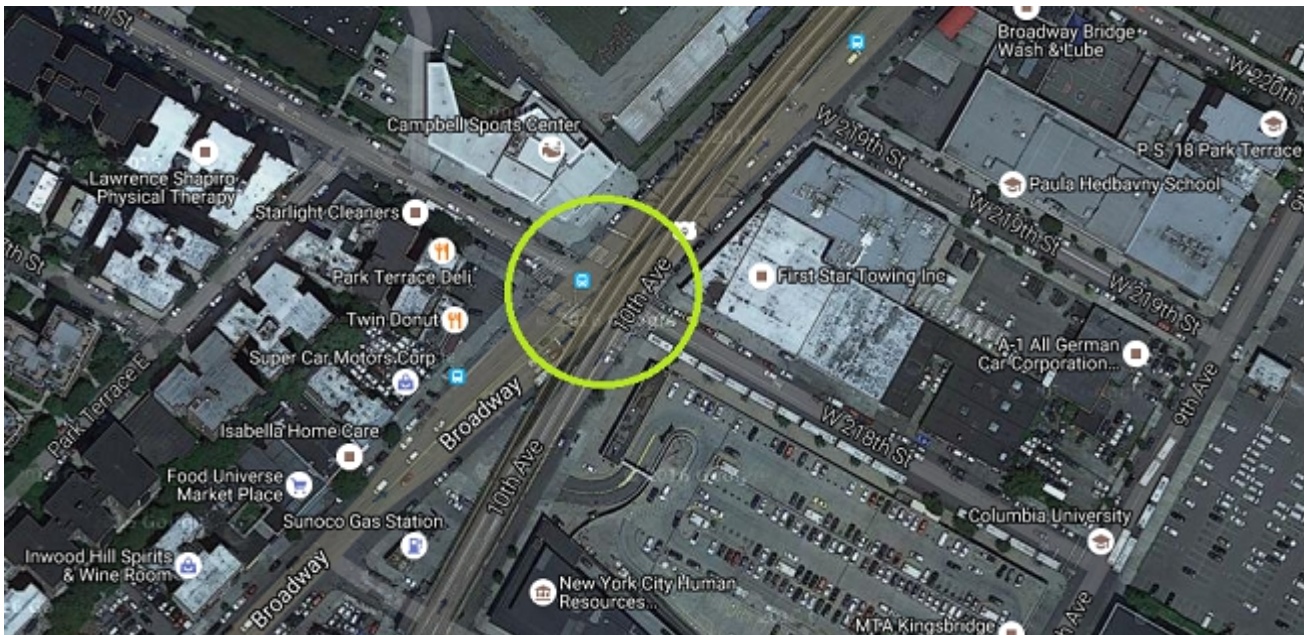
In addition, during game days, the club can run a free shuttle bus circulator (going clockwise) connecting the A train at 207<sup>th</sup> St (as well as the Isham St exit) directly to Wien Stadium, then to the 1 train at 215<sup>th</sup> St, and back around again.



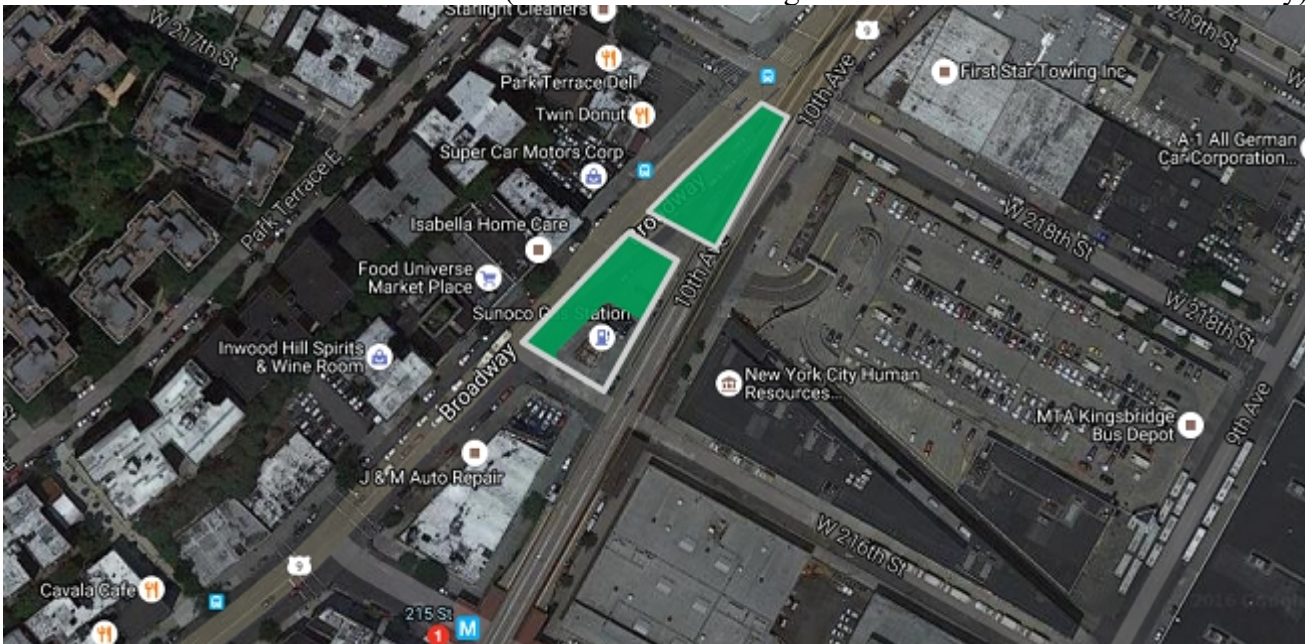
Though fans can walk about five to six blocks from the A train to Wien Stadium, this combination of the SBS Bx12 Inwood loop (going counter clockwise) and the game day or stadium event shuttle bus (going clockwise) would help them easily connect between the venue, the trains, and the shopping district of 207<sup>th</sup> St, alleviating pedestrian traffic in the area during events.

The new transportation enhancement would greatly improve Wien Stadium's ability to host various activities in the area: The stadium can potentially host together the Columbia Lions (football team); the New York Cosmos; the New York Lizards; the Fordham Rams (football team) (for bigger games); NHL, AHL, ECHL, and NCAA Hockey outdoor specials; NBA, NBA-D League, and NCAA Basketball outdoor specials; national and international rugby, gaelic football, and athletics; championship boxing, wrestling, and mixed martial arts; as well as concerts and festivals.

Meanwhile on the corner of 218<sup>th</sup> St and Broadway, a traffic improvement can be made with the NYC Department of Transportation (NYCDOT). Currently, there are no northbound left turns from Broadway or 10<sup>th</sup> Ave onto 218<sup>th</sup> St due to the existing street alignment, particularly underneath the elevated train. Also there are three streets converging on this corner: Broadway, 10<sup>th</sup> Ave, and 218<sup>th</sup> St.



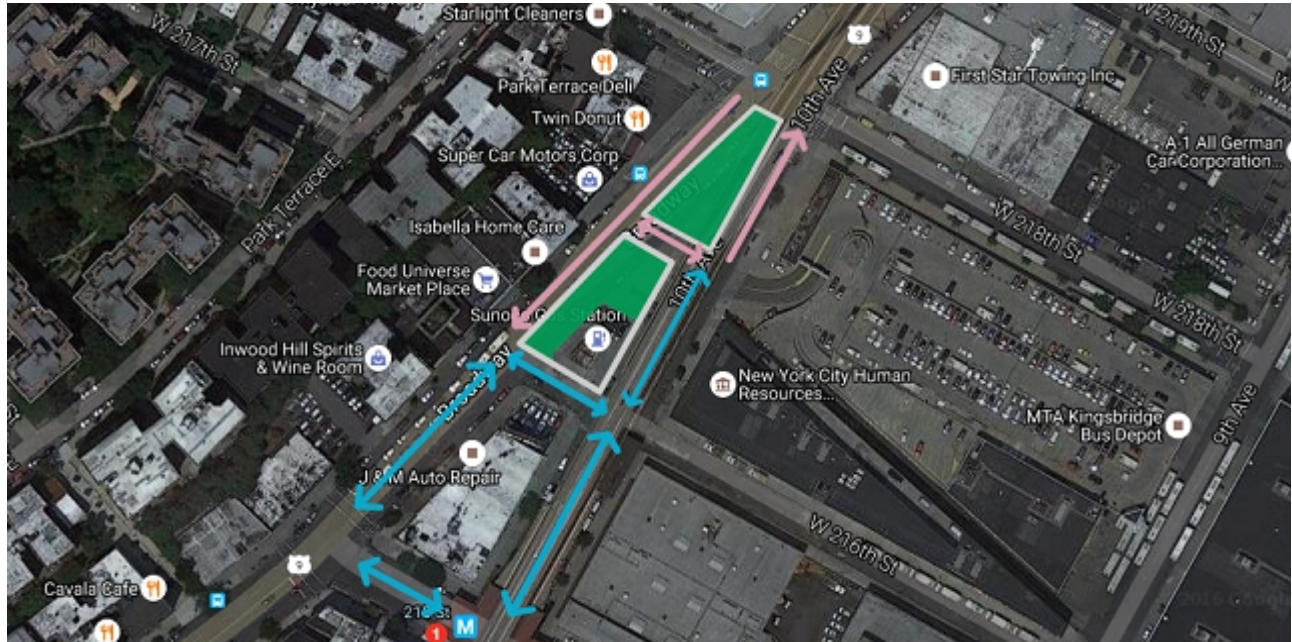
A simple and effective solution would be to close the northbound Broadway lane between 216<sup>th</sup> St and 218<sup>th</sup> St, creating a green space / plaza that partly extends under the elevated 1 train. This would shift the northbound vehicles from Broadway to the east onto 216<sup>th</sup> St and then to the north on a one-way 10<sup>th</sup> Ave. between 217<sup>th</sup> St and 218<sup>th</sup> St. (Note: A similar configuration exists on 72<sup>nd</sup> St and Broadway).



Keep in mind that the space under the elevated train by 10<sup>th</sup> Ave and 216<sup>th</sup> St is wide enough for eastbound cars, buses, or trucks on 216<sup>th</sup> St to make a left (northbound) turn to 10<sup>th</sup> Ave. Also, this design would open up 217<sup>th</sup> St between Broadway and 10<sup>th</sup> Ave with a connection to the garage.

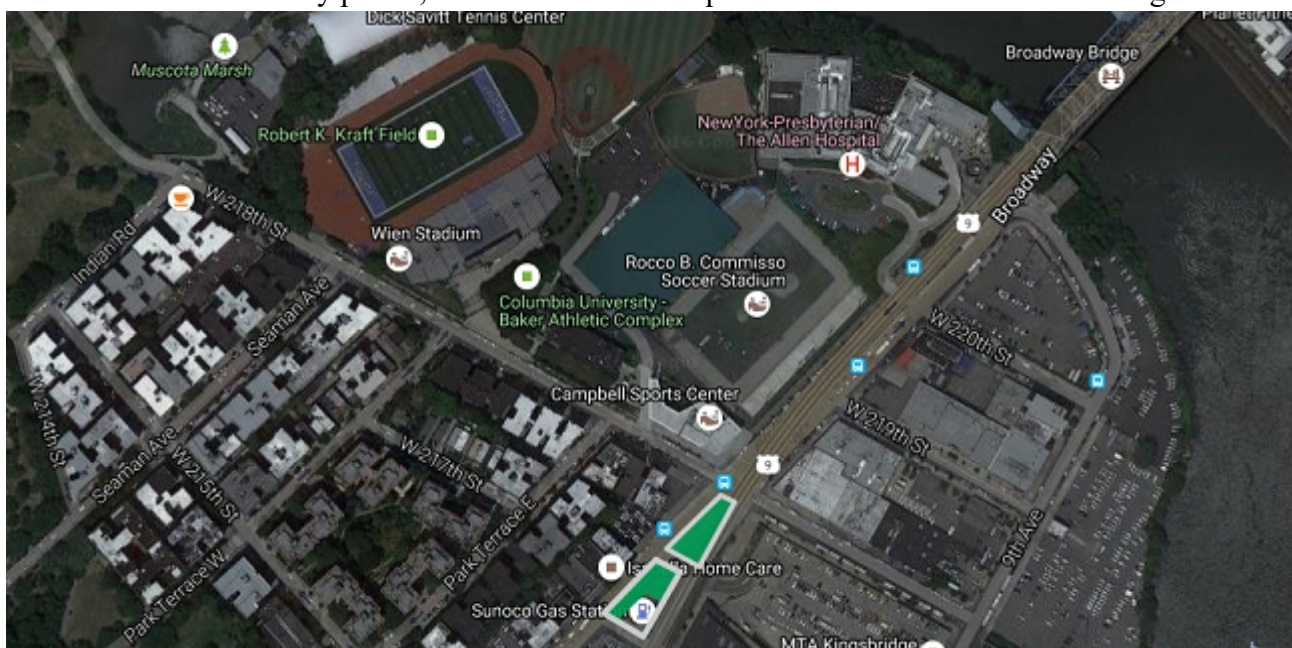
In addition, the west to east crosswalk on the north side of 218<sup>th</sup> st and Broadway would be moved about 10ft north to make more room for northbound vehicles turning left.

Here is a visual of the new street alignment. The only two streets that have changed are both Broadway and 10<sup>th</sup> Ave between 218<sup>th</sup> St and 216<sup>th</sup> St, with a new two-way 217<sup>th</sup> St in the middle. This improvement merges Broadway with 10<sup>th</sup> Ave heading north by way of either 215<sup>th</sup> St or 216<sup>th</sup> St, and heading south by way of 217<sup>th</sup> St, 216<sup>th</sup> St, or 215<sup>th</sup> St. With this redesign, northbound vehicles can now make a left onto 218<sup>th</sup> St, with a designated traffic signal, and a three street bottleneck is eliminated.

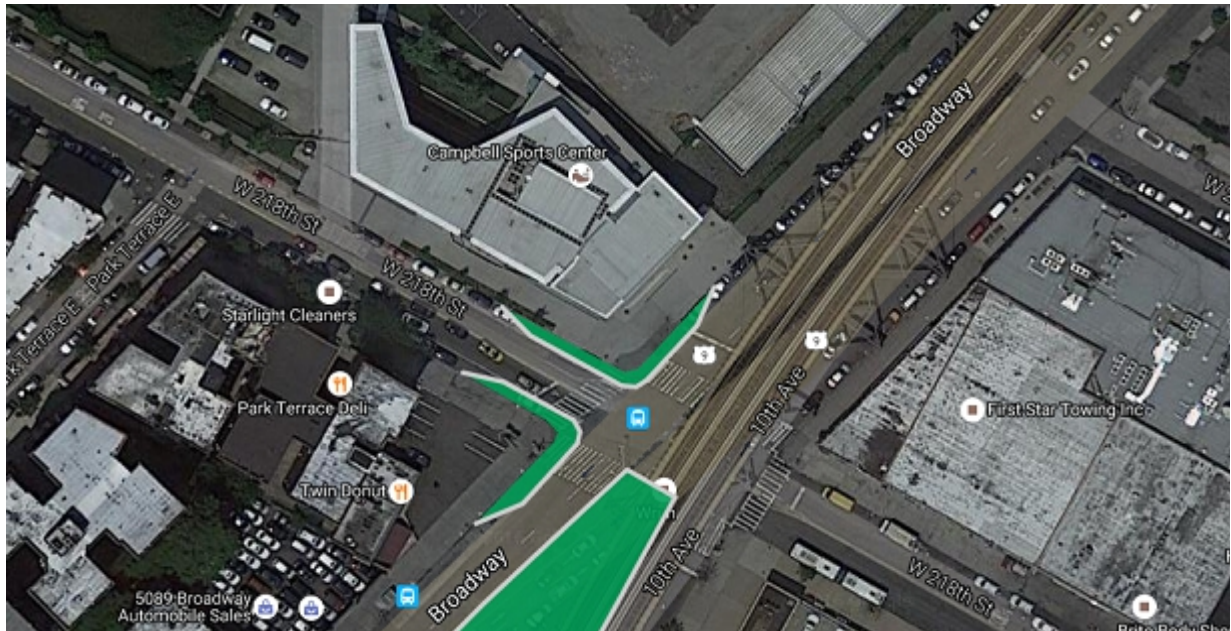


The gas station located by 216<sup>th</sup> St and 10<sup>th</sup> Ave isn't affected as customers can still enter from either of those two streets. Also, the northbound Bx7 and Bx20 bus station can be relocated from Broadway and 218<sup>th</sup> St to the southside of 10<sup>th</sup> Ave near the corner of 218<sup>th</sup> St, just a few feet away.

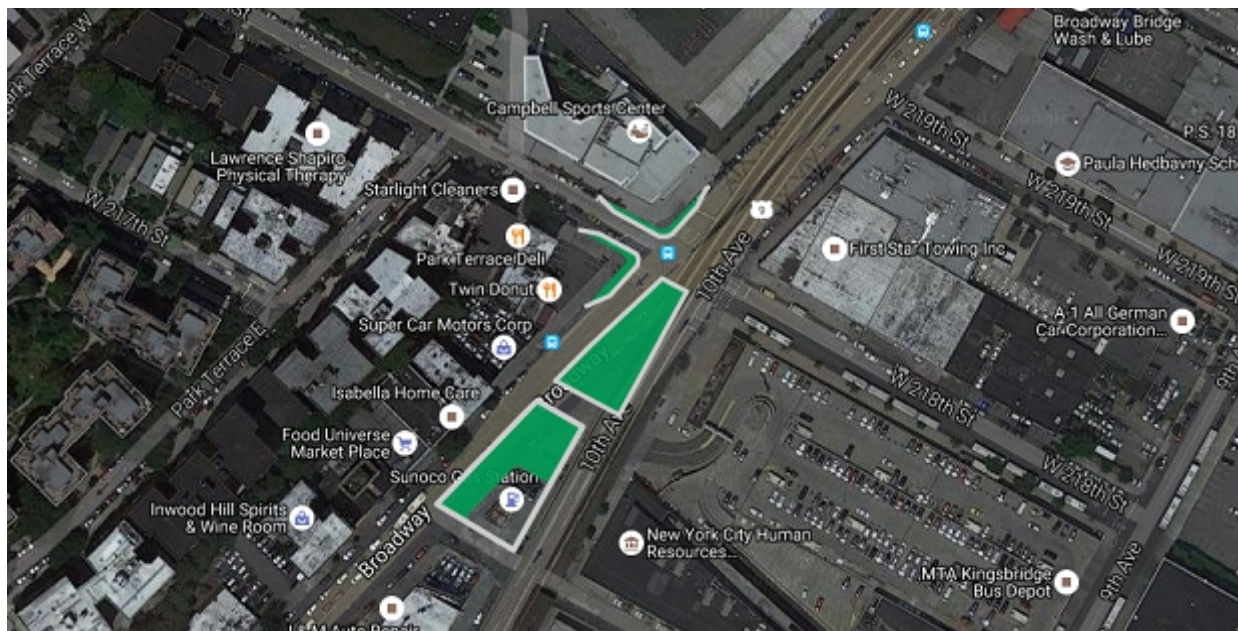
The over a quarter acre of new green space can be a great amenity for the area. Various plants, benches, chairs, tables, and food vendors (new entrepreneurs), perhaps even an open green market can be located there. A section of this space can even be dedicated for the Citi Bike program. Bike riders can travel to the stadium from other city points, or use the bikes to explore Inwood Hill Park and the neighborhood.



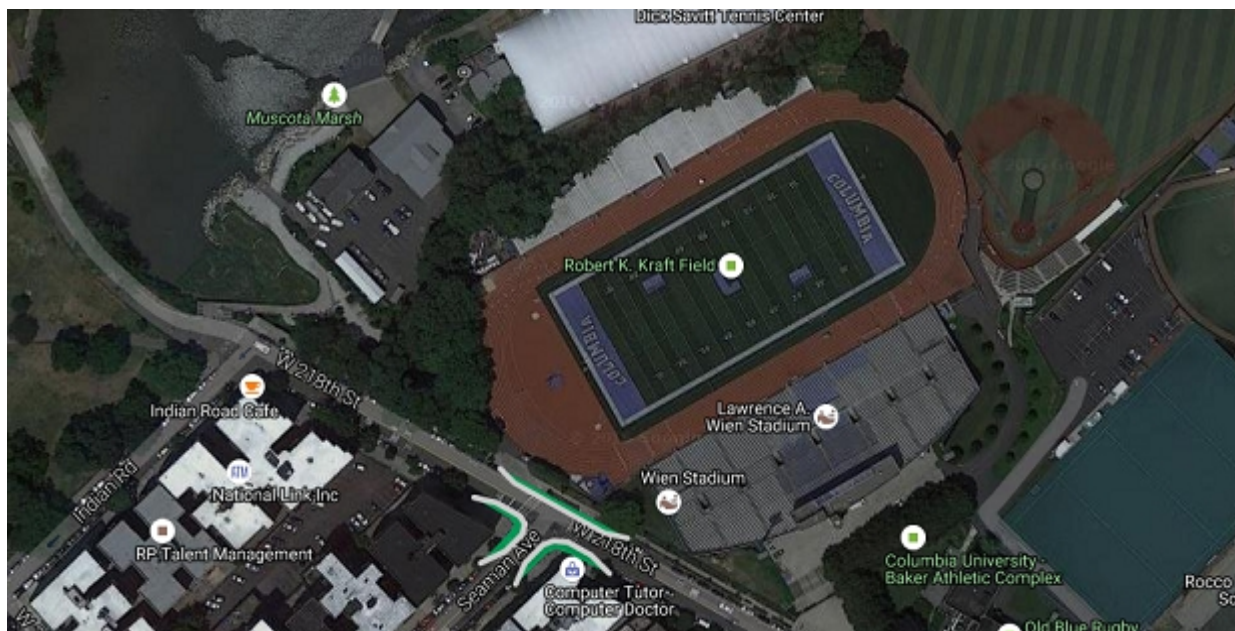
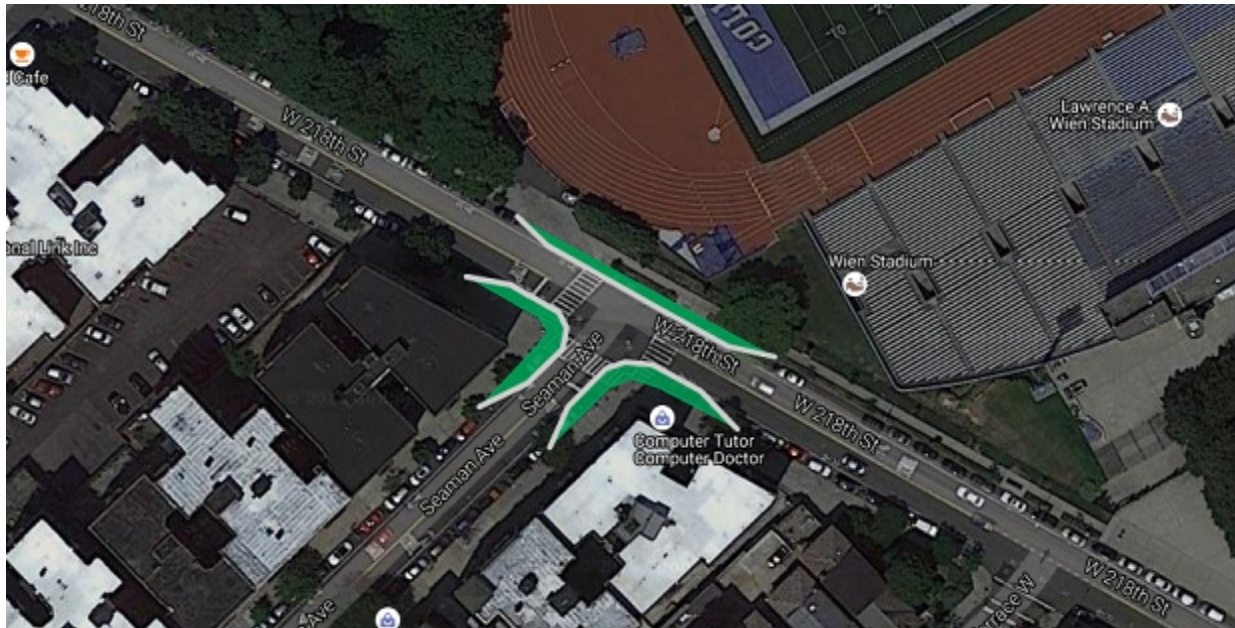
To complement this new plaza, the northwest and southwest corners of Broadway and 218<sup>th</sup> St can be widened to accommodate more pedestrians.



This improves safety for people crossing the streets and entering or exiting the plaza, or heading to the stadium and the entire Baker Athletic Complex.



Also, the sidewalk area in front of Wien Stadium by the corner of 218<sup>th</sup> St and Seaman Ave can be widened for additional improvements.



In both sections, the crosswalks can also be widened to allow better movement of pedestrians entering and leaving the stadium.

Combined, these new areas total over half an acre of green space that can benefit the surrounding community.

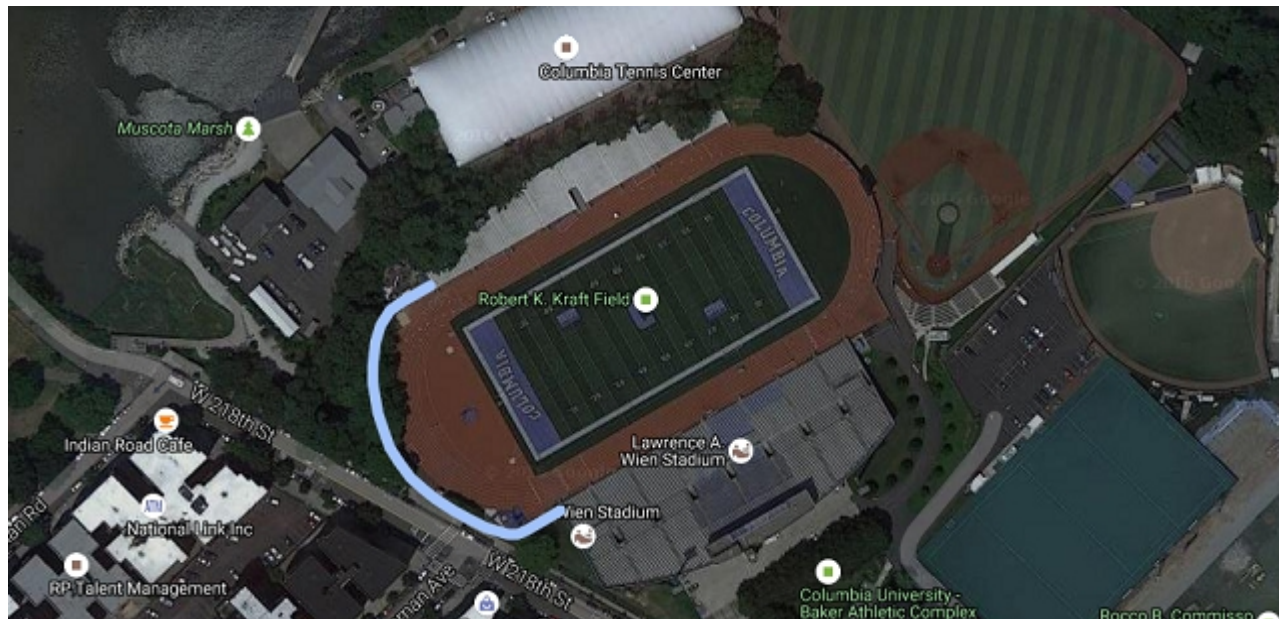
Furthermore, the Cosmos can buy chairs (possibly the Max30 or Max28 from SeatingSolutions, or similar) which can go on top of the bleachers in the grand stands (in the northwest and southeast) for the entire stadium. Making a sound investment of this kind, which pays for itself, would give the venue and the club a competitive edge in the New York market, attracting many season ticket buyers.



The color blue should be selected for the seats as it is a common color between Columbia University and the Cosmos.



To create more intimacy of space, the club can place greek / roman columns or arches, or a facade similar to Princeton Stadium or Harvard Stadium, as well as more bushes and trees surrounding the southwest exterior of Wien Stadium, facing 218<sup>th</sup> street:



This modest accent would provide better privacy for the venue.

There is actual precedence for this design. For comparison, between the 1930s and 1980s, for approximately 50 years, the original Baker Field / Columbia Stadium was also enclosed (post expansion from its initial 20,000 seat layout):



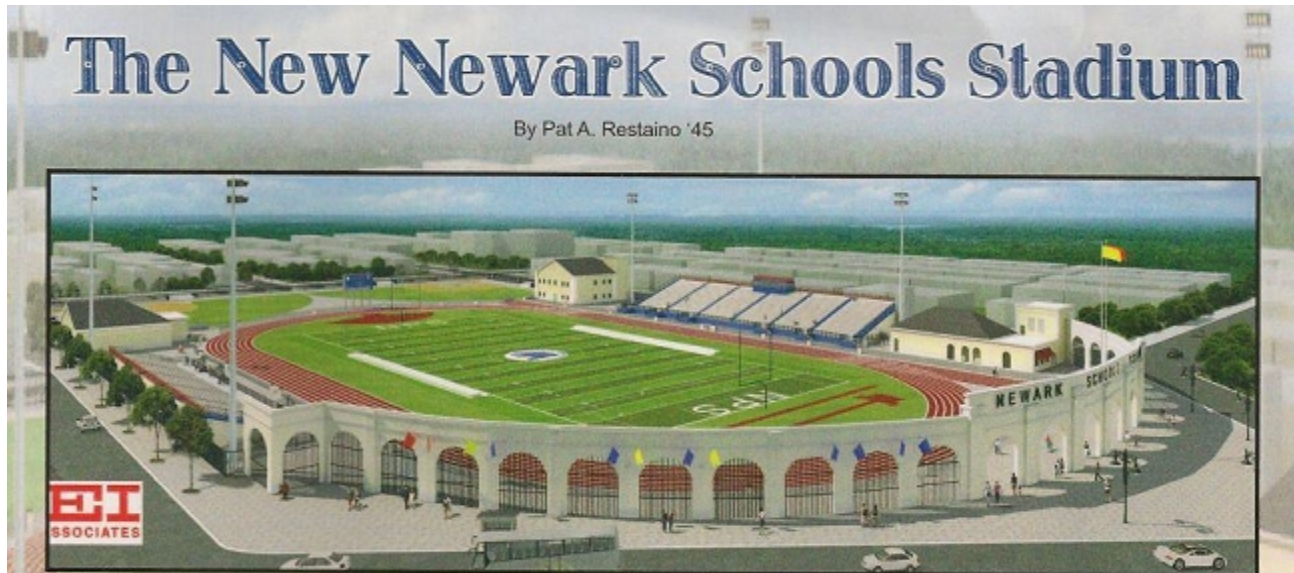


(Note: The original 35,000 seat stadium had several historical attendances in the 20,000 and 30,000 range, including sellouts).



On top of this, the majority of Ivy League school stadiums have some form of greek / roman arches integrated within their architecture. This design for Wien can be complimentary to the rest of the Ivy League football venues.

For a better visual, here is what the exterior of the New Newark Schools Stadium in Newark, New Jersey looks like. This is the kind of facade that can be placed at Wien:



Similar to Orlando City at the Citrus Bowl, and Coffey Field at Fordham University, the Cosmos can place flags and long banners / drapes with images and colors of the club (green, yellow, blue, and white) on the exterior of the stadium during game days. The same can be done for the Columbia Lions football team with their colors and images during their events.





Moreover, Rocco B Commisso Soccer Stadium is right next to Wien Stadium. This facility was used by the Cosmos' U-23 team in 2011 and U-18 team in 2012 for various games, and B team in 2016 for one game. This venue can potentially be the future home of the Cosmos B and Women's teams in the National Premier Soccer League (NPSL) and National Women's Soccer League (NWSL).



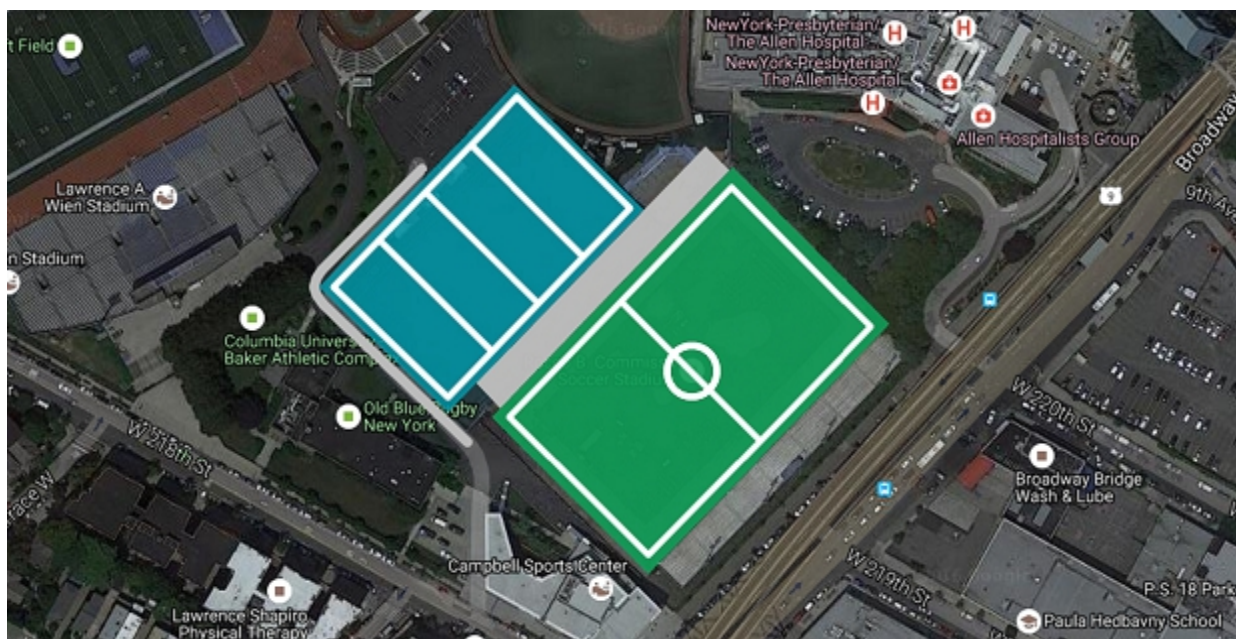
An aerial photograph of the Columbia Athletics indoor sports facility. The main feature is a large, white, dome-shaped structure with a green field visible inside. To the left, there's a green outdoor field with a stadium light. To the right, there's a parking lot with many cars and a curved road. In the foreground, there are railroad tracks and a blue and white train. The text "COLUMBIA ATHLETICS" is overlaid in the top left corner in a stylized blue font. A large blue arrow points from the text towards the dome structure.

## THE BUBBLE AT BAKER

This stadium has the potential to also be expanded. Currently at 3,500 seats, the club can increase the facility to 7,000 seats. Here's a view of the layout of the venue today:

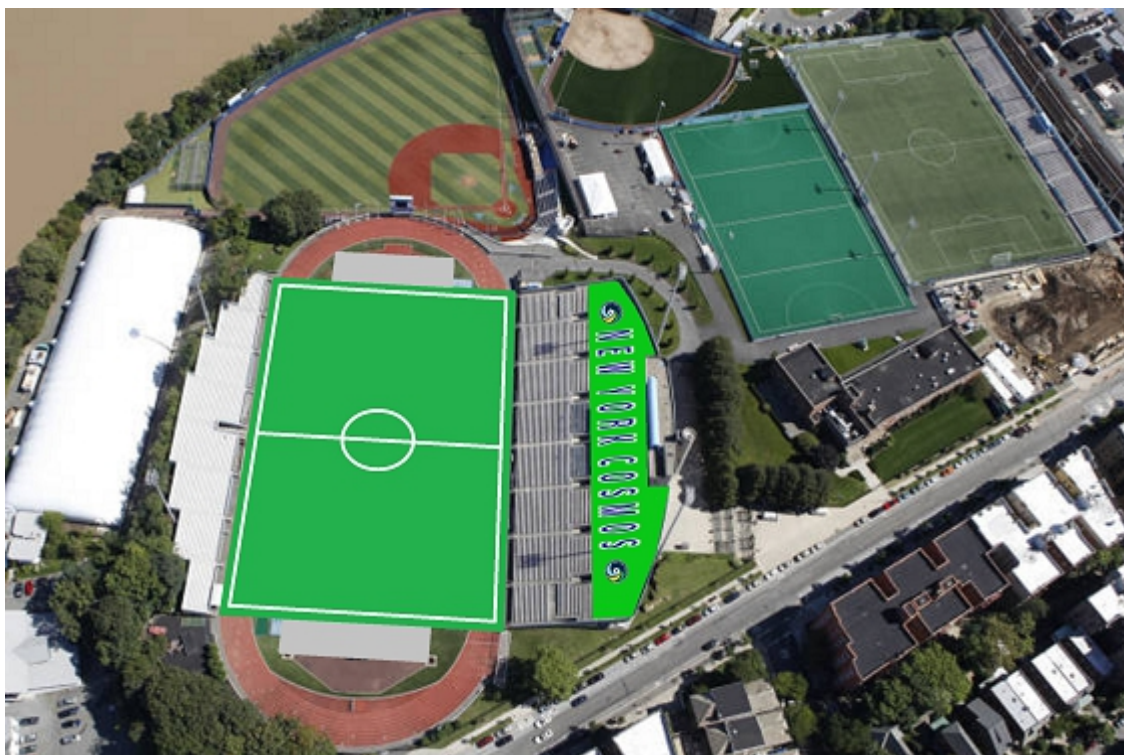


This is what the stadium can look like with approximately 7,000 seats. A new stand can be added on the west side of the facility, while the field hockey field can be shifted west:



Keep in mind, as previously mentioned, the club can also build parking space under these two fields (with an entrance and exit from Broadway).

Here's one more aerial view of Wien Stadium and the surrounding facilities, including Rocco B. Commisso Soccer Stadium:



Collectively, Wien Stadium at the Baker Athletic Complex is an ideal place for the Cosmos to relocate to and gain a fresh start.

Meanwhile, there are speculations that the club is considering a move to MCU Park in Coney Island.



Though an improvement over Shuart Stadium, the venue comes with its challenges and it is not an actual solution to vastly boost attendance or properly reboot the club. (The average for the Cosmos at this venue is 5,170).

- 1) As shown in the first graphic of this document, the venue is outside of the desirable NYC sports center as it is 15 miles out. This affects transportation and access on several levels.
- 2) The stadium is located at an endpoint of the city and not in a neutral location that can be conveniently accessed from all angles.
- 3) Only one highway is nearby - the Belt Parkway - with commuters from New Jersey, Staten Island, Brooklyn, Queens, and all of Long Island traveling in gridlock traffic to JFK Airport to the east of the stadium or towards the Verrazano Bridge and Newark Airport to the west.
- 4) There is no highway that runs north to south through the center of Brooklyn, and traveling on the local roads from north to south can take up as much as one hour in traffic. Though multiple NYC trains are available, but no commuter rail, the venue's location is not attractive for fans commuting by car.
- 5) The capacity of the venue is limited to 7,500 seats (with a max of around 10,000 people including a possible standing room area for 2,500 fans on temporary stands potentially placed at left field). There isn't room for vast growth.
- 6) The facility is primarily a baseball venue. While there are strategic configurations available to place soccer lines on a baseball field to showcase games, the fact still remains that the views from the stands aren't as optimal as they would be in a rectangular shaped stadium with stands parallel to the field.
- 7) The stadium doesn't have grass like the majority of baseball fields. It has a turf with two permanently visible colors (brown and green) to distinguish the infield and outfield. As previously seen with the club on two occasions there in 2015, and visible in the picture above, the field's color scheme can be unappealing during a soccer game. Either the field needs to be temporarily spray-painted green or the Nexxfield Turf or similar would have to go on top of it.
- 8) With turf it is harder to do quick turn-around conversions in comparison to grass.
- 9) The stadium is close to the Atlantic Ocean waterfront which can make the area very cold during the early spring or late fall seasons when the club is playing.
- 10) The area is also in a flood zone, which can play a serious role in affecting games.

That said, MCU Park is still a wonderful minor league baseball facility with a good surrounding atmosphere, especially in the summer, with the beach and nearby amusement parks. The club should use it as an alternative venue for a couple of US Open Cup games in the year to help spread their influence in the city and region. However, the main professional home field should be Wien Stadium as it is an all-around better option which doesn't have the issues above.

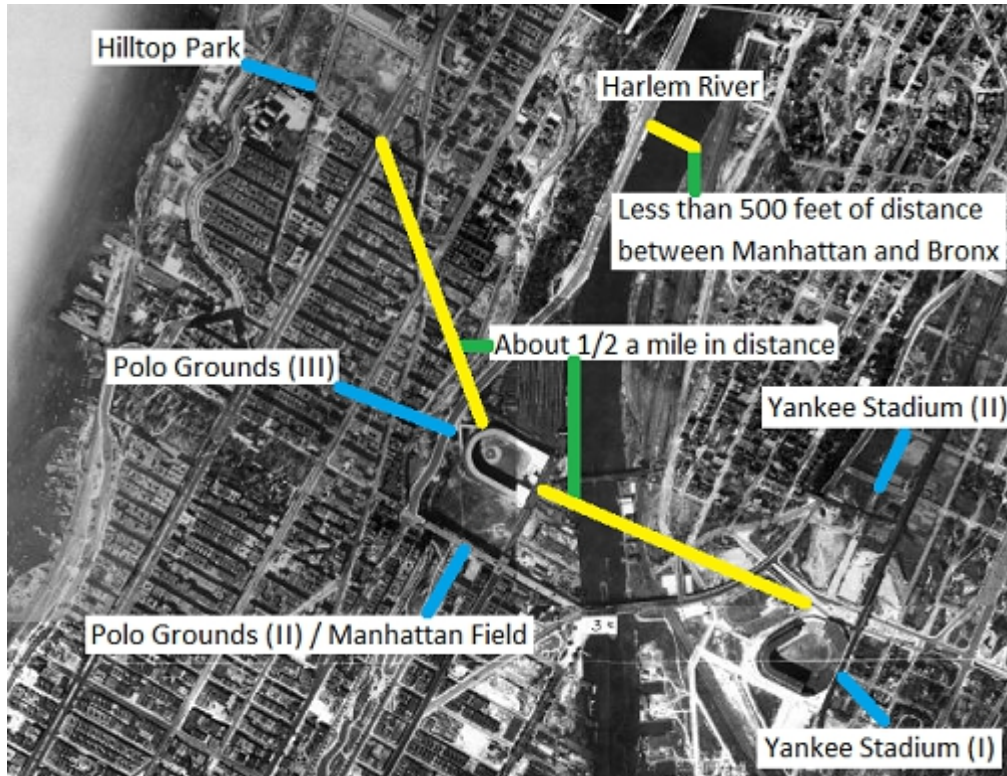
The only collective argument a resounding minority might have against Wien Stadium is the misguided belief that it is found in NYCFC "territory" (due to the misconception that New Jersey belongs to the New York Red Bulls, Long Island (proper) to the New York Cosmos, and Manhattan, Bronx, and Connecticut to New York City FC). The reality is that there are no boundaries in soccer nor any sport in the New York metro area. There are many Yankees fans in Queens and many Mets fans in the Bronx; there are plenty of Knicks fans in Brooklyn and Nets fans in Manhattan; there are Islanders fans in the Bronx and Manhattan, and Rangers fans in Brooklyn and Queens; and there are both Giants and Jets fans spread across the five boroughs despite them playing in New Jersey. Similarly there are many Red Bulls fans in NYC, NYCFC fans on Long Island and New Jersey, and Cosmos fans all around the metro area. Fans are everywhere in the city for all professional sports teams. All they want is accessibility (as shown in the first image with the 10 mile range).

And remember, the New York Cosmos originally played in NYC around the Harlem River area.

It's more than fine for sports teams in NYC to play near each other and sometimes in the same facility as proven in the past and present:

## Major league Baseball (MLB)

The New York Giants (of the National League) and the New York Yankees (of the American League) played near eachother for 55 years.



Before moving west across the country and becoming the San Francisco Giants, the baseball club was formed in NYC in 1883, joining the National League, as New York and eventually becoming the New York Giants by 1885. By 1890, the New York Giants moved from the first Polo Grounds, by 111<sup>th</sup> St and Fifth Ave in Manhattan, to the second Polo Grounds (originally called Brotherhood Park) on 155<sup>th</sup> St and Eighth Ave, eventually called Manhattan Field. By 1891, they moved to the third Polo Grounds just two blocks north by approximately 157<sup>th</sup> St and Eighth Ave, and remained there until 1957, playing in this area for 58 years. The area where the Polo Grounds (II and III) were located at (by Coogan's Hollow, which was below Coogan's Bluff, near Washington Heights) is part of the Harlem River waterfront which is shared with the Bronx. For the majority of its stretch, the Harlem River separates the two boroughs by less than 500 feet (which is less than a standard west to east Manhattan grid block at about 850ft) and is connected by 14 bridges (once 16 bridges) and three subway tunnels.

When the Baltimore Orioles of the American League decided to relocate to New York City in 1903, they made their way to Washington Heights by 165<sup>th</sup> St and Broadway, strategically near the Giants, and renamed themselves as the New York Highlanders (as they played on top of the hill, while the Giants played by the valley adjacent the river). The Highlanders' stadium was called Hilltop Park (and it was located at today's New York Presbyterian Hospital). The new venue was only half a mile away from the Polo Grounds. For ten years, between 1903 and 1912, the Highlanders called Hilltop Park their home. In fact, in 1911, the New York Giants played at Hilltop Park for a year, after an invitation from the Highlanders, while the Polo Grounds was being rebuilt due to a fire.

Between 1913 and 1922, for ten years, the Giants then shared the Polo Grounds with the Highlanders who by then were officially called the New York Yankees. Two teams from different leagues shared the same venue. In 1923, the Yankees moved into Yankee Stadium, right across the river into the borough

of the Bronx (which was once part of New York County until 1914, before becoming Bronx County). Between 1923 and 1957, for another 35 years, both the Giants and the Yankees were in the same vicinity. In total, the two clubs shared a rich and prosperous history together along the Harlem River waterfront for **55 years**, facing each other during this era six times in the World Series of Major League Baseball (in 1921 G, 1922 G, 1923 Y, 1936 Y, 1937 Y, and 1951 Y). This was the original NYC Subway World Series (between the National League and American League). The Yankees of the American League would eventually share this NYC Subway World Series contest with the Brooklyn Dodgers (seven times in 1941 Y, 1947 Y, 1949 Y, 1952 Y, 1953 Y, 1955 D, 1956 Y) and New York Mets (one time in 2000 Y) of the National League. However, the contest between the Giants and Yankees was a special one in New York history as the two clubs were from the same Harlem River waterfront area and had strong ties to one another. They were the two New York County teams of each league.

#### The New York Mets and New York Yankees

Years after the Giants moved to San Francisco, The New York Mets of the National League were formed and played at the Polo Grounds by 1962, until 1963. For **2 years** they played in the same area with the Yankees by the Harlem River waterfront. By 1964, the Mets moved to the new Shea Stadium at Flushing Meadows-Corona Park in Queens. From 1974 to 1975, for **2 years**, the Mets shared their venue with the Yankees while Yankee Stadium was being renovated.

#### **National Football League (NFL)**

The New York Giants (of the National Football League) and New York Jets (of the American Football League) played near each other or in the same venue for 37 years.

From 1925 to 1955, for 31 years, the New York Giants of the NFL played at the Polo Grounds. From 1956 to 1973, for 15 years they played at Yankee Stadium. Meanwhile, in 1959 the New York Titans of the AFL were formed, and played at the Polo Grounds from 1960 to 1963, officially being renamed the New York Jets by the final year. For **4 years** both the Giants and Jets played in the same area of the Harlem River waterfront much like the Giants and Yankees, or Mets and Yankees.

When Shea Stadium was built, both the Mets and Jets moved to their new venue. In 1975, the New York Giants (of football) had relocated back into New York (from Connecticut's Yale Bowl). Yet, Yankee Stadium was still being renovated at the time. Like the Yankees, the Giants too played at Shea Stadium. All four teams (the Mets, Yankees, Jets, and Giants) shared the same venue.

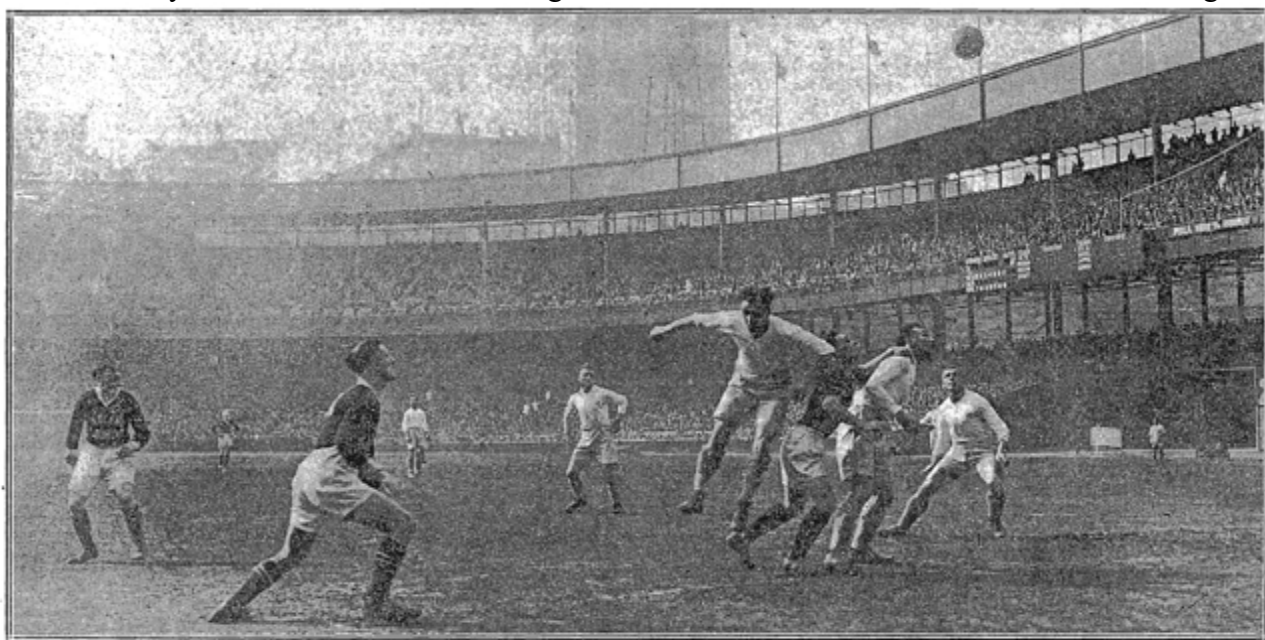
After Giants Stadium was built by 1976 at the Meadowlands in New Jersey, the Giants moved into their new facility. In 1984, the Jets moved into Giants Stadium - sharing it with the Giants until 2009, for 25 years. When MetLife Stadium was opened in 2010 across from Giants Stadium, both the Giants and Jets moved into their new home. Both teams have shared the same venue in New Jersey for **32 years**.

#### **Soccer (Amateur and Professional)**

This area (in uptown Manhattan and the West Bronx) along and surrounding the Harlem River waterfront, north of 110<sup>th</sup> st, stretching to Van Cortlandt Park and east to the Bronx River has a very rich soccer history, and sports history for that matter, dating back to the late 19<sup>th</sup> century. It is one of the major cradles of soccer, baseball, and football for all of the United States. Numerous fields have hosted historical soccer games there including Berkeley Oval; Columbia Oval; South Field; Ohio Field (Stadium); Fordham Field / Edwards Parade (Stadium); the Polo Grounds (I); Brotherhood Park / Polo Grounds (II) / Manhattan Field; the Polo Grounds (III); Hilltop Park; Van Cortlandt Park Fields; Bronx Park Fields; Jasper Oval; (Old) Bronx Oval; New Bronx Oval; Ontario Field; Harlem Oval / Olympic Field; Taft Oval / Lenox Oval; New York Oval / New York-Indiana Oval; New York Velodrome; Baker

Field / Columbia Stadium; Innisfail Park / Gaelic Park; Yankee Stadium (I); Dyckman Oval; Gaelic Field; Crotona Park Stadium / Crotona Oval; Van Cortlandt Park Stadium; Starlight Park Stadium; New York Coliseum / Bronx Coliseum; Sterling Oval; Hunts Point Stadium; George Washington HS Stadium; Monroe HS Stadium; DeWitt Clinton HS Field; Harris Park; Randall's Island Stadium / Triborough Stadium / Downing Stadium; Wien Stadium; Columbia Soccer Stadium / Rocco B. Commisso Soccer Stadium; Coffey Field Stadium; Yankee Stadium (II); and many more.

Already by the 1920s and 1930s, and well into the 1970s to the present, many league and international games hosted by the local clubs were boasting attendances in the 20,000 to 30,000 to 40,000 range:



*Captain Haeusler of the Hakoah Soccer Team Heading the Ball in Yesterday's Game Before 46,000 at the Polo Grounds.* Times Wide World Photo

(Americans (members of the New York Giants (II) and Indiana Flooring FC of the ASL) vs Hakoah (of Austria) (International friendly) - May 1<sup>st</sup>, 1926 - at the Polo Grounds (III) - **46,000** in attendance)

**40,000 SEE HAKOAH  
THE SOCCER GIANTS**

---

**All-Jewish Eleven and New York  
Club Deadlocked, 2-2, at  
Polo Grounds.**

---

**NATHAN STRAUS ATTENDS**

---

**Praises Sportsmanship of the  
Vienna Team in Short Address  
to Visiting Players.**

---

**HAKOAH LEADS AT HALF**

---

**Nicholsburger Tallies Twice in the  
Opening Period—McKenney and  
Haeusler Get Giant Goals.**

(New York Giants (II) (of the ASL) vs Hakoah (of Austria) (International friendly) - May 1<sup>st</sup>, 1927  
- at the Polo Grounds (III) - **40,000** in attendance)



Times Wide World Photo.

**NEW YORK NATIONALS ON ATTACK IN SOCCER GAME WITH GLASGOW RANGERS AT POLO GROUNDS.**

(New York Nationals (of the ASL) vs Glasgow Rangers (of Scotland) (International friendly) - May 25<sup>th</sup>, 1930  
- at the Polo Grounds (III) - **20,000+** in attendance)

SPORTS

THE NEW YORK TIMES, MONDAY, JUNE 15, 1931.

SPORTS

27

## *Hakoah and Glasgow Celtics Play 1-1 Tie Before 20,000 at the Polo Grounds*

### **GLASGOW CELTICS TIE WITH HAKOAH**

**20,000 See Soccer Rivals Play  
1-1 Draw—Nicholsburger and  
Napier Score Goals.**

#### **FOUR PLAYERS BANISHED**

Game Sponsored by Zionist Organi-  
zation Started by Mayor at  
Polo Grounds.

In the presence of Mayor Walker, who was accompanied by Hoesch President Levy of Manhattan, Police Commissioner Mulrooney and Captain O'Connor, his bodyguard, the Glasgow Celtics played the eighth game of their North American tour against the Hakoah All-Stars of the American Soccer League at the Polo Grounds yesterday.

A crowd of more than 20,000 attended, including for the most part Scottish, Irish and Jewish fans whose loyal partisanship at times rose to a high pitch. The result was a 1-1 tie, with Hakoah holding a 1-0 lead at half time.

The Mayor's Cup, which for the lack of a victor was not presented in accordance with schedule and went back to the City Hall, may possibly be available for the final game the Celtics will play, after their return from the West, against the New York Yankees at the Yankee Stadium on June 28.

The match, which was sponsored by the Zionist organization and arranged with the main object of

**CELTICS AND HAKOAH SOCCER PLAYERS IN ACTION YESTERDAY, AND THE MAYOR STARTING THE GAME.**



Times Wide World Photo.

**Stranberg of Hakoah and McGeigle, Celtics, Striving for Ball in Second Half.**



Times Wide World Photo.

**Mayor Walker Kicks the Ball Into Play.**

(Hakoah All-Stars (of the ASL) vs Glasgow Celtics (of Scotland) (International friendly) - June 14<sup>th</sup>, 1931  
- at the Polo Grounds (III) - **20,000+** in attendance)



Times Wide World Photo.

### LEAPING FOR THE BALL IN CHARITY SOCCER GAME IN YANKEE STADIUM

Kurt Platcheck (No. 6) of the Maccabees has jumped high in an attempt to head the ball, but missed. However, his team-mate, Josef Lieberman (on right), also off the ground, has succeeded in making the play. The ball can be seen on Lieberman's shoulder.

(New York State Football Association All-Stars vs Maccabees (of Palestine) (International friendly)  
- September 27<sup>th</sup>, 1936 - at Yankee Stadium - 30,000+ in attendance)

### CHARLTON ELEVEN PLAYS 1-TO-1 TIE

Great English Soccer Team is  
Held Even by U. S. All-Star  
Array at Polo Grounds

### CHESNEY EXCELS AT GOAL

He is Chiefly Responsible for  
Checking Invaders as They  
Open American Tour

By LOUIS EFFRAT

Heralded as the "wonder team" of the English Soccer League, the Charlton Athletic F. C. of London launched its American tour before 20,000 persons at the Polo Grounds yesterday, and, though the invaders impressed the onlookers considerably, they had to be content with a 1-1 tie with an all-star aggregation composed of American Soccer League players.

The coordination of the Charltons was superb and their adroit passing a revelation, but the All-Stars managed to pull even, and, thanks to the spectacular goal tending of Stanley Chesney, the selected stars



(American Soccer League All-Stars vs Charlton Athletic FC (of England) (International friendly)  
- May 30<sup>th</sup>, 1937 - at the Polo Grounds (III) - 20,000+ in attendance)

## GOAL BY NEMCHIK TIES SCOTS AT 1-1

Young American Soccer Star  
Deadlocks Contest Before  
25,072 at Polo Grounds

VISITORS TALLY EARLY

Garrett Heads Ball Into Net  
After 27 Minutes of Play  
in International Game

By ARTHUR J. DALEY

An angle kick to the corner of the net ten minutes from the end of the game gave the American Soccer League All-Stars a highly satisfactory and totally unexpected 1-1 tie with an All-Scotland eleven in an international soccer match before 25,072 spectators at the Polo Grounds yesterday.

Two youngsters who had played on the Olympic team of 1936 combined to produce the tally. George Conn flicked a pass to George Nemchik, who rifled a shot past the diving Scot goalie, John Dawson. Oddly enough, this was the only real threat that the Americans made in the entire period as the gimble-footed lads from across the Atlantic dominated the play.

Scotland gave Stanley Chesney, the giant United States goalie, a terrific workout in this session. It kept bombarding him for the entire 45 minutes, but not one shot escaped him. The Scotsmen had made their score in the more evenly



**A PLAY NEAR THE AMERICAN GOAL IN SOCCER MATCH**

McKenzie of Scotland (left) has leaped high to head ball in second period at Polo Grounds

Times Wide World

(American Soccer League All-Stars vs All-Scotland (International friendly) - May 21<sup>st</sup>, 1939  
- at the Polo Grounds (III) - 25,072 in attendance)



(American Soccer League All-Stars vs Liverpool (of England) (International friendly) - May 12<sup>th</sup>, 1946  
- at Randall's Island Stadium aka Triborough Stadium - 20,000+ in attendance)

## PALESTINE SQUAD TRIUMPHS BY 2-0

Hapoel Makes an Impressive  
American Debut Despite  
the Rain-Soaked Field

FRIED AND MEITNER SCORE

Clinch Victory in 28 Minutes  
of First Half—Chodorov a  
Superb Goal-Tender

By MICHAEL STRAUSS

The Hapoel soccer team of Palestine, starting its good-will tour of the United States, made an impressive debut yesterday, defeating a selected professional eleven, 2-0, before 43,177 persons at the Yankee Stadium.

Inclement weather, a rain-soaked field and a heavy ball served somewhat to mar the performance. But, as far as the visitors were concerned, it was a highly successful

## BATTLING FOR THE BALL IN SOCCER MATCH AT STADIUM



(New York All-Stars vs Hapoel (of Palestine) (International friendly) - May 4<sup>th</sup>, 1947  
- at Yankee Stadium - 43,177 in attendance (due to rain) - 61,000 tickets sold)

## VISITORS WIN, 2-1, AS 42,455 WATCH

Kaufman and Stelmach Tally  
Against All-Stars in Salute  
to Israel Contest

By GORDON S. WHITE Jr.

The Israeli Olympic soccer team defeated the American League All-Stars yesterday in the climax of the Salute to Israel program at Yankee Stadium.

A crowd of 42,455 saw the visiting eleven tally twice before the All-Stars could score. Then the Israelis held on for a 2-1 victory.

The soccer match was the final event of the long program. Though not the only sports event, it was the only seriously contested one. Between speeches and the soccer game, the Harlem Globetrotters turned part of the infield into a tankard for a twenty-minute basketball circus.

The Yankees wouldn't have recognized the area between second base and third while Meadow Lemon and Leon Hilliard frolicked about, shooting baskets now and then and performing sundry stunts in a 25-13 victory over the Washington Generals.

### Goal in 7 Minutes

The first goal in the soccer match came at the 7-minute mark. On their first move deep into All-Star territory, the younger and faster Israelis registered with an assist from a goal post.

Boaz Kaufman, the Israeli center forward, charged while dribbling and passed the All-Star goalie, Orlando Jorge, with a hard boot. Jorge lunged and fell to the ground as the ball



(American Soccer League All-Stars vs Israeli Olympic Team (International friendly) - April 30<sup>th</sup>, 1956  
- at Yankee Stadium (I) - 42,455 in attendance)

## Bangu Conquers Kilmarnock, 2-0, in Soccer

**Brazilians Win Title  
Before 25,440—  
Santos Excels**

By GORDON S. WHITE Jr.

Bangu of Brazil, Latin America's only entry in the International Soccer League, gained the league championship yesterday at the Polo Grounds. In one of the best-played games of the season, Bangu scored a 2-0 decision over Kilmarnock of Scotland before 25,440 fans for the title.

The game was a fast, well-fought contest. The enthusiastic reception it got by the largest International Soccer League crowd of the year brightened the future of this league, which began operations this season.

### A Matter of Prestige

Competition next year is virtually certain. The fans left with the realization that they had seen what was probably the best match played in the United States in many a year.

Bangu and Kilmarnock, the winners of the two divisions in the league, met with something big at stake—the prestige of the league title and the American Challenge Cup.



Kilmarnock players carry Decio Esteves da Silva, captain of the victorious Bangu team

(Kilmarnock FC (of Scotland) vs Bangu AC (of Brazil) (International Soccer League Championship) - August 6<sup>th</sup>, 1960 - at the Polo Grounds (III) - 25,440 in attendance)

## 43,702 Watch Santos Turn Back Napoli, 4-2, in Soccer at Yankee Stadium

### TONINHO'S 3 GOALS SPARK BRAZILIANS

**Pele, Guarded Closely by the  
Italians, Acts as Decoy—  
2 Hurt by Firecrackers**

By MICHAEL STRAUSS

There were fireworks at Yankee Stadium last night even before Santos of Brazil, led by the great Pelé, started play against Napoli of Italy.

Cherry bombs thrown by spectators provided a fitting prelude for the electrifying soccer game that followed as the South Americans defeated the Europeans, 4-2.

But Pelé — Brazilian players are only identified by nicknames at home — failed to dominate the game. Instead, he played the role of decoy spectacularly as his teammate, Toninho had a scoring spree.

**Pelé Pleases the Fans**

The brilliant Brazilian center forward posted three goals



(Santos (of Brazil) vs Napoli (of Italy) (International friendly) - June 21<sup>st</sup>, 1968 - at Yankee Stadium (I) - 43,702 in attendance)



(New York Cosmos vs Dallas Tornado (NASL friendly - Pele's first game with the Cosmos) - June 15<sup>th</sup>, 1975  
- at Downing Stadium - **21,278** in attendance)



(New York Cosmos vs Toronto Metros-Croatia (NASL game) - June 18<sup>th</sup>, 1975  
- at Downing Stadium - **22,500+** in attendance)



(New York Cosmos vs Chicago Sting (NASL game) - May 2<sup>nd</sup>, 1976  
- at Yankee Stadium (I) - **28,536** in attendance)



(England (national team) vs Italy (national team) (Bicentennial Cup game) - May 28<sup>th</sup>, 1976  
- at Yankee Stadium (I) - **40,650** in attendance)



(New York Cosmos vs Tampa Bay Rowdies (NASL game) - July 14<sup>th</sup>, 1976  
- at Yankee Stadium (I) - **27,892** in attendance)



(New York Cosmos vs Washington Diplomats (NASL game) - July 18<sup>th</sup>, 1976  
- at Yankee Stadium (I) - **27,398** in attendance)



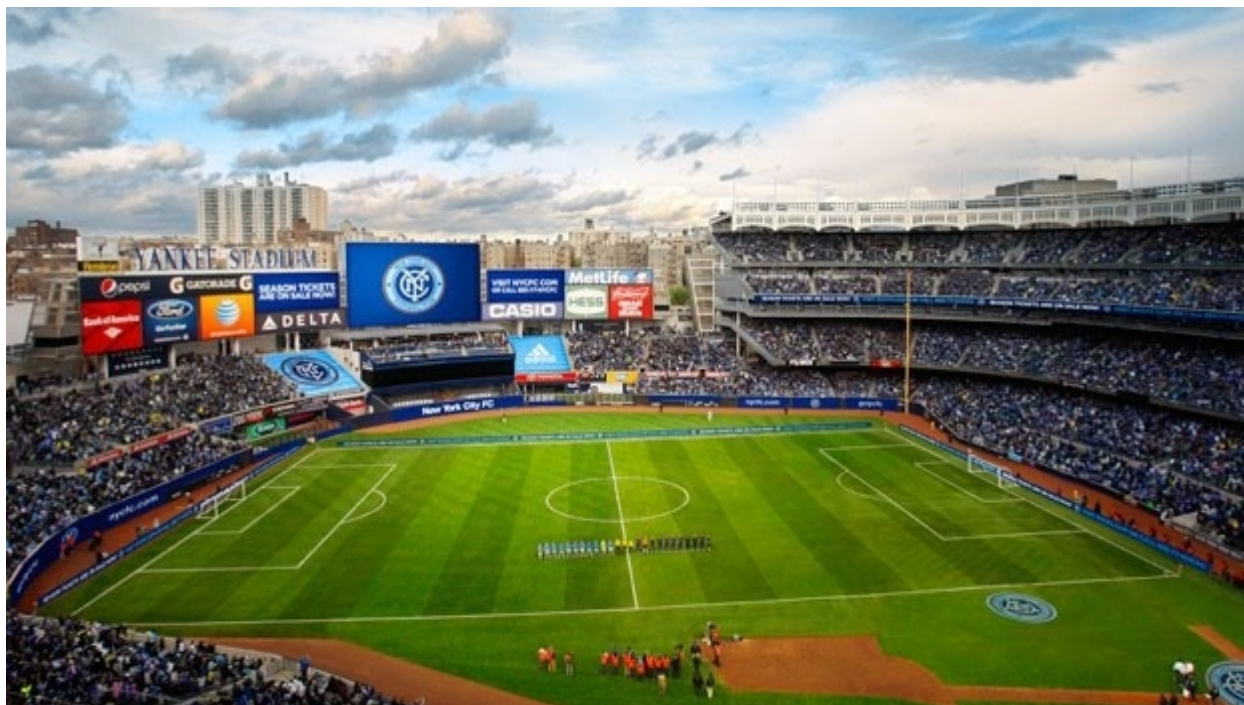
(Chelsea (of England) vs Paris Saint-Germain (of France) (World Football Challenge game) - July 21<sup>st</sup>, 2012  
- at Yankee Stadium (II) - **38,202** in attendance)



(Real Madrid (of Spain) vs Milan (of Italy) (World Football Challenge game) - August 8<sup>th</sup>, 2012  
- at Yankee Stadium (II) - **49,474** in attendance)



(Manchester City (of England) vs Liverpool (of England) (Guinness International Champions Cup game)  
- July 30<sup>th</sup>, 2014 - at Yankee Stadium (II) - **49,653** in attendance)



(New York City FC vs New York Red Bulls (MLS game) - June 28<sup>th</sup>, 2015

- at Yankee Stadium (II) - **48,047** in attendance)

(NYCFC average attendance at Yankee Stadium between 2015 and 2016 = 28,105)

For over 100 years, this area around the Harlem River has been a hotbed for soccer and it has a proven track record for attendance.

The area has been host to historical New York clubs; New York leagues; American leagues; American-Canadian leagues; city, metropolitan, state, regional, national, and international tournaments and championships; and international friendlies since the late 19<sup>th</sup> century, including the:

- 1) American Football Association Cup (AFA Cup aka American Cup) (1884-1924);**
- 2) American League of Professional Football Clubs (ALPFC) (1894);**
- 3) National Association Football League (NAFL) aka National Soccer League (NSL) (1895-1921);**
- 4) American Amateur Football Association Cup (AAFA Cup) (1912-1913);**
- 5) USFA National Challenge Cup / USSF United States Open Cup (USOC) (1914-present);**
- 6) American Soccer League (ASL) / Atlantic Coast Soccer League (ACSL) / American Soccer League (ASL) / ASL Metropolitan Division / American Soccer League (ASL) (1921-1983);**
- 7) National Amateur Cup (1923-present);**
- 8) German-American Soccer League / Cosmopolitan Soccer League (CSL) (1923-present);**
- 9) American Soccer League Cup (ASL Cup aka American Cup aka Lewis Cup) (1925-1963);**
- 10) Eastern Soccer League (ESL) (1928);**
- 11) American Soccer Association Cup (ASA Cup aka American Cup) (1929);**
- 12) National Soccer League (NSL) (II) (1932); National Soccer League (NSL) (III) (1938-1972);**
- 13) Eastern Professional Soccer Conference (EPSC) (1964-1965); and the**
- 14) CONCACAF Champions Cup / Champions League (CCL) (1962-present); among many others.**

Professional Clubs (from the 1880s-1960s)

- New York Football Club (NYFC) (I)
- New York aka New York Giants (I)
- Bronx United FC
- New York IRT
- New York Football Club (NYFC) (II) aka New York Soccer Club (NYSC) (I)
- Paterson FC (I) / New York Giants (II) / New York Football Club (III) aka New York Soccer Club (II)
- Indiana Flooring FC / New York Nationals / New York Giants (III) / New York Nationals
- New York Yankees
- New York Hakoah / Hakoah All-Stars
- New York Americans
- New York Field Club
- Brookhattan
- New York Soccer Club (III)
- New York State Football Association All-Stars aka New York All-Stars aka NY All-Stars
- American Soccer League All-Stars aka ASL All-Stars
- German-American Soccer League All-Stars aka GASL All-Stars; among others.

(\*Many of the above teams played near each other or in the same facility at different points in time.

\*The Giants (II and III) were also regarded by writers as the “New York Soccer Giants” in order to differentiate from the baseball team and eventually the football team of the same name.)

**15) International Soccer League (ISL) (1959-1965)**

- New York Soccer Club (IV)
- New Yorkers

**16) North American Soccer League (NASL) (Golden Generation) (1966-1985)**

**(United Soccer Association (USA), and the National Professional Soccer League (NPSL))**

- New York Skyliners
- New York Generals
- New York Cosmos

**17) American Bicentennial Soccer Cup** aka the **Bicentennial Cup** (1976)

**18) American Professional Soccer League (APSL) / A-League / USL First Division** (1985-2009)

- New York Centaurs

**19) World Football Challenge** (2009-2012)

**20) Guinness International Champions Cup** (2013-present)

**21) Major League Soccer (MLS)** (1993-present)

**22) North American Soccer League (NASL)** (Modern Generation) (2009-present)

**23) United Soccer League (USL)** (2010-present), and the

**24) National Premier Soccer League (NPSL)** (2003-present)

Current professional New York clubs that either host or have recently played in the area

- New York City FC (NYCFC)

- New York Cosmos and New York Cosmos B

- New York Red Bulls and New York Red Bulls II

The Cosmos' club played in this area in:

- 1971 at Yankee Stadium for the NASL season;

- 1974 and 1975 at Downing Stadium for the NASL seasons;

- 1976 at Yankee Stadium for the NASL season;

- 2011, 2012, and 2016 at Columbia Soccer Stadium / Rocco B Commisso Soccer Stadium for a few U-23, U-18, and B team games; and

- 2016 at Coffey Field for a USOC game.

List of present or former New York sports clubs, currently operating, that have played in New York County or Bronx County and called them home:

## **MLB**

- New York(s) aka New York Nationals aka New York Giants / San Francisco Giants

- Brooklyn(s) / Brooklyn Bridegrooms / Brooklyn Dodgers / Los Angeles Dodgers (in 1890)

- Baltimore Orioles / New York Highlanders aka New York Americans / New York Yankees

- New York Mets

(\*The name Gothams was first used by one of the original amateur baseball teams of New York.

It was later affectionately used by columnists to describe the Giants and the Yankees.)

## **NFL**

- New York Giants (aka New York Football Giants)

- New York Titans / New York Jets

## **NHL**

- New York Rangers

## **NBA**

- New York Knicks

## **NASL and MLS**

- New York Cosmos

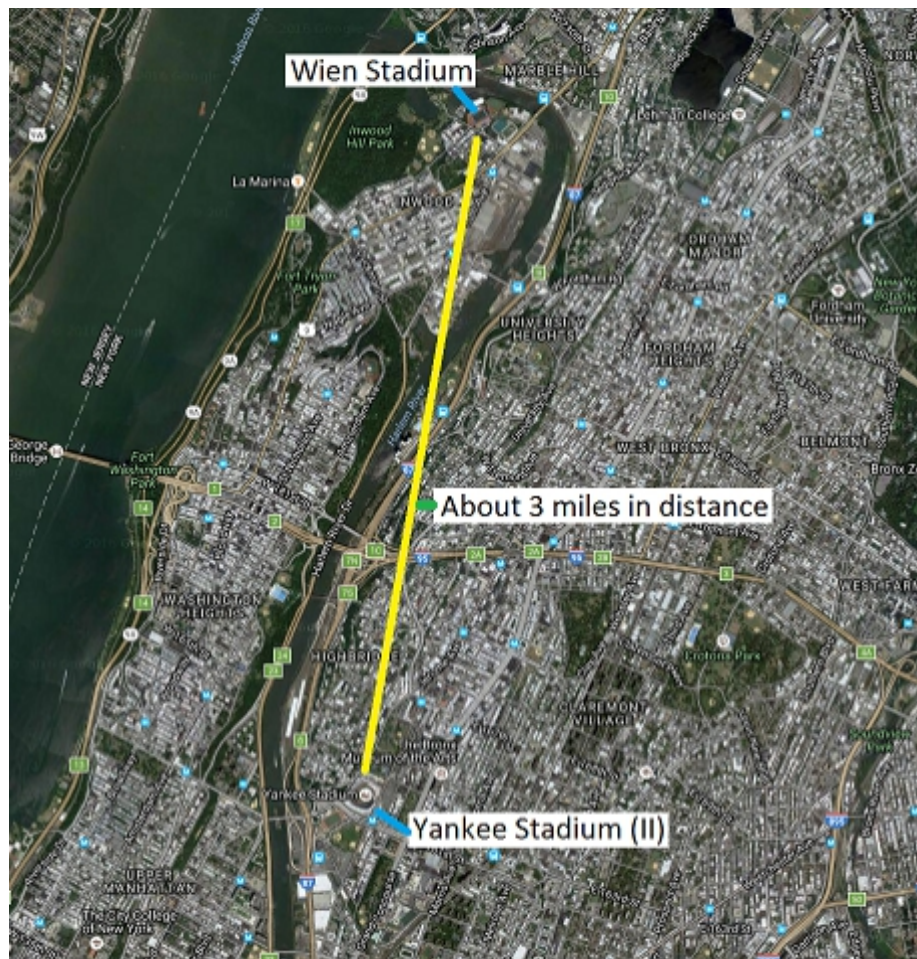
- New York City FC

The clubs listed above in MLB, the NFL, NHL and NBA are among the richest in all of professional sports around the country and the world. Their historical location within the 10 mile range of the center of Manhattan, near mass transit, has a lot to do with their storied success.

Ultimately, playing in the same area, especially in this vicinity, has worked successfully in the past for teams in the same leagues and for those in different sports. The same can be done so again with soccer.

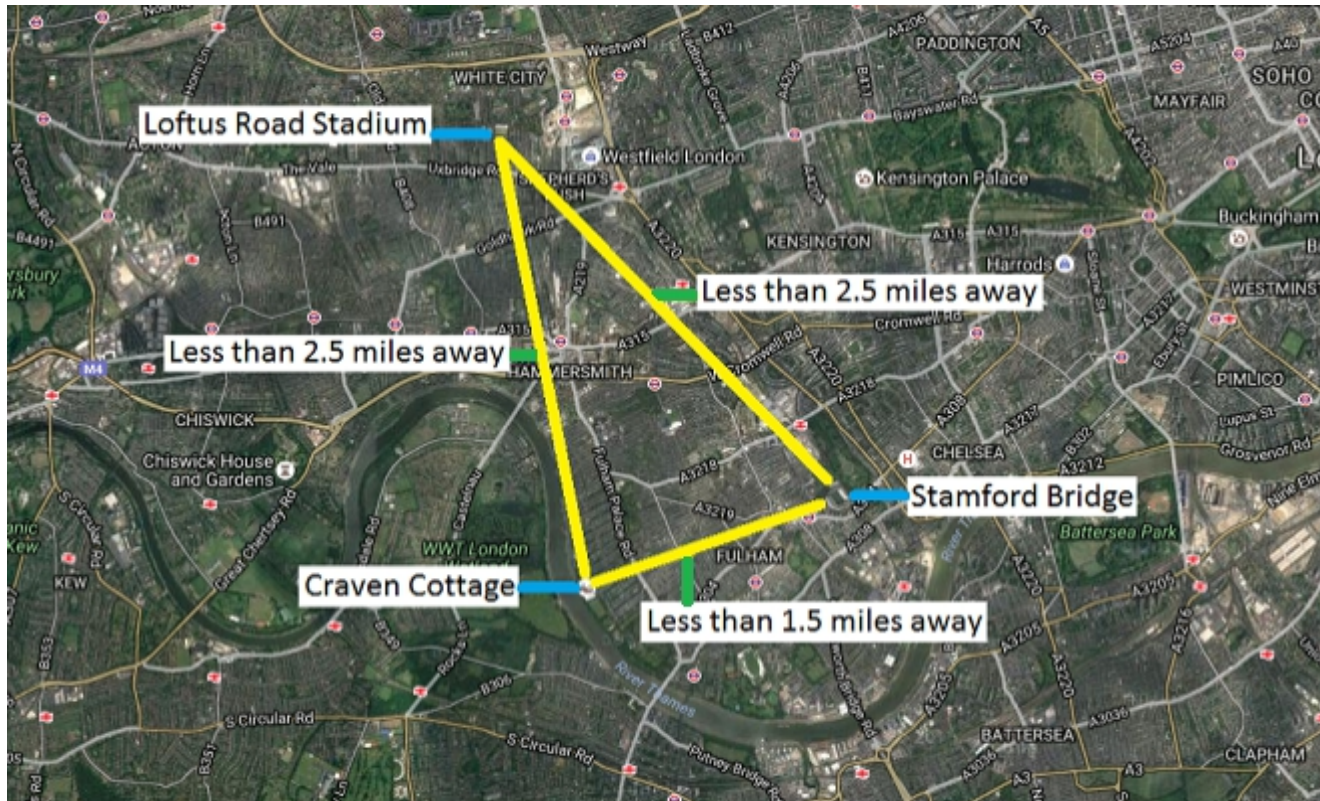
Though in the same region, both Manhattan (with 1.6 million residents) and Bronx (with 1.4 million people) are two different boroughs and counties with their own identities. Both the New York Cosmos of the NASL and New York City FC of MLS play in different leagues similar to how the National League (NL) and American League (AL) of MLB and in turn the NFL and AFL were before merging. There is sufficient room for both clubs (and leagues), with independent products, to coexist and draw more fans together in this sports-avid and populous area.

On top of this, Wien Stadium and Yankee Stadium (II) are about 3 miles away from one another, unlike the Polo Grounds (III) and Yankee Stadium (I) which were only 1/2 a mile away. There is even more distance between the two teams than there were between the Giants and Yankees, or Giants and Jets. Still, this setup can turn both the New York Cosmos and New York City FC into two of the most financially dominant soccer clubs in the country. This strategic positioning of these two clubs in the same area can help catapult the sport of soccer in the USA even further.



Over in London, England there are three popular professional clubs in the Premier League and The Football League Championship divisions whose stadiums are near each other in a similar way:

- 1) Queens Park Rangers FC - Loftus Road Stadium (capacity: 18,489)
- 2) Fulham FC - Craven Cottage (capacity: 25,700)
- 3) Chelsea FC - Stamford Bridge (capacity: 41,631)



So far in the 2016-2017 season (last updated November 20<sup>th</sup>), the three clubs are averaging as follows:

- 1) Queens Park Rangers - 15,100+ (in the Championship)
- 2) Fulham FC - 18,800+ (in the Championship)
- 3) Chelsea - 43,200 (in the Premier League)

They are all able to average this while playing in the same area at a short distance from each other. The New York Cosmos and New York City FC can do the same, if not more.

During the 2016-2017 season there are 13 clubs in London playing in the top four professional soccer leagues in England. The Premier League has the highest TV viewership for any soccer league around the world, and the second highest average attendance; while the Football League Championship has the highest TV viewership and average attendance for any second division league around the world.

### **Premier League (Division 1)**

- 1) Arsenal FC - Emirates Stadium (capacity: 60,388) - 60,000+ average
- 2) Chelsea FC - Stamford Bridge (capacity: 41,798) - 43,200 average
- 3) Crystal Palace - Selhurst Park (capacity: 26,309) - 24,800 average
- 4) Tottenham Hotspur - White Hart Lane (capacity: 36,230) - 31,500 average
- 5) West Ham United - Olympic Stadium (capacity: 60,010) - 57,000 average

### **Football League Championship (Division 2)**

- 6) Brentford - Griffin Park (capacity: 12,763) - 10,200+ average
- 7) Fulham FC - Craven Cottage (capacity: 25,700) - 18,800+ average
- 8) Queens Park Rangers - Loftus Road (capacity: 18,360) - 15,100+ average

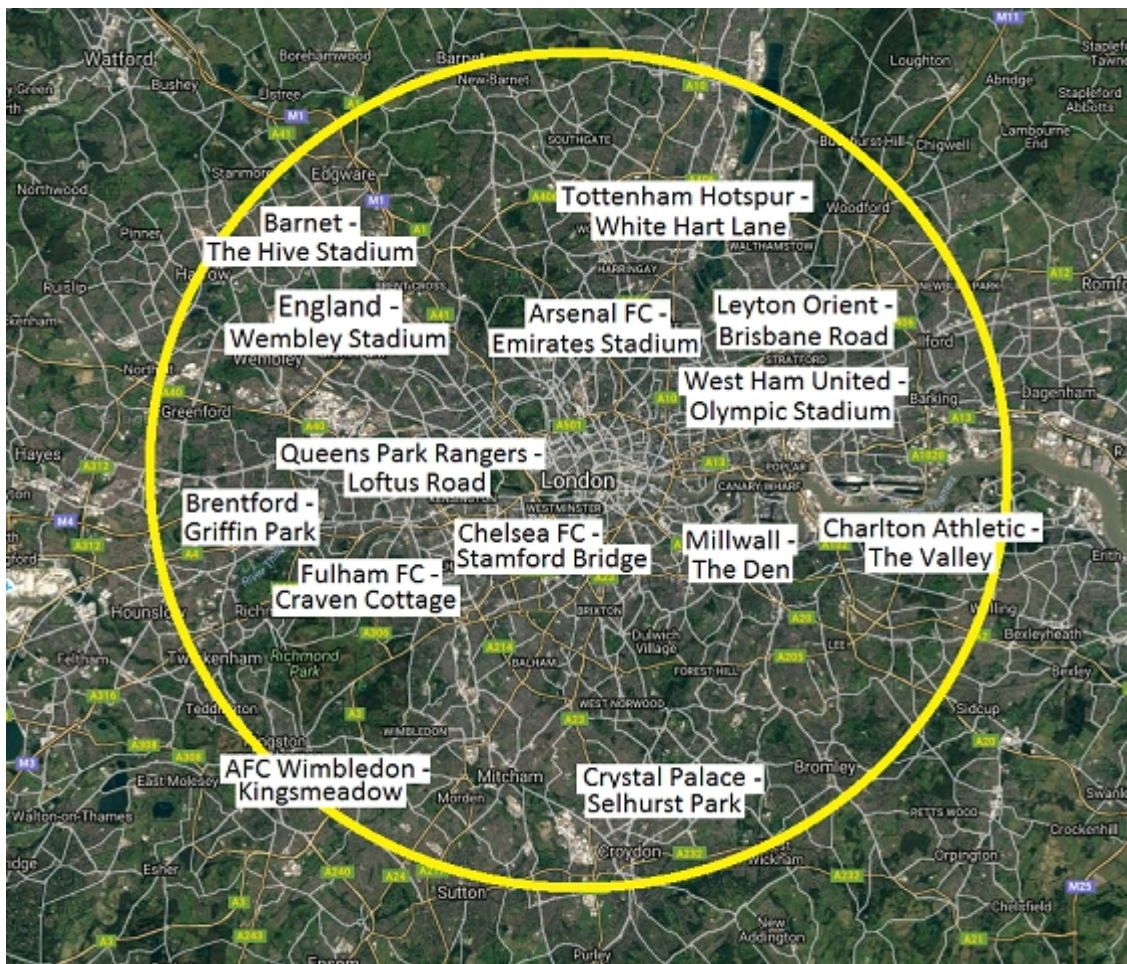
### **Football League One (Division 3)**

- 9) AFC Wimbledon - Kingsmeadow (capacity: 4,850) - 4,500 average
- 10) Charlton Athletic - The Valley (capacity: 27,111) - 10,800 average
- 11) Millwall - The Den (20,146) - 8,800 average

### **Football League Two (Division 4)**

- 12) Barnet - The Hive Stadium (capacity: 5,100) - 1,700+ average
- 13) Leyton Orient - Brisbane Road (capacity: 9,271) - 4,500+ average

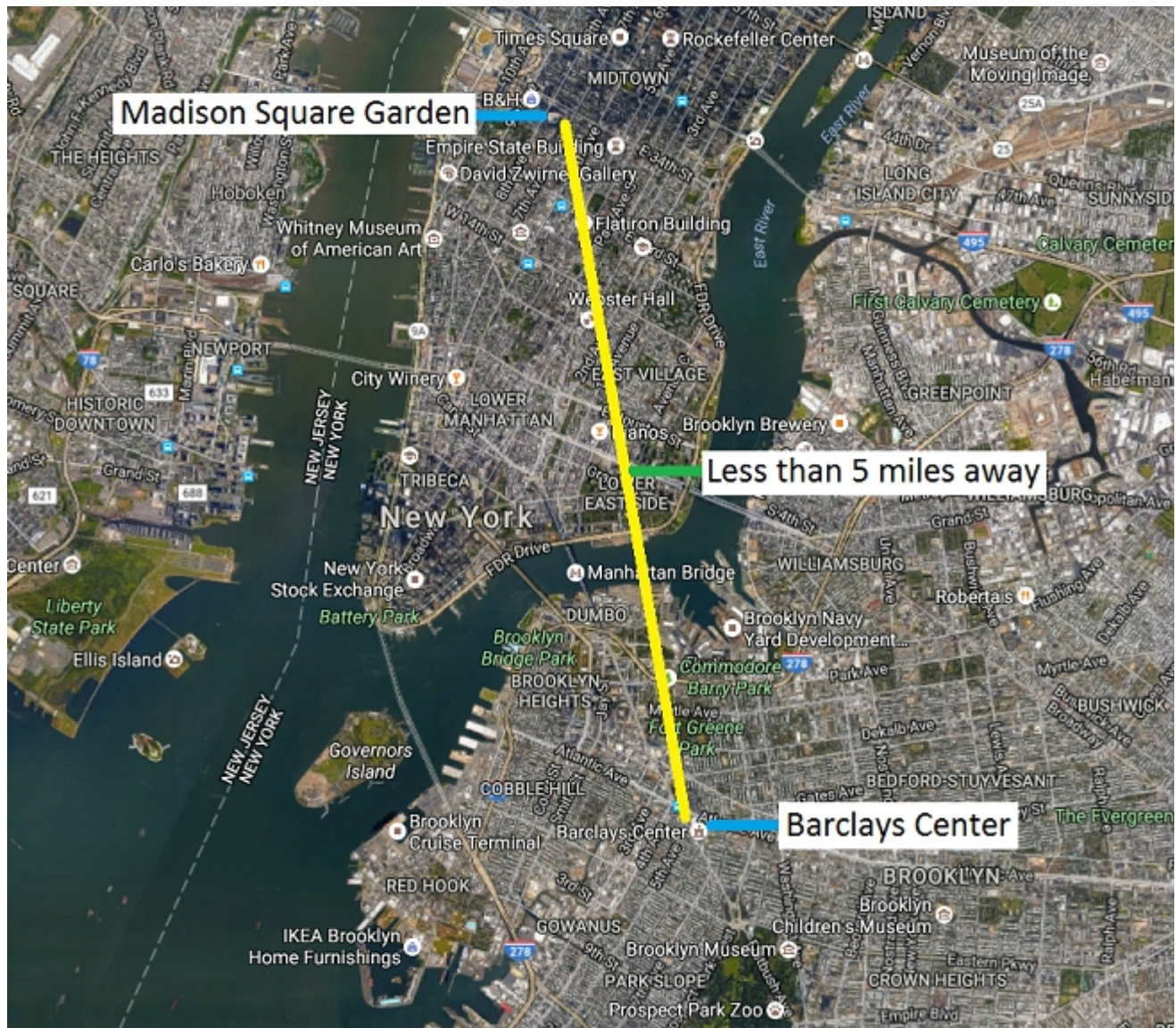
- 14) Meanwhile the England men's national team plays at Wembley Stadium (capacity: 90,000) - 80,000+ average



**\* And guess what: All of these top London clubs play within a 10 mile range of the center of London. This plays a significant role in their individual and leagues' local, national, and global success.**

Just like London, top New York City sports teams are in the 10 mile range of Manhattan's center. If the New York Cosmos want to be at the top once more then they need to embrace this thought. Moving to Wien Stadium is the best move for the club. Eventually a permanent stadium can be built in the area.

In both basketball and hockey, a similar scenario already exists in NYC:



Both Madison Square Garden and the Barclays Center each host an NBA and NHL team. The two arenas are in different boroughs, but are less than 5 miles away from each other. Meanwhile, each of their teams are averaging competitive figures in the 13,000-20,000 range.

Madison Square Garden (capacity: 18,200)

New York Knicks (NBA) - 19,800+ average in 2015-2016; 19,800+ average thus far in 2016-2017

New York Rangers (NHL) - 18,000+ average in 2015-2016; and 18,100 average thus far in 2016-2017

Barclays Center (capacity: 18,103)

Brooklyn Nets (NBA) - 15,100+ average in 2015-2016; 15,500+ average thus far in 2016-2017

New York Islanders (NHL) - 13,600+ average in 2015-2016; and 12,500 average thus far in 2016-2017

If these teams in the NBA and NHL can be successful while being close, then the New York Cosmos and NYCFC, just like the clubs in London, will definitely be in very high demand together.

The reality is, the New York Cosmos can't play another year past 2016 at Hofstra's Shuart Stadium, unless they want to continue diminishing the value of the club's brand and remain with a minor league image. Attendance is crucial, and it is undeniably affected by location.

Historically, since 1963, Hofstra Stadium / Shuart Stadium has been a failure for professional sports when it comes to average attendance. The total ceiling for this venue for all sports is about 5,500 max. There is no going up. Cosmos' league average at Hofstra since 1972 is approximately 4,900.

### **Soccer**

Four professional soccer clubs have failed when it comes to attendance at this venue:

- a) New York Apollo / New York United (1973-1980) - American Soccer League (ASL)
- b) New York Nationals (II) (1984) - United Soccer League (USL)
- c) Long Island Rough Riders (1994-2003) - Various leagues in the United Soccer Leagues (USLs)
- d) New York Cosmos (1972-1973; 2013-2016) - North American Soccer League (NASL)

### **Lacrosse**

The Lizards want to move from this site and get closer to the center of the city:

- a) New York Lizards (2001-2002; 2009-present) - Major League Lacrosse (MLL)  
(2003-2008 at the Mitchel Athletic Complex)

### **Football**

- a) Hofstra Pride football team (1937-2009) (played at the stadium from 1963 to 2009) - NCAA
- b) New York Sentinels (2009) - United Football League (UFL)

And after 73 years in existence, even Hofstra's football team could no longer sustain itself at their very own venue.

There is a reason why the Yankees, Mets, Giants, Jets, Rangers, and NYCFC don't establish themselves around this area, or outside of the 10 mile range. It's also why the Nets and Islanders eventually moved closer to the center of the city. Location is everything.

The Cosmos need to accept this history and simply stop any hopes of things improving at Shuart Stadium. Their time there is affecting their club and in turn the entire NASL. By 2017, the club needs to be playing within the city at Wien Stadium.

The club's total league average by the Harlem River (at Yankee and Downing Stadiums) since 1971 is 9,898 (double the amount of Hofstra). At Yankee Stadium only = 12,754. Last and highest average in the area = 18,235. These are the kind of growing numbers the club and fans can see at Wien.

Ultimately, this is what the Cosmos need to follow if they want to succeed:

### **Plan**

- New home for NASL games, friendlies, USOC games, and championships: Wien Stadium.
- Alternative venue for USOC games: Rocco B. Commisso Soccer Stadium, Coffey Field, Icahn Stadium, and MCU Park.
- Special venue for championships and major friendlies: CitiField and MetLife Stadium.
- Future permanent stadium: within the 10 mile range of Manhattan's center near mass transit and highways.
- New home for Cosmos B and Women's teams: Rocco B. Commisso Soccer Stadium.

CitiField - Capacity: 41,922. (Tarp / Drape for soccer to about 25,000)

While the Cosmos play at Wien Stadium, the club should utilize CitiField for playoffs, Soccer Bowl, New York derbies (vs NYCFC and NY Red Bulls), and major international friendlies. The club can have attendance well above 25,000 in this state-of-the-art facility.



Showing the demand and capacity of the Cosmos at this venue would build greater momentum for the club to gain their own 30,000 seat permanent stadium in NYC.

MetLife Stadium - Capacity: 82,566. (Tarp / Drape for soccer to about 30,000 to 40,000)

Ranked among the top stadiums in the US and around the world by numerous magazines, including Forbes, MetLife is the number one facility for major national and international football and soccer events held in the NY metro area. It was the site of Super Bowl XLVIII in 2014, and the 2016 Copa America Centenario Final. Without a doubt, this is where the big boys play.



It's predecessor, Giants Stadium, was home to the New York Cosmos from 1977 to 1985 where the Cosmos averaged over 35,000 in 9 years, and had numerous record attendance in the 60,000 and 70,000 range. The Meadowlands and the new stadium have been waiting for the return of the Cosmos.

Certainly, along with CitiField, MetLife Stadium should be the main site for championship games and major international friendlies held by the New York Cosmos. Similar to the Sounders at CenturyLink, the Cosmos can tarp / drape the stadium to about 30,000 or 40,000.



Located just 8 miles away from the center of Manhattan, with access to the NJT (commuter rail), multiple buses (including express and bus rapid transit), and various highways including Interstate 95 (I-95), MetLife Stadium is one of the most accessible and desirable sports venues in the NYC area.

This section is where the Cosmos became the grandiose club that people talk of and write about around the world. Major stars like Pelé, Chinaglia, Beckenbauer, and Alberto all played there, none of which ever graced the stage at Hofstra Stadium / Shuart Stadium. (Raúl and Senna deserved to play there.)

If the Cosmos want to truly become the big time club that they aspire to, and attract stars and fans from around the world, then this is the place to be. As the saying goes: There's no place like home.

The club can temporarily play at Wien Stadium for the next few years. They can utilize both CitiField and MetLife Stadium for big games. And when the time is right and opportunity presented, then the club can build a 30,000+ seat stadium in the city or even in the Meadowlands.

I have written a 300+ page proposal detailing all viable possible stadium sites in the NYC area, including by CitiField. When the club is ready to move forward, they can formally contact me.

This was the Cosmos at Giants Stadium in the 1970's and 80's:



This can be the Cosmos again one day (sooner than later):



Dare to dream? I say, dare to conquer!

Sincerely,  
Isaac Payano  
Economist, Urban Planner, and Educator