



M A R E K W E I D L I C H P O R T F O L I O



@everydaycarsketch
/marekweidlich
www.marekweidlich.com
weidlich.marek@gmail.com

STUDIO F-A-PORSCHE



Manyone
biomeqa™



Studio F. A. Porsche
Industrial design Intern
Zell am See, Austria
September 2016 - February 2017

Pininfarina Extra
Industrial design Intern
Cambiano, TO, Italy
March 2017 - June 2017

ŠKODA Auto
Exterior design Intern
Mlada Boleslav, Czech Republic
September 2017 - January 2018

ŠKODA Auto
Diploma thesis
Mlada Boleslav, Czech Republic
February 2018 - August 2018

ManyOne (SkibstedID / Biomega)
Transportation designer
Copenhagen, Denmark
February 2019 - February 2020

ŠKODA Auto
Exterior designer
Mlada Boleslav, Czech Republic
March 2020 - July 2020



BIOMEGA SIN

EXTERIOR

Biomega SIN SHOW CAR 2018

Oblong shapes, round lights, open-wheel typology. All this is Biomega. An iconic danish urban vehicle based on Scandinavian design principles. Designed in Denmark, engineered in Germany.

Biomega SIN EV concept is a concept of an urban electric car designed and produced by Biomega. Debuted at the Shanghai CIEE trade fair in 2018. The SIN electric car is designed with the city dweller in mind, as a connected, affordable and sustainable mode of urban transport.

Biomega is a premium urban bicycle brand, peerless within its category. Biomega designs and develops bicycles, electric bicycles and related accessories. Biomega bike design brings social innovation, design thinking and urban city lifestyle to the world of bicycles. The company was founded in 1998 by Jens Skibsted Martin in Copenhagen, Denmark.

Being a part of Biomega/SKibstedID/ Maynone team meant for me the great opportunity to gain a new experience in the

field of autonomous vehicle and battery technology. Thanks to the cooperation with EDAG development centre (Fulda, Germany) I was consulting my steps in design with engineers.



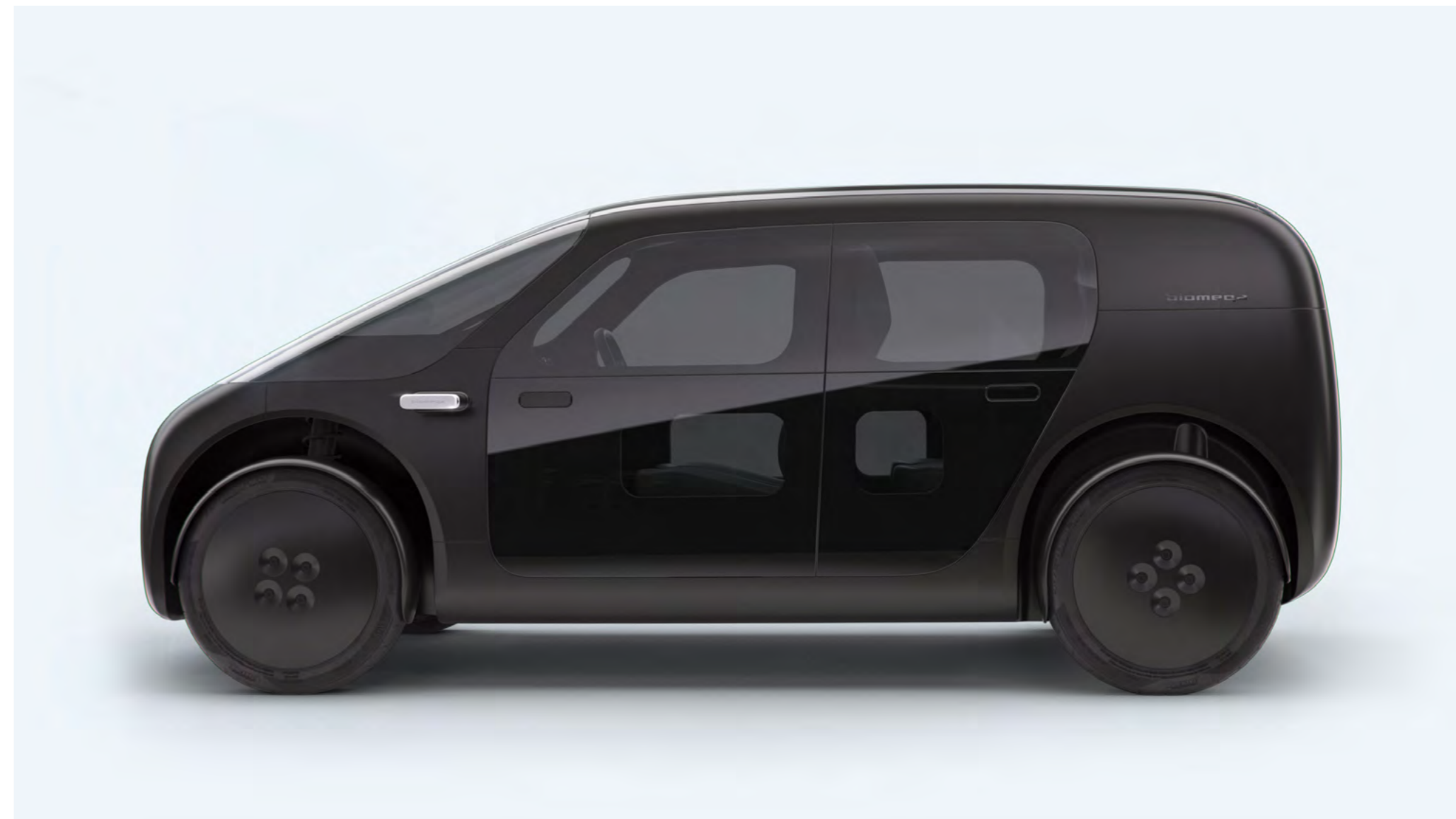
EV PHASE 2

EXTERIOR

Biomega EV PRODUCTION CAR - 20XX

Biomega EV was born by merging two exceptional things. Danish design and german engineering.

Biomega EV is successor of the previous concept, created in 2018. It is production version that meets all the European Union road traffic regulations. The car was designed in Copenhagen, Denmark, accompanied by EDAG engineers from Fulda, Germany.



LANCIA STRATOS ZERO CONCEPT

EXTERIOR

Redesign of an icon Personal project (2021)

This leisure personal project was created as a tribute to a designer Marcello Gandini.

This project is still in progress. Honestly it is not easy to redesign such a strong iconic car as the Lancia Stratos Zero Concept is. That is why I always return to this project in my spare time. This car is my heart's desire so I like to return to this project from time to time.

The Lancia Stratos Zero preceded the Lancia Stratos HF prototype by 12 months and was first shown to the public at the Turin Motor Show in 1970. The futuristic bodywork was designed by Marcello Gandini, head designer at Bertone, and featured a 1.6 L

Lancia Fulvia V4 engine. The Lancia Stratos HF Zero was exhibited in Bertone's museum for many years. In 2011 it was sold during an auction in Italy for €761,600.

This is the tribute to Marcello Gandini.
#makelanciagreatagain

To experience the whole story please visit: www.marekweidlich.com/projects



ŠKODA ENYAQ iV

EXTERIOR

Škoda Enyaq iV
September 2020

Official press sketch of the new Škoda Enyaq iV which was officially presented on September 2020.

ŠKODA's first fully electric SUV together with my first official press sketches! I'm very grateful for the opportunity to be at least with these sketches a little part of this wonderful project. For a young car designer such as myself it was and still is a great experience, motivation, and definitely dream come true!



PORSCHE DESIGN P'42

EXTERIOR + INTERIOR

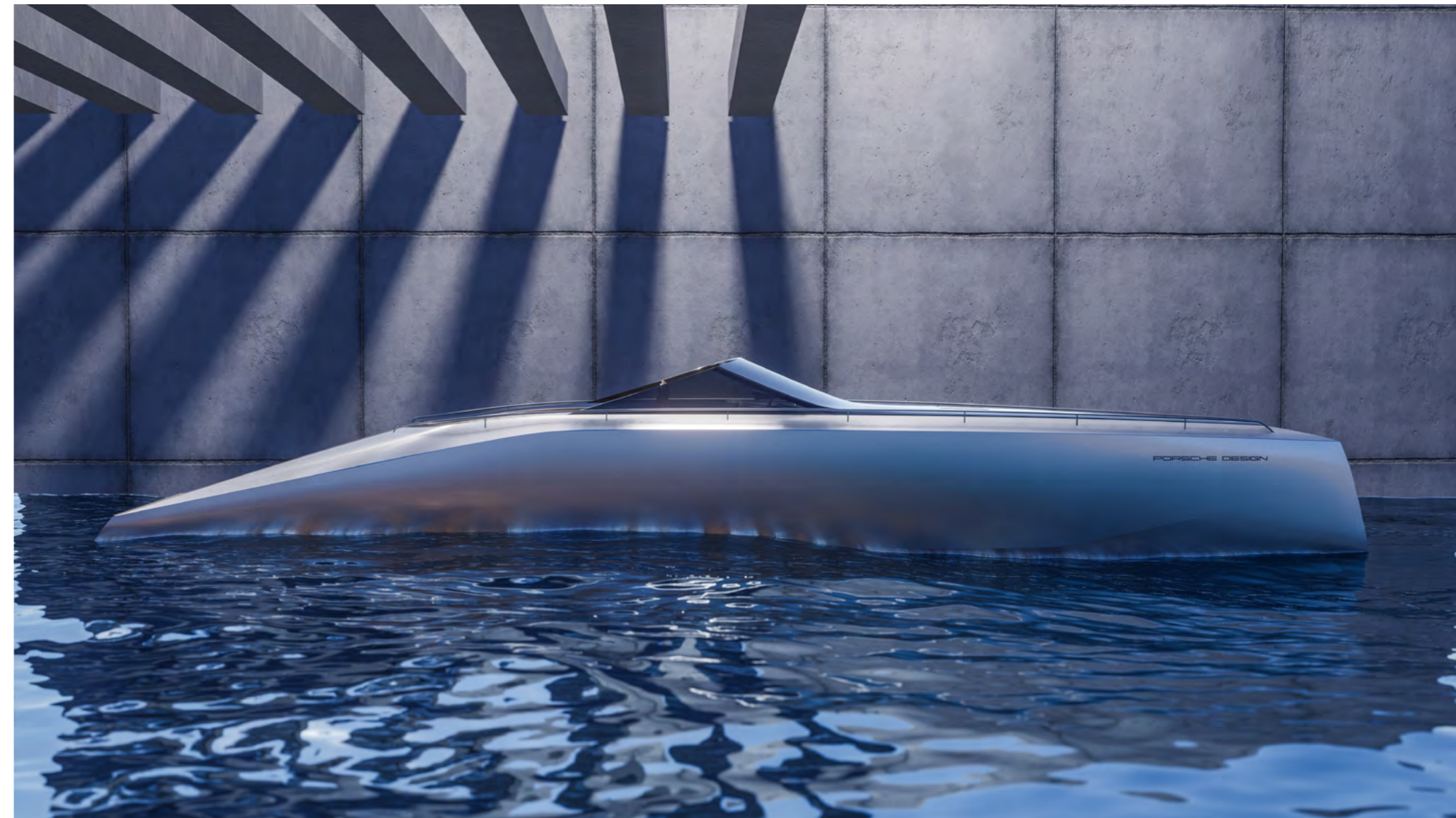
Porsche Design P'42 **Personal project (2020)**

Combining a traditional speedboat with a sleek seamless look together with high performance to create a unique water sports experience is the idea behind the design of the new Porsche Design P'42 boat.

The P'42 boat translates the simple and brutal form contrasts with the flowing organic water to make a strong statement. Such a silent and pure craft would offer a unique travel experience. The seamless body shape and the monochrome color palette is classic Porsche Design cues.

P'42 stands for the boat length overall. (LOA 42 ft / 12.80 m)

For more renderings and animations please visit www.marekweidlich.com.



DYNAMIQ GTT 115

DESIGNED BY STUDIO F. A. PORSCHE

INTERIOR

Dynamiq GTT 115 **Internship project (2017)**

In 2017 I was part of the design team which worked on the design of the Dynamiq GTT115 superyacht. My part on this task was to design interior parts. This was during my internship at Studio F. A. Porsche (Zell am See, Austria).

The first superyacht with Porsche DNA, the 35-metre GTT 115 blends comfortable high-speed cruising with transatlantic range. Only seven will be built, making this a truly exclusive collector's edition. GTT 115 features the carmaker's signature elements like Targa-style mullions or a transom style in line with the futuristic Mission E concept study.



PRINCESS R35

INTERIOR

DESIGNED BY PININFARINA EXTRA

Princess R35

Internship project (2018)

During my internship at Pininfarina Extra in 2017 I was part of an amazing design team who has worked on the design of Princess R35. My part in this project was to design the rear part of an interior - especially the seating area and the sun deck.

"The R35 embodies these three factors: an avant-garde yacht with an astonishing skin and a sprinter's heart." - Paolo Pininfarina

A brand new form of luxury transport experience in water: the first Princess R Class performance sports yacht that has made its debut at the Cannes Yachting Festival in September 2018. The R35 is the result of a prestigious collaboration between Princess Yachts, the British giant in luxury motor yacht manufacturing and Ben Ainslie Racing Technologies, the nautical experts behind Britain's bid to win the America's Cup, known as the Formula 1 of sailing and Pininfarina, the Italian luxury design house.



ŠKODA eCON

EXTERIOR

SPONSORED DIPLOMA THESIS

Škoda eCON

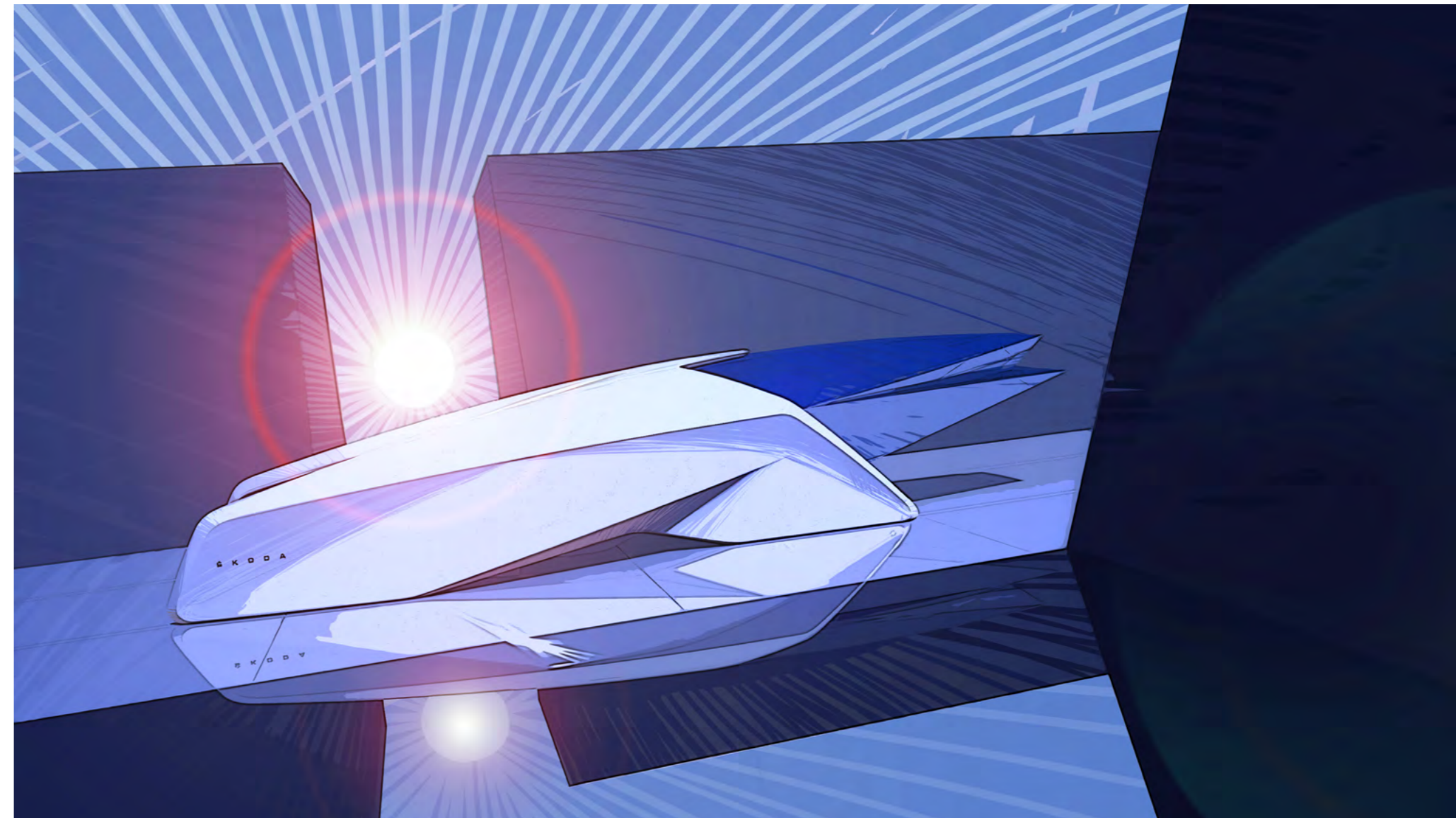
Sponsored diploma thesis by Škoda DESIGN (2018)

The Škoda eCon concept is a sculptural vision of an electric icon in the near future. Škoda eCon concept is the merger of minimalism, national symbols, Czech heritage and Škoda design. In my diploma thesis I was trying to find the eco-friendly future of autonomous cars and design it according to my vision of how autonomous cars could look in approximately 50 years. If we look at the current situation of transportation in large cities, we notice how congested the streets are with cars. This is due to the fact that we are used to own not one, but several cars, however their function is disappearing. We own Coupés for summer trips, SUVs for trips to the mountains, MPVs for transporting children to schools. We live in a time of a billion cars. The main target I focused on in my thesis was the way of transportation itself. The kind of transport we know of today is outdated and will have to change. Our mindset and attitude towards ownership needs to be updated. We have plenty of car companies in these days. All these car companies focus on quantity, not the quality. My diploma thesis is basically a manifest. The goal was to design an automotive sculpture that would raise questions and prompt the people think about the future of transportation. Is the mass production of cars sustainable for the future?

The first step in the process was to realise and accept the three basic rules from the masters of design and architecture. The rules are FORM FOLLOWS FUNCTION (Louis Sullivan), LESS IS MORE (Dieter Rams) and ORNAMENT IS A CRIME (Adolf Loos). I applied these principles to shape my finale design.

My diploma thesis is called The eCon2. The whole name of the project is "Electric Icon x2". It is composed of two parts. The Capsule and The Module. The Capsule would be bought as a car, as we know today. It would be offered in two variants. Small (from three to five seats) and large (from five to seven seats). The module, the so-called platform, would be leased depending on the nature of the road. This means if the family would like to ski in the mountains, they would rent a 4WD platform. If the family decides to take a trip into a low-end terrain, they would rent a platform adapted for motorway journeys (other chassis hardness and so on). If it would be a ride for enjoyment, they would lease a platform with a sporty character.

Because I worked on my diploma in cooperation with the largest Czech automotive company, I decided to maintain a great patriotism in my work. For this reason I worked with purely Czech materials and integrated national symbols into the design. Therefore, the capsule is made of Bohemian crystal, representing the core of the sculpture and the most important part of my work. The Module is made of Czech porcelain. The shape is continuously connected according to the timeless architecture of the Ještěd observation tower. The shape of the back part of the crystal is inspired by the blue wedge shape on the Czech flag.



TATRA 805X

EXTERIOR

Tatra 805X redesign Semester project (2018)

The Czech company Tatra is the third oldest company in the world which produces cars and has an unparalleled history. The company was founded in 1850 as Ignatz Schustala & Comp, later renamed to Nesselsdorfer Wagenbau-Fabriksgesellschaft, when it became a wagon and carriage manufacturer. In 1897, Tatra produced the first motor car in central Europe called the Präsident automobile. In 1919, it changed its name again to Koprivnická vozovka a.s., and in 1921 changed from the Nesselsdorfer marque to the Tatra badge, named after the nearby Tatra Mountains. The period from 1933 to 1952 were the glory days for Tatra. Its aerodynamic cars developed during this era stunned the whole world. Unfortunately after the war Tatra did not fare well and slowly closed its car production. Today the brand produces only trucks.

The Tatra T805 was an escort vehicle during the journeys around the world of the czech duo of adventurers Zikmund and Hanzelka. They were well known for their travels in Africa, Latin America, Asia and Oceania in the 1940s and 1950s.



ŠKODA PORTAL 2035

EXTERIOR

ŠKODA PORTAL 2035

Semester project (2018)

Skoda Portal 2035 is a sculptural vision of public transportation in year 2035. It is also a manifest for an eco-friendly way of transportation that represents a vision of how the public transport units could possibly look like in a close future.

"Minimum shapes leads to timelessness."

- Ferdinand Porsche

Because I believe that emotional design is temporary - my approach was to design the public transport vehicle in a very minimalistic way and with no emotions. Public transport vehicle is an object which is seen on the city road every day - so people get used to it very quickly and get bored of it after some time. Emotions in design always react to the style in the exact period of time. And just as time changes, style changes with it. The only way how to make a timeless object

unique is to design with no feelings and no emotions. Because only then simple design can last forever and become timeless.

The concept makes use of lines as graphical elements to display a function. The edge-corner lights are blinkers and the door frame is a warning light. When the door is open and the unit is at the bus-stop, the frame light becomes green and when the doors are closed and the bus is ready to go, the frame light becomes red. Both doors are covered by metal using semi-transparent technology where all the information is shown about upcoming bus-stops, arrival time etc. On the top of the unit is device using nano-particles which absorbs pollution (dust and dirt) during the ride and filters it. If these buses (with this anti-pollution mechanism) would replace all current existing buses on earth, the estimated probability to purify polluted air is 25% within ten years. In combination with other measures this might be a way to slowly improve the air quality on our planet.

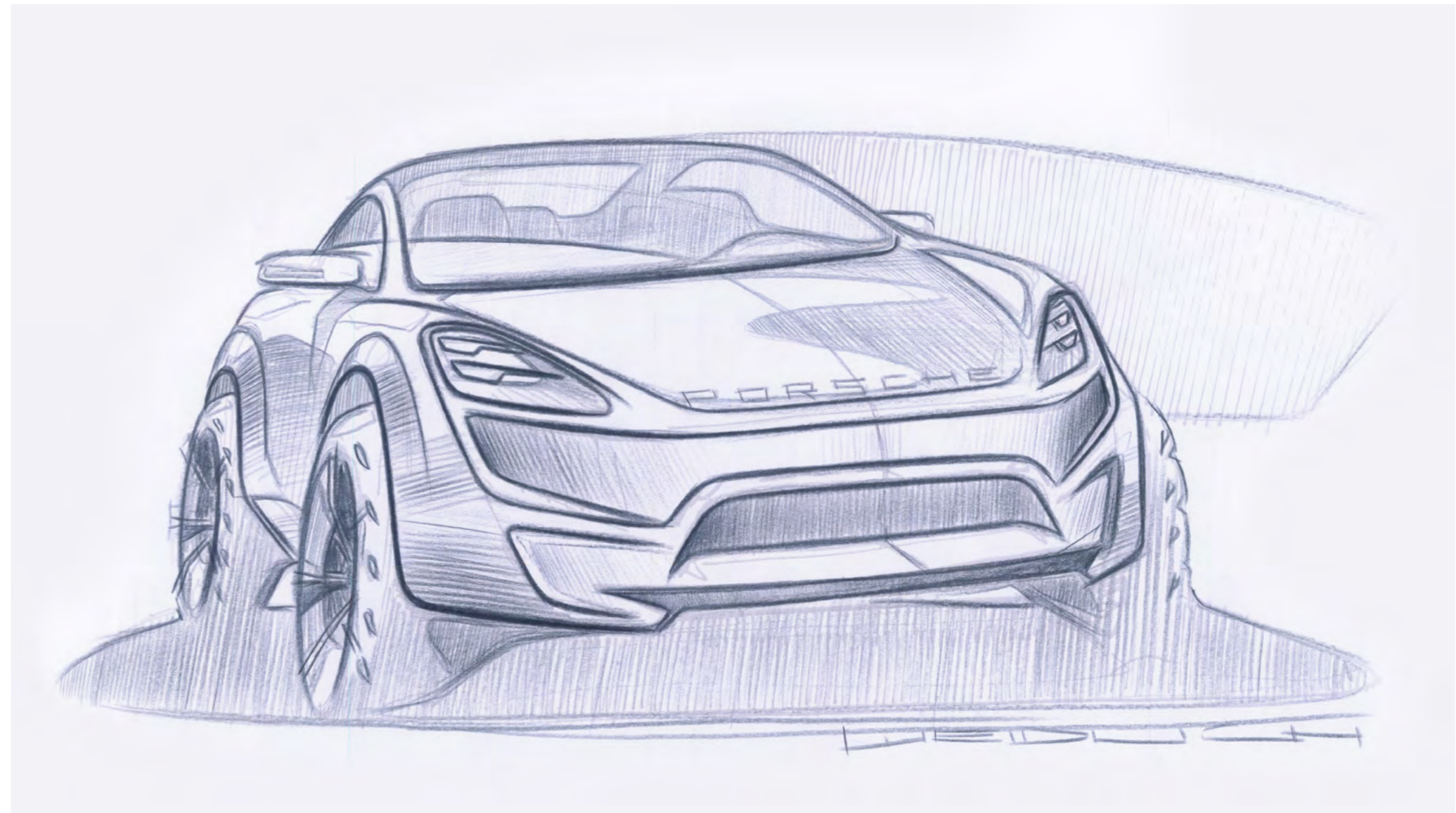


SKETCHBOOK

EXTERIOR

2015-202X

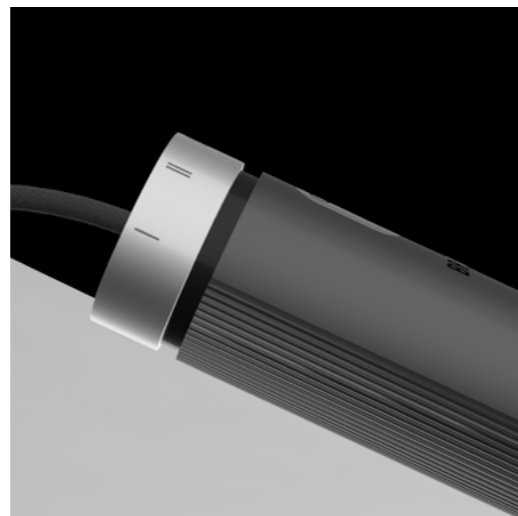
more sketches on www.marekweidlich.com



BRAUN HAND MIXER

PRODUCT DESIGN

Braun Hand Blender
Free-time project (2020)





MAREK WEIDLICH

WEIDLICH.MAREK@GMAIL.COM
00420 602 768 868
WWW.MAREKWEIDLICH.COM

