
SD Card detection issue

1 message

Mon, May 4, 2020 at 10:20 PM

good morning.

hope this email finds you well

I've been using mooshimeter for couple of years now without a problem. till i found the battery completely depleted all over the place. i removed all parts, and cleaned off battery wastes, however, i could not manage to have the logging featuring working again. after quick inspection, it was found that the SD card slot got so rusted too. so i had to replace it too. so i used micro to sd card adapter as a host, solder jumper wires from pcb to sd card host. but still not working. i searched around the web and found that could be some wires need to be shorted in order to detect it. can you please advice me on this matter.

notes,

i tried the micro sd card on the pc still working.

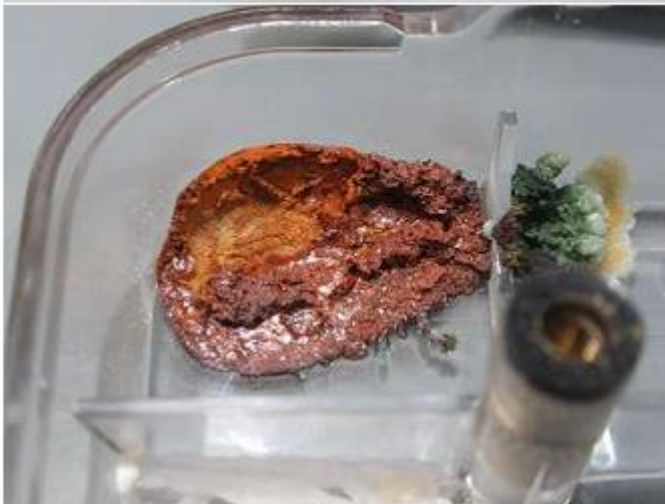
re-format to FAT32, still no luck

looking forward to hearing from you

this is the actual unit bought in 2016

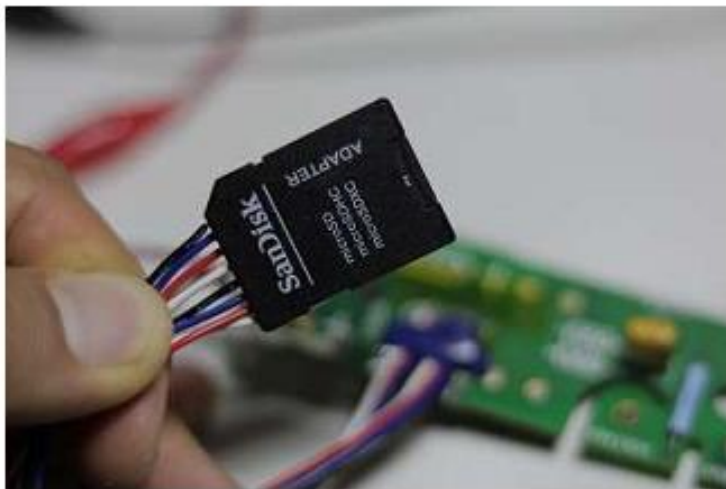


some pictures of battery depleted





I soldered wires straight to SD adaptor



I removed the old SD slot



as per below

