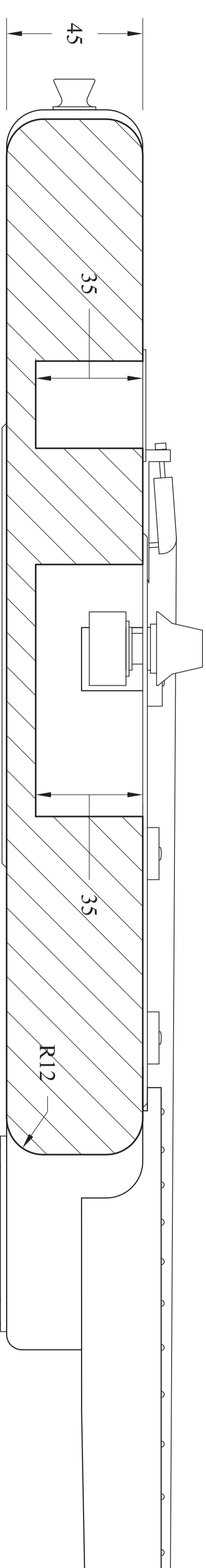
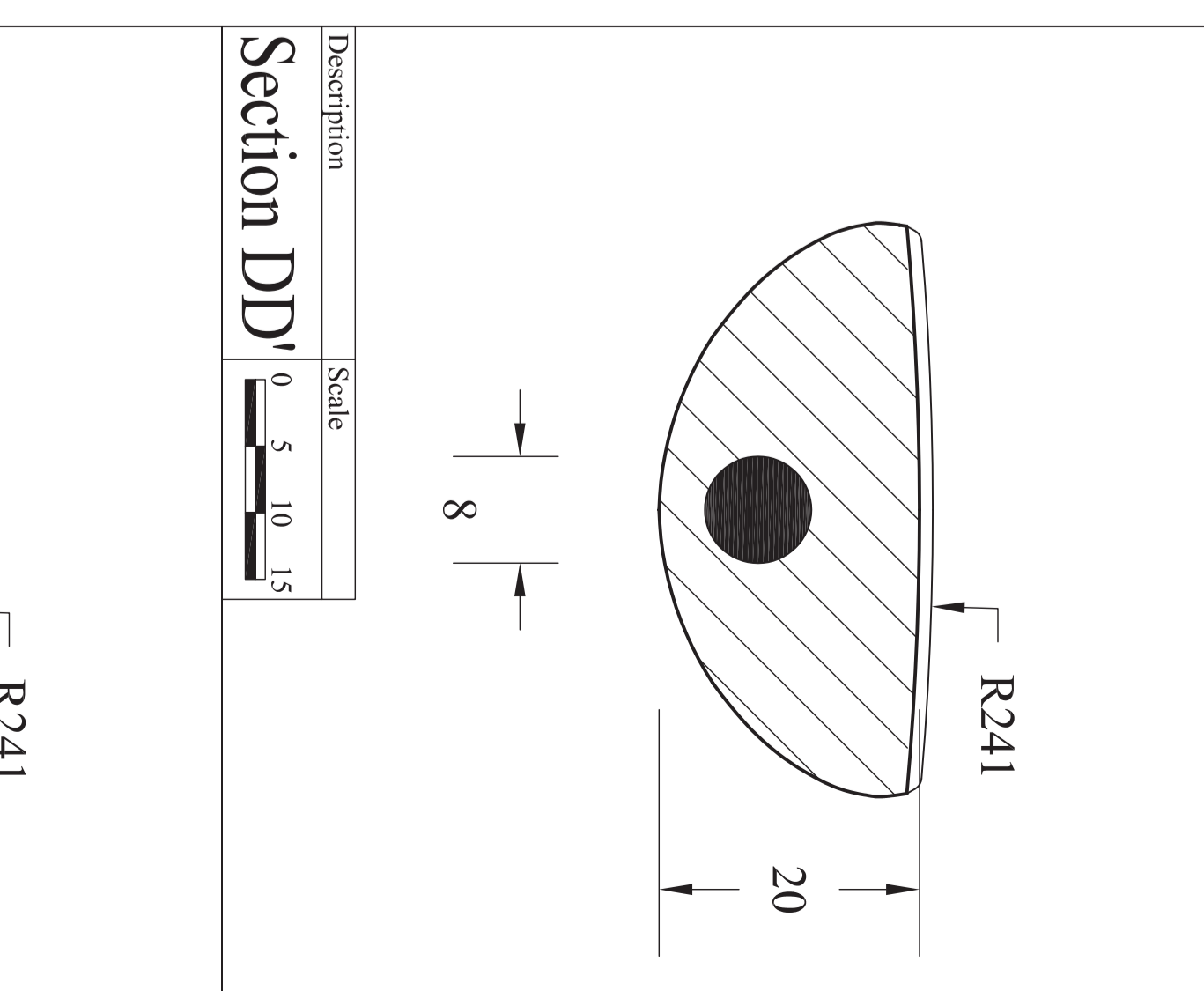
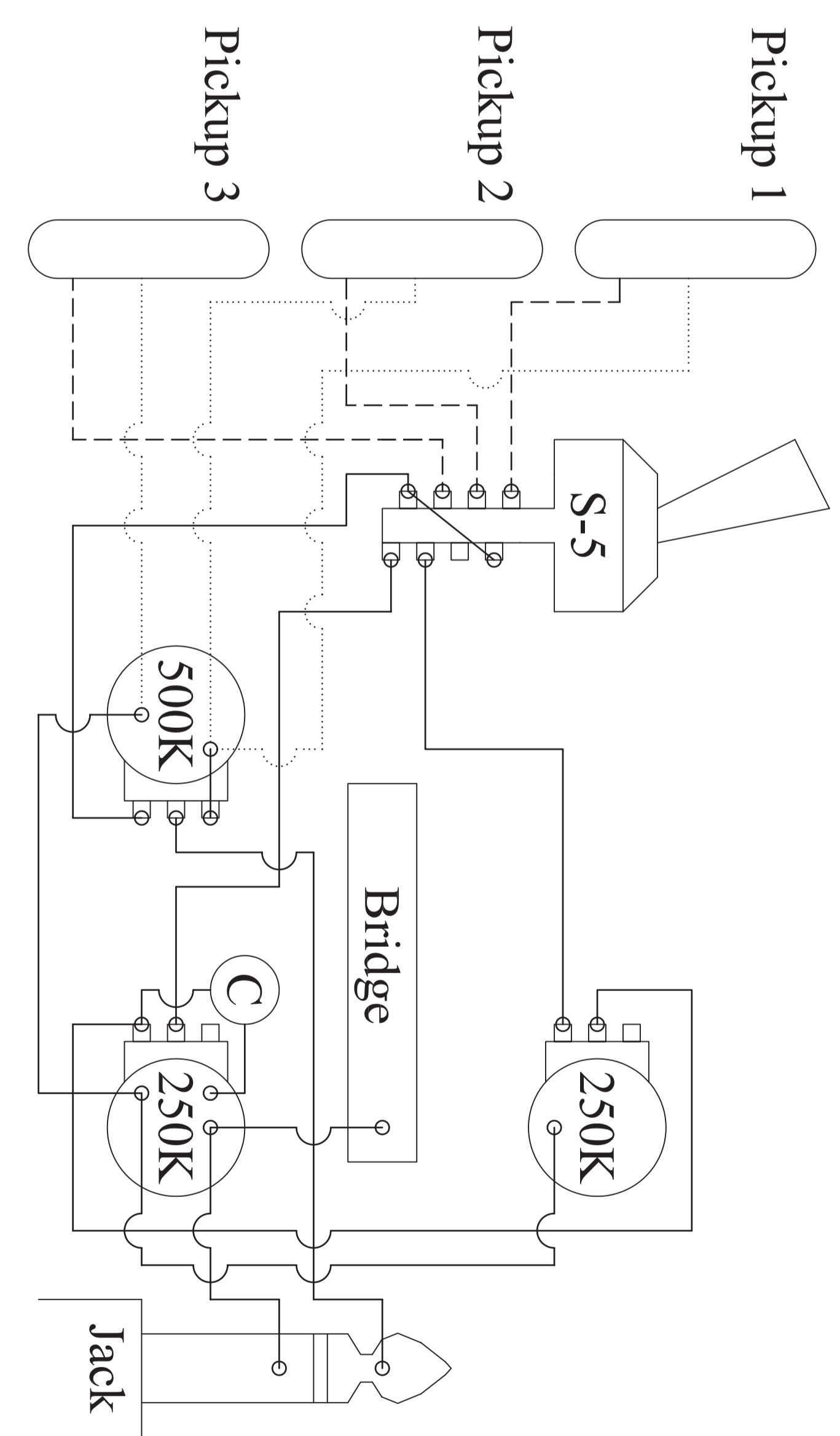
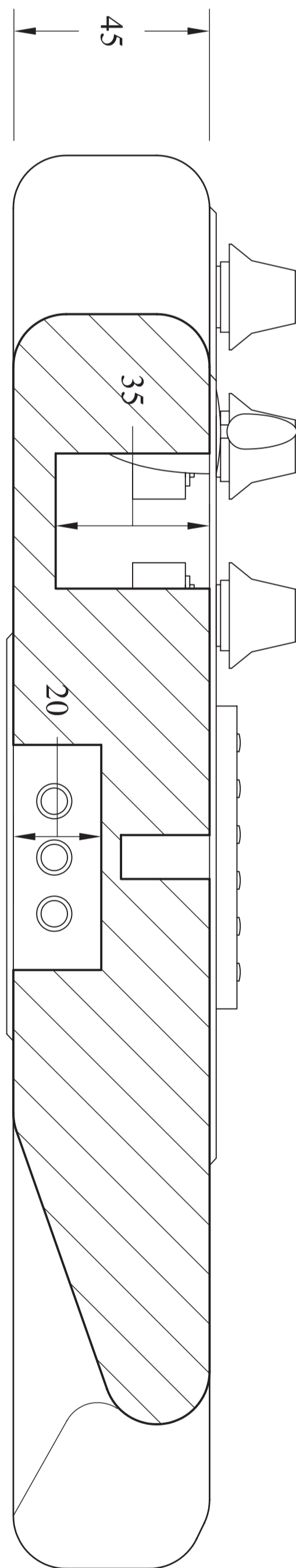


Description	Scale
Back plan view	0 30 40 60
Jack	Mono Jack

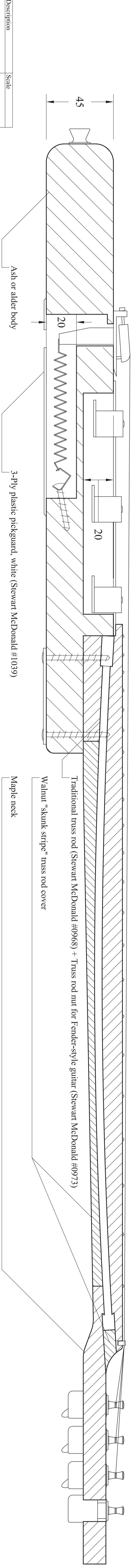
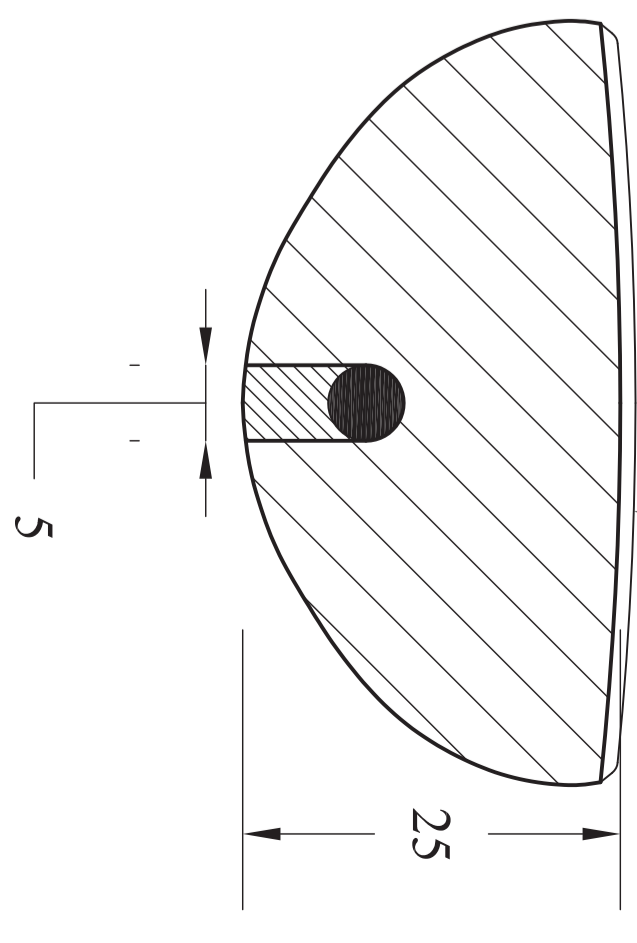
Description	Scale
Section BB	0 10 20 30
Section CC	0 10 20 30



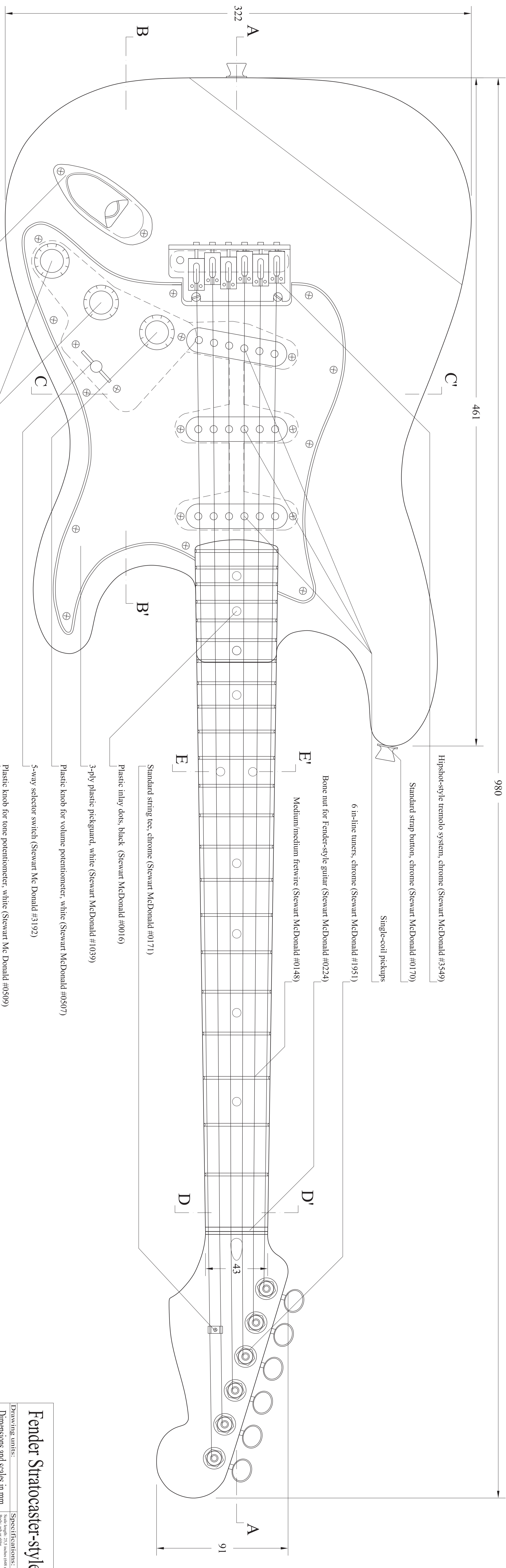
Description	Scale
Section BB	0 10 20 30
Section CC	0 10 20 30



Description	Scale
Section EE	0 5 10 15



Description	Scale
Section AA	0 10 20 30



- Hipshot-style tremolo system, chrome (Stewart McDonald #3549)
- Standard strap button, chrome (Stewart McDonald #0170)
- Single-coil pickups
- 6 in-line tuners, chrome (Stewart McDonald #1951)
- Bone nut for Fender-style guitar (Stewart McDonald #0224)
- Medium/medium fretwire (Stewart McDonald #0148)
- Hipshot-style tremolo system, chrome (Stewart McDonald #3549)
- Standard string tee, chrome (Stewart McDonald #0171)
- Plastic inlay dots, black (Stewart McDonald #0016)
- 3-ply plastic pickguard, white (Stewart McDonald #1039)
- Plastic knob for volume potentiometer, white (Stewart McDonald #0507)
- 5-way selector switch (Stewart Mc Donald #3192)
- Plastic knob for tone potentiometer, white (Stewart Mc Donald #0509)
- Star-style jack plate, chrome (Stewart McDonald #0134)

Description	Scale
Front plan view	0 10 20 30

Fender Stratocaster-style guitar

Drawing units:
 Dimensions and scales in mm

Drawn by:
Benjamin Stouff

Date:
 05/01/2005

Specifications:
 Body: ash or alder
 Neck: maple
 24 frets
 25.4mm (1 inch) scale
 12:12 fretboard
 10:50mm (4.126 inch) nut width
 1.5mm (0.059 inch) string spacing
 1.5mm (0.059 inch) string spacing
 1.5mm (0.059 inch) string spacing
 1.5mm (0.059 inch) string spacing
 1.5mm (0.059 inch) string spacing