

Free Knitting Pattern from Lion Brand Yarn

Lion Brand® Wool-Ease®

Tree of Life Afghan

Pattern Number: 70122AD

SKILL LEVEL: Experienced (Level 5)

SIZE: One Size

About 48 x 58 in. (122 x 147.5 cm)

CORRECTIONS: (applied May 21, 2012)

AFGHAN

Cast on 180 sts.

...

Continue in established pattern following row-by-row instructions or consecutive rows of Chart for 58 rows, ending with a RS row.

P 1 row.

Work **Rows 1-14 of** Dividing pattern as established.

Work **Rows 1-48 of** Flower Garden pattern as established

Work **Rows 1-14 of** Dividing pattern as established.

K 1 row.

Work **Rows 1-58 of** Twin Trees pattern as established (or follow Twin Trees Chart).

P 1 row.

Work **Rows 1-14 of** Dividing pattern as established.

Work **Rows 1-48 of** Flower Garden pattern as established.

Work **Rows 1-14 of** Dividing pattern as established.

K 1 row.

Work **Rows 1-58 of** Twin Trees pattern as established (or follow Twin Trees Chart).

Bind off all sts.

**Wool-Ease® (Article #620).*

MATERIALS

- 620-099 Lion Brand Wool-Ease Yarn:
Fisherman
10 Balls
- Lion Brand Knitting Needles- Size 8 [5 mm]
- Lion Brand Cable Needles (Set of 2)
- Lion Brand Large-Eye Blunt Needles (Set of 6)

- *Solid, Heather, Twist: 80% acrylic, 20% wool*
- *Sprinkles, Wheat, Mushroom, Rainbow Mist: 86% acrylic, 10% wool, 4% rayon*
- *Glitter/Multi-colors: 78% acrylic, 19% wool, 3% polyester*
- *Frosts: 70% acrylic, 20% wool, 10% polyamide*
- *Prints: 80% acrylic, 20% wool*

; package size: **Solid, Heather, Twist:** 3 oz/85g; 197 yd/180m balls

Sprinkles, Wheat, Mushroom, Rainbow Mist: 3 oz/85g; 197 yd/180m balls

Glitter/Multi-colors: 2.5 oz./70g; 162 yd/146m balls

Frosts: 2.5 oz./70g; 162 yd/146m balls



Prints: 2.5 oz/70g; 162 yd/146m balls

GAUGE:

18 sts + 28 rows = 4 in. (10 cm).

When you match the gauge in a pattern, your project will be the size specified in the pattern and the materials specified in the pattern will be sufficient. The needle or hook size called for in the pattern is based on what the designer used, but it is not unusual for gauge to vary from person to person. If it takes you fewer stitches and rows to make your swatch, try using a smaller size hook or needles; if more stitches and rows, try a larger size hook or needles.

Making a Gauge Swatch

STITCH EXPLANATION:

2/2 PLC (2 over 2 purl left cross) Slip 2 sts to cable needle and hold in front, p2, then k2 from cable needle.

2/2 PRC (2 over 2 purl right cross) Slip 2 sts to cable needle and hold in back, k2, then p2 from cable needle.

2/1 PLC (2 over 1 purl left cross) Slip 2 sts to cable needle and hold in front, p1, then k2 from cable needle.

2/1 PRC (2 over 1 purl right cross) Slip 1 st to cable needle and hold in back, k2, then p1 from cable needle.

1/1 PLC (1 over 1 purl left cross) Slip 1 st to cable needle and hold in front, p1, then k1 from cable needle.

1/1 PRC (1 over 1 purl right cross) Slip 1 st to cable needle and hold in back, k1, then p1 from cable needle.

2/2 LC (2 over 2 left cross) Slip 2 sts to cable needle and hold in front, k2, then k2 from cable needle.

2/2 RC (2 over 2 right cross) Slip 2 sts to cable needle and hold in back, k2, then k2 from cable needle.

M1 (make 1) An increase worked by lifting horizontal thread lying between needles and placing it onto left needle. Knit this new stitch through the back loop.

ssk (slip, slip, knit) Slip next 2 sts as if to knit, one at a time, to right needle; insert left needle into fronts of these 2 sts and knit them tog.

PATTERN STITCHES

Twin Trees

Row 1 (WS): K12, p4, k8, p4, k12 -- 40 sts.

Rows 2-15: K the k sts and p the p sts as they appear.

Row 16: P12, M1, k4, p8, k4, M1, p12 -- 42 sts.

Row 17 and all remaining WS rows: K the k sts and p the p sts as they appear.

Row 18: P12, k1, M1, k4, p8, k4, M1, k1, p12 -- 44 sts.

Row 20: P10, 2/2 PRC, k4, M1, p8, M1, k4, 2/2, PLC, p10 -- 46 sts.

Row 22: P8, 2/2 PRC, p2, k4, M1, k1, p8, k1, M1, k4, p2, 2/2 PLC, p8 -- 48 sts.

Row 24: P6, 2/2 PRC, p4, k4, 2/2 PLC, p4, 2/2 PRC, k4, p4, 2/2 PLC, p6.

Row 26: P5, 2/1 PRC, p5, 2/1 PRC, k2, p2, 2/2 PLC, 2/2 PRC, p2, k2, 2/1 PLC, p5, 2/1 PLC, p5.

Row 28: P5, k2, p5, 2/1 PRC, p1, 2/1 PLC, p3, 2/2 RC, p3, 2/1 PRC, p1, 2/1 PLC, p5, k2, p5.

Row 30: P4, 1/1 PRC, 1/1 PLC, p3, 2/1 PRC, p3, 2/1 PLC, 2/2 PRC, 2/2 PLC, 2/1 PRC, p3, 2/1 PLC, p3, 1/1 PRC, 1/1 PLC, p4.

Row 32: P3, 1/1 PRC, p2, k1b, p3, k2, p5, 2/2 LC, p4, 2/2 LC, p5, k2, p3, k1b, p2, 1/1 PLC, p3.

Row 34: (P2, 1/1 PRC) 3 times, 1/1 PLC, p3, 2/1 PRC, 2/1 PLC, p2, 2/1 PRC, 2/1 PLC, p3, 1/1 PRC, (1/1 PLC, p2) 3 times.

Row 36: P5, (1/1 PRC, p2) twice, k1b, p3, k2, p2, 2/1 PLC, 2/1 PRC, p2, k2, p3, k1b, (p2, 1/1 PLC) twice, p5.

Row 38: P4, (1/1 PRC, p2) 3 times, 1/1 PRC, 1/1 PLC, p2, 2/2 RC, p2, 1/1 PRC, (1/1 PLC, p2) 3 times, 1/1 PLC, p4.

Row 40: P3, 1/1 PRC, p6, (1/1 PRC, p2) twice, k1b, p2, k4, p2, k1b, (p2, 1/1 PLC) twice, p6, 1/1 PLC, p3.

Row 42: P2, p2tog, p6, (1/1 PRC, p2) 3 times, 2/2 RC, (p2, 1/1 PLC) 3 times, p6, p2togb, p2 -- 46 sts.

Row 44: P8, 1/1 PRC, p6, 1/1 PRC, p1, 2/2 PRC, 2/2 PLC, p1, 1/1 PLC, p6, 1/1 PLC, p8.

Row 46: P7, p2tog, p6, 1/1 PRC, p1, 1/1 PRC, 1/1 PLC, p2, 1/1 PRC, 1/1 PLC, p1, 1/1 PLC, p6, p2togb, p7 -- 44 sts.

Row 48: P13, 1/1 PRC, p1, 1/1 PRC, p2, k1b, p2, k1b, p2, 1/1 PLC, p1, 1/1 PLC, p13.

Row 50: P12, p2tog, p1, (1/1 PRC, p2) twice, 1/1 PLC, p2, 1/1 PLC, p1, p2togb, p12 -- 42 sts.

Row 52: P17, 1/1 PRC, p4, 1/1 PLC, p17.

Row 54: P17, k1b, p6, k1b, p17.

Row 56: P16, p2tog, p6, p2togb, p16 -- 40 sts.

Row 58: P40.

Dividing Pattern

Row 1 (RS): Knit.

Row 2: Purl.

Rows 3 and 4: Rep Rows 1 and 2.

Rows 5-10: Purl.

Rows 11-14: Rep Rows 1-4.

Flower Garden

Row 1 (RS): Inc 1 in first st, p10, *k1b (twisted knit st), p11; rep from *, end, p1.

Rows 2, 4, 6 and 8: K12, *p1b, k11; rep from *, end k1.

Rows 3 and 5: P12, *k1b, p11; rep from *, end p1.

Row 7: P8, *insert a crochet hook (or point of right needle) from front through the fabric at right of the twisted knit st in first row, catch yarn and draw up a long, loose loop; sl this loop onto right needle, knit next st and pass the loop over st, p3, k1b, p3, draw up another loop from left of same st in first row, sl the loop onto right needle, knit next st and pass loop over it, p3; rep from *, end p5.

Row 9: P12, *((k1, yo) 3 times, k1) all in same st making 7 sts from one, p11; rep from *, end p1.

Row 10: K12, *p7, k11; rep from *, end k1.

Row 11: P12, *k2togb, k3togb, k2togb, p11; rep from *, end p1.

Row 12: K12, *p3tog, k11; rep from *, end k1.

Rows 13, 15 and 17: P6, *k1b (twisted knit st), p11; rep from *, end last rep p6.

Rows 14, 16, 18 and 20: K6, *p1b, k11; rep from *, end last rep k6.

Row 19: P2, *draw up a loop from right of twisted knit st in Row 13 and pass loop over next st as before, p3, k1b, p3, draw up another loop from left of same st and pass loop over next st as before, p3; rep from *, end last rep p2.

Row 21: P6, *((k1, yo) 3 times, k1) all in same st, p11; rep from *, end last rep p6.

Row 22: K6, *p7, k11; rep from *, end last rep k6.

Row 23: P6, *k2togb, k3togb, k2togb, p11; rep from *, end last rep p6.

Row 24: K6, *p3tog, k11; rep from *, end last rep k6.

Rows 25-48: Rep Rows 1-24 once more, except on Row 1, beg p12 (do not increase), decrease 1 st at end of Row 48 -- 180 sts.

NOTES:

For help on the Tulip Border, please refer to the chart in the [Baby Tree of Life Throw pattern](#) [here](#).

AFGHAN

Cast on 180 sts.

K 1 row. p 1 row.

Row 1 (WS): *K4, work Row 1 of Twin Trees pattern or follow Chart Row 1 for 40 sts; rep from * 3 more times, k4.

Row 2: *P4, work Row 2 of Twin Trees pattern or follow Chart Row 2 for 40 sts; rep from * 3 more times, p4.

Continue in established pattern following row-by-row instructions or consecutive rows of Chart for 58 rows, ending with a RS row.

P 1 row.

Work Rows 1-14 of Dividing pattern.

Work Rows 1-48 of Flower Garden pattern.

Work Rows 1-14 of Dividing pattern.

K 1 row.

Work Rows 1-58 of Twin Trees pattern (or follow Twin Trees Chart).

P 1 row.

Work Rows 1-14 of Dividing pattern.

Work Rows 1-48 of Flower Garden pattern.

Work Rows 1-14 of Dividing pattern.

K 1 row.

Work Rows 1-58 of Twin Trees pattern (or follow Twin Trees Chart).

Bind off all sts.

FINISHING

Tulip-Bud Border

Cast on 8 sts.

Row 1 (RS): K5, yo, k1, yo, k2 -- 10 sts.

Row 2: P6, k into front and back of next st (inc made), k3 -- 11 sts.

Row 3: K4, p1, k2, yo, k1, yo, k3 -- 13 sts.

Row 4: P8, inc in next st, k4 -- 14 sts.

Row 5: K4, p2, k3, yo, k1, yo, k4 -- 16 sts.

Row 6: P10, inc in next st, k5 -- 17 sts.

Row 7: K4, p3, k4, yo, k1, yo, k5 -- 19 sts.

Row 8: P12, inc in next st, k6 -- 20 sts.

Row 9: K4, p4, ssk, k7, k2tog, k1 -- 18 sts.

Row 10: P10, inc in next st, k7 -- 19 sts.

Row 11: K4, p5, ssk, k5, k2tog, k1 -- 17 sts.

Row 12: P8, inc in next st, k2, p1, k5 -- 18 sts.

Row 13: K4, p1, k1, p4, ssk, k3, k2tog, k1 -- 16 sts.

Row 14: P6, inc in next st, k3, p1, k5 -- 17 sts.

Row 15: K4, p1, k1, p5, ssk, k1, k2tog, k1 -- 15 sts.

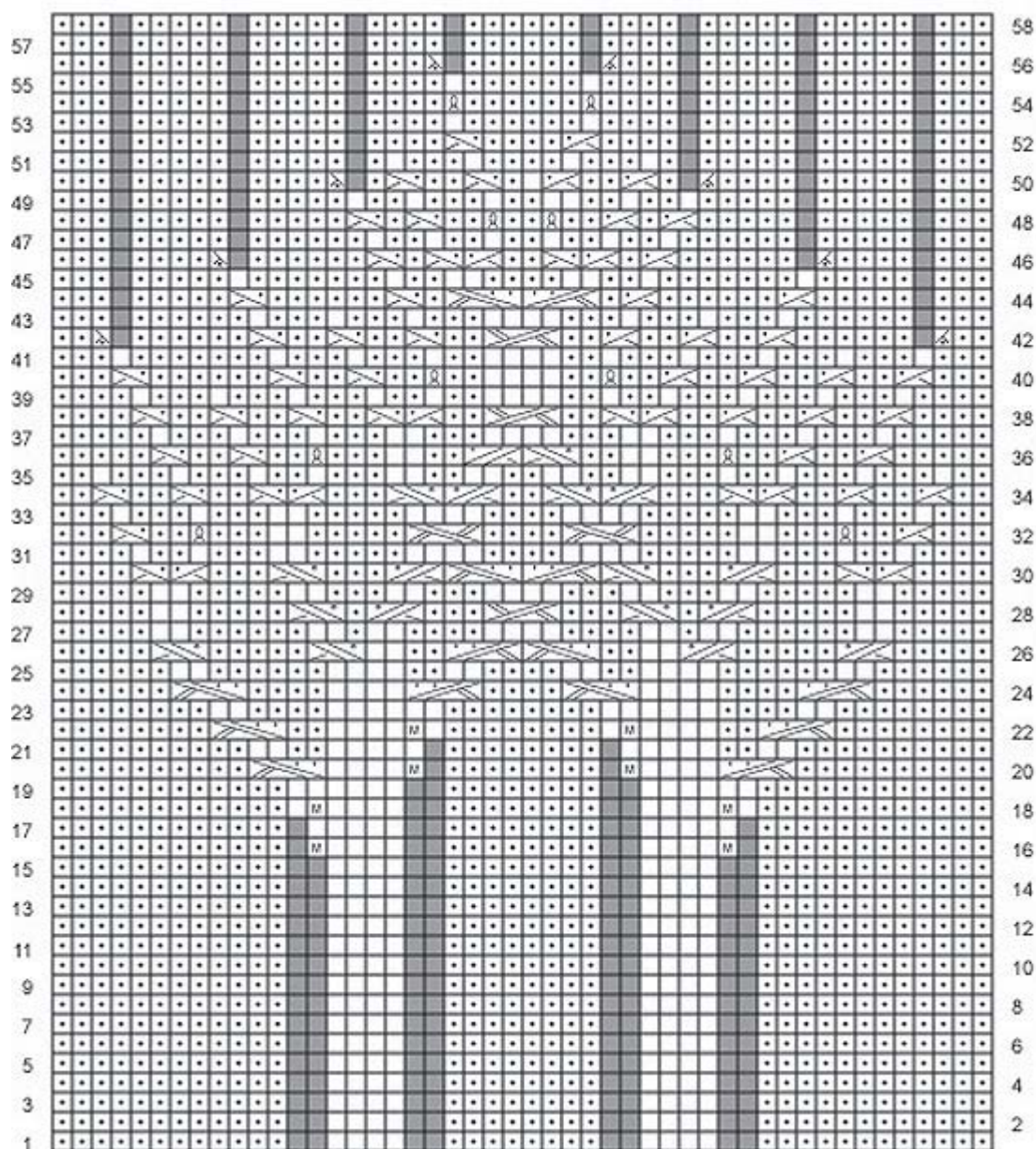
Row 16: P4, inc in next st, k4, p1, k5 -- 16 sts.

Row 17: K4, p1, k1, p6, sl 1-k2tog-ssso, k1 -- 14 sts.

Row 18: P2tog, bind off next 5 sts using p2tog st to bind off first st, p3, k4 -- 8 sts.

Rep Rows 1-18 until border fits around Afghan (approximately 188 in. (477.5 cm)).

Note: It is helpful to sew border in place as you knit. Bind off. Finish sewing border in place around Afghan. Weave in ends.



- = K on RS, p on WS
- = P on RS, k on WS
- = P2 tog
- = P2 tog through the back loops
- = Make 1 stitch
- = K through the back loop
- = No stitch
- = Slip next st onto cable needle and hold in back, k1, p1 from cable needle
- = Slip next st onto cable needle and hold in front, p1, k1 from cable needle
- = Slip next st onto cable needle and hold in back, k2, p1 from cable needle
- = Slip next 2 sts onto cable needle and hold in front, p1, k2 from cable needle
- = Slip next 2 sts onto cable needle and hold in back, k2, k2 from cable needle
- = Slip next 2 sts onto cable needle and hold in front, k2, k2 from cable needle
- = Slip next 2 sts onto cable needle and hold in back, k2, p2 from cable needle
- = Slip next 2 sts onto cable needle and hold in front, p2, k2 from cable needle

ABBREVIATIONS / REFERENCES Click for explanation and illustration	
<u>beg = begin(s)(ning)</u>	<u>inc = increas(e)(s)(ing)</u>
<u>k = knit</u>	<u>k1b = knit through the back loop</u>
<u>k2tog = knit 2 together</u>	<u>k2togb = Knit 2 stitches together through back loop</u>
<u>k3tog = knit 3 together</u>	<u>k3togb = Knit 3 stitches together through back loop</u>
<u>p1b = purl through the back loop</u>	<u>p2togb = purl 2 together in back</u>
<u>p3tog = purl 3 together</u>	<u>pssso = pass slipped stitch over</u>
<u>rep = repeat(s)(ing)</u>	<u>RS = right side</u>
<u>sl = slip</u>	<u>st(s) = stitch(es)</u>
<u>WS = wrong side</u>	<u>yo = yarn over</u>

Learn to knit instructions: [**http://learnToKnit.LionBrand.com**](http://learnToKnit.LionBrand.com)

Every effort has been made to have the knitting and crochet instructions accurate and complete. We cannot be responsible for variance of individual knitters and crocheters, human errors, or typographical mistakes.

We want your project to be a success! If you need help with this or any other Lion Brand pattern, e-mail support is available 7 days per week. Just click [here](#) to explain your problem and someone will help you!

For thousands of free patterns, visit our website www.LionBrand.com

To order visit our website www.lionbrand.com **or call: (800) 258-YARN (9276) any time!**

When in New York City, visit the Lion Brand Yarn Studio where we have the largest selection of our yarns anywhere and over 100 classes and events monthly.

34 West 15th Street, NY, NY 10011

Copyright ©1998-2015 Lion Brand Yarn Company, all rights reserved. No pattern or other material may be reproduced -- mechanically, electronically, or by any other means, including photocopying -- without written permission of Lion Brand Yarn Company.