

# Audi A6

## Current Flow Diagram

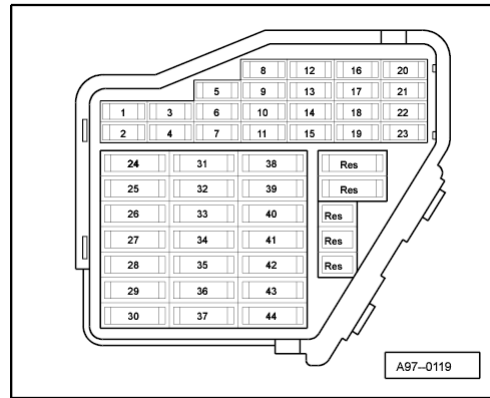
# No. 58 / 1

Edition 04.1999

### Automatic gearbox (01V), (01L)

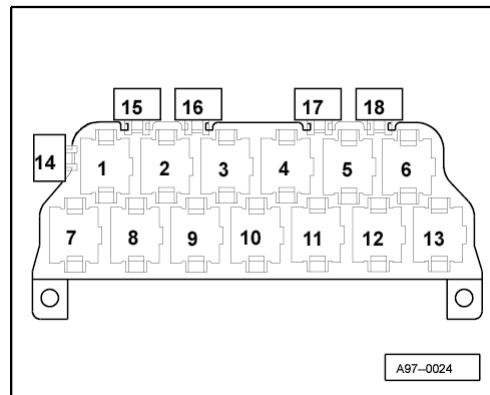
Model year 1999

#### Fuse box



From fuse number 23 upwards the fuses in the fuse box are designated as 223 etc. in the Current Flow Diagram.

#### 13-point relay carrier



Position of relays:

4 - Starter inhibitor relay (J207)

Fuse colours:

30 A - green

25 A - white

20 A - yellow

15 A - blue

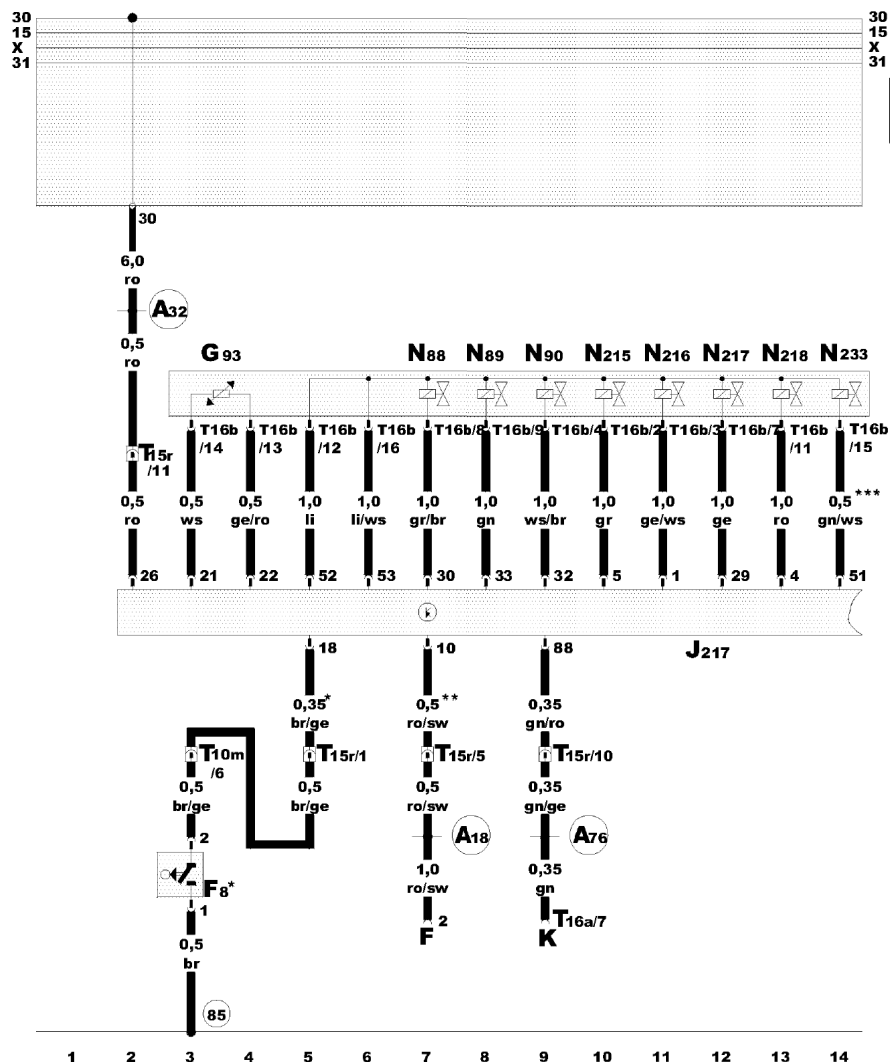
10 A - red

7.5 A - brown

# Audi A6

## Current Flow Diagram

### No. 58 / 2



#### Automatic gearbox control unit, solenoid valves, kick-down switch

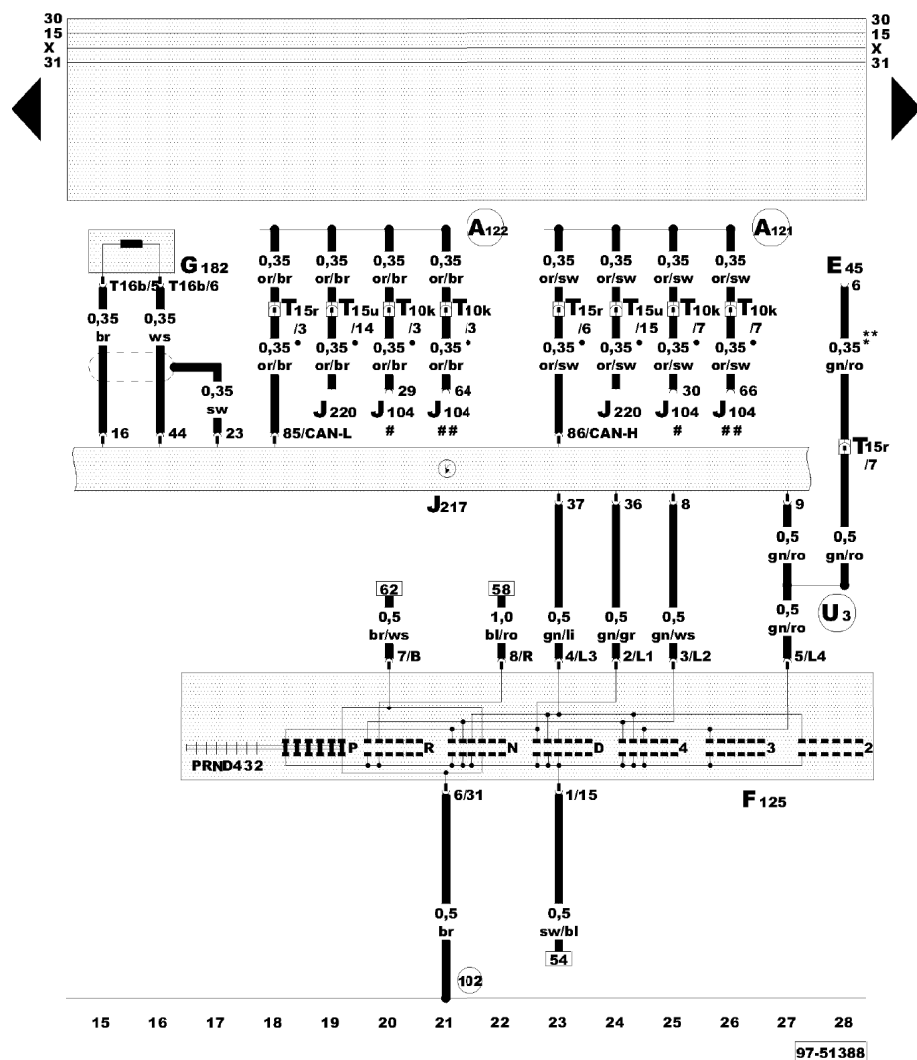
- F - Brake light switch
- F8 - Kick-down switch
- G93 - Gearbox oil temperature sender
- J217 - Automatic gearbox control unit
- K - Diagnosis connection
- N88 - Solenoid valve 1
- N89 - Solenoid valve 2
- N90 - Solenoid valve 3
- N215 - Automatic gearbox pressure control valve -1-
- N216 - Automatic gearbox pressure control valve -2-
- N217 - Automatic gearbox pressure control valve -3-
- N233 - Automatic gearbox pressure control valve -5-
- T10m - 10-pin connector, blue, connector point, electronics box, plenum chamber
- T15r - 15-pin connector, brown, connector point, right A pillar
- T16a - 16-pin connector, diagnosis connection
- T16b - 16-pin connector, on gearbox
- A18 - Connection (54), in dash panel wiring harness
- A32 - Positive (+) connection (30), in dash panel wiring harness
- A76 - Connection (diagnosis wire K), in dash panel wiring harness
- \* - Models without electronic throttle
- \*\* - Only gearbox 01V, does not V8, 3.7 l engine
- \*\*\* - Only gearbox 01L

ws = white  
 sw = black  
 ro = red  
 br = brown  
 gn = green  
 bl = blue  
 gr = grey  
 li = purple  
 ge = yellow  
 or = orange  
 rs = pink

# Audi A6

## Current Flow Diagram

### No. 58 / 3



#### Automatic gearbox control unit, multi-function switch

- E45 - Cruise control system switch
- F125 - Multi-function switch
- G182 - Gearbox input speed sender
- J104 - ABS with EDL control unit
- J217 - Automatic gearbox control unit
- J220 - Motronic control unit
- T10k - 10-pin connector, orange, connector point, A pillar, left
- T15r - 15-pin connector, brown, connector point, right A pillar
- T15u - 15-pin connector, red, connector point, electronics box, plenum chamber
- T16b - 16-pin connector, on gearbox
- 102 - Earth connection, in gearbox wiring harness
- A121 - Connection (high bus), in dash panel wiring harness
- A122 - Connection (low bus), in dash panel wiring harness
- U3 - Connection -1-, in automatic gearbox wiring harness

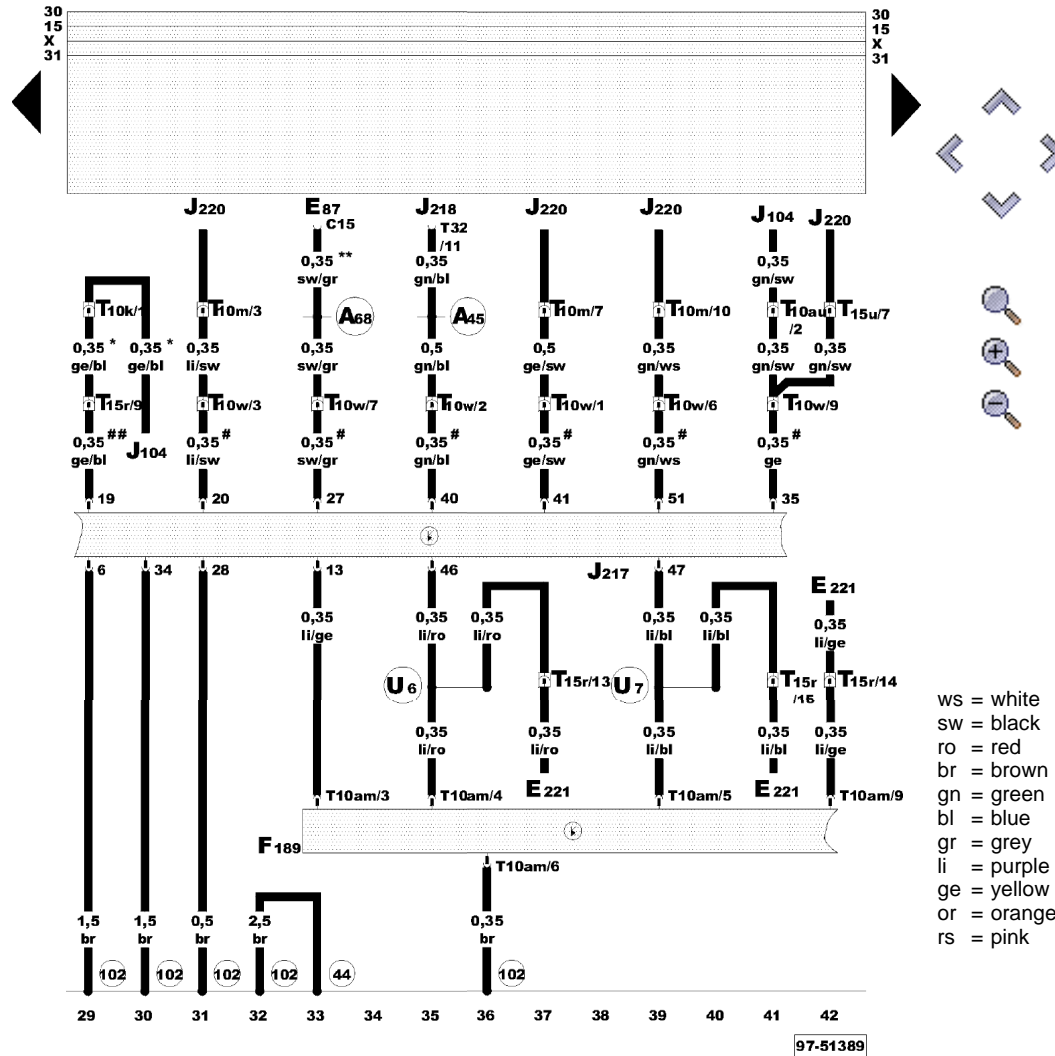
- - CAN bus (data wire)
- \* - Models with cruise control system
- \*\* - Models without electronic throttle
- # - Models with ABS 5.3
- ## - Models with ABS with ESP

ws = white  
 sw = black  
 ro = red  
 br = brown  
 gn = green  
 bl = blue  
 gr = grey  
 li = purple  
 ge = yellow  
 or = orange  
 rs = pink

# Audi A6

## Current Flow Diagram

### No. 58 / 4



#### Automatic gearbox control unit, Tiptronic switch

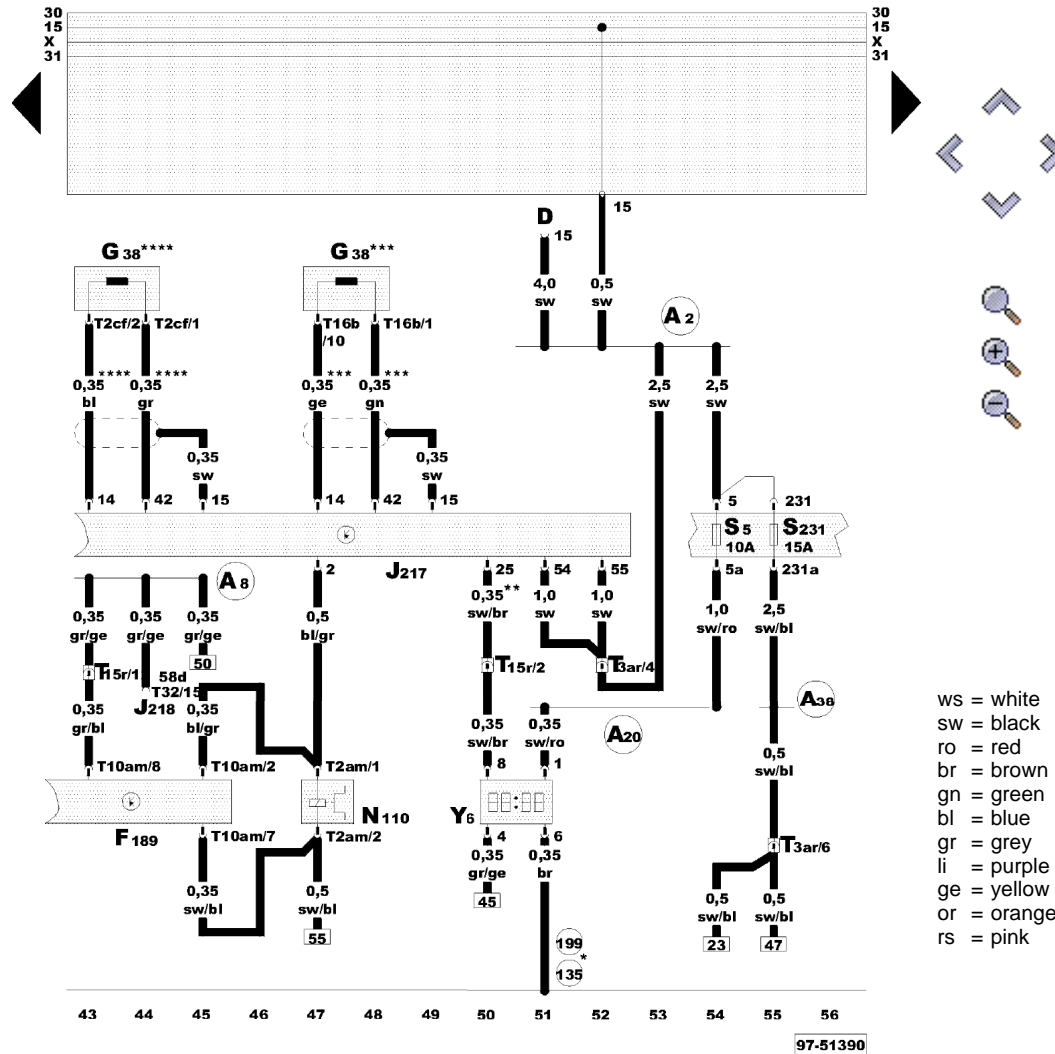
- E87 - Control and display unit for air conditioner/Climatronic
- E221 - Operating unit in steering wheel
- F189 - Tiptronic switch
- J104 - ABS with EDL control unit
- J217 - Automatic gearbox control unit
- J218 - Combi-processor in dash panel insert
- J220 - Motronic control unit
- T10k - 10-pin connector, orange, connector point, A pillar, left
- T10m - 10-pin connector, blue, connector point, electronics box, plenum chamber
- T10w - 10-pin connector, blue, connector point, A pillar, right
- T10am - 10-pin connector, selector lever console
- T10au - 10-pin connector, grey, connector point, A pillar, right
- T15r - 15-pin connector, brown, connector point, right A pillar
- T15u - 15-pin connector, red, connector point, electronics box, plenum chamber
- T32 - 32-pin connector, blue, on dash panel insert
- 4 - Earth strap, battery - body - gearbox
- 102 - Earth connection, in gearbox wiring harness
- A45 - Connection (engine speed signal), in dash panel wiring harness
- A68 - Connection (30, air conditioner), in dash panel wiring harness
- U6 - Connection -2-, in automatic gearbox wiring harness
- U7 - Connection (87), in automatic gearbox wiring harness
- \* - Models with traction control system switch
- \*\* - Models with air conditioner
- # - Only gearbox 01V without CAN bus (data wire)
- ## - Only ABS without CAN bus (data wire)

97-51389

# Audi A6

## Current Flow Diagram

### No. 58 / 5



#### Automatic gearbox control unit, Tiptronic switch, selector lever lock solenoid, selector lever position indicator

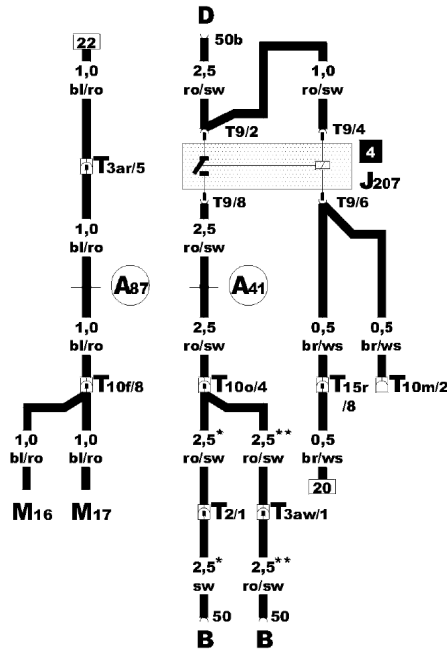
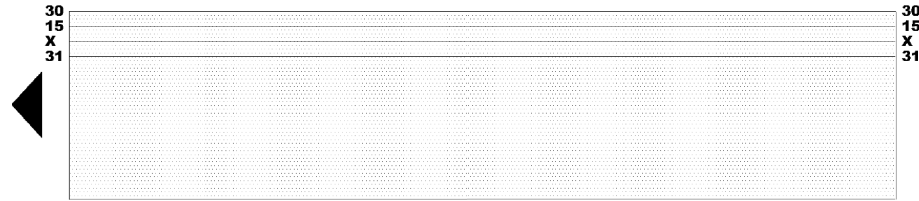
- D - Ignition/starter switch
- F189 - Tiptronic switch
- G38 - Gearbox speed sender
- J217 - Automatic gearbox control unit
- J218 - Combi-processor in dash panel insert
- N110 - Selector lever lock solenoid
- S5 - Fuse in fuse box
- S231 - Fuse in fuse box
- T2am - 2-pin connector, black, on selector lever console
- T2cf - 2-pin connector, black, on gearbox
- T3ar - 3-pin connector, brown, connector point, right A pillar
- T10am - 10-pin connector, on selector lever console
- T15r - 15-pin connector, brown, connector point, right A pillar
- T16b - 16-pin connector, on gearbox
- T32 - 32-pin connector, blue, on dash panel insert
- Y6 - Selector lever position indicator
- 135 - Earth connection -2-, in dash panel wiring harness
- 199 - Earth connection -3-, in dash panel wiring harness
- A2 - Positive (+) connection (15), in dash panel wiring harness
- A8 - Positive (+) connection (58d), in dash panel wiring harness (display illumination)
- A20 - Positive (+) connection (15a), in dash panel wiring harness
- A38 - Positive (+) connection -2- (15a), in dash panel wiring harness
- \* - Both possible
- \*\* - Does not models with CAN bus (data wire)
- \*\*\* - Models with gearbox 01V
- \*\*\*\* - Models with gearbox 01L

ws = white  
 sw = black  
 ro = red  
 br = brown  
 gn = green  
 bl = blue  
 gr = grey  
 li = purple  
 ge = yellow  
 or = orange  
 rs = pink

# Audi A6

## Current Flow Diagram

### No. 58 / 6



ws = white  
 sw = black  
 ro = red  
 br = brown  
 gn = green  
 bl = blue  
 gr = grey  
 li = purple  
 ge = yellow  
 or = orange  
 rs = pink

#### Reversing light, starter inhibitor relay

- B - Starter
- D - Ignition/starter switch
- J207 - Starter inhibitor relay
- M16 - Reversing light bulb, left
- M17 - Reversing light bulb, right
- T2 - 2-pin connector, grey, in engine compartment, right
- T3ar - 3-pin connector, brown, connector point, right A pillar
- T3aw - 3-pin connector, black, in engine compartment, left
- T9 - 9-pin connector, brown, at starter inhibitor relay
- T10f - 10-pin connector, brown, connector point, A pillar, left
- T10m - 10-pin connector, blue, connector point, electronics box, plenum chamber
- T10o - 10-pin connector, brown, connector point, electronics box, plenum chamber
- T15r - 15-pin connector, brown, connector point, right A pillar
- A41 - Positive (+) connection (50), in dash panel wiring harness
- A87 - Connection (RF (reversing light)), in dash panel wiring harness
- \* - Models with 4- and 6-cylinder engine
- \*\* - Models with 8 cylinder engines