

FFXV - Hammerhead

Arranged by Lunar Black

Music by Yoko Shimomura

Measures 1-6 of the piece. The key signature is one sharp (F#) and the time signature is 4/4. The melody in the right hand starts with a half note F#4, followed by quarter notes G4, A4, B4, and C5. The bass line consists of chords of F#4, G#4, and A4, each repeated three times per measure.

Measures 7-12. Measure 7 features a whole note chord of F#4 and G#4 in the right hand. Measures 8-12 show a rising melody in the right hand: quarter notes G4, A4, B4, C5, D5, E5, and a half note F#5. The bass line continues with chords of F#4, G#4, and A4, each repeated three times per measure.

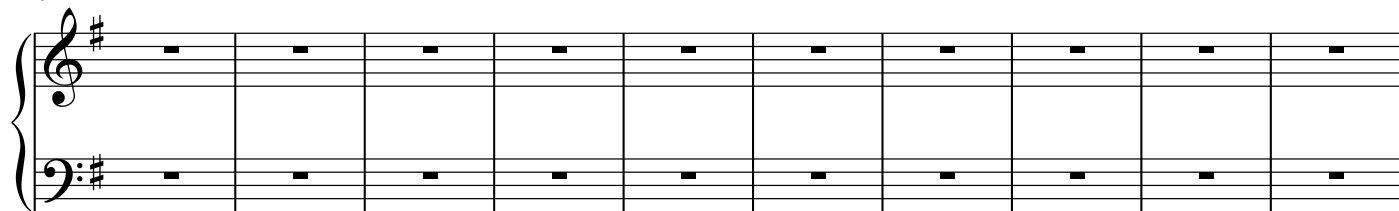
Measures 13-17. The melody in the right hand continues: quarter notes F#4, G4, A4, B4, C5, D5, and a half note E5. The bass line continues with chords of F#4, G#4, and A4, each repeated three times per measure.

Measures 18-23. The melody in the right hand continues: quarter notes D5, E5, F#5, G5, A5, B5, and a half note C6. The bass line continues with chords of F#4, G#4, and A4, each repeated three times per measure.

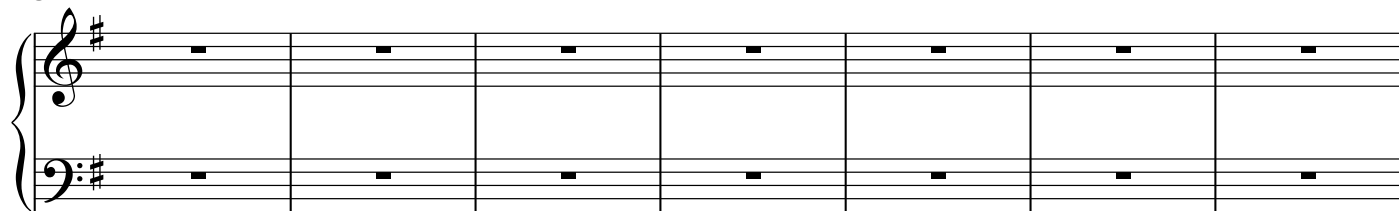
Measures 24-30. Measure 24 has a first ending (1.) with a whole note chord of F#4 and G#4. Measure 25 has a second ending (2.) with a whole note chord of F#4 and G#4. Measures 26-30 show a rising melody in the right hand: quarter notes F#4, G4, A4, B4, C5, D5, and a half note E5. The bass line continues with chords of F#4, G#4, and A4, each repeated three times per measure.

Measures 31-40. The piece ends with ten measures of whole rests in both the right and left hands.

41



51



58

