



WORSHIP SATAN AND KEEP WARM





LET ME INTRODUCE TO YOU THIS MODESTLY SATANIC PULLOVER THAT I´VE DESIGNED IN A MOST EXCITING COLLABORATION WITH MY DEAR FRIEND MR. S. SINCE I WANT YOU ALL TO KNIT ALONG I´VE SHARED THIS CHART AS A FREE DOWNLOAD.

SINCE I DON'T HAVE THE PRIVILEGE TO MAKE MY LIVING OUT OF KNITTING, SADLY, I HAVEN'T GOT THE RESOURCES TO DEVELOP THIS CHART TO A PATTERN WITH OPTIONS OF SIZES AND SO.

THE FOLLOWING CHART, THEREFORE IS BASED ONLY ON MY MEASUREMENT-AND PREFERENCES.

HOWEVER, YOU CAN EASILY TRANSFER THE CHART TO ANY OF YOUR FAVOURITE STRANDED PATTERNS OR MAKE UP A NEW ONE. EVERYTHING IS POSSIBLE WITH A LITTLE IMAGINATION AND A GOOD SWATCH, FEEL FREE TO FREESTYLE.

ALL YOU NEED TO DO TO GET STARTED IS TO PRINT THIS PAGE AND SIGN YOUR NAME IN BLOOD BELOW.

ਪੰਨਾ ਵਿੱਚ ਸੁਕਾਈ ਗਏ :
: ੨੦੨੦

NAME / DATE



SIZE BUST 102 CM
 LENGTH M FRONT 47 CM (EXL RIB)
 SLEEVE UNDERARM 41 CM (INCL RIB)

YARN RAUMA FINULL
 200 G, C 4387
 200 G, C 452

NEEDLES 2 MM FOR RIBBING, DPN AND CIRCULAR
 3 MM WHEN WORK STRANDED PARTS

GAUGE MEASURED IN STRANDED STOCKINETTE
 10 X 10 CM = 24 ROUNDS X 24 STS

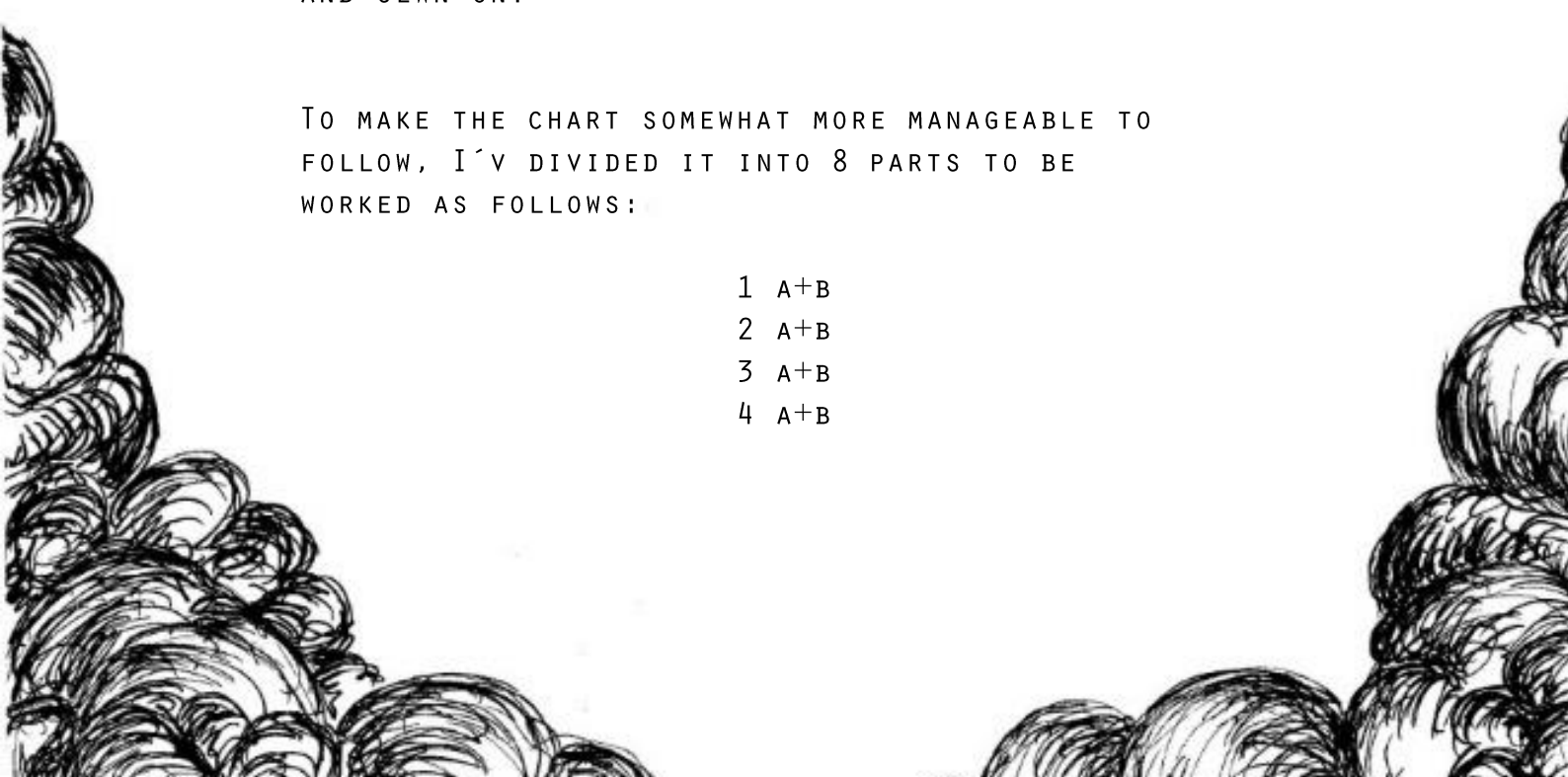
OTHER STITCH MARKERS
 SHOULDERPADS

RIB PATTERN *K1 TBL, P1*

THE PULLOVER IS WORKED IN THE ROUND, STARTING FROM THE BOTTOM. SLEEVES WORKED SEPARATELY IN THE ROUND AND SEWN ON.

TO MAKE THE CHART SOMEWHAT MORE MANAGEABLE TO FOLLOW, I´V DIVIDED IT INTO 8 PARTS TO BE WORKED AS FOLLOWS:

- 1 A+B
- 2 A+B
- 3 A+B
- 4 A+B





BODY

WITH 3 MM NEEDLE CO 240 ST PROVISIONAL,
JOIN IN THE ROUND AND WORK CHART "BODY".

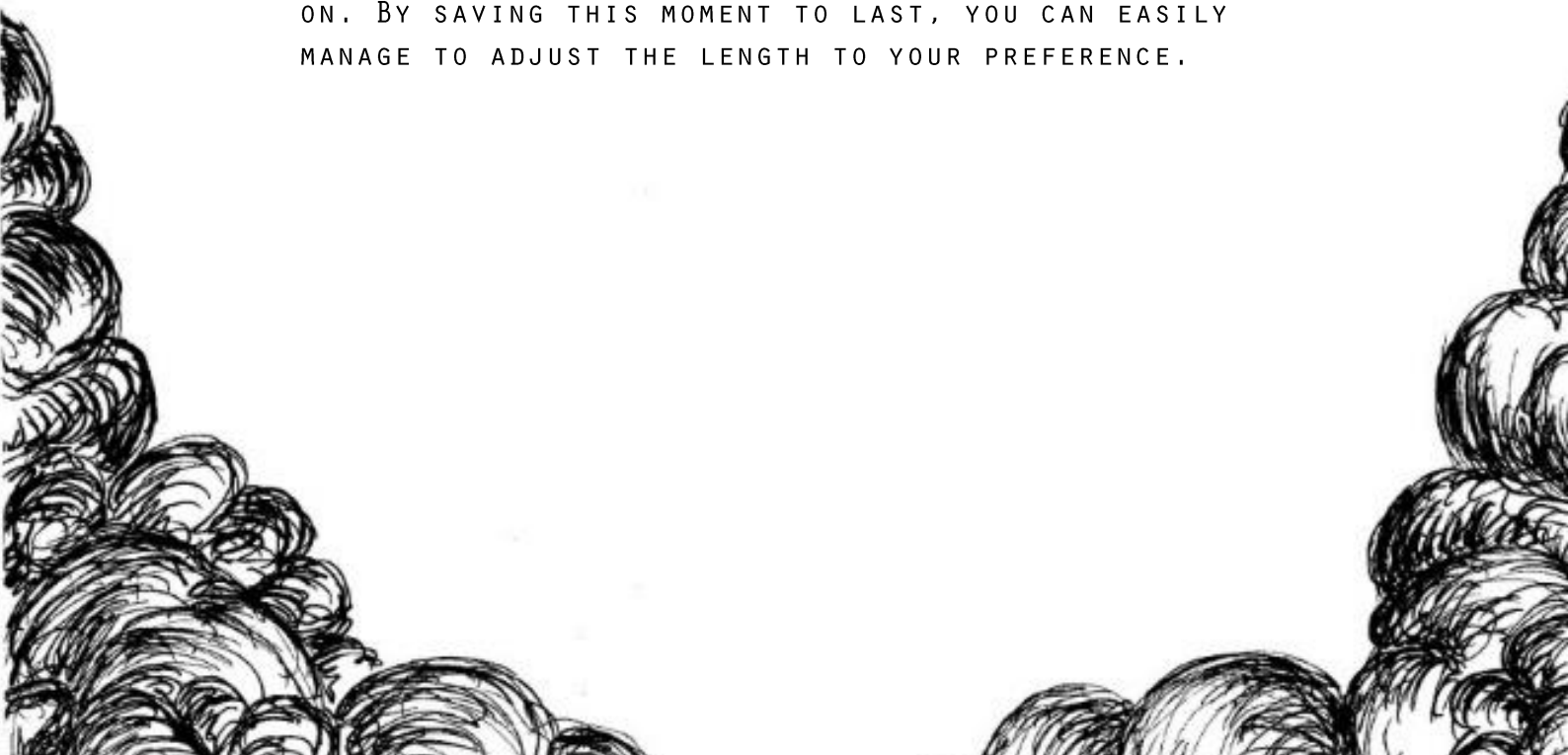
I RECOMMEND YOU TO USE MARKERS TO EASE ON THE
COUNTING, THE HEAVIER LINES IN THE CHARTS INDICATES
WHERE I PLACED THEM.

ON ROWS 126 AND 132 (AFTER WHERE YOU HAVE CAST OF
FOR SLEEVES, FRONT-AND BACK NECK) CO 7 STITCHES FOR
STEERING. NOW YOU CAN KEEP ON WORKING IN THE ROUND.

WHEN CHART IS DONE, CUT THE STEEKS AND JOIN
SHOULDER SEAMS FOR I.E. WITH A THREE NEEDLE BIND
OF.

WITH 2MM NEEDLES PICK UP AND WORK RIB AROUND THE
NECKLINE AS HIGH AS PREFERED. I MADE IT DOUBLE BY
MAKING 1 P ROW AND THEN THE SAME NUMBER OF ROWS AS
JUST WORKED IN RIB TO BE FOLDED AND SEWN DOWN ALONG
THE PICK UP-STITCHES AT THE WRONG SIDE.

PICK UP AND WORK RIB AT THE BOTTOM PROVISIONAL CAST
ON. BY SAVING THIS MOMENT TO LAST, YOU CAN EASILY
MANAGE TO ADJUST THE LENGTH TO YOUR PREFERENCE.





SLEEVES

WITH 2 MM NEEDLES CO 58 ST AND K IN RIB UNTIL
PIECE MEASURES 9 CM.

K 1 R WHILE EVENLY INCREASE 13 ST = 71 ST.

CHANGE TO 3 MM NEEDLES AND WORK CHART "SLEEVE" IN
THE ROUND UNTIL IT'S TIME TO CO FOR UNDER ARMS.
THEN MAKE THE OTHER ARM, AND ON ROW AFTER CASTING
OF FOR UNDER ARMS, CO 7 ST FOR STEEKING IN EACH
SIDE AND KEEP WORKING BOTH ARMS TOGETHER IN THE
ROUND.

AFTER LAST ROW IS WORKED, K3 TOG THROUGH ALL ROW
(NOT STEEKS THOUGH) AND CAST OF TIGHTLY.

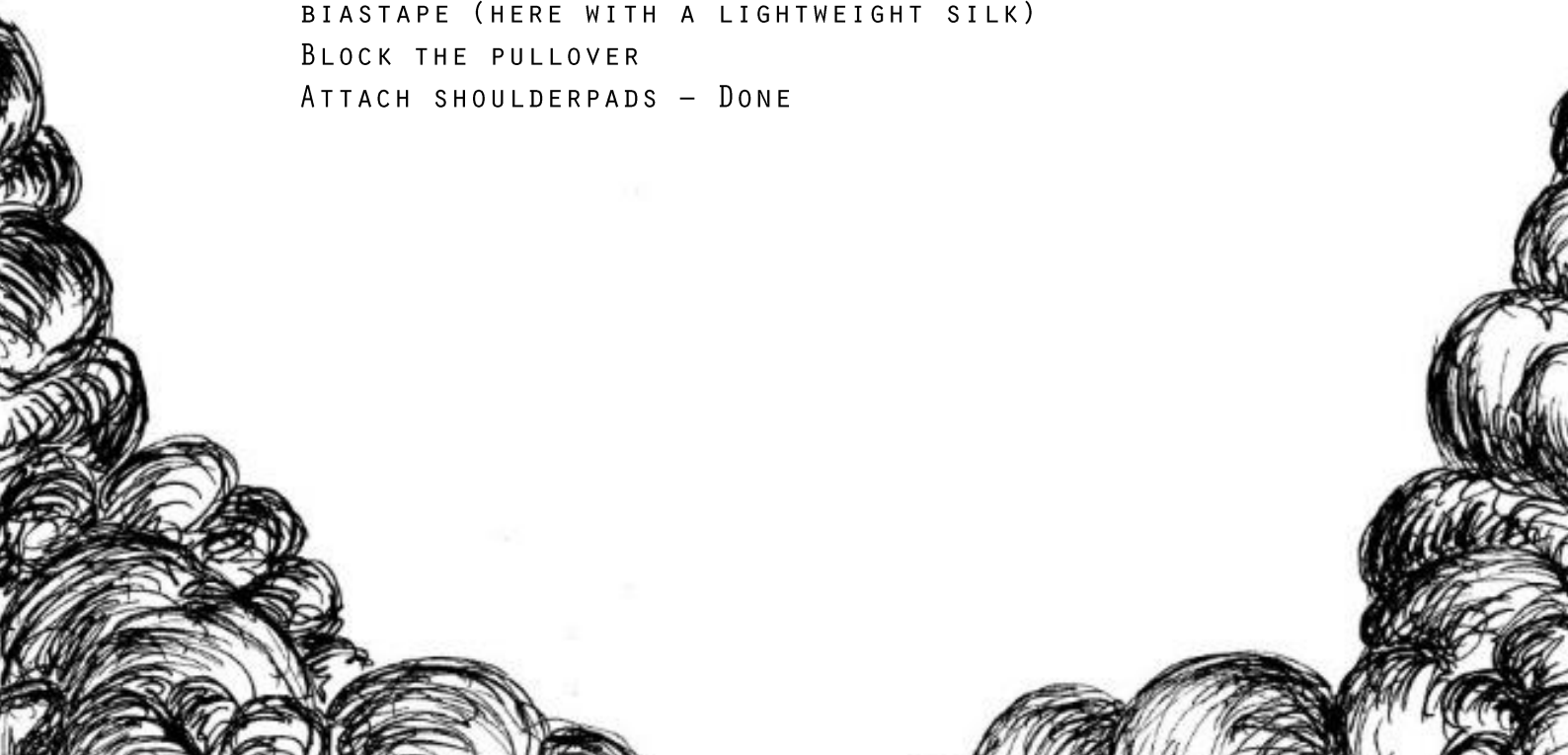
FINNISHING

CUT THE STEEKS AND SEW ARMS TO THE BODY.

I LIKE TO COVER THE RAW EDGES FROM THE STEEK WITH A
BIASTAPE (HERE WITH A LIGHTWEIGHT SILK)

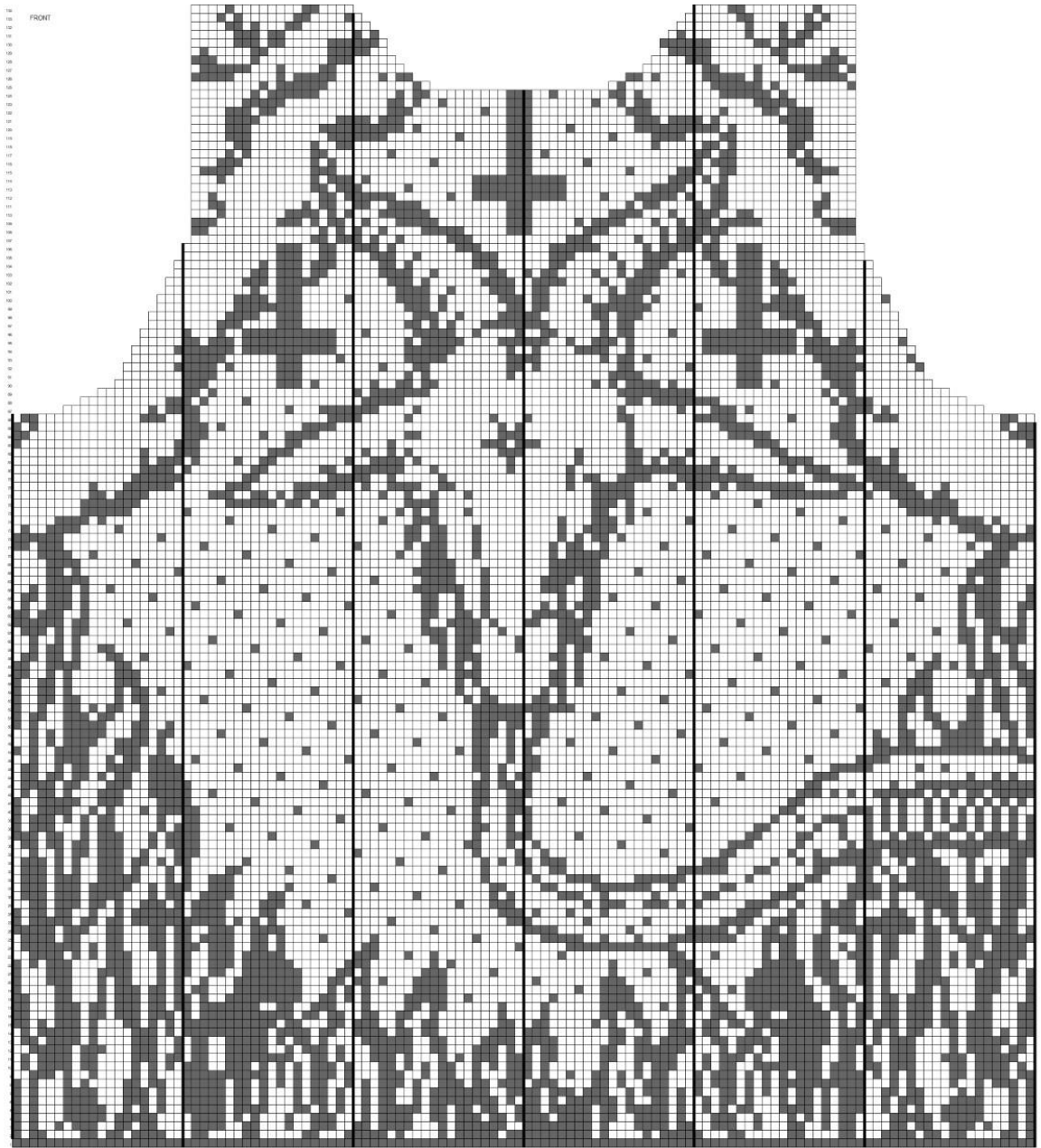
BLOCK THE PULLOVER

ATTACH SHOULDERPADS - DONE





CHARTS



BACK

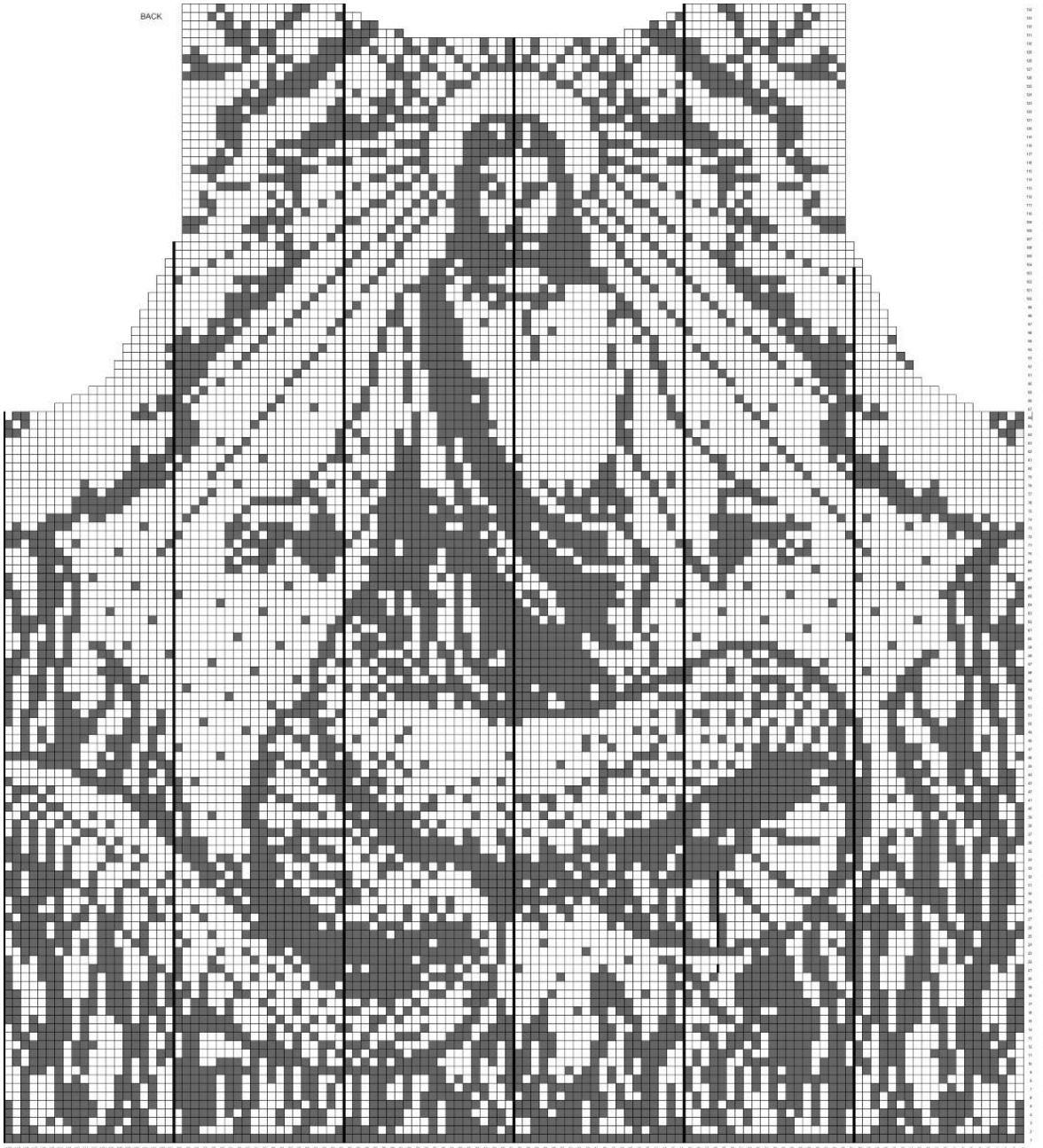
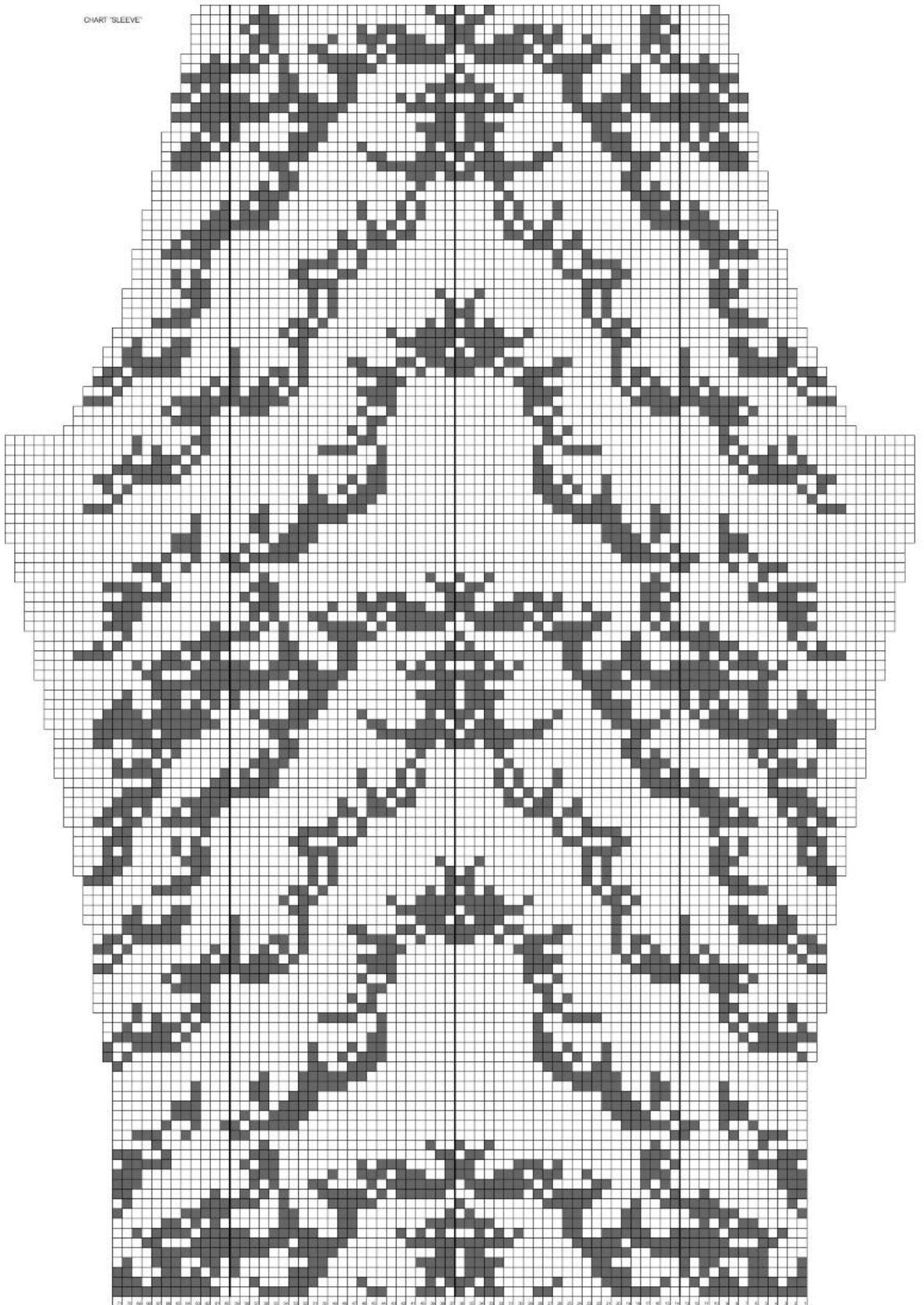
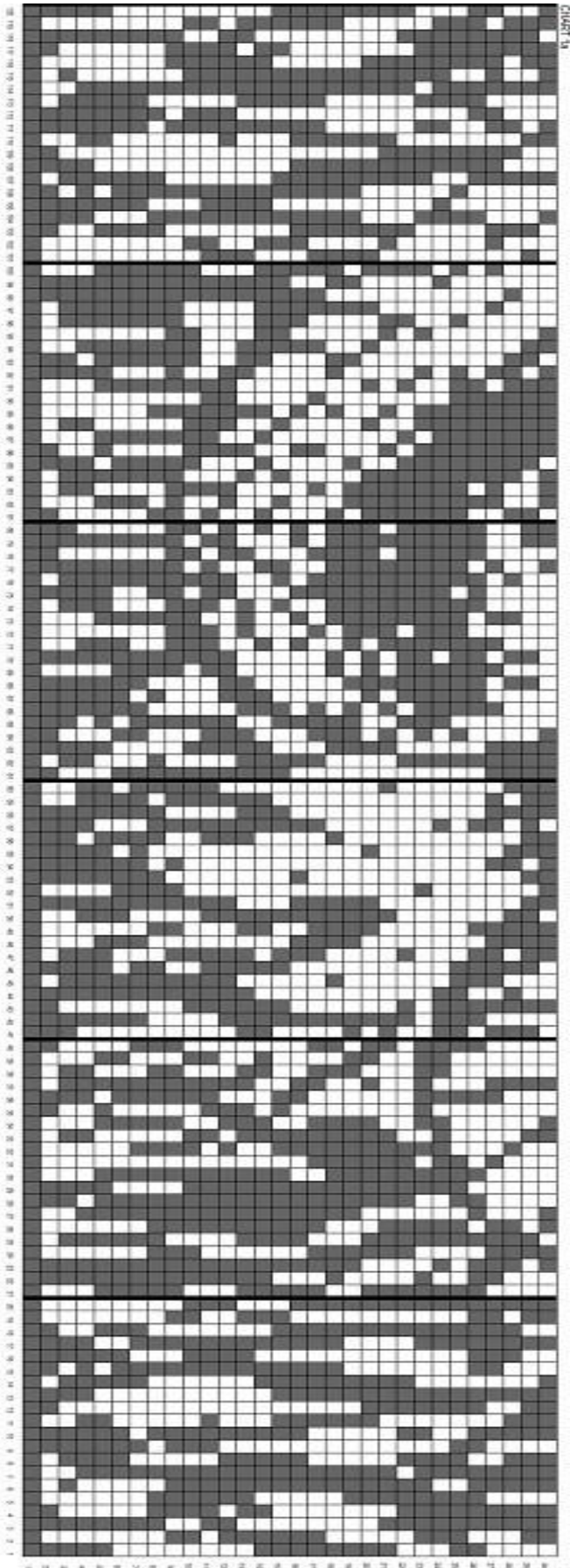


CHART 'SLEEVE'





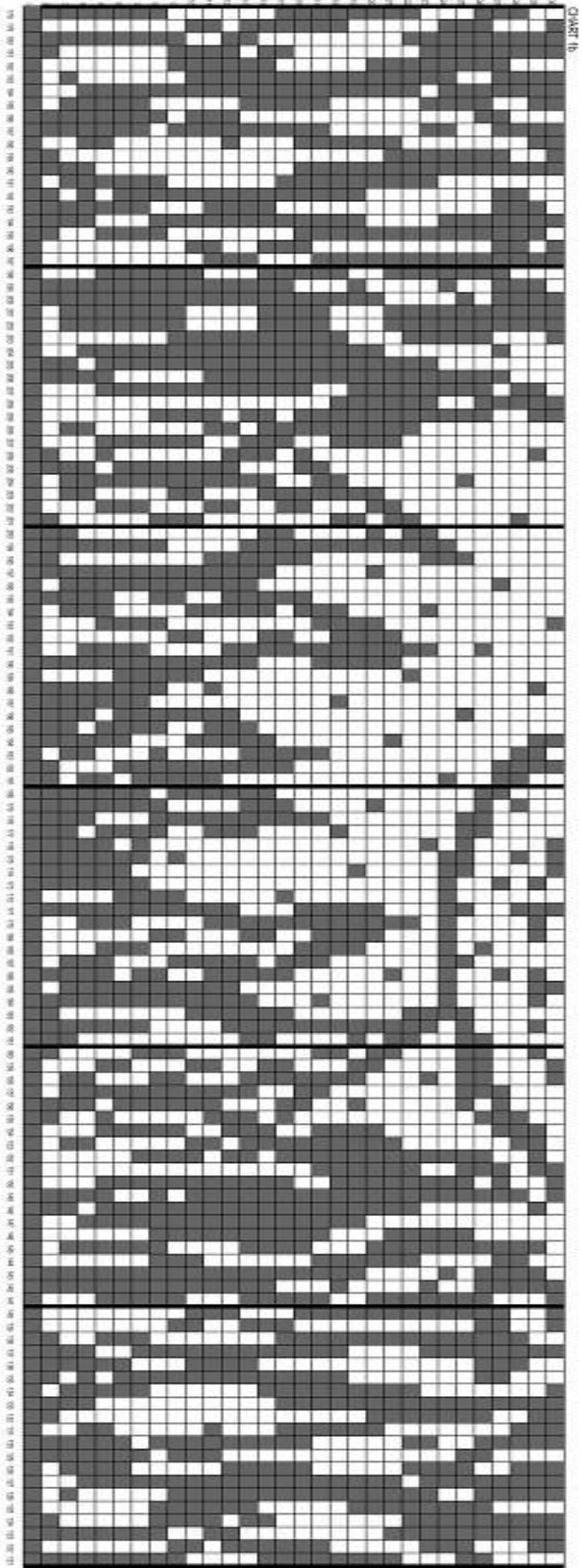
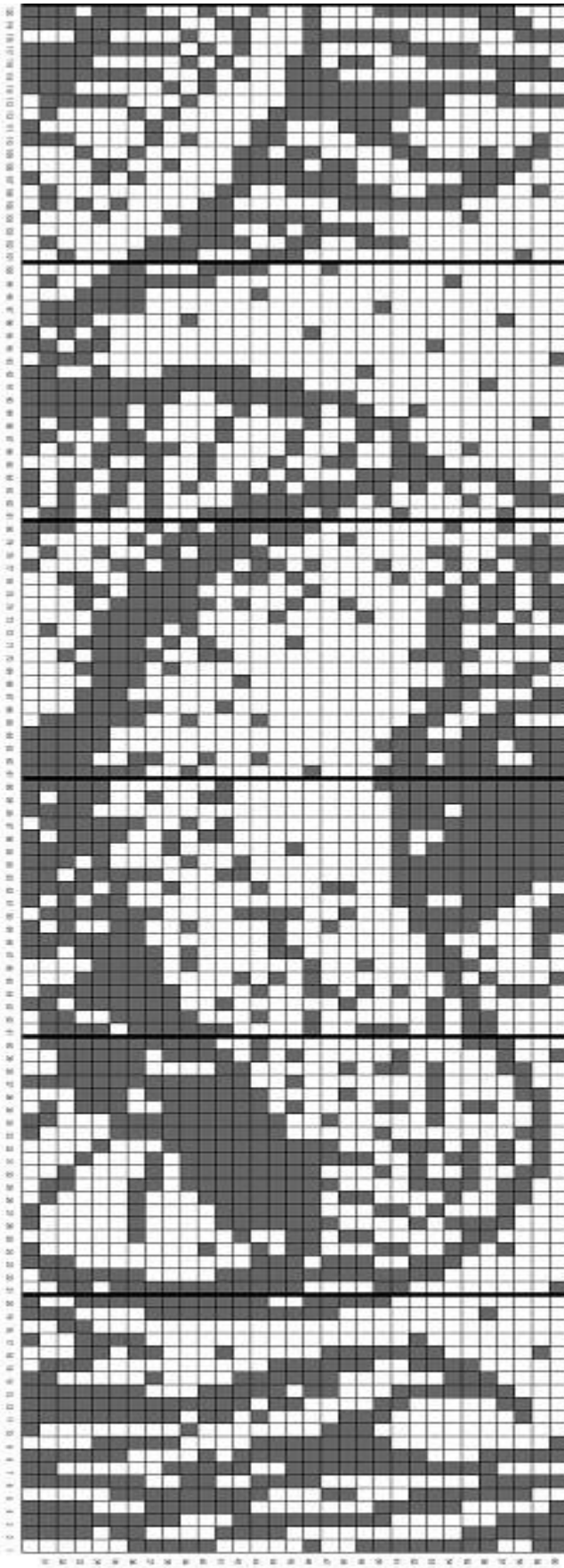
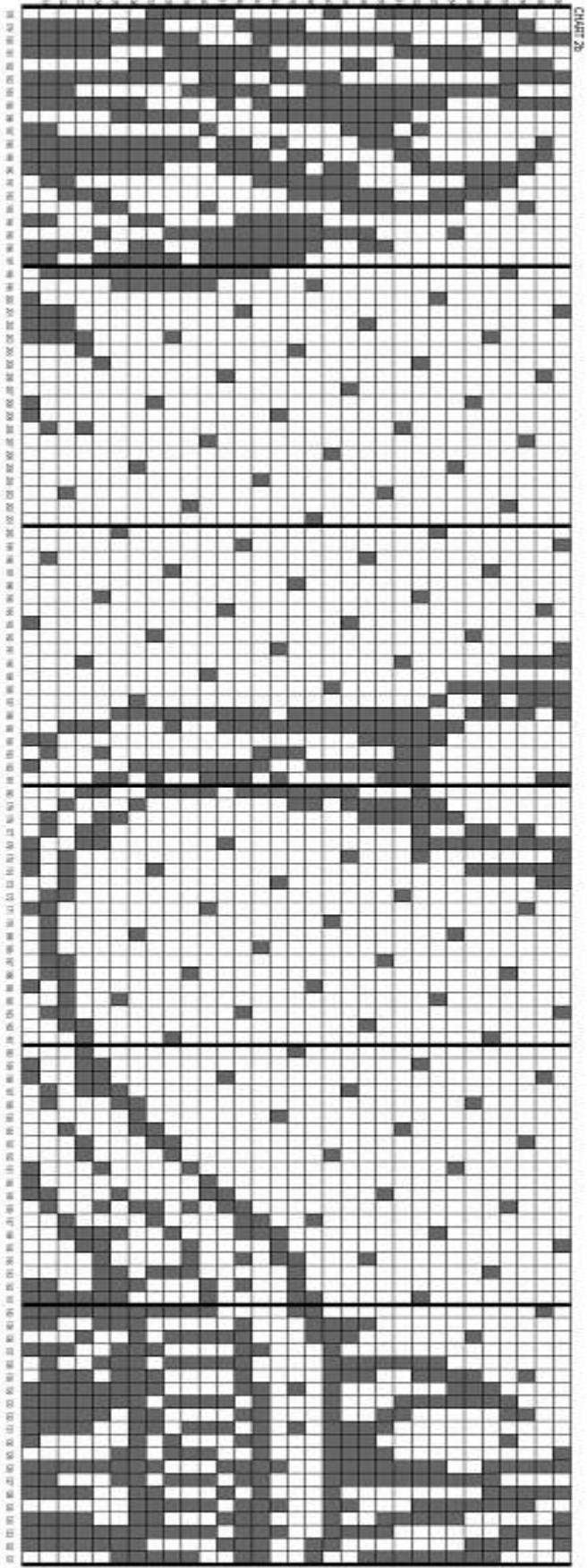


Chart 2





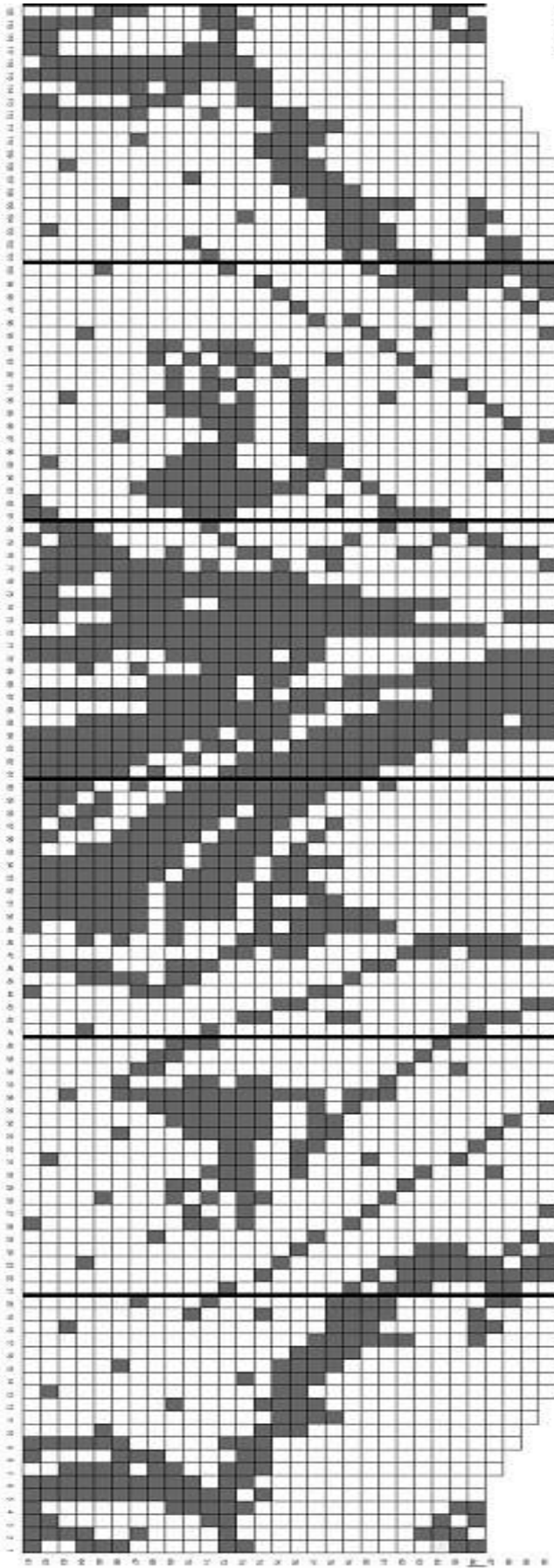


CHART 31

