



## Chevrolet Performance Air Induction Kit – Gen 6 Camaro V6 - 3.6L (LGX)

Thank you for choosing Chevrolet Performance as your high performance source. Chevrolet Performance is committed to providing proven, innovative performance technology that is truly.... more than just power. Chevrolet Performance parts are engineered, developed and tested to exceed your expectations for fit and function. Please refer to our catalog for the Chevrolet Performance Authorized Center nearest you or visit our website at [www.chevroletperformance.com](http://www.chevroletperformance.com).

It is not the intent of these specifications to replace the comprehensive and detailed service practices explained in the GM service manuals. For detailed installation instructions please look to the service manual for your specific vehicle.

GM service manuals are available from:  
Helm Incorporated  
PO Box 07130  
Detroit, MI 48207

For information about warranty coverage, please contact your local Chevrolet Performance parts dealer.

Observe all safety precautions and warnings in the service manuals when installing this kit in any vehicle. Wear eye protection and appropriate protective clothing. Support the vehicle securely with jack stands when working under or around it. Use only the proper tools. Exercise extreme caution when working with flammable, corrosive, and hazardous liquids and materials. Some procedures require special equipment and skills. If you do not have the appropriate training, expertise, and tools to perform any part of this conversion safely, this work should be done by a professional.

The information contained in this publication is presented without any warranty. All the risk for its use is entirely assumed by the user. Specific component design, mechanical procedures, and the qualifications of individual readers are beyond control of the publisher, and therefore the publisher disclaims all liability incurred in connection with the use of the information provided in this publication.

Chevrolet, Chevy, the Chevrolet Bow Tie Emblem, General Motors, and GM are all Registered Trademarks of the General Motors Corporation.

This kit includes a calibration update for the Engine Control Unit. Reprogramming is done with a Service Programming System at an Authorized GM Dealer. When reprogramming, the GM dealer needs to call the Techline Customer Support Center (TCSC). The TCSC will provide a Vehicle Configuration Index (VCI). The VCI is good for only one specific Vehicle Identification Number (VIN). Call TCSC (1-888-337-1010) to obtain a VCI number. You must have the vehicle's VIN that will be upgraded and the following Authorization Code.





**Tools needed:**

- T20 Torx Bit
- T30 Torx Bit
- 8mm socket (1/4" drive)
- Phillips Head Screw Driver
- Torque Wrench (capable of up to 80 lb-in)
- Wire snip pliers

**Required Supplies (not included in kit):**

- AC Delco Surface Primer GM P/N 12378462  
(OR)
- 3M 94 Primer

**Optional Supplies:**

When a lubricant is required as an assembly aid for installation of air induction system components, then only use the recommended part numbers. Use sparingly as required.

- Deionized water (GM P/N 15708574)  
(OR)
- 0.5% soap & water (GM P/N 9985406) - Also known as Duponol or FCR-400

**Eye Protection Warning**

**Warning:** Approved safety glasses and gloves should be worn when performing this procedure to reduce the chance of personal injury.

**Fastener & Hardware Caution**

**Caution:** Use the correct fasteners and clamps in the correct locations. Do not substitute or install hose clamps without load distributing insert (clamps with inserts are included in the kit). Installing clamps without inserts could cause damage to the system components. Replacement fasteners and clamps must be the correct part number for that application. Do not use paints, lubricants, or corrosion inhibitors on fasteners, or fastener joint surfaces, unless specified. These coatings affect fastener torque and joint clamping force and may damage the fastener. Use the correct tightening sequence and specifications when installing fasteners in order to avoid damage to parts and systems. When using fasteners that are threaded directly into plastic, use extreme care not to strip the mating plastic part(s). Use hand tools only, and do not use any kind of impact or power tools. Fastener should be hand tightened, fully seated, and not stripped.

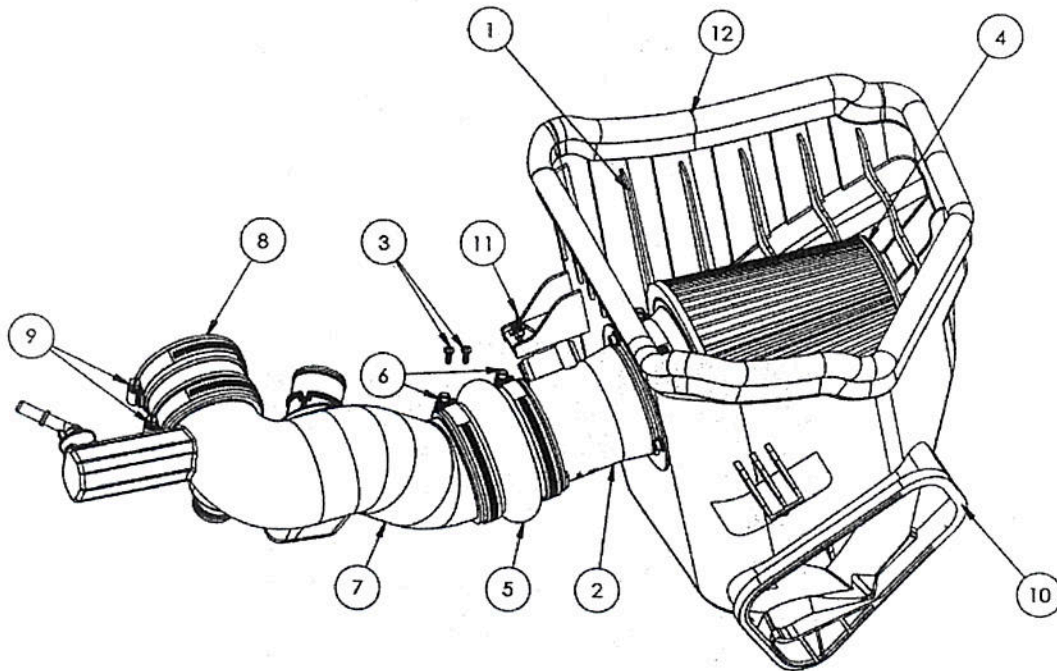
**Filter Caution**

**Caution:** Filter must be replaced if saturated with water. Only use Genuine Replacement Chevrolet Performance Air Filters.

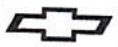


**Included Parts:**

1. Air Box (Qty. 1)
2. Mass Air Flow (MAF) Housing (Qty. 1)
3. Mass Air Flow (MAF) Sensor Screws (Qty. 2)
4. Air Filter Assembly (Qty. 1)
5. Air Cleaner Outlet Duct Coupler (Qty. 1)
6. Air Cleaner Outlet Duct Coupler #60 Hose Clamps (Qty. 2)
7. Air Cleaner Outlet Duct (Qty. 1)
8. Throttle Body Coupler (Qty. 1)
9. Throttle Body Coupler #52 Hose Clamps (Qty. 2)
10. Air Box Inlet Seal (Qty. 1)
11. Mass Air Flow (MAF) Wiring Harness Clip (Qty. 1)
12. Air Box Hood Seal (Qty. 1)
13. Chevrolet Performance Emblem (Qty. 1) (Not Pictured)



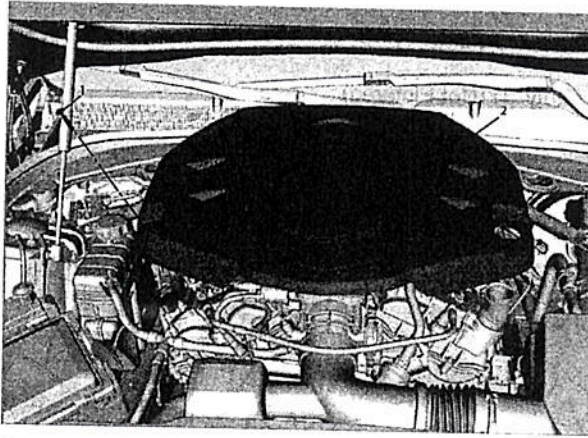
**Warning:** Verify parts are free of debris and foreign objects prior to installation. Failure to do so could result in engine damage.



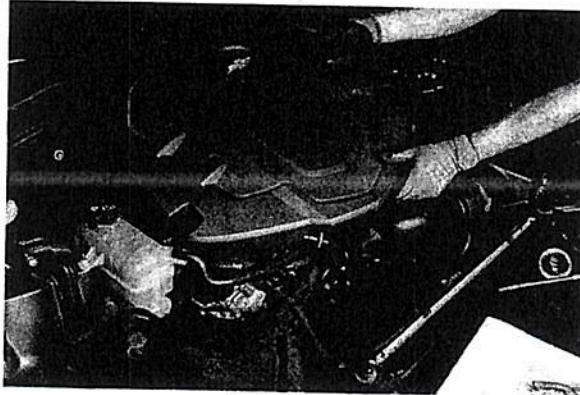
## Production Air Intake System Removal

**Warning: Underhood systems can be very hot!** In order to avoid being burned, do not service the vehicle while it is still hot. Service the vehicle when it is cool.

- Remove Engine Oil Fill Cap.
- Remove Intake Manifold Cover Retainer Screw (1) from the passenger side front of Intake Manifold Cover (2) with T30 Torx bit.



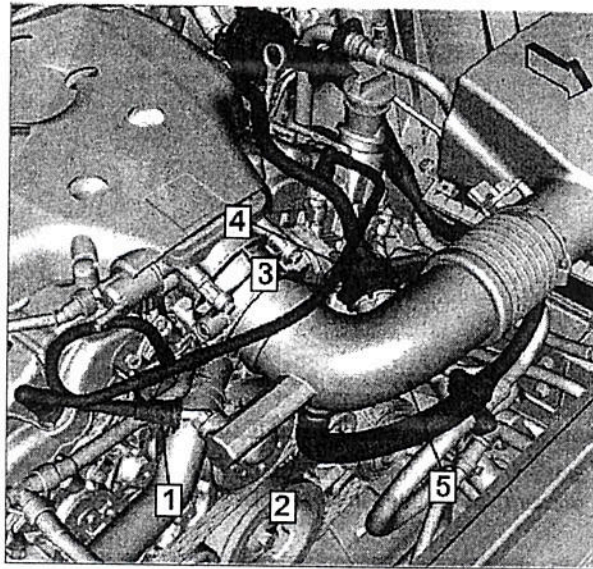
- Remove Intake Manifold Cover.



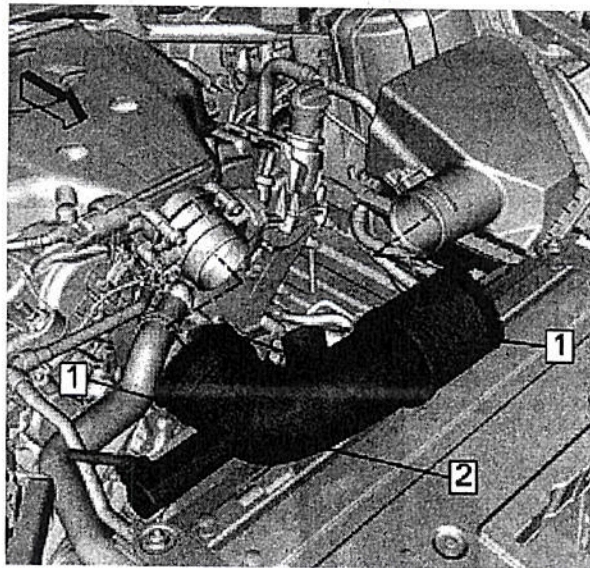
- Reinstall Engine Oil Fill Cap.
- Unplug Mass Air Flow (MAF) Sensor Electrical Connector.
- Pull MAF Sensor Wire Retainer Clip from Air Cleaner Assembly Wire Clip Mount.



- Loosen clamp (3) (8 mm) and remove Positive Crankcase Ventilation (PCV) Breather Hose (4) on driver's side of Air Cleaner Outlet Duct (5) and remove from duct. Unclip PCV breather line on passenger side of Air Cleaner Outlet Duct (1). Unclip and remove Air Cleaner Resonator Tube from bottom of Air Cleaner Outlet Duct by depressing plastic tabs and pulling downward (2).

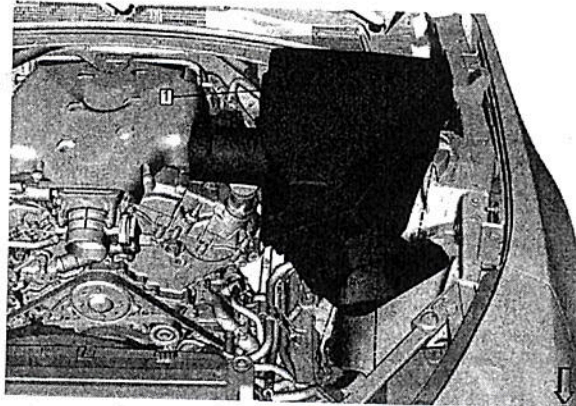


- Loosen Throttle Body & Air Cleaner Outlet Duct hose clamps (8mm) (1).
- Remove Air Cleaner Outlet Duct (2) from engine bay.



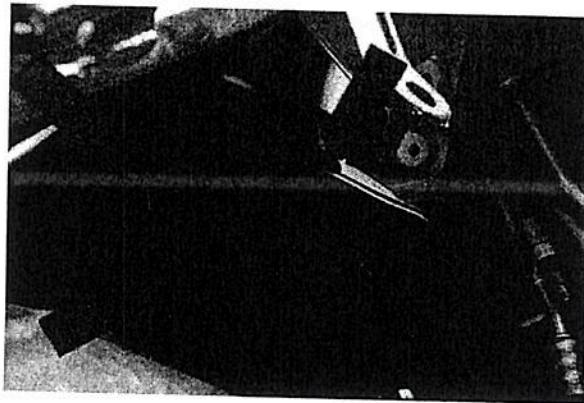


- Remove Air Cleaner Assembly (1) from engine bay (box supported in 3 rubber grommets). **Caution:** Rubber grommets on bottom of air box may pop out during removal. Be careful not to lose them as they will be used with the performance air induction system air box.

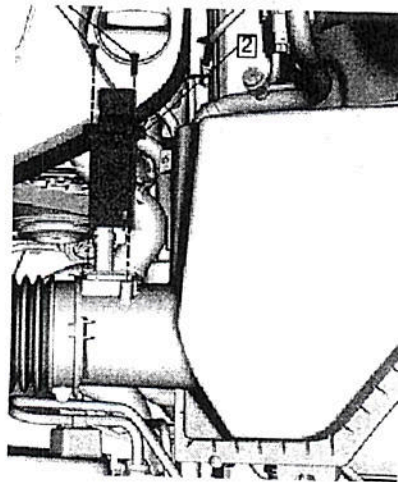


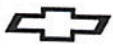
### **Chevrolet Performance Air Induction Kit Install**

- Thoroughly clean Air Box Assembly Inlet Mating Duct Surface (vehicle side rubber duct behind driver's side headlight) with recommended surface primer (Not included in kit). AC Delco Surface Primer GM P/N 12378462 (OR) 3M 94 Primer. Allow time to dry.

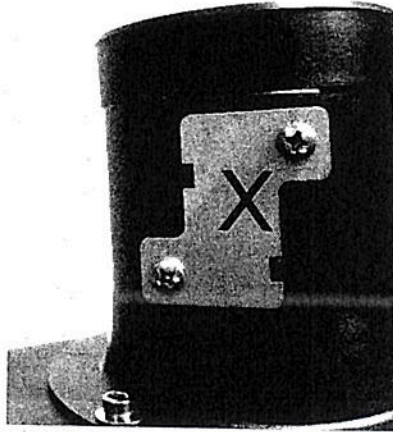


- Remove MAF Sensor from production Air Cleaner Assembly by loosening MAF screws (2 - T20 screws). Ensure that the MAF Sensor Sealing Gasket stays on MAF Sensor Body to be installed into Performance Air Induction System MAF Housing.

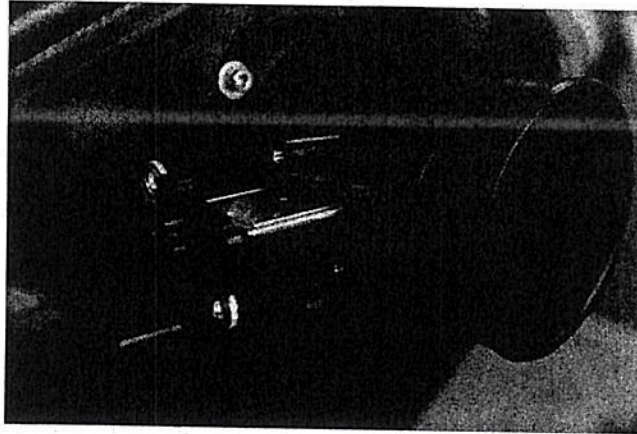




- Remove MAF Cover by removing the MAF Screws from the Performance Air Box MAF Housing. Throw away cover. Screws will be used in the next step to install the MAF Sensor.

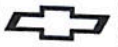


- Install MAF Sensor into Performance Air Box MAF Housing. Mount MAF sensor into MAF Housing using two supplied Phillips head screws. Torque to 1.5 Nm. **Warning:** Do not reuse the production Mass Air Flow Sensor screws. Use of production screws will result in damage to the threads of the Mass Air Flow Sensor Mounting Boss.

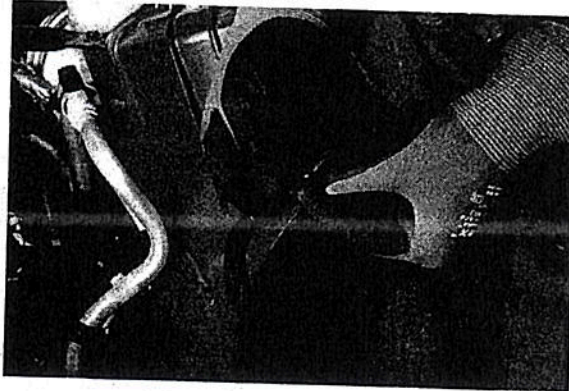


- Install Performance Air Filter Assembly onto Performance Air Filter Adapter on MAF Housing inside of Performance Air Box. Ensure locating tab inside of filter is properly aligned in notch on MAF Housing Adapter. Ensure filter is properly seated on MAF Housing Adapter before tightening. Make sure the filter clamp is properly positioned on filter neck and tighten clamp to torque (20 lb-in).

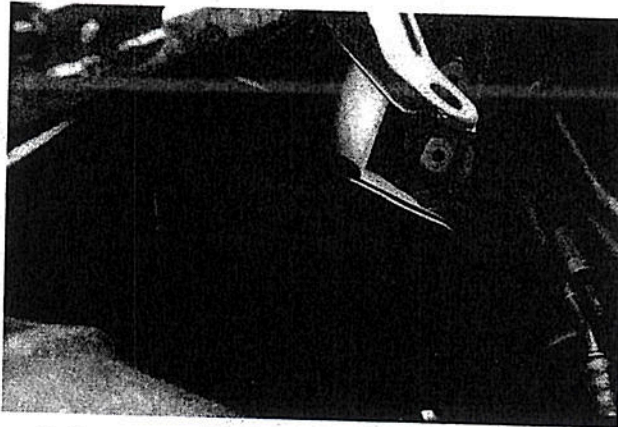




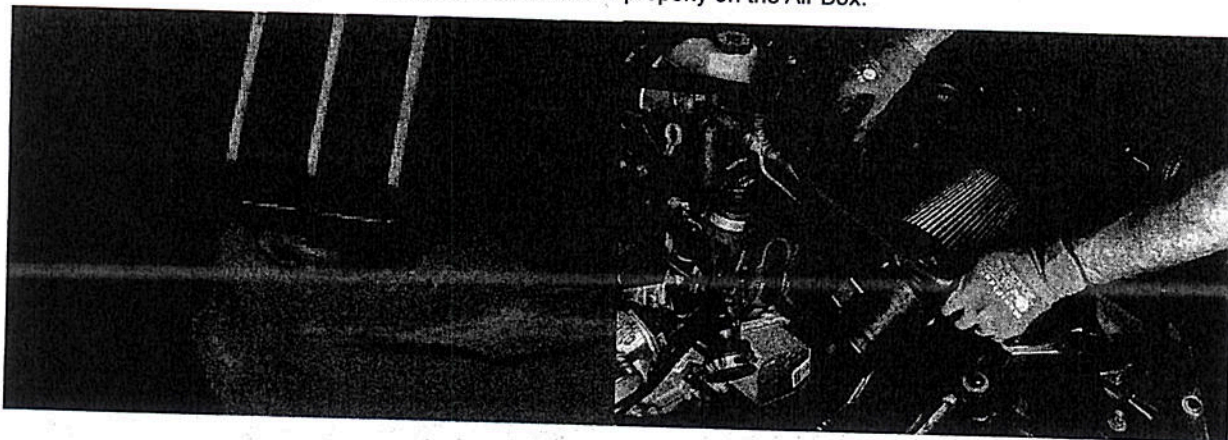
- Remove inside foam support piece from Air Box Inlet Gasket. Peel off adhesive protective backing from Air Box Inlet Gasket.



- Adhere Air Box Inlet Gasket to mating surface on rubber Air Box Assembly Inlet Mating Duct Surface behind driver's side headlight on vehicle. **Caution:** Be careful not to overstretch or bunch inlet gasket beyond the rubber inlet duct flat surface. Doing so could result improper sealing of the air box inlet.



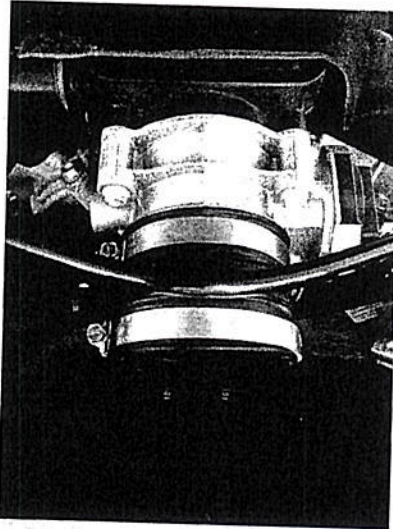
- Ensure rubber grommets from Production Air Cleaner Assembly are properly seated in vehicle mounting points. Seat Performance Air Box assembly into mounting grommets while ensuring Air Box Inlet Gasket seals well with the Air Box Inlet Flange. Check that the Air Box Hood Seal is seated properly on the Air Box.



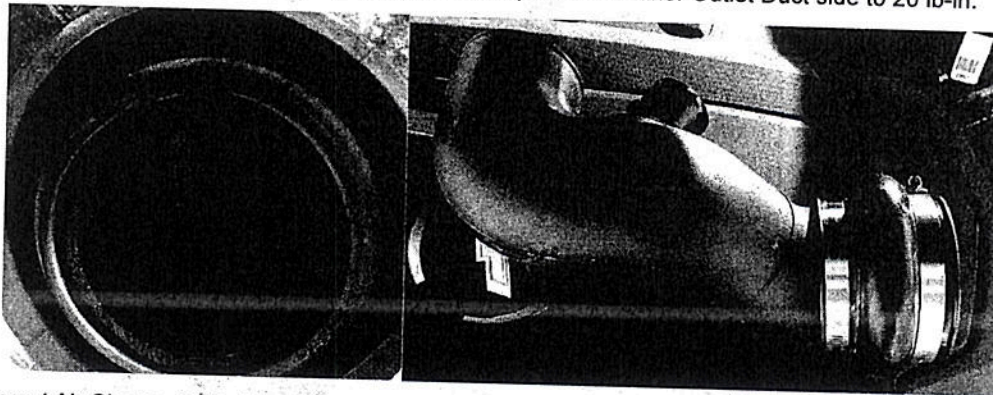




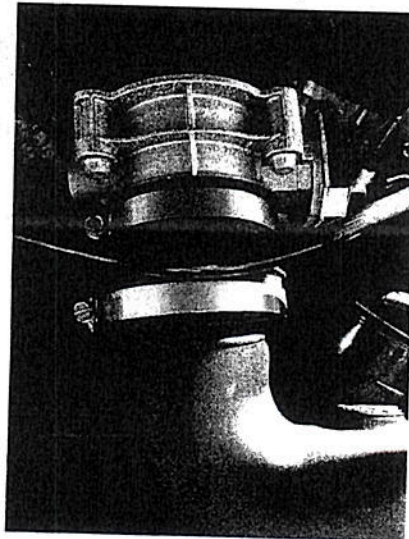
- Install supplied Throttle Body Coupler and two #52 Hose Clamps onto Throttle Body (8 mm). Tighten clamp on Throttle Body side of coupler to torque (20 lb-in). Leave the other clamp loose.



- Install Air Cleaner Outlet Duct Coupler and two #60 Hose Clamps onto Air Clean Outlet Duct (8mm) and ensure that the duct is flush with the inner lip on the coupler. Tighten clamp on Air Cleaner Outlet Duct side to 20 lb-in.

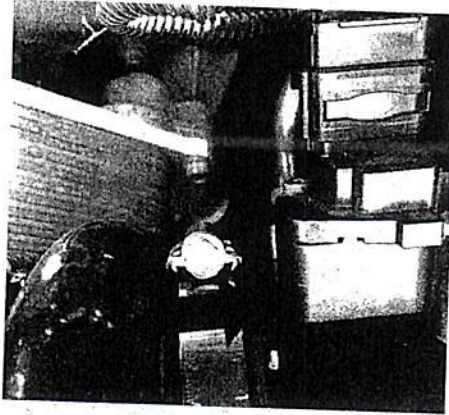


- Loosely insert Air Cleaner Outlet Duct into Throttle Body Coupler.

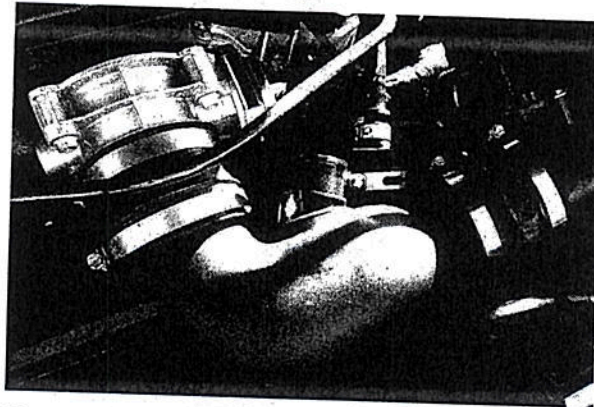




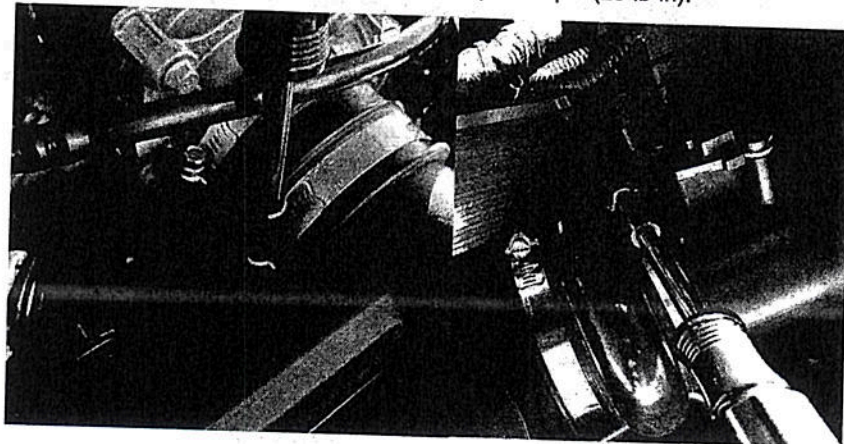
- Fit Air Cleaner Outlet Duct coupler onto MAF Tube Outlet and seat against stops on the MAF housing.



- Fully seat Air Cleaner Outlet Duct into Throttle Body Coupler.



- Tighten remaining #60 Hose Clamp & #52 Hose Clamp (8 mm) to torque (20 lb-in).

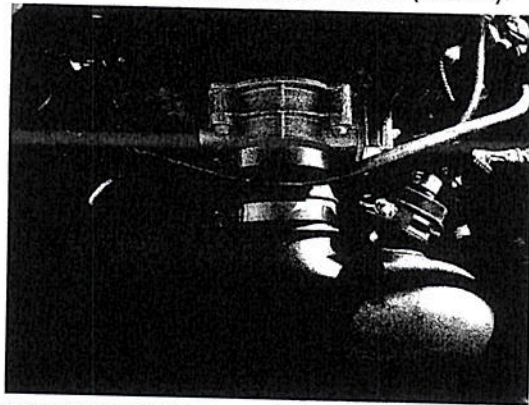




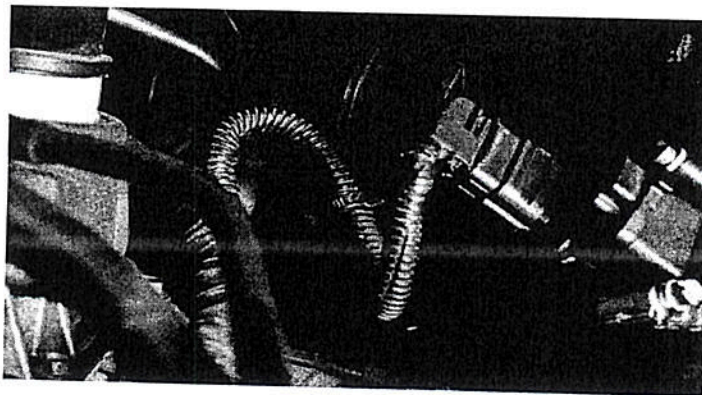
- If your car is equipped with the Heavy Duty Cooling and Brake Package (Regular Production Option (RPO): Y4Q (KC4 – External Engine Cooler)), ensure there is clearance between the External Engine Cooler (circled below) and the Air Cleaner Outlet Duct Coupler & Clamps. Adjust Air Induction System as necessary to ensure clearance (approximately ¼" minimum).



- Re-clip Air Cleaner Resonator Tube to bottom of the Air Cleaner Outlet Duct.
- Re-clip PCV breather hose to the passenger side Air Cleaner Outlet Duct. Re-seat and tighten PCV breather hose clamp (8 mm) to driver's side of Air Cleaner Outlet duct and torque to 4.0 Nm (35 lb-in).

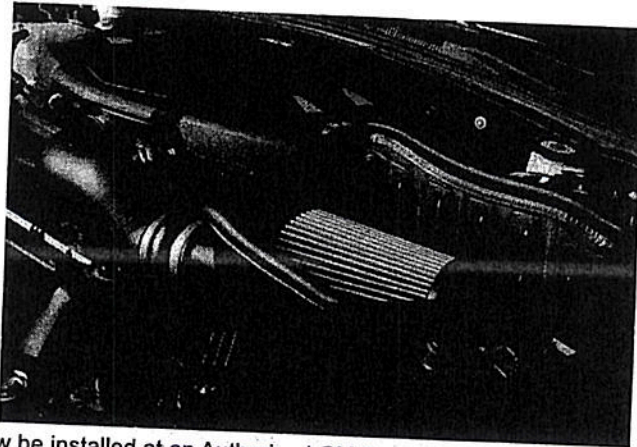


- Mark position of and then remove production MAF Sensor Wire Retaining Clip with Wire Snip Pliers. **Caution:** Ensure you do not cut or damage the MAF Sensor Wiring. Doing so could cause poor engine operation and drivability leading to Check Engine Light illumination.
- Attach Wire Harness Retaining Clip provided in the kit at the marked place on the MAF Wire Harness. Remove excess zip tie material with Wire Snip Pliers.
- Press MAF Sensor Wire Clip into Performance Air Box Wire Clip mounting provision. Plug in MAF Sensor Electrical Connector and push down positive lock once seated.





- Remove Engine Oil Fill Cap.
- Reinstall Intake Manifold Cover.
- Reinstall Intake Manifold Cover retainer screw (T30) and torque to 9.0 Nm (80 lb-in).
- Reinstall Engine Oil Fill Cap.



- Engine Calibration must now be installed at an Authorized GM Dealer.
- **Note:** This kit includes a calibration update for the Engine Control Unit. Reprogramming is done with a Service Programming System at an Authorized GM Dealer. When reprogramming, the GM dealer needs to call the Techline Customer Support Center (TCSC). The TCSC will provide a Vehicle Configuration Index (VCI). The VCI is good for only one specific Vehicle Identification Number (VIN). Call TCSC (1-888-337-1010) to obtain a VCI number. You must have the vehicle's VIN that will be upgraded and the Authorization Code provided at the bottom of the first page of this instruction sheet.