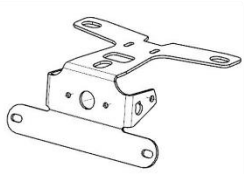


Renkin

INSTALLATION MANUAL BMW S1000R & S1000RR 2010-18 HIGH MOUNT

INCLUDED IN KIT:
TAIL TIDY BRACKET
CABLE TIE



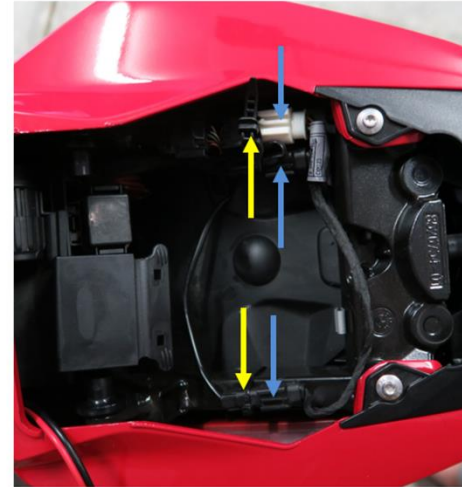
TOOLS REQUIRED:
T-25 SCREW
8 AND 10MM SOCKET



SECTION 1: REMOVE OEM FENDER

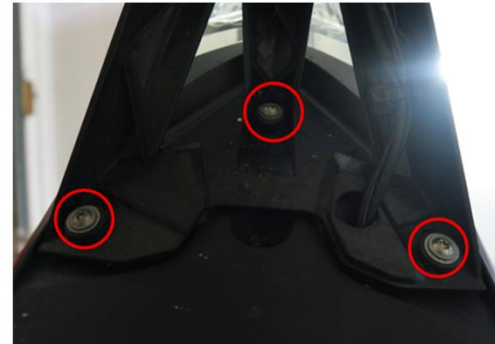
STEP 1: Remove seat (keyhole on top of pillion seat)

STEP 2: Unplug electrical connectors



- Remove two cable ties
- Unplug three electrical connectors for rear indicators and licence plate light

STEP 3: Remove OEM fender



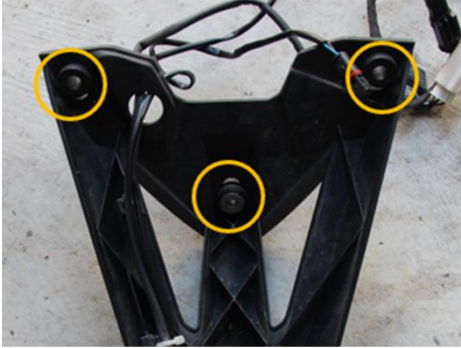
- 3 x T-25 Screws on underside of fender
- ⓘ Detach by pulling down and rearward
- ⚠ Set aside screws and washers for later use

SECTION 2: OEM FENDER DISASSEMBLY

IMPORTANT FOR 2014 MODEL OR OLDER:

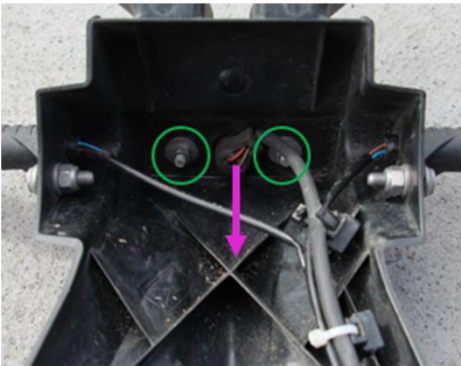
To remove the wiring harness without any cutting or splicing, the indicator connectors need to be unplugged from inside the indicator housing. Contact us for a video link. If your s1000 is 2015 or newer, disregard this note.

STEP 1: Remove rubber grommets



- 3 x Rubber grommets
Set aside for later use
- ⓘ If having difficulty apply a small amount of oil

STEP 2: Remove licence plate light and housing

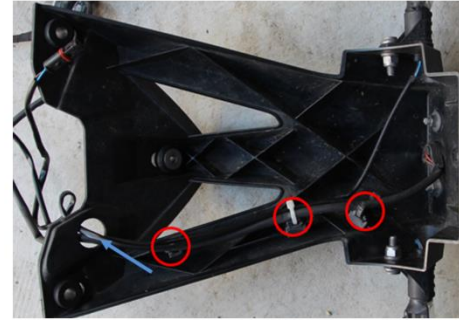


- 2 x 8mm nuts
- Pull globe rearward to detach



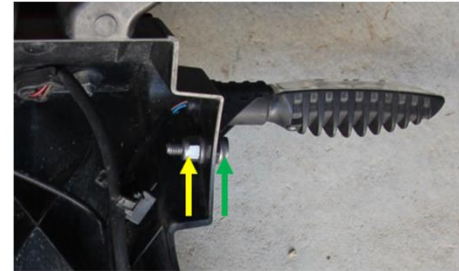
2

STEP 3: Remove licence plate light cable



- Cut three cable ties to free loom
- Feed licence plate light globe through hole to free cable. White plug on other end will not fit through hole

STEP 4: Remove Indicators



- 8mm nut
- Pull globe rearward to detach



3

SECTION 3: RENKEN TAIL TIDY ASSEMBLY

STEP 1: Fit rubber grommets



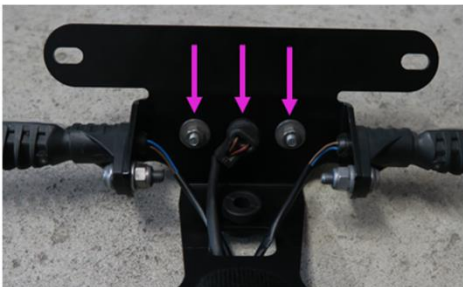
- 3 x Rubber grommets set aside from Section 2 Step 1
- ❗ If having difficulty apply a small amount of oil

STEP 2: Fit Indicators



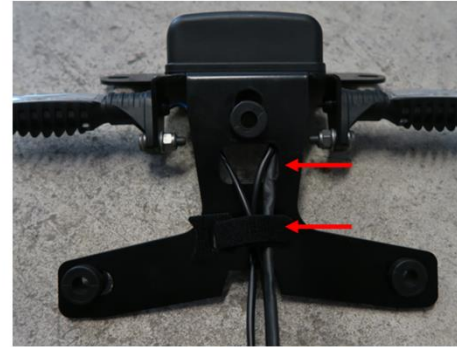
- Use hardware retained from Section 2 Step 4

STEP 3: Fit licence plate light housing and globe



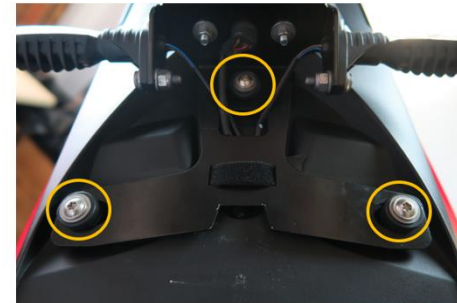
- Use hardware retained from Section 2 Step 2

STEP 4: Route cables



- Route through cutout and provided cable tie

STEP 5: Fit tail tidy to bike



- Use T-25 screws and washers set aside in Section 1 Step 3

STEP 6: Reattach electrical connectors

STEP 7: Fit licence plate

STEP 8: Reinstall pillion seat

INSTALLATION COMPLETE!