



BEIRUT . DUBAI . GENEVA . HONG KONG . LONDON . MONTREAL . NEW YORK . PARIS . SINGAPORE . SYDNEY . WASHINGTON DC

Lebanese International Finance Executives is a global network of Lebanese professionals working together towards a brighter future.

Beginning with finance, a discipline anchored in our history, our vision is to **create a shared platform** that transcends borders and affiliations, encouraging all Lebanese around the world to **support each other, nurture** the upcoming generations, drive positive change and **promote** cross border equity for our nation.

LIFE is a not-for-profit apolitical, membership organisation, founded in 2009 and headquartered in the UK. Its charity arm, LIFE Generation, is registered in the UK, US (501c3), France, Switzerland, Australia, and Lebanon. LIFE Generation, supports education, job creation and humanitarian efforts in Lebanon.

OUR PILLARS

CONNECT

- Establish stronger bonds between active Lebanese professionals around the world and build the network

NURTURE

- Help the Lebanese next generation succeed through scholarships, mentoring, and placements

PROMOTE

- Act as the bridge between LIFE and Lebanon's public and private sectors, channeling LIFE's expertise towards the development of the Lebanese economy, by advocating sound economic policy, supporting job creation and entrepreneurship in Lebanon, and channelling resources towards developmental and relief projects in Lebanon

BOARD MEMBERS

FIRAS ABI-NASSIF
CO-FOUNDER AND MANAGING PARTNER
TELEIOS CAPITAL PARTNERS
ZURICH

KHALIL BARRAGE
MANAGING DIRECTOR
THE INVUS GROUP
NEW YORK

RINDALA BEYDOUN
MANAGING PARTNER
BONELLIEREDE MIDDLE EAST
BEIRUT

MOUHAMMED CHOUKEIR
CEO
KLEINWORT HAMBROS
LONDON

PATRICK GEORGE
HEAD OF GLOBAL MARKETS,
EUROPE AND NORTH AMERICA
HSBC
LONDON

JEAN-MARC JABRE
FOUNDING PARTNER
CAPITAL D
LONDON

WISSAM KAIROUZ
MD, LEVERAGED AND ACQUISITION FINANCE
MORGAN STANLEY
NEW YORK

FRANCOIS KAYAT
MANAGING DIRECTOR
LAZARD
PARIS

ANNA KHAZEN
EUROPEAN HEAD
BLACKROCK PRIVATE CAPITAL MARKETS
LONDON

MAY NASRALLAH - CHAIR OF THE BOARD
FOUNDER AND EXECUTIVE CHAIRMAN
DENOVO CORPORATE ADVISORS
DUBAI

PAUL RAPHAEL
EXECUTIVE VICE CHAIRMAN
UBS
ZÜRICH/LONDON

OMAR SLIM
SENIOR PORTFOLIO MANAGER
PINEBRIDGE INVESTMENTS
SINGAPORE

WAHBE A. TAMARI
CHAIRMAN OF THE BOARD
ARAB BANK (SWITZERLAND) LTD
GENEVA

SASHA VAN DE WATER
MANAGING PARTNER
KEYHAVEN CAPITAL PARTNERS
LONDON

WALID ZEIN
FOUNDER AND MANAGING
PARTNER - VALORIS CAPITAL
DUBAI



OUR ADVISORY BOARD

SAMIR ASSAF

CHIEF EXECUTIVE OFFICER
HSBC GLOBAL BANKING & MARKETS

THOMAS J. BARRACK, JR.

EXECUTIVE CHAIRMAN AND FOUNDER
COLONY CAPITAL

WALID CHAMMAH

FORMER CO-PRESIDENT
MORGAN STANLEY
PARTNER
AUGMENTA CAPITAL

RAYMOND DEBBANE

PRESIDENT AND CHIEF EXECUTIVE OFFICER
THE INVUS GROUP

MAROUN EDDE

CHIEF EXECUTIVE OFFICER
MUREX

GILBERT GHOSTINE

CHIEF EXECUTIVE OFFICER
FIRMENICH

PHILIPPE JABRE

FOUNDER AND CHIEF INVESTMENT OFFICER
JABRE CAPITAL PARTNERS S.A.

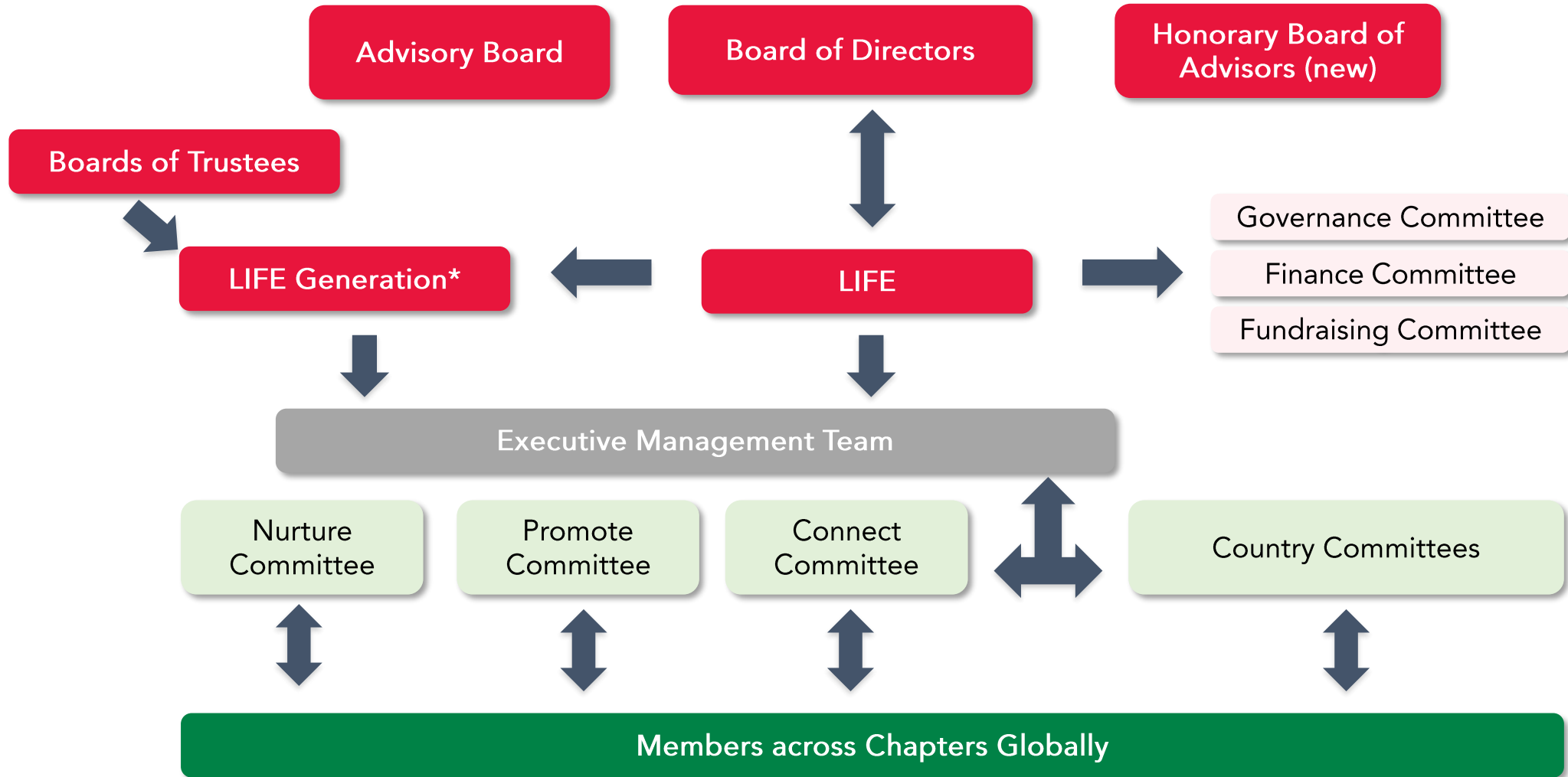
CHARIF SOUKI

AJAX HOLDINGS

TONY TAMER

FOUNDER AND CO-CHIEF EXECUTIVE OFFICER
H.I.G. CAPITAL

OUR GOVERNANCE



*LIFE Generation is the charity arm of LIFE supporting the Nurture programme (Scholarship) – charity registered in the UK, USA, Australia, France, Lebanon and Switzerland

OUR FINANCIALS

in GBP	2019	2018	2017
INCOME			
Membersip fees	580,773	505,349	488,433
Donations for Membership Organisation	153,272	633,778	193,396
Donations for Nurture Programmes	299,926	242,847	179,327
Donations from Fundraising event	846,015	28,427	570,463
Other income	59,870	79,401	44,517
TOTAL INCOME	1,939,856	1,489,801	1,476,136
EXPENDITURE			
Charitable expenses	598,905	433,882	398,585
Staff costs	580,922	540,668	457,820
Other operational costs	282,806	205,587	207,988
TOTAL EXPENDITURES	1,462,632	1,180,137	1,064,393
Surplus / (deficit) for the year	477,224	309,665	411,743

MILESTONES

Network

815+ Members

11 chapters: Beirut, Dubai, Geneva, Hong Kong, London, Montreal, New York, Paris, Singapore, Sydney, Washington DC

Peer-to-peer mentoring 100+ members participating each year

Events 100+ annual global events

Support entrepreneurship and sustainable job creation in Lebanon

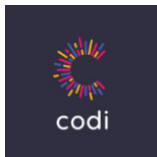
460+ job applications received each year

70+ jobs posted per year

30+ internships or jobs secured per year

100+ introductions to Social Enterprises

\$100K grant to Social Enterprises per year



Scholarships

\$5.8M raised since inception

350+ scholarships awarded since inception for student to study in Lebanon and in international universities

\$1M Emergency Education Fund committed in 2020 to support students in serious financial needs studying in Lebanon

Emergency relief fund- phases 1 and 2

\$640K raised to support local NGOs

- Apolitical, non sectarian, with strong governance and transparency
- National reach
- 100,000 lives impacted
- Direct relief (food, medication and medical treatment)



BEIRUT EMERGENCY FUND 2020



THE SITUATION

On August 4, 2020, Lebanon witnessed the worst single disaster with the horrifically massive explosion in the Port of Beirut that claimed more than 150 lives, wounded more than 6000 and caused total material and infrastructural damage in many areas of Beirut.

At a time when Lebanon was already bleeding economically and financially, it is now literally bleeding with human loss, destruction and desolation.

LIFE is joining forces with other Lebanese diaspora organisations to form a unified humanitarian platform, Beirut Emergency Fund 2020 with the aim to amplify coordination, outreach and impact in these catastrophic times. These organisations include, in addition to LIFE, LebNet, the Social and Economic Action for Lebanon (Seal), the Kuwait American Foundation, and Jamhour Alumni.

THE BENEFICIARIES

Needs:

1. Shelter
2. Rehabilitation
3. Medication
4. Food
5. Environment

Eligibility Criteria:

- Registered organisations
- Apolitical
- Non-sectarian
- Active in the mentioned fields

The Process

NGO's **selected** after **due diligence** performed by 3QA, a third sector quality assurance social enterprise. **Proposals** will be reviewed with the help of organisations on the ground and selected based on a clear **needs assessment framework**. NGOs delivery will be **monitored** and **impact assessed** by 3QA and will be reported back to you.

Selected NGOs so far, and more to come



nusaned



WE NEED YOUR SUPPORT

In this deeply distressing time we want to continue to stand together in support and in solidarity with our fellow citizens and need your support.

Your donations are crucial in this disastrous situation.

Your donations can be tax deductible in the following jurisdictions:

- Australia
- Canada (In progress)
- France (In progress)
- Switzerland
- United Kingdom
- USA

THANK YOU

For any further information, please contact us
donate@lifelebanon.org

