

VENMAR

HELMETS®

2018 COLLECTION



BRANDS



SIMPSON

Simpson Performance Products was founded in 1959 by Bill Simpson. Its manufacturing facility is located in New Braunfels, Texas.

A line of Simpson helmets has been in production since 1979, the basic design was revised and renamed the Bandit. Our company played an important role in the development and improvement of the motorcycle version, the Venom, adding new features like the sun visor and obtaining both ECE and DOT safety certifications.

Thanks to Vemar, an iconic American product is finally available in Europe

VEMAR HELMETS

The origins of Vemar Helmets are in Italy, where in the early 80's it spins-off from a company already operating for over a decade as manufacturer of composite materials.

The company earned experience and product awareness on motorcycle helmets as OEM company during the early years.

In 40 years of experience more than 50 professional riders chose to race with Vemar Helmets, rewarded with 5 company awards and 36 championship victories.

70's

Company establishment by the will of Riccardo Simoni.

The name came up by the words Vetroresine Maremmane, which were determining clearly the working domain of the company (fiberglass) and the geographic area, the southern region of Tuscany, Italy (Maremma).

The composite materials were used for manufacturing storage systems for alimentary liquids, such as olive oil and wine.

80's & 90's

Establishment of the Vemar Helmets division.

The company grew up quickly and over the years it acquired experience thanks to the OEM production.

In 1992 Vemar Helmets established a new in-house laboratory to boost the R&D department.

A strong identity was defined and the product distribution spread soon from Italy to the rest of the world.

2000-2009

Vemar Helmets targets to be leader in design, innovation and technology

Besides to the production of Law Enforcement helmets, the company has been among the first to design and develop a flip-up helmet, and the first ever to introduce electronics in its products, such as Bluetooth communication systems.

A chrome painting and new composite blends of carbon, fiberglass, aramid fibers, titanium and Dyneema are tested, tuned up and used in production.

All these innovations and efforts for quality and improvement were awarded with international prizes and reviews.

2010-2017

Leading the innovation and focusing on any perspective of head protection, the company developed the Night Vision series, a helmet range with a high visibility and glowing exterior finishing, which in 2012 was elected best new product by Motor Cyclist (MOTY award) and editors' choice (NIFTY50).

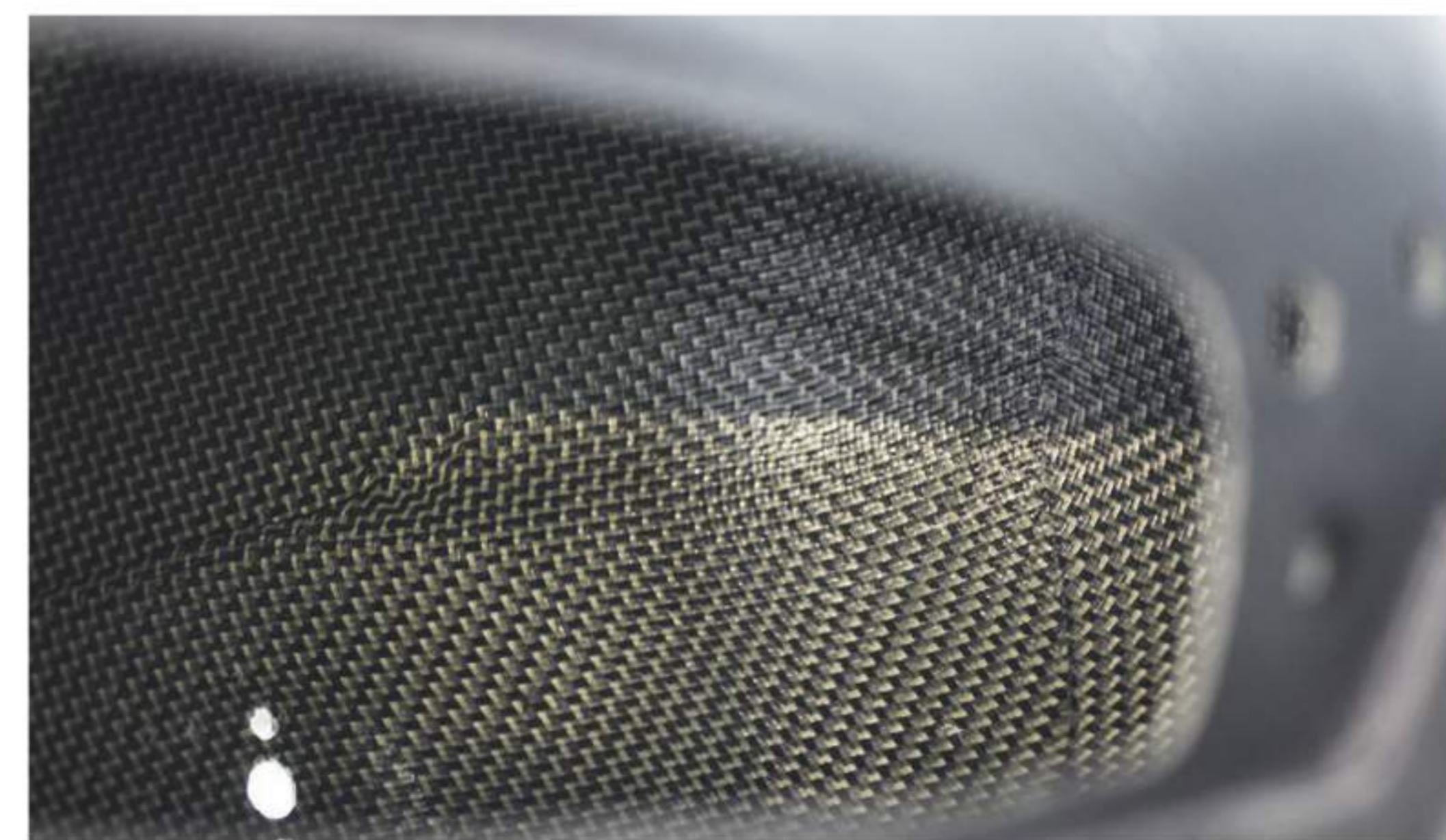
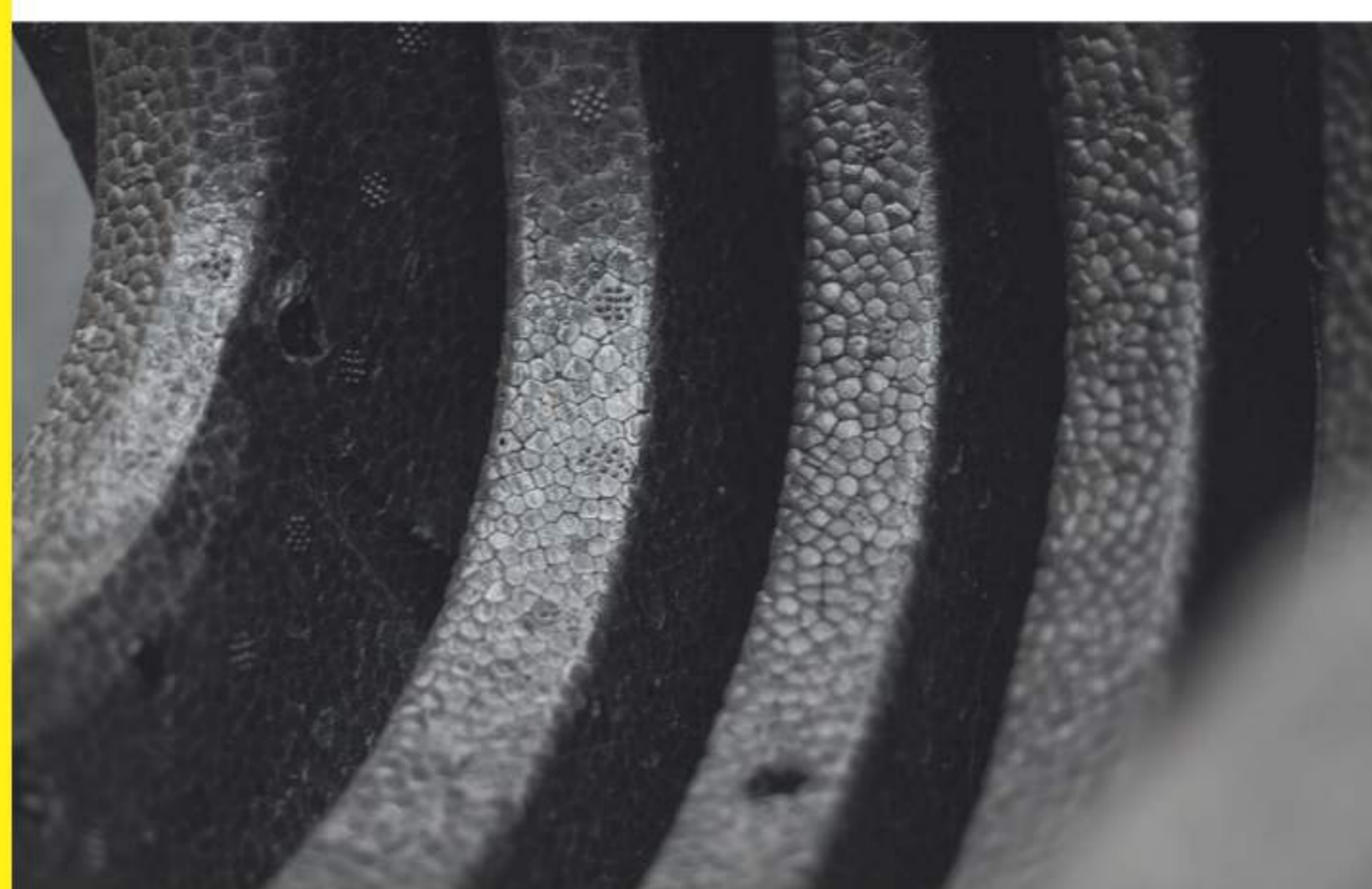
In 2016, through an operation of acquisition the brand Vemar Helmets joined the IHC group.



SUMMARY

TECHNOLOGY & FEATURES	4
SIMPSON	6
VENOM	8
VEMAR	10
RACING	12
HURRICANE	12
STREET	16
ZEPHIR	16
GHIBLI	18
TOURING	20
SHARKI	20
OFF ROAD	22
TAKU	22
KONA	24
CITY	26
FENG	26
BREEZE	28

TECHNOLOGY & FEATURES



above:
ventilation channels in the EPS
on the right:
fiber details



MAXX-3C

High-strength and lightweight shell construction in MAXX-3C, Multi-Axis Tricomposite compound (carbon / kevlar / fiberglass).



R-3P

Shell made of R-3P, reinforced terpolymers.



MULTIPLE SHELL SIZES

Helmet shell built in different sizes. This allows to save weight and reduce the exposed surface to the air resistance optimizing the smaller sizes.



PINLOCK® 100% MAXVISION® READY

Premium solution for a wide screen, fog-free vision. The extended coverage of the Pinlock® 100% MaxVision® lens reaches all edges of the visor and provides a larger fog-resistant surface. Its silicone seal creates a double wall system between the helmet visor and the Pinlock® lens itself, which is made of a special hydrophilic material that absorbs moisture and assures a completely fog-free vision.



PINLOCK® READY

The visor is compatible with Pinlock® lenses; its silicone

seal creates a double wall system between the helmet visor and the Pinlock® lens itself, which is made of a special hydrophilic material that absorbs moisture and assures a completely fog-free vision



PANORAMIC VISOR

Full visor for an ideal face covering and aerodynamic protection.



VIEWPORT IN CINESCOPE

Safety is not only defined by a protection factor of the helmet itself, but also by the time that the rider needs to predict a danger and react. Therefore Vemar Helmets developed an ultra-wide viewport on their helmets with no blind spots, assuring a maximum vertical and full peripheral field of view.



SCRATCH RESISTANT VISOR

Visor with scratch-resistant treatment.



VISOR LOCK

It allows secure locking of the visor even at high speed.



100% SUN VISOR

Internal sun visor with drop-down mechanism for

a full coverage of the entire visual field.



QUICK-CLICK SUN VISOR MOUNTING SYSTEM

The internal visor can be quickly replaced without using any tool.



VISOR WITH CONTROLLED ANTI-FOG AIR FLOW

The visor can stay 1mm open to let additional air flow in and boost demisting during conditions of extreme humidity



CHIN VENT WITH DIRECTIONABLE AIR FLOW

A built-in mechanism in the chin ventilation allows the direction of the airflow on the rider's mouth or on the visor's surface. It can be switched by a lever inside the chinbar.



VKS – VEMAR KLIMA SYSTEM

Ventilation system for exhausting hot air from the inside of the helmet. The fresh air taken in by the front and top ventilations blows the hot air through an inner channel system till it gets totally exhausted from the venting holes placed on the external rear area of the helmet.



REMOVABLE AND WASHABLE LINING

Fully detachable and washable comfort padding.



REMOVABLE AND WASHABLE CHEEK PADS

Detachable and washable cheek padding.



COMMUNICATION READY

Ready for easy installation of Bluetooth headsets.



CONVERTIBLE 2 IN 1

Extremely versatile model built by thinking at those wanting the safety features of a full-face helmet but with the possibility to move to the comfort of an open face. The easily removable protective chin bar can be replaced by plates for covering the lifting mechanisms, and a full visor completes the transformation of a flip-up helmet into a real open face.

Or the opposite: by a special kit it is possible to transform the full visor open face helmet into a real flip-up helmet with protective chin bar (see the Sharki).



DD-RING

Chinstrap with doubleD ring closing buckle.



MICROLOCK

Chinstrap with microlock closing buckle.



CHEEK PAD EMERGENCY RELEASE SYSTEM

Safety system allowing to remove the cheek pads in emergency situations.



ACTIVE NECK BRACE BALANCING

Bottom shape designed to actively balance neck brace safety devices.



QUICK-CLICK PEAK MOUNTING SYSTEM

Allows easy and quick removal of the external visor for fitting a peak in the same housings. The double configuration of the helmet allows to choose between a traditional comfort (visor + inner sun visor) and a more modern and dynamic look (peak + inner sun visor).



The background of the image features a complex, abstract pattern of wood grain. It consists of numerous overlapping, concentric, and slightly irregular lines that create a sense of depth and texture, resembling the grain of wood or a topographical map. The lines are primarily in shades of gray and black, with some white highlights, and they radiate from various points across the frame.

SIMPSON®

VENOM

The all-new Simpson Venom combines an aggressive street-fighter look with first class comfort and technical specs.

The original design has evolved to fit the needs of the modern rider. The shell reminds of the 70's unique Simpson design, but noise reduction and aerodynamics has been substantially improved.

The shell features Maxx-3C tricomposite technology and a lighter, full carbon version is available.

The EPS hosts the wide channels of the VKS venting system, which provides the right airflow at any adjustment.

The enlarged field of view provides a limitless vertical and peripheral vision; Pinlock® MaxVision® lenses are included in the box and the drop-down sun visor covers the whole field of view.

TECHNOLOGY & FEATURES



Carbon - MC
srp £449.99



Subdued - F901

srp £299.99



MATT Black - MS

srp £279.99



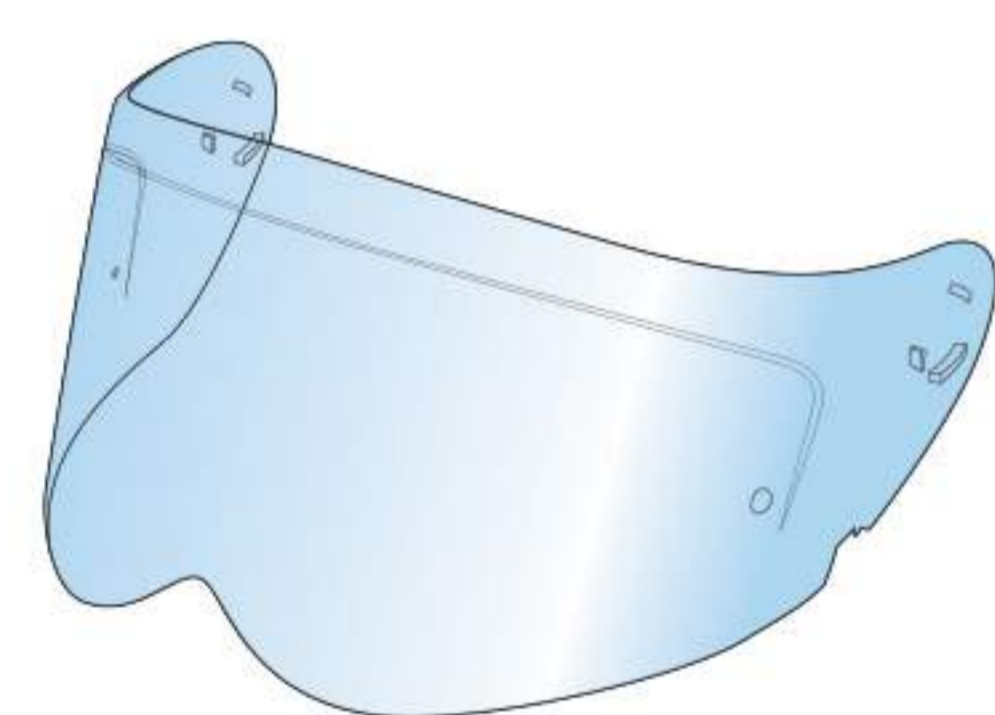
White - MA

srp £279.99

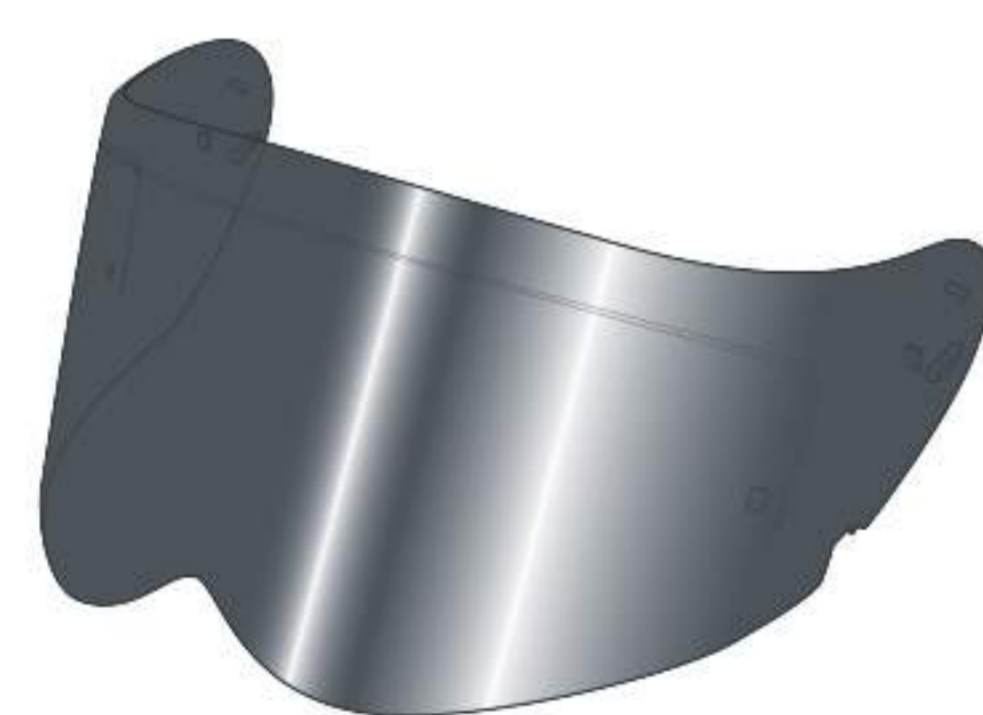


Black - MH

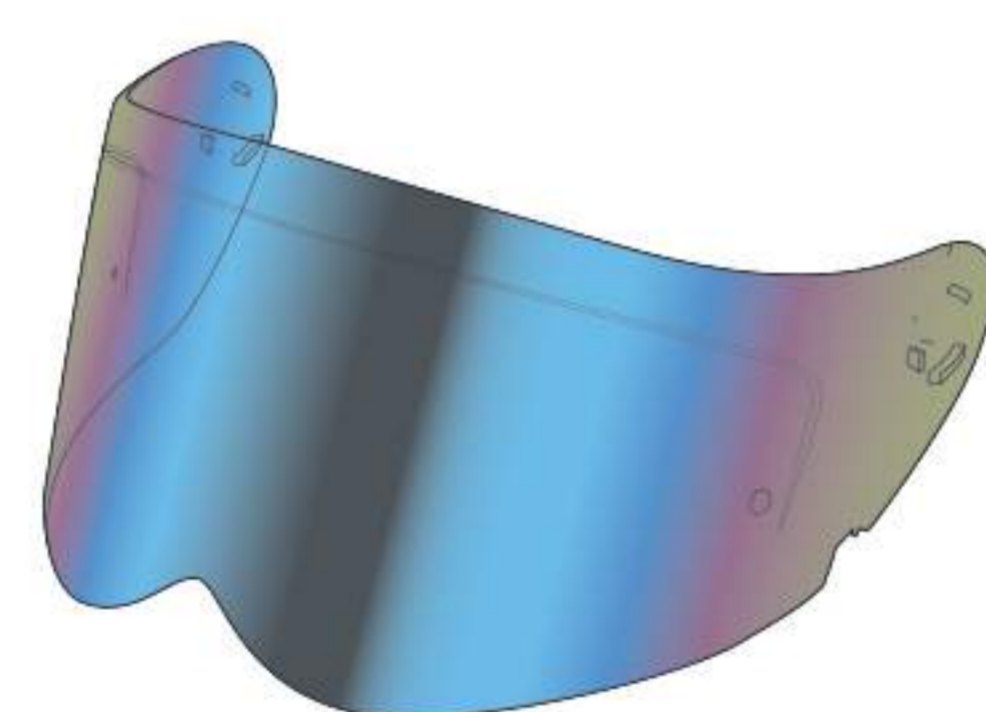
srp £279.99



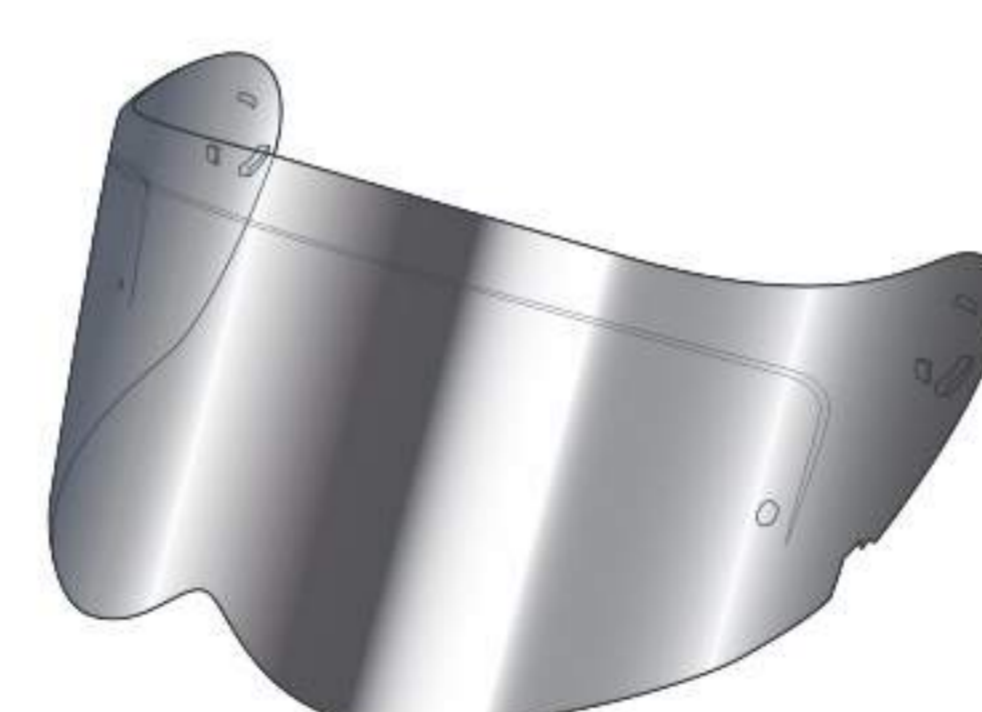
Clear visor



Dark tint visor



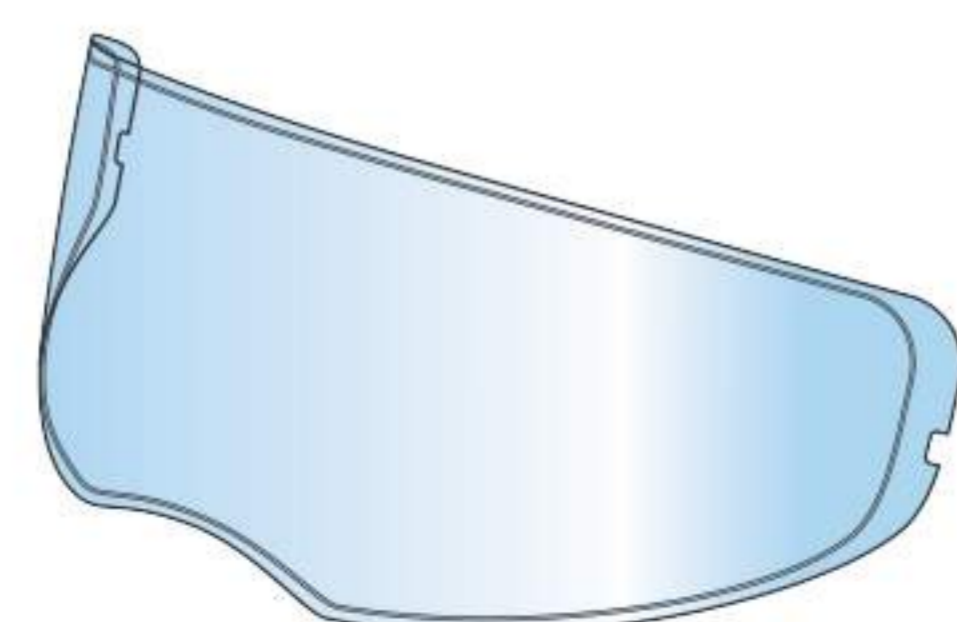
Rainbow visor



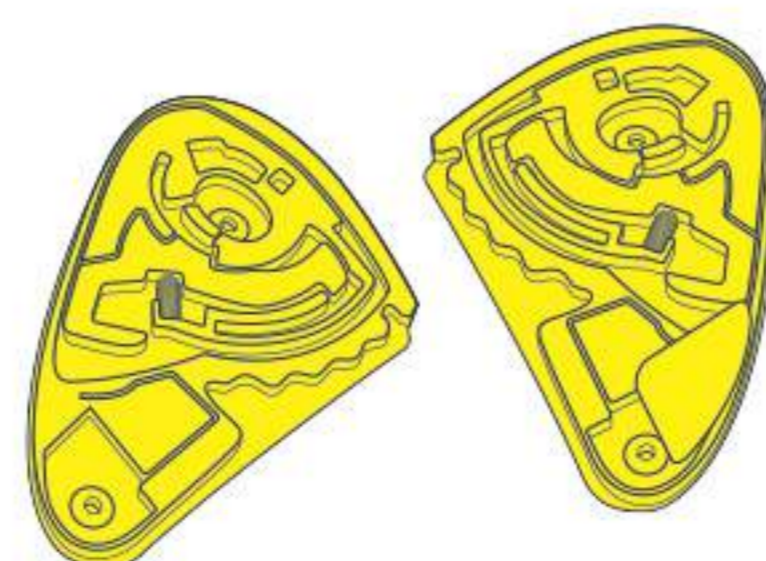
Mirror visor



Inner sun visor



Pinlock MaxVision



Visor fitting kit

ITEM	CODE
CLEAR VISOR	MP090445
DARK TINT VISOR	MP090447
RAINBOW VISOR	MP090448
MIRROR VISOR	MP090449
VISOR FITTING KIT	MP050081
INNER SUN VISOR	MP090410
PINLOCK MAX VISION	MP220959





HURRICANE

Vemar's interpretation of the racing helmet. The Hurricane features a tight fit, comfortably and evenly sustained around the head.

The ultralight shell takes advantage of Maxx-3C technology, its shape has been developed in the wind tunnel to ensure the lowest aerodynamic resistance, minimizing turbulence and buffeting. A curved rear bottom shape gives maximum freedom of movement when wearing dorsal protectors.

A limitless vertical and peripheral vision in any riding position is assured by an extra-large viewport, Pinlock® MaxVision® lenses are included in the box, the visor can be left few millimeters open or be locked on the closed position.

The chin air-intake, with an inner directable air flow, avoids moisture when directed on the visor, and the Vemar Klima System (VKS) exhausts hot air from the inside of the helmet.

This is the perfect helmet for track and performance riding.



TECHNOLOGY & FEATURES



Claw MATT Silver/Flu Yellow - H042

srp £249.99



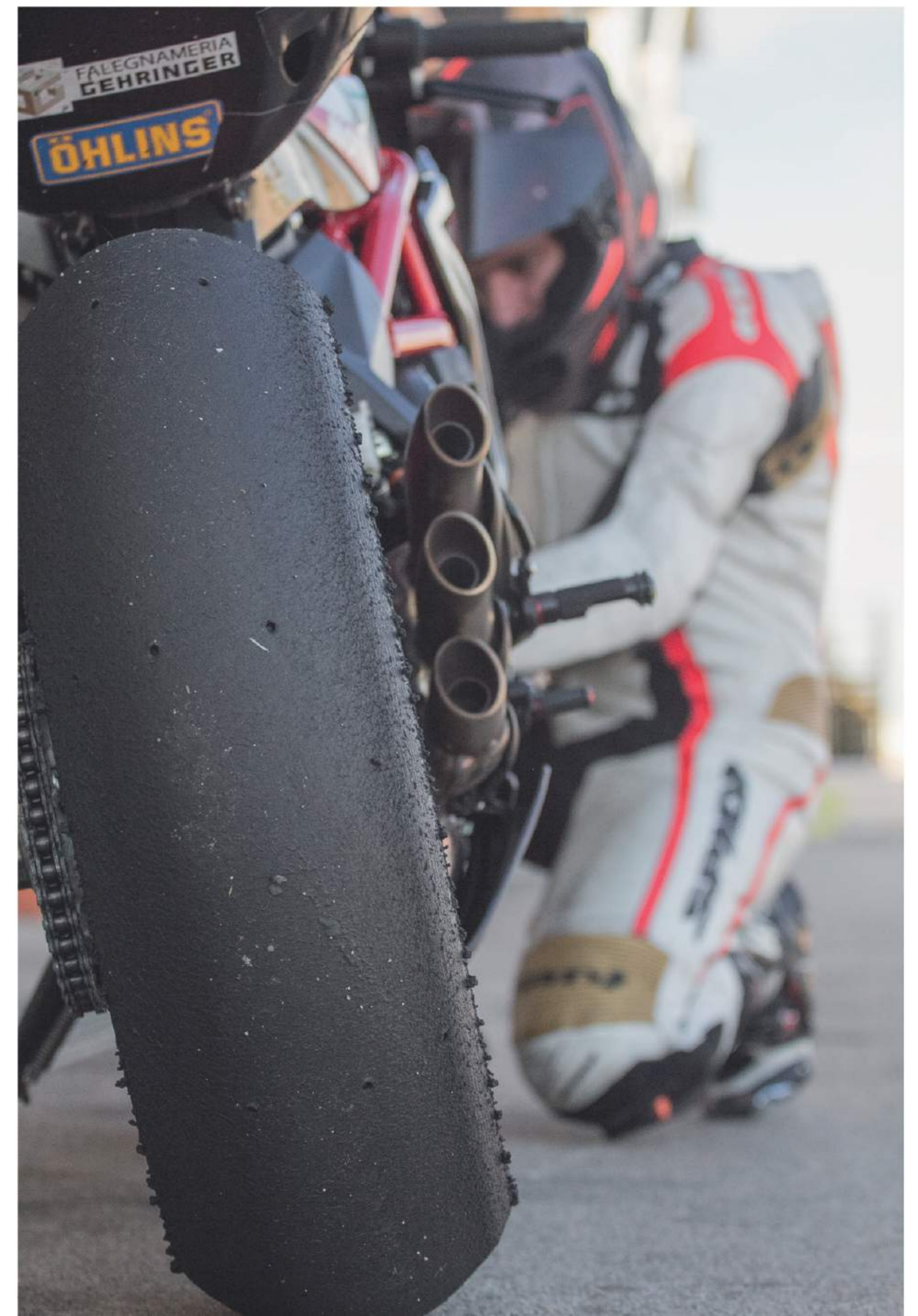
Claw MATT Dark Silver - H041

srp £249.99



MATT Black - H05

srp £229.99





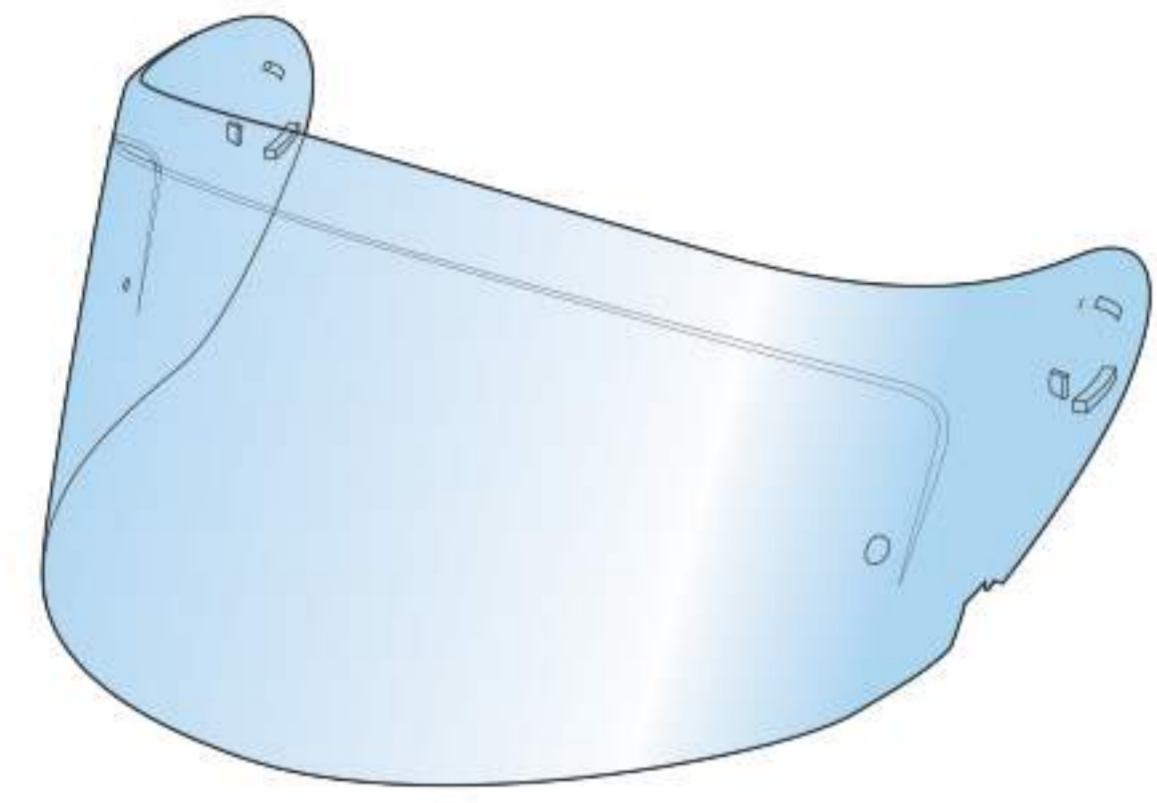
Laser MATT Bronze/Flu Orange - H038
srp £249.99



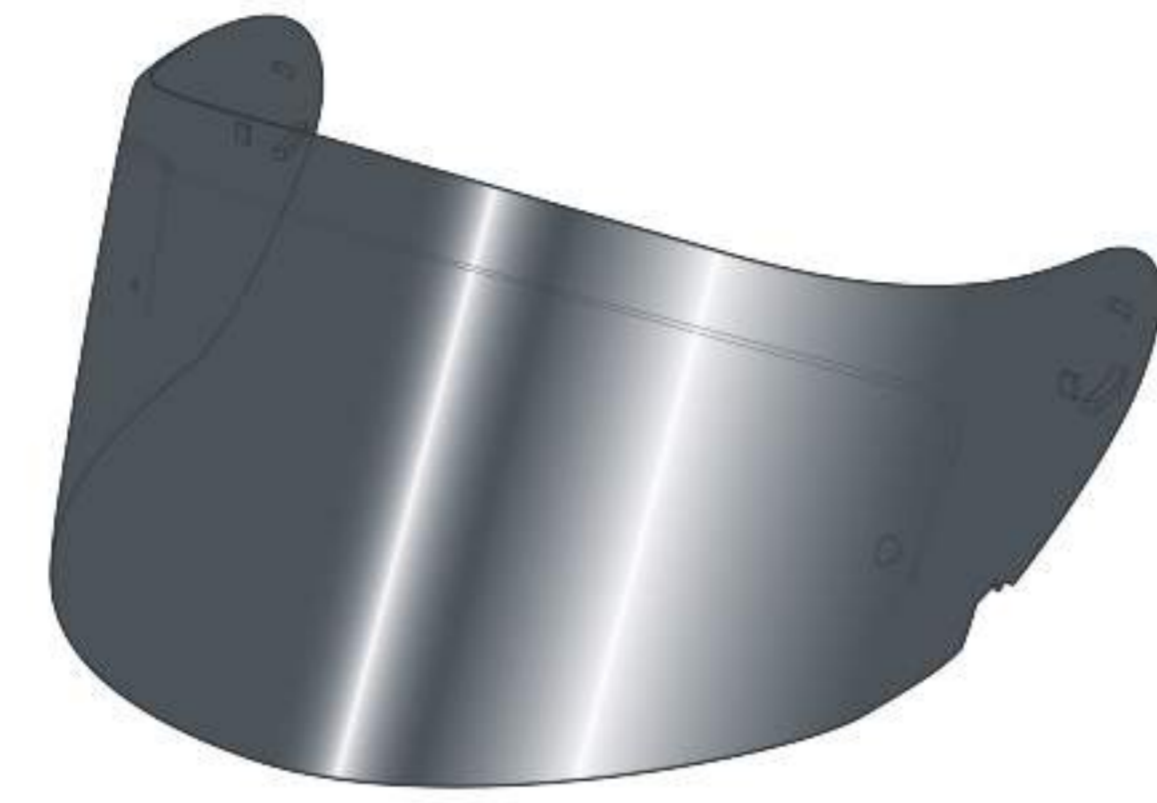
Laser Blue/Flu Yellow - H034
srp £249.99



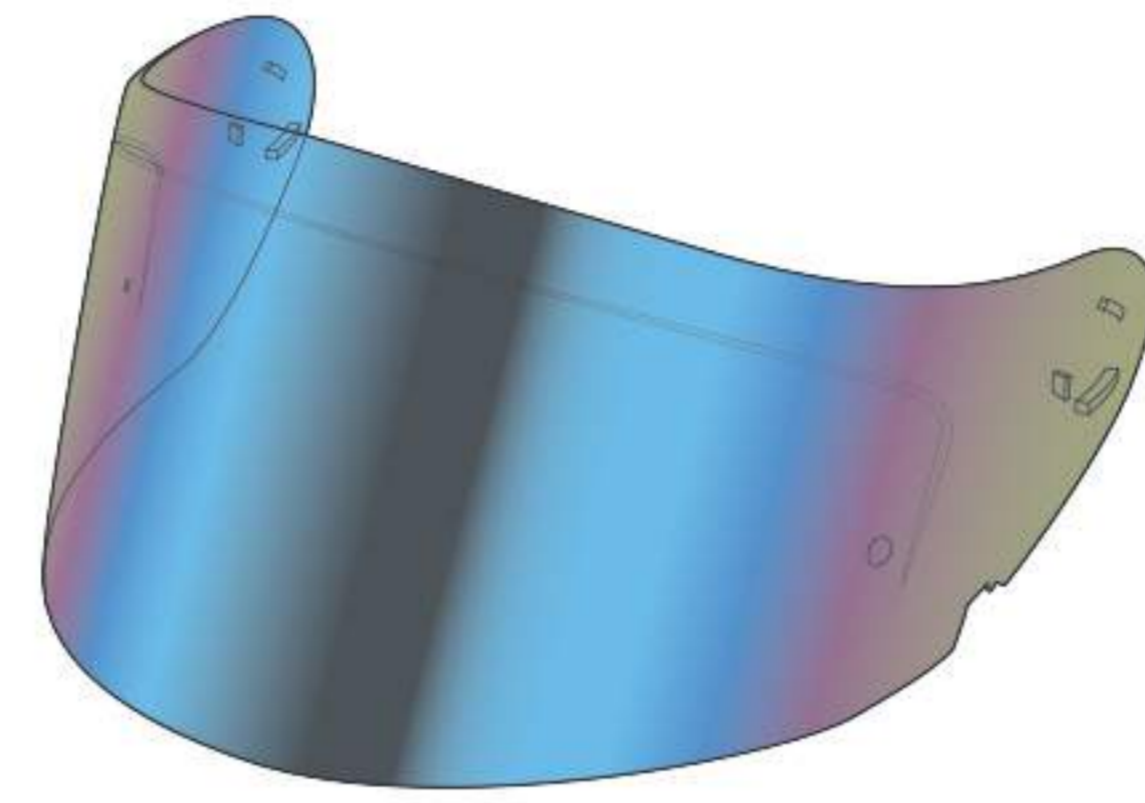
Laser MATT Silver/Flu Yellow - H037
srp £249.99



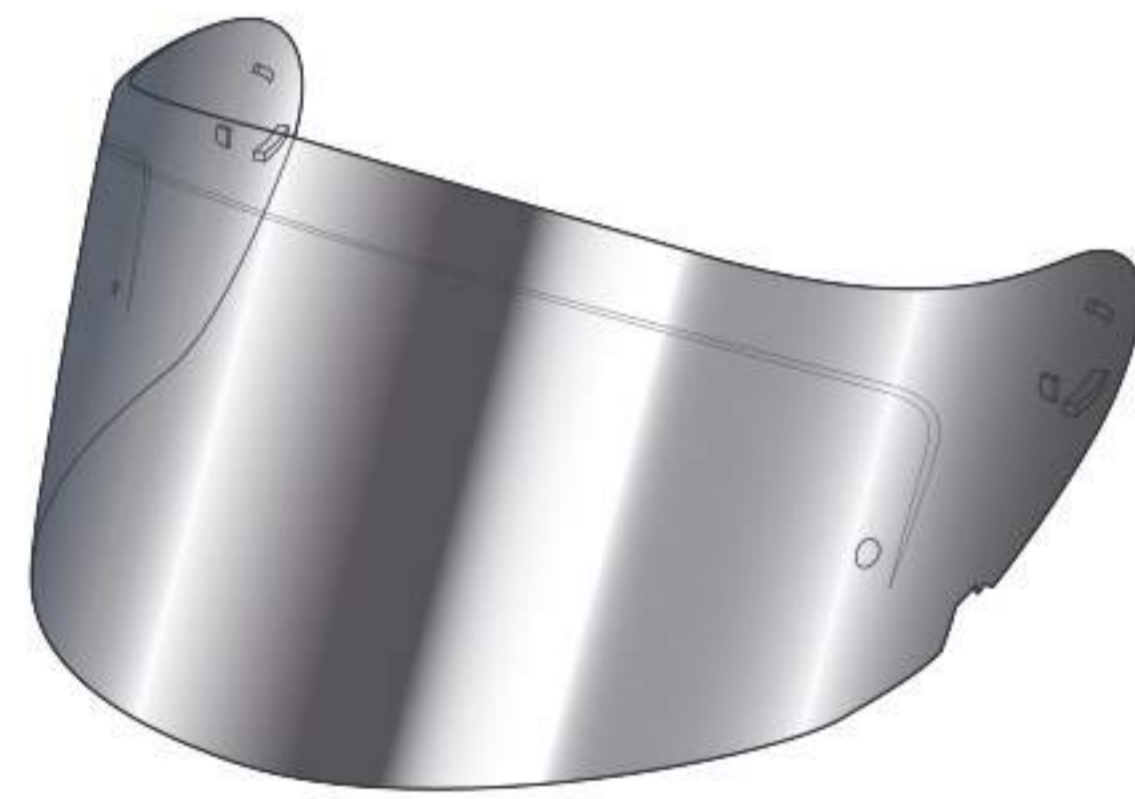
Clear visor



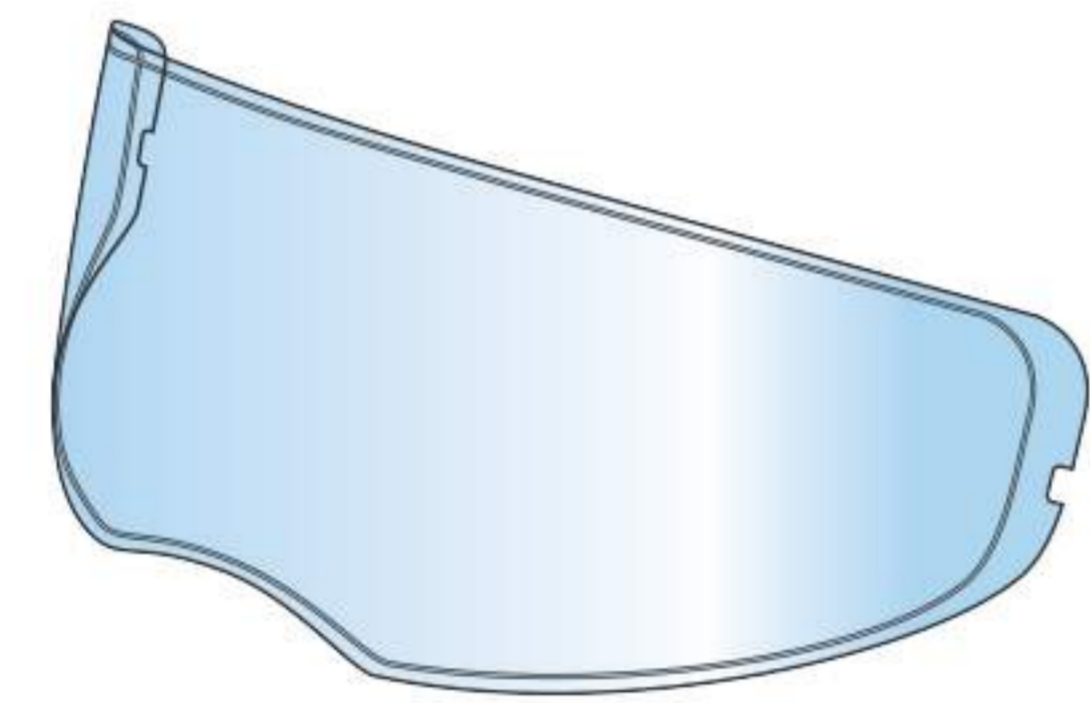
Dark tint visor



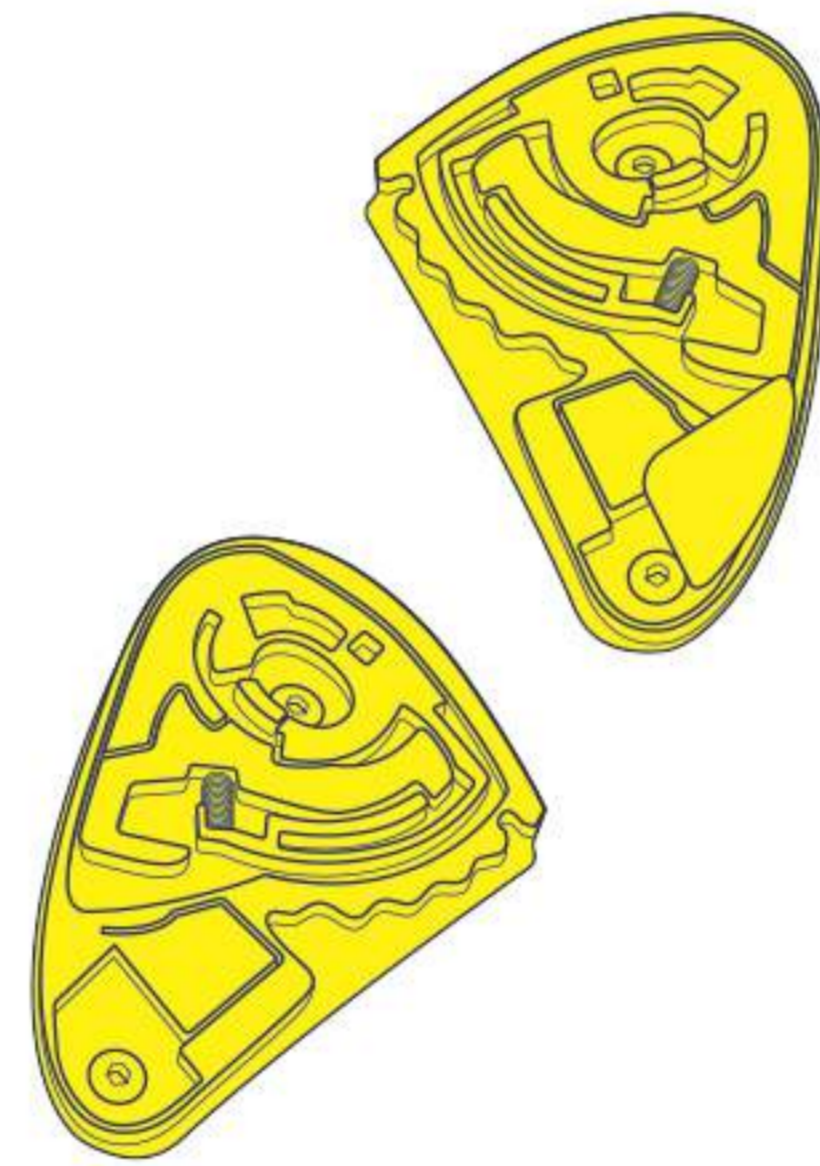
Rainbow visor



Mirror visor



Pinlock MaxVision



Visor fitting kit

ITEM	CODE
CLEAR VISOR	MP090421
DARK VISOR	MP090437
RAINBOW VISOR	MP090423
MIRROR VISOR	MP090424
VISOR FITTING KIT	MP050081
PINLOCK MAX VISION	MP220945

ZEPHIR

The touring motorcycle helmet by Vemar, designed with high functionality in mind, featuring a R-3P terpolymers shell.

The Vemar Klima System (VKS) ventilation system assures maximum air-flow and hot air exhausting without compromising the noise level and aerodynamics.

Enlarged field of view for a limitless vertical and peripheral vision and the visor can fit Pinlock® MaxVision® lenses. Particularly comfortable fitting, drop-down sun visor covering completely the visual field and, further to the inner housings, an handy slot on the helmet shell allows to fit any type of communication system.



TECHNOLOGY & FEATURES



Lunar Flu Yellow - Z024

srp £149.99

Lunar Deep Blue/White/Red - Z023

srp £149.99



Lunar MATT Silver - Z026
srp £149.99



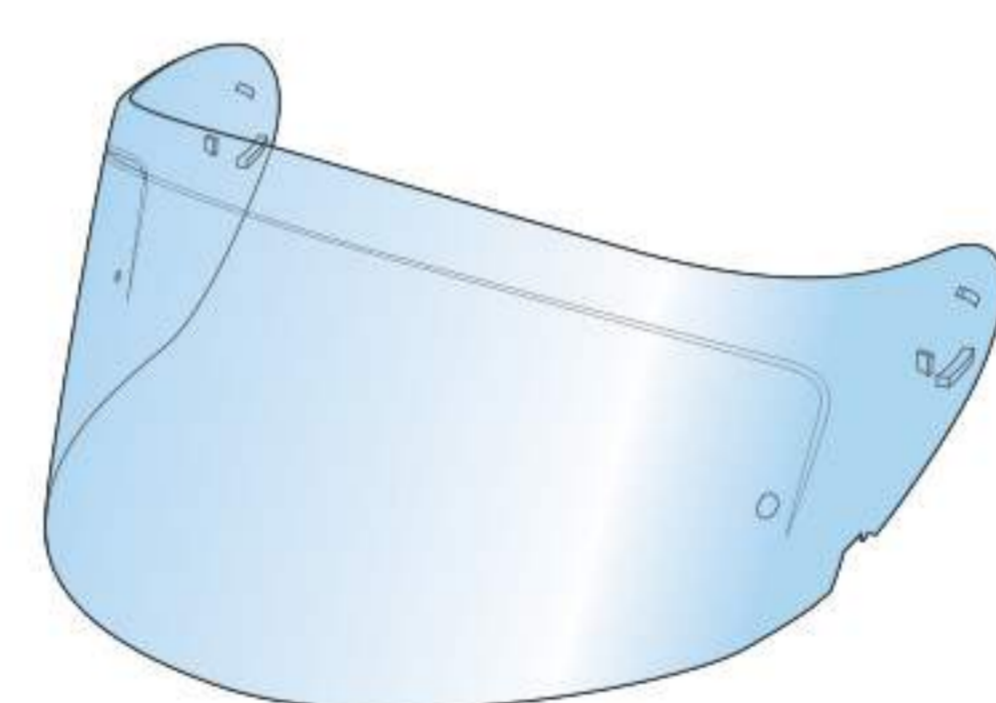
Lunar MATT Orange/Silver - Z027
srp £149.99



Lunar Red/White/Orange/Blue - Z025
srp £149.99



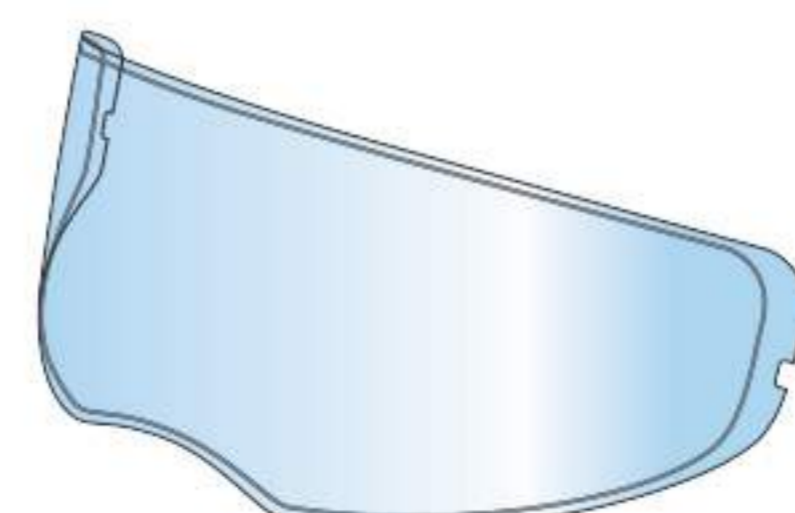
MATT Black - Z0S
srp £129.99



Clear visor



Inner sun visor



Pinlock MaxVision



Visor fitting kit

ITEM	CODE
CLEAR VISOR	MP090425
VISOR FITTING KIT	MP050083
INNER SUN VISOR	MP090419
PINLOCK MAX VISION	MP220946

GHIBLI

A street motorcycle helmet, designed for any road use. Particularly comfortable fitting, the EPS hosts the wide channels of the VKS venting system, which provides the right airflow at any adjustment and exhausts the hot air from inside of the helmet.

The shell, featuring the R-3P terpolymers composition, and a longer rear wing, reduces the aerodynamic resistance.

The visor can fit Pinlock® lenses and inner housings allows to mount the headset for any type of communication system.



Base Flu Yellow - G020
srp £119.99



TECHNOLOGY & FEATURES



Base MATT Silver - G019
srp £119.99



Base MATT Flu Orange - G021
srp £119.99



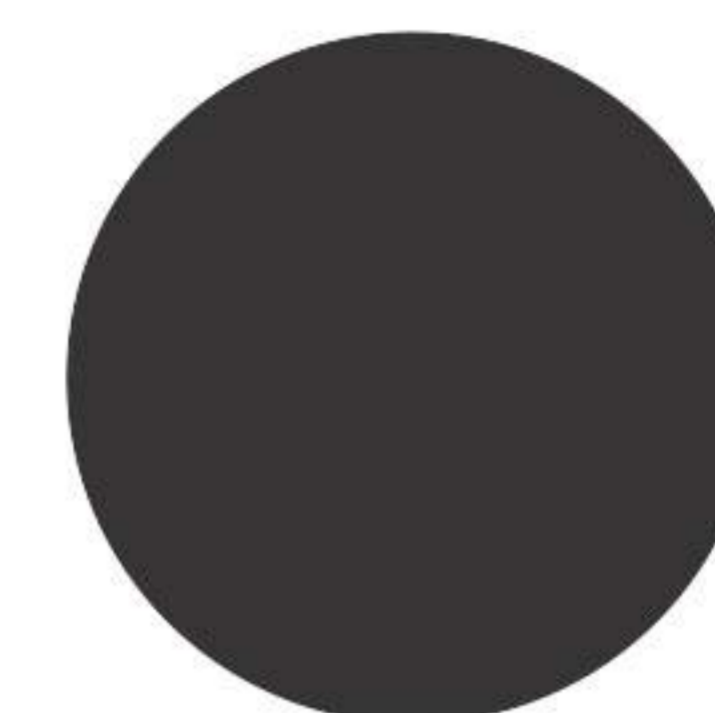
Base MATT Flu Green - G022
srp £119.99



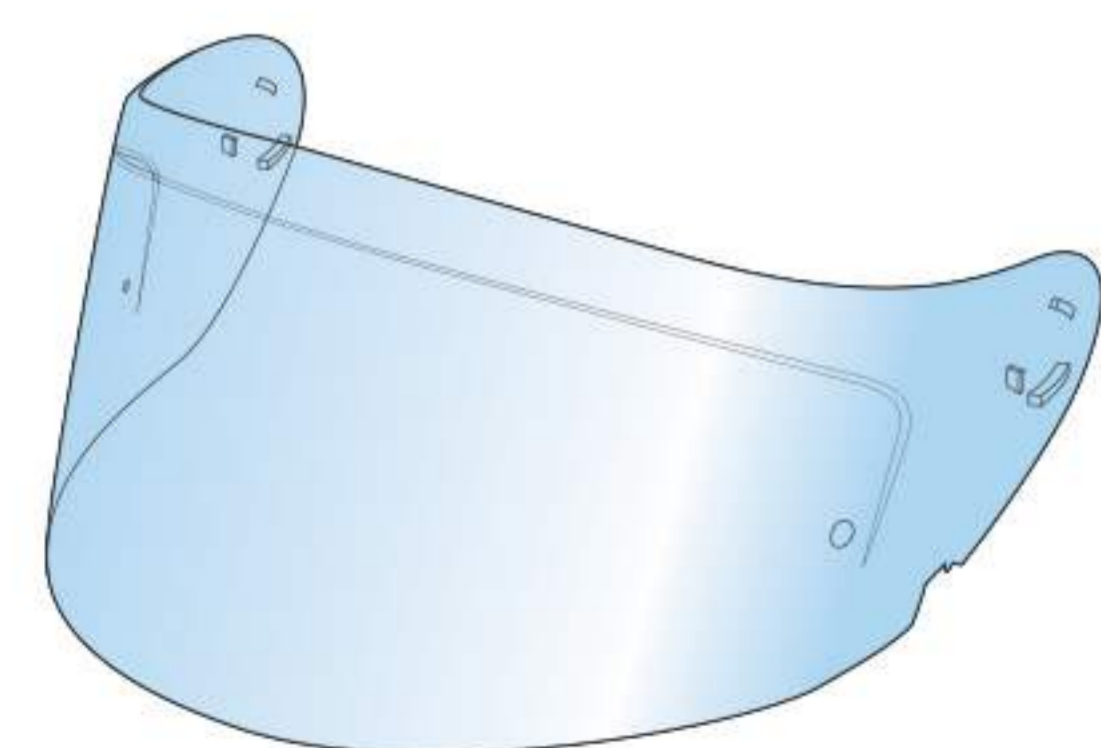
Base Blue - G023
srp £119.99



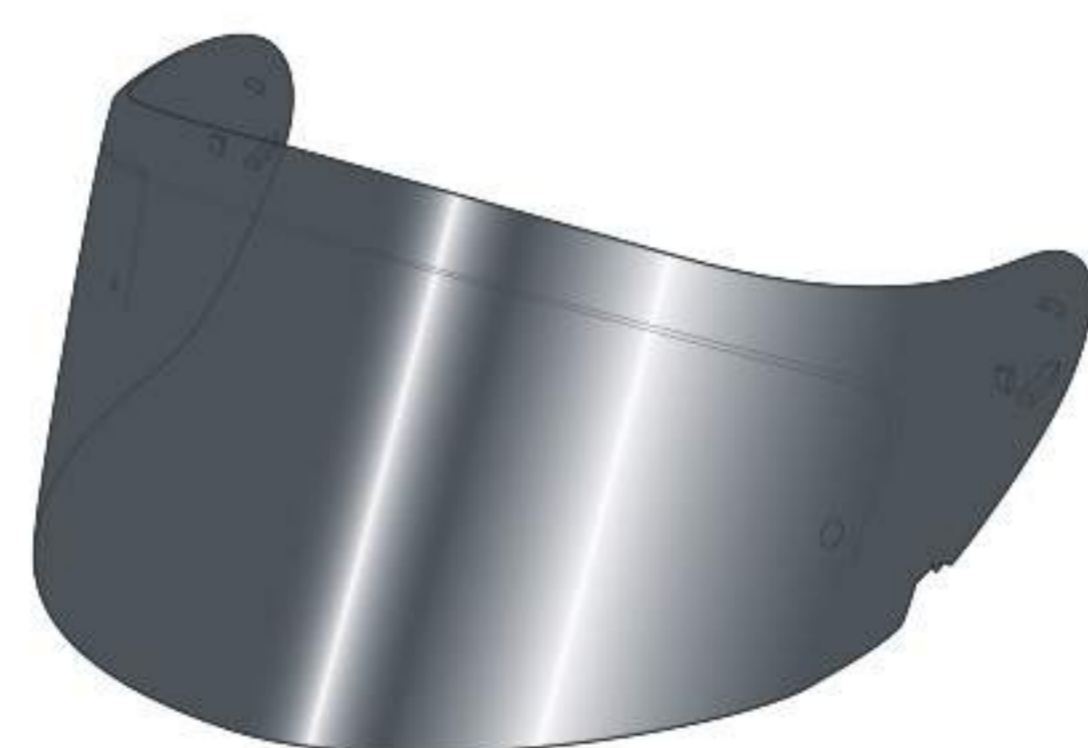
Base Flu Red - G024
srp £119.99



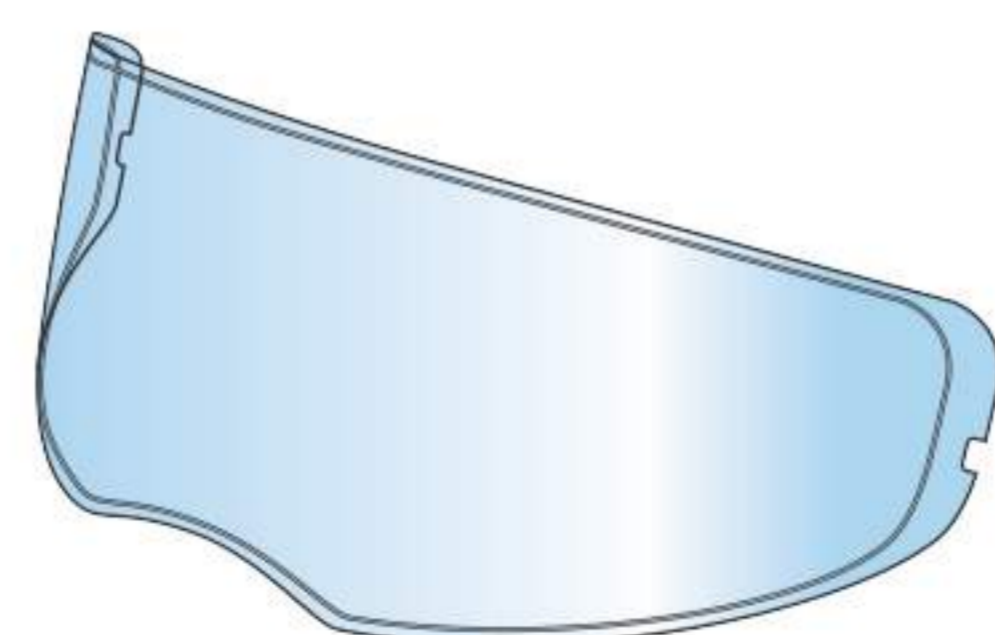
MATT Black - G05
srp £99.99



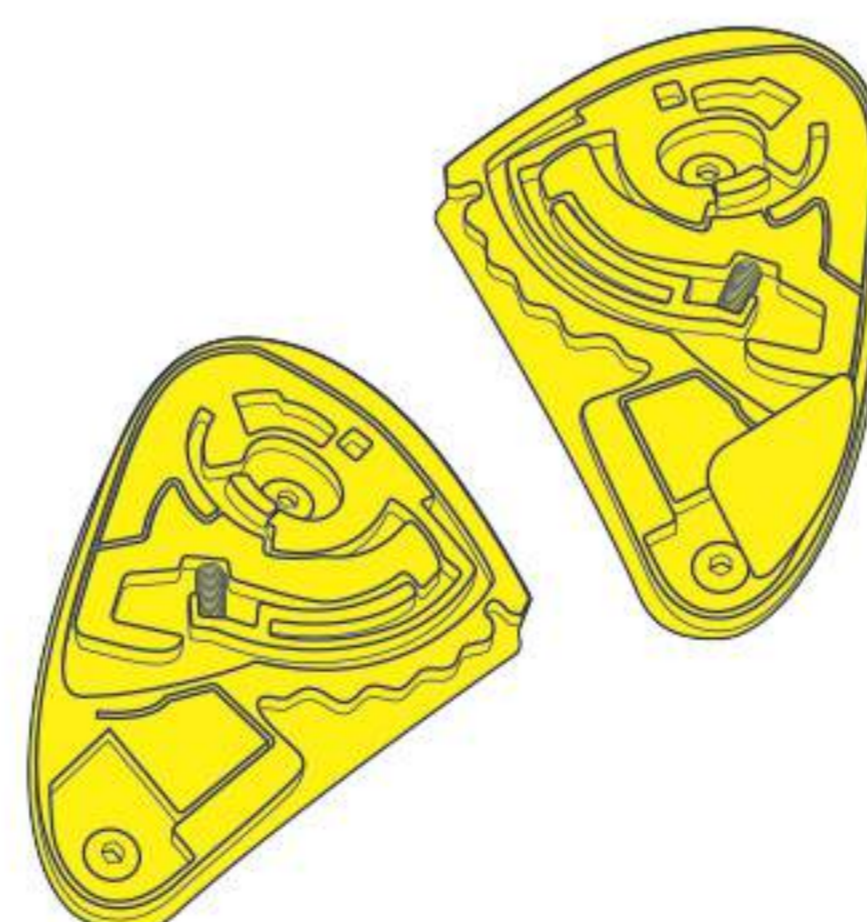
Clear visor



Dark tint visor



Pinlock standard lens



Visor fitting kit

ITEM	CODE
CLEAR VISOR	MP090426
DARK TINT VISOR	MP090427
VISOR FITTING KIT	MP050084
PINLOCK STANDARD LENS	MP220954

SHARKI

The top among Vemar's flip up helmet range. A real modular helmet, extremely versatile, built by thinking for those who want the safety features of a full-face helmet with the possibility to switch to the comfort of an open face.

The easily removable protective chin bar can be replaced by plates for covering the lifting mechanisms, and a panoramic visor completes the transformation of a flip-up helmet into a real open face.

Enlarged field of view for a limitless vertical and peripheral vision and visor ready to fit Pinlock® MaxVision® lenses.

Particularly comfortable fitting, drop-down sun visor covering completely the visual field and Vemar Klima System (VKS), an efficient system for exhausting hot air from the inside of the helmet. Further to the inner housings, a handy slot on the helmet shell allows to fit any type of communication system.



TECHNOLOGY & FEATURES



Hive MATT Flu Orange - S007
srp £169.99



Hive MATT grey - S008
srp £169.99



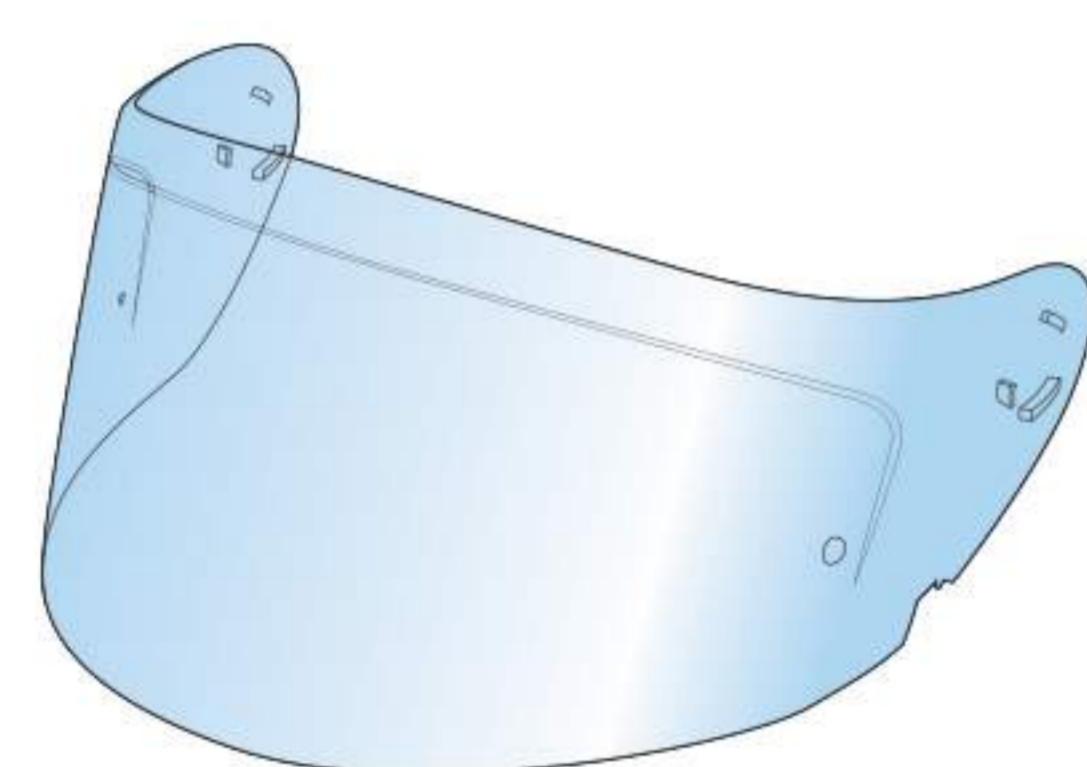
Hive Flu Yellow - S005
srp £169.99



MATT Black - SH5
srp £149.99



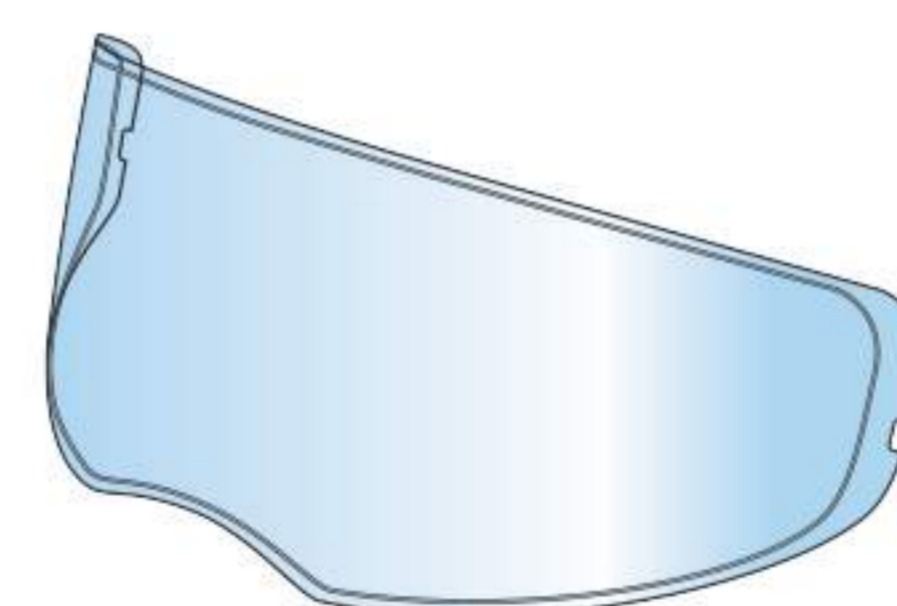
White - SHA
srp £149.99



Clear visor



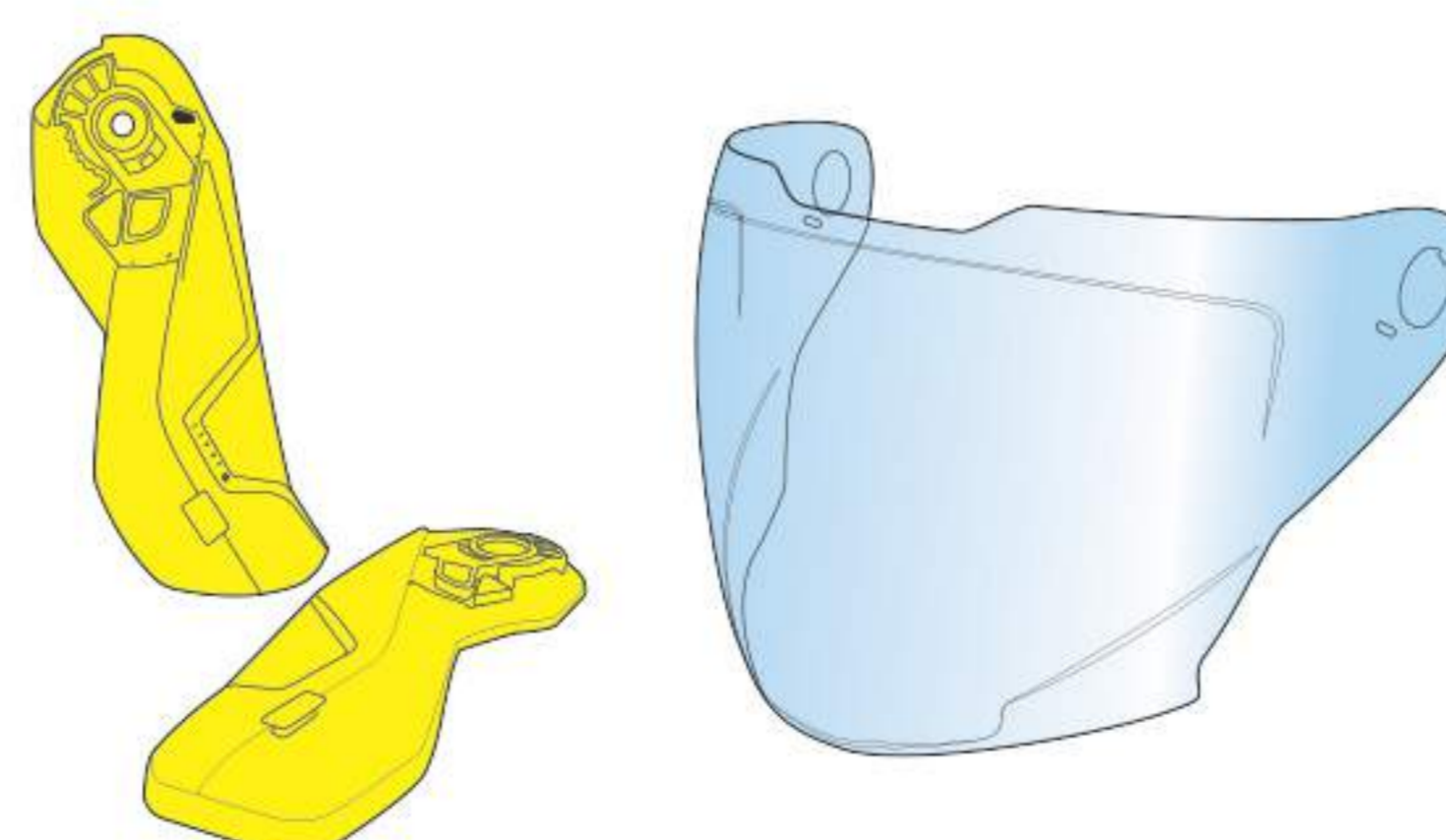
Inner sun visor



Pinlock MaxVision



Visor fitting kit



Transformation kit

ITEM	CODE
CLEAR VISOR	MP090425
VISOR FITTING KIT	MP050083
INNER SUN VISOR	MP090419
PINLOCK MAX VISION	MP220946
TRANSFORMATION KIT - GLOSS	MP050091G
TRANSFORMATION KIT - MATT	MP050091M

TAKU

Built for those taking the first steps in the world of motocross, this off-road helmet features a R-3P shell with a specific base shape to complement neck braces, double D chinstrap, a safe, quick cheek pads release system and a wide viewport.

Air circulation is assured by Vemar Klima System (VKS).

The Taku is one of the most rated products, in its price range, by Transworld Motocross, Dirt Bike, Upshift and many other magazines.

TECHNOLOGY & FEATURES



Blade MATTNavy/Orange - C719

srp £119.99



Blade MATT Grey/Flu Orange - C718
srp £119.99



Blade Navy/Red - C722
srp £119.99



Blade MATT Fluo Yellow/Black - C724
srp £119.99

KONA

Based on the Taku shell, this extremely versatile helmet is designed for on-road and-off road use.

The added features include a Pinlock® ready visor and its fully opening mechanism, a microlock chinstrap buckle, a drop down inner visor.

The Vemar Klima System with adjustable vents assures demisting and optimal air circulation.

TECHNOLOGY & FEATURES



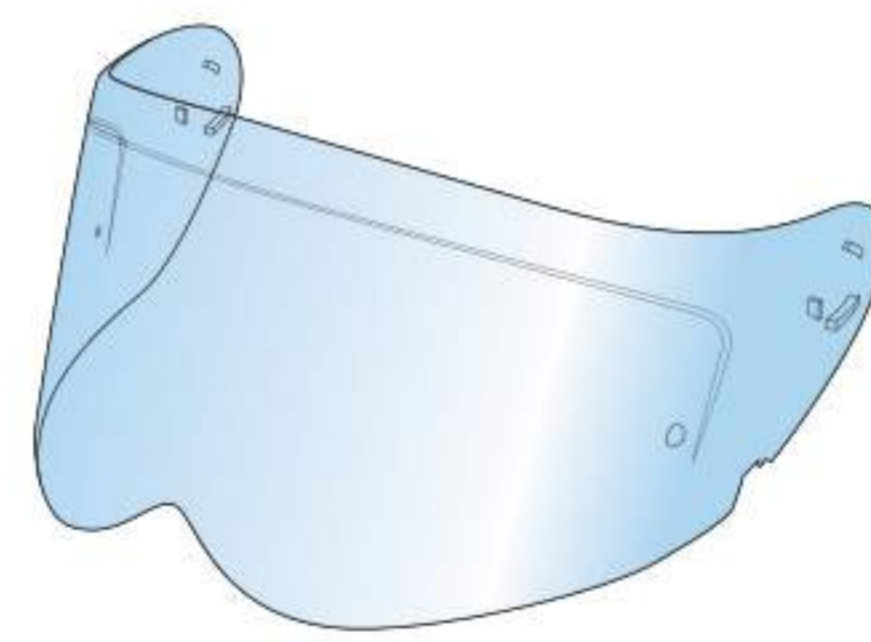
Explorer Fluo Yellow - C805
srp £149.99



Explorer MATT White - C801
srp £149.99



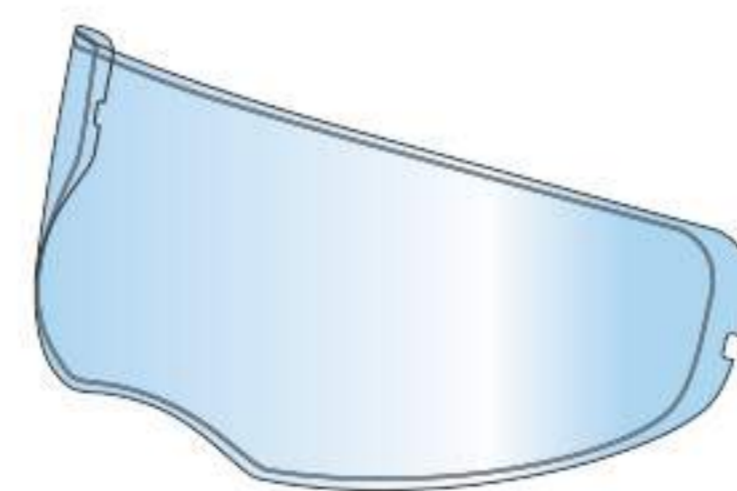
MATT Black - C05
srp £129.99



Clear visor



Inner sun visor



Pinlock standard lens



Visor fitting kit

ITEM	CODE
CLEAR VISOR	MP090442
VISOR FITTING KIT	MP050092
INNER SUN VISOR	MP090443
PINLOCK STANDARD LENS	MP220955

FENG

The top among Vemar's city helmet range.

With a tall, panoramic visor, a drop-down sun visor that completely covers the field of view, a chin strap with microlock closing buckle and Vemar Klima System (VKS), an efficient system for exhausting hot air from inside of the helmet.

This helmet provides a higher protection surface and a more precise fitting than the other common open-face shells.

Further to the inner housings, a handy slot on the helmet shell allows to fit any type of communication system.



TECHNOLOGY & FEATURES



Hive MATT Flu Orange - S007

srp £139.99



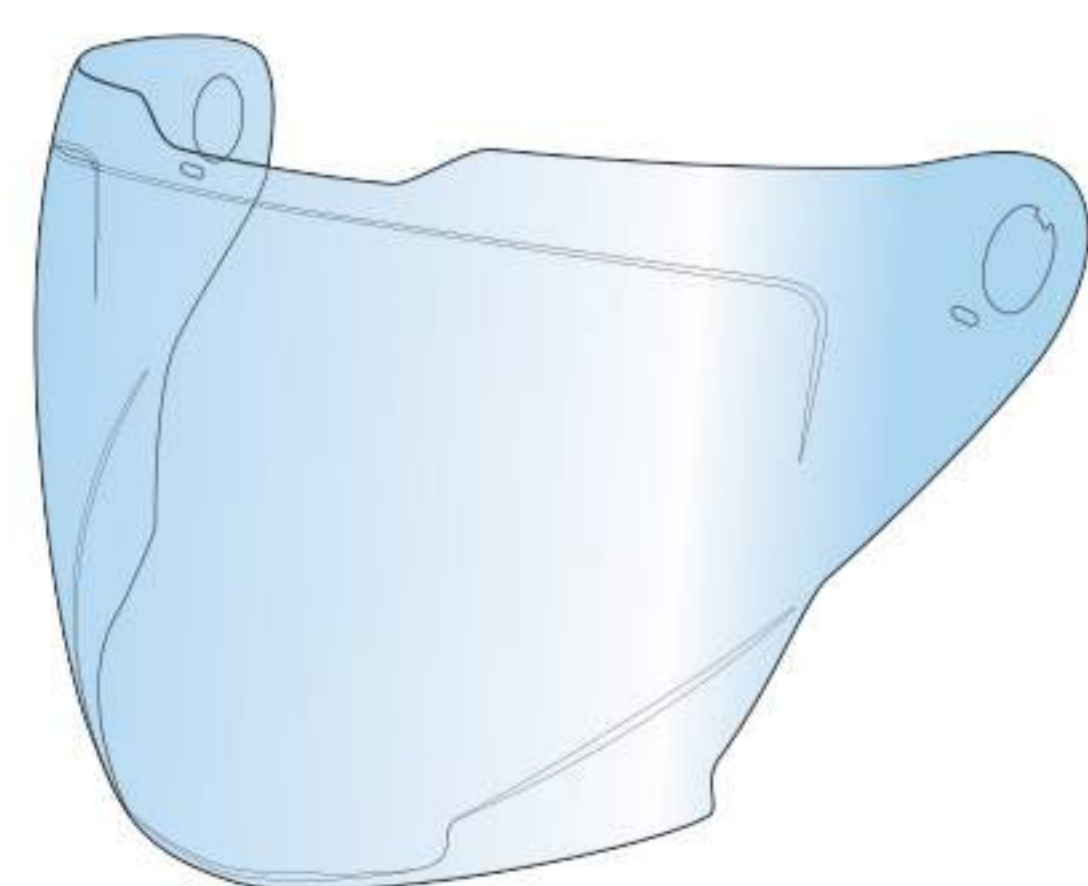
Hive MATT Grey - S008
srp £139.99



Hive Flu Yellow - S005
srp £139.99



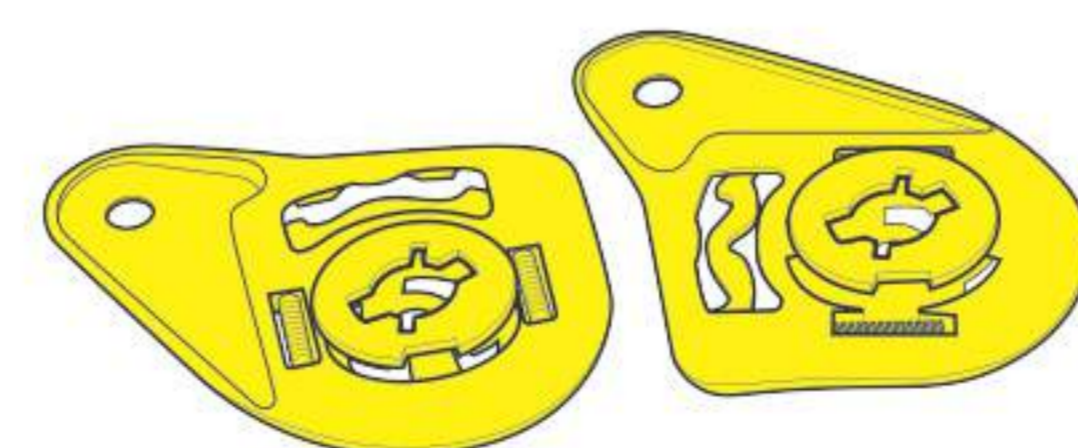
MATT Black - SHS
srp £119.99



Clear visor



Inner sun visor



Visor fitting kit

ITEM	CODE
CLEAR VISOR	MP090444
VISOR FITTING KIT	MP050083
INNER SUN VISOR	MP090419

BREEZE

A modern look and a comfortable fitting with a microlock closing buckle. A special "click" mechanism allows an easy and quick removal of the panoramic visor to be replaced by a peak in the same housings.

The double configuration of the helmet allows to choose between a traditional comfort (visor + inner sun visor) and a more modern and dynamic look (peak + inner sun visor).

TECHNOLOGY & FEATURES



Camo MATT Grey/Flu Yellow - JY19
srp £99.99



Camo MATT Grey/Red - JY13
srp £99.99



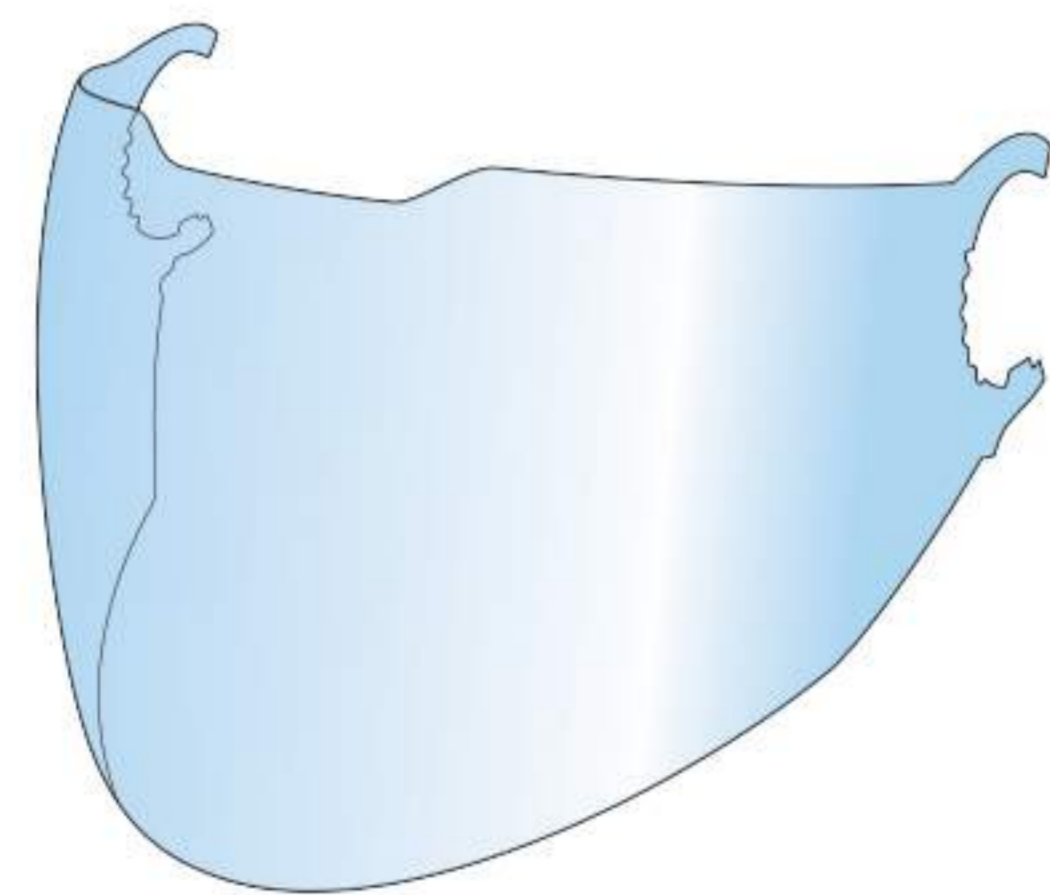
Camo Pink - JY14
srp £99.99



Camo MATT Kaki/Orange - JY17
srp £99.99



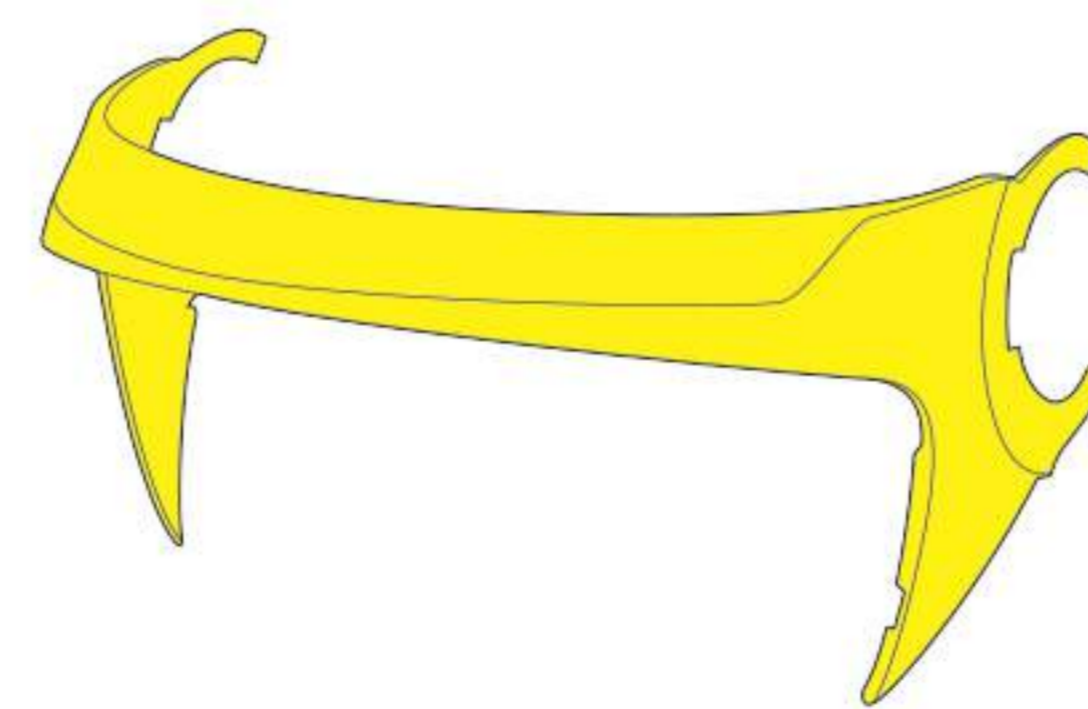
MATT Black - JYS
srp £89.99



Clear visor



Inner sun visor



Peak

ITEM	CODE
CLEAR VISOR	MP090429
INNER SUN VISOR	MP090433
PEAK	MP250339





DISCLAIMER

The weight of the helmets may vary of ~50g, depending on the size and specific cases.
Vemar Helmets® is propriety of International Helmet Company SA
Simpson® is licensed brand for International Helmet Company SA.
IHC reserves the right to make any modification needed for the improvement of the products without giving any notice and does not take any responsibility for errors, omissions and on the colours reproduced in this catalogue, which may appear different from the originals due to the printing requirements.
The reproduction or the publishing of this document and its content is forbidden and legally protected.



Vemar Helmets® and Simpson® are distributed exclusively in the UK by Tri-Motive Brand Distribution.

www.tri-motive.com
sales@tri-motive.com
T: +44 (0)1792 578500
F: +44(0)1792 582948