



TECHNOLOGY
TRADITION
PASSION

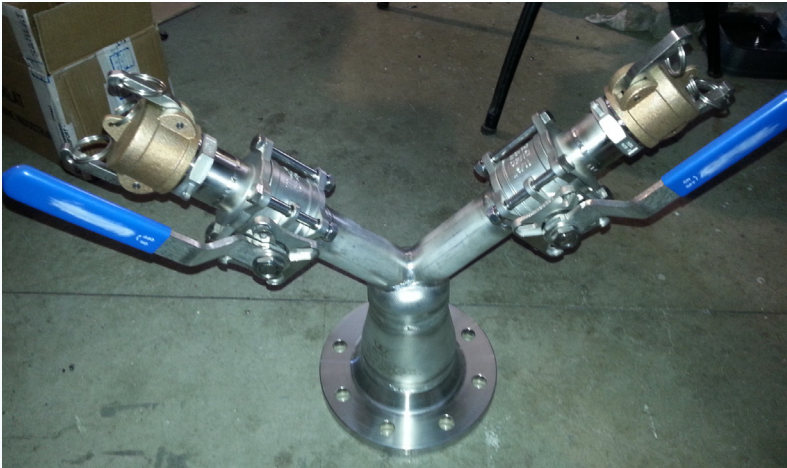
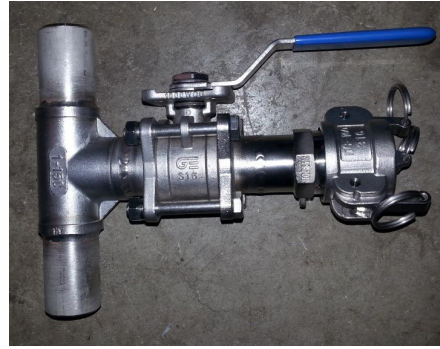
EXCELLENCE IN
DESIGN AND
SHIPBUILDING



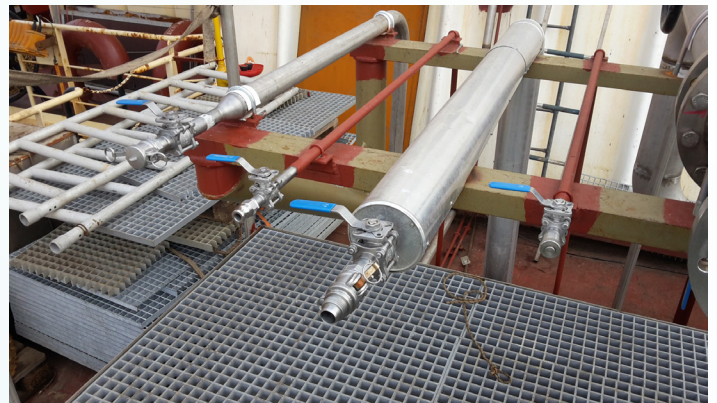
MARINE VALVES

CUSTOM Valves

From Workshop...



...To Onboard



Valve packing and gasket



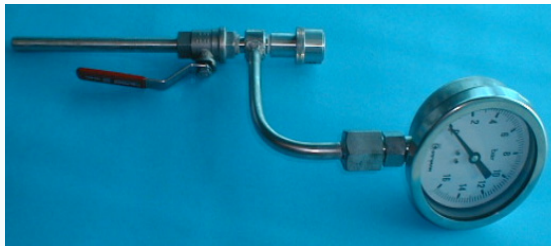
- PTFE PRODUCTS
- FIBER AND GLASS YARN AND CERAMIC PRODUCTS
- ASBESTOS FREE MATERIALS FOR FLANGES AND FLAT GASKETS
- MECHANICAL / SPIROMETALLIC SEALS / RING JOINT
- PROFILE IN EXPANDED RUBBER (MOUSSE) AND COMPACT
- PACKING FOR PUMPS / PISTONS / VALVES
- GASKETS FOR HATCH TANKS CHEMICAL LOAD
- RINGS FOR HYDRAULIC / PNEUMATIC SEAL - O'RINGS

Various



Coupling
Materials : Stainless Steel,Iron,Bronze,Brass

Pressure Sockets
Pressure Gauges
Material : Stainless Steel



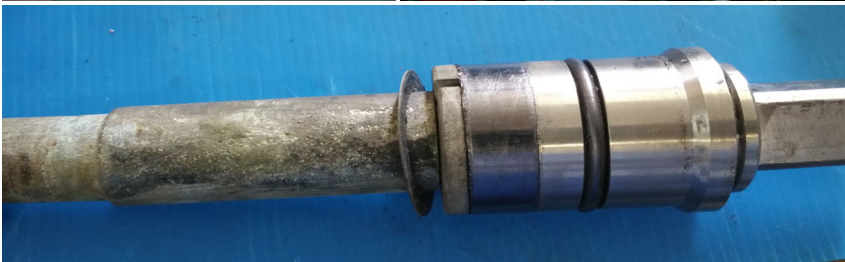
Special Welding Coupling
Material : Stainless Steel

Valve maintenance

We provide assistance and maintenance for any type of valve and similar, reconstructing the worn parts such as:



- GASKETS
- SEATS
- AXLES
- BUSHES
- DISKS



Flanged reductions



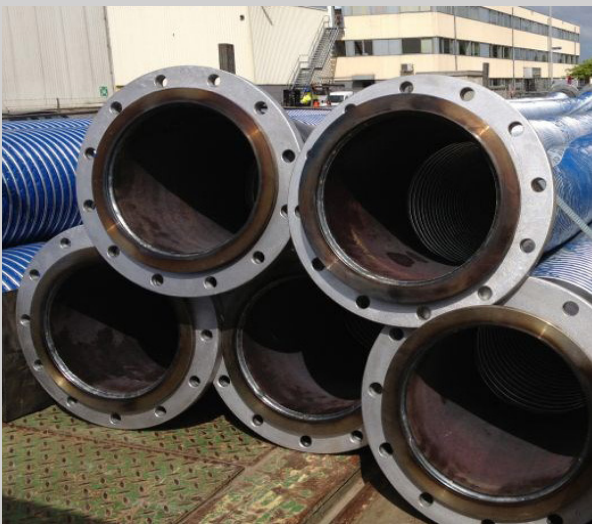
From Workshop...

...To Onboard



Hoses

- COMPOSITE HOSES FOR DECANTING: CHEMICAL PRODUCTS , "P.O." POLYPROPYLENE OXIDE , EMERGENCY PUMP , CARGO VAPOUR AND P.O." , "BTW" WITH CHEMICAL PRODUCT.
- STEAM FLEX HOSE.
- COMPRESSED AIR , WATER AND NITROGEN FLEX HOSE.
- FIXED/MOVABLE "BTW" FLEX HOSES AND DECK COOLING.
- TANKS VENTILATION FLEX HOSES WITH VALVE CONNECTION AND MANIFOLD FLANGE.
- BTW CHEMICAL HOSE.
- "STRIPPING" FLEX HOSE.
- "FRAMO" PUMP "PURGING" FLEX HOSES.
- NITROGEN SHIPMENT AND DOUBLE BOTTOM PADDING FLEX HOSES.
- CONNECTION TANKS VENTILATION FLEX HOSES WITH VALVE AND FREE ORIFICE.
- BTW RUBBER HOSE.



Ventilation

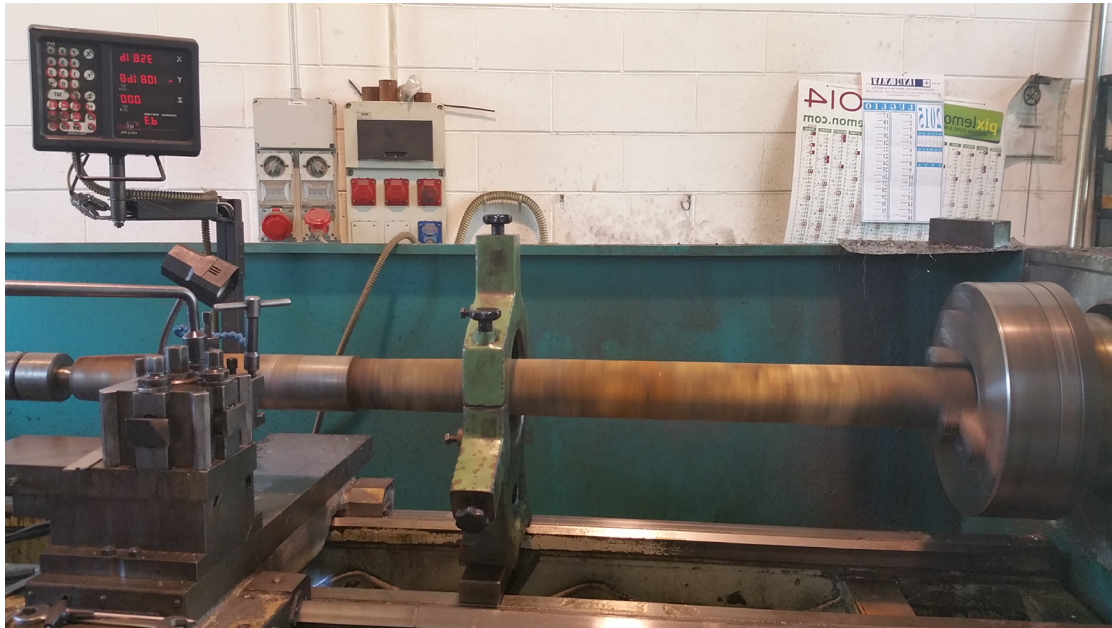
- PIPES FOR VENTILATION
- INDUSTRIAL HEATING
- AIR CONDITIONING
- FOR SUCTION AND PUMPING OF CHEMICAL FUMES AND VAPORS AGGRESSIVE
- FOR SUCTION AND PUMPING OF EXHAUST GAS VEHICLES
- SMOKE AND VAPORS AT HIGH TEMPERATURES



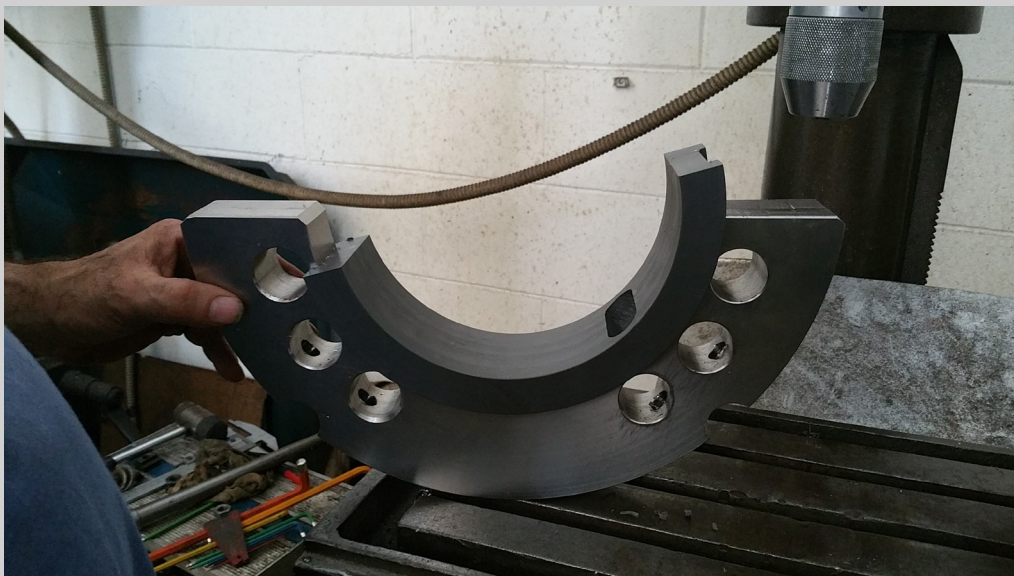
Flexible ducting made of one polyester fabric both sides PVC coated, external metal wire sewn onto the wall with a polyester black scuffstrip. Each end with reinforced and helix-free cuff.



Shaft Working



Metal semi-ring and plastic insert working

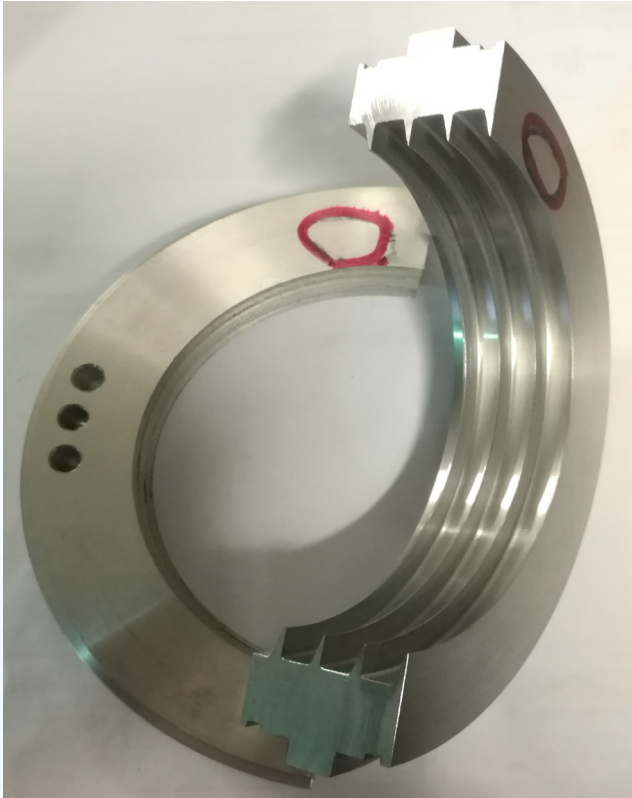


Bronze gear working



STUFFING BOX
WORKING

Precision machining



Split Labyrinth Seal
Material: Peraluman 35



Coupling
Material : Cast Iron



Blocks For Dinghies
Material : Stainless Steel



Milling Support
Material : Stainless Steel

Precision machining

Special Nipples
Material : Stainless Steel



Pump Bell Housing
Material: Carbon Steel



Special Plate
Material: Stainless Steel

Precision machining

Junction
Material : Stainless Steel

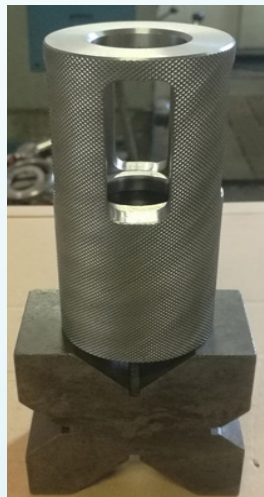
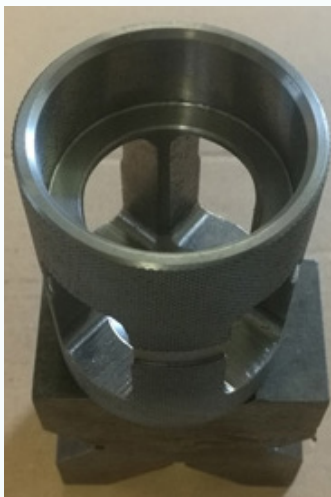
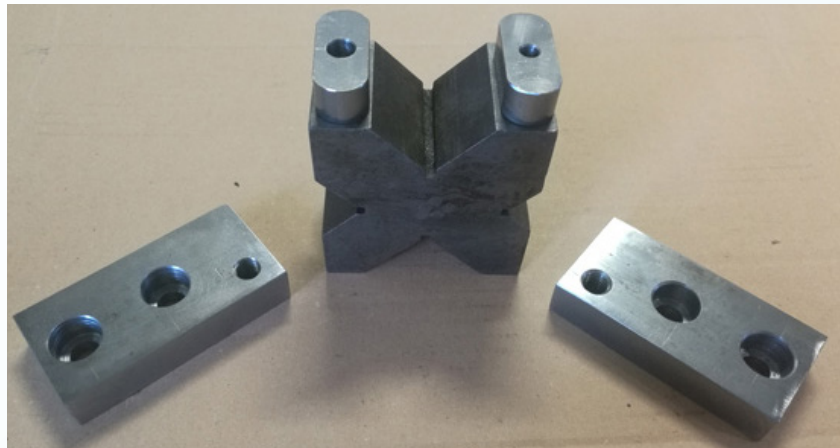
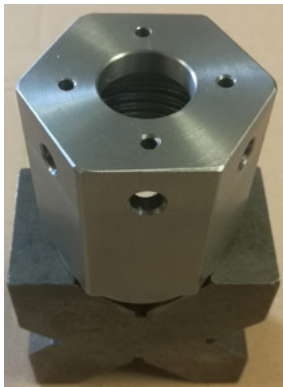


Special Welding Coupling
Material : Stainless Steel

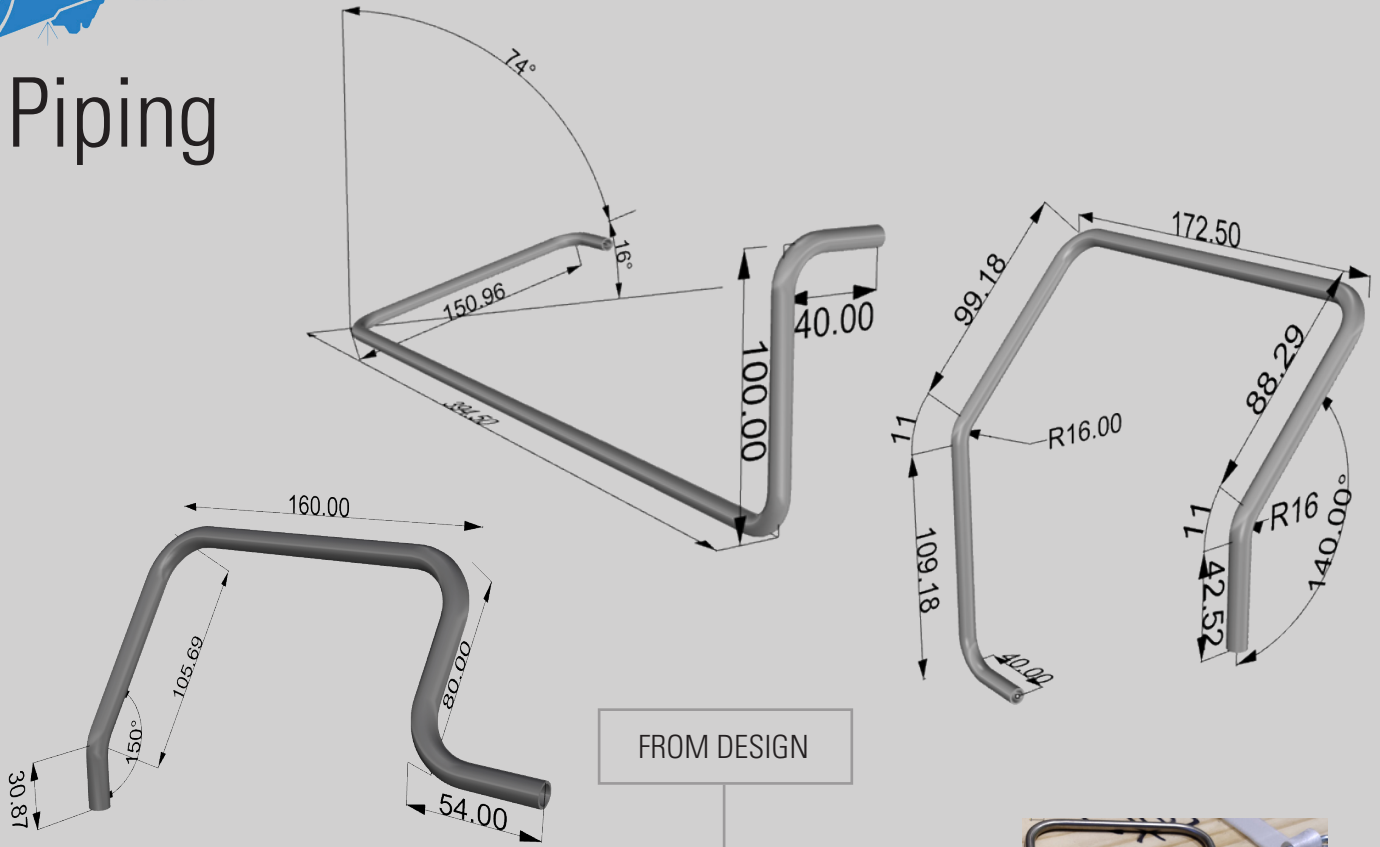


Special Cup
Material : Stainless Steel

Precision machining



Piping



FROM DESIGN

Material: Seamless tubes Inox 316
 Dimensions: 6x1 - 8x1 - 10x1

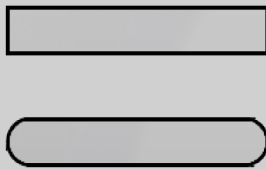
TO PRODUCTION



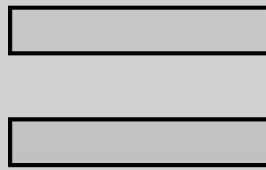
Keys

We produce keys , according to DIN 6885 - UNI 6604 (ex ISO 773) and custom
 Material: Duplex, Super Duplex, Monel, 17-4-PH- Inox 316- 42Crmo4-C45-39Nicrmo4

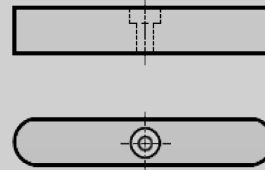
Type A -
round-ended



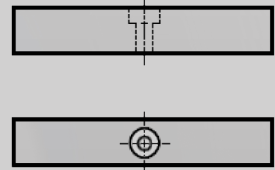
Type B -
straight-ended



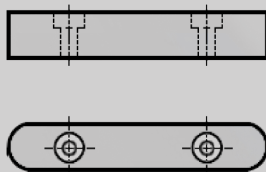
Type C -
round ended with hole
for 1 retaining screw



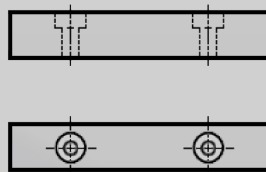
Type D -
straight ended with hole
for 1 retaining screw



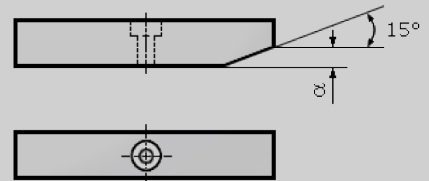
Type E -
round ended with hole
for 2 retaining screw



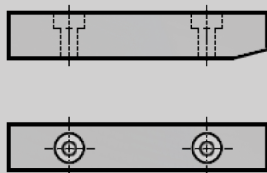
Type F -
straight ended with hole
for 2 retaining screw



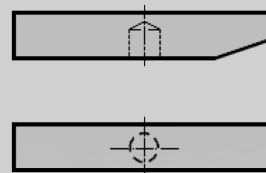
Type G -
straight ended with chamfer and hole
for 1 retaining screw



Type H -
straight ended with chamfer and hole
for 2 retaining screw



Type J -
straight ended with chamfer and hole
for 1 spring dowel sleeve



DIN Globe Valves

straight and angle types

- Threaded globe valves
- Flanged globe valves



GLOBE VALVE
TYPENR. 3112



GLOBE VALVE
TYPENR. 3101



GLOBE VALVE
TYPENR. 3142

Available in

- Cast iron
- Nodular cast iron
- Cast steel
- Stainless steel
- Bronze RG5 and RG10

Options

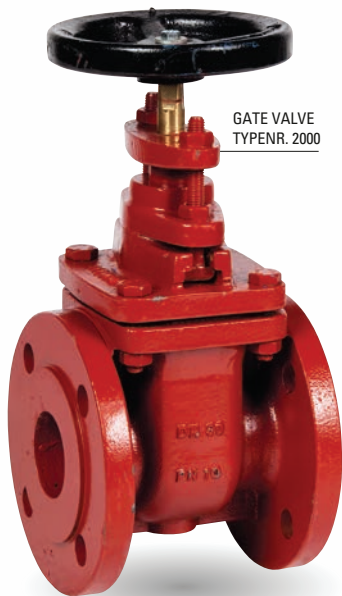
- Threaded or flanged
- S(crew) D(own) N(on) R(eturn)
- With regulation cone
- Bellow seated
- With bronze or stainless steel inner parts
- Metal or soft seated
- Electric or pneumatic operated

Pressure Rates

- PN 6, PN 10, PN 16, PN 40

DIN Gate Valves

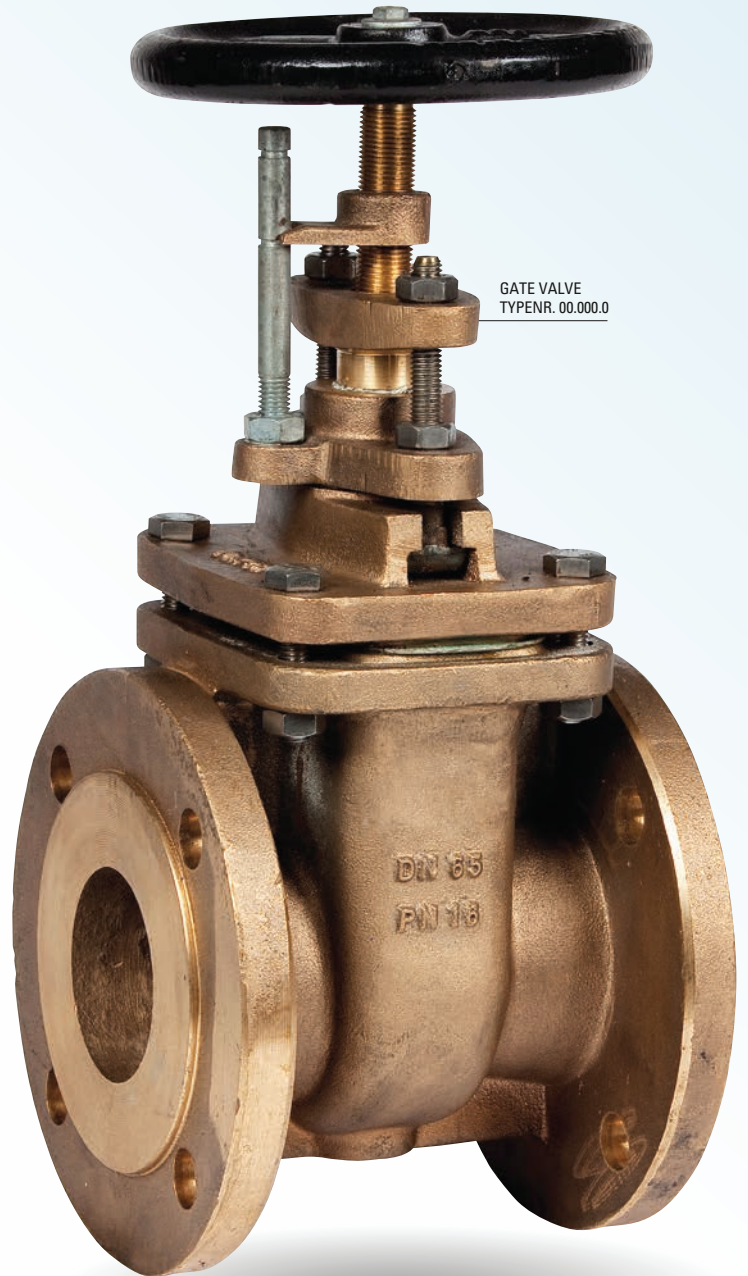
- Threaded gate valves
- Flanged gate valves



GATE VALVE
TYPENR. 2000



GATE VALVE
TYPENR. 2010



GATE VALVE
TYPENR. 00.000.0

Available in

- Cast iron
- Nodular cast iron
- Cast steel
- Stainless steel
- Bronze RG5 and RG10

Options

- Threaded or flanged
- With bronze or stainless steel inner parts
- Metal or soft seated
- Single or double threaded
- With open-close indicator
- With rising or non-rising handwheel
- F4 and F5 length
- Electric or pneumatic operated

Pressure Rates

- PN 6, PN 10, PN 16, PN 40

DIN Butterfly Valves

- Wafer type butterfly valve
- Mono flange butterfly valve
- Lug type butterfly valve
- Double flange butterfly valves
- High performance butterfly valve



BUTTERFLY VALVE
TYPENR. 46010-1

BUTTERFLY VALVE
TYPENR. 57000-1

BUTTERFLY VALVE
TYPENR. 9600W-S

Available in

- Cast iron
- Nodular cast iron
- Cast steel
- Stainless steel
- Bronze RG5 or RG10

Types

- Wafer type
- Mono flange
- Lug type
- Double flange
- High performance

Liners

- NBR
- EPDM
- Teflon

Options

- Pneumatic, electric or hydraulic controlled
- Hand lever
- Gear box
- Electro hydraulic actuator
- Fire safe execution
- Triple excentric high performance

Pressure rates

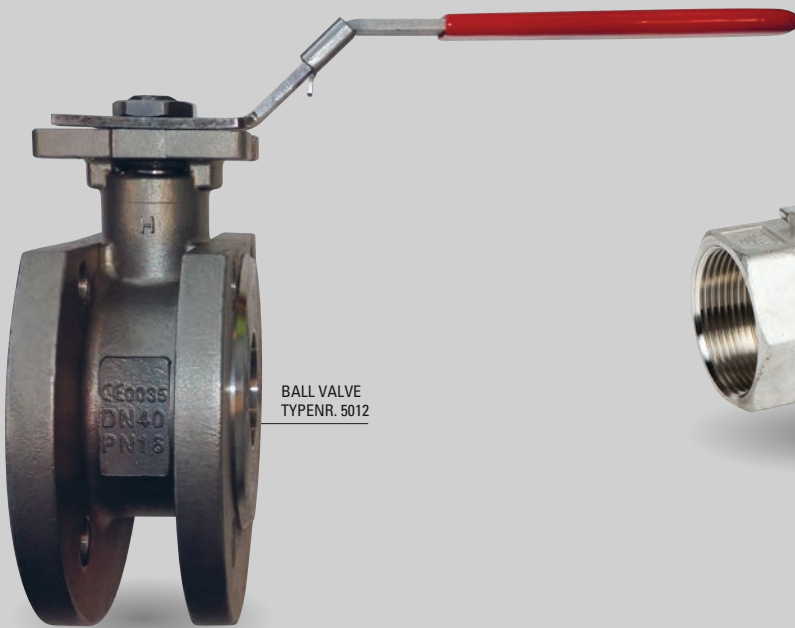
- PN 6, PN 10, PN 16

DIN Ball Valves

- 1 piece, 2 piece and 3 piece ball valves
- Wafer type ball valve
- Brass threaded ball valve
- Bronze ball valve
- 3 way ball valves
- Fire safe ball valves



BALL VALVE
TYPENR. 5011



BALL VALVE
TYPENR. 5012



BALL VALVE
TYPENR. 5012

Available in

- Cast iron
- Nodular cast iron
- Cast steel
- Stainless steel
- Bronze
- Brass

Options

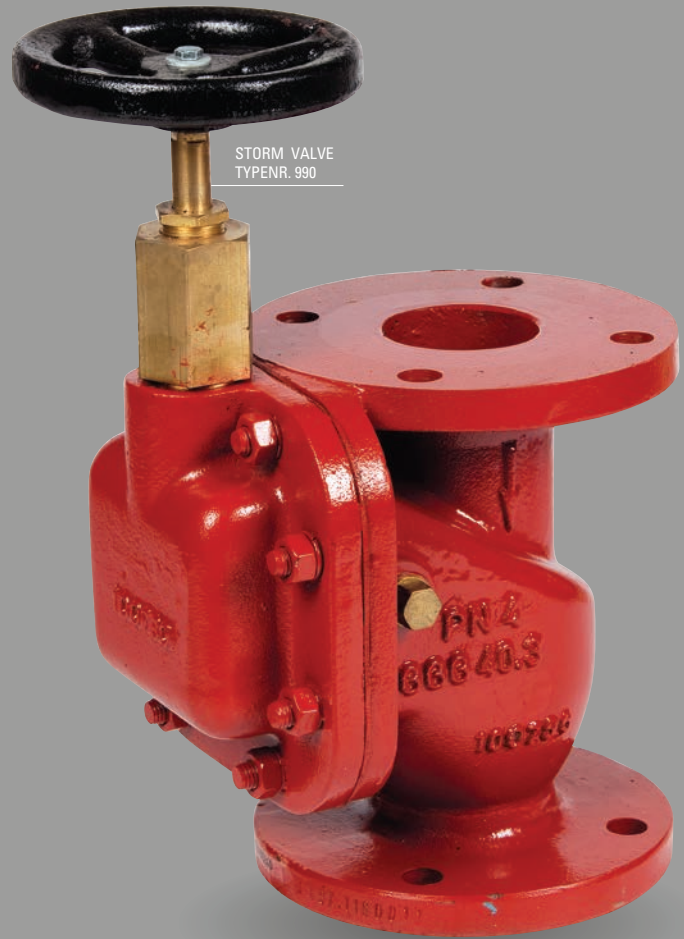
- Threaded (bsp / npt) / flanged
- Fullbore / Reduced bore
- Electric or pneumatic operated
- ANSI execution

Pressure Rates

- PN 10, PN 16, PN 40, PN 64, PN 100

Shipbuilding Valves

- Storm Valves
- Mudboxes
- Quick-closing valves
- Fire fighting valves
- Self closing valves
- Souding cocks
- Discharge valves
- Line blinds



STORM VALVE
TYPE NR. 990

Available in

- Cast iron
- Nodular cast iron
- Bronze RG 5 and RG 10
- Cast steel
- Stainless steel

Pressure Rates

- PN 6, PN 10, PN 16



MUDBOX
TYPE NR. DN100

JIS Valves

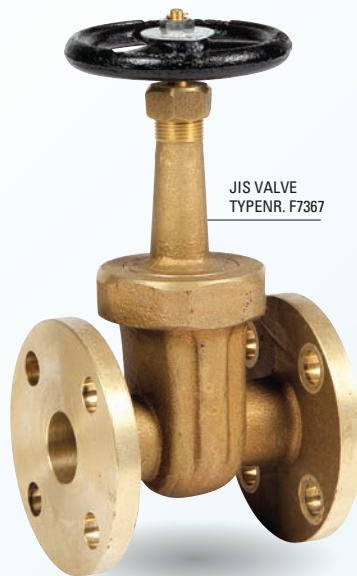
- Globe valves / angle
- Gate valves
- Butterfly valves double flanged
- Butterfly valves wafer / LUG type
- U-Type butterfly valves
- Y-strainers
- Lift check valves
- Swing check valves
- Storm valves
- Sounding cock valves



JIS VALVE
DOUBLE FLANGED 5K / 10K



JIS VALVE
TYPENR. F7352



JIS VALVE
TYPENR. F7367

Available in

- Cast iron
- Cast steel
- Bronze
- Malleable iron globe valves

Options

- With thread or flanges
- (S)crew (D)own (N)on (R)eturn execution
- With or without positioner

Pressure Rates

- JIS 5K
- JIS 10K
- JIS 16K
- JIS 20K
- JIS 30K
- JIS 40K



ANSI Space Valves

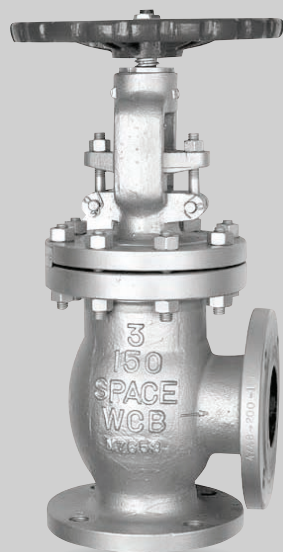
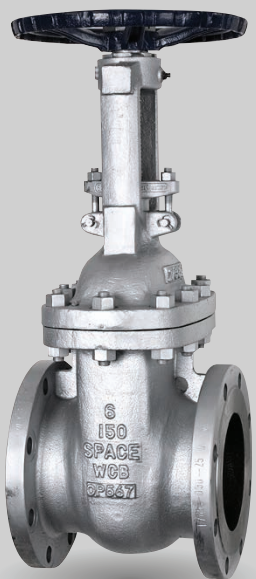
The Space Valve brand is the recognized leader in the Marine Valve Industry. This reputation is earned because of serving our customers with reliable and high quality products which are designed for the rigorous conditions of the marine industry.

Space Valves are available from stock from our warehouses in the USA. Our valve shop can modify and customize the Space products for you with indicators, by-passes, reach rod systems, actuators and many other options.

Space Valves are an ABS approved product. We can also furnish certification like DNV, LRS and GL with in-house testing in our facilities worldwide.

Space Valves have a proven track of reliability and performance. This reputation plus our commitment to provide an excellent product that meets the requirements of the Maritime Industry, makes Space Valves a logic choice for meeting your Maritime requirements.

- Gate valves
- Globe valves
- Check valves

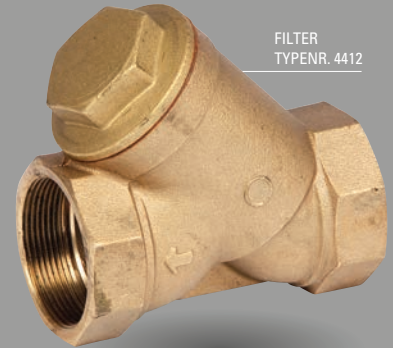


Filters and Strainers

- Threaded Y-type filters
- Flanged Y-type filters
- Threaded filters
- Flanged filters
- Simplex filters
- Duplex filters



FILTER
TYPENR. 4411



FILTER
TYPENR. 4412



STRAINER
TYPENR. 4311

Available in

- Cast iron
- Nodular cast iron
- Cast steel
- Stainless steel
- Bronze RG5 and RG10

Options

- Y-type filters threaded
- Y-type filters flanged
- Bronze filters threaded
- Bronze filters flanged
- Simplex filters
- Duplex filters

Pressure ranges

- PN 6/10/16/25 and PN40
and ANSI class 150# and 300#.

Other rate is deliverable on request.

Pres-Vac vapor return system

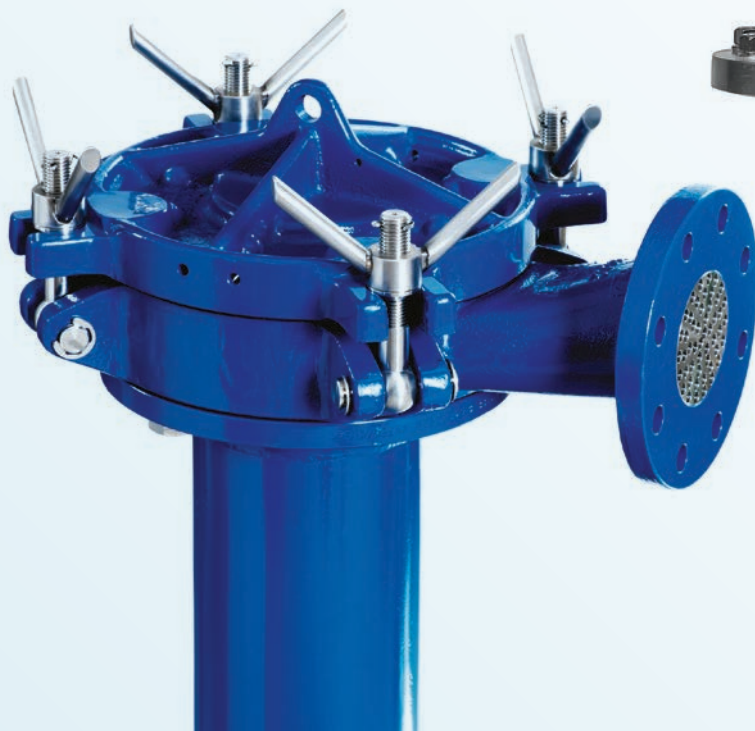
Pres-Vac has been a maritime leader in terms of pressure vacuum valves for many years.

Pres-Vac joint forces to provide the BeNeLux market with these pressure vacuum valves, their spare parts, service and maintenance.

The complete range of Pres-Vac valves are multiple certified from explosion group IIA up until IIB (MESG 0,9 up until MESG 0,5).

Features

- Capacity: 400 - 12.000 Nm³/h
- Pressure: 10 to 70 kPa
- Vacuum: 1.5 to 7.0 kPa
- No unwarranted emissions
- DN 50 tot DN 600
- Optimal safety
- Low noise
- Low blow down
- Simple operations and maintenance
- Lower number of parts
- Compliance with all current rules and regulations



PRES·VAC

WINEL Air Vent Heads

- Round, Box & Cylindrical models
- Galvanized Fabricated Steel
- Seawater resistant Aluminium Alloy

Class	Type approval
IMO	Type approval since 2009
ATEX / IECEX	Approved for operation in explosive areas
USCG	AMS Type approval



CM Seawater resistant
ALUMINIUM ALLOY



RM
GALVANIZED



RMO
GALVANIZED



BOLERO
GALVANIZED

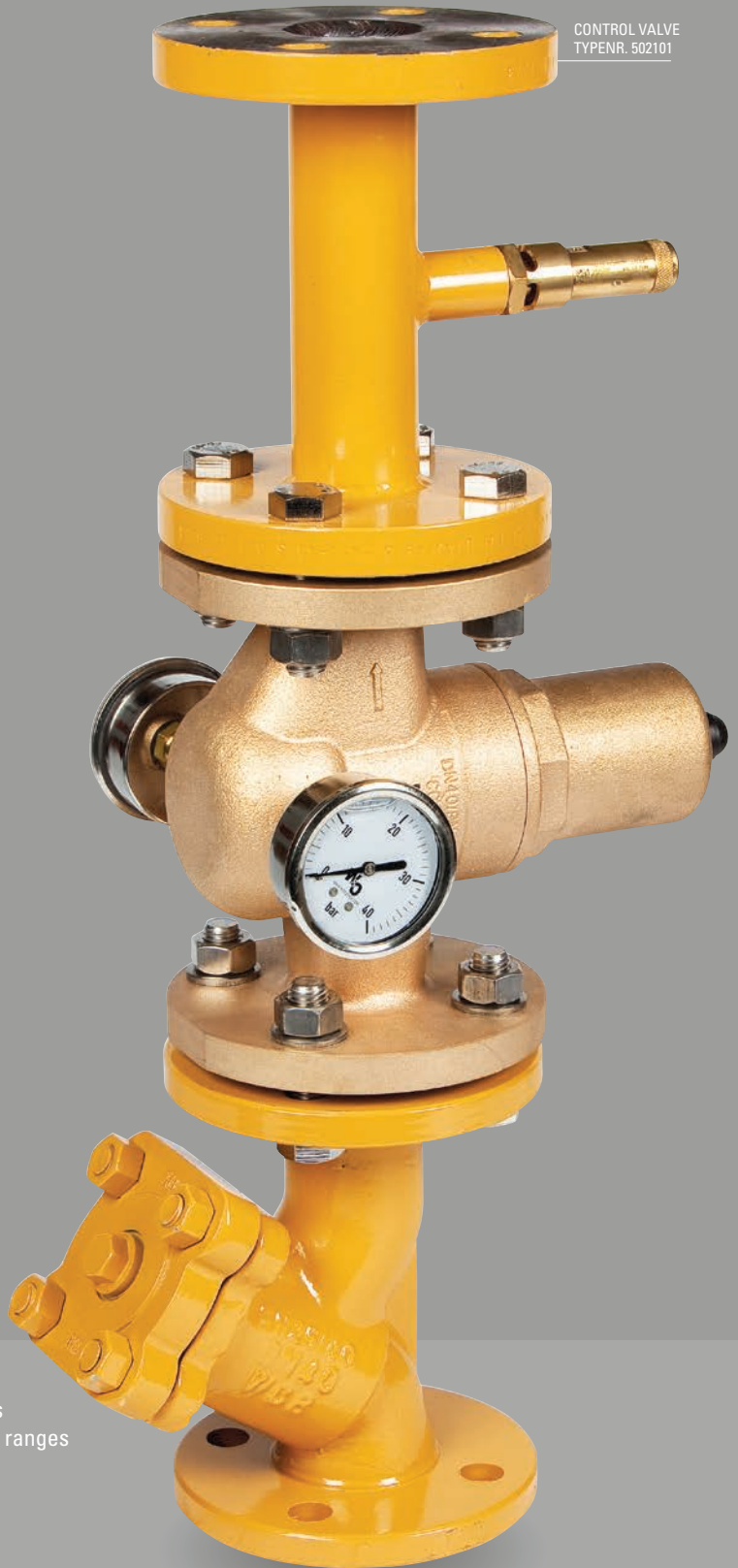
Features

- DIN PN10 flanges
- JIS SK/10K flanges
- IACS approved, IMO compliant
- Original Winel, 50+ years experience
- Available from stock
- Stainless Steel screen
- High Flow Design
- PE Floating Ball



Measuring and Control Equipment

- Emerson (coriolis) equipment
- Temperature regulating valves
- Self actuated valves
- Mixing valves
- Solenoid valves
- Pressure gauges
- Temperature gauges
- Needle valves
- Flow meters



Product range

- Flow meters
- Temperature regulating valves
- Temperature control valves
- Self actuating valves
- Mixing valves
- Solenoid valves
- Pressure gauges
- Temperature gauges
- Needle valves
- Double block and bleed valves

Options

- Various materials
- Various pressure ranges
- Reducers

Check Valves

- Swing check valves
- Wafer type check valves
- Duo-check valves
- Lift type check valves
- Disco type check valves



CHECK VALVE
TYPENR. 965



CHECK VALVE
TYPENR. DUO CHECK



CHECK VALVE
TYPENR. 950

Available in

- Cast iron
- Nodular cast iron
- Cast steel
- Stainless steel

Options

- Threaded
- Flanged
- Wafer type

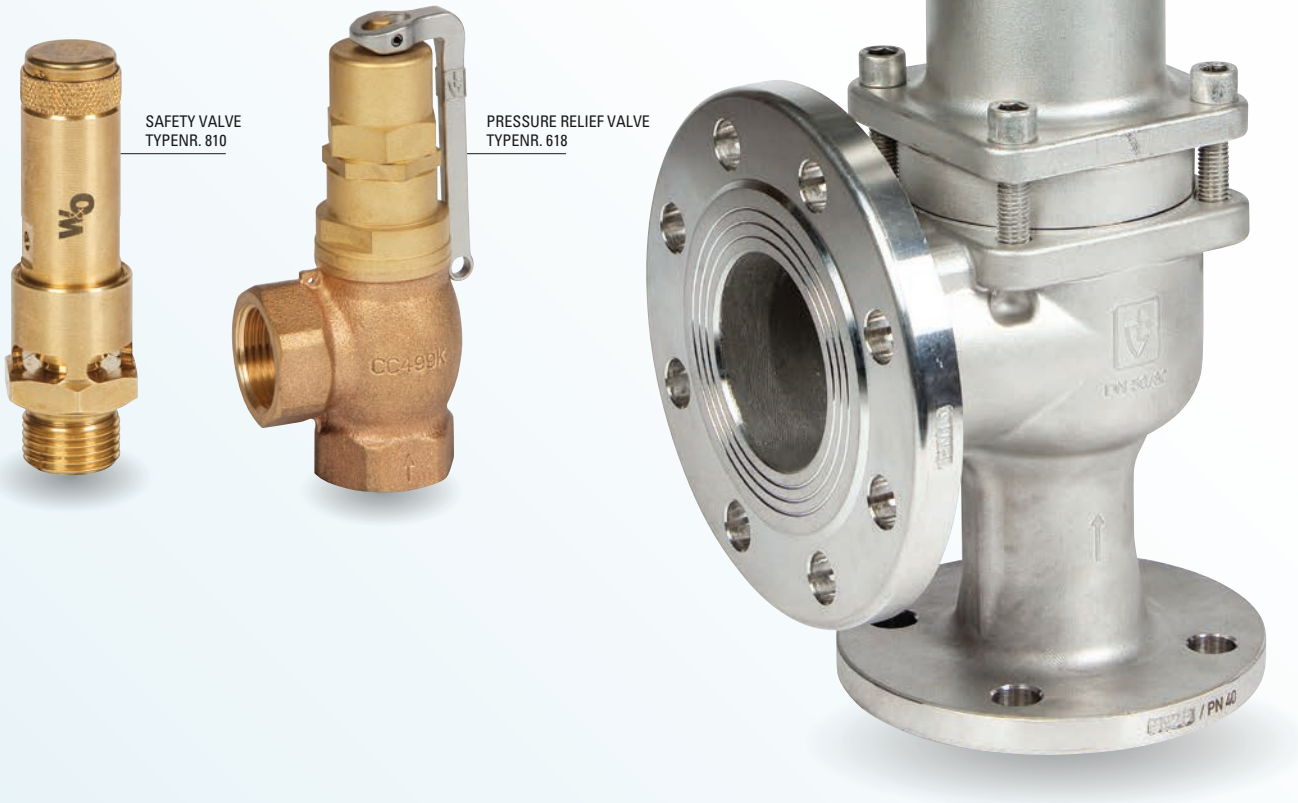
Pressure Rates

PN 6, PN 10, PN 16, PN 25, PN 40.

Other rates on request.

Safety Valves

- Safety valves
- Pressure reducing valves



Available in

- Cast iron
- Nodular cast iron
- Cast steel
- Stainless steel
- Bronze
- On request in other materials

Options

- Threaded
- Flanged
- Straight or angle
- For liquids or gasses
- In DIN and ANSI
- Pressure reducing equipment

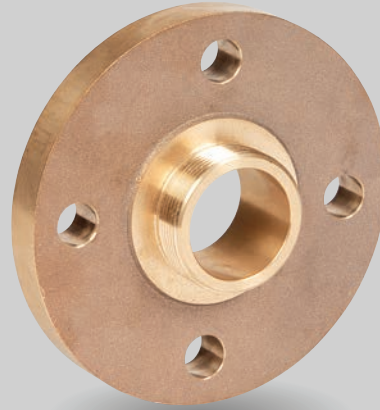
Pressure Rates

Standard in PN 10, PN 16 and PN 25

Other rates on request.

Piping Material

- Cam lock couplings
- Compensators
- Stainless steel compensators
- Non ferro compensators
- Tapes (anti splash/pipe repair, hatch cover etc)
- Flanges DIN PN/6/10/16
- Flanges JIS 5K/10K
- Bolts and nuts
- Cunifer flanges and piping
- Pipes and hoses



Options

- Deliverable in various materials
- Available in various pressure ranges
- Approved by the class societies

Tapes

Insulation Tape

Heat stop is designed to insulate extreme high temperature surfaces in ships machinery rooms. Our basalt reinforced insulation tape complies with IMO MSC.61/67 and SOLAS Reg II-2/15.2.10. Heat stop tape comes with a modified reinforced adhesive tape to close the ends of the wrapping.



Anti-Splash Tape

Anti-splash tape is used for applications in the marine & offshore industry. This multilayer aluminium tape has been designed by safety specialists in order to prevent spray outs of hot and hazardous liquids from piping systems. Spraystop complies with IMO A653(6) regulations and carries approvals from all major classification societies.



Pipe Repair Tape

Piperep is ideal for all types of repair and maintenance applications. This product will set under water making it ideal for applications in splash zone, corrosion protection, piling protection and electrical insulation. Our pipe repair products retain pressure on supply lines.



Hatch Cover Tape

HaCo Tape keeps moisture, weather, sound and fumes from affecting your valuable cargo, the blue liner ensures a tight seal when installed according instructions. HaCo Tape can be installed between 5 and 40 Celsius and will withstand conditions from -15 to 70 Celsius. Rolls are standard 20 meter of self-adhesive SBS bitumen rubber compound coated to a modified blue HDPE liner and with release PE Liner.



Non-Welded Solutions

Pyelok

By Tube-Mac mechanically attached fitting system, is the best alternative to threaded, welded or brazed joints. The Pyelok system incorporates an external radial swaging process which results in:

- A permanent leak tight joint for stainless, carbon steel and CuNi 70/30.
- Available for NPS, OD and metric pipes
- IACS- approved: LR/DNV-GL/ABS/BV/RR
- Pressure range: up to 9300 PSI/640 Ba



PYPELOK

Victaulic

The world leader in grooved and plain-end mechanical pipe joining systems, is the most versatile, economical and reliable pipe joining system for the maritime industry. A wide range of products are approved and for use of stainless steel, GRE/GRP, and copper nickel.

- Marine fire resistant NBR/EPDM-gasket (Cat. A-spaces)
- IACS- approved: LR/DNV-GL/ABS/BV/RR/RINA/KR/USCG
- Up to 25 bar working pressure



Victaulic

Norma Connect

- Economical pipe-joining technique for both plastic and metal pipes
- Plain-ended pipes are easily joined by hand
- Tightening by two bolts only using torque wrench
- Allows axial misalignment and angular deflection
- Covers gaps up to 35 mm between pipe ends
- Reusable and very economical due to short assembly time
- No treatment of pipe ends nor pipe alignment required



NORMA GROUP



LNG Solutions

Bestobell LNG valves are specially designed and manufactured cryogenic valves for handling LNG, and are approved by all Marine Class Societies.

The technology comes from Bestobell Valves' 50 years of experience in cryogenic valve design and manufacture for the industrial gas and downstream LNG industries.



Fuel-Gard

Maritime LNG, Bunker Fuel & Gas Piping

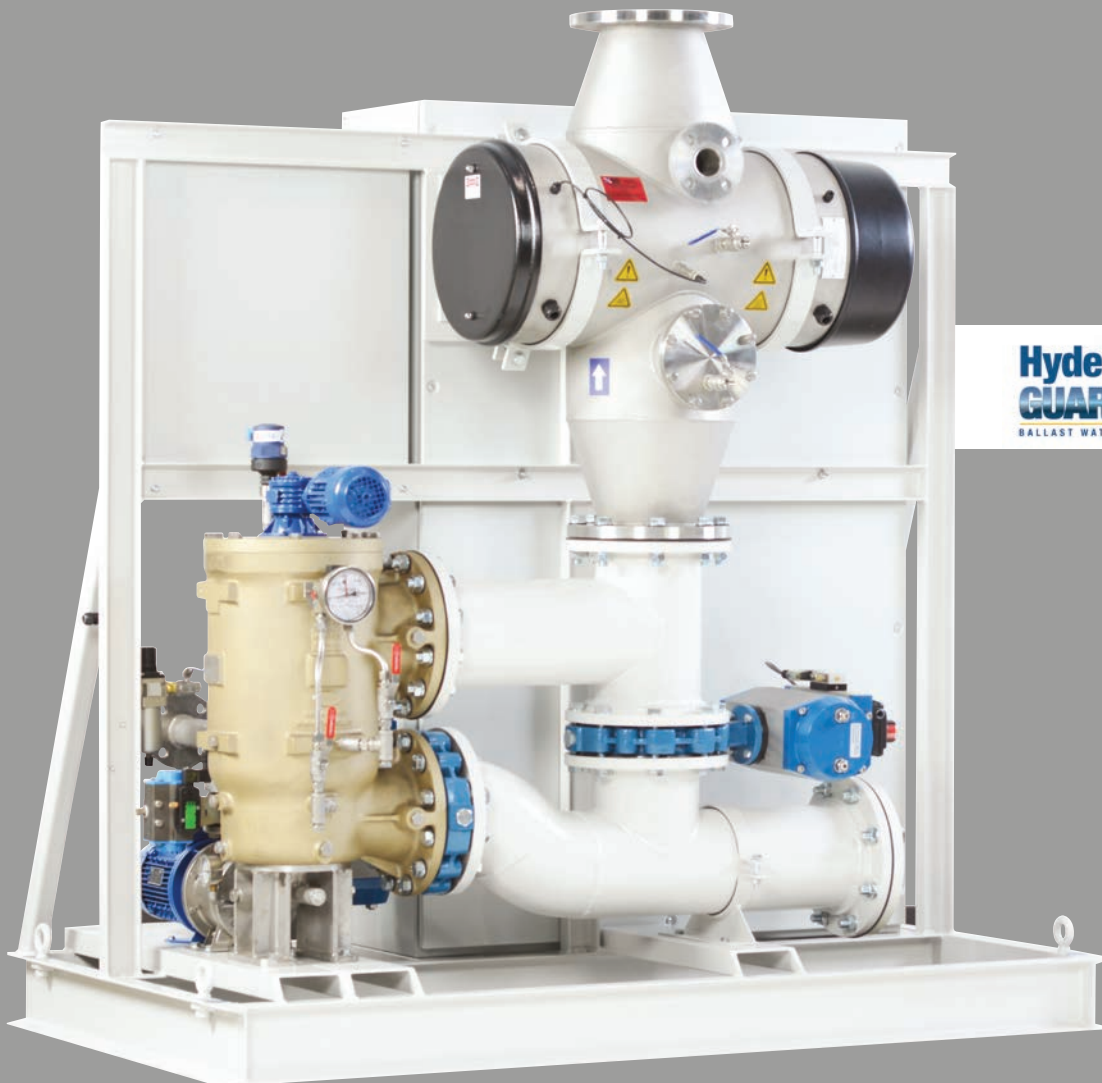
Perma-Pipe's Fuel Gard systems for LNG/NG applications are fully engineered and pre-fabricated in our ISO 9000 approved factory to the latest regulations mandated by maritime class societies. For each project Perma-Pipe will perform finite elements stress calculations taking into account thermal loads, ship cargo and interface with the supports. Thermal heat gain calculations on the bunker fuel piping will also be performed by the in-house engineering team of Perma-Pipe.

- All Stainless Construction
- Pre-Engineered & Pre-Fabricated
- Layout and Spool Piece Drawings
- All Maritime Class Approvals available



Ballast Water Treatment System

- Smallest foot print Skid mounted HG60-unit has the smallest foot print in the market
- Economic Low installation, operating and consumable costs
- Easy to use Simple (automatic) operation and minimal maintenance
- Proven partnership Large expertise in UV-technology
- Flexible Supplied as a skid-mounted or modular system
- Capacity range 60m³/hr. to 6000m³/hr.
- Easy to install Retrofit while in service with no downtime or dry docking
- Compatible Seamless integration with existing ballast system and pumps
- Chemical free No effect on coating



Hyde
GUARDIAN GOLD
BALLAST WATER TREATMENT SYSTEM

Automation

In accordance with our customer specifications, we designs and manufactures highly functional actuator systems for a wide range of vessel types. Our automation services include electric, hydraulic and pneumatic valve systems.

- Over 25000 actuated valves in service
- Product & Services included:
 - Digital control systems
 - Hydraulic power units
 - Solenoid and control cabinets
- Commissioning and field services



Marine Certified Valves in Stock

- All DIN/JIS/ANSI valves come from IACS members certified foundries and manufacturers
- Several in-house test benches for witness testing purposes by class surveyors
- Overboard valves will be delivered with 3.2 certificates
- Unique network of stocking locations in major marine ports from Vancouver, over Houston and Rotterdam to Singapore



RM Srl Unipersonale

**Registered and
Administrative Office**
Via Molo Giano
Varco Quadrio, snc
16128, Genova Porto GE, Italia

Headquarters Workshop
Via Zona Industriale, 12
54011 Aulla MS, Italia
+39 0187 1981452

Workshop USA
2000 SW 31st Ave
Hallandale Beach, Florida, USA

Workshop
Via Boettola Traversa Seconda, 17
19038 Sarzana SP, Italia

New China Branch
n. 4995 Boashan District,
Shanghai, China

Website
www.rmmarine.it

Email
info@rmmarine.it

Call us
+39 010 2518531
+39 0187 1981452

