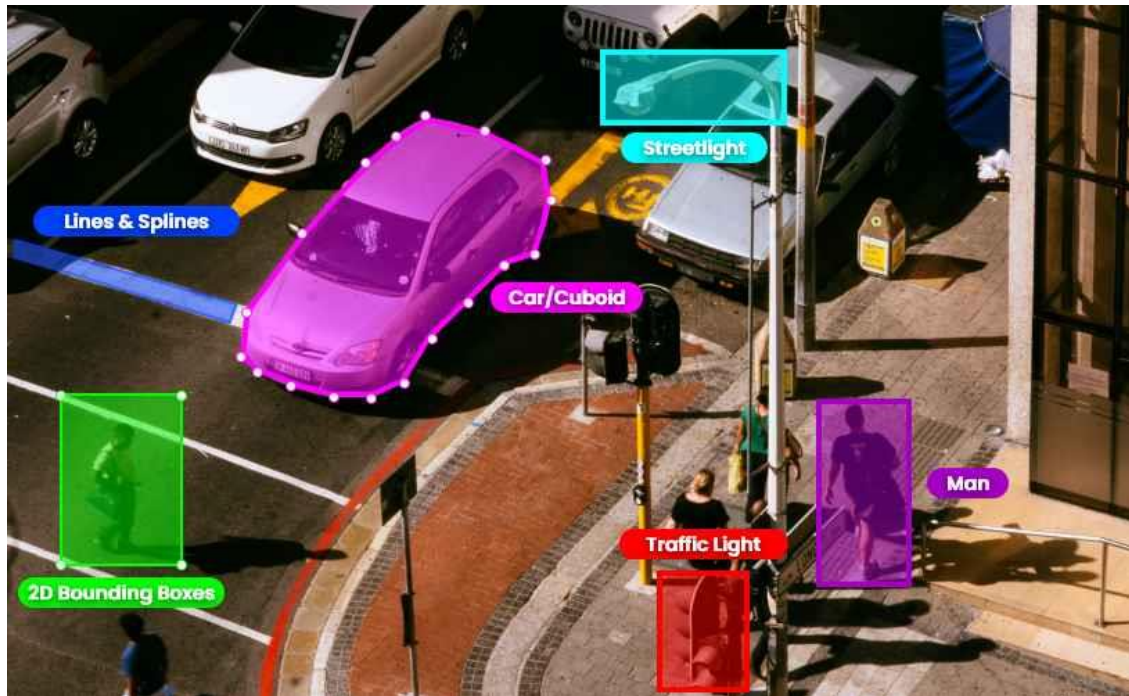


Data Annotation Tools for AI and ML



Data annotation tools for machine learning refer to using software for labeling data which is used in machine learning models. These tools have been developed by entities involved in data annotation. If you want to annotate data, you can approach imerit.net/data-annotation/ instead of using the tools. They provide human-labeled data for deploying ML applications.

There are many tools you can use for data annotation. The German researchers note that the CMS tools can be extended to handle both text and figures, and the combination of these two different domains will allow for an even greater level of accuracy in the results. This is due to the fact that human authors and other readers may be more likely to take note of things that are written in a language that is clearly written from the point of view of a human body. In contrast, when the same data is presented in a figure format, it is more likely that a machine learning algorithm will miss or misinterpret data points that are displayed in black and white.

The researchers of the study went so far as to state that the combination of these technologies can help a machine learn what is known as an 'artificial intelligence for humans' (ARTI). With this technology, a medical imaging data feed can be analyzed easily by a machine with the ability to extract the necessary information from textual material without having to spend too much time analyzing what it has captured. As we have seen previously, the ability to analyze data from multiple sources has led to developments in the field of genomics and NGS. Next, it

will be possible for a machine to process this data through an automatic system that is able to provide an accurate diagnosis. In fact, the CMS tools used to analyze this medical data are already set up to automatically detect patterns that are commonly associated with the human condition, such as pain and trauma. This is a huge benefit because the need for accurate diagnosis is essential in the treatment of both chronic and acute conditions.

The use of this software is especially important in the treatment of conditions such as diabetes and cardiac problems because the information needed to make these diagnoses can only be derived from a person's own observations. This is why many medical professionals have been employing these x-ray computed radiography machine tools to increase their diagnostic imaging workflow.

Contact us on:

<https://imerit.net/data-annotation/>

Socials:

<https://www.linkedin.com/company/imerit>

<https://www.youtube.com/channel/UCB4nBTeUkRQB9Nnck-N8gZQ>

<https://twitter.com/iMeritDigital>