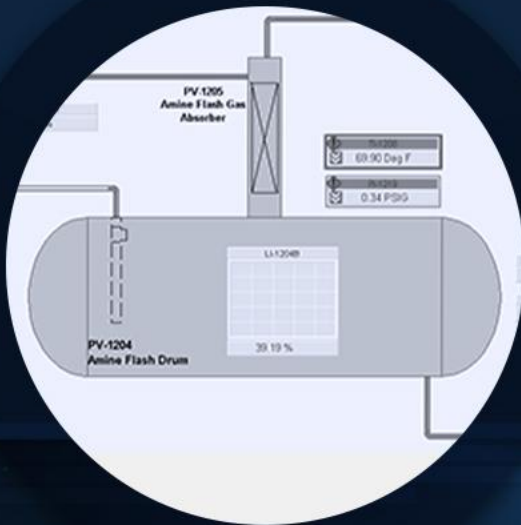




**INTUITIVE
TECHNOLOGIES
AND
SERVICES**



"In today's information filled world we find ourselves overwhelmed with endless information. It has revolutionized the way we look at the world and, in many cases, cluttered our decision making landscape to the point it leaves many wondering about the right path forward. Information is always important. However, as important is understanding what it all means. Redi Technologies focuses on the intuitive side of the business as well. Using our experience in decades on project work, we see intuitively past all of the endless data, and find the right solutions for our clients. Our long list of satisfied and repeat clients demonstrates they agree with that approach and are comfortable with a more "intuitive" project execution."

-Randy Kirkendoll, COO, Redi Technologies, LLC



THE REDI TECH WAY BEGINS WITH YOU

ABOUT US	1
OUR CORE VALUES	2
CONTROL SYSTEM ENGINEERING	3
SYSTEM INTEGRATION	3
ICS CYBERSECURITY	4
ROCKWELL AUTOMATION SERVICES	5-6
PROJECT MANAGEMENT	7
QUALITY MANAGEMENT	7
THE REDI TECH PROJECT STRATEGY	8



ABOUT US

Redi Technologies was formed in March of 2016. We provide project management, engineering, module build, construction, commissioning, startup, and operations on a broad range of installations. We are fascinated with technological developments and are partnered with other technology companies to bring our clients the best and latest technologies in our areas of expertise. These technologies include:

Our Technologies:

- Complete Project Management Services managing engineering, procurement, construction, commissioning, and startup
- Complete control system engineering from greenfield/brownfield to full installation, commissioning and startup
- Complete systems integration services with advanced programming capabilities for most process and utility industries
- Complete “Waste to Energy” process technologies (gasifiers) for turning waste streams (wood, landfill solid waste, tire rubber, food waste, and even sewage waste) to energy. We believe that this is the next great “evolution” of energy in the US and around the world. We provide full project EPC and operational services for these systems.
- Hydrocarbon Leak Detection systems
- Control System Cybersecurity Services



INDUSTRIES

- + Oil and Gas: Upstream, Midstream, Downstream
- + Pipeline Controls
- + Utilities (Power, Water, Wastewater)
- + Manufacturing Automation
- + Mining
- + Food and Beverage

OUR CORE VALUES

COMPETENCE

Bringing a clear vision of success and understanding of the steps needed to achieve the clients vision sets us apart from others. We have recognized expertise in our areas of service that helps our clients feel comfortable and in control of projects we execute. See our client recommendations.

TRUST

Redi Technologies, LLC believes that a client relationship built on trust is critical. We will tell you what we plan to do, how long it will take, and when it will be done. We will even tell you the bad news when you don't want to hear it. Bad news won't go away because you don't want to hear it. But we will also propose solutions on how to deal with issues as they arise. That engenders trust between companies.

EXPERIENCE

With decades of experience and dozens of major projects under our belts, we have the experience you need to feel confident you are in good hands. Let us show you why.

MANAGEMENT

All projects revolve around their scope, schedule, and budgets. And every project must balance these three aspects of the project management plan to achieve success. Our experience allows us to work with our clients to manage our projects around the key driver of a project to meet our client's expectations.

SAFETY

Safety is our #1 priority on all projects. Project work, construction, commissioning, and startup presents some of the most difficult safety challenges in a facilities lifetime. Because these activities represent a changing safety landscape daily in the field and in facilities, we are hawkish about staying on top of all activities to understand their impacts on the safety of all involved. As stated above, it is our #1 priority.

CONTROL SYSTEMS ENGINEERING

Control System Engineering in modern times is one of the more challenging disciplines today. With ever more specialization and retiring experienced control system engineering professionals, it is harder and harder to find knowledgeable controls engineering personal. Our people have in depth experience on a variety of platforms and processes. Our experience base allows us to provide the right solution and institutional knowledge around your specific project needs. Come and talk with us and let us show you we know your business and can provide the level of support you need.

SYSTEM INTEGRATION



We are very excited to present Bedrock Automation. Quite literally a "Revolution" in controller technology. Bedrock has embedded 21st century controller technology in an unbelievably powerful platform. Not only is it the most advanced controller technology on the planet, but it is the only industrial controller with intrinsic, built in cybersecurity. This system is redefining what an industrial control system is and can do. And it can be used for PLC, DCS, and SIS functionality right out of the box!



Redi Technologies are former Rockwell Automation employees with many years of hands on experience with many of the Rockwell Automation's most popular products in a variety of processes and applications. Because this work involved all aspects of plant operations, our experience includes configuring and commissioning of variable frequency drives, MCC's, standalone starters, heater controllers, compressors, generators, medium voltage drive and starter, etc. We provide one stop shopping for most applications and coordinate with equipment vendors to provide clear guidance on system operations.

ICS CYBERSECURITY

ICS Cybersecurity is a complex subject. And we have the expertise to provide you with the skills, tools, and plans to keep you protected from the ever-growing Operational Technology (OT) cybersecurity threat. Allow us to work with your cybersecurity team to create a meaningful protection plan for you and your specific system needs. We can take you from the ground floor and provide a comprehensive plan to get your system protected with the latest hardware, software, and cyber security processes. Let us help you sleep better at night knowing you have the protection you need.



Inductive Automation is one of the fastest growing HMI and SCADA system providers on the market today. Providing a platform that has a “Web Based Deployment”, online training, a licensing plan that is fair and reasonably priced, and being Java based, allows the “Ignition” product to be deployed on ANY operating system, and with drivers to talk to virtually any control platform, Inductive Automation’s Ignition product is taking the HMI/SCADA industry by storm. Let us show you why.



Wonderware, Citect, and ScadaPack are a few other examples of systems we support.

Rockwell Automation

REDI TECHNOLOGIES, LLC IS A CERTIFIED ROCKWELL AUTOMATION SYSTEMS INTEGRATION PARTNER

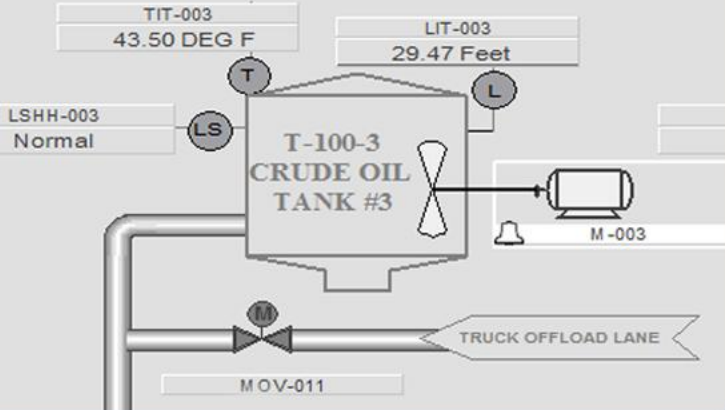
As former Rockwell Automation employees with decades of Rockwell Automation and Allen Bradley hands on experience, we bring to our projects extensive know how and institutional knowledge around these technologies. This background allows us to work with older systems, comfortably providing the support you need on legacy systems while at the same time having the training and knowledge to implement the latest Rockwell Automation tools such as the PlantPAX DCS system. It also allows us to integrate the old and the new to create a seamlessly operating system meeting today's demanding requirements.

REDI TECHNOLOGIES, LLC HAS EXTENSIVE EXPERIENCE IN:

- Intelligent or simple motor controls
- Variable Frequency Drives/DC Drives
- Communications Protocols of all kinds
- PLC's of all ages and sizes
- Programming
- Server setup and configuration
- Full System Engineering & Design
- Startup/Commissioning
- Operations
- Field or On Call Support

PlantPax

Process Automation System



OBSOLESCENCE AND UPGRADES

Over time controllers, hardware, and even software can become obsolete and may require an upgrade. Redi Technologies, LLC provides obsolescence reviews to determine controller and system long term viability and support in the future at your facility. Redi Technologies, LLC will work with you in determining the correct upgrade strategy necessary to keep downtime to a minimum and keep your facility running efficiently and smoothly during the transition.

Lifecycle Status

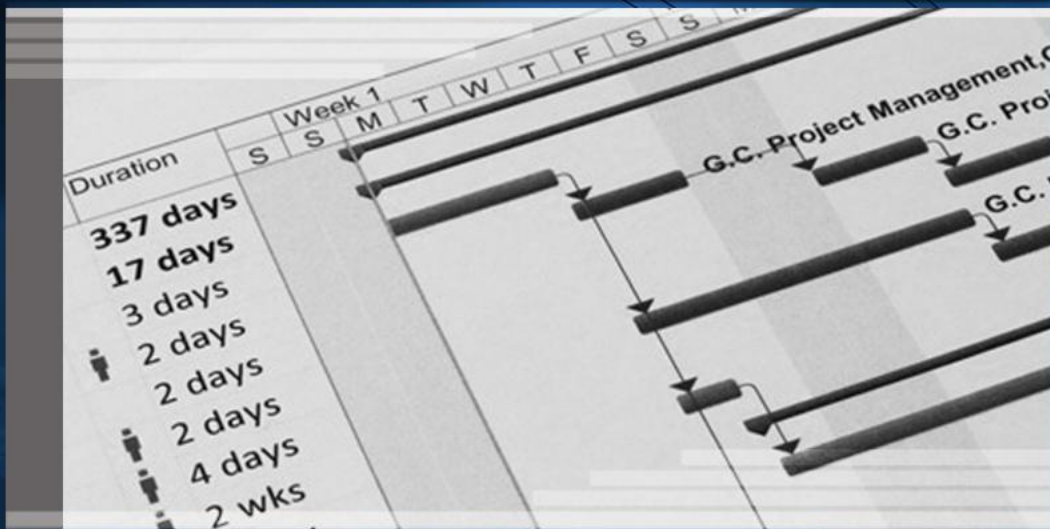
- **Active:** Most current offering within a product category.
- **Active Mature:** Product is fully supported, but a newer product or family exists. Gain value by migrating.
- **End of Life:** Discontinued date announced - actively execute migrations and last time buys. Product generally orderable until the discontinued date.¹
- **Discontinued:** New product no longer manufactured or procured.² Repair/exchange services may be available.

¹Outages on specific items may occur prior to the Discontinued date.

²Limited stock may be available in run-out mode, regionally.

PROJECT MANAGEMENT

The key to successful project management is knowledgeable, competent oversight of the project scope, schedule, and budget. This capability combined with close ties to our client's project management and operations teams means our projects are closely synchronized with client expectations from the start to the finish of the project. With solid management of these three planks of the project and watchful change management, we assure that there are no surprises for our clients. This is key to a successful project. We meld these core values into a coherent Project Execution Plan (based on PMI standards) that provides a comprehensive project management strategy for all of our projects.

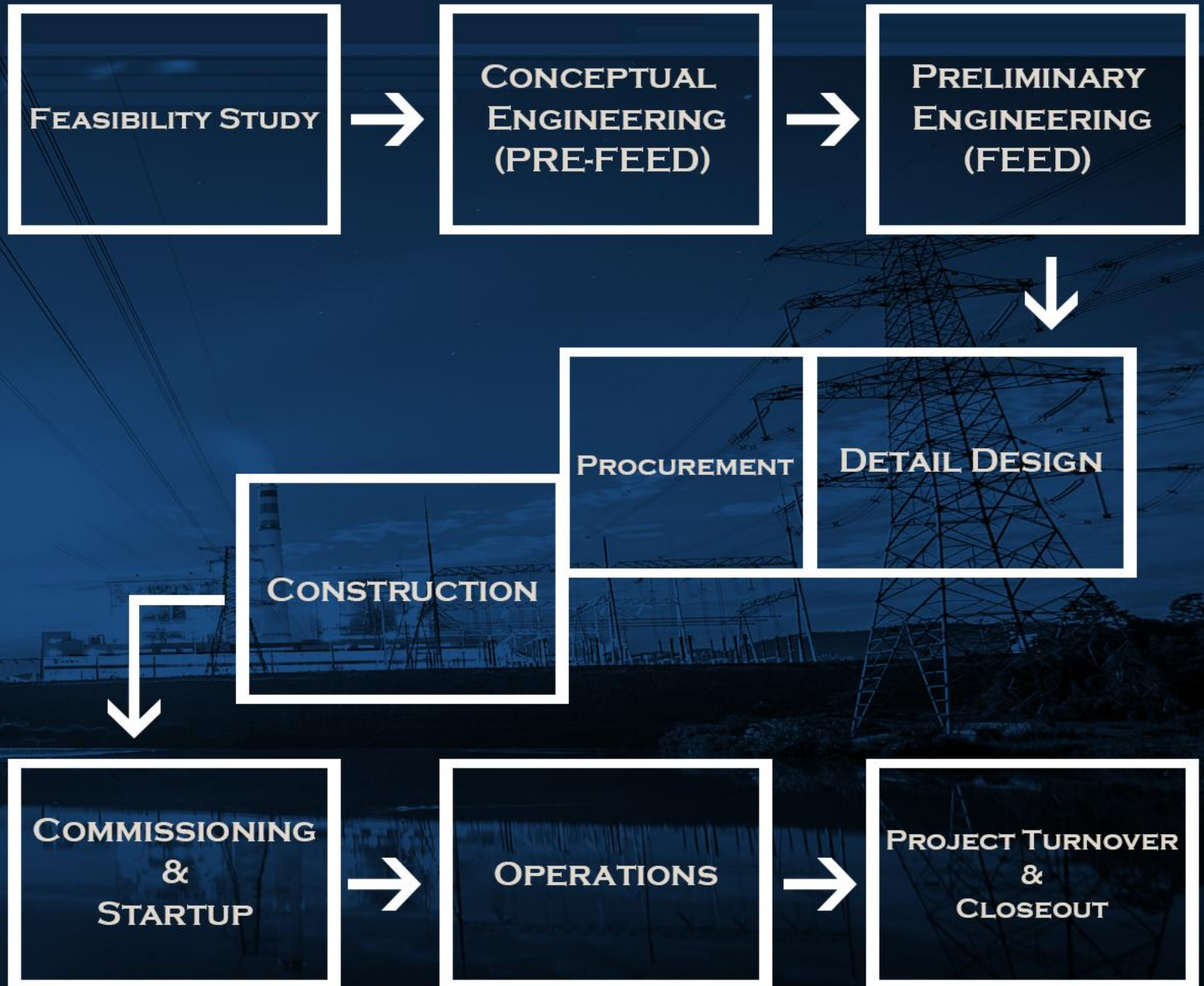


QUALITY MANAGEMENT

Our quality management program was developed by a team of senior engineering managers with decades of experience with systems engineering. Our processes and procedures were developed with a rock-solid understanding of how to do the job right the first time. We have captured these processes in the Redi Technologies Design Engineering Manual (DEM) that provides coherent guidance to the engineering process for all phases of a project.

THE REDI TECH PROJECT STRATEGY

Redi Technologies, LLC supports all phases of process and project development. Whether a client is considering a greenfield project with all phases of project development from Feasibility Studies all the way through Commissioning, Startup, and Operations or a project more developed (from Preliminary Engineering or FEED (Front End Engineering & Design) through completion); we have the complete road map to get you there. Our staff of senior engineers and managers have the breadth and depth of experience to address all issues of concern on a project and create a project plan that will meet any need.





"REDI TECHNOLOGIES IS PROUD TO BE A LEADING EDGE TECHNOLOGY PROVIDER. DECADES OF EXPERIENCE, A CLEAR VISION OF HOW PROJECTS SHOULD BE EXECUTED, AND CLOSE AND TRUSTED RELATIONSHIPS WITH OUR CLIENTS ALLOWS US TO CREATE THE SUCCESSES THAT ALL PEOPLE ARE LOOKING FOR. THIS VISION, ALONG WITH WHAT WE BELIEVE IS AN UNDER-APPRECIATED TALENT, INTUITION, IS ALLOWING US TO BUILD A COMPANY THAT IS SUCCESSFUL YET PROFOUNDLY HUMAN. PLEASE ALLOW US TO SHOW YOU WHY WE BELIEVE CLEARING AWAY THE NOISE OF OUR BUSY WORLD WITH A CLEAR, BALANCED VISION IS NEEDED NOW AND WILL BE LONG INTO THE FUTURE"

THANKS FOR READING,

A handwritten signature in white ink, appearing to read "Randy Kirkendoll", positioned over a background image of two large industrial cooling towers.

RANDY KIRKENDOLL, PE, GSEC
CHIEF OPERATING OFFICER, REDI TECHNOLOGIES, LLC

CONTACT US

PO Box 4866
Parker, CO 80134
720-502-4084
rkirkendoll@reditechllc.com
www.reditechllc.com

