

Let's renew the European Parliament's Social Economy Intergroup!

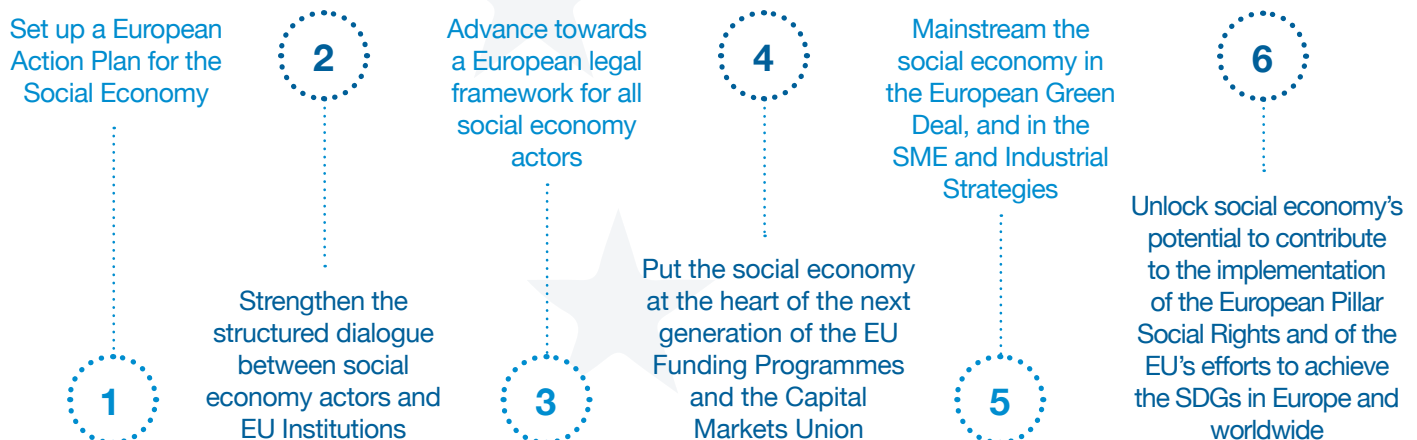
Created in 1990 and continuously active since then, the Social Economy Intergroup serves to ensure a permanent dialogue between the European Parliament, the other EU Institutions, Member States and the social economy. As well as to include these business models into the legislative and non-legislative work of the Parliament.

A SOLID TRACK RECORD

In the last EU mandate, the Social Economy Intergroup served as a driver of EU policies and initiatives boosting the social economy, these are some of its achievements:

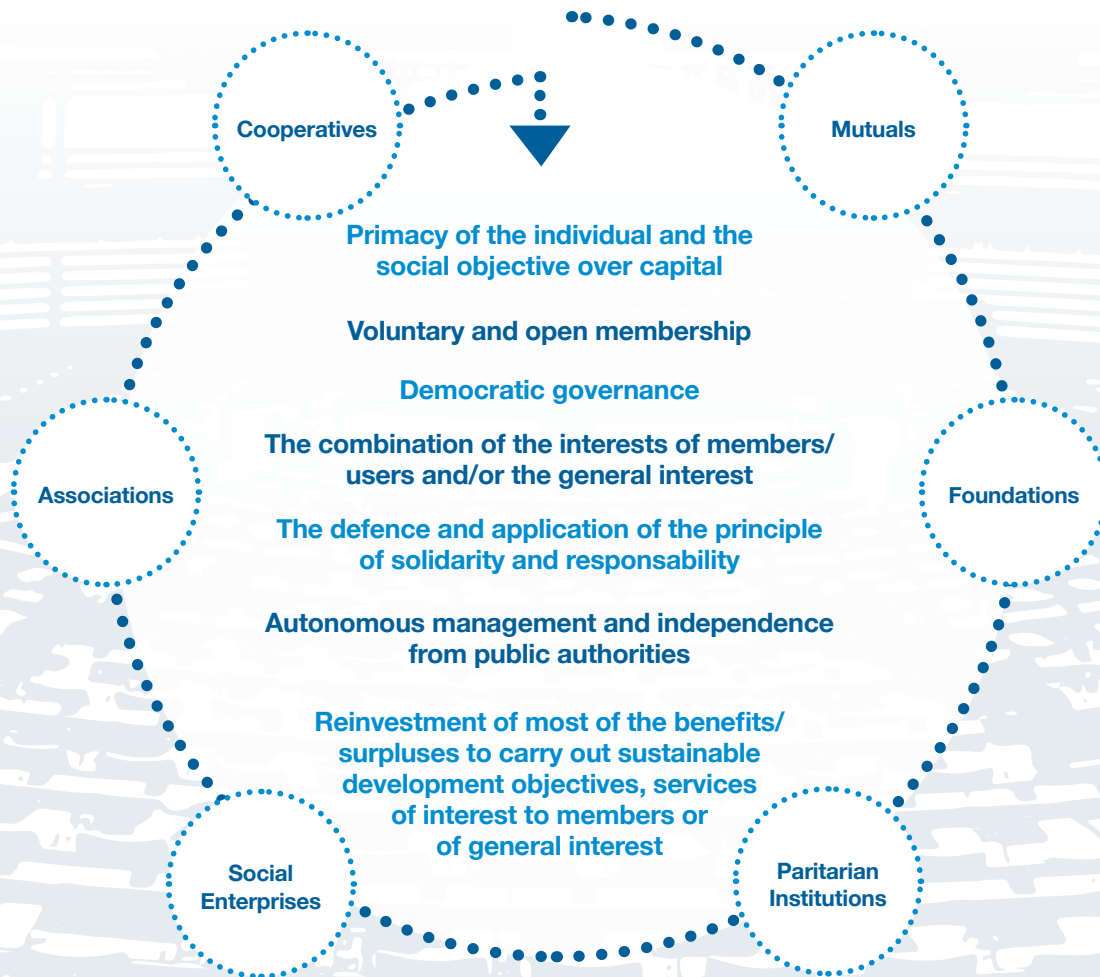
- **80 MEPs**- belonging to 6 political groups.
- **15 public hearings**- attended by more than 1,400 people.
- **6 high level meetings**- with EU leaders.
- **1 Plenary debate**- on a European Action Plan for the Social Economy.
- **2 legislative resolutions**- In which social economy was mainstreamed (ESF+ and InvestEU).
- **3 European Parliament reports**- In which social economy was included (European Pillar of Social Rights; Single Market Strategy; and Social entrepreneurship and social innovation in the fight against unemployment).
- **Council Conclusions on Social Economy**- The Intergroup strongly supported the adoption of the historic Council Conclusions on Social Economy in December 2015.
- **Strong Cooperation with the Commission**- Start-up and Scale Up Initiative and actions and strategy for the social economy and social enterprises.

A POLICY AGENDA FOR A SUSTAINABLE FUTURE OF EUROPE



SOCIAL ECONOMY, A EUROPEAN SUCCESS STORY

The social economy is an essential part of the European economic and social landscape. In the European Union, there are **2.8 million social economy enterprises** and organisations that **employ 13.6 million people** and account for **8% of the EU's GDP**. It is formed by a diversity of enterprises and organisations that are united by common values and features:



ABOUT SOCIAL ECONOMY EUROPE

Social Economy Europe (SEE) is the voice of the 2.8 million social economy enterprises and organisations in the European Union. Since its creation in 2000 (as CEP-CMAF) it is the secretariat of the Social Economy Intergroup.

SEE MEMBERS



With the support of:

