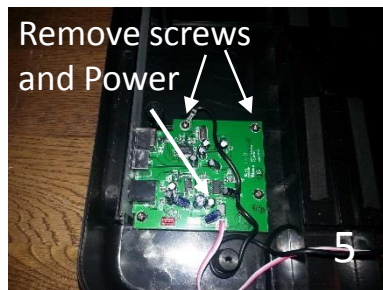
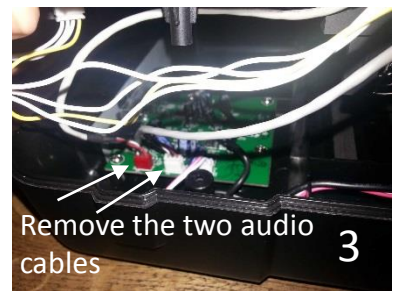
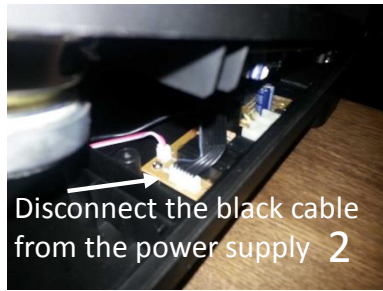
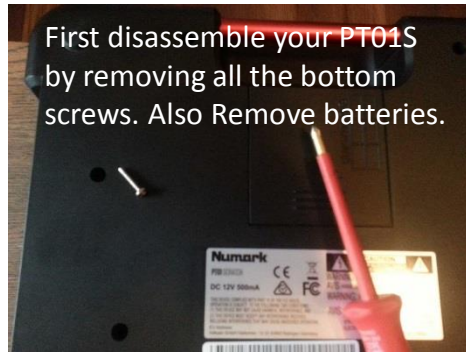


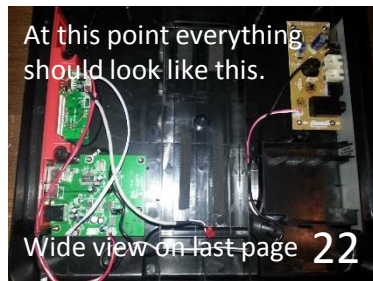
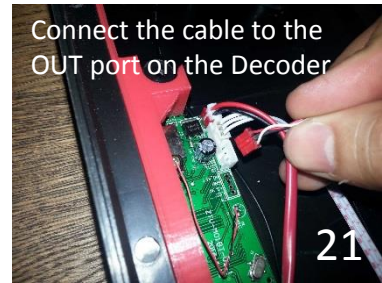
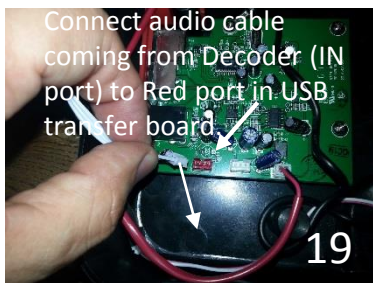
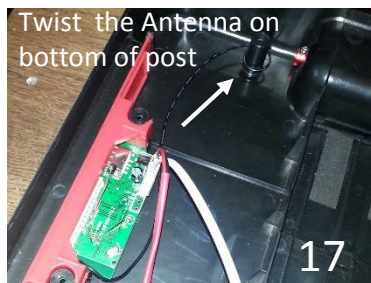
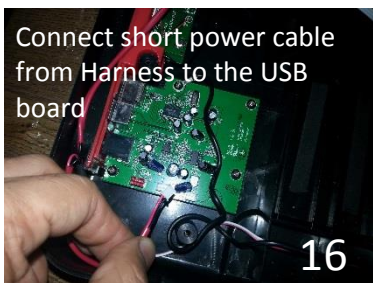
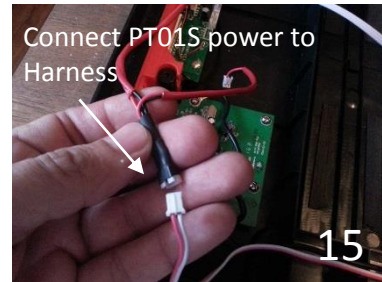
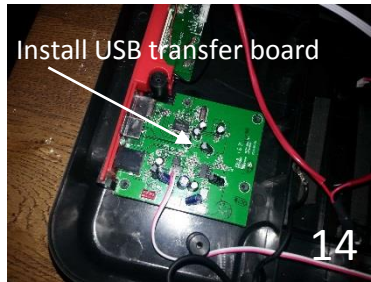
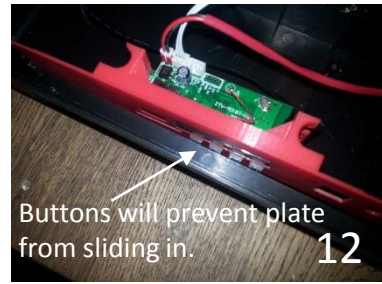
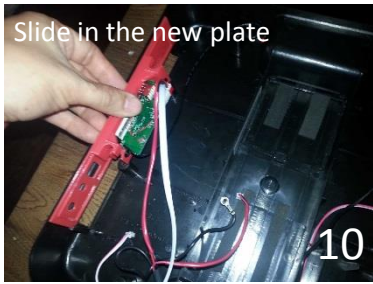


Installation instructions

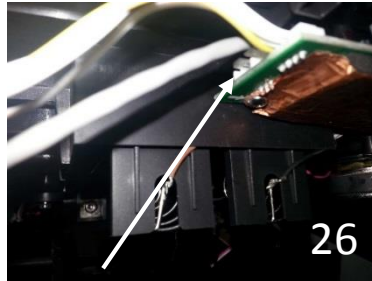
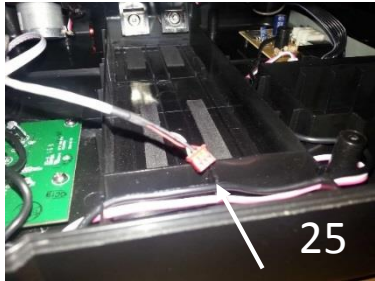
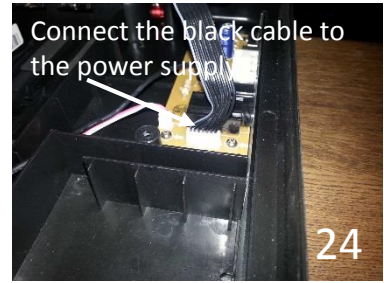
SD Kit on a PT01S

(v1.0 12-16-2016)

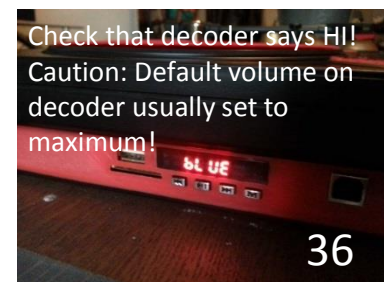
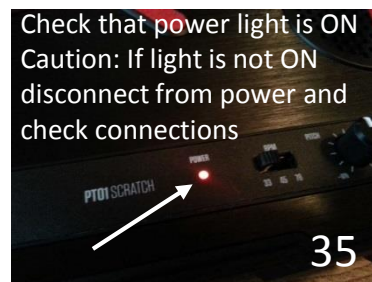
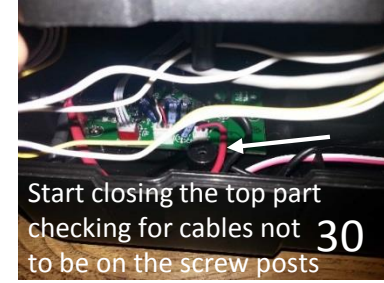
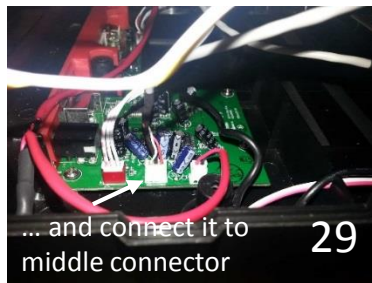




Note: This ground was added later after the Pre-Order phase, it is only necessary to help keep the Bluetooth signal noise to a minimum, if your decoder has no excessive signal noise when using the Bluetooth music option then it is not necessary. If this cable is missing from your decoder please contact us.



Take the other end of the audio cable with Red connector and connect it to the sound board of the PT01S



Extra Information

To slide plate create a GAP so the buttons can slide in.

We recommend pulling the top part with your thumb and the rest of the fingers in the bottom of the plastic then just pull a little bit opposite to the plate giving a little space or gap so the buttons can clear the plastic. Jiggle the plate a little if necessary.



Wide view of installation

