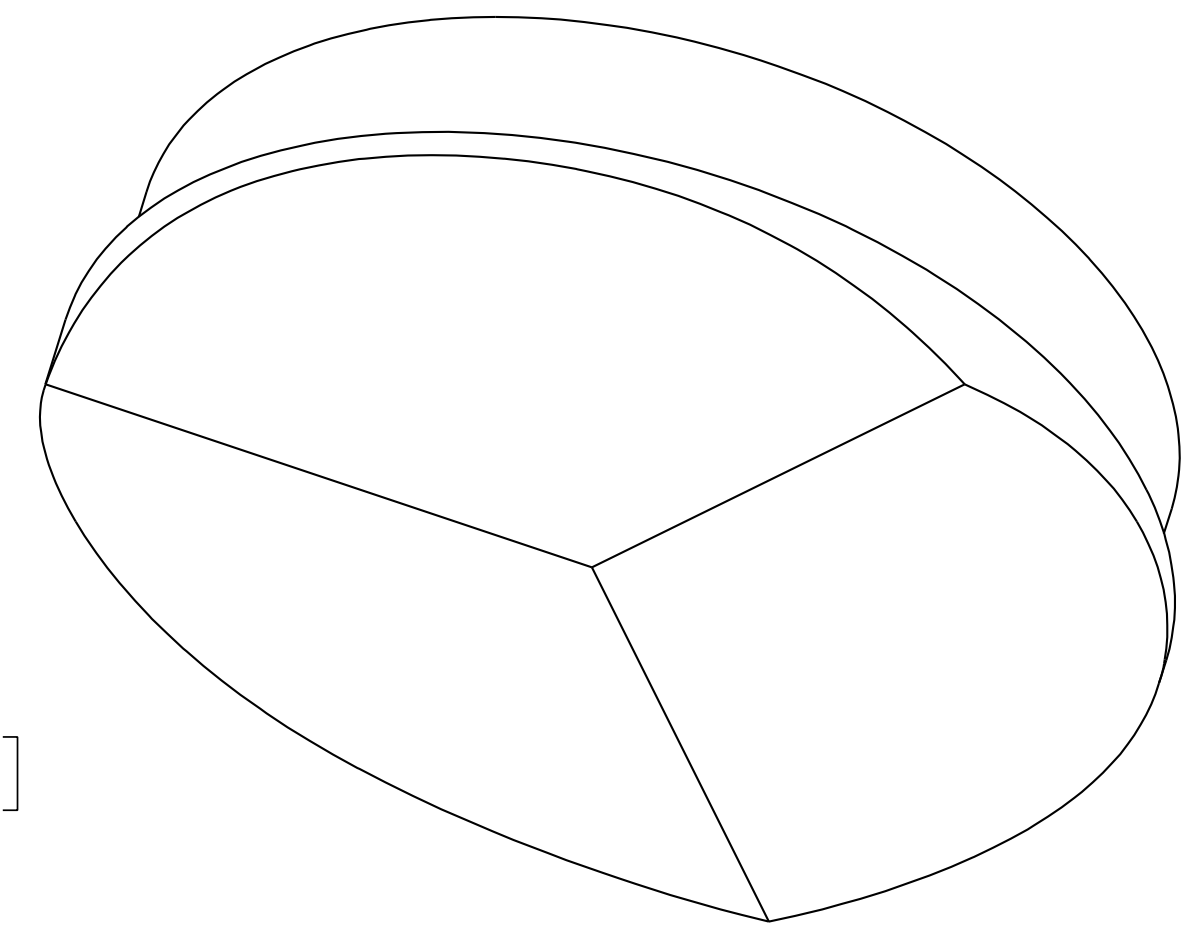
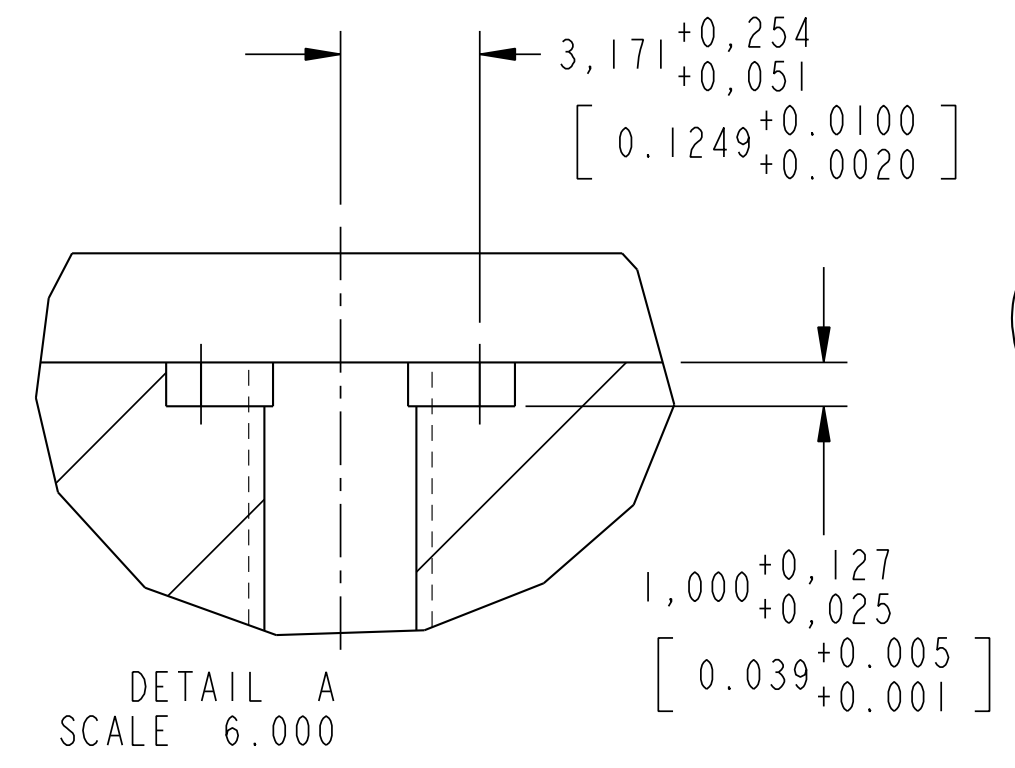
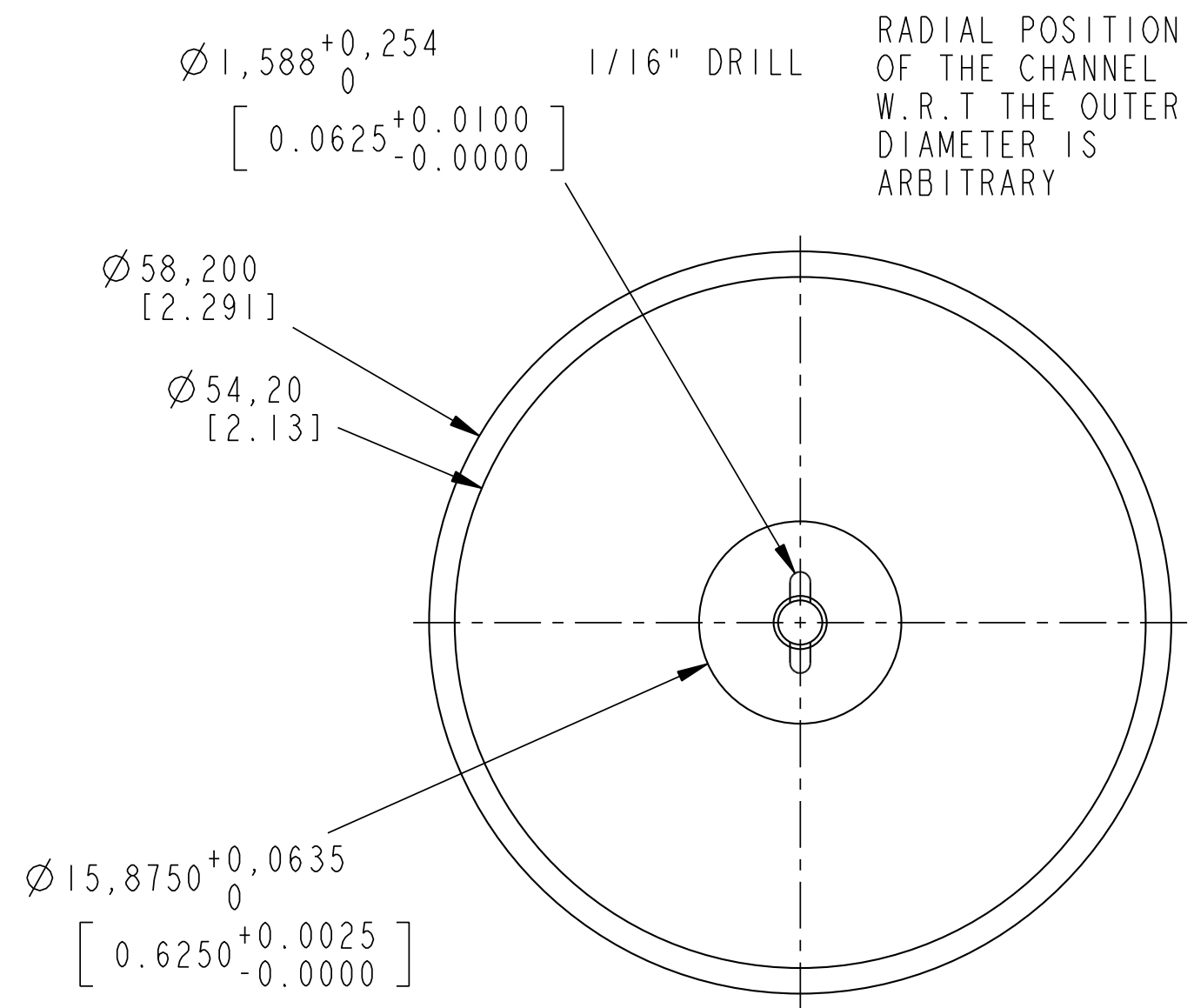
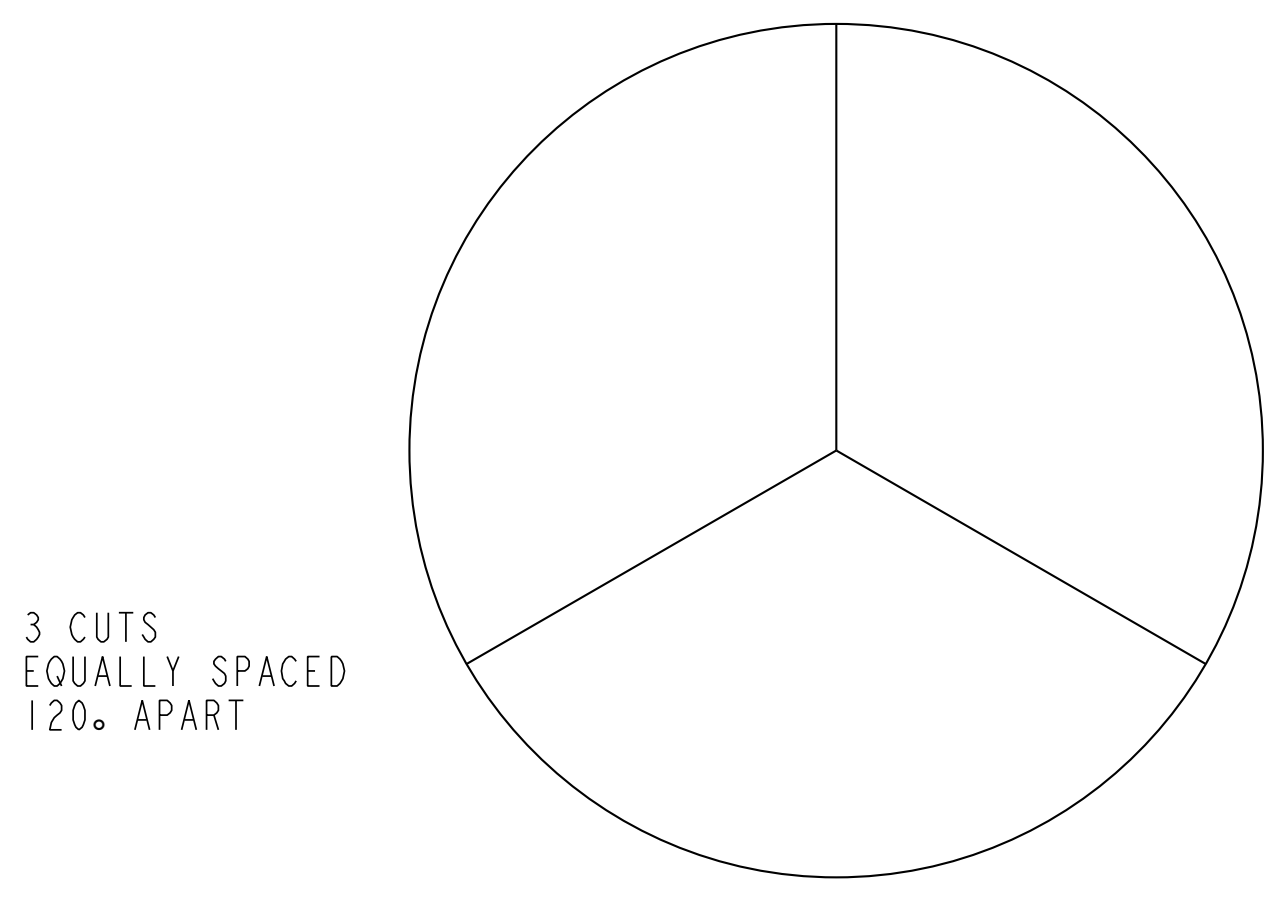
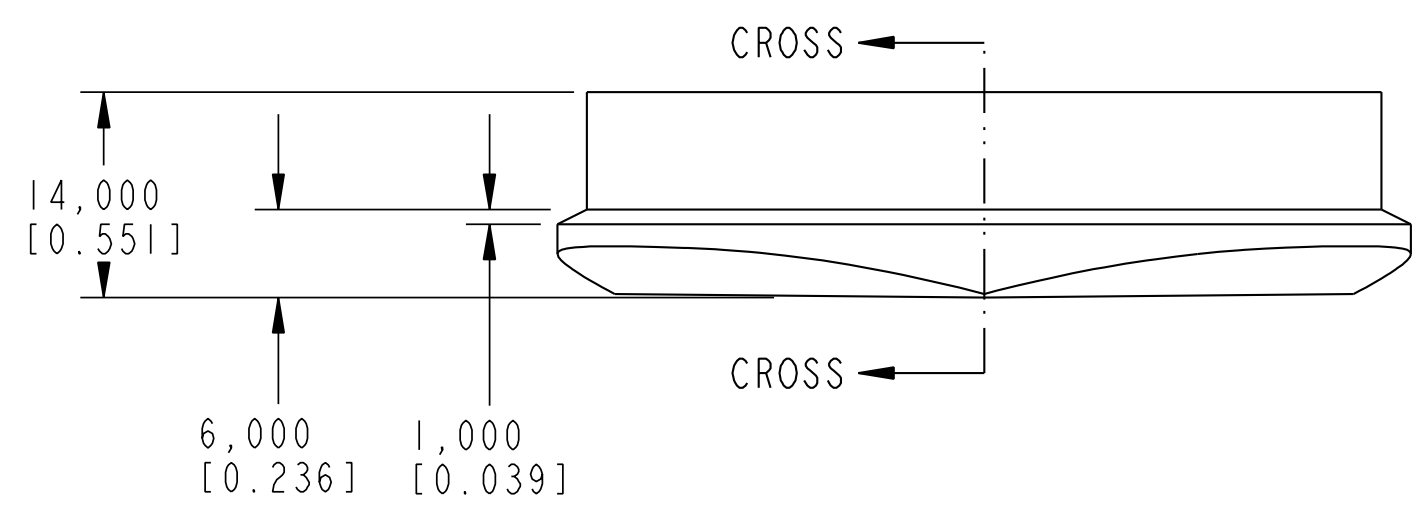
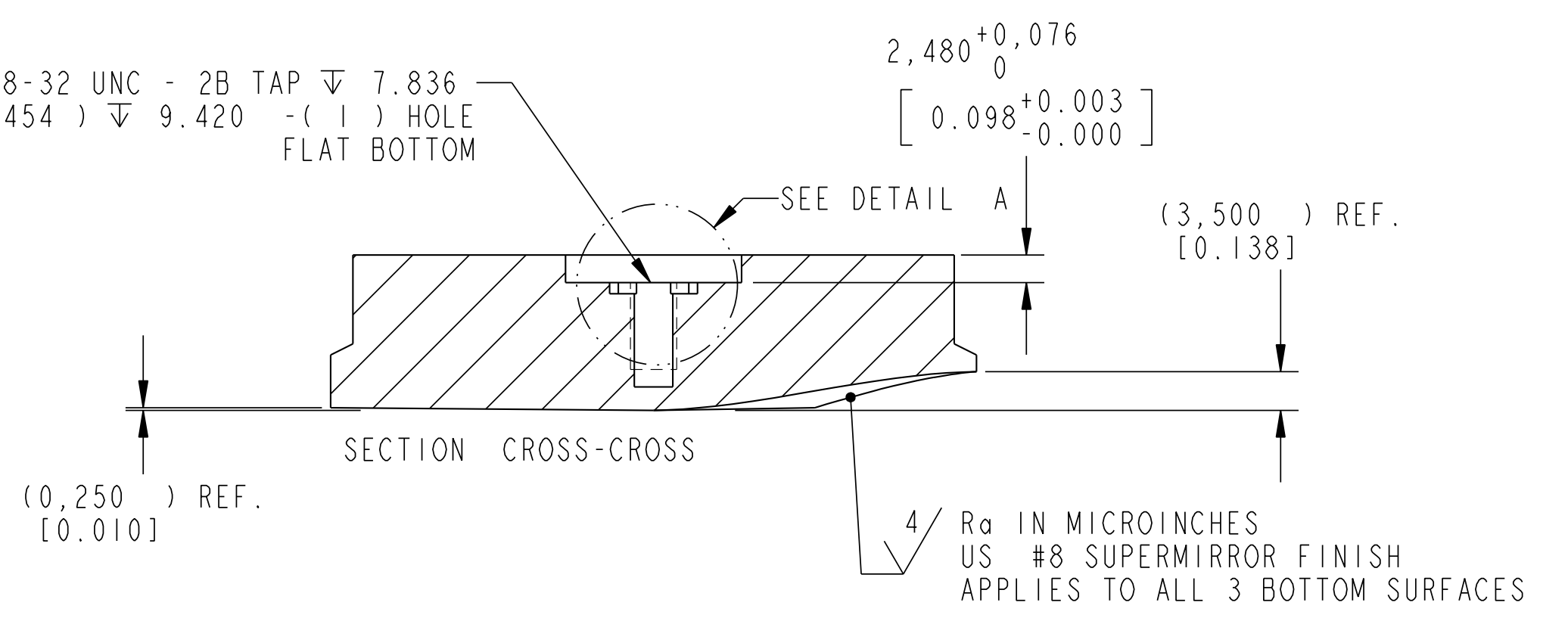


REVISIONS			
REV	BY	DATE	NOTES
I	MMI	11/18/19	INITIAL RELEASE



8-32 UNC - 2B TAP ∇ 7.836
 #29 DRILL (3.454) ∇ 9.420 - (1) HOLE
 FLAT BOTTOM



NOTES:
 UNLESS OTHERWISE SPECIFIED
 TOLERANCES ARE:
 .X = ± 0.5 mm
 .XX = ± 0.30 mm
 .XXX = ± 0.100 mm
 ANGLES = $0^\circ \pm 30'$

PRIMARY UNITS IN MILLIMETERS
 [SECONDARY UNITS IN INCHES]
 BREAK ALL EDGES - MAX CORNER RADIUS 0.30 mm

MATERIAL: 304 SS

Cypress Morrisville, NC

PART

58_3_DISTRIB_FEMALE

SIZE	FSCM NO.	DRAWING NO.
C		1

SCALE 2.000 SHEET 1