



## ELECTRIC LUMINARY BAG SET (10 COUNT)



[www.elflogic.com](http://www.elflogic.com)

## PARTS LIST

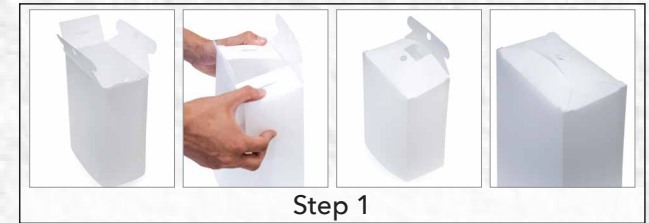


- A - 10 plastic foldable boxes
- B - 10 plastic water containers
- C - 10 plastic stakes
- D - 10 plastic water container stoppers
- E - String of lights



[www.elflogic.com](http://www.elflogic.com)

## INSTRUCTIONS



- STEP 1** Set up the plastic foldable boxes. Crease each corner so it maintains its shape. On the bottom, fold in the two smaller flaps and then fold the larger flaps on top and insert the tabs in the small slits. Once constructed, place the boxes approximately 3 feet from each other in the desired location.
- STEP 2** If you are placing the luminary bags in soft ground, place a stake into the bottom of each bag and push the stake through the bottom of the bag into the ground, to secure bags in place.
- STEP 3** Fill the plastic water containers with water. Place one container in each luminary box.
- STEP 4** Insert one light in the hole of each luminary box. Connect the electric plug to an outlet and lights will turn on.

[www.elflogic.com](http://www.elflogic.com)

# IMPORTANT SAFETY INSTRUCTIONS



Welcome to Elf Logic®

## INNOVATIVE HOLIDAY PRODUCTS

**WHEN USING ELECTRICAL PRODUCTS, BASIC PRECAUTIONS SHOULD ALWAYS BE FOLLOWED INCLUDING:**

### Read and follow all safety instructions

1. When products are used in outdoor applications, connect the product to a Ground Fault Circuit Interrupting (GFCI) outlet. If one is not provided, contact a qualified electrician for proper installation.
2. This is a seasonal use product and is not intended for permanent installation or use.
3. Do not mount or place near gas or electric heaters, fireplaces, candles or other similar sources of heat.
4. Do not secure the wiring of the product with staples or nails, or place on sharp hooks or nails.
5. Do not let lights rest on the supply cord or on any wire.
6. Unplug the product when leaving the house, when retiring for the night, or if left unattended.
7. **CAUTION** - This is an electric product – not a toy! To avoid risk of fire, burns, personal injury and electric shock it should not be played with or placed where small children can reach it.
8. Do not use this product, other than for its intended use.
9. Do not cover the product with cloth, paper or any material not part of the product when in use.

10. If the plug does not fit fully in the outlet, reverse the plug. If it still does not fit, contact a qualified electrician. Do not use with an extension cord unless plug can be fully inserted. Do not alter or replace the plug.
11. Always unplug this product before installing or replacing lights.
12. Read and follow all instructions that are on the product or provided with the product.
13. Save these instructions.
14. **NOTE:** Do not plug lights into power until assembly is complete!

### USE AND CARE INSTRUCTIONS

Before using or reusing, inspect product carefully. Discard any products that have cut, damaged, or frayed wire insulation or cords, cracks in the light holders or enclosures, loose connections, or exposed copper wire. When storing the product, carefully remove the product from wherever it is placed, including trees, branches, or bushes, to avoid any undue strain or stress on the product conductors, connections, and wires. When not in use, store neatly in a cool, dry location protected from sunlight.

For more information please visit [www.elflogic.com](http://www.elflogic.com).