

**JIM PHELPS**  
**NOVATO, CALIFORNIA**

[jimphelps56@gmail.com](mailto:jimphelps56@gmail.com)

September 15, 2015

County of Marin Supervisor Kathrin Sears  
Chair, Marin Clean Energy – Community Choice Aggregation  
1125 Tamalpais Avenue  
San Rafael, CA 94901

Subject: MCE's (stealth) Purchases of Coal and Nuclear Power

Supervisor Sears:

A bedrock claim of MCE is that it does not purchase coal or nuclear power.<sup>1, 2, 3, 4</sup> However, MCE's recent Preliminary Annual 33% RPS Compliance Report to the CPUC **reveals that MCE does indeed pay for coal and nuclear power imports into California** (see attached e-Tag receipts).

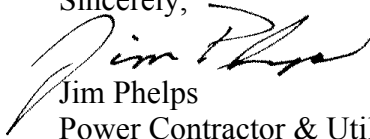
- MCE has no enforced coal policy. While your energy supplier Shell Oil may be arranging your coal imports, it is disingenuous for MCE to advertise a *no coal, no nuclear* policy. MCE's contract with Shell includes *no coal, no nuclear* language. If MCE treats Shell Oil as a credible disconnect MCE undermines everything it says about itself.
- MCE pays for nuclear power from Arizona's Palo Verde nuclear plant when MCE's Resolution No. 2011-09 calls for the decommissioning of California's nuclear plants. Doesn't MCE's behind-the-scenes support of nuclear power discredit its *no nuclear* policy and its public declarations rejecting nuclear?



MCE's senior staff and MCE's primary consultants' (Pacific Energy Advisors) acceptance of the above activities discredits MCE. Your "policies," unchecked, can perpetuate a belief within MCE that MCE is doing everything green. This can be politically problematic to the point where MCE is unable to see, or unwilling to acknowledge, its own deception.

I urge you to examine MCE's actions and to immediately cease importing all coal or nuclear energy.

Sincerely,



Jim Phelps  
Power Contractor & Utility Rate Analyst  
attachments (2)

<sup>1</sup> MCE's Annual Integrated Resource Plan: *MCE policy prohibits unit-specific purchases from coal or nuclear generation facilities.*

<sup>2</sup> Justin Kudo, MCE Manager of Account Services email to Jim Phelps, January 7, 2013 5:03 PM: *Nuclear energy (though MCE does not specifically procure for nuclear energy.*

<sup>3</sup> Can Boulder Learn from Marin? text below video link: *While avoiding coal and nuclear power, Marin Clean Energy allows electric consumers to choose non-polluting renewable energy,* <https://vimeo.com/27167275>

<sup>4</sup> Marin IJ Marin Voice, May 30, 2015 "Marin Clean Energy – Investing in our Environment" by Bruce Ackerman: *MCE uses absolutely no nuclear;* <http://www.mariniij.com/opinion/20150530/marin-voice-marin-clean-energy-x2014-investing-in-our-environment>

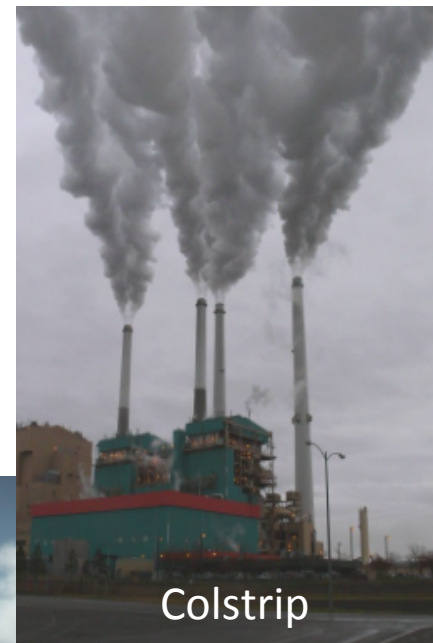
# MCE's "clean" delivered energy (coal & nuclear)



Boardman



San Juan



Colstrip



Centralia



Navajo



Cholla



Palo Verde

**MCE's 2014 RPS Compliance Report's Hourly e-Tag Summary (starts on p. 20 of 34)**

**Issued 3-Sep-15**

<u>RPS Compliance Report Location</u>	<u>e-Tag I.D.</u>	<u>Power Plant Generator Name</u>	<u>Type</u>	<u>Location</u>	<u>Megawatt- hours</u>	<u>Environmental Comments</u>
page 20 of 34	BPAT_CORPW0010995_CISO	Centralia	coal	Washington	200	MCE claims it does not buy coal resources <a href="http://www.columbian.com/news/2010/apr/25/sierra-club-organizes-effort-to-close-coal-fired-p/">http://www.columbian.com/news/2010/apr/25/sierra-club-organizes-effort-to-close-coal-fired-p/</a>
page 20 of 34	BPAT_CORPW0011071_CISO	Centralia	coal	Washington	400	
page 21 of 34	BPAT_CORPW3508499_CISO	Centralia	coal	Washington	200	Sierra Club launched effort to close plant by 2015 <a href="http://www.psr.org/chapters/washington/enviro-health/climate-change/coal-issues-in-wa.html">http://www.psr.org/chapters/washington/enviro-health/climate-change/coal-issues-in-wa.html</a>
page 21 of 34	BPAT_CORPW3508614_CISO	Centralia	coal	Washington	400	
page 22 of 34	BPAT_PPMIRTIR84832_CISO	Centralia	coal	Washington	960	"the largest single source of global warming pollution in our state (Washington)"
page 23 of 34	BPAT_PPMIRTIR86235_CISO	Boardman	coal	Oregon	42	<a href="http://oregon2.sierraclub.org/chapter/clean-energy">http://oregon2.sierraclub.org/chapter/clean-energy</a>
		Boardman	coal	Oregon		"responsible for accelerating global climate change."
Page 23 of 34	NWMT_PPMIRTIR85319_CISO	Colstrip	coal	Montana	55	<a href="http://www.opb.org/news/article/sierra-club-files-lawsuit-against-montana-coal-pla/">http://www.opb.org/news/article/sierra-club-files-lawsuit-against-montana-coal-pla/</a>
Page 23 of 34	NWMT_PPMIRTIR85327_CISO	Colstrip	coal	Montana	800	Sierra Club filed lawsuit for Clean Act violations
Page 23 of 34	NWMT_PPMIRTIR85330_CISO	Colstrip	coal	Montana	400	second largest coal plant west of Mississippi
Page 27 of 34	TEPC_CORPW0260540_CISO	San Juan	coal	New Mexico	1,392	<a href="http://www.wildearthguardians.org/site/DocServer/San_Juan_Generating_Station_Fact_Sheet.pdf?docID=1342">http://www.wildearthguardians.org/site/DocServer/San_Juan_Generating_Station_Fact_Sheet.pdf?docID=1342</a>
Page 27 of 34	TEPC_CORPW0261401_CISO	San Juan	coal	New Mexico	1,392	"A major health threat"
Page 27 of 34	TEPC_CORPW0261585_CISO	San Juan	coal	New Mexico	1,392	"releases more nitrogen oxide than 940,000 cars."
Page 27 of 34	TEPC_CORPW0262437_CISO	San Juan	coal	New Mexico	1,392	"poses myriad health risks"
Page 27 of 34	TEPC_CORPW0262607_CISO	San Juan	coal	New Mexico	1,392	"contributes to 33 premature deaths; 600 asthma attacks"
Page 27 of 34	TEPC_CORPW0263272_CISO	San Juan	coal	New Mexico	1,392	"31 asthma-related emergency room visits"
Page 27 of 34	TEPC_CORPW0263479_CISO	San Juan	coal	New Mexico	1,028	"13 million tons of CO2 emitted each year"

Jim Phelps

**MCE's 2014 RPS Compliance Report's Hourly e-Tag Summary (starts on p. 20 of 34)**


**Issued 3-Sep-15**

<u>RPS Compliance Report Location</u>	<u>e-Tag I.D.</u>	<u>Power Plant Generator Name</u>	<u>Type</u>	<u>Location</u>	<u>Megawatt- hours</u>	<u>Environmental Comments</u>
Page 27 of 34	TEPC_CORPW0263707_CISO	San Juan	coal	New Mexico	723	"191495 pounds of other poisons emitted into air each year." <a href="http://action.sierraclub.org/site/DocServer/NMSanJuan_GS_FactSht_02_low.pdf?docID=11341">http://action.sierraclub.org/site/DocServer/NMSanJuan_GS_FactSht_02_low.pdf?docID=11341</a>
Page 27 of 34	TEPC_CORPW0264786_CISO	San Juan	coal	New Mexico	1,392	"Increased risk of heart attacks; pneumonia, bronchitis, hospital admissions premature death
Page 27 of 34	TEPC_CORPW0265069_CISO	San Juan	coal	New Mexico	1,392	
Page 27 of 34	TEPC_CORPW0265935_CISO	San Juan	coal	New Mexico	207	
Page 28 of 34	TEPC_CORPW0259369_CISO	San Juan	coal	New Mexico	1,392	<a href="http://sanjuancitizens.org/coal/">http://sanjuancitizens.org/coal/</a> leaches mercury and selenium into surrounding land and waterways
Page 29 of 34	TEPC_CORPW0259921_CISO	San Juan	coal	New Mexico	696	<a href="http://www.nmag.org/philanthropy-new-mexico/new-mexico-issues/environment">http://www.nmag.org/philanthropy-new-mexico/new-mexico-issues/environment</a>
Page 29 of 34	TEPC_CORPW0260078_CISO	San Juan	coal	New Mexico	696	
Page 32 of 34	TEPC_CORPW0267153_CISO	San Juan	coal	New Mexico	1,305	"among the worst polluters in the country"
Page 28 of 34	PACE_TEMUWS0125MD8_CISO	Cholla	coal	Arizona	400	<a href="http://earthjustice.org/news/press/2015/arizona-proposal-allows-aging-coal-plant-to-increase-air-pollution-for-decades-0">http://earthjustice.org/news/press/2015/arizona-proposal-allows-aging-coal-plant-to-increase-air-pollution-for-decades-0</a> Cholla impairs air quality at 13 national parks and wilderness areas
		Cholla	coal	Arizona		
Page 28 of 34	SRP_CORPW0259929_CISO	Navajo	coal	Arizona	16	<a href="http://earthjustice.org/news/press/2014/clean-air-national-park-advocates-challenge-epa-failure-to-protect-grand-canyon-from-navajo-generating-station">http://earthjustice.org/news/press/2014/clean-air-national-park-advocates-challenge-epa-failure-to-protect-grand-canyon-from-navajo-generating-station</a> Clean Air, National Park Advocates Challenge EPA
Page 28 of 34	SRP_TEMUWS0125MD6_CISO	Navajo	coal	Arizona	240	Failure at Navajo
Page 29 of 34	SRP_CORPW0260090_CISO	Navajo	coal	Arizona	8	Sierra Club files petition to review EPA decision.

Jim Phelps

MCE's 2014 RPS Compliance Report's Hourly e-Tag Summary (starts on p. 20 of 34)

Issued 3-Sep-15

<u>RPS Compliance Report Location</u>	<u>e-Tag I.D.</u>	<u>Power Plant Generator Name</u>	<u>Type</u>	<u>Location</u>	<u>Megawatt- hours</u>	<u>Environmental Comments</u>
Page 28 of 34	AZPS_CORPW0265060_CISO	Palo Verde	nuclear	Arizona	2	<p><b>MCE claims it does not buy unit specific nuclear</b></p> <p>MCE rejects nuclear with its Resolution No. 2011-09</p> 
Page 28 of 34	AZPS_CORPW0265066_CISO	Palo Verde	nuclear	Arizona	37	
Page 28 of 34	AZPS_CORPW0259956_CISO	Palo Verde	nuclear	Arizona	3	
Page 28 of 34	AZPS_CORPW0259955_LDWP	Palo Verde	nuclear	Arizona	400	
Page 28 of 34	AZPS_MSCG01MSDKJ76_CISC	Palo Verde	nuclear	Arizona	400	
Page 29 of 34	AZPS_IIDMA10032435_IID	Palo Verde	nuclear	Arizona	400	
Page 32 of 34	AZPS_CORPW0263549_CISO	Palo Verde	nuclear	Arizona	7	