

Front Side Door Sill Trim Plate Package Installation (Instruction ID: 84185606)

Installation Instructions Part Number

84185606

Front Door Sill Trim Plate Kit Contents

| Qty | Description |
|-----|--|
| 2 | Sill Trim Plate Assembly |
| 4 | Battery |
| 2 | Hole Seal Out Tape Strip (Square Corners) |
| 2 | Activation Tape Strip (Round Corners With Foil Insert) |
| 1 | Alcohol Prep Pad |
| 1 | Plastic Trim Tool |
| 1 | Installation Instructions |

Recommended Tools

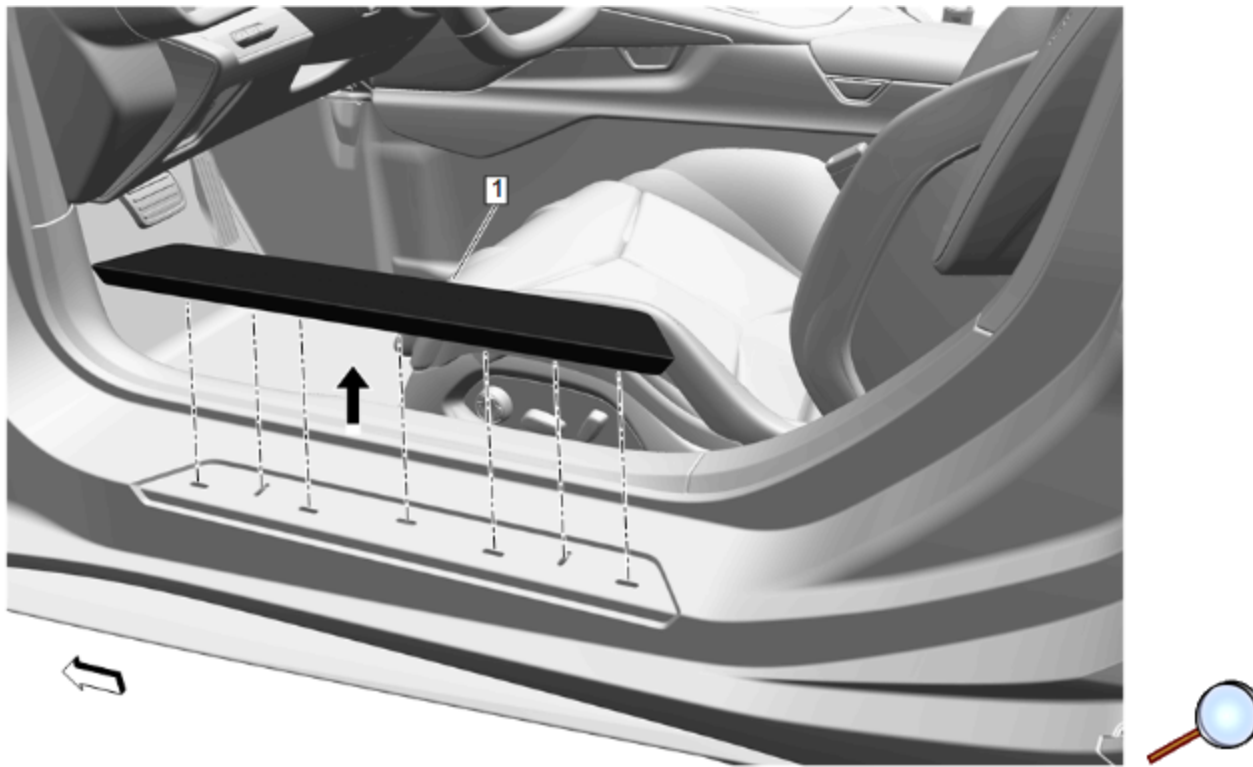
- Soft, Lint-Free Towels
- Plastic trim tool or equivalent to remove existing sill plate (if required)

Procedure

Preliminary Procedures

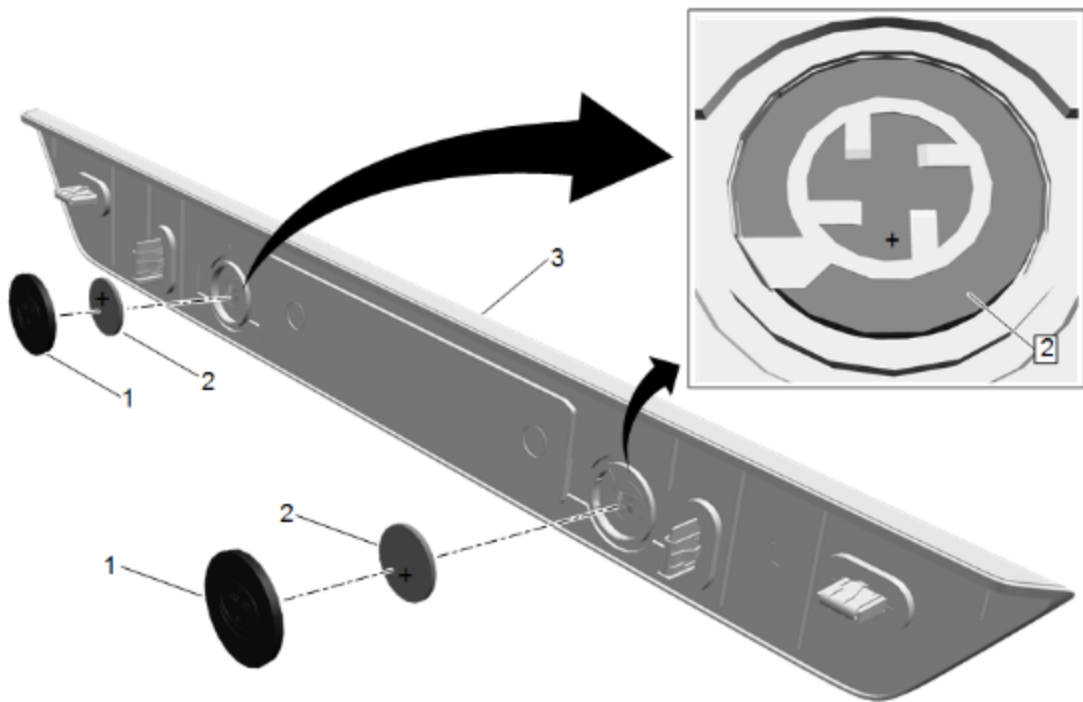
1. After opening the kit, check to see if any parts are missing and that the product is not damaged.
2. This product should be installed with proper installation tools.
3. Install this product while observing all warnings and precautions stated in this instruction sheet.
4. Thoroughly wash entire surface area where parts will be installed.
5. Temperature of sill plates and the vehicle must be 70°F to 90°F (21°C to 32°C).

Installation

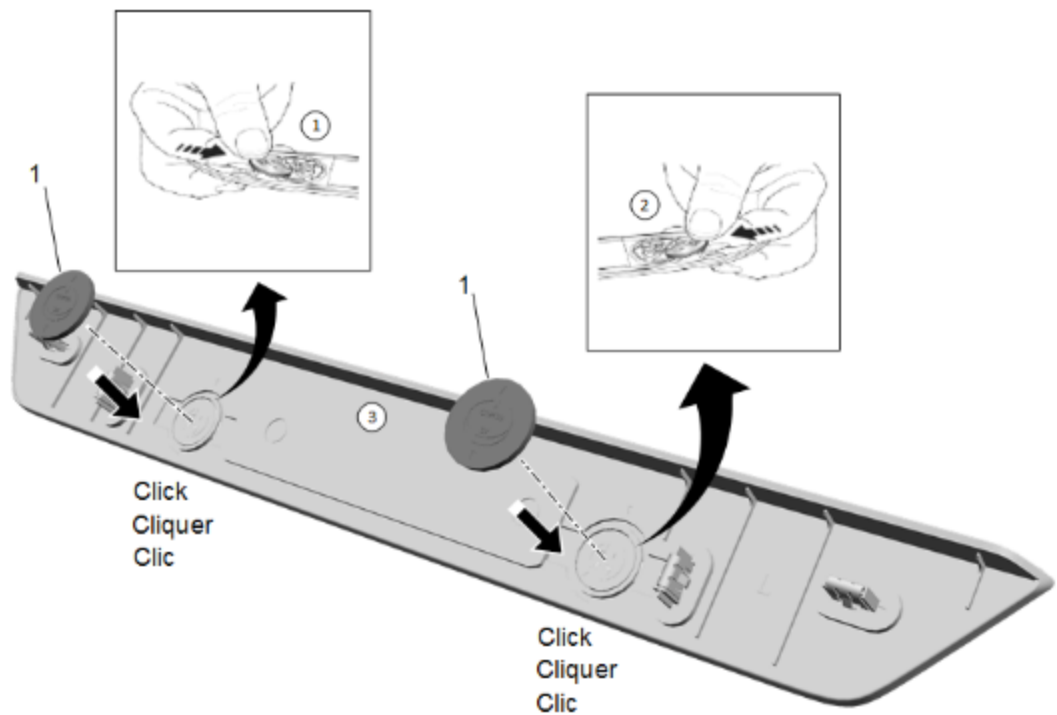


Caution: Do not use metal tools as they could cause damage to paint.

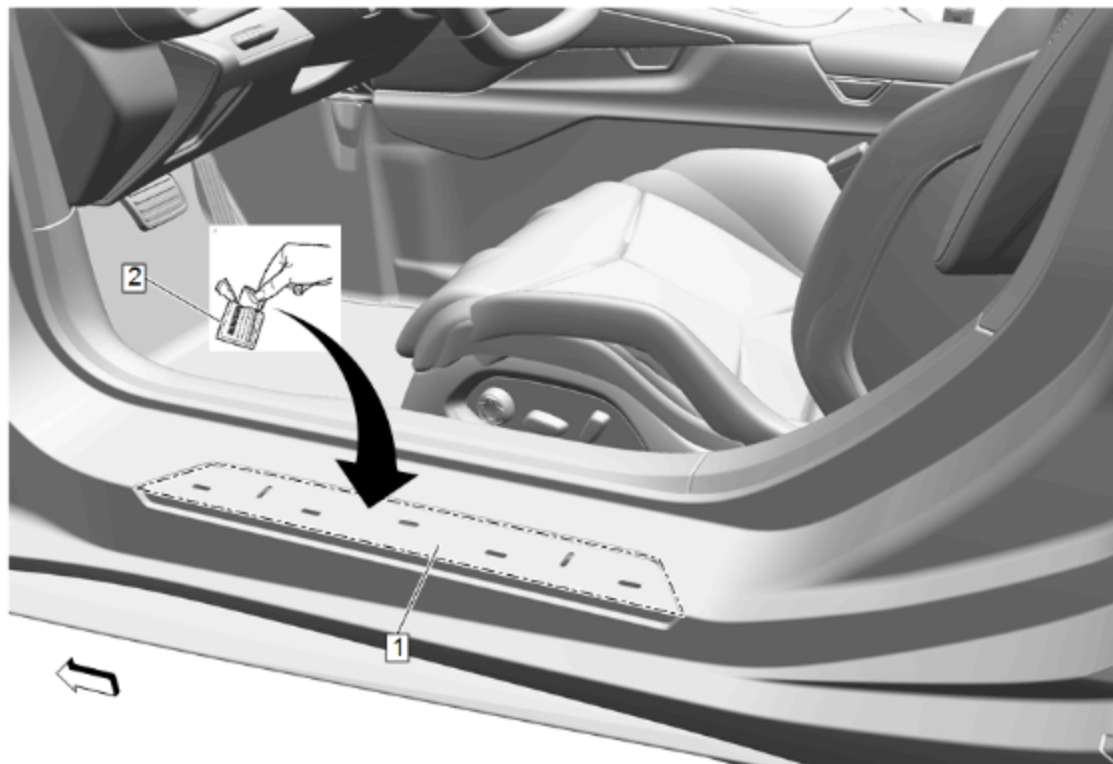
1. Using a plastic trim tool included with kit or equivalent, carefully remove the production sill plates (1), if equipped.



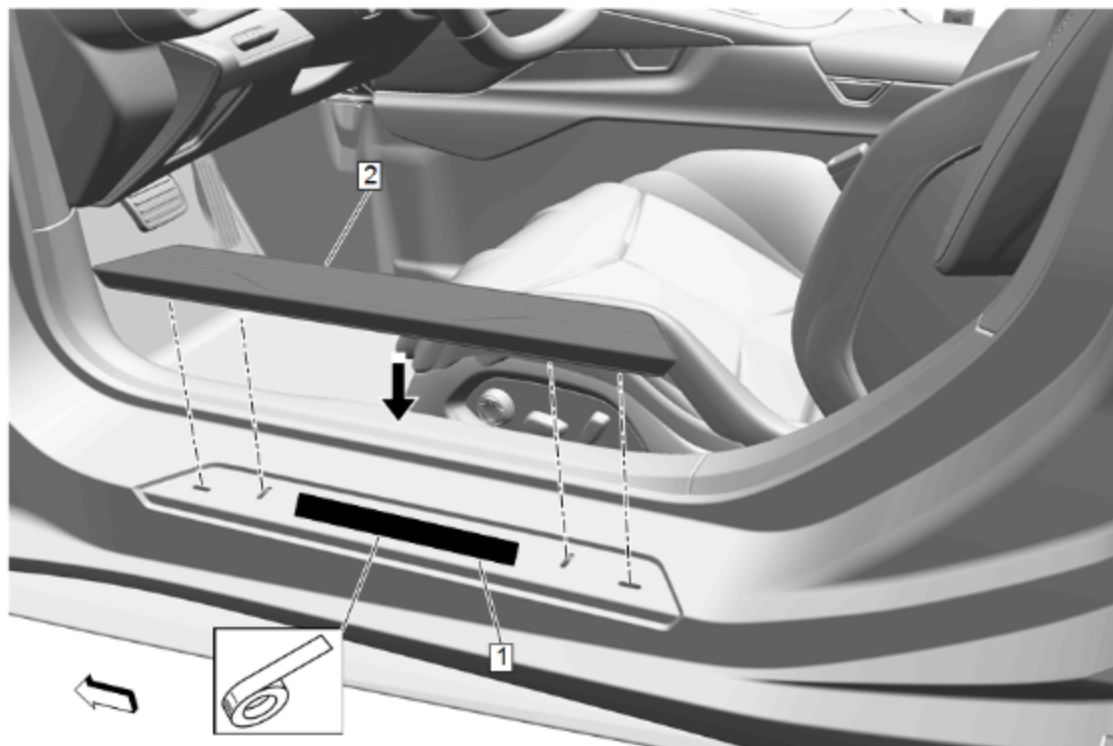
2. Remove both battery covers (1) from the accessory sill plate (3).
3. Insert the 2 supplied batteries (2) with the positive (+) side facing up as shown.



4. Snap the battery covers (1) into place.

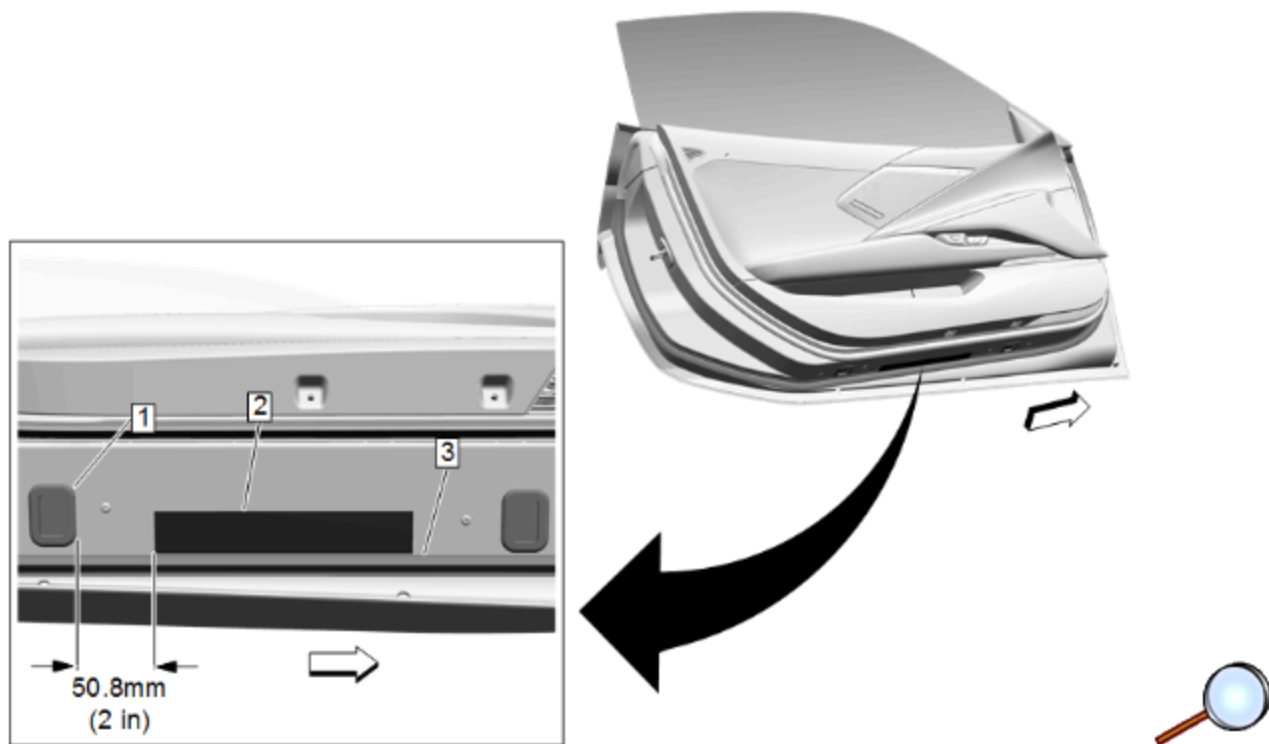


5. Wipe area (1) where the sill plate is to be applied using supplied alcohol prep pad (2) and follow with a dry wipe to remove any residual alcohol.



6. Align Hole Seal Out Tape Strip (1) over the center three holes on rocker sill. These holes are not needed for the accessory sill trim plate. Make sure all three holes are completely covered by the tape (1) and firmly wet out the tape on the rocker sill.
7. Once the tape is applied, align the accessory sill trim plate clips to the remaining attachment holes on the rocker sill and firmly push down on the accessory sill trim plate (2) to snap into place.
8. Repeat installation for opposite side.

Activation Tape Installation



Note: Activation tape is needed to allow the sill plate to illuminated properly. This tape is to be installed on the bottom of the door inner panel centered above the sill plate.

1. With the door open, locate the rear most door plug (1) on the bottom of the door inner panel.
2. Location of the Activation Tape Strip (2) is 2" forward of rearmost plug (1) (as shown).
3. Align the long edge of tape strip to the edge of the door primary seal (3). Once the activation tape is properly aligned, completely wet out the tape on the inner panel.
4. Close the door for one minute and then open the door and ensure accessory sill trim plate illuminates.
5. Remove the protective film from the surface of the accessory sill trim plate.
6. Repeat for opposite side.

Owner's Manual Addendum

Note: Please leave this section with the vehicle after installation.

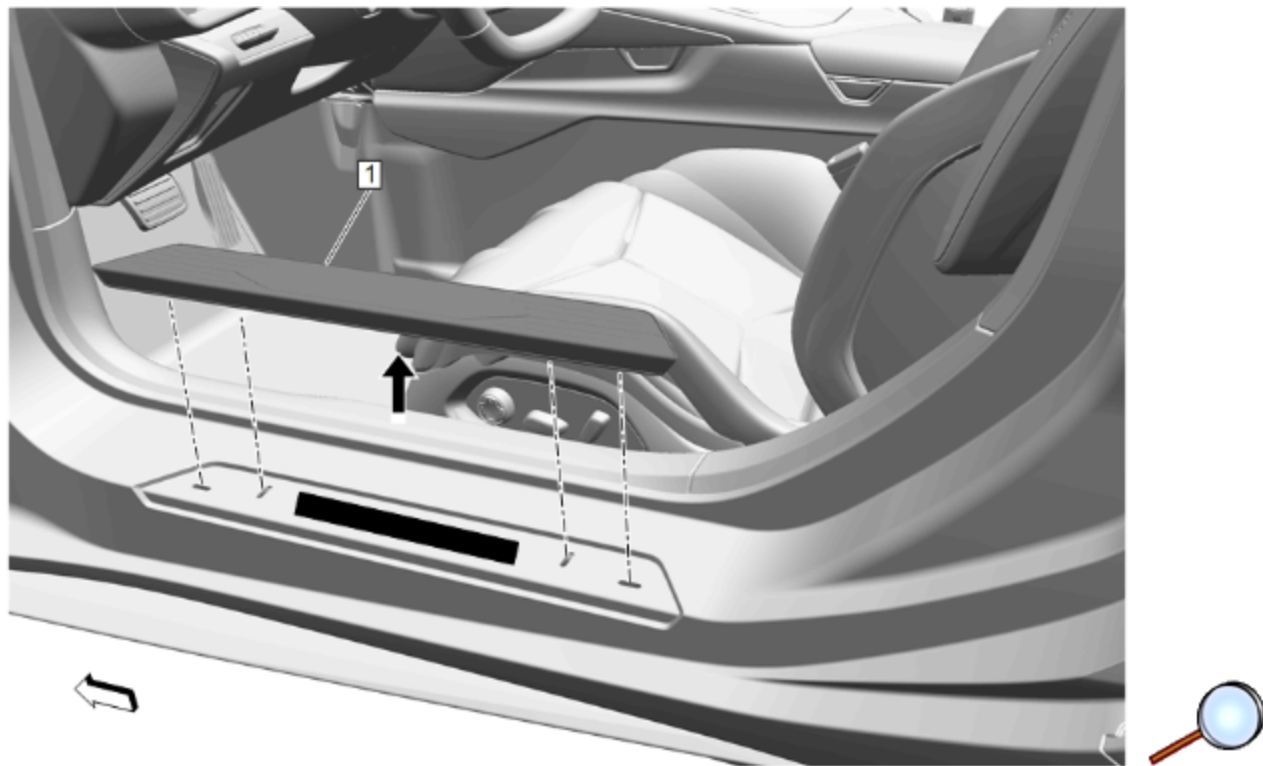
Note: Please leave plastic trim tool supplied with kit to customer.

Illuminated Side Door Sill Trim Plate

This vehicle has illuminated sill trim plates that operate automatically with the opening and closing of the vehicle doors. The sill trim plates operate on batteries that over time will require replacement. If the sill trim plate stops illuminating when the door is opened, please follow the battery replacement instructions shown below.

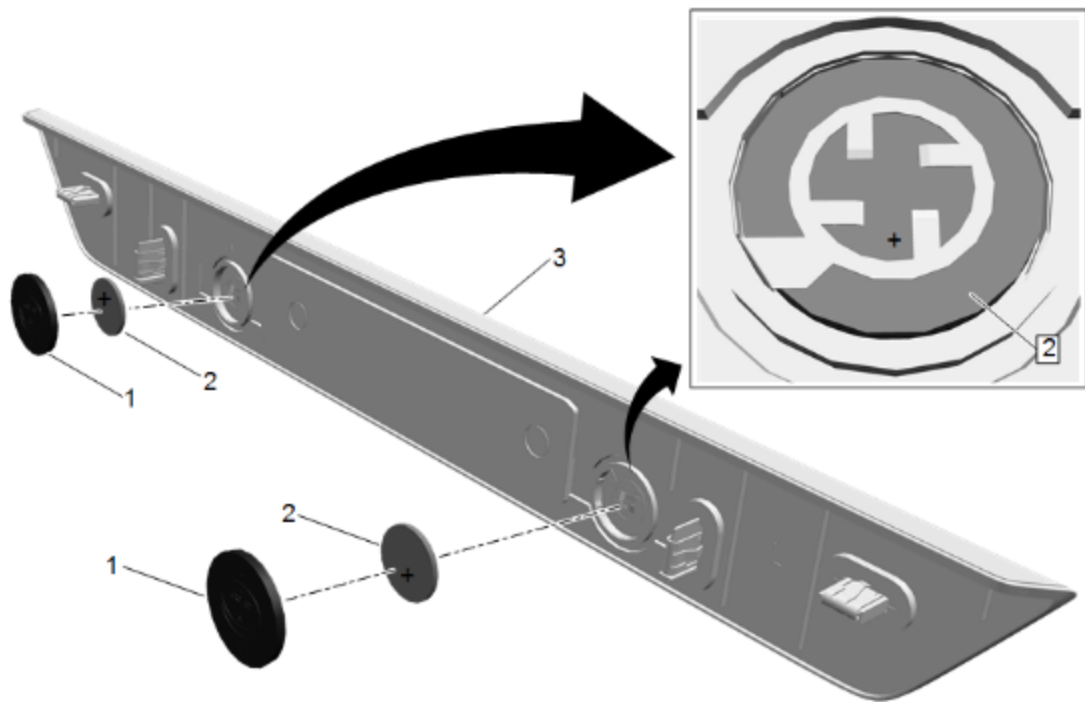
Battery Replacement Procedure

1. Obtain 2x CR2430 3V replacement batteries.

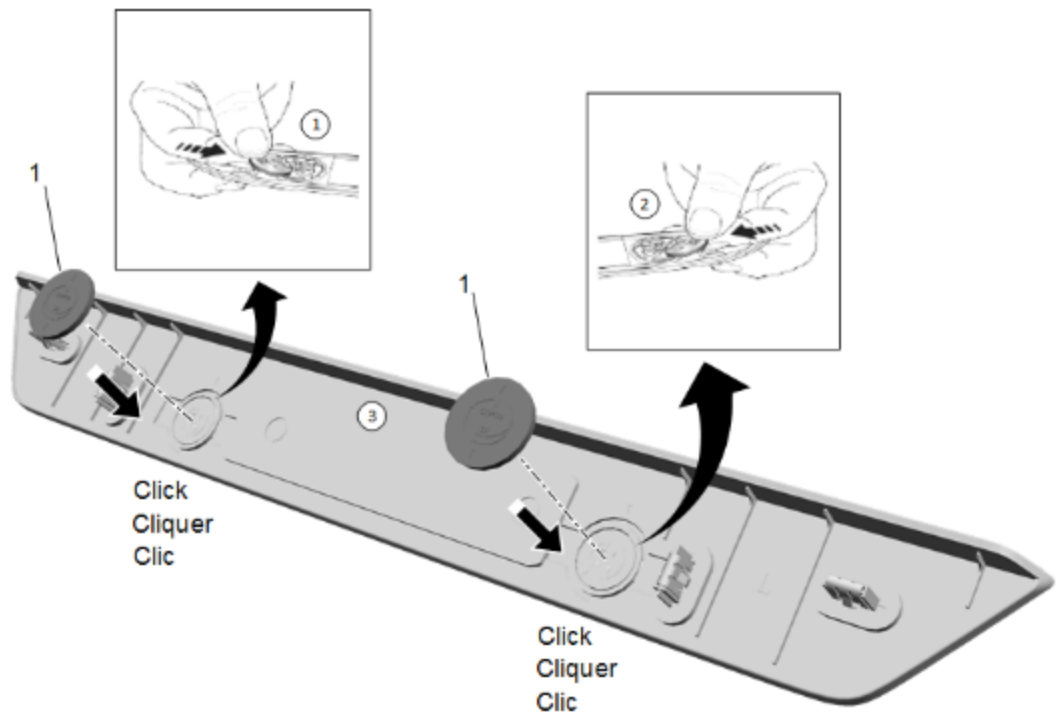


Caution: Do not use metal tools as they could cause damage to paint.

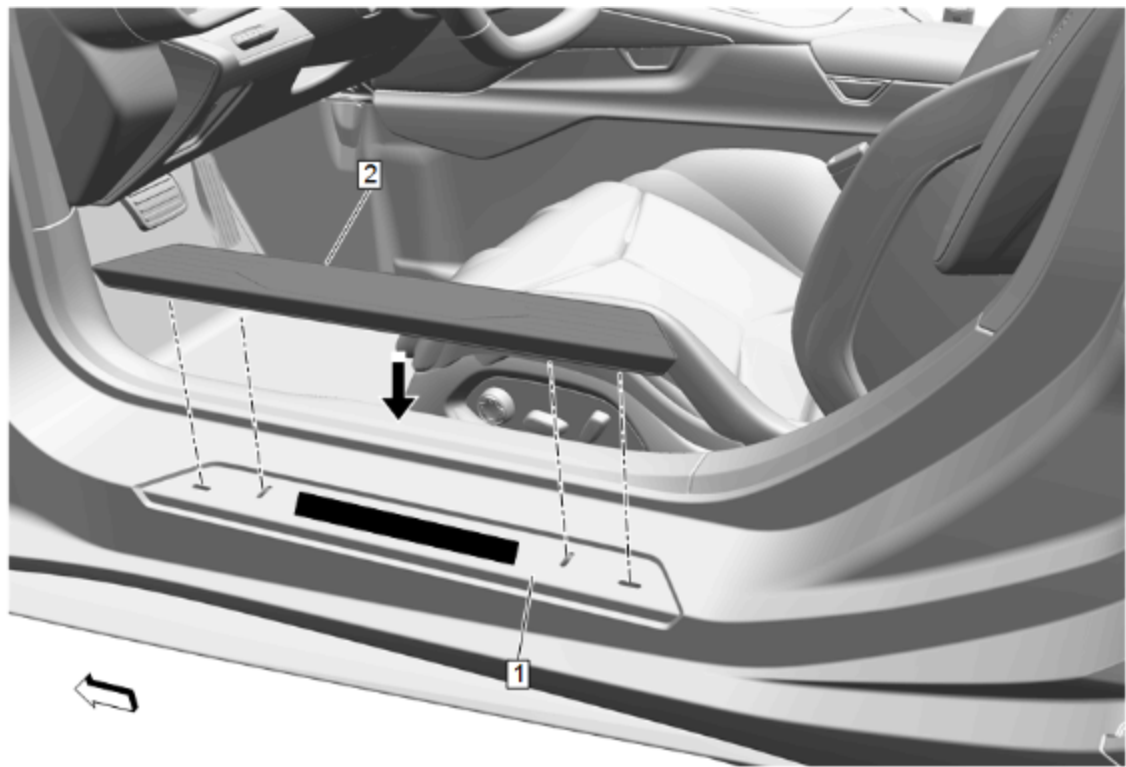
2. Using a plastic trim tool included with kit or equivalent, carefully pry the ends of the sill trim plate (1) upward to release the clips that hold the sill trim plate to the rocker sill.



3. Turn the sill trim plate (3) over and remove the two battery covers (1).
4. Remove the old batteries (2) and properly discard.
5. Insert new batteries with the positive (+) side facing up as shown.



6. Snap the battery covers (1) into place.



7. Align the clips of the sill trim plate (2) over the attachment holes on rocker sill (1) and firmly push down on the sill trim plate (2) until it snaps into place.
8. Close the door for one minute and then open the door and ensure accessory sill trim plate illuminates.