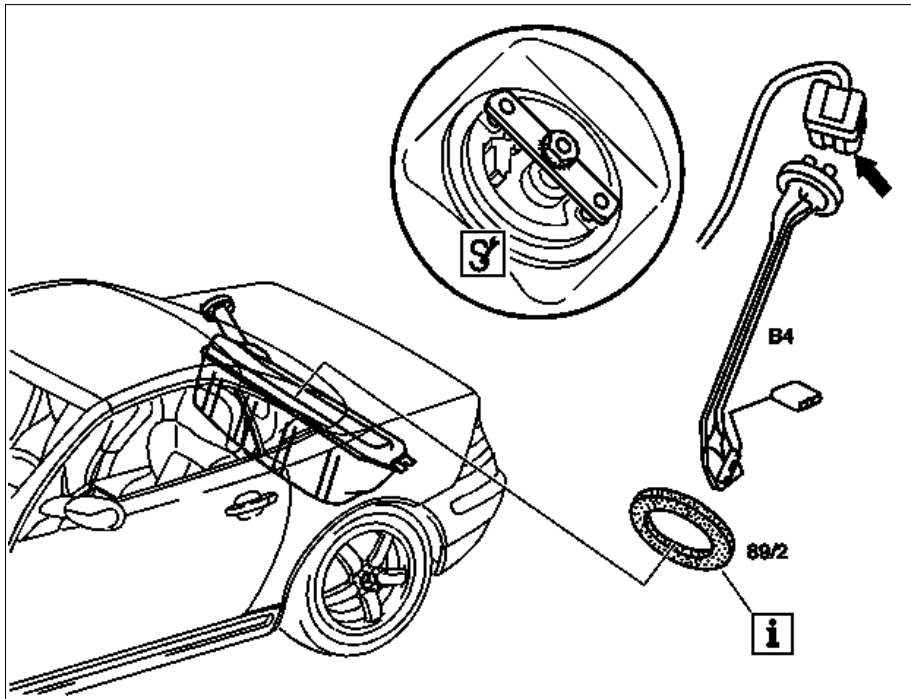


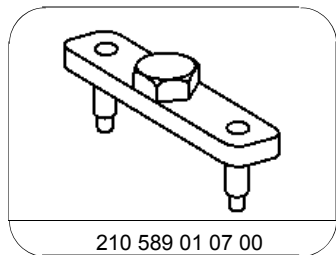
MODEL 170

89/2 Seal
 B4 Fuel gauge sensor
 Arrow Connector



P47.10-0334-06

⚠ ⚠	Removing, installing		
⚠ Danger!	Risk of explosion from ignition. Risk of poisoning from inhaling and swallowing fuel. Risk of injury as a result of fuel coming into contact with skin and eyes.	No fire, naked flame or smoking. Pour fuels only into suitable and appropriately marked containers. Wear protective clothing when handling fuel.	AS47.00-Z-0001-01A
1	Empty fuel tank, fill	i If fuel tank is full, pump out about 8 liters of fuel Model 170 ^(USA) as of model year 98	AR47.10-P-4001B AR47.10-P-4001F
2	Remove trunk blind		
3	Unplug connector (arrow) for fuel gauge sensor (B4) and pressure sensor ^(USA) only)	Raise trim for fuel tank in trunk for this step	
4	Open bayonet lock of fuel gauge sensor (B4)		*210589010700
5	Take out fuel gauge sensor (B4)	i Installation: replace seal (89/2). Oil to facilitate installation.	
6	Install in the reverse order		



210 589 01 07 00

Pin wrench