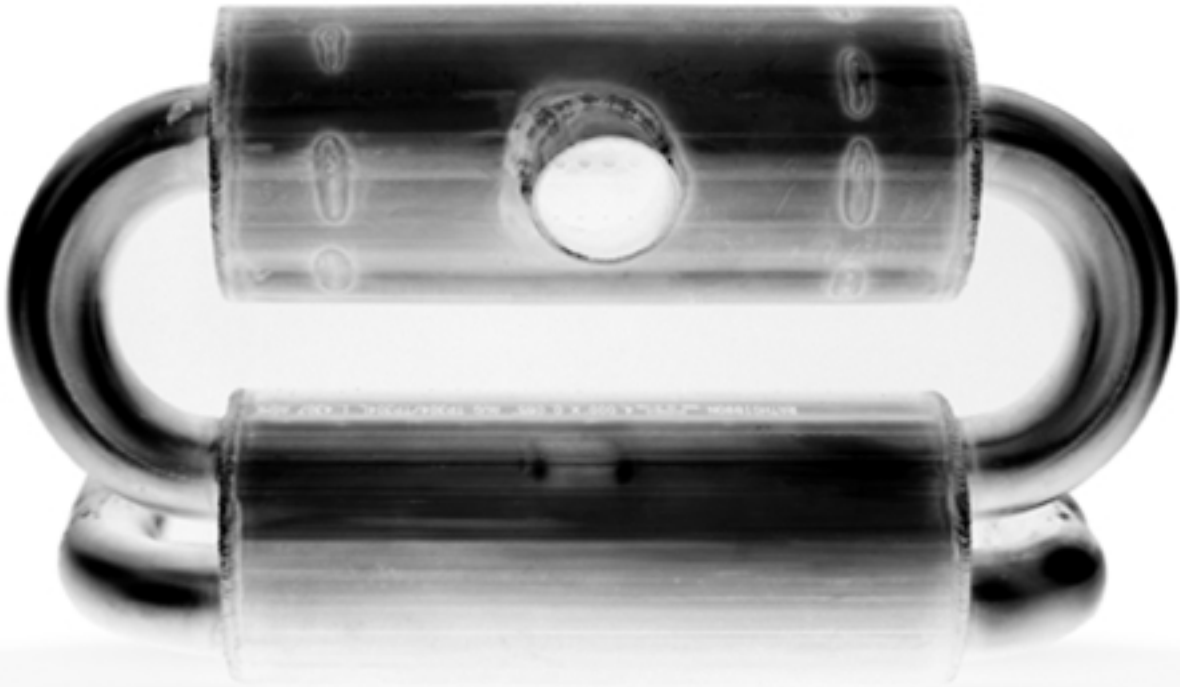


Marsh Mellow

PERFORMANCE EXHAUSTS



INSTALLATION INSTRUCTIONS

MARSHMELLOW DOUBLE BARRELL
EXHAUST SYSTEM





Thank you for purchasing the MARSHMELLOW DOUBLE BARRELL EXHAUST. It's our goal to make the best stainless exhaust for the "Briggs and Stratton" 35 HP engine. The MARSHMELLOW DOUBLE BARRELL EXHAUST SYSTEM, is designed with noise suppression, performance and long life in mind.

If you have any questions during the installation process or about the product please call the number below at any time.

Warranty:

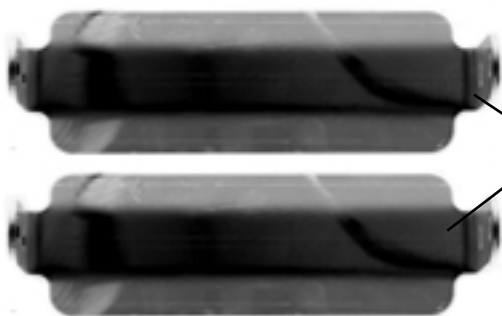
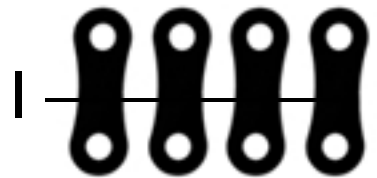
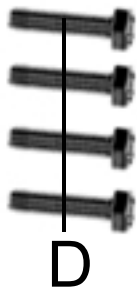
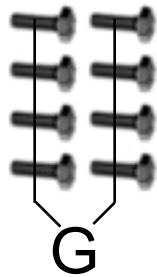
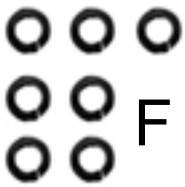
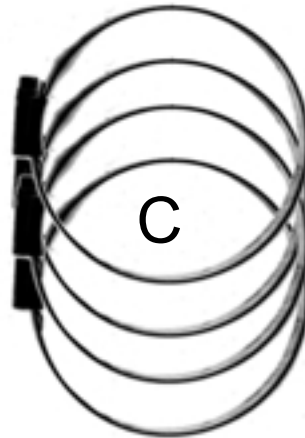
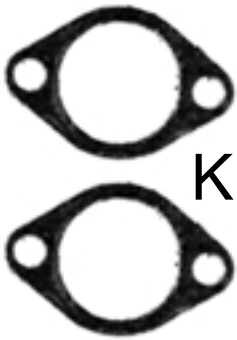
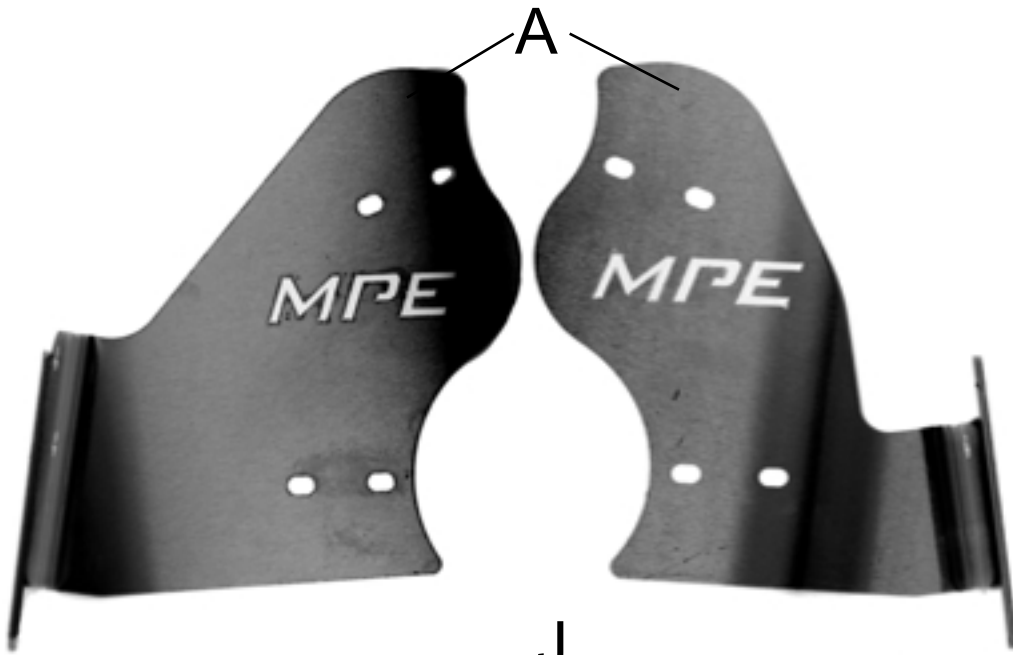
The MARSHMELLOW DOUBLE BARRELL EXHAUST SYSTEM has a one year repair or replacement warranty from time of purchase.

Continuing excellence:

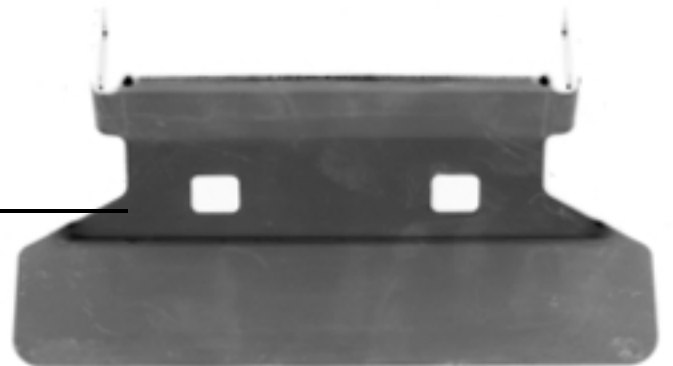
MARSHMELLOW PERFORMANCE is always striving to stay ahead of the competition. If you have any questions concerning our products, or have ideas for new products, we would love to hear from you so feel free to contact us at the number below. If revisions or new parts are developed based from your suggestions, you will receive the first production unit free of charge.

CONTACT US AT: 256 -996-1632

PARTS ASSESTMENT



B — optional —



- A. 1- left engine bracket
1- right engine bracket
- B. 2- muffler braces
(1optional gator tail
heatshield brace)
- C. 4- house clamps
- D. 4- large long bolts
(m8, 13mm socket)
- E. 2- large short bolts
(m8, 13mm socket)
- F. 7- 8mm lock washers
- G. 8- small bolts
(m6x16, 10mm socket)
- H. 8- m6 nylock nuts
(10mm socket)
- I. 4- engine bracket
spacers
- J. 2- header flanges, 1
short 1 long
- k. 2- header flange
gasket



1. Remove old exhaust gaskets.

2. Install short header flange on right side, long header flange on left side using new exhaust gaskets and stock mounting bolts. (SEE FIGURE 1). Leave bolts loose enough to allow the flanges to move during installation.

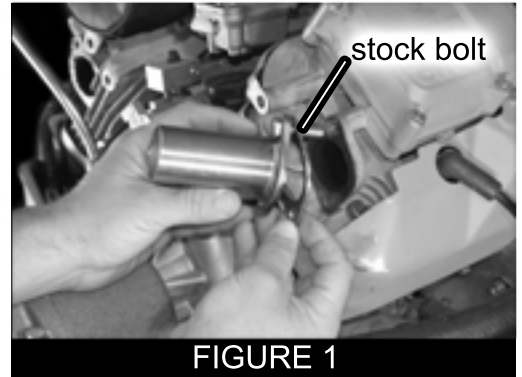


FIGURE 1

3. Assemble the bracket using G (8 small bolts, m6x16) and H (nylock nuts). Leave loose enough to allow movement of the braces. (SEE FIGURE 2)

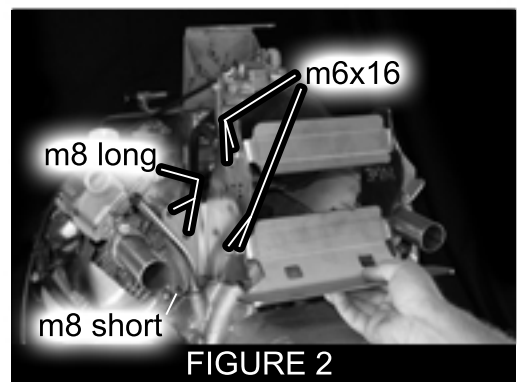


FIGURE 2

4. Bolt the bracket to the engine using D (4 large long bolts, m8), E (2 large small bolts, m8) and F (8mm lock washers). Use 2 long m8 bolts thru 2 spacers on left top holes,(SEE FIGURE 2 & 3). -- i have found it easier to put top bolt thru 2 spacers first, then rotate spacers down to the second bolt hole --
Do the same for the right side. Then tighten securely using a 13mm socket

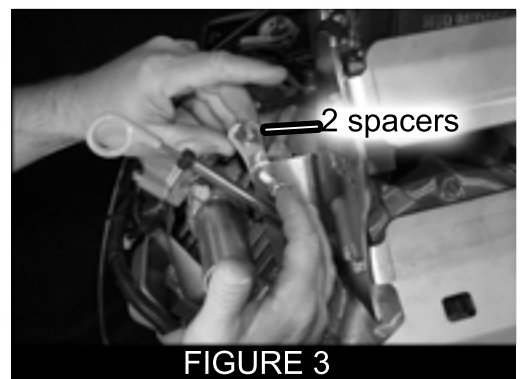


FIGURE 3

If you have stock carb then put 2 spacers on the left. On right side use only 1 spacer and 1 lockwasher to take up gap caused by the governor bracket and tighten (SEE FIGURE 4)

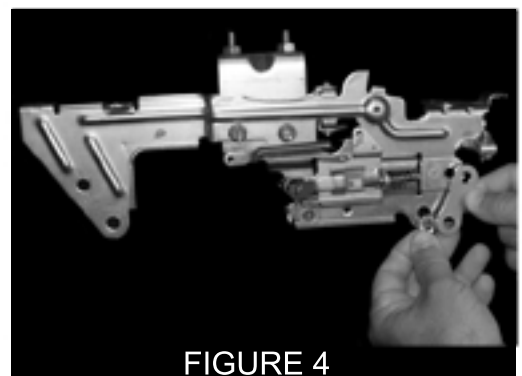


FIGURE 4



5. Gently slide exhaust over flanges evenly until it contacts the braces. (You may need to take a block of wood and gently tap the exhaust into place). The slip fitting can sometimes be a little tight.
6. Place the 4 hose clamps C around the braces and tighten snug. If using the OPTIONAL gator tail heat shield brace, feed the clamp thru the holes on the gator tail heat shield.
7. Push the exhaust snugly against the bracket and tighten the 8 m6 bolts and m6 nylock washers using a 10mm wrench and ratchet.
8. Tighten the 4 stock bolts on the header flanges.
9. Recheck alignment of the hose clamps for best cosmetic look.
10. Spray with WD40 and wipe down exhaust before starting. It will smoke during initial heat cycle.
11. Recheck all bolts and hose clamps after 2 hours use. ENJOY...!

