



YAMAHA



**COMMAND LINK
MULTIFUNCTION METER
(ROUND)**

OPERATION MANUAL

6Y8-2819V-00


To the owner

Thank you for choosing the Yamaha Command Link Multifunction Meter.

This Operation Manual contains information you will need for proper operation.

A thorough understanding of these simple instructions and of those in the Owner's Manual of the outboard motor will help you obtain maximum enjoyment of your new Yamaha. This manual should be considered a permanent part of this meter and should remain with it even if the meter is subsequently sold.

In this Operation Manual particularly important information is distinguished in the following ways.

 The Safety Alert Symbol means ATTENTION! BECOME ALERT! YOUR SAFETY IS INVOLVED!

WARNING

Failure to follow WARNING instructions could result in severe injury or death to the machine operator, a bystander, or a person inspecting or repairing the outboard motor.

CAUTION:

A CAUTION indicates special precautions that must be taken to avoid damage to the outboard motor.

NOTE:

A NOTE provides key information to make procedures easier or clearer.

**COMMAND LINK
MULTIFUNCTION METER
(ROUND)**

OPERATION MANUAL

©2005 by Yamaha Motor Co., Ltd.

1st Edition, March 2005

All rights reserved.

Any reprinting or unauthorized use without the written permission of Yamaha Motor Co., Ltd. is expressly prohibited.

Printed in Japan

The Command Link Multifunction Meter enables the display of information through digital communication with the engine.

Optional parts such as the speed sensor, cooling water pressure sensor, Triducer-Multi sensor, and GPS are described in this manual by assuming that the parts are installed and set up on the outboard motor.

The Command Link Multifunction Meter described in this manual consists of the following.

- Tachometer unit
(Part No.: 6Y8-8350T-1*)
- Speed & Fuel meter unit
(Part No.: 6Y8-83500-1*)

The Command Link Multifunction Meter is compatible with the following outboard motors.

4-stroke models:

Fuel injection models only

2-stroke models:

HPDI models only

The operations of the set button and the mode button are described in this manual as follows.

Button operations:







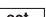

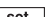



-  Press the set button one time.
-  Press the mode button one time.
-  or  Press the set button or the mode button one time.
-  (1 second)
Press the set button for 1 second.
-  (4 seconds)
Press the mode button for 4 seconds.
-  (10 seconds)
Press the set button for 10 seconds.
-  (1 second) (2 times)
Press the mode button two times, 1 second each time.
-  + 
Press the set button and the mode button simultaneously.
-  +  (1 second)
Press the set button and the mode button simultaneously for 1 second.



Table of contents

1. Tachometer unit	1	Fuel flow display	20
Description	2	Fuel economy display	21
Activating the meter	2	Total fuel consumption display.....	21
Periodic maintenance notification	3	Ambient water temperature display (optional: Triducer-multi sensor has been installed)	22
Tachometer	3	Depth display (optional: Triducer-multi sensor has been installed)	22
Trim meter	3	Clock (optional: GPS has been installed)	23
Multifunction display	4	Trip display (optional: speed sensor has been installed)	23
Cooling water/engine temperature display.....	5	Changing backlight settings	23
Battery voltage display	6	Changing settings (custom mode)	24
Total hour/Trip hour display	7	Switching to custom mode	24
Cooling water pressure display (optional: cooling water pressure sensor has been installed).....	7	01 (setting displayed units)	24
Oil pressure display (4-stroke models)	8	02 (setting fuel sensor)	26
Oil level display (2-stroke models)	9	03 (setting correction value) ..	26
Water detection warning	9	3. Setting up the meters	28
Changing backlight settings	10	Activating for the first time.....	28
Adjusting trolling speed	10	Setting the initial settings	28
Changing settings (custom mode)	11	Tachometer unit	28
Switching to custom mode	11	Speed & Fuel meter unit:	28
01 (resetting maintenance intervals).....	12		
02 (setting trim angle)	12		
03 (setting corresponding engine)	13		
Service functions	14		
Diagnosis	14		
Resetting engine number	15		
2. Speed & Fuel meter unit	16		
Description	17		
Activating the meter	17		
Speedometer.....	18		
Fuel meter	19		
Multifunction display	19		

Tachometer unit

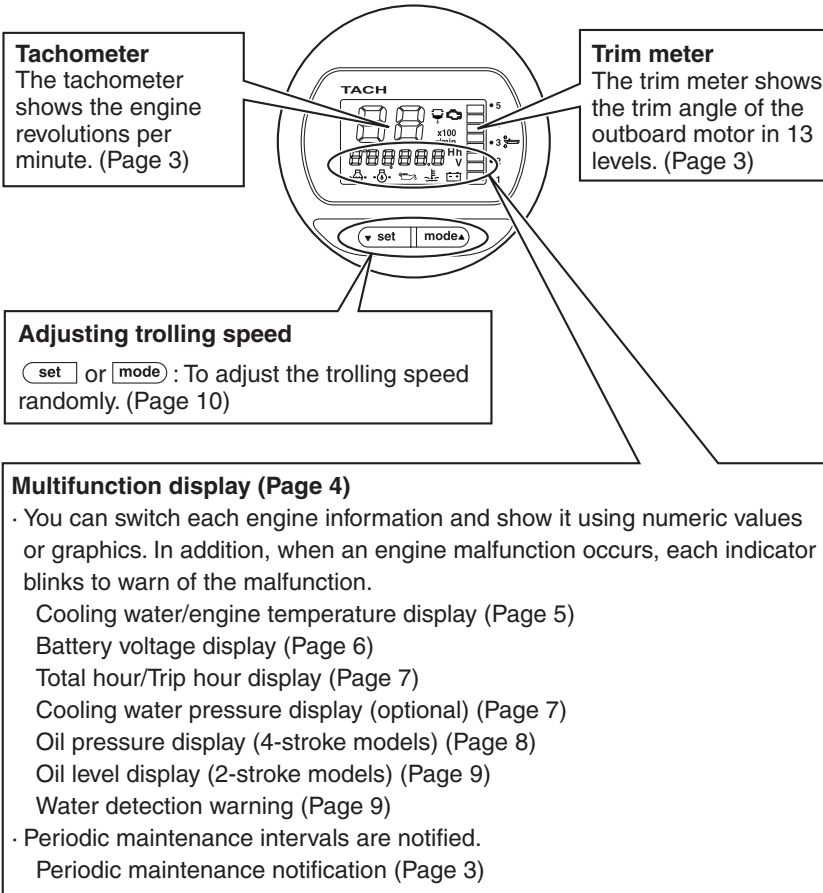
Speed & Fuel meter unit

Setting up the meters

1. Tachometer unit

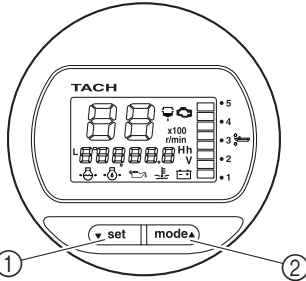
NOTE:

Depending on the model of the outboard motor, some functions may not be compatible. For information on models which contain the compatible functions, consult a Yamaha dealer.

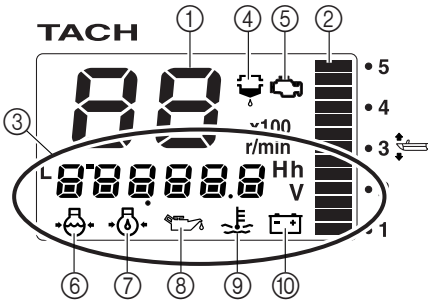


Description/Activating the meter

Description



- ① set button
- ② mode button



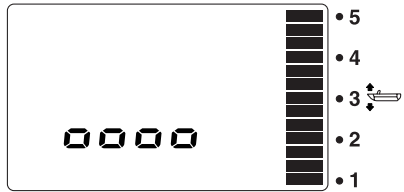
- ① Tachometer
- ② Trim meter
- ③ Multifunction display
- ④ Water detection warning indicator
- ⑤ Maintenance indicator
- ⑥ Cooling water pressure
- ⑦ Oil pressure (4-stroke models)
- ⑧ Oil level (2-stroke models)
- ⑨ Cooling water/engine temperature
- ⑩ Battery voltage

Activating the meter

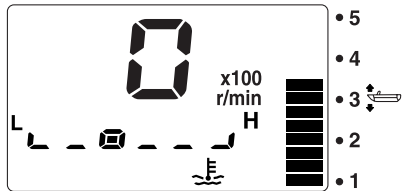
When the engine start switch is turned to ON, the meter is activated and "0000" appears on the multifunction meter. Then, all the displays come on and the display switches to the normal display after the total hour display comes on.

Tachometer unit

TACH



TACH

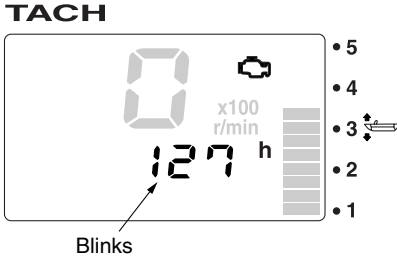


Tachometer/Trim meter


Periodic maintenance notification

When the hours of engine operation exceed 100 hours, the elapsed time from the previous maintenance period (when the meter was reset) blinks.

set or **mode**: To return to the normal display.



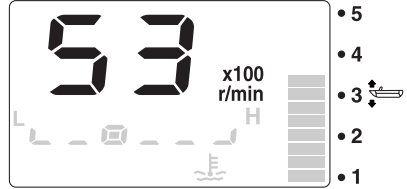
NOTE:

- The elapsed time blinks every time the engine is started until it is reset. In addition, the maintenance indicator () remains on until it is reset.
- When the hours of engine operation exceed 100 hours and the periodic maintenance notification is activated, consult an authorized Yamaha dealer for periodic maintenance.
- To reset the maintenance period, see “01 (resetting maintenance intervals)” in “Changing settings (custom mode).”

Tachometer

The tachometer shows the engine revolutions per minute.

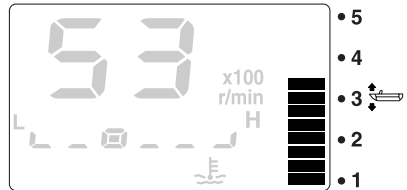
TACH



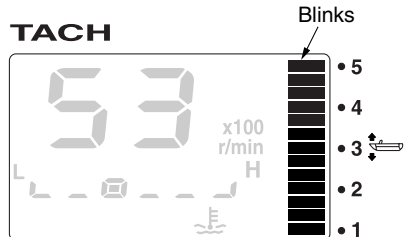
Trim meter

The trim meter shows the trim angle of the outboard motor in 13 levels.

TACH



When the angle of the outboard motor exceeds the trim range, the top segment blinks.

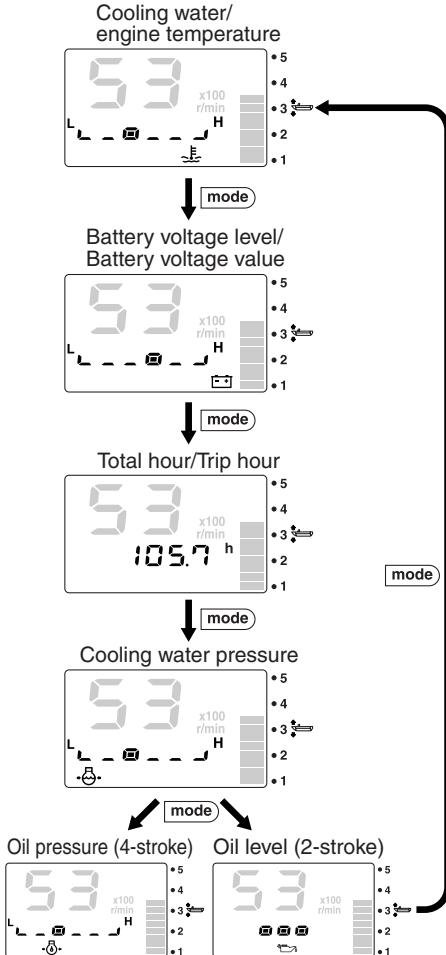


Multifunction display

Multifunction display

The multifunction display shows various information using numeric values or graphics.

mode : Press to switch between the displays.




When the engine start switch is turned to OFF, the last display shown is shown first when the engine start switch is turned to ON again.

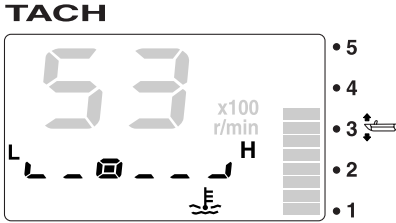
NOTE: _____
If an optional sensor is not connected to the meter, the corresponding display will not be displayed.


Cooling water/engine temperature display

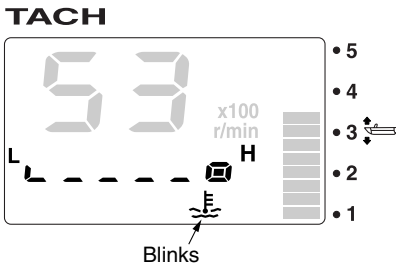
Cooling water/engine temperature display

The cooling water/engine temperature indicator () comes on and the cooling water temperature or the engine temperature is shown in 6 levels.

NOTE: _____
The cooling water/engine temperature display shows “L” for low and “H” for high.



When the engine overheats, the cooling water/engine temperature indicator () blinks to warn of the malfunction.

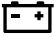


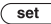
CAUTION: _____

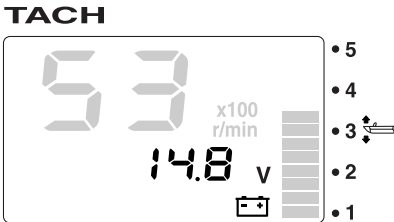
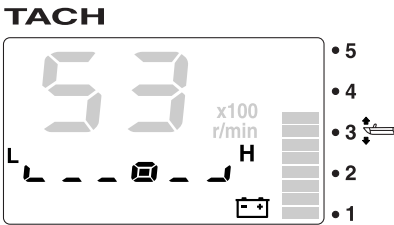
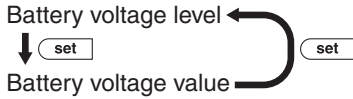
- When the overheat warning comes on, turn the engine off and check the cooling water inlet for clogs.
 - If you cannot locate and correct the cause, consult a Yamaha dealer.
-

Battery voltage display

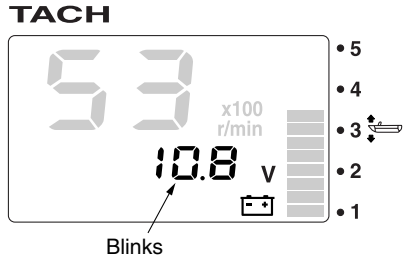
Battery voltage display


The battery voltage indicator () comes on and the battery voltage of the engine is shown in 6 levels or the voltage value is shown.

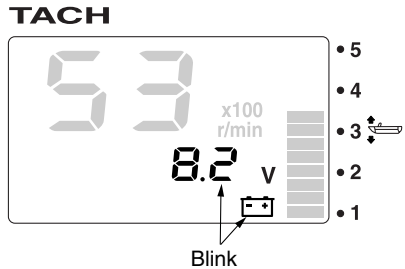
 : Press to switch between the display formats.



When the battery voltage decreases to 12 volts or less or increases to 16 volts or more the voltage value blinks.



When the battery voltage decreases below the voltage that is required by the engine, the battery voltage indicator () blinks to warn of the malfunction.



CAUTION:

- When the low battery voltage warning comes on, check the battery and the wiring.
- If you cannot locate and correct the cause, consult a Yamaha dealer.

NOTE:

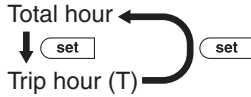
The battery voltage level display shows “L” for low and “H” for high.

Total hour/Trip hour display/Cooling water pressure display

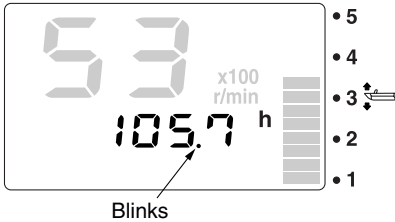
Total hour/Trip hour display

The total hour display shows the total hours of engine operation and the trip hour display shows the trip hours (T).

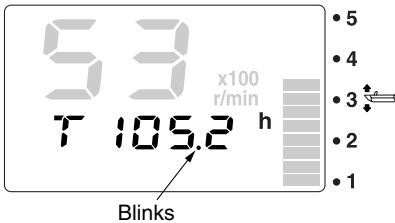
set : Press to switch between the display formats.



TACH



TACH



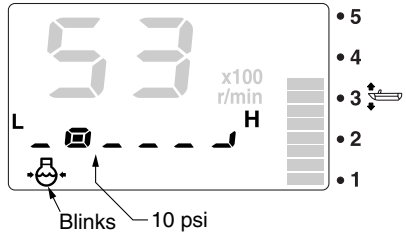
set + **mode** (1 second): To reset the trip hours (T).

NOTE: _____
The total hours of engine operation cannot be reset.

Cooling water pressure display (optional: cooling water pressure sensor has been installed)

The cooling water pressure indicator () comes on and the cooling water pressure is shown in 6 levels.

TACH



CAUTION:

- When the cooling water pressure decreases to 10 psi or less, turn the engine off and check the cooling water inlet for clogs.
- If you cannot locate and correct the cause, consult a Yamaha dealer.

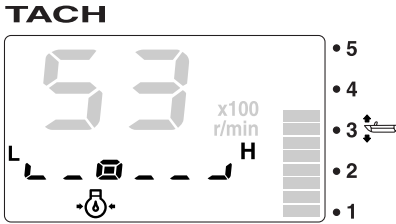
NOTE:

_____The cooling water pressure level display shows "L" for low and "H" for high.

Oil pressure display (4-stroke models)

Oil pressure display (4-stroke models)

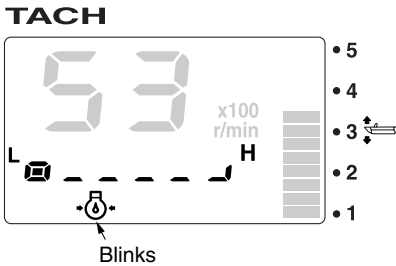
The oil pressure indicator (•⚙•) comes on and the engine oil pressure is shown in 6 levels.



NOTE: _____

- The oil pressure display shows "L" for low and "H" for high.
- The low oil pressure warning does not display the engine oil level.
- Depending on the model of the outboard motor, the oil pressure display may not be available.
- Depending on the operating conditions such as when the engine is operated at extremely low speeds, the oil pressure may be shown as low even when the engine is operating properly.

When the engine oil pressure drops too low, the oil pressure indicator (•⚙•) blinks to warn of the malfunction.




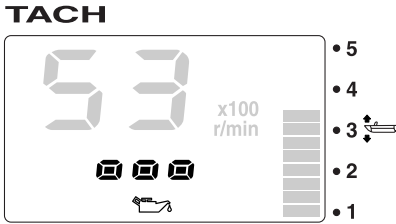
CAUTION: _____


- Do not operate the engine without engine oil. Severe engine damage can result.
- Check the oil level by following the procedure described in the engine Owner's Manual.
- If you cannot locate and correct the cause, consult a Yamaha dealer.

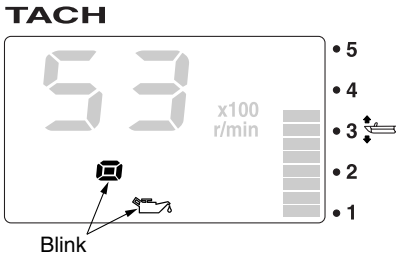
Oil level display (2-stroke models)/Water detection warning

Oil level display (2-stroke models)

The oil level indicator () comes on and the engine oil level is shown in 3 levels.



When the engine oil level is low, the oil level indicator () blink to warn of the malfunction.




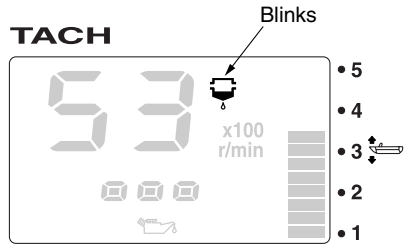
CAUTION:

Do not operate the engine without engine oil. Severe engine damage can result.

Water detection warning

When water has accumulated in the water separator (fuel filter), the water detection

warning indicator () blinks to warn of the malfunction. This function is not available for outboard motors that are not equipped with the water detection warning function.



CAUTION:

When the water detection warning comes on, turn the engine off and remove the water from the water separator (fuel filter) by following the procedure described in the Owner's Manual of the outboard motor. A malfunction can result if fuel mixed with water is sent to the engine.

NOTE:

set or mode: To deactivate the buzzer.

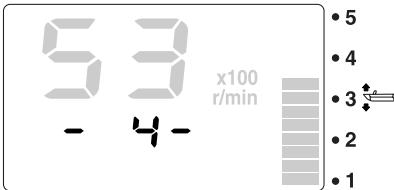
Changing backlight settings/Adjusting trolling speed

Changing backlight settings

You can turn the backlight on or off, or change the brightness level of the backlight for all meters synchronized.

1. **set** + **mode**: To activate the backlight mode.
2. **mode**: Press to switch between the five brightness levels (1–5).
set: To switch between the backlight on and “OFF.”

TACH



3. **set** + **mode**: To return to the normal display.

NOTE:

- The backlight default settings are “OFF” and brightness level 1.
- If no operations are carried out for 5 seconds or more, the display returns to the normal display.
- The backlight settings can be changed from all meters and all displays.

Adjusting trolling speed

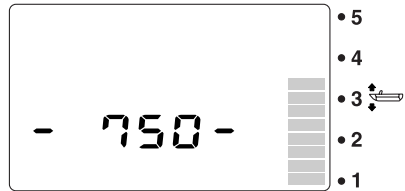
You can adjust the trolling speed randomly by increasing or decreasing it approximately 50 r/min.

When in the trolling speed setting mode, the display switches to the normal display when the engine speed is increased (within 3,000 r/min) using the throttle. When the throttle is closed, the display returns to the trolling speed setting mode.

This function is not available for outboard motors that are not equipped with the trolling speed adjustment function.

1. **mode** (1 second): To activate the trolling speed setting mode.

TACH



2. **set**: To decrease the engine speed.
3. **mode**: To increase the engine speed.
4. **set**: To return to the normal display and to the default engine idle speed.

Changing settings (custom mode)

NOTE: _____

- Trolling is affected by currents and other operating conditions and may differ from the actual engine speed.
 - The default engine idle speed is reset automatically when the display is switched to the normal display. The default engine idle speed is also reset automatically when the engine is turned off or when the engine speed exceeds 3,000 r/min.
 - When warming up a cold engine, the trolling speed cannot be decreased below the specified engine idle speed.
 - Depending on the model of the outboard motor, some functions may not be compatible. For information on models which contain the compatible functions, consult a Yamaha dealer.
-

Changing settings (custom mode)

Switching to custom mode

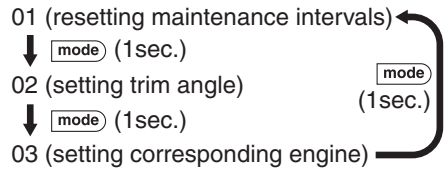
In the custom mode, you can change the meter function settings. Each setting function number is shown in the tachometer display.

1. Turn the engine off and the engine start switch to ON.
2. **mode** (4 seconds): To activate the custom mode.

TACH



3. **mode** (1 second): Press to switch between the setting function numbers and to switch to the change settings display.



4. Change each setting and return to the normal display. To change the settings, see the corresponding sections for each setting function.

NOTE: _____

If no operations are carried out for 30 seconds or more or if the engine is started, the settings will not be applied and the display returns to the normal display.

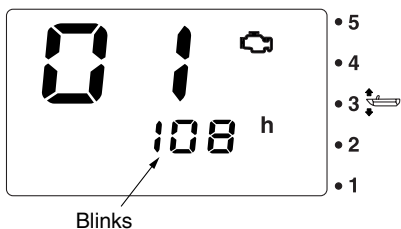
01 (resetting maintenance intervals)/02 (setting trim angle)

01 (resetting maintenance intervals)

You can reset the elapsed time from the previous maintenance interval (when the meter was reset).

1. Turn the engine off and the engine start switch to ON.
2. **[mode]** (4 seconds): To activate the custom mode and to switch to the resetting display.

TACH



3. **[set] + [mode]** (1 second): To reset the elapsed time to "0h" and return to the normal display.

NOTE:

Press the **[set]** button for 1 second from step 2 to cancel the resetting of the elapsed time and return to the normal display.

02 (setting trim angle)

You can set the trim angle to zero.

Fully trim the outboard motor down.

1. Turn the engine off and the engine start switch to ON.
2. **[mode]** (4 seconds): To activate the custom mode.
3. **[mode]** (1 second): To switch between the setting function numbers and to switch to the zero adjustment display.

TACH



4. **[set] + [mode]** (1 second): To adjust the trim angle to zero using the current trim position as the standard value and return to the normal display.

NOTE:

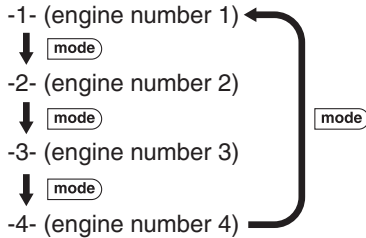
- When one segment is displayed, the trim angle of the outboard motor is adjusted to zero (full trim in).
- Press the **[set]** button for 1 second from step 3 to cancel the adjustment of the trim angle to zero and return to the normal display.

03 (setting corresponding engine)

03 (setting corresponding engine)

You can select the engines that are compatible to this meter. The port outboard motor is set to “-1- (engine number 1)” and the starboard outboard motor is set to “-2- (engine number 2).”

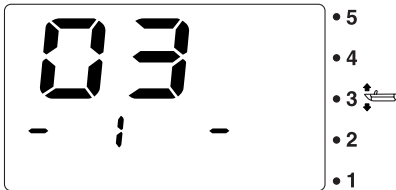
1. Turn the engine off and the engine start switch to ON.
2. **mode** (4 seconds): To activate the custom mode.
3. **mode** (1 second) (2 times): Press to switch between the setting function numbers and to switch to the change settings display.
4. **mode**: To switch between the displayed engine numbers.



NOTE: _____

- The meters are set at the factory to “-1- (engine number 1).”
- To reset an engine number, see “Resetting engine number” in “Service functions.”

TACH



5. **set** (1 second): To change the corresponding engine and return to the normal display.

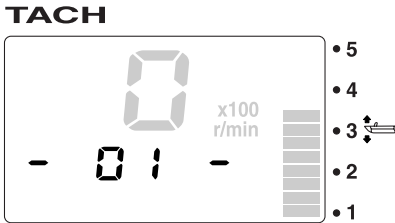
Service functions

Diagnosis

You can display the self-diagnosis results of the engine.

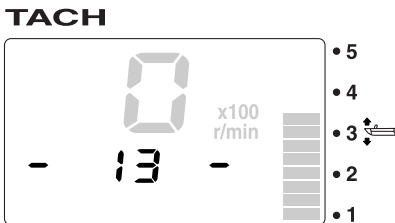
mode (10 seconds): To display the diagnosis codes.

When there are no malfunctions, the “-01-” diagnosis code is displayed.



When a malfunction occurs, the corresponding diagnosis codes, except “-01-,” are displayed.

When there are multiple diagnosis codes, press the **mode** button to display the next code number.



mode (1 second): To return to the normal display.

CAUTION:

When a diagnosis code other than “-01-” is displayed, the engine cannot be operated normally. Consult a Yamaha dealer.


NOTE:

Although the custom mode is activated after a few seconds while the **mode** button is being pressed, continue to press the button for 10 consecutive seconds to activate the diagnosis mode.

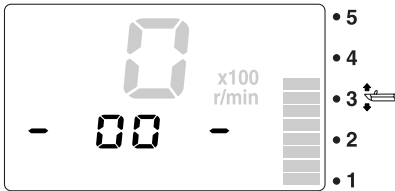
Service functions

Resetting engine number

When replacing the engines of multiple outboard motors or resetting the setting order, reset all engine numbers to “-1- (engine number 1).”

1. Turn the engine off and the engine start switch to ON.
2.  (10 seconds): “-00-” will be displayed for 1 second.

TACH



3. Turn the engine start switch to OFF. The engine number is reset after approximately 10 seconds.
4. Turn the engine start switches to ON in order from port to starboard.

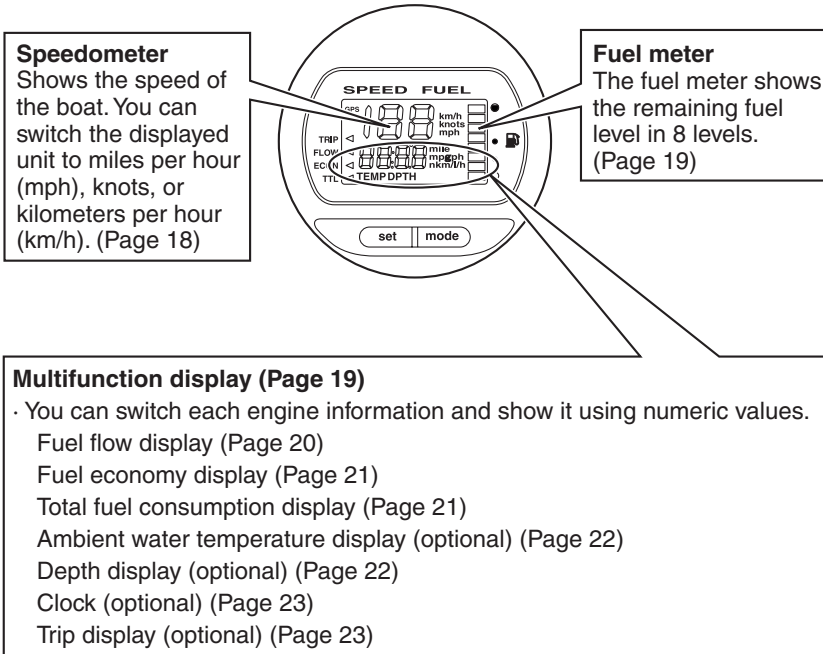
NOTE: _____

- The engine numbers are stored in the ECM (Engine Control Module) of each engine for engine identification.
 - The engine numbers are stored in the ECM (Engine Control Module) when the engine start switch is first turned to ON after being connected. The numbers are stored in order from number one to number four starting from the port outboard motor. When multiple outboard motors are installed, be sure to wait at least 2 seconds before turning each engine start switch to ON.
-

2. Speed & Fuel meter unit

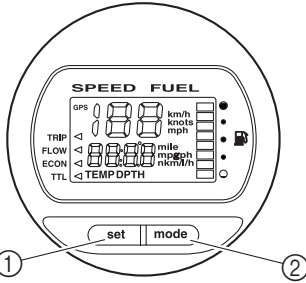
NOTE:

Depending on the model of the outboard motor, some functions may not be compatible. For information on models which contain the compatible functions, consult a Yamaha dealer.

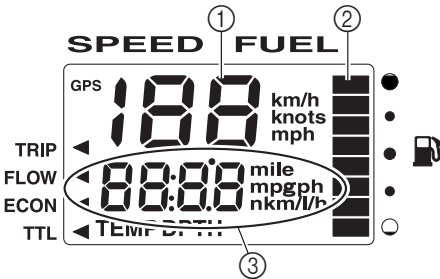


Description/Activating the meter

Description



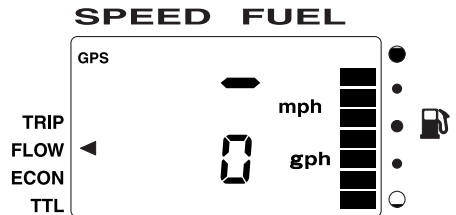
- ① set button
- ② mode button



- ① Speedometer
- ② Fuel meter
- ③ Multifunction display

Activating the meter

When the engine start switch is turned to ON, the meter is activated and "0000" appears on the multifunction meter. Then, all the displays come on and the display switches to the normal display after a few seconds.



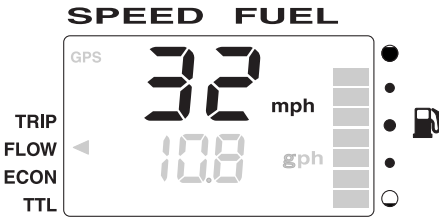
Speedometer

The speedometer shows the ground speed or the water speed of the boat.

To display the ground speed, the GPS must be connected to the meter. To display the water speed, an optional sensor (speed sensor or Triducer-Multi sensor) must be connected to the meter.

NOTE: _____

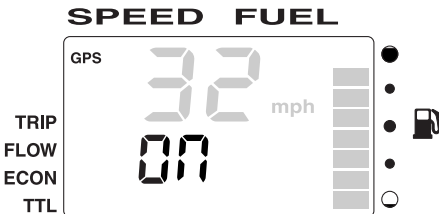
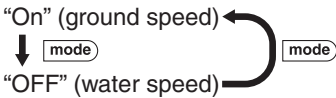
- If no operations are carried out for 30 seconds or more, the display returns to the normal display.
- When signals from the GPS cannot be received even when the GPS function is on, the GPS display goes off and the water speed is displayed.
- You can select to show miles per hour (mph), kilometers per hour (km/h), or knots on the speedometer display. To change the displayed unit, see “01 (setting displayed units)” in “Changing settings (custom mode).”



Speed & Fuel meter
unit

Switching the speed sensors:

1. **set** (4 seconds): To activate the speed sensor setting mode.
2. **mode**: Press to switch between the speed sensor types.

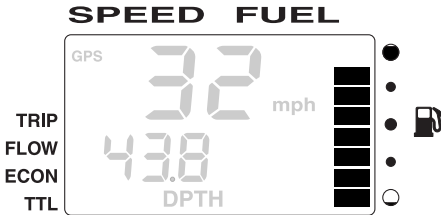


3. **set** (1 second): To set the speed sensor and return to the normal display.

Fuel meter/Multifunction display

Fuel meter

The fuel meter shows the remaining fuel level in 8 levels and all the segments are displayed when the fuel tank is full. When the fuel level is low, the last segment blinks.



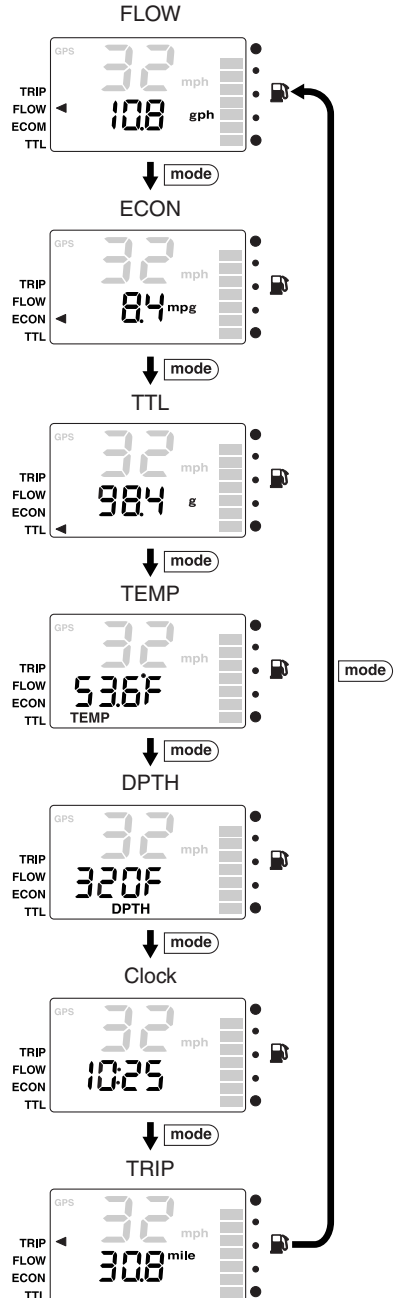
NOTE:

The fuel sensor setting can be changed according to the fuel sensor type. To change the fuel sensor setting, see “02 (setting fuel sensor)” in “Changing settings (custom mode).”

Multifunction display

The multifunction display shows various information using numeric values.

mode : Press to switch between the displays.



Fuel flow display

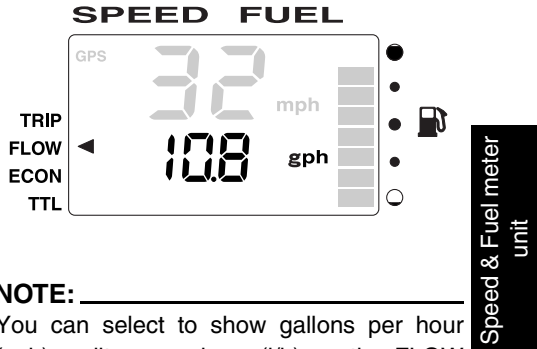
When the engine start switch is turned to OFF, the last display shown is shown first when the engine start switch is turned to ON again.

NOTE: _____

- To change the various settings, see “Changing settings (custom mode).”
- If an optional sensor is not connected to the meter, the corresponding display will not be displayed.

Fuel flow display

FLOW shows the total fuel consumption per hour of all engines.



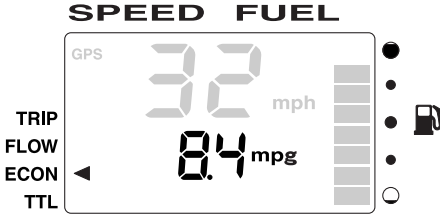
NOTE: _____

You can select to show gallons per hour (gph) or liters per hour (l/h) on the FLOW display. To change the displayed unit, see “01 (setting displayed units)” in “Changing settings (custom mode).”

Fuel economy display/Total fuel consumption display

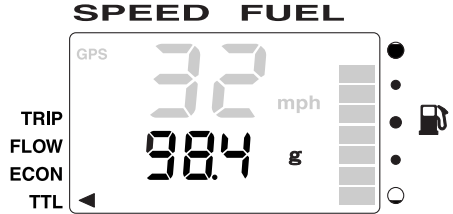
Fuel economy display

ECON shows the distance traveled per unit of fuel.



Total fuel consumption display

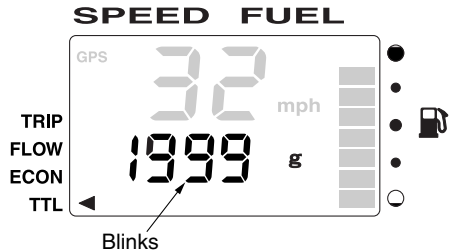
TTL shows the total fuel consumption of all engines.



NOTE:

- Fuel economy is affected by the type of boat being operated and the operating conditions, and it is constantly changing.
- You can select to show miles per gallon (mpg), nautical miles per liter (nm/l), or kilometers per liter (km/l) on the ECON display. To change the displayed unit, see “01 (setting displayed units)” in “Changing settings (custom mode).”

The TTL display cannot measure over 1,999 gallons or 1,999 liters. When there are more than 1,999 gallons or 1,999 liters of fuel, the numeric value blinks to indicate an overflow.



set + **mode** (1 second): To reset the TTL display.

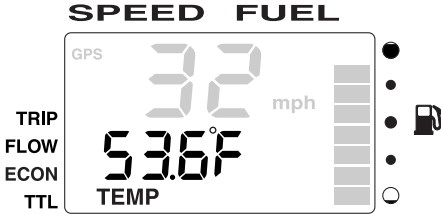
NOTE:

You can select to show gallons (g) or liters (l) on the TTL display. To change the displayed unit, see “01 (setting displayed units)” in “Changing settings (custom mode).”

Ambient water temperature display/Depth display

**Ambient water temperature display
(optional: Triducer-multi sensor has
been installed)**

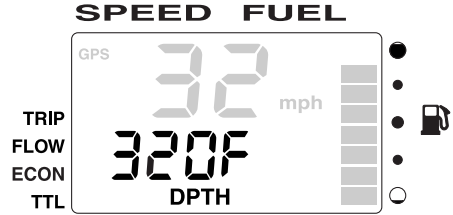
TEMP shows the ambient water temperature.



NOTE: _____
You can select to show Fahrenheit (°F) or Celsius (°C) on the TEMP display. To change the displayed unit, see "01 (setting displayed units)" in "Changing settings (custom mode)."

**Depth display (optional: Triducer-multi
sensor has been installed)**

DPTH shows the water depth.



NOTE: _____
You can select to show feet (F) or meters (m) on the DPTH display. To change the displayed unit, see "01 (setting displayed units)" in "Changing settings (custom mode)."

Speed & Fuel meter
unit

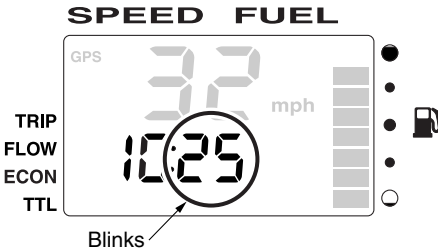
Clock/Trip display/Changing backlight settings

Clock (optional: GPS has been installed)

The clock shows the time in 12 hours. The local time is easily displayed by calculating the longitude information received from the GPS communication data. Set the time as necessary.

Setting the time:

1. **set**: To activate the time setting mode and switch to the time setting display.



2. **mode**: To change the minutes. Press and hold to advance quickly.
3. **set**: To set the hours.
4. **mode**: To change the hours. Press and hold to advance quickly.
5. **set**: To set the time and return to the normal display.

Resetting the time:

1. **set**: To activate the time setting mode and to switch to the time setting display.
2. **set** + **mode** (1 second): To reset the time to "0:00" and return to the normal display.

Trip display (optional: speed sensor has been installed)

TRIP shows the information from the speed sensor converted to the distance traveled.



1. **set** + **mode** (1 second): To reset the distance traveled.

NOTE:

- The distance traveled is affected by currents and other operating conditions and may differ from the actual distance traveled.
- You can select to show miles (mile), nautical miles (nm), or kilometers (km) on the TRIP display. To change the displayed unit, see "01 (setting displayed units)" in "Changing settings (custom mode)."

Changing backlight settings

You can turn the backlight on or off, or change the brightness level of the backlight for all meters collectively.

NOTE:

The backlight setting procedure is the same as that of the tachometer unit. To change the backlight settings, see "Changing backlight settings" in "1. Tachometer unit."

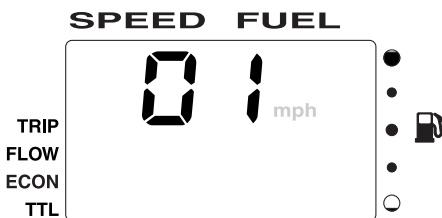
Changing settings (custom mode)/01 (setting displayed units)

Changing settings (custom mode)

Switching to custom mode

In the custom mode, you can change the meter function settings. Each setting function number is displayed in the speedometer display.

1. Turn the engine off and the engine start switch to ON.
2. **[mode]** (4 seconds): To activate the custom mode.



3. **[mode]** (1 second): Press to switch between the setting function numbers and to switch to the change settings display.

- 01 (setting displayed units)
 - ↓ **[mode]** (1sec.)
- 02 (setting fuel sensor)
 - ↓ **[mode]** (1sec.)
- 03 (setting correction value)
 - ↓ **[mode]** (1sec.)

4. Change each setting and return to the normal display. To change the settings, see the corresponding sections for each setting function.

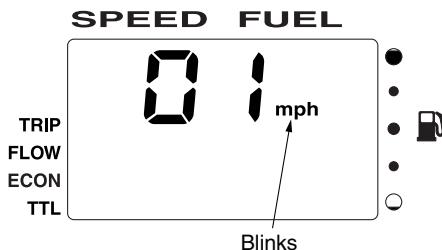
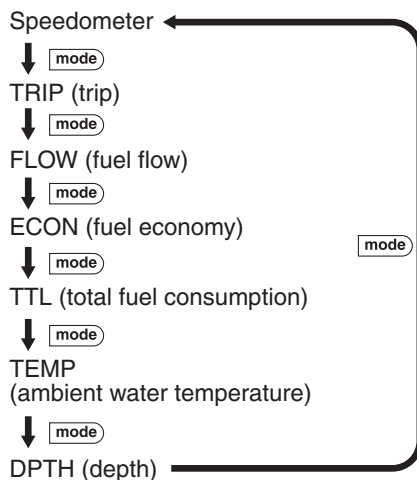
NOTE:

If no operations are carried out for 30 seconds or more or if the engine is started, the settings will not be applied and the display returns to the normal display.

01 (setting displayed units)

You can change the units that are shown in each display. The indicator of the selected display blinks.

1. Turn the engine off and the engine start switch to ON.
2. **[mode]** (4 seconds): To activate the custom mode and to switch to the change settings display.
3. **[mode]**: Press to switch between the displays.



- * In the display example, the speedometer is shown.

Speed & Fuel meter unit

01 (setting displayed units)

4. **set**: Press to switch between the displays. In addition, you can select to not show the display.

Speedometer

You can select to show miles per hour (mph), kilometers per hour (km/h), or knots. The default setting is miles per hour (mph).

TRIP

You can select to show miles (mile), nautical miles (nm), kilometers (km), or not to show the display. The default setting is miles (mile).

FLOW

You can select to show gallons per hour (gph), liters per hour (l/h), or not to show the display. The default setting is gallons per hour (gph).

ECON

You can select to show miles per gallon (mpg), nautical miles per liter (nm/l), kilometers per liter (km/l) or not to show the display. The default setting is miles per gallon (mpg).

TTL

You can select to show gallons (g), liters (l), or not to show the display. The default setting is gallons (g).

TEMP

You can select to show Fahrenheit (°F), Celsius (°C), or not to show the display. The default setting is Fahrenheit (°F).

DPTH

You can select to show feet (F), meters (m), or not to show the display. The default setting is feet (F).

5. **set** (1 second): To change the displayed unit and return to the normal display.

NOTE: _____

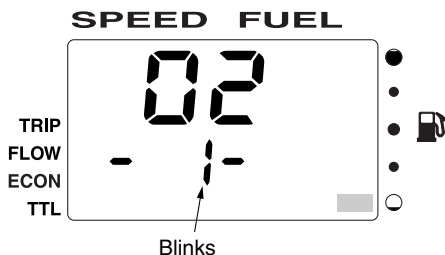
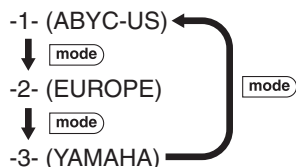
- When the speedometer unit settings are changed, the TRIP, FLOW, ECON, TTL, TEMP, and DPTH unit settings are collectively changed automatically. To change the settings for each displayed unit individually, repeat steps 3 and 4.
 - Press the **set** and **mode** buttons simultaneously for 1 second from step 2 to reset all displayed units to the default settings.
-

02 (setting fuel sensor)/03 (setting correction value)

02 (setting fuel sensor)

You can set the fuel sensor type that is connected to this meter.

1. Turn the engine off and the engine start switch to ON.
2. **mode** (4 seconds): To activate the custom mode.
3. **mode** (1 second): To switch between the setting function numbers and to switch to the change settings display.
4. **mode**: Press to switch between the fuel sensor types.



5. **set** (1 second): To change the fuel sensor type and return to the normal display.

03 (setting correction value)

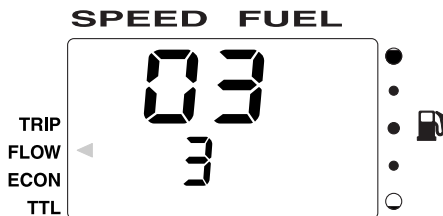
You can calibrate the displayed fuel flow value within -7 to $+7$ percent. The difference in the fuel consumption display and the actual fuel consumption is calibrated.

Checking the calibration value:

1. Operate the outboard motor on a full tank of fuel.
2. After operating the outboard motor, fill the fuel tank. Compare the amount of fuel filled into the fuel tank with the fuel consumed shown on the fuel consumption display and set the calibration value to the difference if necessary.

Changing the calibration value:

1. Turn the engine off and the engine start switch to ON.
2. **mode** (4 seconds): To activate the custom mode.
3. **mode** (1 second) (2 times): Press to switch between the setting function numbers and to switch to the change settings display.
4. **mode**: Press to switch between the calibration values.



5. **set** (1 second): To change the calibration value and return to the normal display.

Speed & Fuel meter
unit

03 (setting correction value)

NOTE: _____

- The fuel flow display may differ depending on the operating conditions.
 - When the fuel flow calibration value is changed, the FLOW, TTL, and ECON displays are shown calibrated.
-

Activating for the first time/Setting the initial settings

3. Setting up the meters

To install the meters and the optional sensors and to connect the meters to the engine, see the “Command Link Multifunction Meter Installation Manual.”

Be sure to follow the procedures in “Activating for the first time” and “Setting the initial settings.” If the procedures are performed incorrectly, the engine number will change, resulting in improper operation.

1. Installing the meters
2. Connecting the meters to the engine
3. Installing an optional sensor
4. Activating for the first time
5. Setting the initial settings

If the procedures are performed incorrectly, see “Service functions” in “1. Tachometer unit” to reset all of the engine numbers. Check the connections, and follow the setup procedures again to set up the meters.

Activating for the first time

After installing the meters, be sure to turn the engine start switch to ON when the power is supplied for the first time. When multiple outboard motors are installed, be sure to turn the engine start switch to ON from the port outboard motor and to wait at least 2 seconds before turning each engine start switch to ON.

NOTE:

- The engine number of the engine whose engine start switch was first turned to ON is stored in the ECM (Engine Control Module) of the engine as the port engine (engine number 1).
- To reset an engine number, see “Resetting engine number” under “Service functions” in “1. Tachometer unit.”

Setting the initial settings

Before operating the meter, be sure to change the default settings as described below. For the setting procedures, see the corresponding setting procedure for each meter.

Tachometer unit

03 (setting corresponding engine)

Select the engines compatible to this meter. (See page 13.)

02 (setting trim angle)

Adjust the trim angle to zero. (See page 12.)

Speed & Fuel meter unit

02 (setting fuel sensor)

Set the fuel sensor according to the fuel tank type. (See page 26.)



YAMAHA MOTOR CO., LTD.

Printed in Japan

March 2005 – 1.0 × 1 CR

(E)

Printed on recycled paper