

GW INSTEK

0.000s

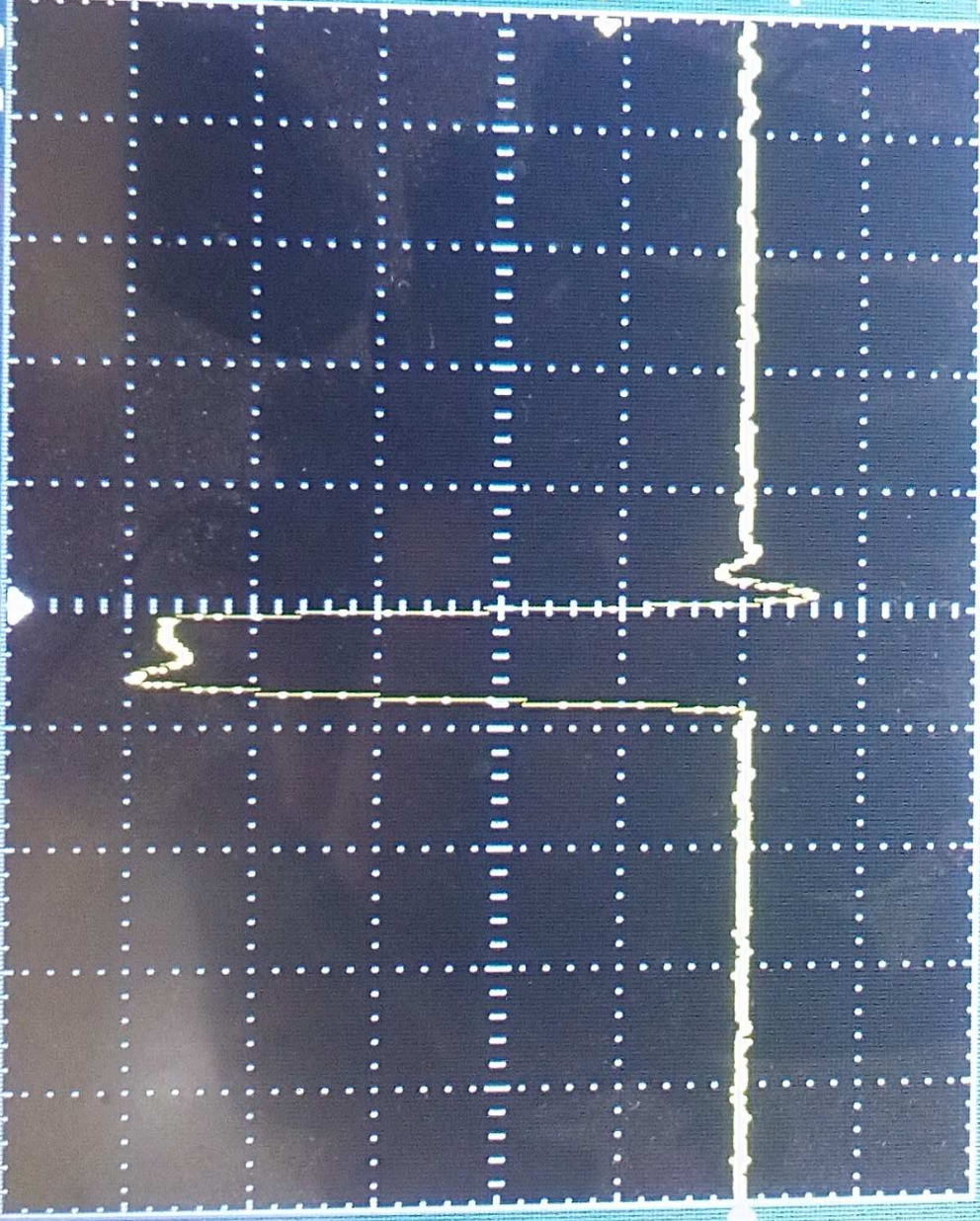
Stop

CH2

Coupling

Invert
Off

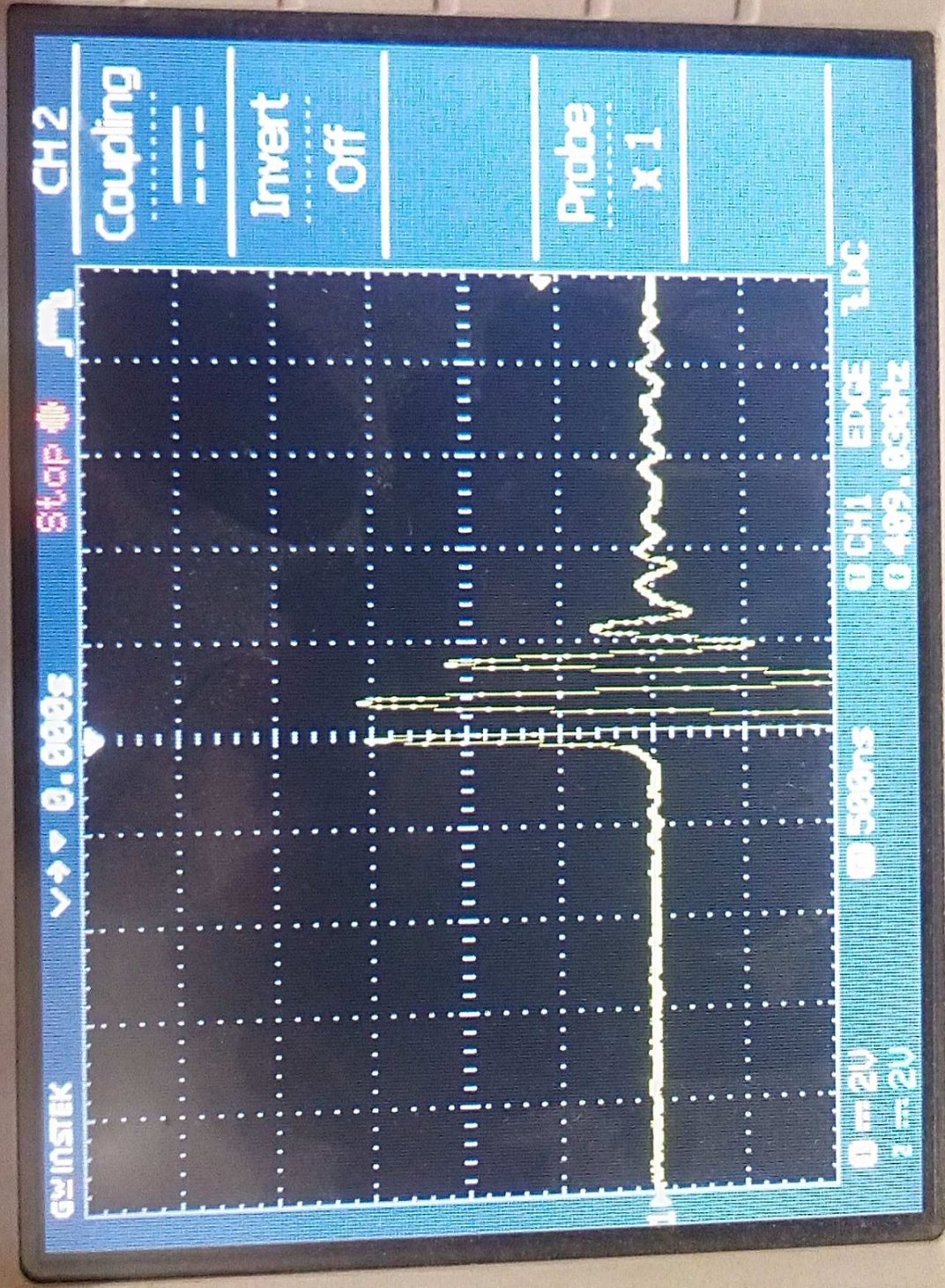
Probe
x1



0 = 2V
1 = 2V

500ns

0 CH1 EDGE 1.0C
0.377.50MHz



500
≈2V Γ

POWER
-1.50

GW INSTEK

0.000s

Stack

CH2

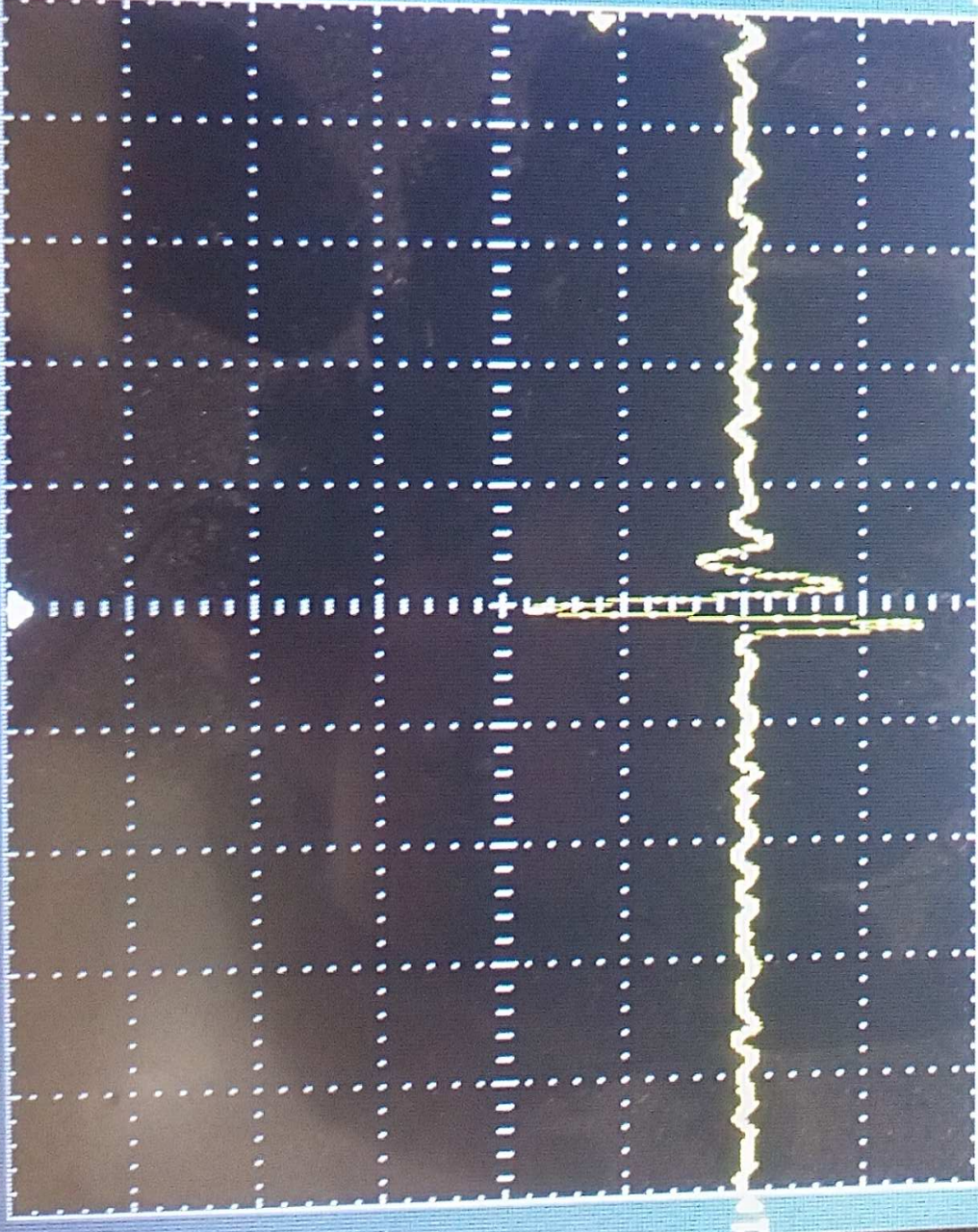
Coupling

Invert

Off

Probe

x1



0 = 2V
1 = 2V

500ns

0 CH1 EDGE 1DC
0.527 276Hz

CH2

Coupling

Invert

Off

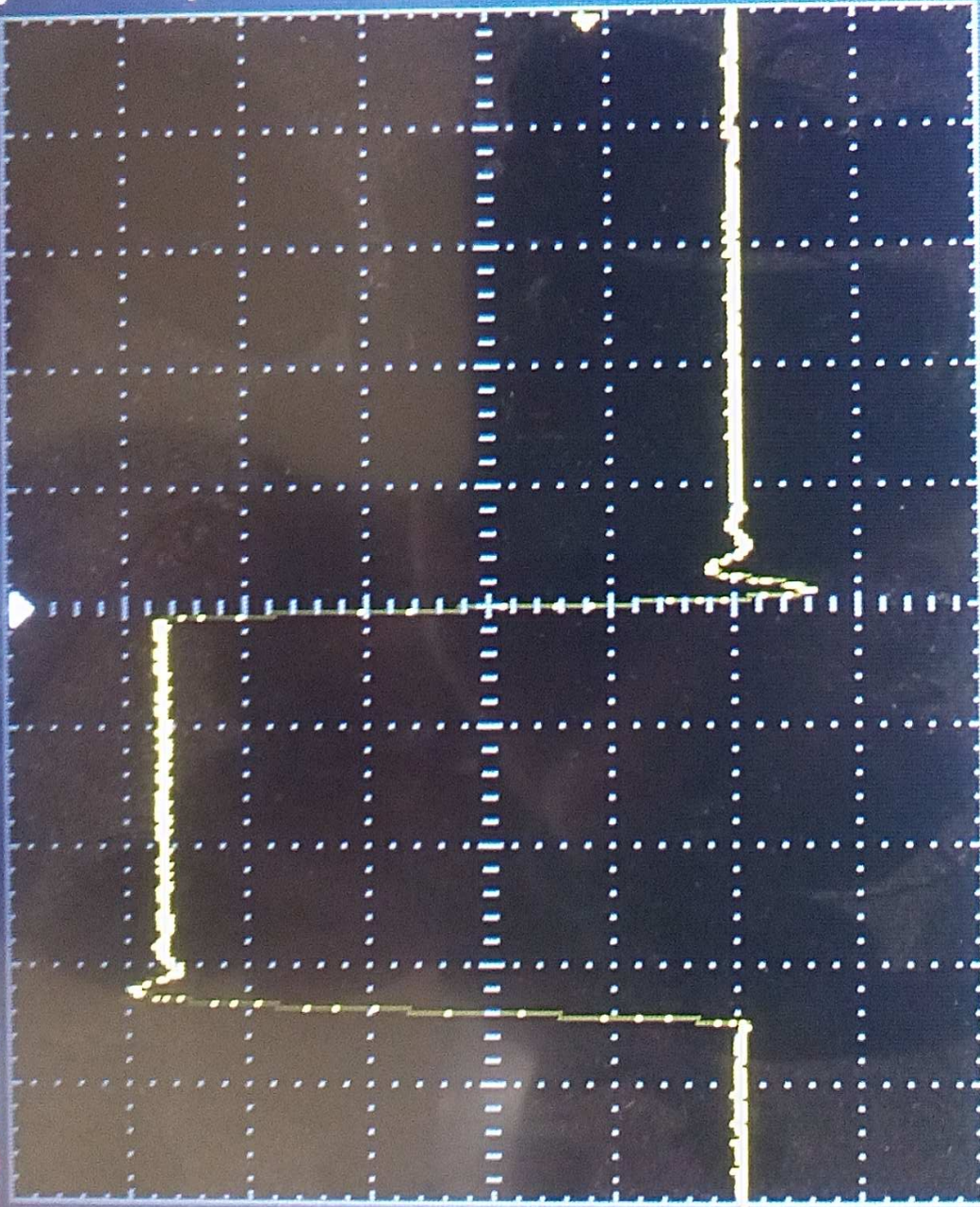
Probe

x 1

Stop

0.000s

GW INSTEK



1DC

0 CH1 EDGE

0 291.524Hz

500ns

0 = 2V

1 = 2V