



# February 2018 Monthly Newsletter



9800 Chicago Heights  
St. Louis, MO 63132  
www.primmplace.com



## Community Staff

LeKeila Hudson, Community Manager  
Andree Lewis, Assistant Manager  
Howard Matlock, Porter

## Office Information

Office Phone: (314) 692-7192  
Office Fax: (314) 692-0503

## Office Hours

Monday thru Friday: 8:30AM - 5:30PM  
Saturday: Closed  
Sunday: Closed

## Important Phone Numbers

Emergency Maintenance:  
(314) 692-7192  
Poison Control: (800) 222-1222  
Asset Towing: (314) 429-5800  
Non-Emergency Police Department:  
(314) 567-9926  
Emergency Fire, Police or Ambulance:  
911

**Thank You** to all our residents who renewed their lease! We're excited that you continue to make Primm Place your home. And a BIG Welcome to ALL our new residents! We are happy that you chose Primm Place to be your home!

## Local Events

### *Smile Fest*

February 2, 2018 at 1100 Macklind Ave. St. Louis, MO 63110 from 4:00pm - 7:00pm. Contact info@stlouisdental.org for coupon for Free Family admission (Good only for February 2, 2018).

## Early Bird Contest

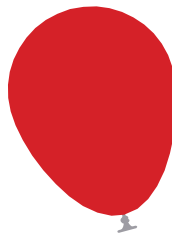


Pay your rent before the 1st of each month to be entered to win

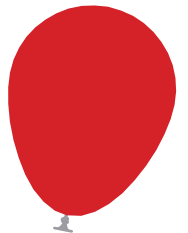
**\$100 OFF YOUR NEXT MONTH'S RENT!**

Congrats to last month's winner

**Lanetta C.**



# Happy Birthday to our residents!



Michelle M., 2nd  
Marquise S., 2nd  
Janice C., 3rd  
Justin C., 4th  
Davionna C., 5th  
Jasmine L., 6th  
Tameka A., 6th  
Destiny M., 6th

Bridgette W., 8th  
Jada L., 9th  
Diamond W., 10th  
Bobby A., 14th  
Hunter R., 14th  
Tashira B., 14th  
Jcolby T., 14th  
Raleigh D., 14th

Joyce C., 16th  
Shanita B., 16th  
Kameron E., 19th  
Lanobie L., 22nd  
Robin K., 23rd  
Jesse W., 23rd  
Carvon S., 25th  
Tailin W., 25th  
Ashley Y., 28th

## EARLY BIRD CONTEST ENTRY FORM

Name: \_\_\_\_\_  
Apt: \_\_\_\_\_  
Phone: (\_\_\_\_) \_\_\_\_\_ - \_\_\_\_\_



CUT Make sure to cut the above portion and attach it



# FEBRUARY 2018



| Sunday        | Monday   | Tuesday                           | Wednesday       | Thursday   | Friday   | Saturday      |
|---------------|--|-----------------------------------|-----------------|--|--|---------------|
|               |  |                                   |                 | Rent Due! <sup>1</sup><br>Pest Control                     | <sup>2</sup><br>Be an Early Bird! Pay your next month's rent today!<br><br>Groundhog Day | <sup>3</sup>  |
| <sup>4</sup>  | <sup>5</sup>   | <sup>6</sup><br>Renew your lease! | <sup>7</sup>    | <sup>8</sup><br>Pest Control                               | <sup>9</sup>   | <sup>10</sup> |
| <sup>11</sup> | <sup>12</sup>  | <sup>13</sup>                     | <sup>14</sup>   | <sup>15</sup><br>Pest Control                              | <sup>16</sup>  | <sup>17</sup> |
|               | Lincoln's Birthday   | Mardi Gras                        | Valentine's Day |  |  |               |
| <sup>18</sup> | <sup>19</sup><br>Refer Friends & Family to Primm Place!<br><br>President's Day | <sup>20</sup>                     | <sup>21</sup>   | <sup>22</sup><br>Pest Control<br><br>Washington's Birthday | <sup>23</sup>  | <sup>24</sup> |
| <sup>25</sup> | <sup>26</sup>  | <sup>27</sup>                     | <sup>28</sup>   |  |  |               |



# February Word Search



P U E S F Q E U S P B E M D H  
 B M W C R A E A E E L J P E D  
 N L P Z I V U J I D X Q A D O  
 T M Y K E Q A O R R I R U H S  
 F D E F N L K L R U T P M T S  
 R W Z B D J B T E S C U U R D  
 P R O T S F Q S B N M V Q C R  
 P R T H M T U V W B T O Z E A  
 H U G S R L Y R A K E I V F C  
 S Z T Z A D E I R K D O N X Y  
 L V Y W U P G G T V L B K E M  
 G P L L F L C E S L V A P Y J  
 G R O U N D H O G D A Y P R Q  
 V S R K E B Y J P G I J A S T  
 V Y N C Q C L Y D N A C D L B

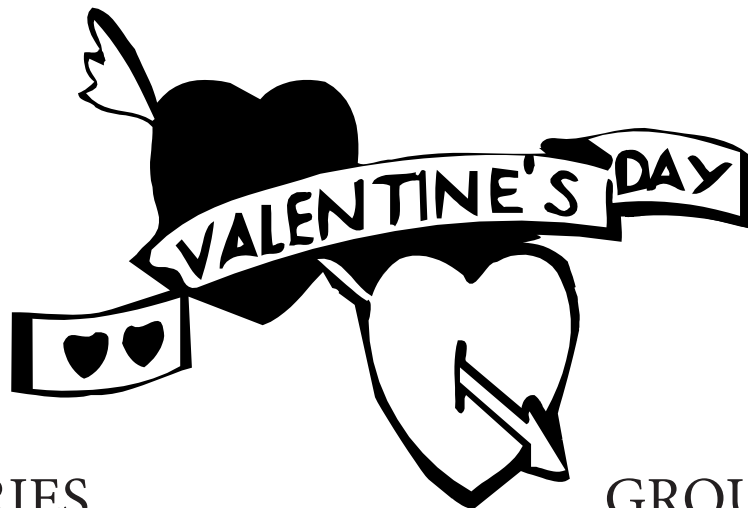
LOVE

VALENTINE

HEARTS

CANDY

STRAWBERRIES



CUPID

CARDS

FRIENDS

HUGS

GROUNDHOG DAY



Refer your Family, Friends and  
Co-Workers to live at  
Primm Place Apartments  
and you will receive

**\$200 OFF\***

**ONE MONTH'S RENT!**

\*Referral reward will be given after your referral leases and pays their first month's full rent. Referral must include your name and apartment number with their application. **Must lease and move-in by March 5, 2018.** This offer excludes renewal leases. See office for more details.



**(314) 692-7192**

9800 Chicago Heights Blvd.,  
St. Louis, MO 63132



[www.primmplace.com](http://www.primmplace.com)

