



April 2018 Monthly Newsletter



Local Events



VERMONTVILLE MAPLE SYRUP FESTIVAL

Friday-Sunday, April 27th-29th

Celebrate 78 years at Michigan's original Maple Syrup Festival. Enjoy pancakes with real maple syrup, rides, talent show, arts and crafts, flea market, two parades, petting zoo, princess pageant, fireworks displays, 5K run, games and more. Syrup producers are located throughout the village selling syrup, candies, crème and the

ever-popular maple syrup **COTTON CANDY**.

For more information, call 888-482-8780 or visit www.vermontvillemaplesyrupfestival.org

2790 Sirhal Drive
East Lansing, MI 48823
www.meridianstratford.com



Community Staff

Lisa Darrow, Community Manager
Eldean Hummel, Maintenance
Elynn Hummel, Maintenance

Office Information

Office Phone: (517) 333-2472
Office Fax: (517) 333-7179

NEW Office Hours

Monday, Thurs, Friday: 1:30PM - 5:30PM
Tuesday & Wednesday 9:30AM-12:30PM
Saturday: Closed
Sunday: Closed

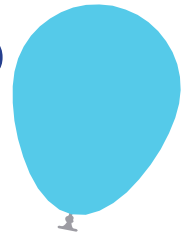
Important Phone Numbers

Poison Control: (800) 222-1222
Non-Emergency Police Department:
(517) 347-5060
Emergency Maintenance: (517) 333-2472
Emergency Fire, Police or Ambulance:
911

The BWL Electric Meters will be changed on the morning of Thursday, April 12th.



Happy Birthday to our Residents!



Ramona M., 1st
Janie O., 13th
Donald P., 15th

Birthday Potluck

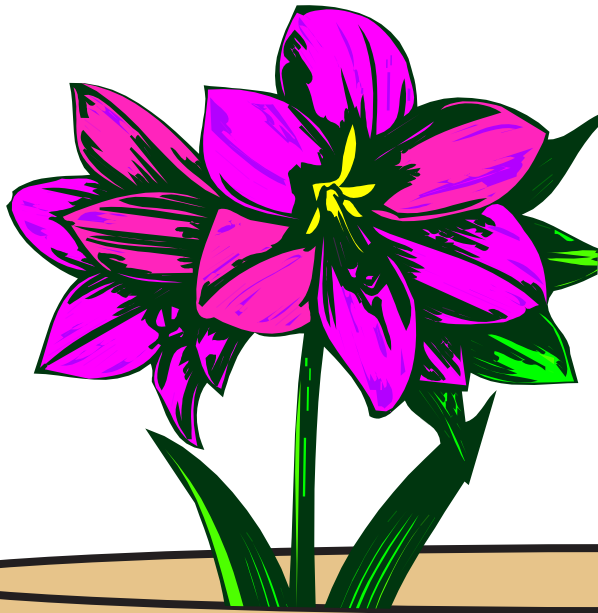
Friday, April 20th at 1:00PM



Thank You to all our residents who renewed their lease! We're excited that you continue to make Meridian Stratford Place your home. And a BIG Welcome to ALL our new residents! We are happy that you chose Meridian Stratford Place to be your home!

APRIL 2018

Sunday	Monday	Tuesday	Wednesday	Thursday	Friday	Saturday
1 Rent Due! Easter Sunday April Fool's Day	2 Walmart Shuttle 1:05PM & 3:55PM Chair Exercise 3rd floor 3:00PM	3 Shopping Bus 12:20PM Bingo 1:30PM Pest Control	4 Book Mobile 1:00PM-1:30PM	5 Walmart Shuttle 1:05PM & 3:55PM	6 <i>Rent is Late! Late Fees Applied</i>	7 Euchre 7:00PM
8	9 Walmart Shuttle 1:05PM & 3:55PM Chair Exercise 3rd floor 3:00PM	10 <i>Rent is Late! Files are sent to the Attorney</i> Shopping Bus 12:20PM Bingo 1:30PM	11 Schwan's Home Service 11:00AM-2:00PM Book Mobile 1:00PM-1:30PM	12 <i>BWL Electric Meters will be changed today</i> Blood Pressure Check-3rd floor 11AM Walmart Shuttle 1:05PM & 3:55PM	13	14
15	16 Walmart Shuttle 1:05PM & 3:55PM Chair Exercise 3rd floor 3:00PM	17 Shopping Bus 12:20PM Bingo 1:30PM	18 Book Mobile 1:00PM-1:30PM	19 Walmart Shuttle 1:05PM & 3:55PM	20 Birthday Potluck 1:00PM	21
22 Earth Day	23 Walmart Shuttle 1:05PM & 3:55PM Chair Exercise 3rd floor 3:00PM	24 Shopping Bus 12:20PM Bingo 1:30PM	25 Schwan's Home Service 11:00AM-2:00PM Book Mobile 1:00PM-1:30PM Administrative Professionals Day	26 Blood Pressure Check-3rd floor 11AM Walmart Shuttle 1:05PM & 3:55PM	27	28
29	30 Walmart Shuttle 1:05PM & 3:55PM Chair Exercise 3rd floor 3:00PM	 <p style="text-align: center;">Medical Appointment Transportation Available FREE within Ingham, Clinton and Eaton Counties. Contact William at 517-333-3282. Advanced notice required.</p>				



CARNATION
CHRYSANTHEMUM
DAFFODIL
DAISY
IRIS
LILAC
LILY
ORCHID
ROSE
SUNFLOWER
TULIP
VIOLET

April Word Search

Y	H	N	B	C	P	T	Z	B	K	X	L	C	X	L
S	I	R	I	I	E	Y	Y	E	F	F	H	K	W	I
E	H	G	C	L	L	L	L	W	Q	R	Z	W	K	D
V	H	R	O	G	O	I	I	J	Y	X	N	L	X	O
W	R	I	E	A	W	L	L	S	K	K	P	V	H	F
D	V	E	P	S	T	Y	A	L	Y	L	C	E	J	F
K	A	S	W	U	O	N	C	W	S	I	K	Q	G	A
N	G	I	L	O	T	R	A	U	G	O	S	S	H	D
E	H	I	S	H	L	E	T	N	B	Q	M	L	L	H
D	P	V	E	Y	P	F	O	R	C	H	I	D	M	B
T	X	M	K	A	X	G	N	Y	N	B	F	D	Z	W
N	U	J	N	C	T	D	T	U	T	Q	D	D	W	A
M	H	B	C	M	J	R	C	F	S	M	U	N	U	G
Y	W	T	X	U	C	U	S	V	X	U	S	F	Y	Q
S	W	N	O	I	T	A	N	R	A	C	I	P	K	Z