

Contact us

E-mail us to support@hviewsmart.com

Official Website www.hviewsmart.com/support

To register, please like us on our Facebook

<https://www.facebook.com/HVIEW.Smart>

Receive free and exclusive discounted products to test and review.

Get more camera usage tips, please search "HVIEW Smart" on Youtube

Access the Camera by Smart phones

www.hviewsmart.com

1. Install the APP AVIEW

Search "AVIEW" in App store (for iOS), or Google play (for Android) download and install the app.

2. Add the device to AVIEW

Important: The camera will not allow remote access after connected 15 mins. It needs reboot the camera to connect Phone APP again.



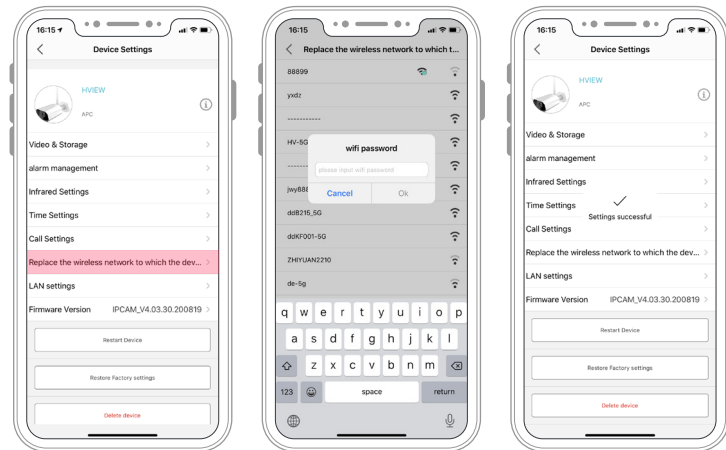
1. Launch the App "AVIEW"
2. Enter the phone number or Email address to create the account and log in
3. Then click Add device, Scan the QR code which on the camera body.
4. Then name your device and click Save, the camera will be add successfully.

3. WIFI Camera Setting

This setting is for H.VIEW WIFI camera, the PoE camera doesn't come with WIFI function.

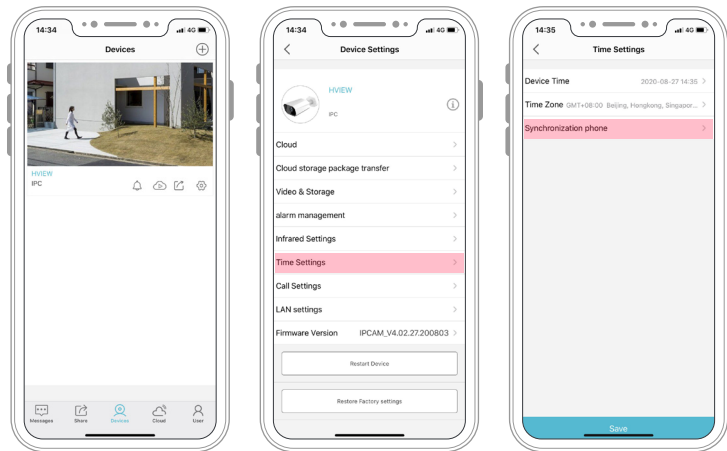
Click the setting icon → Choose Replace the wireless network → choose the correct WIFI Enter the WIFI password and Save.

Then the WIFI camera can unplug the Ethernet cable, the camera will work with WIFI connection.



4. Sync the camera time

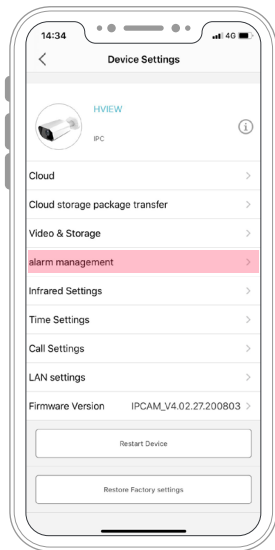
Click the setting icon → Choose Time Setting → Synchronization phone
Then the camera time will sync with the phone time.



5. Set up the Smart Detection Alarm

Click the setting icon → Choose alarm management → Choose the type of alarm.
Then you will get a notification in phone when camera trigger the motion detection event.

Notice: Close the notification, please get in the phone setting to change the authorized of AVIEW notification.

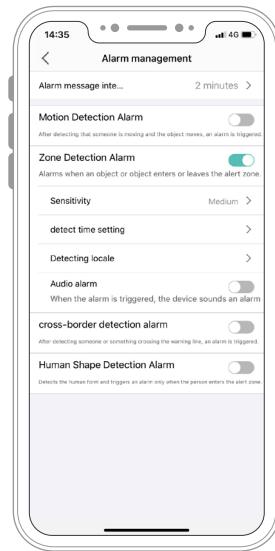


1 Motion Detection Alarm



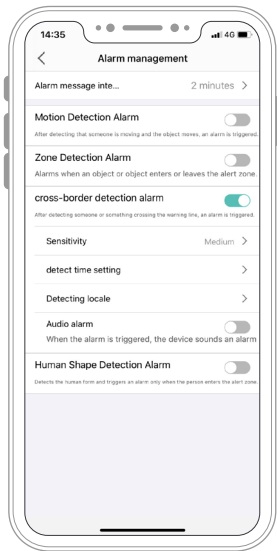
Choose the Sensitivity and set the detect time and locale, then it will alarm when the image has change.

2 Zone Detection Alarm



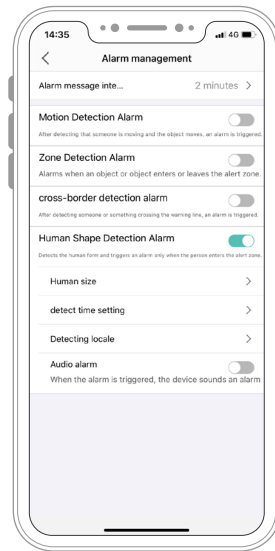
Choose the Sensitivity and set the detect time and locale, then it will alarm when an object or object enters or leaves the alert zone.

3 Cross-border detection Alarm

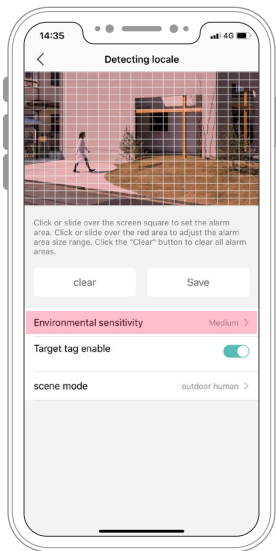


Choose the Sensitivity and set the detect time and warning line, it will alarm after detecting someone or something crossing the warning line.

4 Human Shape Detection Alarm



According to the camera view to set up the adjustable Human size, detect time and detecting locale, then it will detect the human form and triggers an alarm only when the person enters the alert zone.



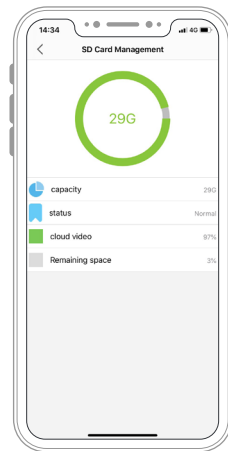
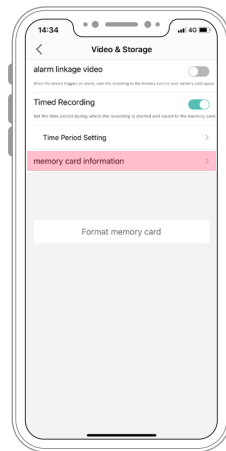
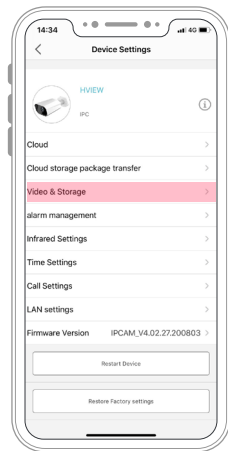
Notice: The Environmental sensitivity more lower, it maybe detect other object which is not human, but if you set it more higher, it can detect more accurate human.

6. Set up the SD card Record

Before you set up the record, please follow the below step to confirm that you already insert the SD card.

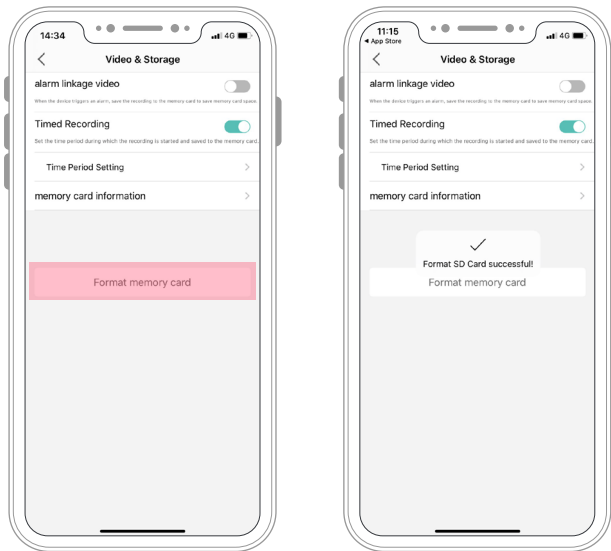
01. Check the card information

Tap the Video&Storage → memory card information, check the card information



02. Format memory card

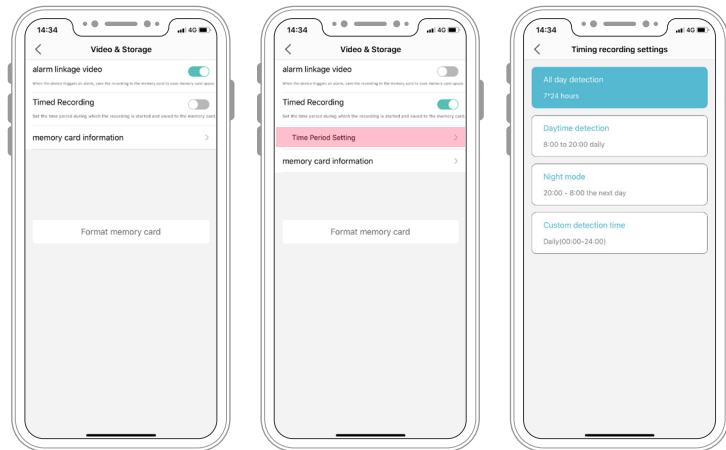
Back to Video&Audio → Tap Format memory card, then it will show "Format SD card successfully"



03. Choose the Record Type

Back to Video&Audio setting, here has 2 options of recording.

- (1) alarm linkage video, the camera will record when the motion was detected.
- (2) Time Recording, the camera will record under the time period that you set.



7. Play back the video

Click the setting icon → Tap the playback

Red represents alarm linkage video

Bule represents Time Recording

