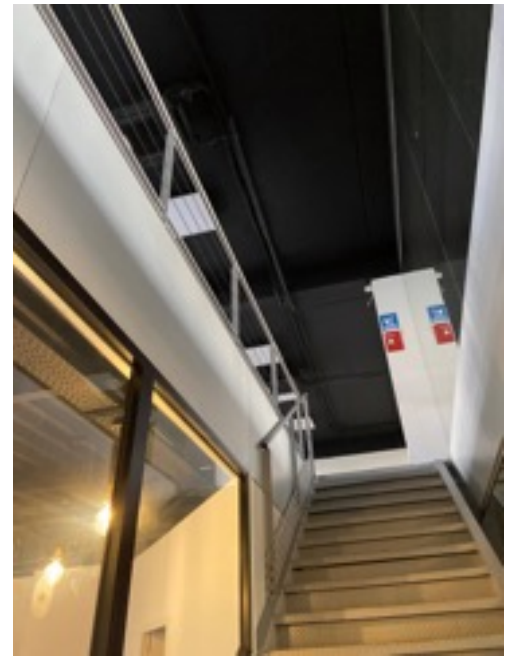


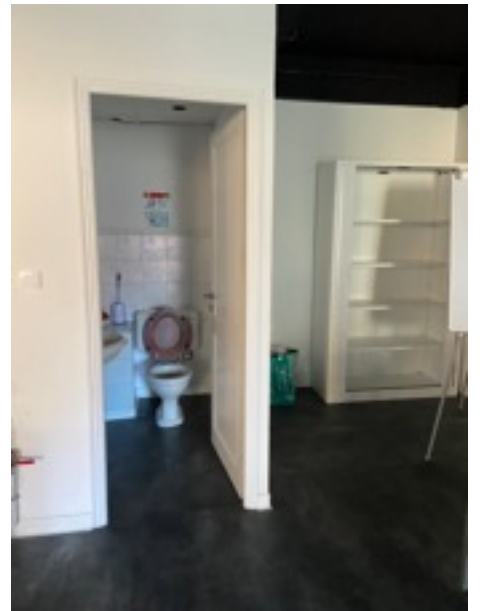
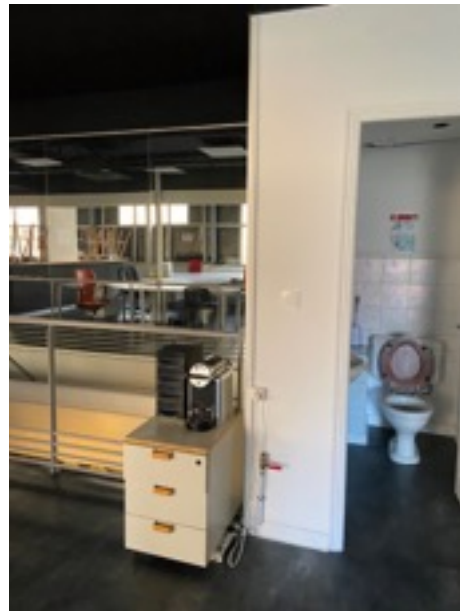
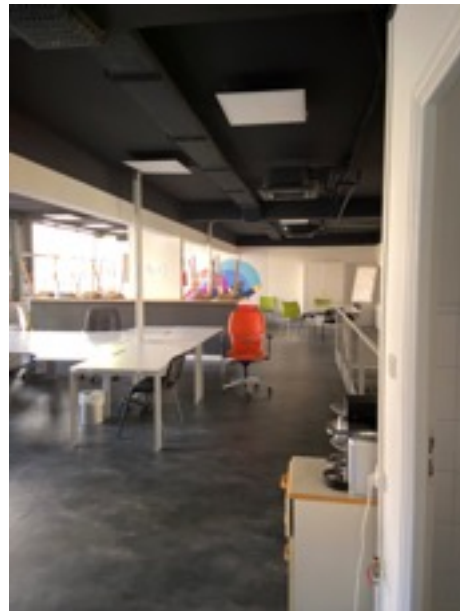
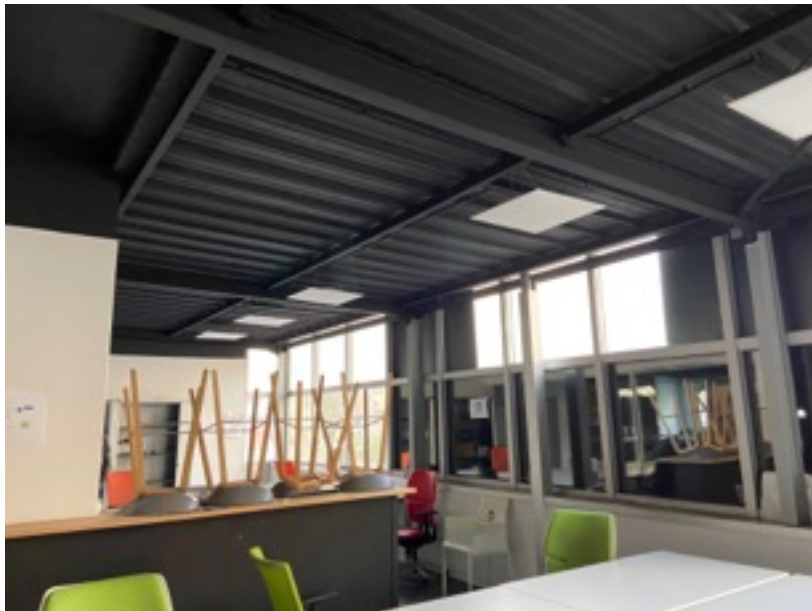
# DCE

- Photos de l'existant
- Plan construction RDC / R+1
- Plan électrique RDC / R+1

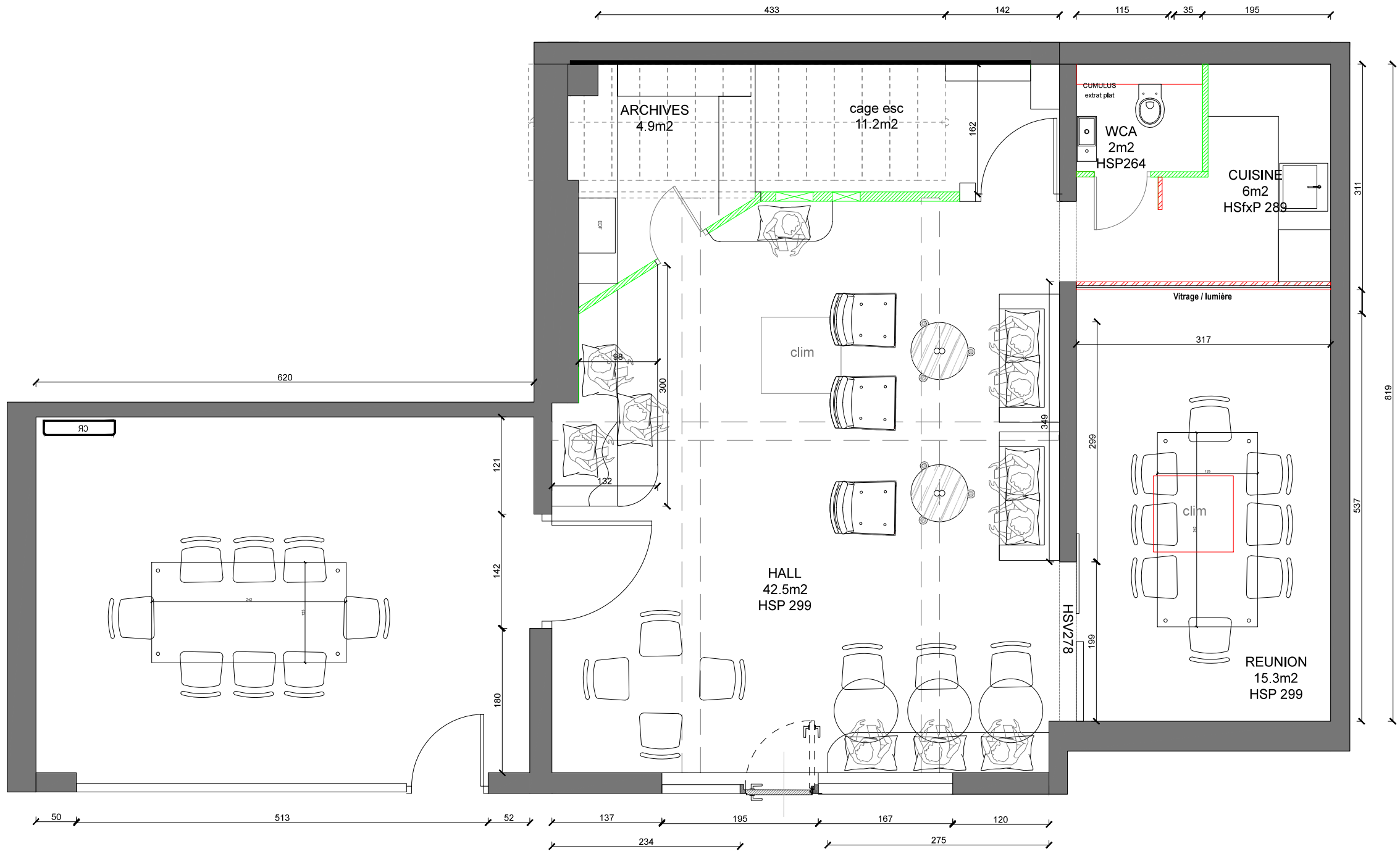
RDC



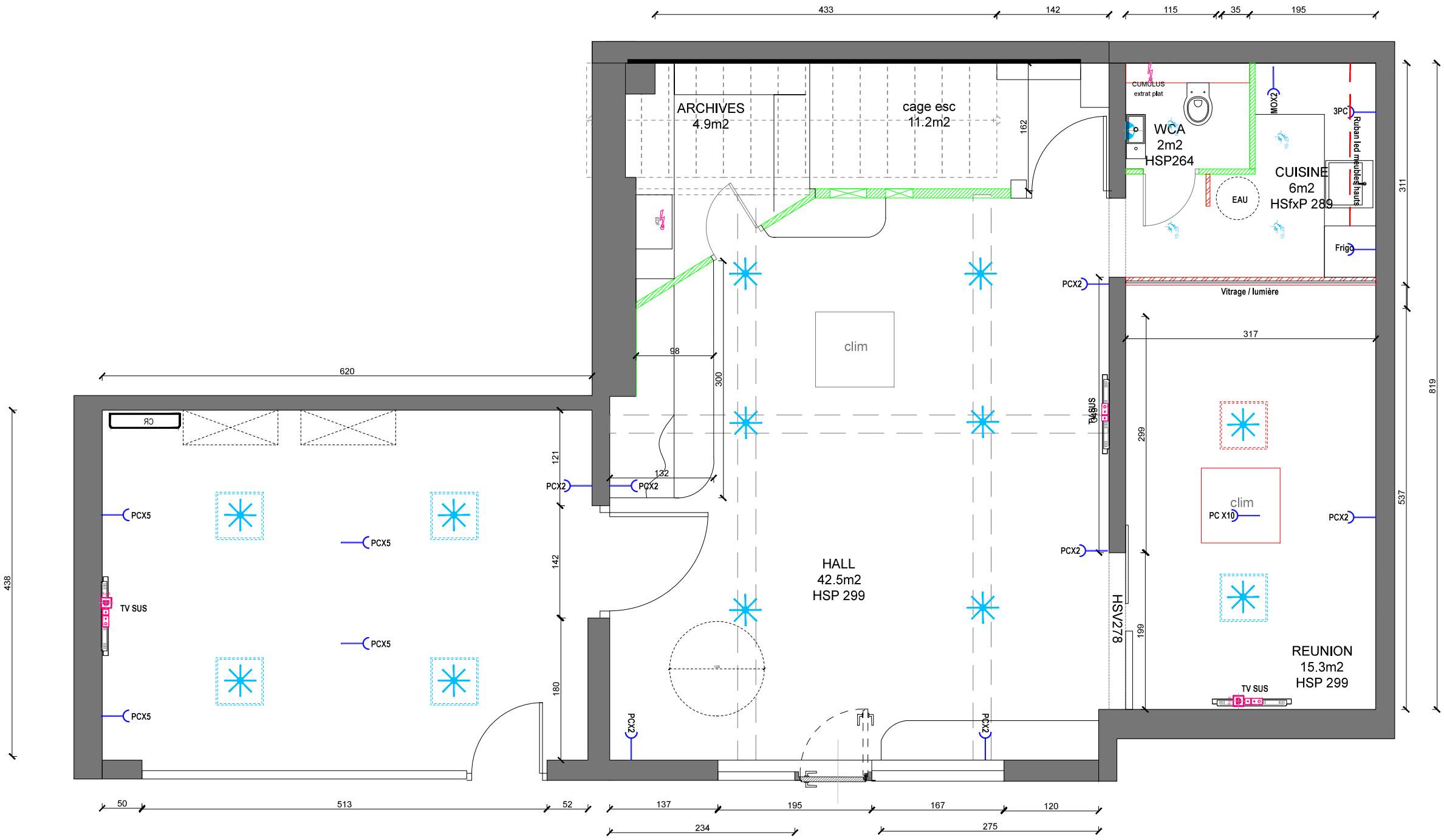
R+1



Visite nécessaire pour chiffrage



107m<sup>2</sup>

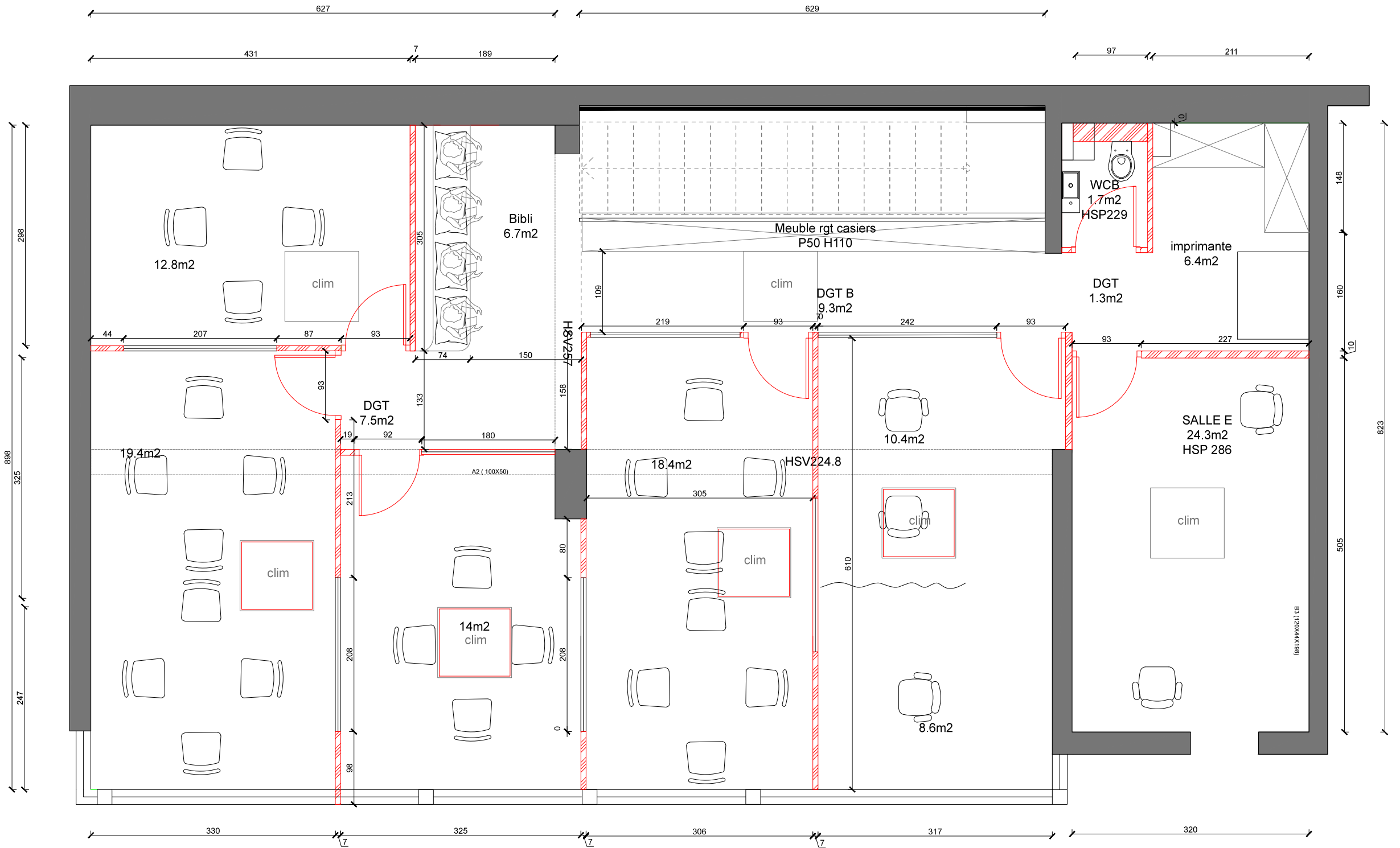


# RDC ELEC

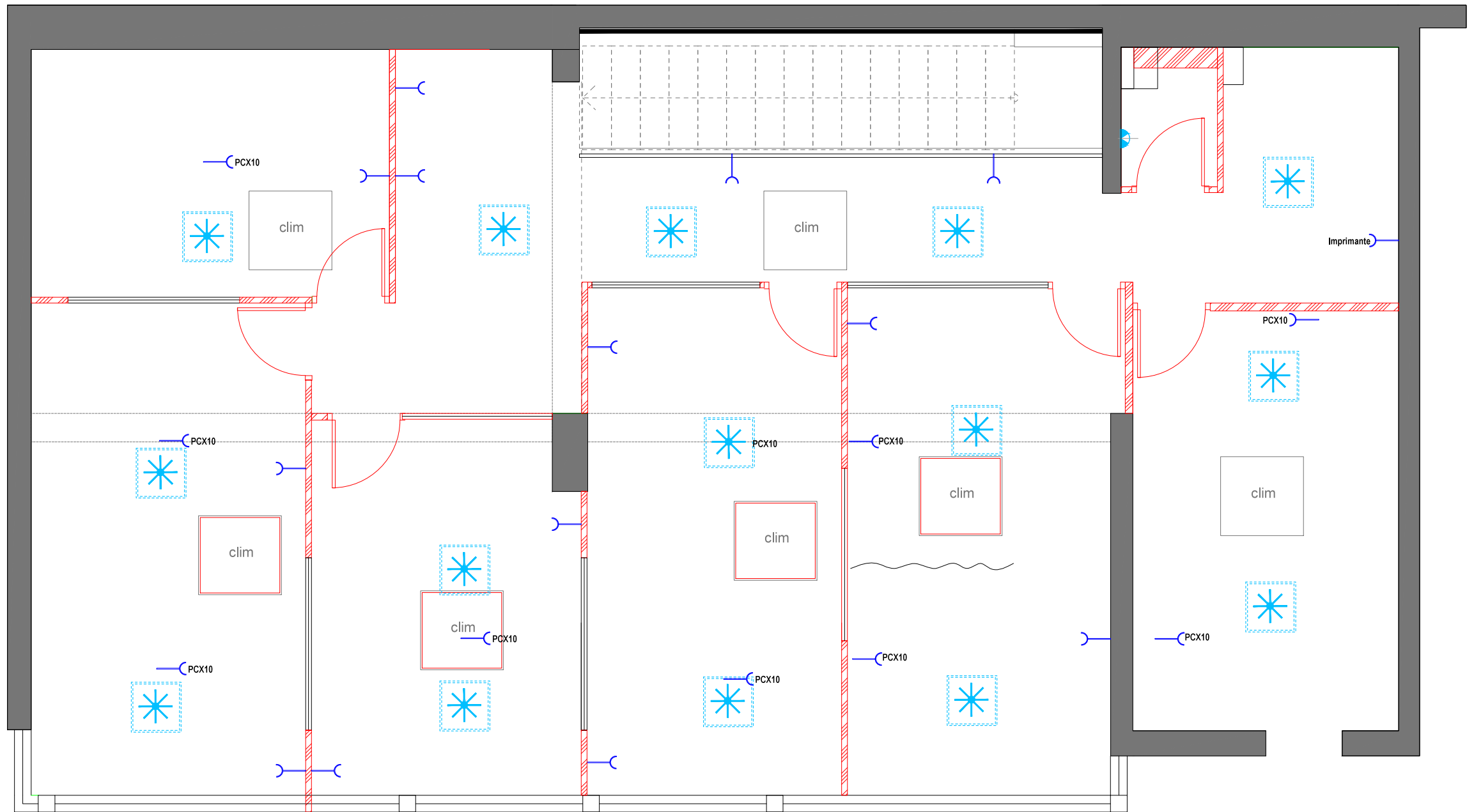
ARCHITECTE D'INTERIEUR

**CELIA SANTONI**

20 000 AJACCIO  
0632919020



135m<sup>2</sup>



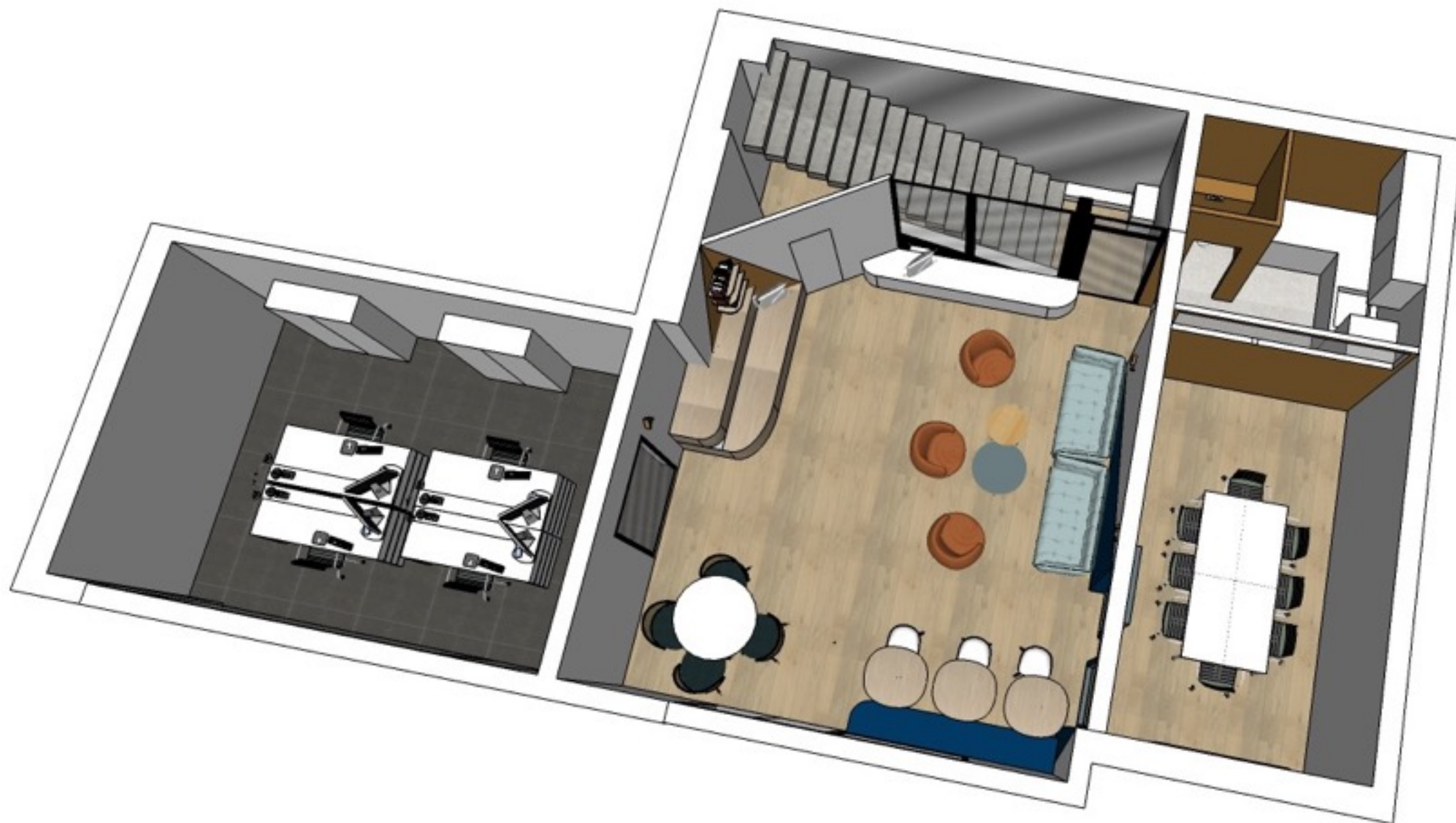
# R+1 ELEC

ARCHITECTE D'INTERIEUR

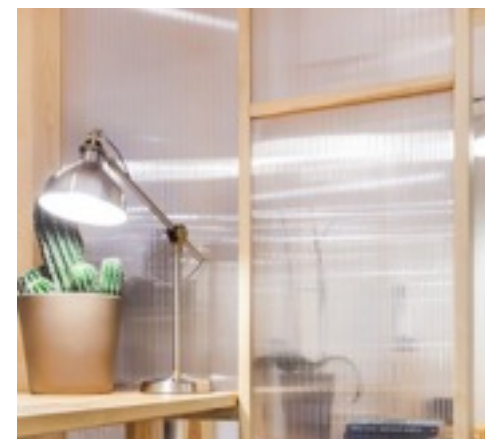
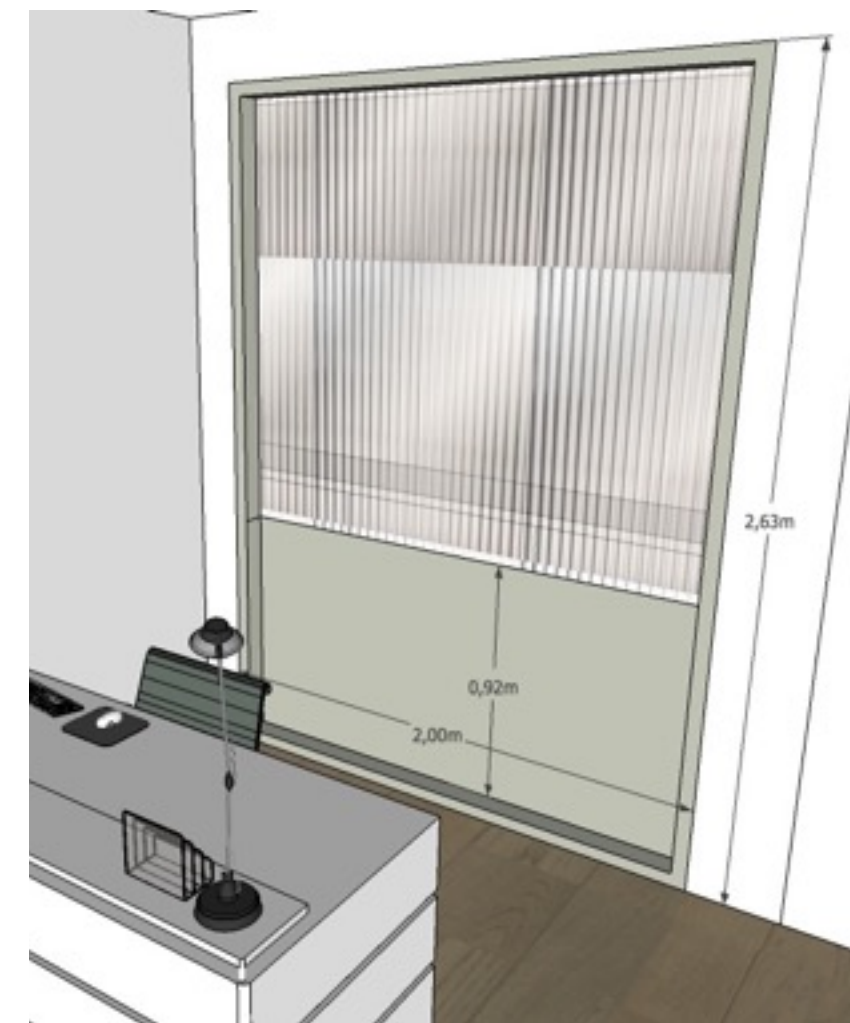
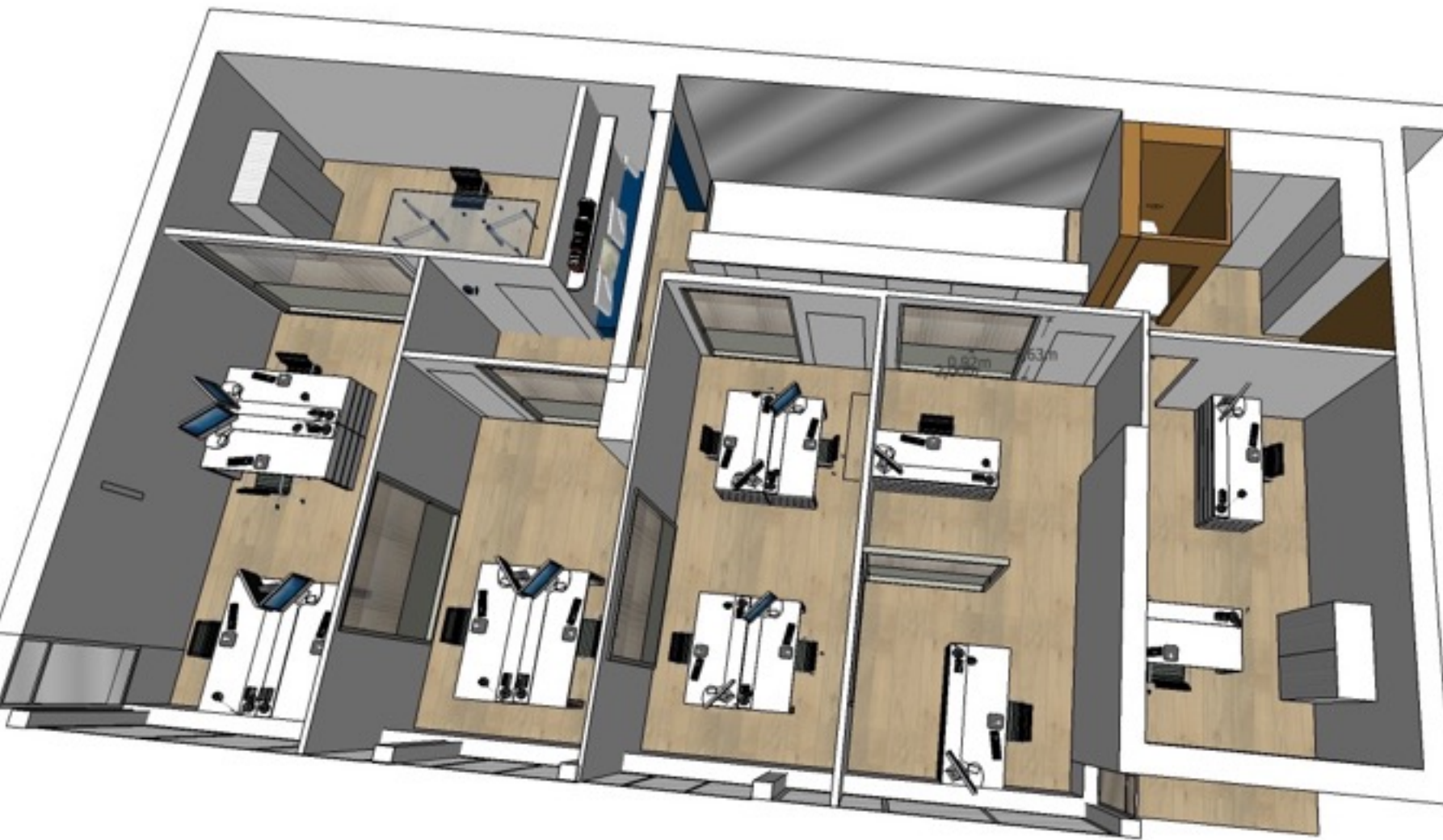
**CELIA SANTONI**

20 000 AJACCIO  
0632519020





- sol stratifié
- menuiserie en médium à peindre
- cuisine thermocollée
- wc suspendu
- cumulus extra plat
- éclairage - électricité supplémentaire
- clim supplémentaire x1



- sol stratifié
- menuiserie en médium à peindre
- wc suspendu
- éclairage - électricité supplémentaire
- clim supplémentaire coté baies vitrées x4
- Cloison + vitrage verrière