



iesha pack brochure

Enjoy the Iesha Sunshiny Day...

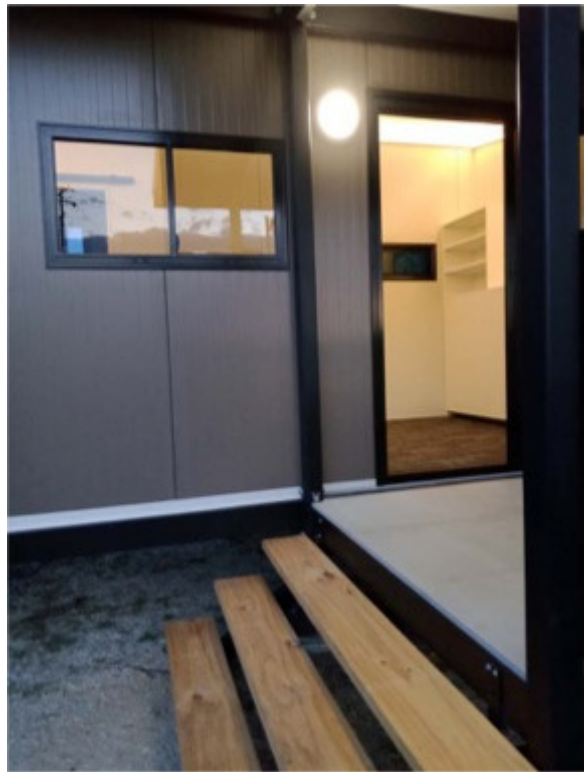
Table of Contents

<i>Introduction</i>	<i>4</i>
<i>Contact Us.....</i>	<i>4</i>
<i>Display Homes.....</i>	<i>4</i>
<i>About Our PODS.....</i>	<i>5</i>
<i>POD Range</i>	<i>6</i>
<i>POD Modules & Configurations</i>	<i>7</i>
<i>POD Functionality.....</i>	<i>9</i>
<i>Order and Delivery</i>	<i>9</i>
<i>Manufacturing Information.....</i>	<i>11</i>
<i>Export Info</i>	<i>12</i>
<i>Pricing.....</i>	<i>13</i>
<i>YourZone Franchise Self Employment</i>	<i>14</i>



At Iesha Homes, we firmly believe that great design doesn't have to be expensive.

- Jon Benelle, Iesha Homes Director



Introduction

leshahomes is a family business based in Bellingen NSW, providing **granny flat studios and office pods** to both Australia and New Zealand. With a 4-6 week* turnaround from order to delivery, our team assembles your POD in 1-3 days so you can move in the next. (*Delays of up to 2 weeks due to COVID-19)



Contact Us

leshahomes has a head office in Australia and New Zealand. You can find our hours of operation and contact information below:

BELLINGEN HEAD OFFICE

Hours: 9am-4pm Mon-Fri

Phone: 0412 757 385

General Inquiries: 0413 973 296

Mailing Address: 623 Promise Land Rd, Gleniffer, NSW 2454, Australia

CHRISTCHURCH HEAD OFFICE

Hours: 9am-4pm Mon-Fri

Phone: 0275 933 748

Mailing Address: P.O Box 20553, Bishopdale, Christchurch 8453, New Zealand

Display Homes

DISPLAY POD 2

Front Yard, 2 Bayldon Dr
RALEIGH, NSW 2454

DISPLAY HOME 1

14 Young St
BOWRAVILLE, NSW 2449

About Our PODS

5-STAR PERFORMANCE

1. Thermal Rated
2. Seismic & Earthquake Resistant
3. Cyclone/Hurricane Resistant
4. Flood-proof
5. Fire-proof



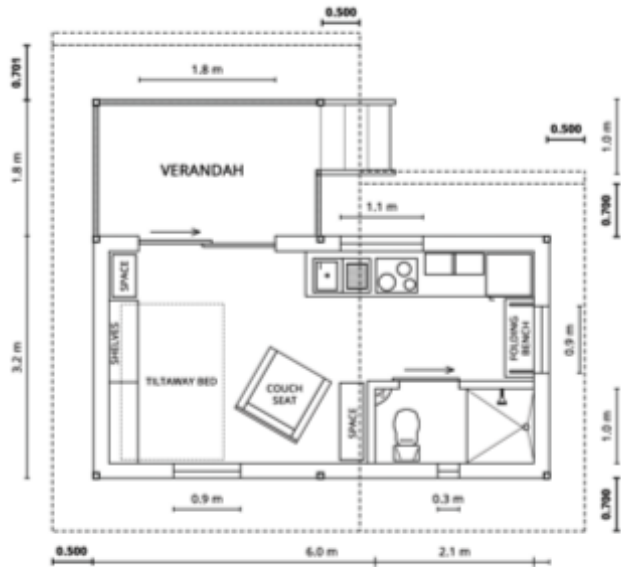
TOUGH MODERN SMART

- Modular connect multiple floor plans together and expand your home with ease.
- Small Homes that make for great extra space as well as rental opportunities.
- Modern Materials sleek, minimalist design using engineered steel and modern materials.
- Pre-built PODS delivered to your site and assembled by our team in 1-3 day.
- Flatpack PODS built on site in 21 days.



POD Range

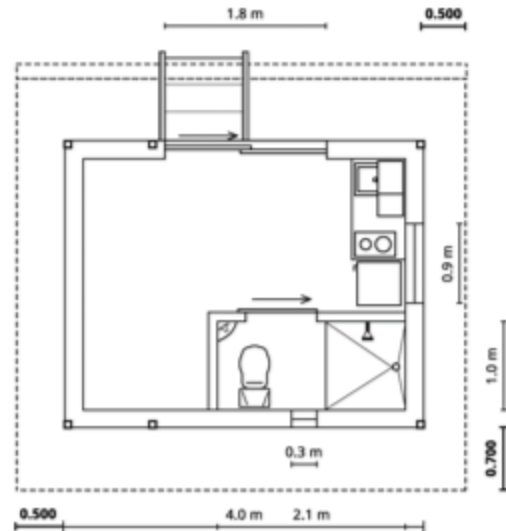
Ieshahomes currently has two POD types available: The Studielle POD for \$65k*, and the Office Studio for \$35k. *Conditions apply. Scroll to price list for details.



Studielle POD

19.2 sq m | Kitchen | Bath | Open-Living

- Kitchen with breakfast bar/laundry fold-out bench
- Optional tilt-away cabinet bed
- Optional carport underneath
- Optional temporary footings
- Optional bi-fold doors turns verandah into sun room
- Pre-built and delivered in 4-6 weeks*, assembly in 1-3 days.
- DIY Flatpack option – build it yourself in under 28 days.



Office POD

12.8 sq m | Kitchenette | Bath

- Pre-built and delivered 3-4 weeks* after ordering
- 1-3 days assembly by our team
- Kitset option – build it yourself in under 7 days
- 0.6 m – 2.4 m off the ground, room for a carport.
- Expandable, modular design (PODS connect to each other)
- Optional temporary footings

*Delays of up to 2 weeks due to COVID-19



[CLICK TO VIEW FLOOR PLAN LAYOUTS](#)

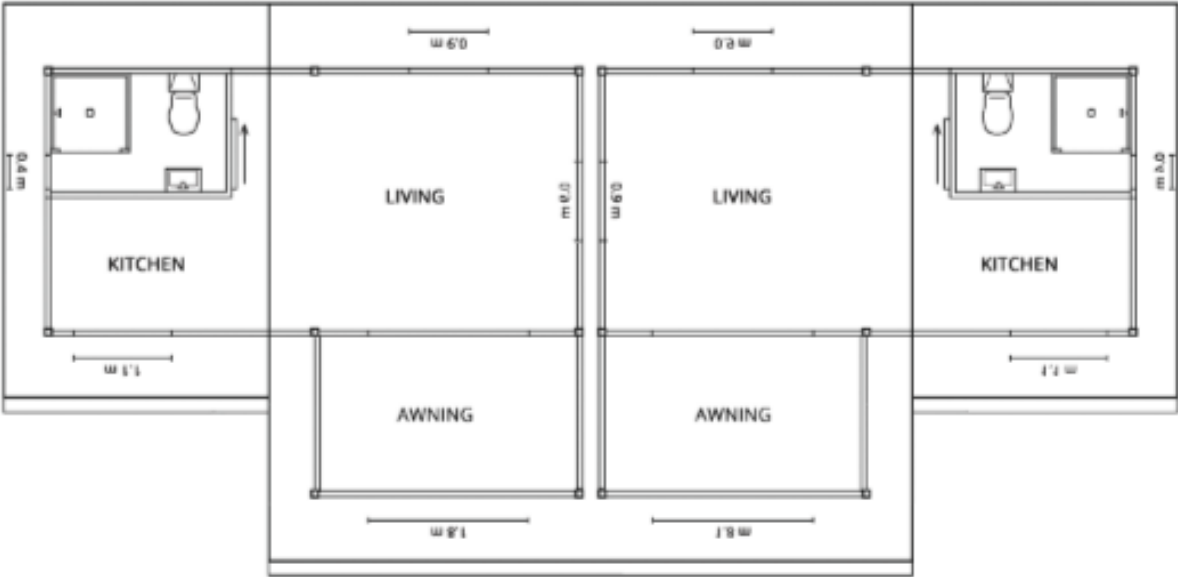
POD Modules & Configurations

To attach to your Studielle or Office PODS, Ieshahomes offers additional POD units as well as decking and awning modules. You can also extend your existing home with our 'existing house extension' modules, a Studielle or Office POD module that will attach to your house.

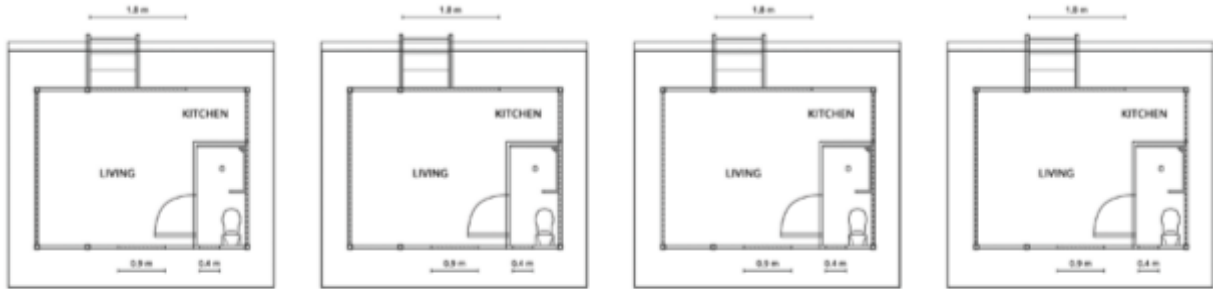
- Decking/Veranda
- Awning
- Existing house extension
- Additional Studielle POD
- Additional Office POD

MODULE CONFIGURATIONS

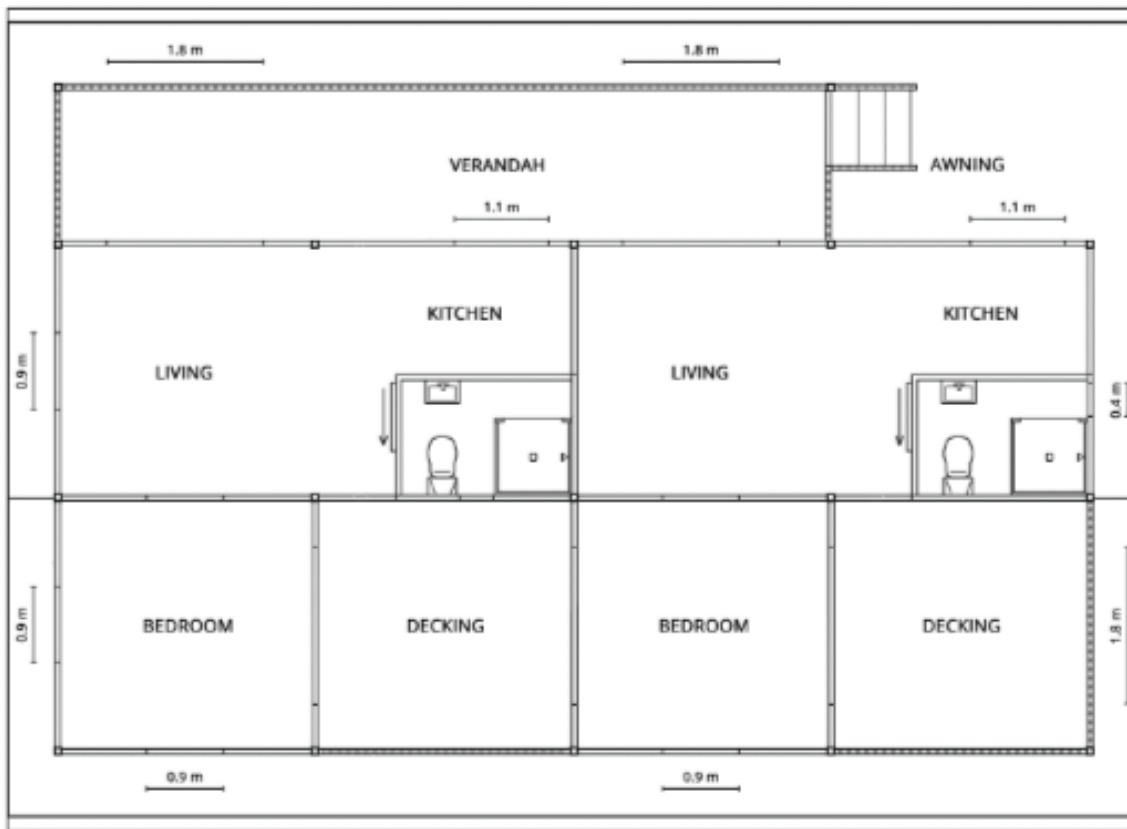
We offer two standard floor plans, but you can easily work with our team to create your own custom configuration. Below are some examples of floor plans you can create with our PODS:



DOUBLE STUDIELLE WITH AWNINGS



OFFICE STUDIO PODS



QUAD STUDIELLE WITH SHARED DECK AND AWNING



[CLICK TO VIEW MORE CONFIGURATIONS](#)

POD Functionality

Make our PODS what you need them to be, a house, a workspace, a rental unit, a commercial facility- the options are endless. Here are a few examples to get you inspired:

RESIDENTIAL

- Studio/Granny Flat
- Family isolation unit
- Guest house
- Air B&B
- Holiday home
- Garden retreat
- Affordable housing
- Rental unit
- Private dwelling for children (teenage/young adult)
- Extend your current home
- Temporary living during home construction/renovation
- Great start for first home buyers- add on more PODS as the family grows

BUSINESS

- Portable ICU
- Civil Road Works
- Accommodation for resorts/caravan parks
- Commercial dwellings
- Portable office
- Conference room
- Build multiples on a land section (duplex) building strata managed
- Business office
- Pop-up shops
- Boutique shops
- Backpackers/Hostels
- Student accommodation (campus units)

Order and Delivery

Ieshahomes has two order options for our range of PODS: **Pre-built** and **DIY Flatpack**. Please check your local council requirements before ordering an Ieshahomes POD. *Please note that delays of up to two weeks may occur due to COVID-19.*



[CLICK TO VIEW YOUR LOCAL COUNCIL REQUIREMENTS](#)

PRE-BUILT



- Delivery to NSW and QLD only
- No building required
- Turnaround time of 4-6 weeks from order to delivery
- Delivered as units in shipping container to be attached on site by our team
- Fixed onto your land or on optional temporary footings.
- Town service connection ready (Plumbing and electrical are installed but need connecting to town services like water, power, and telecommunications.
leshahomes does not cover this cost.)

FLATPACK

- Delivery Australia-wide
- Building required (DIY or Iesha Construction Team)
- Turnaround time 3-4 weeks from order to delivery
- Delivered as pre-cut, pre-measured materials that are ready for assembly. Fixtures and fittings delivered from local suppliers
- Build assist and additional parts service available
- Final inspection by an Iesha Homes representative



Manufacturing Information

Ieshahomes PODS are **made in Australia and New Zealand** and are certified for both Aus/NZ building standards (STANDARDS Australia and BUILDING PERFORMANCE New Zealand).

Australian Lic No: 242743C

New Zealand Lic No: BP133524

TURNAROUND

Due to COVID-19, delays of up to 2 weeks may incur

Ieshahomes estimates 4-6 weeks from order to delivery for all flatpack PODS and an estimated 3-4 weeks from order to delivery for DIY kitsets.

OUR SUPPLIERS



Ieshahomes sources quality tested and tried materials from local manufacturers.

Steel: BlueScope (Australia & NZ)

Wall/Roof Panels: Bondor (Australia & NZ) Metalcraft Roofing (NZ)

Windows/Doors: G.J. Gardner (Australia & NZ)

Fixtures: Bunnings Warehouse (Australia & NZ)

Kitchen/Tiltaway Bed: Fisher Fitouts (Australia & NZ)



**CLICK TO VIEW FULL DETAILED LIST
OF INCLUSIONS & EXCLUSIONS**

Export Info

Ieshahomes offers international export to the following countries:

- New Zealand
- USA
- Japan
- Vanuatu (Pacific Islands)

Currently, Ieshahomes is only exporting pre-built PODS. You can get both our Studielle POD, the Office POD, or any of our modules, exported to any of the above countries.

Please fill in and send the form below to admin@ieshahomes.com.au if you're interested in an exported POD or POD module.

EXPORT FORM

First Name: _____
Last Name: _____
Email Address: _____
Country: _____

Choose your POD: Office POD Studielle POD

Choose any modules: Awning Decking
 Additional Office POD Additional Studielle POD

Do you already have land for your POD? Yes No

Any comments? _____



Pricing

Flatpack Studielle from \$65k. Unfitted Flatpack Office POD from \$35k. All prices are subject to change. Prices shown below are in AUD. Add 10% of the total to each price for NZD.

PODS

Studielle POD – Standard

- Pre-built: \$79'995
- DIY Flatpack: \$69'995
- Unfitted (no kitchen or bed): \$59'995
- Add bi-folding doors: +\$4800

Office POD – Standard

- Pre-built: \$66'220
- DIY Flatpack: \$54'995
- Unfitted (no kitchen or bed): \$44'500
- Add bi-folding doors: +\$4800

Studielle POD – Carport Underneath

- Pre-built: \$96'495
- DIY Kitset: \$86'495
- Unfitted (no kitchen or bed): \$76'495
- Add bi-folding doors: +\$4800

Office POD – Carport Underneath

- Pre-built: \$79'720
- DIY Kitset: \$68'495
- Unfitted (no kitchen or bed): \$58'000
- Add bi-folding doors: +\$4800

MODULES

Contact us for modules price list.



[CLICK TO GET AN INSTANT ONLINE QUOTE](#)

YourZone Franchise Self Employment

Ieshahomes has an investment opportunity which could make you a POD Franchisee. To be qualified for this position, all you need to do is become a zone owner and purchase a POD for use as a display home facility for your local community. You'll earn a \$5000 commission on each sale your POD generates. No building required, Ieshahomes takes care of all sales and even works with you to provide helpful leads so you can get your community excited to buy their own PODS.

ZONE OWNER ROLE

1. Purchases display home
2. Markets the display home locally (Ieshahomes will provide Zone Owners with leads to help them market locally)
3. Zone Owner receives \$5000 for each sale generated from their display home



IESHAHOMES' ROLE

1. Manufactures the display home in Coffs Harbour NSW
2. Delivers display home to Zone Owner
3. Builds display home on Zone Owner's property or property leased by Zone Owner
4. Markets the display home to consumers via our websites, facebook pages, as well as radio and social media advertising.
5. Ieshahomes manages all sales and orders from their head office in Bellingen NSW. Orders are delivered to the customer by Ieshahomes. If customer requires build assist or flat pack assembly services, Ieshahomes provides this.



[CLICK TO APPLY FOR YOURZONE](#)

A photograph of a modern building with a covered walkway. A person is standing inside the walkway. The scene is outdoors with trees in the background. The text 'Enjoy The Ilesha Sunshiny Day...' is overlaid in yellow.

Enjoy
The Ilesha
Sunshiny
Day...