

VARIA ANATOLICA XII

**MECANISMES ET INNOVATIONS  
MONETAIRES DANS L'ANATOLIE  
ACHEMENIDE**

**NUMISMATIQUE ET HISTOIRE**

**Actes de la Table Ronde Internationale d'Istanbul, 22-23 mai 1997**

**édités par Olivier Casabonne**



**INSTITUT FRANÇAIS D'ETUDES ANATOLIENNES D'ISTANBUL**

**DE BOCCARD**

**2000**



Tevfik GÖKTÜRK

## SMALL COINS FROM CILICIA AND SURROUNDINGS<sup>1</sup>

(Pl. XVII-XXVI)

### 1. CILICIA

#### 1.1. NAGIDOS (ca. 420-380 B.C.)

- 1 AR *Obv.* Head of Aphrodite r., hair in sphenone ; border of dots ; **N.** *Rev.* Bearded head of Dionysos l. ; border of dots ; **N.**  
0,70 g - 11 mm - ↓ - inv. no. 140 (H. Sırrı Göktürk Collection) - **Pl. XVII, 1.**
- 2 AR *Obv.* Head of Aphrodite almost facing, hair in sphenone ; border of dots ; **N.** *Rev.* Head of youthful Dionysos almost facing, wearing ivy-leaf ; **N.**  
0,74 g - 9 mm - ↘ - inv. no. 88.26/11.93. *Cf.* SNG 1986 : no. 6 - **Pl. XVII, 2.**
- 3 AR *Obv.* Head of Aphrodite l. ; border of dots. *Rev.* Bearded head (Dionysos) l., hair rolled ; incuse circle ; **NAΓ.**  
0,88 g - 10 mm - ↑ - inv. no. 111.62/5.93. *Cf.* Hill, 1900 : 110/8 - **Pl. XVII, 3.**
- 4 AR *Obv.* Head of Pan r. ; border of dots. *Rev.* Bearded head of Dionysos ; border of dots ; **NAG[I].**  
0,72 g - 9 mm - ↑ - inv. no. 128 (H. Sırrı Göktürk Collection). *Cf.* SNG 1993 : no. 16 ; *CNG* (Lancaster) 29 : no. 246 - **Pl. XVII, 4.**
- 5 AR *Obv.* Baal seated l., holding lotus-tipped sceptre ; border of dots. *Rev.* Turreted head of Aphrodite l., wearing earring and necklace ; **NA.**  
0,76 g - 11 mm - → - inv. no. 141 (H. Sırrı Göktürk Collection). *Cf.* *CNG* (Lancaster) 31 : no. 371 - **Pl. XVII, 5.**

#### 1.2. KELENDERIS

##### a) Ca. 425-400 B.C.

*Obv.* Forepart of Pegasus l. with a curved wing. *Rev.* Forepart of goat kneeling l., head reverted ; traces of incuse circle ; **K[E].**

1) This catalogue has been published in Turkish (with an introduction) in : Göktürk, T., 1997 : "Akhemenid dönemi Kilikia buluntusu oboller", *Anadolu Medeniyetleri Müzesi 1996 yılı* : 67-100. The inv. nos. refer to the Museum of Anatolian Civilizations or to the collection of H. Sırrı Göktürk.

- 6 AR 0,86 g - 8,5 mm - ↑ - inv. no. 111.62/8.93. Cf. Hill, 1900 : 56/32 - **Pl. XVII, 6.**  
*Obv.* Forepart of Pegasus r. with a curved wing ; border of dots. *Rev.* Goat kneeling r., head reverted ; traces of incuse circle ; KEA.
- 7 AR 0,72 g - 10 mm - ↓ - inv. no. 111.62/9.93. Cf. SNG 1993 : no. 89 - **Pl. XVII, 7.**
- b) Later style**
- 8 AR 0,66 g - 10 mm - → - inv. no. 111.62/10.93. Cf. Hill, 1900 : 57/37 - **Pl. XVII, 8.**  
*Obv.* Horse prancing r. ; border of dots. *Rev.* Goat kneeling l., head reverted ; traces of incuse circle ; KE.
- 9 AR 0,80 g - 11 mm - ↑ - inv. no. 127 (H. Sırrı Göktürk Collection). Cf. SNG 1993 : no. 116 - **Pl. XVII, 9.**  
*Obv.* Horse prancing r. on exergual line ; border of dots. *Rev.* Goat kneeling r. on exergual line, head reverted ; KE.

### 1.3. HOLMOI (4<sup>th</sup> cent. B.C.)

- 10 AR 0,59 g - 9,5 mm - ↑ - inv. no. 131 (H. Sırrı Göktürk Collection). *Rev.* OAM ITI. Cf. SNG 1993 : no. 121 - **Pl. XVII, 10.**  
*Obv.* Head of Athena r. in crested Athenian helmet ; border of dots. *Rev.* Head of Apollo Sarpedonios r., hair bound with taenia with laurel, leaves in front ; border of dots.
- 11 AR 0,61 g - 10 mm - ↓ - inv. no. 132 (H. Sırrı Göktürk Collection). *Rev.* OAMITIK ON. Cf. SNG 1986 : no. 34 - **Pl. XVIII, 1.**

### 1.4. SOLOI

#### a) Ca. 465-350 B.C.

- 12 AR 0,84 g - 8 mm - → - inv. no. 136 (H. Sırrı Göktürk Collection). Cf. SNG 1993 : no. 140 - **Pl. XVIII, 2.**  
*Obv.* Head of Amazon l., wearing pointed cap, decorated with curved wing, and circular earring. *Rev.* Bunch of grapes ; dotted incuse square ; ΣO.

#### b) Ca. 350-300 B.C.

- 13 AR 0,87 g - 9,5 mm - → - inv. no. 142 (H. Sırrı Göktürk Collection). *Rev.* Incuse circle - **Pl. XVIII, 3.**  
*Obv.* Head of Athena r. in Athenian helmet. *Rev.* Bunch of grapes with tendril.
- 14 AR 0,77 g - 10 mm - → - inv. no. 143 (H. Sırrı Göktürk Collection). *Obv.* Border of dots. *Rev.* ΣO. Cf. SNG 1993 : no. 187 - **Pl. XVIII, 4.**
- 15 AR 0,64 g - 10 mm - ↓ - inv. no. 130 (H. Sırrı Göktürk Collection) - **Pl. XVIII, 5.**  
*Obv.* Head of Athena r. in crested Corinthian helmet ; border of dots. *Rev.* Bunch of grapes with tendril and leaf ; ΣO ΛE.

## 1.5. TARSOS

## a) Tiribazos (386-380 B.C.)

- Obv.* Head of Ahuramazda r. *Rev.* Baaltars standing l., holding eagle and sceptre ; border of dots ; Aramaic **TRI** (for Tiribazos).  
**16 AR** 0,58 g - 9 mm - ↖ - inv. no. 144 (H. Sırrı Göktürk Collection). *Cf.* SNG 1993 : no. 234 ; *CNG* (Lancaster) 27 : no. 678 - **Pl. XVIII, 6.**

- Obv.* Head of youthful male l., whole in incuse circle. *Rev.* Kneeling female throwing astragaloi.  
**17 AR** 0,43 g - 9 mm - ↑ - inv. no. 145 (H. Sırrı Göktürk Collection). *Cf.* SNG 1993 : no. 239 - **Pl. XVIII, 7.**

- 18 AR** 0,45 g - 9 mm - ↑ - inv. no. 146 (H. Sırrı Göktürk Collection) - **Pl. XVIII, 8.**

- Obv.* Baaltars seated, holding eagle and resting on sceptre. *Rev.* Baaltars (?) nude, holding short sceptre and eagle ; Aramaic **TRZ** (for Tarsus).  
**19 AR** 0,57 g - 11 mm - ↑ - inv. no. 22.64/2.96. *Cf.* SNG 1986 : no. 67 ; *CNG* (Lancaster) 31 : no. 376 - **Pl. XVIII, 9.**

- 20 AR** 0,95 g - 9 mm - ↓ - inv. no. 22.64/3.96 - **Pl. XVIII, 10.**

## b) Time of Pharnabazos (380/79-374/75 B.C.)

- Obv.* Head of Arethuse nearly facing ; fish in the field ; linear border. *Rev.* Bearded male head (Ares ?) l. wearing crested Athenian helmet decorated with floral scroll.  
**21 AR** 0,75 g - 10 mm - ↑ - inv. no. 147 (H. Sırrı Göktürk Collection). *Cf.* Hill, 1900 : 166/23-25 ; SNG 1993 : no. 306 - **Pl. XIX, 1.**

- 22 AR** 0,75 g - 10 mm - ↑ - inv. no. 117.33/22.96 - **Pl. XIX, 2.**

- Obv.* Head of Arethuse nearly facing. *Rev.* Baaltars seated, holding eagle and resting on sceptre.  
**23 AR** 0,36 g - 7 mm - ← - inv. no. 1556.12/6 - **Pl. XIX, 3.**

- Obv.* Baaltars seated l., on diphros, himation over l. arm, holding before him lotus-headed sceptre ; border of dots. *Rev.* Bearded male head (Ares ?) l. wearing crested Athenian helmet decorated with floral scroll, chlamys fastened round neck ; border of dots.  
**24 AR** 0,79 g - 11 mm - → - inv. no. 172 (H. Sırrı Göktürk Collection). *Cf.* SNG 1986 : no. 76-77 - **Pl. XIX, 4.**

## c) Tarkumuwa (378-372 B.C. ?)

- Obv.* Head of female (Aphrodite ?) wearing earrings, necklace and diadem ; border of dots. *Rev.* Bearded male head (Ares ?) r. wearing crested Athenian helmet ; border of dots ; Aramaic **TRKMW** (for Tarkumuwa).  
**25 AR** 0,69 g - 10 mm - ↓ - inv. no. 129 (H. Sırrı Göktürk Collection). *Cf.* SNG 1986 : no. 81 ; SNG 1993 : no. 278 ; *CNG* (Lancaster) 27 : no. 684 - **Pl. XIX, 5.**

**d) Time of Pharnabazos and Tarkumuwa**

- Obv.* Cock between two stars. *Rev.* Bearded male head (Ares ?) r. wearing crested Athenian helmet, whole in linear border.  
**26 AR** 0,58 g - 9 mm - ↓ - inv. no. 148 (H. Sırrı Göktürk Collection). *Cf.* SNG 1986 : no. 99 ; Hirsch 191/661 - **Pl. XIX, 6.**

**e) Balakros (333-323 B.C.)**

- Obv.* Head of Athena r. wearing Athenian helmet. *Rev.* Shield.  
**27 AR** 0,53 g - 10 mm - → - inv. no. 77.18/10.96. *Rev.* [B]A (for [B]alakros). *Cf.* SNG 1986 : no. 123 ; SNG 1993 : no. 489a-b - **Pl. XIX, 7.**
- 28 AR** 0,64 g - 10 mm - ↑ - inv. no. 117.33/23.96. *Rev.* B (for Balakros) - **Pl. XIX, 8.**

**1.6. MALLOS****a) Ca. 425-385 B.C.**

- Obv.* Upper part of beardless male with two pairs of curved wings, holding solar disk with both hands ; border of dots. *Rev.* Swan l. ; incuse square.  
**29 AR** 0,83 g - 9 mm - - inv. no. 88.26/8.93 - **Pl. XIX, 9.**
- Obv.* Janiform head of bearded male. *Rev.* Swan l.  
**30 AR** 0,70 g - 8 mm - → - inv. no. 1556.12/5. *Cf.* SNG 1986 : no. 134 - **Pl. XIX, 10.**
- Obv.* Swan l. *Rev.* Blank.  
**31 AR** 0,17 g - 5,5 mm - inv. no. 1556.12/1. Unpublished ? - **Pl. XX, 1.**

**b) Ca. 385-333 B.C.**

- Obv.* Veiled head of Demeter r. wearing stephane, earring and necklace ; border of dots. *Rev.* Demeter moving to l., a torch in l. hand and an ear of corn in r.  
**32 AR** 0,60 g - 10 mm - ← - inv. no. 149 (H. Sırrı Göktürk Collection). *Cf.* Hill, 1900 : 99/222 ; SNG 1986 : no. 159 - **Pl. XX, 2.**
- Obv.* Head of Herakles l. wearing lion's skin. *Rev.* Swan seated on a ear of corn l., head reverted ; MA.  
**33 AR** 0,78 g - 9,5 mm - ↓ - inv. no. 139 (H. Sırrı Göktürk Collection). *Cf.* SNG 1993 : no. 384 - **Pl. XX, 3.**
- Obv.* The king of Persia as archer, wearing kidaris and achaemenid court robe and running to r. ; he holds a bow and a lance terminated by an apple. *Rev.* Same type.  
**34 AR** 0,63 g - 10 mm - ↑ - inv. no. 150 (H. Sırrı Göktürk Collection). *Cf.* SNG 1993 : no. 401 - **Pl. XX, 4.**

**1.7. MYRIANDROS ? (Mazaios, ca. 361-334 B.C.)**

*Obv.* King of Persia, wearing crown, seated r. and holding lotus-tipped sceptre and a

lotus flower. *Rev.* Youthful male head l. with curled hair and pointed cap.  
**35 AR** 0,74 g - 11 mm - ↗ - inv. no. 151 (H. Sırrı Collection). *Cf.* SNG 1993 : no. 429 - **Pl. XX, 5.**

*Obv.* Baaltars seated l., holding sceptre. *Rev.* Lion l. ; Aramaic **MZDY** (for Mazday = Mazaios) ?  
**36 AR** 0,72 g - 10 mm - → - inv. no. 152 (H. Sırrı Göktürk Collection). Unpublished ? - **Pl. XX, 6**

### 1.8. INCERTI (ca. 4<sup>th</sup> cent. B.C.)

*Obv.* Three-faced bearded male head. *Rev.* Janiform head, bearded male and female.  
**37 AR** 0,78 g - 9 mm - ↖ - inv. no. 153 (H. Sırrı Göktürk Collection). *Cf.* SNG 1986 : no. 201 ; *CNG* (Lancaster) 21 : no. 385 - **Pl. XX, 7.**

*Obv.* Head of young female or beardless male nearly facing. *Rev.* Persian king fighting with winged griffin-lion standing on hind-legs.  
**38 AR** 0,80 g - 11 mm - ↑ - inv. no. 134 (H. Sırrı Göktürk Collection). *Cf.* *Münzen und Medaillen*, Auktion 41 : no. 275 - **Pl. XX, 8.**

*Obv.* Persian king fighting with winged lion standing on hind-legs. *Rev.* Forepart of a lion.  
**39 AR** 0,65 g - 10,5 mm - → - inv. no. 154 (H. Sırrı Göktürk Collection). *Cf.* Lanz 1990, Auktion 54 : no. 264 (Cyprus-Amathus ? 350 B.C.) - **Pl. XX, 9.**

*Obv.* Female bust facing, wearing veil and necklace ; border of dots. *Rev.* Bearded bust of Herakles l., the lion's skin fastened round neck ; border of dots.  
**40 AR** 0,78 g - 10 mm - → - inv. no. 135 (H. Sırrı Göktürk Collection). *Cf.* Hill, 1900 : 239/1 ; SNG 1986 : no. 220 ; SNG 1993 : no. 480 - **Pl. XX, 10.**

*Obv.* Baaltars seated l., resting on sceptre and holding bunch of grapes and ear of corn ; border of dots. *Rev.* Eagle on plough, the whole in dotted square.  
**41 AR** 0,83 g - 13 mm - ↑ - inv. no. 117.33/21.96. *Cf.* SNG 1986 : no. 228 - **Pl. XXI, 1.**

*Obv.* Head of Herakles facing, wearing lion's skin ; border of dots. *Rev.* Eagle on stag's head, the whole in dotted square.  
**42 AR** 0,68 g - 11 mm - ↑ - inv. no. 155 (H. Sırrı Göktürk Collection). *Cf.* SNG 1986 : no. 229 ; SNG 1993 : no. 472 - **Pl. XXI, 2.**

*Obv.* Youthful male head l. ; border of dots. *Rev.* Eagle on back of a lion, the whole in dotted square.  
**43 AR** 0,68 g - 11 mm - ↗ - inv. no. 125 (H. Sırrı Göktürk Collection). *Cf.* SNG 1986 : no. 230 ; SNG 1993 : no. 474 - **Pl. XXI, 3.**

*Obv.* Facing female head nearly facing. *Rev.* Facing head of Egyptian god Bes.  
**44 AR** 0,69 g - 9,5 mm - → - inv. no. 137 (H. Sırrı Göktürk Collection). *Cf.* SNG 1986 : no. 233 ; SNG 1993 : no. 486 ; *CNG* (Lancaster) 29 : no. 253 - **Pl. XXI, 4.**

**45 AR** 0,16 g - 6 mm - ↓ - inv. no. 171 (H. Sırrı Göktürk Collection). *Cf.* SNG 1986 : no. 235 - **Pl. XXI, 5.**

*Obv.* Bearded head of Pan l., with bull's horns. *Rev.* Athena, seated l., with spear and shield.

**46 AR** 0,67 g - 10 mm - ↑ - inv. no. 156 (H. Sırrı Göktürk Collection). *Cf.* SNG 1986 : no. 236 - **Pl. XXI, 6.**

**47 AR** 0,86 g - 10 mm - ↖ - inv. no. 157 (H. Sırrı Göktürk Collection) - **Pl. XXI, 7.**

*Obv.* Gorgon's head facing with curly hair. *Rev.* Sphinx, seated l., wearing kalathos.

**48 AR** 0,74 g - 10 mm - ↑ - inv. no. 158 (H. Sırrı Göktürk Collection). *Cf.* Hill, 1900 : 113/16 (attributed to Nagidos) ; SNG 1986 : no. 250 ; SNG 1993 : no. 479 - **Pl. XXI, 8.**

*Obv.* Head of Hermes l. wearing petasos. *Rev.* Aphrodite seated l. on throne decorated with sphinxes ; in r. hand, she raises a flower to her mouth.

**49 AR** 0,66 g - 11 mm - ← - inv. no. 159 (H. Sırrı Göktürk Collection). *Cf.* Sear, 1979 : no. 5525 ; SNG 1986 : no. 255 - **Pl. XXI, 9.**

*Obv.* Head of female l. wearing three-pointed crown. *Rev.* Bearded warrior head l. wearing crested Athenian helmet ; border of dots ; **T E.**

**50 AR** 0,77 g - 10 mm - ← - inv. no. 160 (H. Sırrı Göktürk Collection). *Cf.* SNG 1986 : no. 214 - **Pl. XXI, 10.**

*Obv.* Head of female, facing, wearing high sphenone decorated with palmate. *Rev.* Head of Aphrodite l. wearing earrings and necklace.

**51 AR** 0,68 g - 11 mm - ↑ - inv. no. 126 (H. Sırrı Göktürk Collection). *Cf.* SNG 1986 : no. 243 - **Pl. XXII, 1.**

*Obv.* Head of satrap l. ; above, star ; all within linear circle. *Rev.* Turreted head of female l.

**52 AR** 0,71 g - 11 mm - ← - inv. no. 161 (H. Sırrı Göktürk Collection). Attributed to Evagoras II, Cyprus ? - **Pl. XXII, 2.**

*Obv.* Laureate head of Apollo l. within linear circle. *Rev.* Baaltars seated r. holding sceptre, bunch of grapes and ear of corn.

**53 AR** 0,55 g - 11 mm - √ - inv. no. 77.18/9.96. *Cf.* Lanz 1990, Auktion 54 : no. 245 (Mallos, 333-323 B.C.) - **Pl. XXII, 3.**

*Obv.* Bearded male head l. (Kronos ?) ; border of dots. *Rev.* Bearded head of a warrior l. wearing crested Athenian helmet ; border of dots.

**54 AR** 0,32 g - 9 mm - √ - inv. no. 170 (H. Sırrı Göktürk Collection). Unpublished ? - **Pl. XXII, 4.**

*Obv.* Bearded head of a warrior r. wearing crested Athenian helmet. *R.* Owl standing l. between two olives branches.

**55 AR** 0,63 g - 9 mm - → - inv. no. 168 (H. Sırrı Göktürk Collection). Unpublished ? - **Pl. XXII, 5.**

*Obv.* Two lion foreparts joined back to back, both with jaws and protruding tongue, lotus design above. *Rev.* Bearded head l. ; traces of incuse circle.



- 56 AR 0,36 g - 8 mm - ↖ - inv. no. 111.62/15.93. Cf. Dr. Busso Coll. : 328/246 (Mazday, ca. 360 B.C. ?) - **Pl. XXII, 6.**
- Obv.* Baaltars seated l. holding ear of corn and bunch of grapes and resting on a sceptre. *Rev.* Forepart of wolf r. ; above, a crescent ; dotted square.
- 57 AR 0,66 g - 11 mm - ↓ - inv. no. 22.8/1.79. Cf. Hill, 1900 : 176/86 ; SNG 1986 : no. 223 ; SNG 1993 : no. 451 ; CNG (Lancaster) 27 : no. 688 - **Pl. XXII, 7.**
- 58 AR 0,61 g - 10 mm - ↑ - inv. no. 117.33/26.96 - **Pl. XXII, 8.**
- Obv.* Same type ; double border of dots. *Rev.* Same type ; the wolf is r.
- 59 AR 0,56 g - 13 mm - ↑ - inv. no. 117.33/18.96 - **Pl. XXII, 9.**
- Obv.* Bearded head r. *Rev.* Forepart of a wolf r. ; above, crescent.
- 60 AR 0,47 g - 9 mm - ↑ - inv. no. 117.33/19.96. Tarsus ? - **Pl. XXII, 10.**
- Obv.* Head of young Herakles r., clad in lion's skin. *Rev.* Baaltars seated l. on throne without back ; ΣΙ (Issos ?).
- 61 AR 0,46 g - 10 mm - ← - inv. no. 1556.12/11 - **Pl. XXIII, 1.**
- Obv.* Baaltars seated l., holding ear of corn and bunch of grapes, and resting on a sceptre ; border of dots. *Rev.* Uncertain figure (forepart of wolf ?).
- 62 AR 0,59 g - 10 mm - ? - inv. no. 117.33/24.96. Unpublished ? - **Pl. XXIII, 2.**
- Obv.* Forepart of a lion r. (?). *Rev.* Head of young male nearly facing , the whole in slightly incuse circle.
- 63 AR 0,85 g - 9 mm - ↑ - inv. no. 173 (H. Sırrı Göktürk Collection). Unpublished ? - **Pl. XXIII, 3.**

## 2. LARANDA

### Time of Mazday or 324-323 B.C.

- Obv.* Two jugate diademed male heads r. ; border of dots. *Rev.* Forepart of wolf r. ; monogram  $\overline{\Lambda P}$  and star ;  $\Lambda$ APAN.
- 64 AR 0,55 g - 11 mm - ↘ - inv. no. 133 (H. Sırrı Göktürk Collection). Cf. CNG (Lancaster) 27 : no. 661 - **Pl. XXIII, 4.**
- Obv.* Head of bearded man (Herakles ?) facing. *Rev.* Forepart of wolf r. ; star.
- 65 AR 0,60 g - 12 mm - → - inv. no. 162 (H. Sırrı Göktürk Collection). *Rev.* Monogram  $\overline{\Lambda P}$  ;  $\Lambda$ APAN - **Pl. XXIII, 5.**
- 66 AR 0,57 g - 11 mm - → - inv. no. 117.33/1.96. Cf. CNG (Lancaster) 33 : no. 343 - **Pl. XXIII, 6.**
- 67 AR 0,56 g - 10 mm - ↑ - inv. no. 117.33/2.96 - **Pl. XXIV, 1.**
- Obv.* Head of Herakles facing, lion's skin fastened round neck ; club and **H** (?). *Rev.* Forepart of wolf ; star.
- 68 AR 0,46 g - 10 mm - ↑ - inv. no. 163 (H. Sırrı Göktürk Collection) - **Pl. XXIV, 2.**
- 69 AR 0,65 g - 10,5 mm - ↑ - inv. no. 117.33/3.96 - **Pl. XXIV, 3.**

- Obv.* Head of bearded male r. *Rev.* Forepart of wolf ;  $\Lambda$ .
- 70 AR 0,58 g - 10 mm -  $\downarrow$  - inv. no. 164 (H. Sırrı Göktürk Collection). *Cf.* SNG 1986 : no. 227 - **Pl. XXIV, 4.**
- 71 AR 0,42 g - 11 mm -  $\nearrow$  - inv. no. 117.33/4.96 - **Pl. XXIV, 5.**
- 72 AR 0,59 g - 10 mm -  $\leftarrow$  - inv. no. 117.33/5.96. *Rev.* Border of dots - **Pl. XXIV, 6.**
- 73 AR 0,68 g - 11 mm -  $\uparrow$  - inv. no. 117.33/6.96. *Rev.* Border of dots - **Pl. XXIV, 7.**
- 74 AR 0,44 g - 10 mm -  $\leftarrow$  - inv. no. 117.33/7.96. *Rev.* Border of dots - **Pl. XXIV, 8.**
- 75 AR 0,39 g - 9 mm -  $\downarrow$  - inv. no. 117.33/8.96. *Rev.* Border of dots - **Pl. XXIV, 9.**
- 76 AR 0,46 g - 9 mm -  $\rightarrow$  - inv. no. 117.33/9.96 - **Pl. XXIV, 10.**
- 77 AR 0,48 g - 10 mm -  $\leftarrow$  - inv. no. 117.33/10.96 - **Pl. XXV, 1.**
- 78 AR 0,43 g - 9 mm -  $\rightarrow$  - inv. no. 117.33/11.96. *Obv.* and *Rev.* Border of dots - **Pl. XXV, 2.**
- 79 AR 0,68 g - 11 mm -  $\leftarrow$  - inv. no. 175 (H. Sırrı Göktürk Collection). *Obv.* and *Rev.* Border of dots - **Pl. XXV, 3.**
- 80 AR 0,58 g - 10 mm -  $\uparrow$  - inv. no. 117.33/12.96. *Obv.* and *Rev.* Border of dots - **Pl. XXV, 4.**
- 81 AR 0,57 g - 9 mm -  $\uparrow$  - inv. no. 117.33/13.96. *Rev.* Without  $\Lambda$  - **Pl. XXV, 5.**
- Obv.* Baaltars seated l., holding ear of corn and bunch of grapes, and resting on a sceptre ; double border of dots. *Rev.* Forepart of wolf r. ; border of dots ;  $\Lambda$ .
- 82 AR 0,66 g - 12 mm -  $\nearrow$  - inv. no. 117.33/14.96. *Cf.* SNG 1986 : no. 226 - **Pl. XXV, 6.**
- 83 AR 0,52 g - 11 mm -  $\uparrow$  - inv. no. 117.33/15.96 - **Pl. XXV, 7.**
- 84 AR 0,59 g - 12 mm -  $\uparrow$  - inv. no. 117.33/17.96 - **Pl. XXV, 8.**
- 85 AR 0,36 g - 11 mm -  $\rightarrow$  - inv. no. 117.33/16.96 - **Pl. XXV, 9.**

### 3. ISAURA PALAIA

#### 333-322 B.C.

- Obv.* Head of Herakles nearly facing . *Rev.* Head of a lion facing ; beneath,  $\Upsilon\Lambda\Upsilon\Gamma\Omega$ .
- 86 AR 0,34 g - 7 mm -  $\rightarrow$  - inv. no. 165 (H. Sırrı Göktürk Collection). *Cf.* Hirsch, Auktion 181 : no. 329 - **Pl. XXVI, 1.**
- Obv.* Aegis with head of Herakles nearly facing. *Rev.* Head of a lion facing ; beneath,  $\text{N}\Sigma\text{A}\Upsilon\text{C}$  ?
- 87 AR 0,30 g - 9 mm -  $\downarrow$  - inv. no. 166 (H. Sırrı Göktürk Collection) - **Pl. XXVI, 2.**

### 4. CYPRUS

#### 4.1. SALAMIS (Evagoras II, 361-351 B.C.)

- Obv.* Bust of a man wearing Persian cloth and nearly facing ; above, star ; border of dots. *Rev.* Head of Aphrodite l. wearing earring and necklace, all within linear circle.
- 88 AR 0,66 g - 10 mm -  $\uparrow$  - inv. no. 138 (H. Sırrı Göktürk Collection). *Cf.* Lanz 1990, Auktion 54 : no. 267 ; *CNG* (Lancaster) 31 : no. 394 - **Pl. XXVI, 3.**

#### 4.2. PAPHOS (ca. 450 B.C.)

- Obv.* Bull standing l. ; above, winged solar disk ; border of dots. *Rev.* Eagle standing l. ; behind, olive-spray ; incuse square ; **Cypriot *pa pu*.**
- 89 AR 0,97 g - 10 mm -  $\nearrow$  - inv. no. 111.62/14.93. *Cf.* Sear 1979 : no. 5773 - **Pl. XXVI, 4.**

## 5. OTHER DIFFERENT OBOLS FOUND IN CILICIA

## 5.1. CAPPADOCIA (Ariarathes VI, Epiphanes Philopator, 130-116 B.C.)

- Obv.* Draped bust of Ariarathes r. wearing diademed tiara ; border of dots. *Rev.* Ram running l., head reverted ; ΒΑΣΙΛ[ΕΩΣ] [ΑΡΙΑΡΑΘΟΥ].  
 90 AR 0.61 g - 8.5 mm - ↗ - inv. no. 167 (H. Sırrı Göktürk Collection). *Cf.* Dr. Busso Coll. : 343/176 - **Pl. XXVI, 5.**

## 5.2. LYCIA (Erbhina, dynast of Telmessos, 380-360 B.C.)

- Obv.* Helmeted head of Athena r. *Rev.* Head of Herakles r., clad in lion's skin ; incuse square.  
 91 AR 0.36 g - 8 mm - ↑ - inv. no. 121.18/9.95. *Cf.* *Münzen und Medaillen Lis.* 560 : no. 76 - **Pl. XXVI, 6.**

5.3. INCERTI (4<sup>th</sup> cent. B.C.)

- Obv.* Draped bust of Artemis r., bow and quiver at shoulder. *Rev.* Stag standing r. ; before, palm tree.  
 92 AR 0.48 g - 9 mm - → - inv. no. 169 (H. Sırrı Göktürk Collection). Phoenicia-Arados ? - **Pl. XXVI, 7.**
- Obv.* Gorgoneion. *Rev.* Forepart of griffin r., whole in incuse circle.  
 93 AR 0.36 g - 7 mm - → - inv. no. 121.18/7.95 - **Pl. XXVI, 8.**
- Obv.* Bust of Hermes r. wearing petasos. *Rev.* Head of Herakles r., clad in lion's skin, whole in slightly incuse circle.  
 94 AR 0.41 g - 7 mm - ↑ - inv. no. 121.18/8.95 - **Pl. XXVI, 9.**
- Obv.* Blank. *Rev.* Floral ornament in incuse square.  
 95 AR 0.66 g - 8 mm - inv. no. 174 (H. Sırrı Göktürk Collection) - **Pl. XXVI, 10.**

T. G.

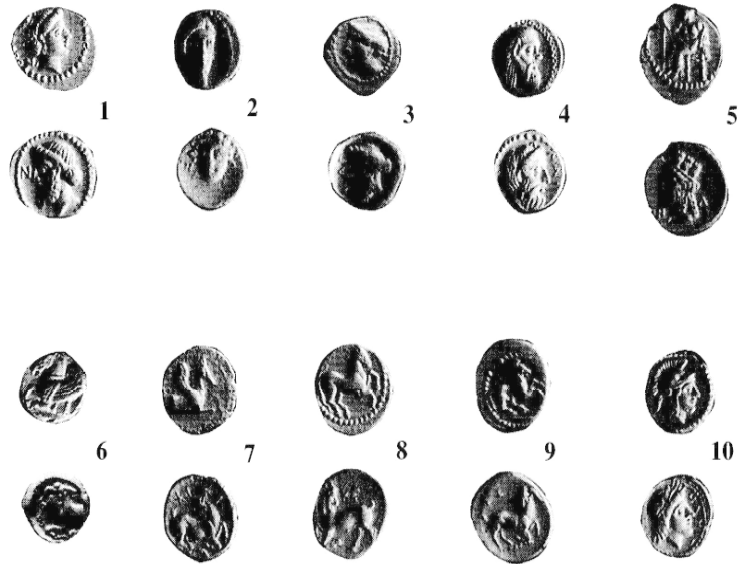
## BIBLIOGRAPHY

- Hill, G. F., 1900 : *Catalogue of the Greek coins of Lycaonia, Isauria and Cilicia*, BMC, London.  
 Sear, D. R., 1979 : *Greek coins and their values*, vol. II : *Asia and North Africa*, London.  
 SNG 1986 : *Switzerland I : Levante-Cilicia*, Berne.  
 SNG 1993 : *France 2 : Cabinet des Médailles-Cilicie*, Ed. Levante, Paris-Zürich, Bibliothèque Nationale de France-Numismatica Ars Classica.

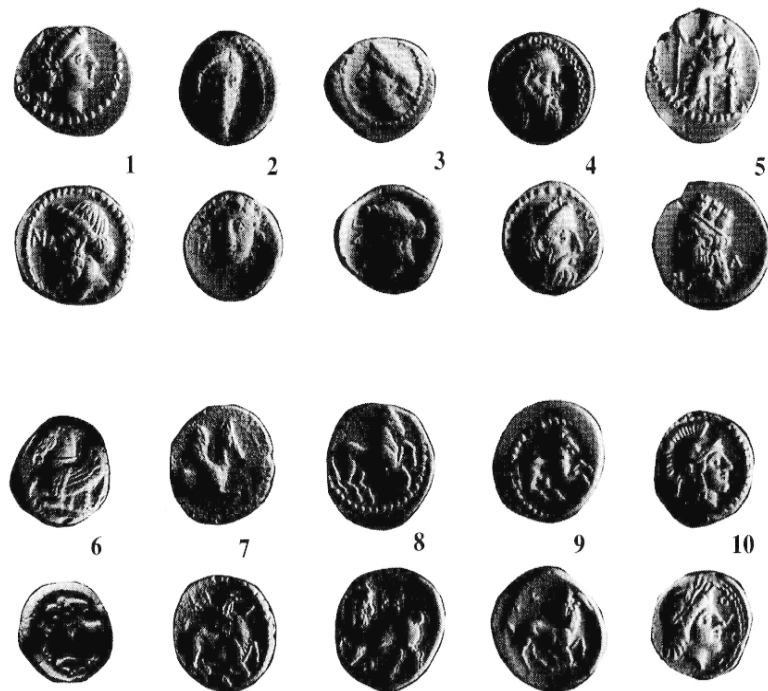


PLANCHE XVII

Scale : 1/1



Scale : 2/1

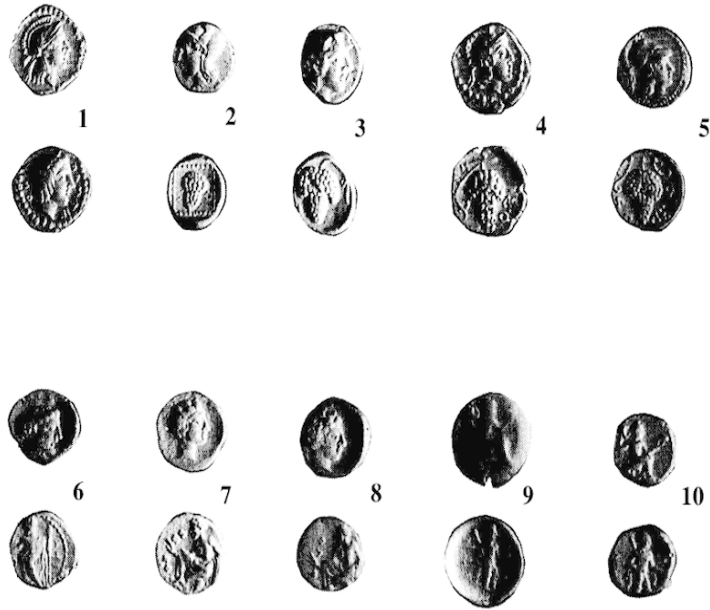


Nagidos 1-5, Kelenderis 6-9, Holmoi 10

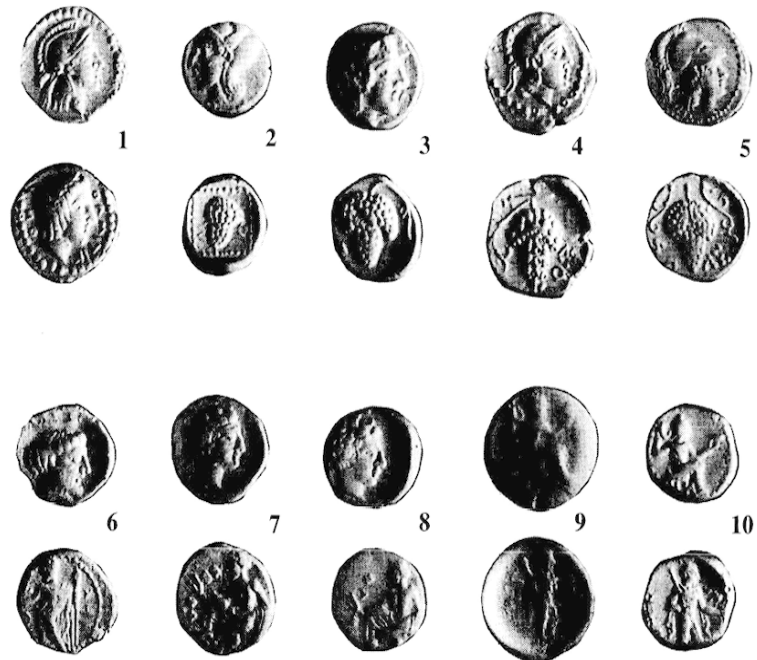


PLANCHE XVIII

Scale : 1/1



Scale : 2/1



Holmoi 1, Soloi 2-5, Tarsos 6-10

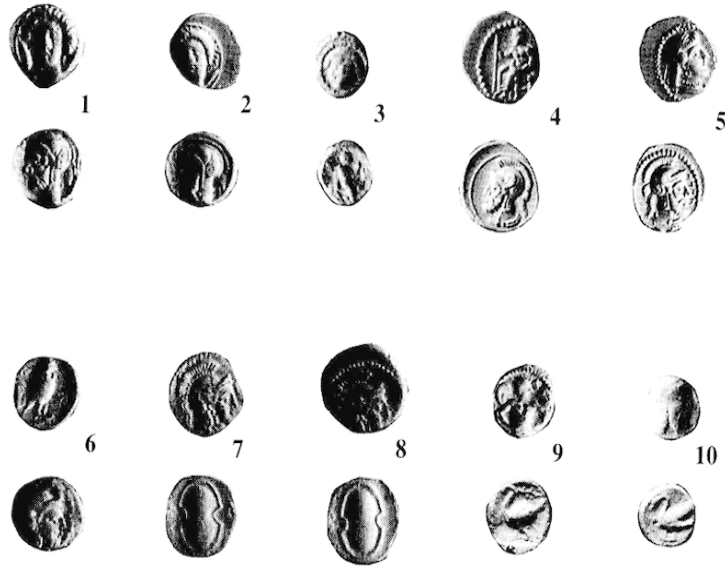
Tevfik GÖKTÜRK, SMALL COINS FROM CILICIA AND SURROUNDINGS



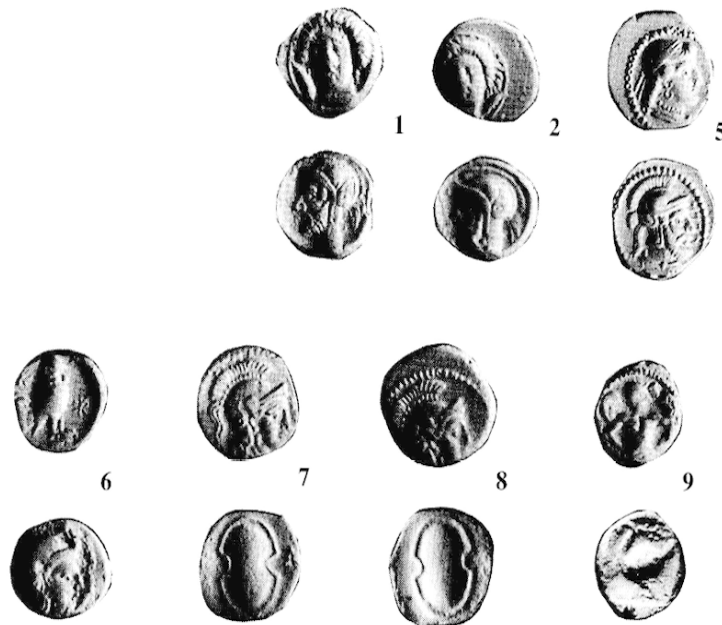


PLANCHE XIX

Scale : 1/1



Scale : 2/1



Tarsos 1-3, Mallos 9-10

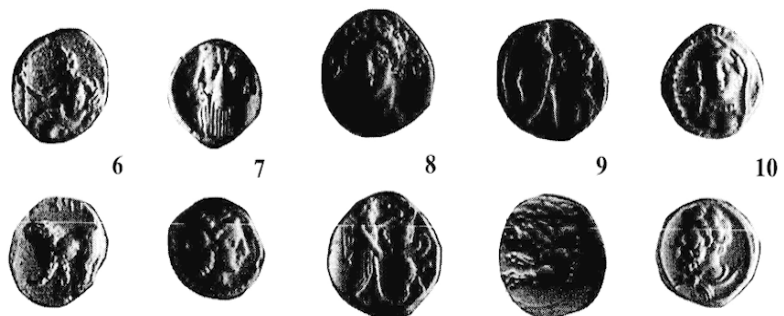


PLANCHE XX

Scale : 1/1



Scale : 2/1

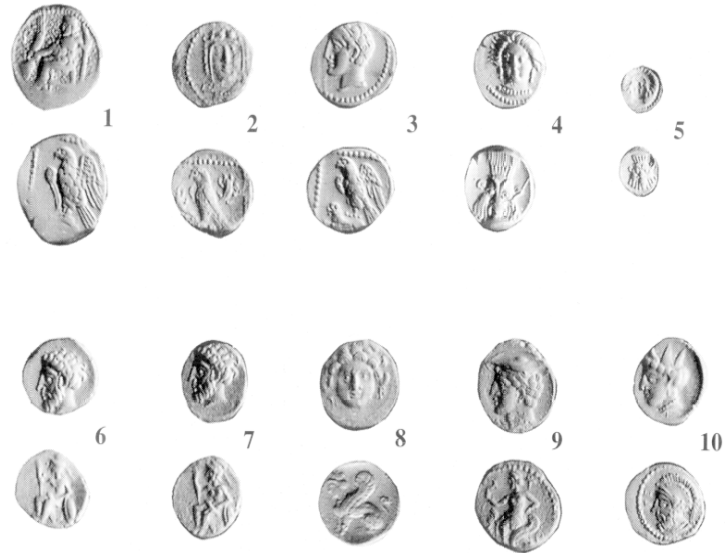


Mallos 1-4, Myriandros ? 5-6, Incerti Cilicia 7-10

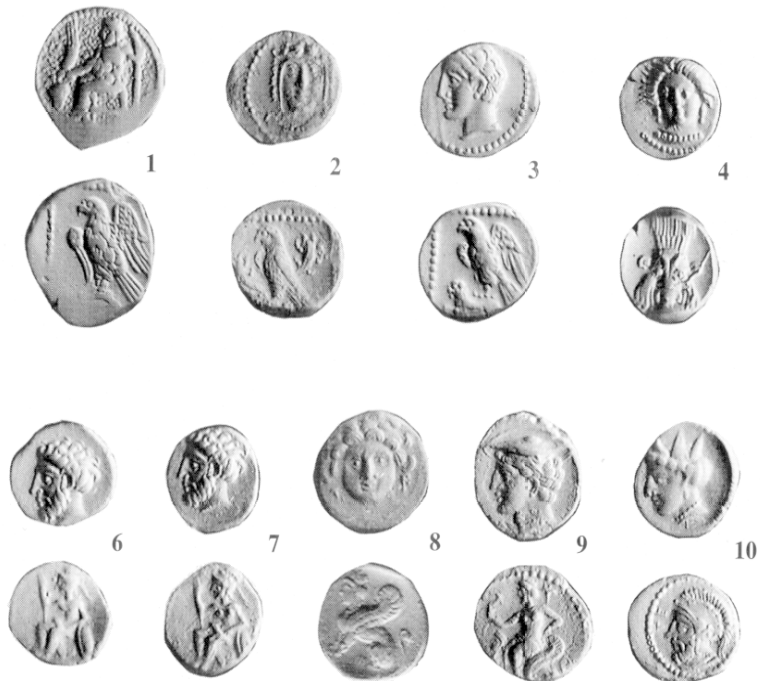


PLANCHE XXI

Scale : 1/1



Scale : 2/1



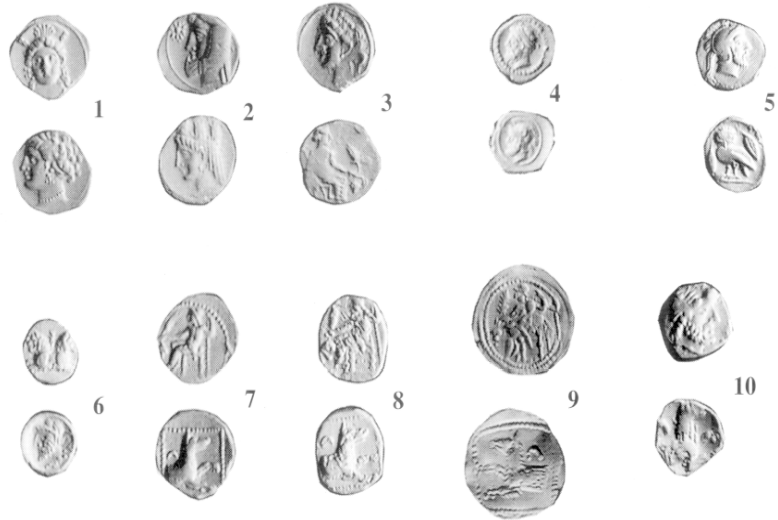
Incerti Cilicia 1-10

Tevfik GÖKTÜRK, SMALL COINS FROM CILICIA AND SURROUNDINGS

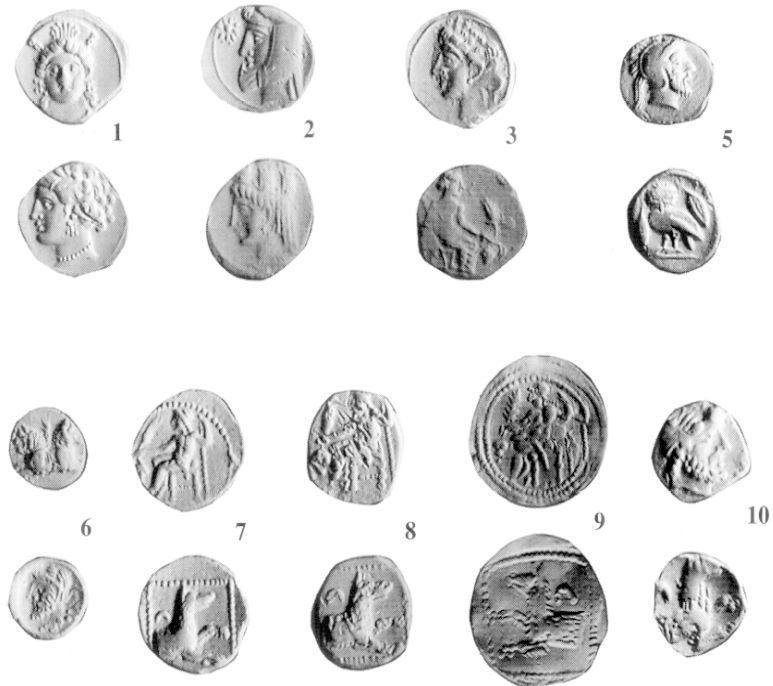


PLANCHE XXII

Scale : 1/1



Scale : 2/1



Incerti Cilicia 1-10

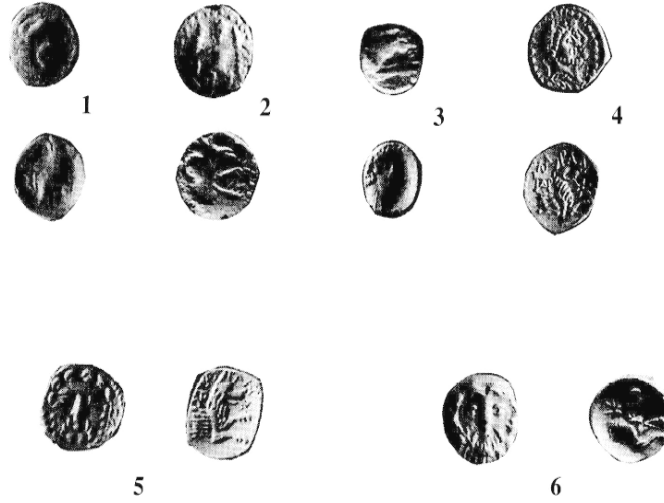
Tevfik GÖKTÜRK, SMALL COINS FROM CILICIA AND SURROUNDINGS



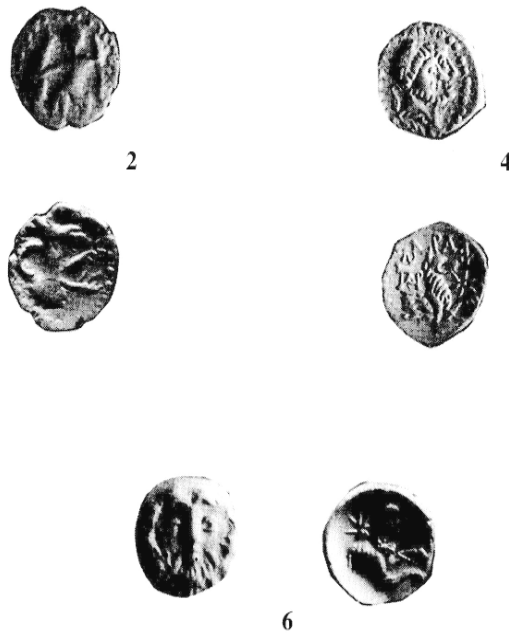


PLANCHE XXIII

Scale : 1/1



Scale : 2/1

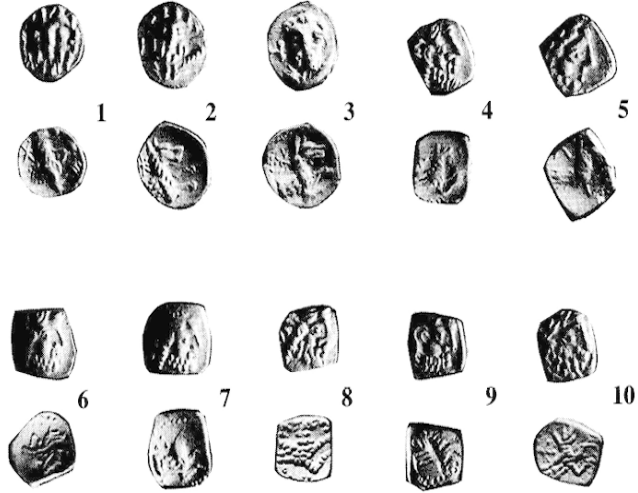


Incerti Cilicia 1-3, Laranda 4-6

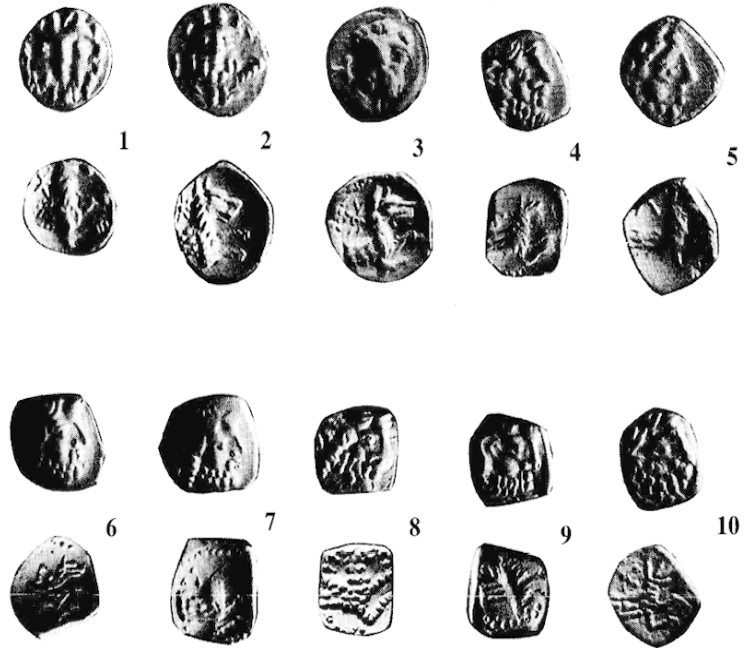


PLANCHE XXIV

Scale : 1/1



Scale : 2/1



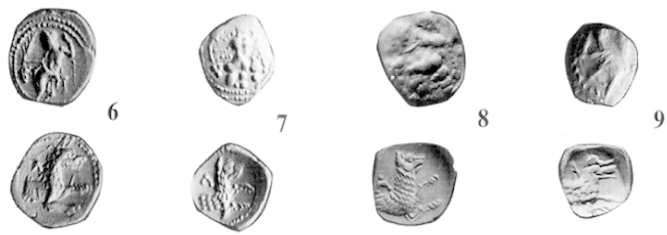
Laranda 1-10

Tevfik GÖKTÜRK, SMALL COINS FROM CILICIA AND SURROUNDINGS



PLANCHE XXV

Scale : 1/1



Scale : 2/1



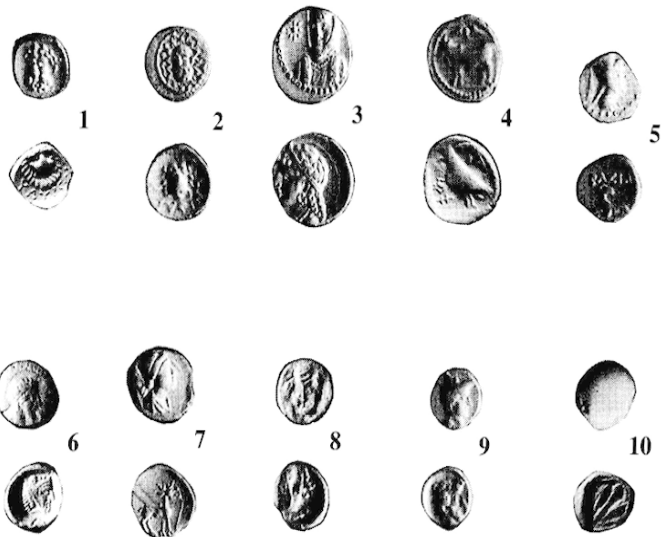
Laranda 1-9

Tevfik GÖKTÜRK, SMALL COINS FROM CILICIA AND SURROUNDINGS

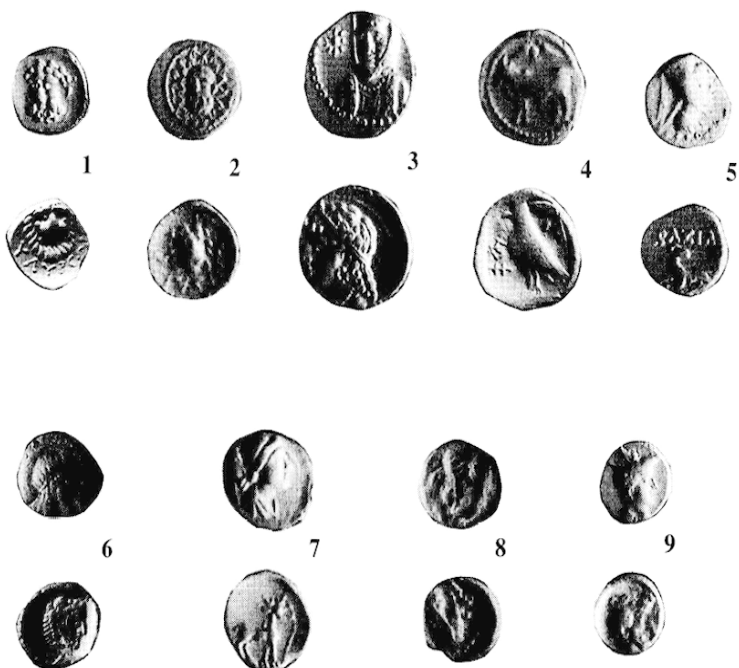


PLANCHE XXVI

Scale : 1/1



Scale : 2/1



Isaura Palaia 1-2, Cyprus 3-4, Cappadocia 5, Lycia 6, Incerti 7-10

Tevfik GÖKTÜRK, SMALL COINS FROM CILICIA AND SURROUNDINGS