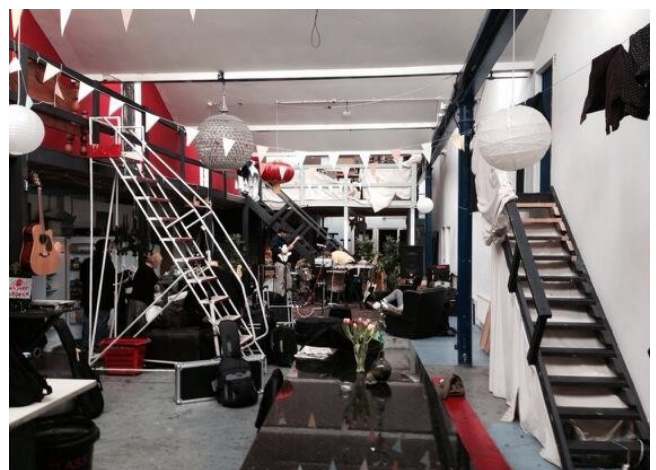


L I V E / W O R K
A sitcom about warehouse life.



A warehouse district in North London. A bustling melting pot of cultures, from the Sunday morning ravers still up from the night before on a beer run, to the African religious groups festooned in their fancy church garb. the area is brimming with life, people appropriating rubbish for their art, amazing graffiti, all walks of life sharing the same area - big, sprawling warehouses with enormous shutters and space for 300+ people dancing the night away share space with people living out of vans and caravans or little converted fixer uppers, cobbled together with timber and corrugated metal.





At the weekend it becomes a debauchery fuelled party area, some of the warehouses become like night clubs with bouncers and a red rope charging on the door, inside drum and bass, psi trance, house, hundreds of people. The day after, a horrific clean up job that takes literally days. This is our setting.

CHARACTERS

We will focus on six characters in one of the smaller warehouse.

GREG

The new guy. He's around 21, a student - he's heard about the lifestyle and thinks it will be good for his creativity.

JACK

Jack is 31, he writes, he takes drugs, he drinks and he's on the dole. He's cynical, funny and clever and has lived in warehouses a long time.

STEPH

A part time teacher, traveller, hippy, happy-go-lucky, free spirit. Likes incense and indian throws and crystals, but isn't annoying, she's a chilled out cool girl and Greg is obsessed with her.

CHRIS

A drug dealer who makes most of his money dealing to the house and surrounding people. He's a rapper, obsessed with expensive rare trainers and conspiracy theories.

SOPHIE

French, super opinionated, her favourite thing to do is kick people out of the house who have out stayed their welcome.

ANNIE

An anomaly, no one knows why she's there, she seems to hate it, makes life difficult for others but refuses to leave. She hardly ever speaks.

