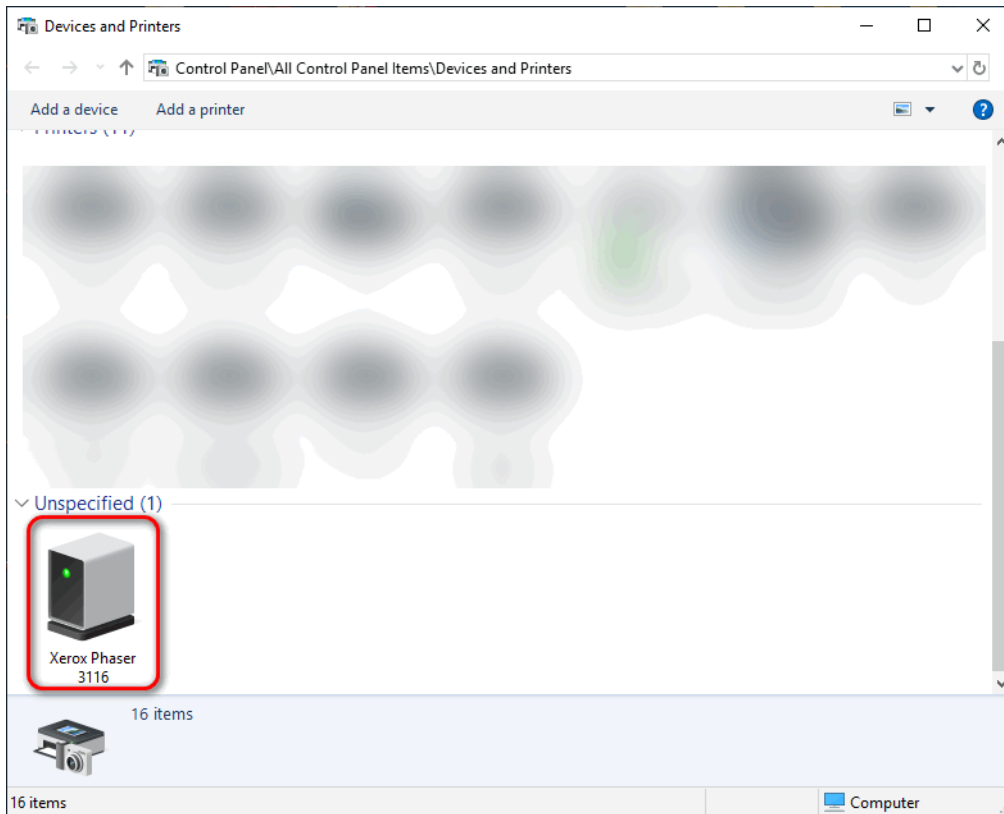
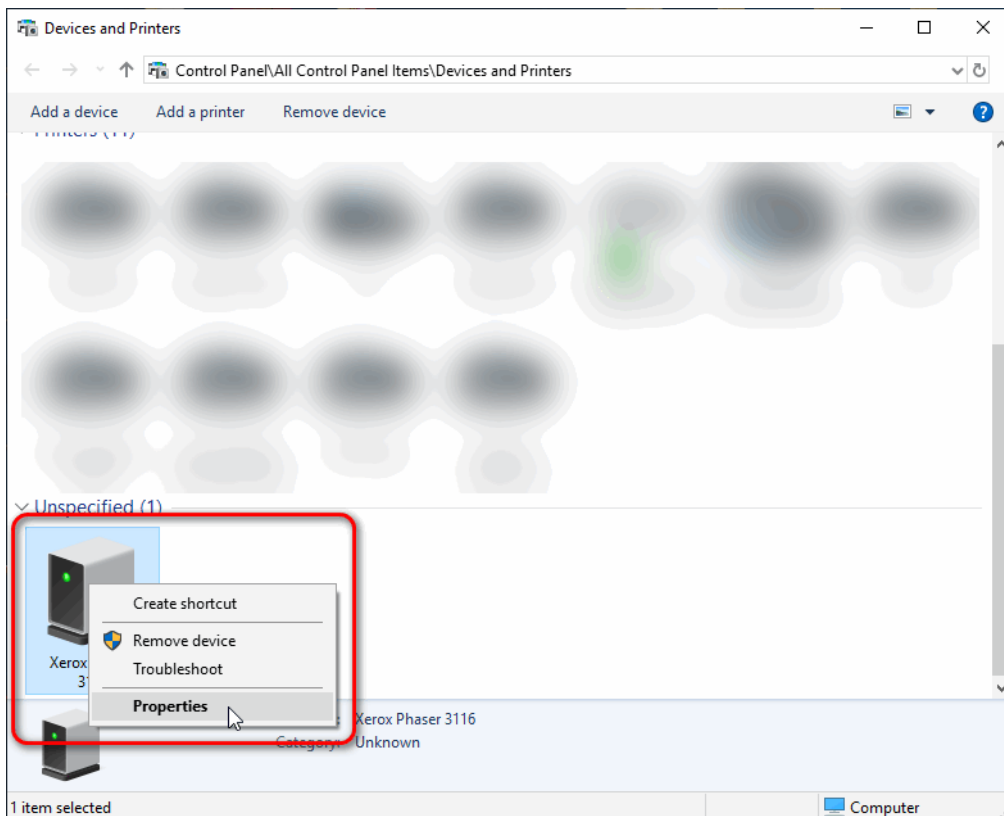


# How To Install The Drivers !!!

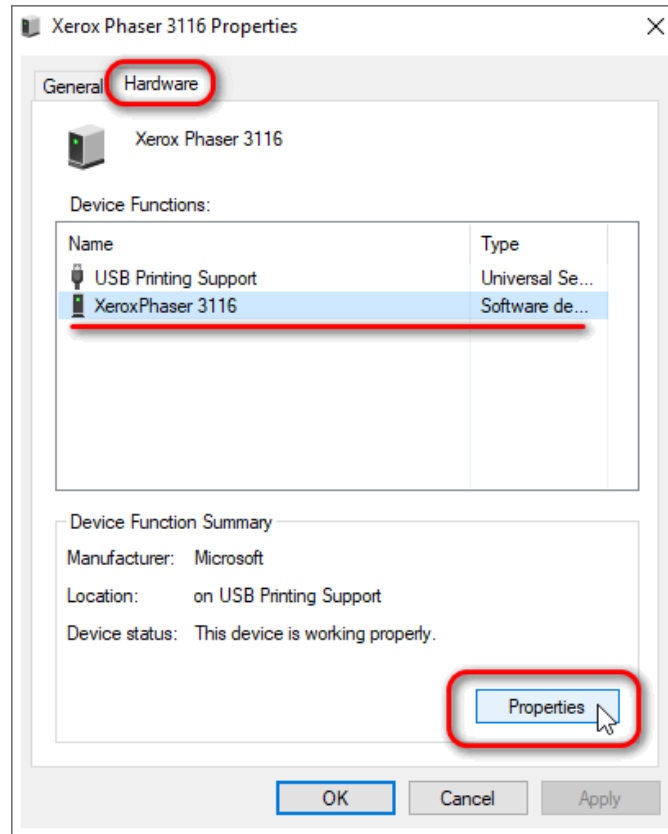
First, connect the printer to the computer. Go to **Control Panel** → **Devices and Printers** (in Windows 10, **Start Menu** → **Windows System** → **Control Panel** → **Devices and Printers**). Xerox Phaser 3116 will show up as below.



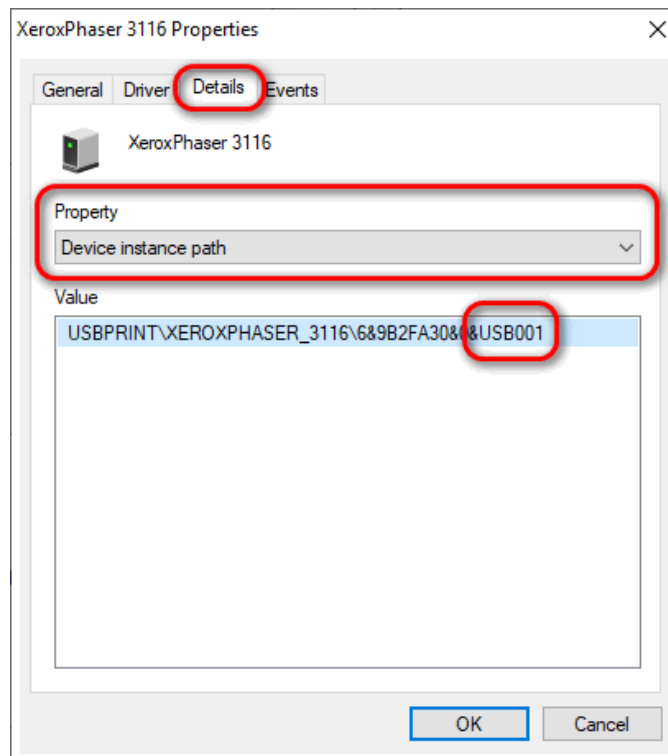
Right click on the device select **Properties**.



The next dialogue box will appear. Go to the Hardware tab, select the **XeroxPhaser 3116** device and click on **Properties**.

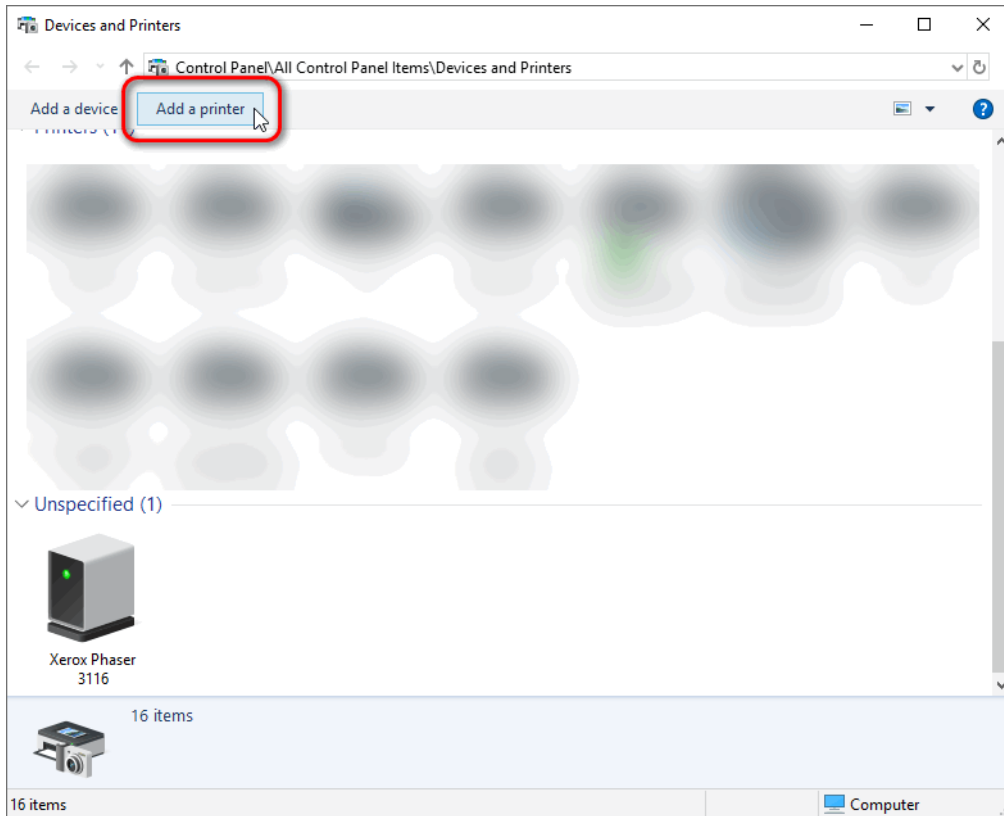


The next dialogue box will appear. Go to the **Details** tab and then select **Device instance path** from the drop-down menu.

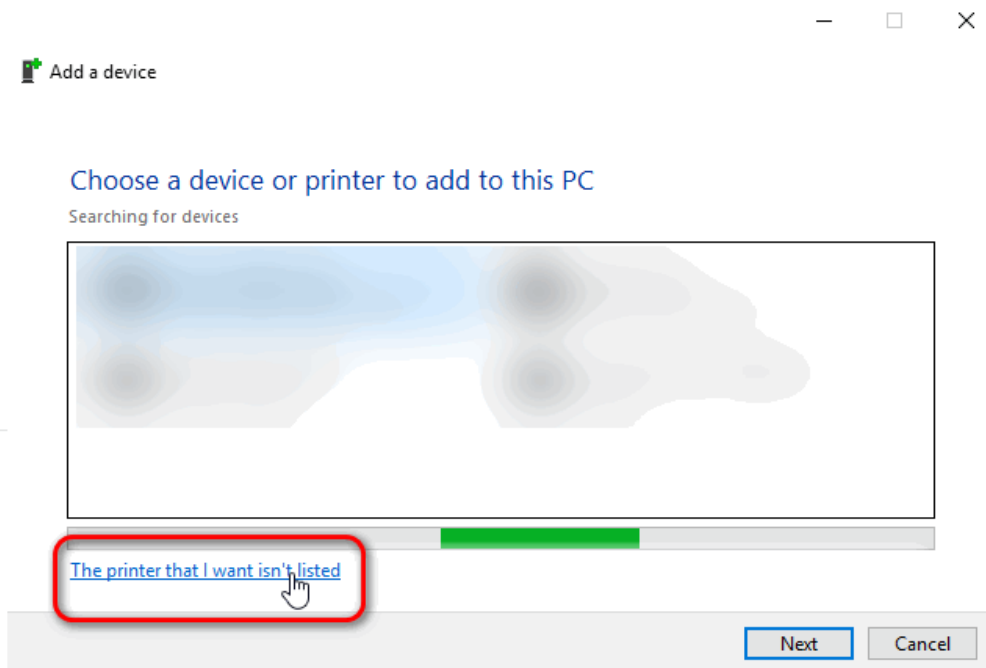


Take note of the last part, i.e. the **USBxyz** part (in this particular case, it's USB001, but it could also be USB002, USB003, USB004, etc.). That's the number of the virtual printer port for USB that the device is using. Write this info down or remember it. You can close all dialogue boxes now.

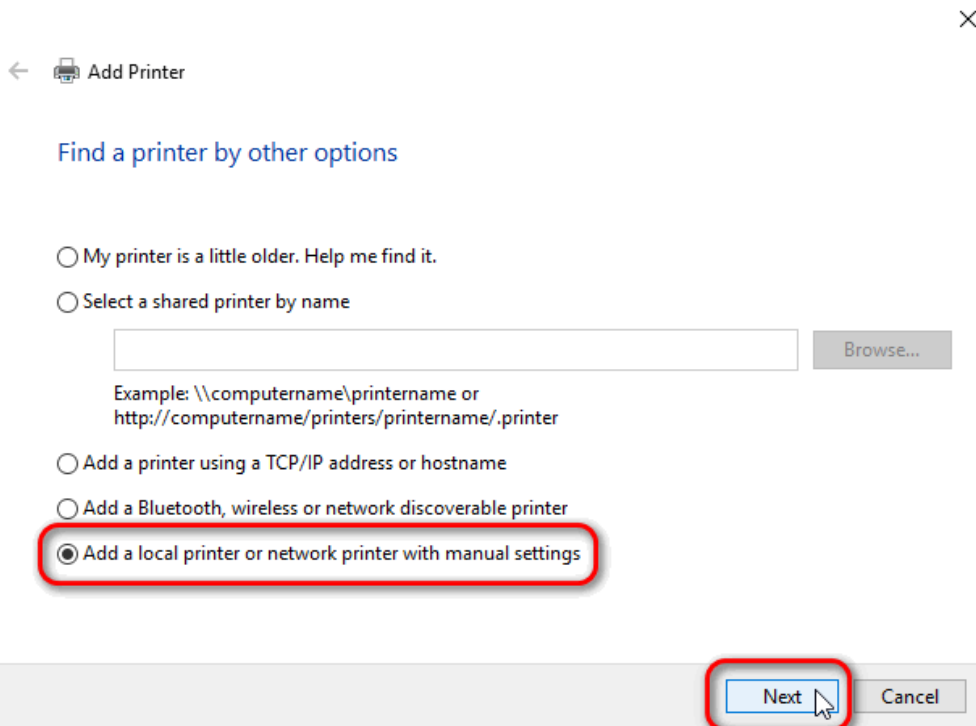
Once again, go to **Control Panel** → **Devices and Printers** and click on the **Add a printer** button.



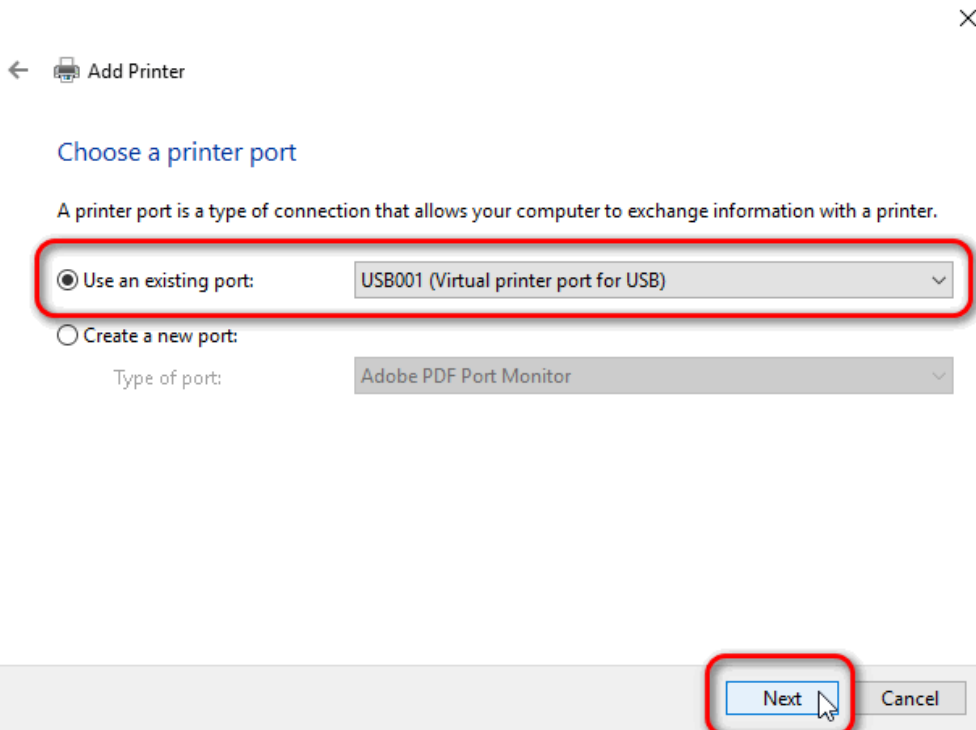
The next dialogue box will appear. Immediately click on the **The printer that I want isn't listed**.



A new dialogue box will appear. Select the **Add a local printer or a network printer with manual settings** radio button. Afterwards, click **Next**.



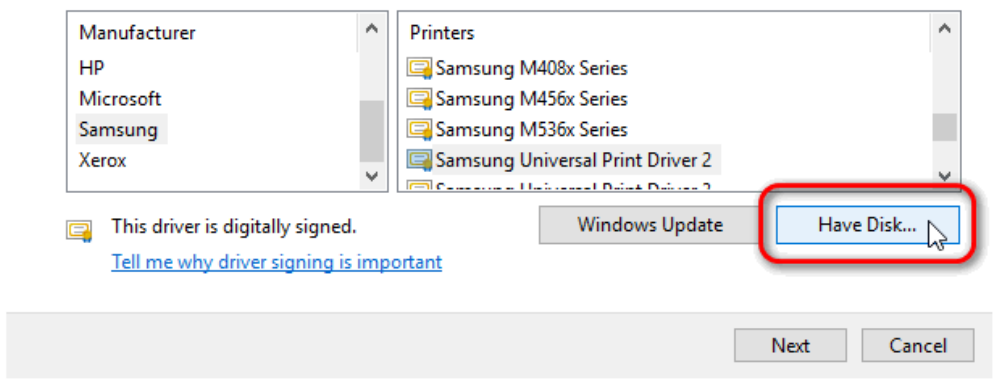
On the next part of the dialogue box, from the **Use an existing port** radio button, from the drop down menu select the **USBxyz (Virtual printer port for USB)**. This is YOUR virtual printer port for USB, the one we had to remember/write down earlier in this document/tutorial. It might not be USB001, as in my case, it might be something else, as in USB002, USB003, etc. Afterwards, click on **Next**.



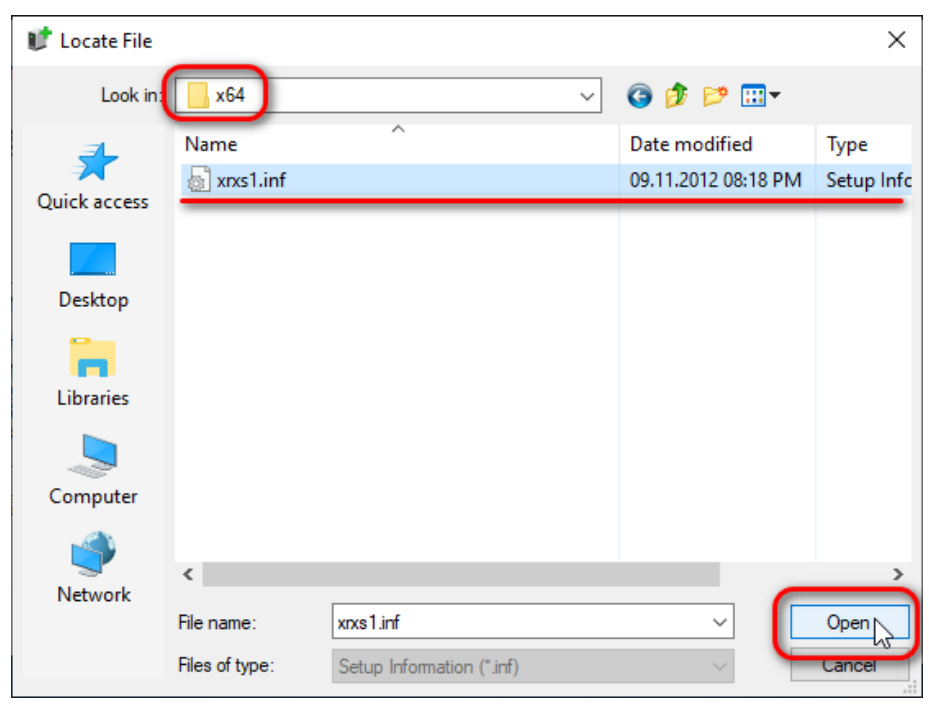
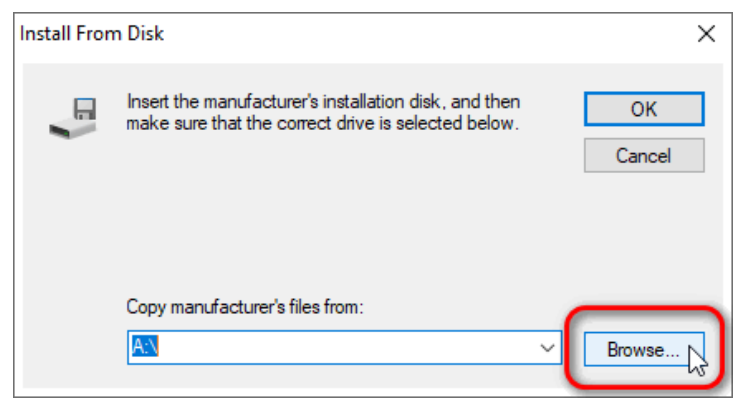
In the next dialogue box, click on the **Have Disk** button.

### Install the printer driver

Choose your printer from the list. Click Windows Update to see more models.  
To install the driver from an installation CD, click Have Disk.

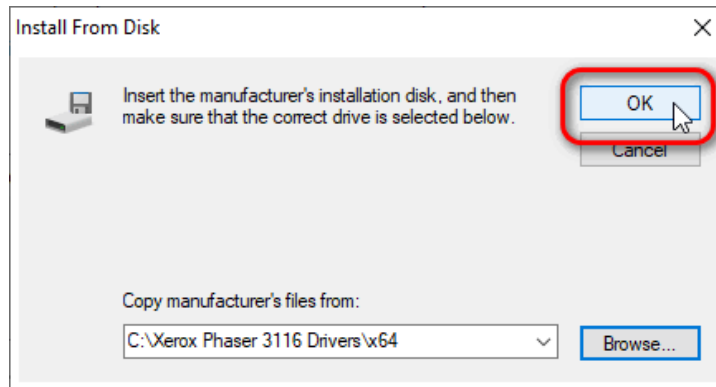


After clicking the **Have Disk** button, the next dialogue box will appear. Click on the **Browse** button and navigate to the directory where you've extracted the drivers.

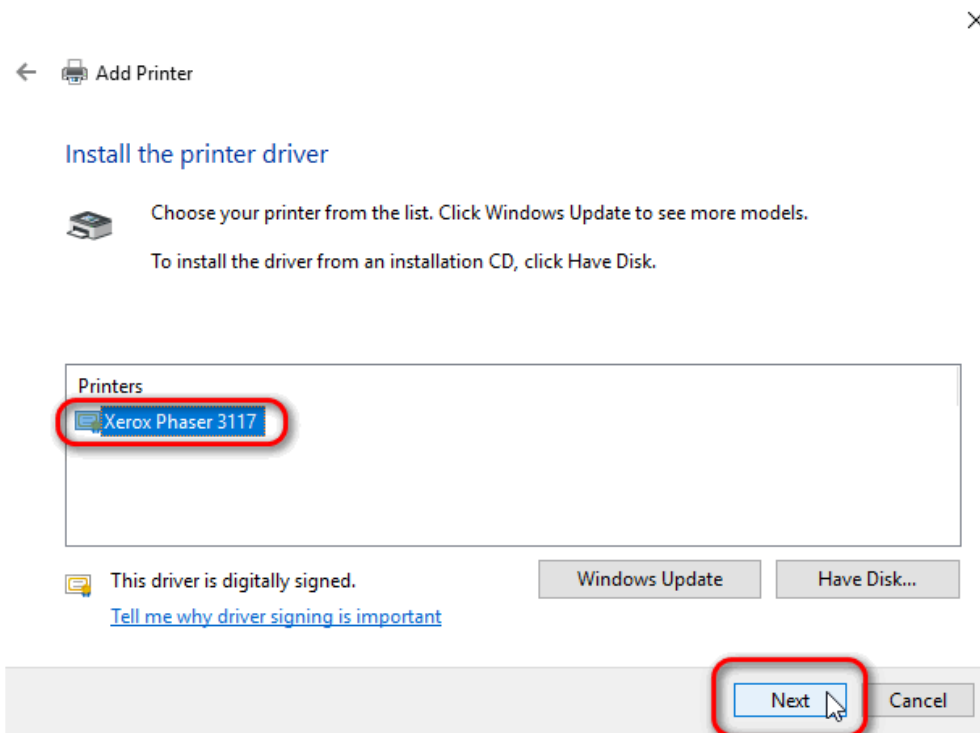


Depending on your operating system's architecture (32-bit or 64-bit), you need to load either the .inf file from the x86 directory (for 32-bit OSes), or from the x64 directory (for 64-bit OSes). In this particular case, I'm installing the driver on a 64-bit (x64) OS, so that's why I'm positioned in the **x64** directory. If I were installing this driver on a 32-bit OS, I'd be positioned and loading the **xrxs1.inf** file from the x86 directory.

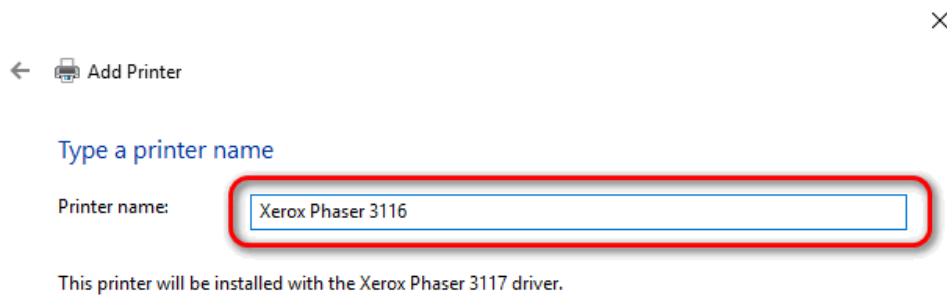
Now, click on the **Open** button. The previous dialogue box will appear.



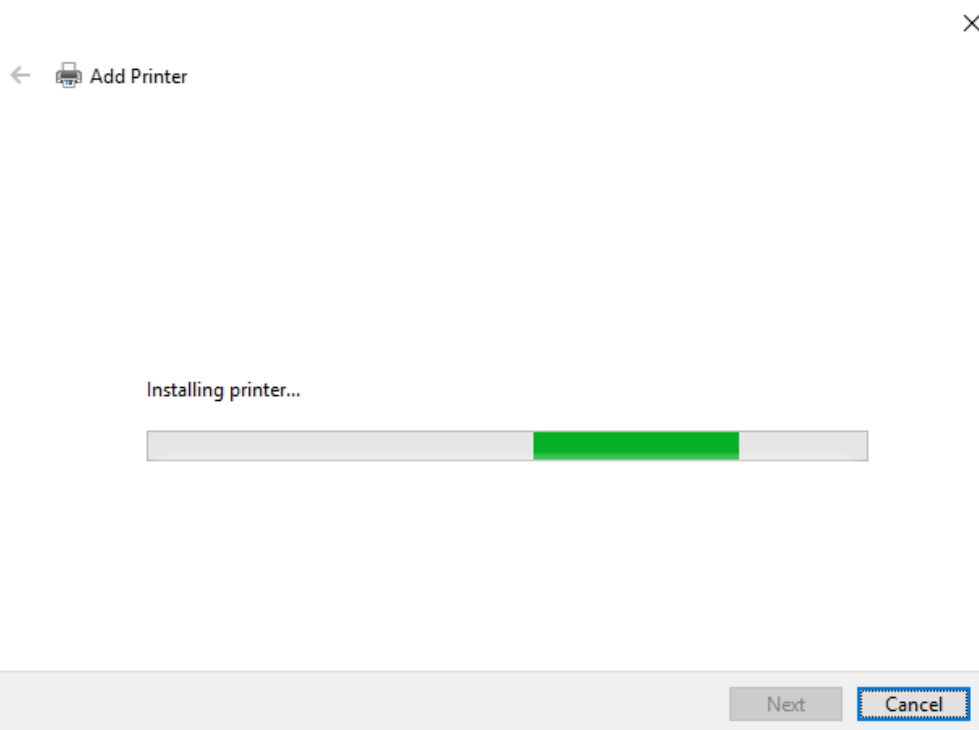
Now, click on the **OK** button. The previous dialogue box will appear, showing **Xerox Phaser 1337** as the drivers for the printer we'd like to install. Click on the **Next** button.



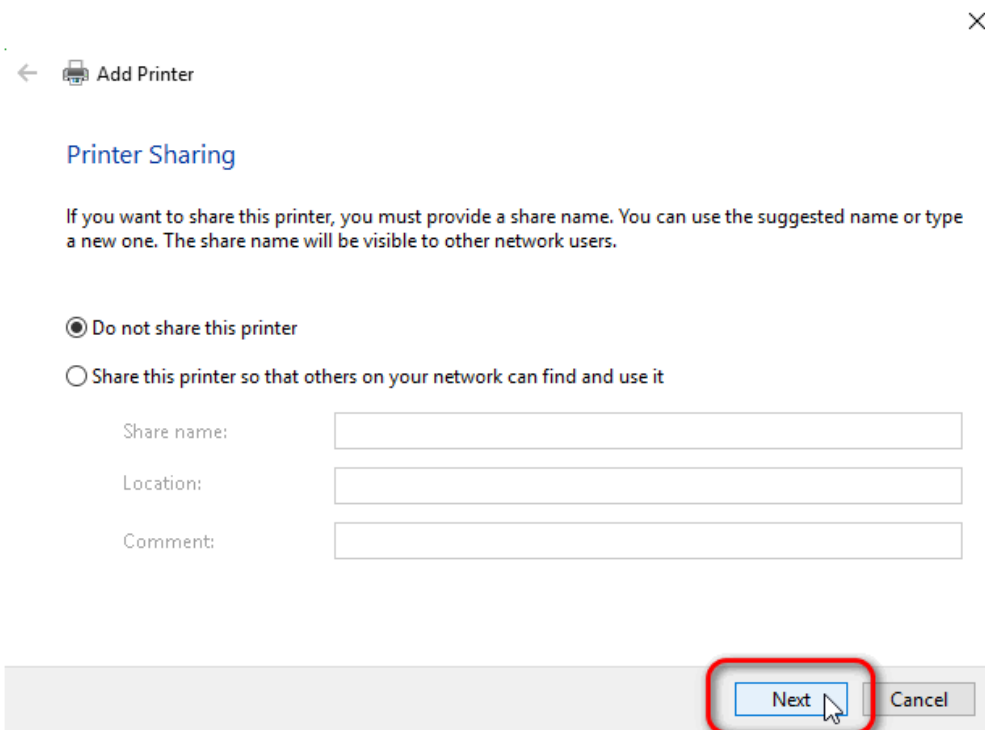
In the next dialogue box, you can change the name of the printer to whatever you want. I'll rename it to **Xerox Phaser 3116**. Afterwards, click the **Next** button.



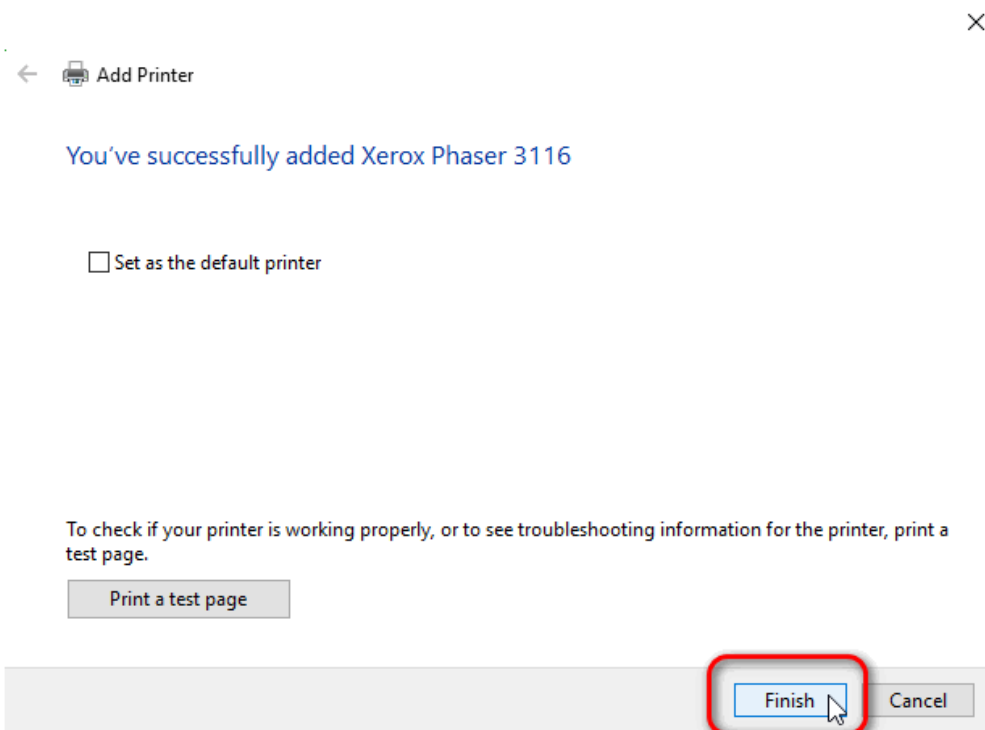
Windows will now install the printer drivers. Don't interrupt the process, don't click the **Cancel** button.



In the next part of the dialogue box, you can choose whether you wish to share this printer or not. In this particular case, I chose not to share it, so I just left the default radio button selection, i.e. **Do not share this printer**. Afterwards, click on the **Next** button.

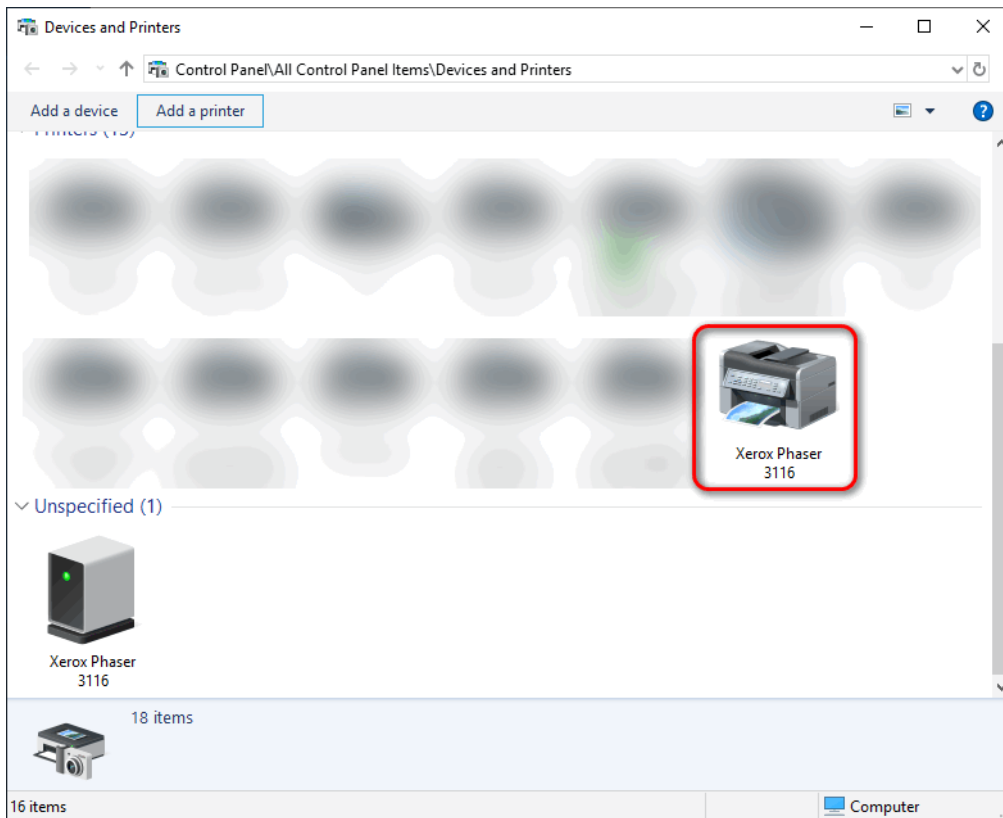


And now, click the **Finish** button.



The printer should now appear in the printers section in **Control Panel → Devices and Printers**.





The **Xerox Phaser 3116** which shows up in the unspecified devices section, will continue to exist/show up, but no worries. The driver Xerox Phaser 3117 driver pipes data to the virtual printer port the printer is listening on (USBxyz) and it'll catch the data coming from the Xerox Phaser 1337 driver and print it.

Enjoy 😊.