



PORSCHE



**The Cayenne**  
Enthusiast driven

<b>The Cayenne concept</b>	<b>5</b>	<b>Interior and comfort</b>	<b>62</b>
Exterior design	6	Lights and visibility	65
Interior design	9	Comfort	66
		Interior	69
<b>Model range</b>	<b>10</b>	Driver assistance systems	70
Cayenne Turbo models	12	Parking and maneuvering aids	72
Cayenne Turbo S		Audio and communication	75
Cayenne Turbo		Infotainment Package	79
Cayenne GTS model	22		
Cayenne S models	29	<b>Personalization</b>	<b>80</b>
Cayenne S E-Hybrid		Colors	82
Cayenne S		Optional Equipment	90
Cayenne model	40	Porsche Car Configurator	91
<b>Drive and chassis</b>	<b>46</b>	<b>European Delivery</b>	<b>102</b>
Transmission	49		
Chassis systems	50	<b>Porsche Exclusive</b>	<b>103</b>
Off-road capability and sports performance	53		
Wheels	54	<b>Panorama</b>	<b>106</b>
<b>Safety and environment</b>	<b>56</b>	<b>Technical data</b>	<b>108</b>
Braking systems	58		
Environment	60	<b>Index</b>	<b>116</b>



Models shown (left to right) | Cayenne S E-Hybrid in White, Cayenne Turbo in Palladium Metallic



## The Cayenne concept



Model shown | Cayenne Turbo in Palladium Metallic



Models shown (left to right) | Cayenne Turbo in Palladium Metallic, Cayenne S in Moonlight Blue Metallic, Cayenne S E-Hybrid in Carrara White Metallic



**There's no greater moment  
than when you surpass yourself.**

### **The Cayenne concept.**

We start families. We build houses. We climb mountains. We've hardly achieved one goal and the next one is already waiting for us. Can't we just stop for a moment?

No, we can't. Nor do we want to. After all, for us, something is only good enough when we've made it even better. Why? Because we are enthusiasts. Because we enjoy accelerating from a standing start—and creating moments full of exhilaration from everyday life.

What does this have to do with cars?  
Nothing. But it has everything to do with

sports cars. You cannot build a sports car without enthusiasm. Nor can you drive one.

What we want to do more than anything else is drive. With plenty of passion. A vehicle that handles the daily commute as supremely as it does the Corkscrew at Laguna Seca, and one that enjoys the short sprint as much as the long distance. One that is designed for the whole family—and yet for us alone. And one that is one thing above all else: a Porsche.

Dynamic performance, five doors, variability, comfort. The Cayenne SUV continues on its path of success. With a new design, new driver-assistance systems, new drive components, and a higher output, yet comparatively low fuel consumption. Having reinvented itself, the Cayenne continues to forge ahead. Straight into the future.

It's actually all about that one moment when you turn the key in the ignition. And what that triggers in you.

The Cayenne.  
Enthusiast driven.

**Enthusiasm comes in many forms.  
But it only has one face.**

**Exterior design.**

Many people dedicate themselves to moving forward, but few leave their mark. Many are full of enthusiasm, but few inspire it in others. How do you recognize the few? Sometimes at first glance.

The prowess of the Cayenne SUV is clearly reflected in the design: the front and rear sections have been completely revised. They are now sharper and even more sophisticated. The new hood, new front quarter panel, new headlights, and modified air intakes lend the car even greater presence. It is more athletic, and muscular than ever before.

The precisely contoured sides make it clear that this is a sports car with character and stature. The new exterior mirrors with integrated indicators and wheels in a range of sizes up to 21 inches—with new attractive styling—serve to emphasize the car's dynamics. An impression that is confirmed by a number of other new details, including daytime running lights featuring four LED spotlights fitted as standard, as well as new LED taillights and integrated tailpipes.

Every detail has been used to highlight what matters most to you: the sporting credibility that only a Porsche can offer. That is our design DNA. The result is clear: distinctive appeal. The Cayenne gives the term enthusiasm a face.











**Race inspired, stylish and high quality:  
plenty of room for great emotions.**

### **Interior design.**

When you take the wheel of a Porsche, you are not just a driver. You are part of something bigger. Part of an overall concept. An idea. One that has its roots in auto racing. This is where we learned how important it is to bring the car and driver together as closely as possible. That's why the interior of the Cayenne SUV is virtually built around you. Everything you need is within easy reach. Practical and exclusively designed to suit your needs.

A typical sports car feature, the rising center console reduces the distance between the steering wheel and the most important vehicle controls. The new multifunction sports steering wheel also speaks the language of motorsports.

Derived from the 918 Spyder, it is a harmonious blend of high-level ergonomics and pioneering styling.

However, the Cayenne concept goes beyond pure sports performance. It also offers comfort, variability, and style. Every individual detail serves to enhance the overall impression. This is our proven design concept.

## Model range



**Models shown (left to right)** | Cayenne S E-Hybrid in Carrara White Metallic, Cayenne GTS in Carmine Red, Cayenne S in Moonlight Blue Metallic



**Sometimes a single look says it all.**

## **The Cayenne Turbo.**

Porsche. Cayenne. Turbo. That's really all you need to set your pulse racing. Uncompromising athleticism combined with superior handling, and a passion for the road.

This is all perfectly embodied by the Cayenne Turbo, a high-performance athlete with turbo-powered performance. The car's exterior design clearly shows what lies within: broad-shouldered, purposeful, and agile. The distinctive front section and large air intakes are striking features that reflect the car's strength and character.

Can we add to this? Yes, with an 'S'. The Cayenne Turbo S is the ultimate powerhouse in the Cayenne family. It represents the sum of all ideas that make up the fascinating appeal of the Cayenne. Put simply: even higher levels of performance and exclusivity. Selected materials wherever you look and feel, from leather and a range of fine woods to carbon. Elegant and sophisticated. Interior equipment taken to new heights.

This is the most powerful Cayenne model. With a breathtaking output of 570 horsepower. Adrenaline in its purest form.







Shown | Cayenne Turbo with Natural Leather Espresso/Cognac interior package





## Cayenne Turbo. A wide selection of standard equipment.

Great emotions. That's what the Cayenne Turbo stands for. And because greatness is all in the details, we've extended the range of standard equipment even further.

- Metallic exterior color
- Brushed Aluminum interior package
- Leather interior with smooth-finish leather
- Roof lining in Alcantara®
- Bose® Surround Sound System with a total output of 585 watts
- Porsche Communication Management (PCM) system with navigation module and 7-in. color touchscreen display
- LED headlights with Porsche Dynamic Light System (PDLS)
- 8-speed Tiptronic S with Auto Start Stop function
- Air suspension featuring self-leveling and ride-height control with Porsche Active Suspension Management (PASM)
- 18-way Adaptive Sports Seats with comfort memory package
- 19-in. Cayenne Turbo wheel
- Daytime running lights with 4 LED spotlights per headlight unit
- LED fog lights
- Anti-theft alarm system with ultrasonic interior surveillance and immobilizer
- Door sill guards in stainless steel with "Cayenne Turbo" logo (front)
- Multifunction sports steering wheel with gearshift paddles
- Automatically dimming interior and exterior mirrors
- ParkAssist (front and rear) with visual and acoustic proximity warning
- Seat heating (front and rear)
- 26.4 gal. fuel tank
- SiriusXM® Satellite and HD Radio™

<sup>1</sup> LED headlights with Porsche Dynamic Light System (PDLS)

<sup>2</sup> Porsche Communication Management (PCM) with navigation module

<sup>3</sup> 18-way Adaptive Sports Seats with comfort memory package



1



2



3 Shown | Cayenne Turbo S with Black and Cream interior package



**Also standard on the Cayenne Turbo S**

- Sport Chrono Package with timer at center of dashboard
- Power Steering Plus
- Porsche Torque Vectoring Plus (PTV Plus)
- Porsche Dynamic Chassis Control (PDCC)
- Porsche Ceramic Composite Brake (PCCB)
- 21-in. 911 Turbo Design wheels with a polished rim flange and inner black finish (high-gloss) with wheel centers and full-color Porsche Crest (exclusive to the Cayenne Turbo S)
- Air intake grilles with slats painted black (high-gloss)
- Exterior mirror lower trim and mirror base painted black (high-gloss)
- Wheel arch extensions in exterior color
- Roof spoiler in exterior color
- Twin dual-tube sports tailpipes in high-gloss polished aluminum
- LED headlights with Porsche Dynamic Light System Plus (PDLS Plus)
- Porsche Crest embossed on head restraints (front and outer rear seats)
- Five round instruments with 'Turbo S' logo on tachometer
- Leather interior package in two-tone combination. Standard: Black and Cream (exclusive to the Cayenne Turbo S)
- Carbon interior package
- Door sill guards in stainless steel with "Cayenne Turbo S" logo (front)
- Black floor mats with "PORSCHE" logo and edging in contrasting color

1 Sport Chrono Package

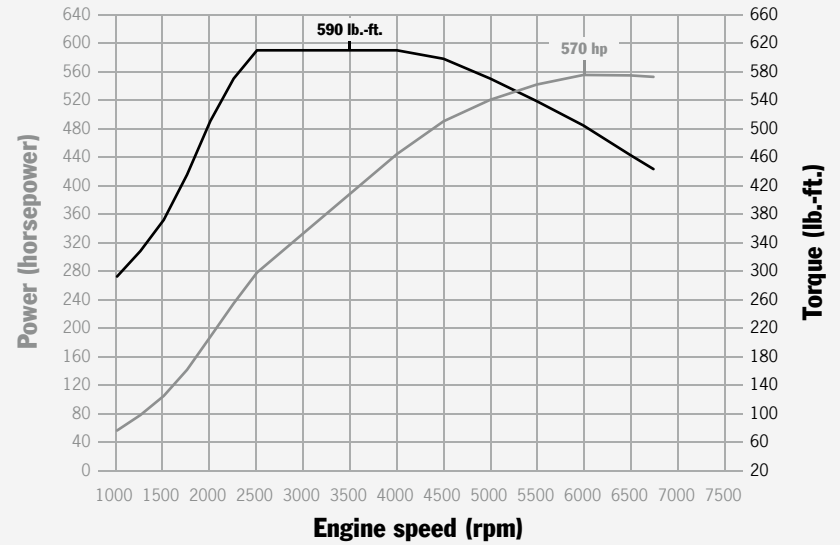
2 21-inch 911 Turbo Design wheel with Porsche Ceramic Composite Brake (PCCB)

3 Leather interior package in two-tone combination. Standard: Black and Cream

## The drive system of the Cayenne Turbo S.

An enduring Porsche principle: maximum performance. Uncompromisingly embodied by the Cayenne Turbo S. At its heart, a 4.8-liter twin-turbo V8 engine.

- 4.8-liter twin-turbo V8 engine (EU6)
- 570 horsepower at 6,000 rpm
- Maximum torque: 590 lb.-ft. between 2,500 and 4,000 rpm
- Acceleration from 0 to 60 mph: 3.8 seconds
- Top track speed: 176 mph
- Fuel consumption in MPG (EPA estimated):
  - 14 (city)
  - 21 (highway)
  - 17 (combined)
- Direct fuel injection (DFI)
- SPORT and SPORT PLUS button
- Thermal management
- VarioCam Plus
- Integrated dry sump lubrication
- Auto Start Stop and coasting function
- Active air flaps
- Twin-turbocharging system with charge-air cooling



Cayenne Turbo S: 590 lb.-ft. between 2,500 and 4,000 rpm, 570 hp at 6,000 rpm



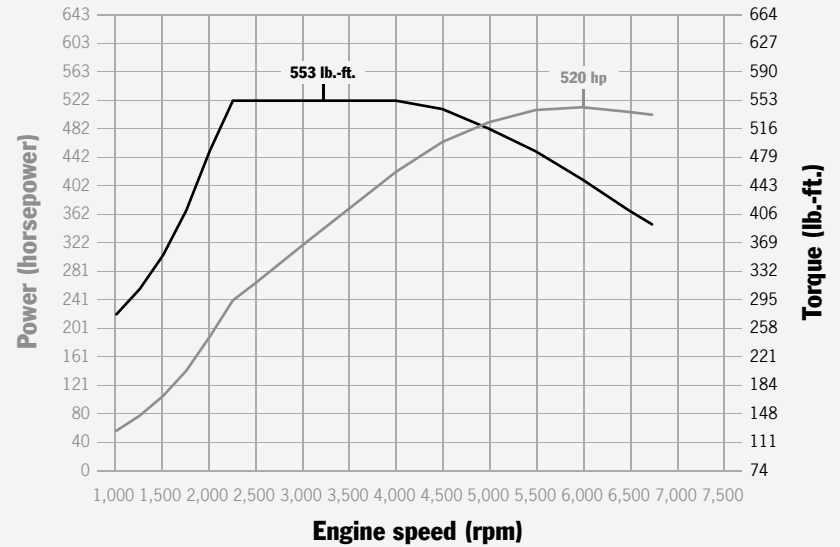


## The drive system of the Cayenne Turbo.

Porsche through and through. That's the Cayenne Turbo with its 4.8-liter twin-turbo V8 engine. Boasting the direct response typical of a sports car, phenomenal power, and high levels of torque, it offers exhilarating and cultured performance.

- 4.8-liter twin-turbo V8 engine (EU6)
- 520 horsepower at 6,000 rpm
- Maximum torque: 553 lb.-ft. between 2,250 and 4,000 rpm
- Acceleration from 0 to 60 mph: 4.2 seconds (4.1 seconds<sup>1)</sup>)
- Top track speed: 173 mph
- Fuel consumption in MPG (EPA estimated):
  - 19 (city)
  - 24 (highway)
  - 21 (combined)

- Direct Fuel Injection (DFI)
- Integrated dry sump lubrication
- VarioCam Plus
- Exhaust-gas turbocharging system and intercooler
- Thermal management
- Auto Start Stop
- Active air flaps



Cayenne Turbo: 553 lb.-ft. between 2,250 and 4,000 rpm, 520 hp at 6,000 rpm



<sup>1)</sup> In conjunction with Sport ChronoPackage (Performance Start).



## Bringing racing emotions to the point. And to the road.

### The Cayenne GTS.

The Cayenne GTS provides a concentrated dose of enthusiasm. It is a highly emotional top athlete designed for impressive performance. This is evident from the large air intakes which are both characteristic and striking.

The 3.6-liter twin-turbo V6 engine with Direct Fuel Injection (DFI) offers a level of power that's usually only to be found on the racetrack. An output of 440 horsepower leaves nothing to be desired, while the lowered steel-spring suspension with Porsche Active

Suspension Management (PASM) ensures a more direct driving experience.

A typical racing sound is provided at the push of a button by the Sport exhaust system, fitted as standard. This can be seen from the black twin tailpipes and heard from the throaty roar which changes depending on your driving style.

Athletic, powerful, and muscular. The Cayenne GTS is a car designed for great emotions. Racing emotions.









## The Cayenne GTS. A selection of standard equipment.

- Sports exhaust system with twin tailpipes in black
- 8-speed Tiptronic S with Auto Start Stop function
- Lowered steel-spring suspension with Porsche Active Suspension Management (PASM)
- Cayenne Turbo brakes featuring red calipers
- 20-in. RS Spyder Design wheels in black (satin finish) and wheel centers with full-color Porsche Crest
- Tire Pressure Monitoring System (TPMS)
- SportDesign package
- Monochrome black exterior package (high-gloss)
- Bi-Xenon™ headlights in black with Porsche Dynamic Light System (PDLS)
- Daytime running lights with four LED spotlights per headlight unit
- Integral fog lights on front apron
- Black LED taillights
- Two-zone climate control
- GTS sports seats with 8-way electric adjustment and embroidered 'GTS' logos on the front and outer rear head restraints
- Cayenne GTS rear seats with seat centers in Alcantara®, outer left and right, and fore/aft and backrest angle adjustment
- Anti-theft alarm system with ultrasonic interior surveillance and immobilizer
- Cruise control
- Leather interior package in standard color, smooth-finish leather, with extensive Alcantara® package
- Brushed Aluminum interior package
- Door sill guards in stainless steel with 'Cayenne GTS' logo in black
- Multifunction sports steering wheel with gearshift paddles
- CDR audio system with 7-in. color touchscreen display
- Automatic tailgate

1 Sports exhaust system with twin tailpipes in black

2 Door sill guards in stainless steel with "Cayenne GTS" logo in black

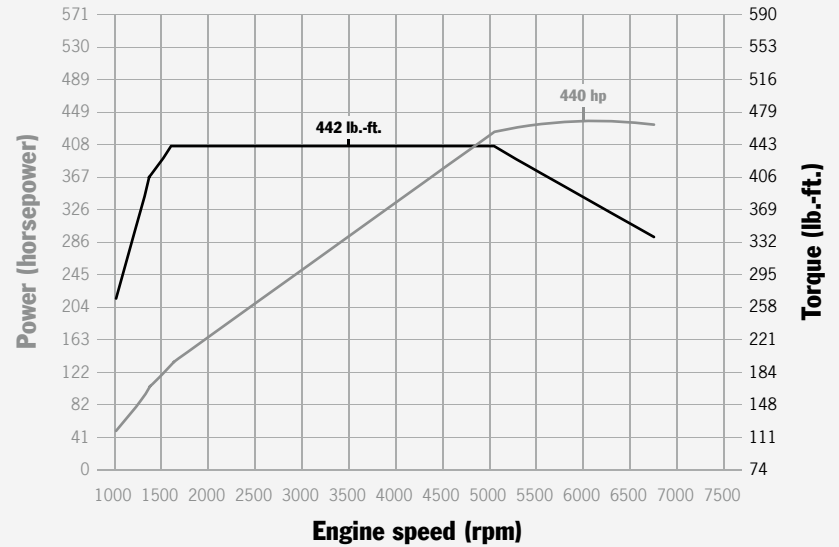
3 GTS sports seats with 8-way electric adjustment and embroidered "GTS" logos on the front and outer rear head restraints

## The drive system of the Cayenne GTS.

The best way to experience something is up close. That's why the Cayenne GTS brings you into closer contact with the road. Its steel-spring suspension with Porsche Active Suspension Management (PASM) is lowered by 24 mm. For a sportier setup, a more direct driving experience, and breathtaking performance.

- 3.6-liter twin-turbo V6 engine (EU6)
- 440 horsepower at 6,000 rpm
- Maximum torque: 442 lb.-ft. between 1,600 and 5,000 rpm
- Acceleration from 0 to 60 mph: 4.9 seconds (4.8 seconds<sup>1)</sup>)
- Top track speed: 163 mph
- Fuel consumption in MPG (EPA estimated):
  - 16 (city)
  - 23 (highway)
  - 19 (combined)
- Direct Fuel Injection (DFI)
- Sport button
- Thermal management system or technology
- VarioCam Plus
- Auto Start Stop and coasting function
- Active air flaps
- Twin-turbocharging system with charge-air cooling

<sup>1)</sup> In conjunction with Sport ChronoPackage (Performance Start).



Cayenne GTS: 442 lb.-ft. between 1,600 and 5,000 rpm, 440 hp at 6,000 rpm







PORSCHE  
*Cayenne S*

*Cayenne S*

*e-hybrid*

**“S” for some, is just a letter.  
For us, it’s an expression of enthusiasm.**

### **The Cayenne S models.**

“S” stands for sport. Yet sport does not only mean sports performance. It not only stands for driving pleasure, but also for a commitment. Not to power alone, but also to abundant reserves of power. In short: outstanding athleticism requires high levels of efficiency.

This is demonstrated, in particular, by the Cayenne S E-Hybrid, which combines two aspects that have always fired our enthusiasm: sportiness and the future. A parallel plug-in hybrid that boasts plenty of agility. After all, even when it comes to alternative drive systems, for us, there is no alternative to dynamic performance.

The Cayenne S achieves something quite special: enhanced power with greater fuel economy. This is ensured by the new 3.6-liter twin-turbo V6 engine. The intelligent lightweight construction of the new engine also contributes to the impressive fuel economy. In short: the perfect balance between output and efficiency.

## Cayenne S models. A selection of standard equipment.

More extensive standard equipment – for greater enjoyment behind the wheel.

- Porsche Communication Management (PCM) system with navigation module and 7-in. color touchscreen display
  - Bi-Xenon™ headlights
  - 8-speed Tiptronic S with Auto Start Stop function
  - 2-zone climate control
  - Comfort seats (front) with 8-way electric adjustment
  - Rear seats with fore/aft and backrest angle adjustment
  - 19-in. Cayenne Design II wheel
  - Daytime running lights with four LED spotlights per headlight unit
  - Integral fog lights on front fascia
  - Anti-theft alarm system with ultrasonic interior surveillance and immobilizer
  - Door sill guards in stainless steel with “Cayenne S” logo (front)
  - Multifunction sports steering wheel with gearshift paddles
  - Power Steering Plus
  - HD Radio™
  - ParkAssist front and rear
- (Also standard on the Cayenne S E-Hybrid)**
- Porsche Active Suspension Management (PASM)
  - “e-hybrid” logo in Acid Green on both front quarter panels
  - “Cayenne S” logo in Acid Green on the tailgate
  - Acid Green brake calipers
  - Porsche universal charger (AC) with charging dock and pouch
  - Porsche Car Connect (PCC) with charge status display and range management

1 Saddle Brown interior package

2 Multifunction sports steering wheel with gearshift paddles

3 8-speed Tiptronic S







## Our solution for the future— simply electrifying.

### The Cayenne S E-Hybrid.

We are only satisfied when we are not content with being satisfied. And that means scrutinizing every aspect, again and again. Even things that are already well established. Such as the tried and tested Porsche hybrid concept: the vehicle can be powered by the combustion engine alone, solely by the electric machine or by both drive systems working in tandem. A single letter—the “E”—is now having a great impact. Through the use of a vehicle charge port, it combines a future-oriented drive with the comprehensive concept of e-mobility. From the Hybrid, we've developed the

E-Hybrid—one of the first parallel plug-in hybrid models in the SUV segment.

The high-voltage lithium-ion battery has an energy capacity of 10.8 kW and can be charged using a conventional socket in approx. 3 hours<sup>1</sup>. The battery is maintenance free and comes with a 6-year warranty.

New standards are also being set by the practical charging equipment. Thanks to the optional on-board charger with 7.2 kW, you can conveniently charge your car using the charging cable. With the

on-board charger, the charging time<sup>1</sup> is reduced to 1.3 hours. For charging at home, there's the standard Porsche universal charger (AC) with charging dock.

Another giant leap forward, for the Cayenne and for you. Right into the future.

<sup>1</sup> Charging time: approx. 1.3 hrs with 7.2-kW on-board charger and 240V/15A circuit; approx. 3 hrs with 3.6-kW charger and 240V/15A circuit; 9 hrs with 3.6-kW charger and 120V/10A circuit.

<sup>1</sup> Hybrid components on the Cayenne S E-Hybrid  
<sup>2</sup> The Cayenne S E-Hybrid charging



Model shown | Cayenne S E-Hybrid in White



1



2





1



**Acceleration is key for us.  
It's also key in the digital age.**

**E-mobility and Porsche Car Connect (PCC).**

The world is turning faster and faster. It's good if you can keep up. And even better, if you can stay one step ahead. Our solution: e-mobility. An overall concept that combines a pioneering drive system, practical charging options, intelligent mobile online services, and efficient performance.

2



E-Mobility Services are part of Porsche Car Connect (PCC)<sup>1</sup>. They enable you to call up all the important information about your Cayenne S E-Hybrid remotely via a smartphone app. Using Remote Services, you can find out statistical data on your

vehicle, such as the distance driven, average speed, or fuel consumption on the last trip. In addition, you can view information on the remaining charging time, battery charge status, or a visual depiction of the electric range. You can also set the charge timer with customizable charging times, while Carfinder shows you the shortest route back to your Porsche from your current location.

Another particularly practical function: Porsche Car Connect (PCC) allows you to check the status of your alarm system

or make a breakdown call at any time from virtually any location<sup>2</sup>. Using a compatible smartphone, you can control the charging process, along with other functions, such as the optional auxiliary climate control, which allows you to heat or cool the interior in advance of any journey.

Of course, the future will come whatever happens. However, we intend to meet it along the way.

1, 2 Porsche Car Connect (PCC)

<sup>1</sup> Services are included for a certain period (E-Mobility Services: 5 years, Remote Services and PVTS Services: 6 months) and can then be extended for an annual charge.

<sup>2</sup> Internet connection required.

## The drive system of the Cayenne S E-Hybrid.

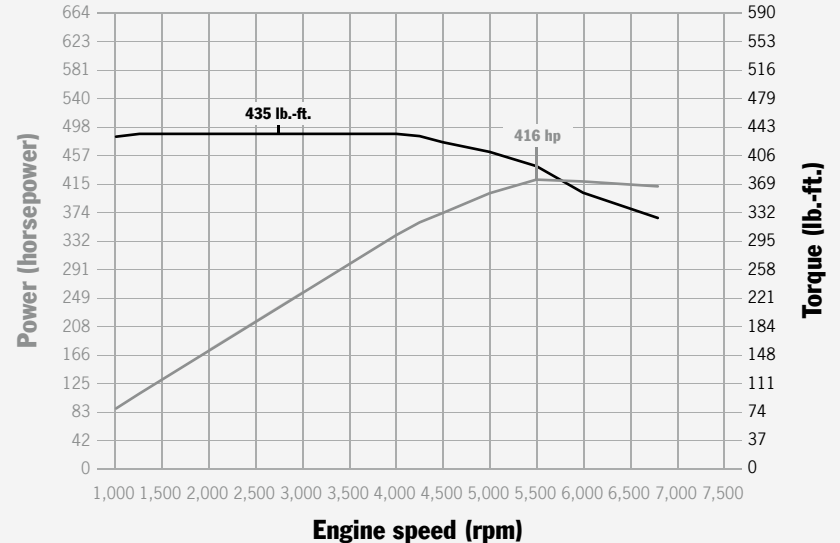
We are moving into the future in a progressive and dynamic way. A specially defined pressure point on the accelerator pedal signals the switch between all-electric mode and driving powered by the combustion engine. The combustion engine is fired up when necessary or when the accelerator is depressed beyond the pressure point.

- 3.0-liter V6 supercharged engine (EU6)
- Electric machine: 95 horsepower
- combustion engine: 333 horsepower
- Combined output of 416 horsepower at 5,500 rpm
- Maximum torque (plug-in hybrid): 435 lb.-ft. between 1,250 and 4,000 rpm
- Acceleration from 0 to 60 mph: 5.4 seconds
- Top track speed: 151 mph, all-electric: 78 mph
- Fuel consumption in MPG (EPA estimated):  
21 (city)  
24 (highway)  
22 (combined)
- Direct Fuel Injection (DFI)
- Variable valve lift
- Thermal management
- Pressure point on accelerator for controlling electric mode
- Active air flaps
- High-voltage battery: 10.8 kW
- Charging time<sup>1)</sup>: approximately 3 hrs with 3.6 kW on-board charger/ approximately 1.3 hrs with 7.2 kW on-board charger
- Recuperative braking system
- "e-charge" and "e-power" buttons

<sup>1)</sup> When connected to a 240V circuit.

<sup>1</sup> Hybrid components on Cayenne S E-Hybrid

The electric motor provides an additional boost. In coasting mode, the combustion engine is decoupled and switched off, allowing the Cayenne S E-Hybrid to glide for some distance under its own momentum—for a significant reduction in fuel consumption without any compromise in terms of sports performance.



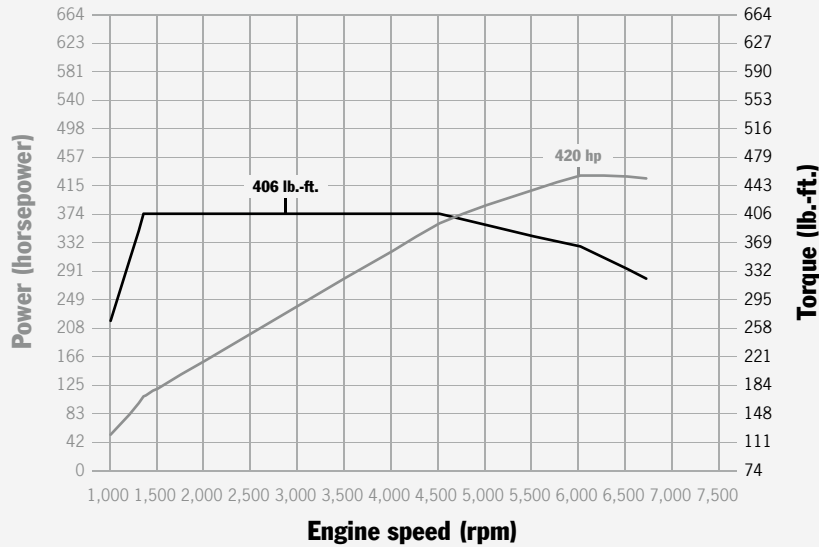
Cayenne S E-Hybrid (combined): 435 lb.-ft. between 1,250 and 4,000 rpm, 416 hp at 5,500 rpm



Model shown | Cayenne S in Moonlight Blue







Cayenne S: 406 lb.-ft. between 1,350 and 4,500 rpm, 420 hp at 6,000 rpm

## The drive system of the Cayenne S.

Performance and efficiency, well thought-out and brought to the road without compromise. The Cayenne S features a 3.6-liter twin-turbo V6 engine. The result: 20 horsepower more power than its predecessor with a further significant decrease in fuel consumption. This is thanks to the reduced displacement, in conjunction with the new twin-turbo design.

- 3.6-liter twin-turbo V6 engine
- 420 horsepower at 6,000 rpm
- Maximum torque: 406 lb.-ft. between 1,350 and 4,500 rpm
- Acceleration from 0 to 60 mph: 5.2 seconds (5.1 seconds<sup>1)</sup>)
- Top track speed: 161 mph
- Fuel consumption in MPG (EPA estimated):  
17 (city)  
24 (highway)  
20 (combined)
- Direct Fuel Injection (DFI)
- Integrated dry-sump lubrication
- VarioCam Plus
- Exhaust-gas turbocharging system and charge-air cooling
- Thermal management
- Auto Start Stop
- Active air flaps

<sup>1)</sup> In conjunction with Sport Chrono Package.



**The best day for living out your enthusiasm:  
every day.**

**The Cayenne.**

The Cayenne exudes one thing above all else: enthusiasm. For life, for the road.

A genuine all-rounder for any road and any terrain. Versatile, spacious, and dynamic. Designed for everyday challenges—especially those that are far from ordinary.

The basis for this: the 3.6-liter V6 gasoline engine. An impressive output of 300 horsepower at 6,300 rpm. With Direct Fuel Injection (DFI), continuously

variable valve timing on the inlet, and exhaust sides as well as 8-speed Tiptronic S fitted as standard, it's no wonder that we refer to it as the "decathlete" among sports cars.

The Cayenne: for the short sprint—and for the long distance. For excitement—and relaxation. And for everyday driving that is anything but ordinary.









## The Cayenne. A selection of standard equipment.

- 8-speed Tiptronic S with Auto Start Stop function
- 18-in. Cayenne wheels
- Tire Pressure Monitoring System (TPMS)
- Bi-Xenon™ headlights
- Daytime running lights with four LED spotlights per headlight unit
- Two-zone climate control
- Partial-leather interior
- Comfort seats with 8-way electric adjustment
- Rear seats with fore/aft and backrest angle adjustment
- Anti-theft alarm system with ultrasonic interior surveillance and immobilizer
- Cruise control
- Monochrome black interior package (high-gloss)
- Door sill guards in stainless steel with “Cayenne” logo (front)
- Multifunction sports steering wheel with gearshift paddles
- CDR audio system with 7-in. color touchscreen display
- Automatic tailgate

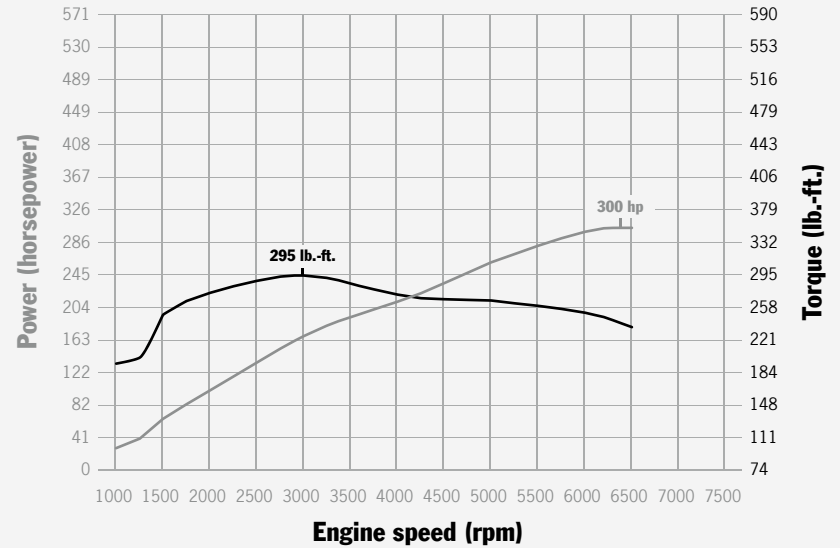
- 1 Door sill guards in stainless steel with ‘Cayenne’ logo (front)
- 2 CDR audio system with 7-inch color touchscreen display
- 3 Monochrome black interior package (high-gloss)

## The drive system of the Cayenne.

The Cayenne is at home on any road. Yet it is always willing to explore new territory. When it comes to dynamic driving, everyday practicality, or its range of standard equipment, it is a superb athlete capable of an impressive performance in virtually any discipline.

- 3.6-liter V6 engine (EU5)
- 300 horsepower at 6,300 rpm
- Maximum torque: 295 lb.-ft. at 3,000 rpm
- Acceleration from 0 to 60 mph: 7.3 seconds (7.2 seconds<sup>1)</sup>)
- Top track speed: 142 mph
- Fuel consumption in MPG (EPA estimated):
  - 19 (city)
  - 24 (highway)
  - 21 (combined)
- Direct fuel injection (DFI)
- SPORT button
- Thermal management
- VarioCam Plus
- Auto Start Stop and coasting function
- Active air flaps

<sup>1)</sup> In conjunction with Sport ChronoPackage (Performance Start).



Cayenne: 295 lb.-ft. at 3,000 rpm, 300 hp at 6,300 rpm





## Drive and chassis





Model shown | Cayenne S in Moonlight Blue



Model shown | Cayenne S in Moonlight Blue



## A drive system that sets one thing racing above all else: your heart.

### Transmission.

#### 8-speed Tiptronic S

Thanks to a particularly wide ratio spread, the 8-speed Tiptronic S lowers fuel consumption and increases comfort and dynamic agility. The low engine speeds in the higher gears reduce the noise level inside the vehicle. The 8-speed Tiptronic S shifts gear automatically and adapts to your individual driving style.

New features include the extended Auto Start Stop function. This cuts the engine not only when the vehicle stops, but also if you are approaching traffic lights, for example.

#### Coasting (Available on Cayenne S E-Hybrid only)

Other energy-saving technologies include the ability to coast along in certain situations, such as when you take your foot off the accelerator pedal to reduce your speed slowly.

#### Porsche Traction Management (PTM)

PTM comprises an active all-wheel drive system with an electronically variable, map-controlled multi-plate clutch, Automatic Brake Differential (ABD), and Anti-Slip Regulation (ASR).

The electronically controlled multi-plate clutch helps to ensure optimum distribution of force between the permanently driven rear-axle and the front-axle. The driving conditions are continuously monitored to enable the system to respond to a variety of situations. During cornering, the required level of engine torque is distributed to the front wheels to provide excellent lateral stability. The result: perfect distribution of drive torque at all times.

PTM on the Cayenne S E-Hybrid features a permanent all-wheel drive system with self-locking center differential. This provides a standard torque split of 60 percent to the rear and 40 percent to the front. If one of the wheels is about to lose grip, the self-locking center differential transmits the torque to the axle, offering the highest level of traction. Variable distribution of engine torque to the rear wheels also enhances steering precision and driving dynamics.

<sup>1</sup> Coasting mode

<sup>2</sup> Coasting (plug-in hybrid)

## A strong character is not so easily swayed.

### Chassis systems.

#### Steel-spring suspension<sup>1</sup>

The steel-spring suspension meets high-level requirements in terms of performance, driving pleasure, and off-road capability. Consistent lightweight construction ensures improved driving dynamics, greater fuel economy, and enhanced comfort. In addition, the suspension setup has been further optimized to deliver a clear result: greater comfort and sports performance. Typically Porsche.

#### Air suspension with Porsche Active Suspension Management (PASM)<sup>2</sup>

A constant vehicle position thanks to air suspension including self-leveling and

ride-height control with PASM. The ground clearance can be adjusted using the rocker switch on the center console. And to make it easier to load the car, you can also select Loading Level using a button in the luggage compartment.

PASM is an electronic damping control system that actively and continuously adjusts the damping force on each wheel, based on road conditions and driving style. By means of a button on the center console, you can select one of three modes: Comfort, Sport, or Sport Plus. Sensors record the body movements that accompany powerful acceleration, braking, and rapid cornering

on uneven road surfaces. The control unit evaluates the driving conditions and modifies the damping force on each wheel in accordance with the selected mode. The result is threefold: increased driving stability, more comfort, and improved performance.

#### Porsche Dynamic Chassis Control (PDCC)

PDCC is an active anti-roll system that anticipates and reduces lateral body movement when cornering. In addition, it minimizes lateral sway of the vehicle on rippled road surfaces.

#### Porsche Torque Vectoring Plus (PTV Plus)

PTV Plus is a system for enhancing driving dynamics and stability. Operating in conjunction with an electronically controlled rear differential lock, it works by varying the torque distribution to the rear wheels. Depending on the steering angle and steering speed, accelerator pedal position, yaw rate and vehicle speed, PTV Plus optimizes steering response and precision by selectively applying brake pressure to the left or right rear wheel.

Schematic representation:

- A High Level II: max. ground clearance 10.6 in., selectable at speeds of up to 18 mph.<sup>3</sup>
- B High Level I: max. ground clearance 9.4 in., selectable at speeds of up to 50 mph.<sup>3</sup>
- C Normal Level: max. ground clearance 8.3 in.<sup>3</sup>
- D Low Level I: max. ground clearance 7.4 in., automatically selected above 85 mph.<sup>3</sup>
- E Low Level II: max. ground clearance 7.0 in., automatically selected above 130 mph. (Not manually selectable.)<sup>3</sup>
- F Loading Level: max. ground clearance 6.2 in., only selectable when vehicle is stationary.<sup>3</sup>

- 1 Porsche Dynamic Chassis Control (PDCC)
  - 1.1 High-speed cornering without PDCC
  - 1.2 High-speed cornering with PDCC
- 2 Air suspension ride heights
- 3 Porsche Torque Vectoring Plus (PTV Plus)

<sup>1</sup> Standard on the Cayenne S and Cayenne S E-Hybrid.

<sup>2</sup> Standard on the Cayenne Turbo.

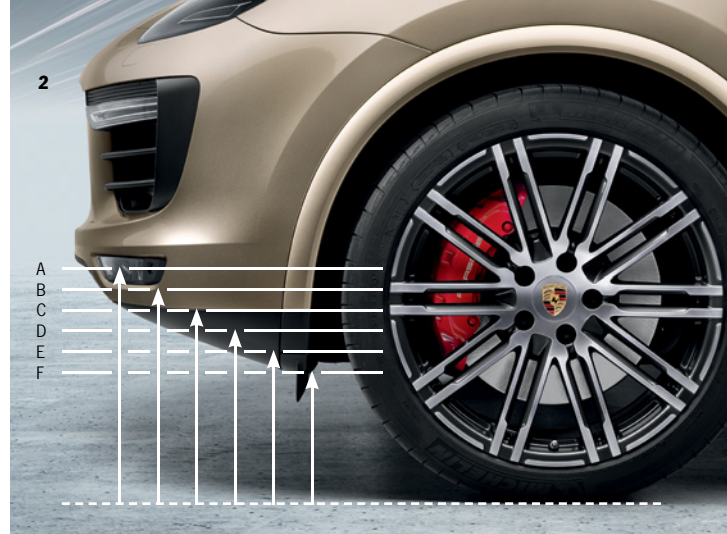
<sup>3</sup> The ride height on the Cayenne Turbo is 0.2 in. higher than on the other models.

Models shown (left to right) | Cayenne Turbo in Palladium Metallic, Cayenne S in Moonlight Blue

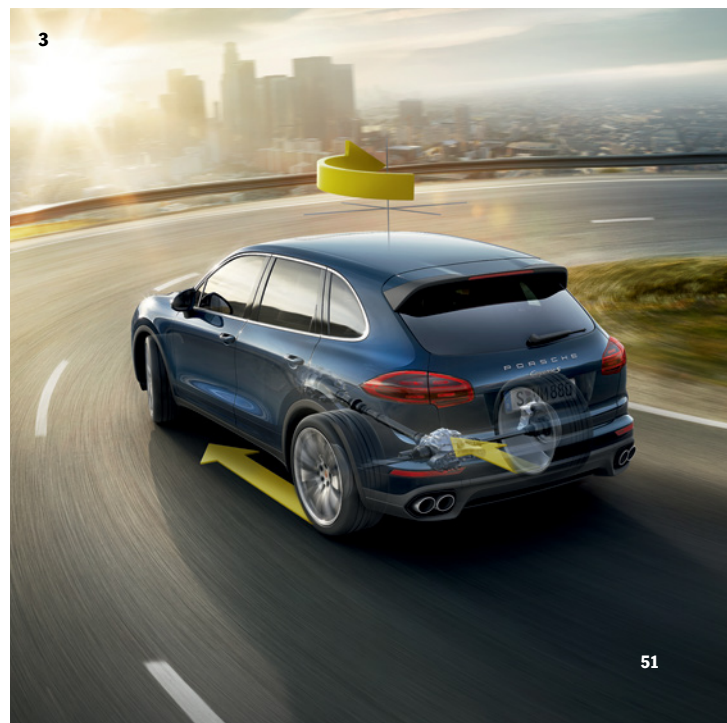
1



2



3



Model shown | Cayenne S in Moonlight Blue

1



2



3



**There's no need to rein in your enthusiasm.  
Even when you go off-road.**

## **Off-road capability and sports performance.**

### **Off-road capability**

Using the main off-road control on the center console, you can select one of up to three modes (depending on the model) for improving the off-road capability, or revert the setting to normal road driving. In Off-road Mode 1, the maps for all relevant systems, e.g., ABS, are adapted to provide optimum traction. In addition, High Level I is selected on vehicles featuring air suspension with PASM. The air suspension can also be raised further to High Level II to increase the approach/ departure angle and wading depth.

Off-road Mode 2<sup>1</sup> ensures even greater traction on difficult terrain by fully locking the multi-plate clutch. The electronically controlled variable rear differential on the optional Porsche Torque Vectoring Plus (PTV Plus)<sup>1</sup> is integrated within the all-wheel drive system and can be fully locked in Off-road Mode 3.

### **Porsche Stability Management (PSM)**

PSM helps to stabilize the vehicle in hazardous road scenarios. The electronic control system uses sensors to continuously monitor the direction, speed, yaw velocity, and lateral

acceleration of the car. It also enhances traction when accelerating on inconsistent road surfaces. In Sport Plus mode, as featured in the Sport Chrono Package, PSM is initiated later, affording a greater sense of freedom to the more dynamic driver.

### **Sport Chrono Package**

The Sport Chrono Package includes an analog and digital timer, the Sport Plus button, the longitudinal, and lateral acceleration display in the instrument cluster and a performance display in Porsche Communication Management (PCM). For an even sportier setup.

The Sport Plus button on the center console is used to activate Sport Plus mode. The engine becomes even more responsive. The damping is harder and the steering more direct. The Performance Start function ensures optimal acceleration when pulling away. The timer mounted on the dashboard displays the recorded driving time or can be used as a conventional clock. PSM also features a special performance display to view, store, and evaluate lap times or other driving times.

<sup>1</sup> Sport Chrono Package

<sup>2</sup> Porsche Stability Management (PSM)

<sup>3</sup> Off-road capability

<sup>1)</sup> Available on the Cayenne S and Cayenne Turbo.

Despite all this enthusiasm,  
sometimes it's important to stay grounded.

## Wheels.

### Wheel design

All Cayenne models feature a newly developed wheel design that accentuates their sporting style. Optional for all models, we offer a selection of wheels in a range of sizes up to 21 inches. These include the 21-inch 911 Turbo Design wheel with wheel arch extensions, which brings both performance and refinement to the road.

### Tire Pressure Monitoring System (TPMS)

TPMS provides a warning of any drop in pressure via the onboard computer display. In addition, the driver can quickly and easily check the individual pressures in all four wheels via the multipurpose display in the instrument cluster.

- 1 18-inch Cayenne wheel
- 2 18-inch Cayenne S wheel
- 3 19-inch Cayenne Turbo wheel
- 4 19-inch Cayenne Design II wheel

- 5 20-inch RS Spyder Design wheel
- 6 20-inch Cayenne SportDesign II wheel
- 7 21-inch 911 Turbo Design wheel
- 8 21-inch SportEdition wheel







## **Safety and environment**



Model shown | Cayenne S in Moonlight Blue



PORSCHE  
*Cayenne S*

D SVM 88

**Speed is a passion of ours.  
Even when it comes to deceleration.**

## Braking systems.

The braking systems on the Cayenne models offer impressive performance, even when fully laden and with a braked trailer load of up to 7,716 pounds.

### Porsche Ceramic Composite Brake (PCCB)

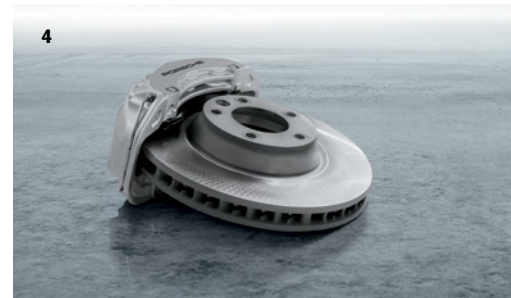
Derived from the world of motorsports to make everyday driving even safer: the Porsche Ceramic Composite Brake (PCCB) is proven on the racetrack and

therefore is an excellent example of the Porsche philosophy. The key advantage of PCCB is a total weight savings of approximately 50 percent compared with equivalent cast-iron discs. As well as enhancing performance and fuel economy, the unsprung and rotating masses are lightened. The results: better handling and road-holding plus greater ride comfort.

### Electric parking brake

Manually activated and deactivated, the electric parking brake releases automatically as you drive off.

- 1 Porsche Ceramic Composite Brake (PCCB). Cayenne S models: disc diameter (front/rear) 390 mm/370 mm  
On Cayenne Turbo: disc diameter (front/rear) 420 mm/370 mm
- 2 Brake rotor size on Cayenne Turbo: disc diameter (front/rear) 390 mm/358 mm
- 3 Brake rotor size on Cayenne S E-Hybrid: disc diameter (front/rear) 360 mm/330 mm
- 4 Brake rotor size on Cayenne S: disc diameter (front/rear) 360 mm/330 mm





**For us, sports performance is not just about speed.  
It's also about sustainability.**

## Environment.

### Environmental protection

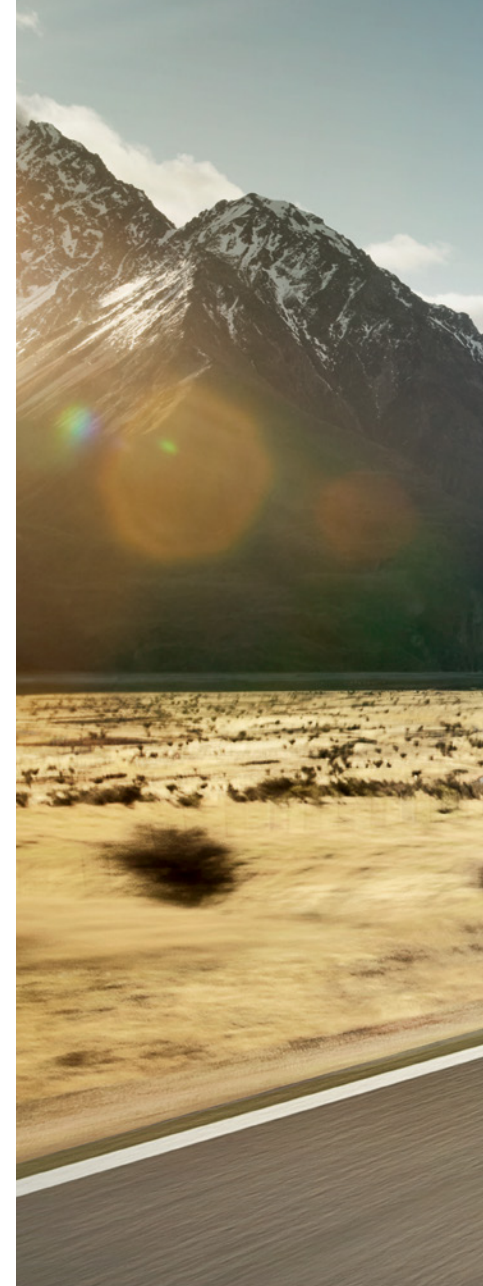
With the plug-in hybrid technology of the Cayenne S E-Hybrid, we are continuing to forge ahead into the future. Ecological responsibility is nothing new for Porsche, as can be seen from our efficient drive systems, lightweight construction, optimized aerodynamics, and low rolling resistance. We have demonstrated that even high-performance sports cars can achieve comparatively moderate exhaust emission values. This is ensured by our approach to environmental management in Weissach: here, all technological developments are carried out with

environmental protection in mind. This is demonstrated by the fact that around 70 percent of all Porsche cars ever built are still on the road.

### Lightweight construction and recycling

Intelligent lightweight construction has been integral to the Porsche identity since the very beginning. It is economical thanks to the high proportion of aluminum, plastics, and high-strength sheet steel used. This is substantially more stable and lighter than conventional steel. It is also ecological because all materials utilized are meticulously selected. We

use only innovative and environmentally friendly components. This also includes a reduction in the variety of plastics. Recycled plastics are used where they meet our technical requirements. As a result, the Cayenne models are around 95 percent recyclable today.





## Interior and comfort





**Shown** | Cayenne S E-Hybrid with Black Carbon Fiber interior package





## Driving with foresight. In the truest sense of the word.

### Lights and visibility.

#### LED headlights with Porsche Dynamic Light System (PDLS)

Excellent illumination of the road, thanks to the optimum balance between short- and long-distance lighting with side illumination. Due to the similarity in color to daylight and the low light scatter of the LED headlights with PDLS, the driver's eyes tire less quickly than with other systems.

#### Bi-Xenon™ headlights with Porsche Dynamic Light System (PDLS)

The Bi-Xenon™ headlights feature halogen auxiliary headlights and automatic dynamic range control, for more uniform illumination of the road in both low- and high-beam mode.

#### Porsche Dynamic Light System (PDLS)

PDLS adjusts the range of the low beam based on driving speed. The dynamic cornering light function swivels the headlights toward the inside of a corner based on the current steering angle and road speed. The static cornering lights activate the auxiliary headlights in order to illuminate more of the road in tight bends and turns.

#### Porsche Dynamic Light System Plus (PDLS Plus)

PDLS Plus offers High Beam Assistant, which is activated at speeds in excess of approx. 40 mph. It detects vehicles driving in front of it as well as oncoming traffic. The intensity and range of the

light cone can therefore be adapted to the prevailing situation.

#### Daytime running lights

The revised daytime running lights with four LED spotlights have been integrated into the standard Bi-Xenon™ headlights<sup>1</sup> and the optional LED headlights<sup>2</sup>. These make you more visible to other road users.

#### Taillights

LED technology is used for all functions on the newly designed rear light modules for an ultrafast response and greater luminance: in short, for greater visibility. The high-level third brake light is integrated into the roof spoiler.

<sup>1</sup> Porsche Dynamic Light System (PDLS) with static and dynamic cornering lights

<sup>2</sup> LED taillight (4-point brake light)

<sup>3</sup> LED headlight (4-point daytime running light)

<sup>1)</sup> Standard on the Cayenne S models.

<sup>2)</sup> Standard on the Cayenne Turbo.

## Adrenaline, excitement, exhilaration. And you don't have to leave your seat.

### Comfort.

#### Interior ambience

Quality materials, a variety of combinations, one heritage: Porsche. The palette of colors and finishes ranges from elegant to sporty, and includes a selection of fine woods, aluminum, and carbon fiber.

#### 8-way Comfort Seats

Offering excellent long-distance comfort and intuitive operation, the Comfort Seats feature 8-way electric adjustment including fore/aft, height and seat cushion/backrest angle settings.

#### Soft-close doors

Soft-close doors are available for all Cayenne models. A closing mechanism integrated in each door lock ensures comfortable and safe closing of all four doors.

#### Multifunction sports steering wheel with gearshift paddles

Motorsports. At your fingertips. In the truest sense of the word. The gearshift paddles enable fast, sporty, and ergonomic gear changes. There are also additional multifunction controls for telephone,

radio, and onboard computer functions. Derived from the 918 Spyder super sports car, the steering wheel also comes with optional heating. In addition to sporting appeal, it offers a high level of comfort.

#### 14-way Comfort Seats with comfort memory package

In addition to 8-way electric adjustment, these Comfort Seats feature a comfort memory package offering adjustment of the lumbar supports, seat cushion length, and steering column. It also stores individual seat settings, including lumbar

supports for both driver and front passenger as well as steering wheel and exterior mirror preferences.

#### 18-way Adaptive Sport Seats with comfort memory package

Taking comfort and sports performance to a whole new level, the Adaptive Sport Seats with comfort memory package feature higher, more contoured side bolsters that are electrically adjustable. Thanks to 18-way power adjustment, the settings can be adapted even more specifically to your individual requirements, e.g., by storing your steering wheel and exterior mirror preferences.

1 Multifunction sports steering wheel in Dark Walnut  
2 Comfort Seats  
3, 4 18-way Adaptive Sport Seats with comfort memory package





## Feeling perfectly at home. Even when you're on the move.

### Interior.

#### Rear seats

The best day for driving a sports car: every day. And this is made even more appealing by the space and versatility offered by the Cayenne. For added comfort, the seats are available with optional ventilation, even in the rear. The rear bench is based on the same design as the front comfort or sports seats and offers generous space for up to three adult passengers. For added practicality, the bench features fore/aft adjustment of 6.3 inch and a 40/20/40 split-folding facility. The flexible center section folds down to create a load-through facility for longer items such as the optional ski bag.

It also features a folding armrest. The process is quite simple: unlock and fold down. The rear seat backrest can be adjusted by up to 6 degrees: 3 degrees forward of the starting position and 3 degrees back.

#### Child seats

Offering comfort and safety for all passengers up to 12 years of age (or up to 79 pounds in weight), with high safety standards and a unique design. The child seats have been specially tested and approved in Porsche vehicles. For added safety, the Porsche Baby Seat and Porsche Junior Seat LATCH come with

their own five-point harness. For further information about child seats, please refer to the Cayenne Tequipment catalog.

#### Storage bins

Comfort also means having the important things at your fingertips when you need them. Which is why the Cayenne models offer a wide range of storage options. These include door storage bin with bottle holders, storage pockets on the front seat backrests, a glove bin cooled by the climate control system, a storage bin in the center console, and a handy drawer beneath both the driver's and front passenger's seat.

#### Comfort lighting package

This package includes dimmable ambient lighting in the door panels and roof console, practical LED reading lights for the rear passengers, exterior mirrors featuring additional courtesy lights on the driver's and front passenger's side, and a second 12-volt socket in the rear center console.

1 Rear seats with LATCH split-folding facility

2 Porsche Junior Seat LATCH

3 Storage options

4 Comfort lighting package

## What makes a good copilot?

You know they are there when you need them.

### Driver assistance systems.

#### Adaptive cruise control with Porsche Active Safe (PAS)

The system uses a radar sensor in the central air intake to monitor the road up to 650 ft. ahead. If you approach another vehicle that is traveling slower than your selected cruising speed, the system slows the engine or gently applies the brakes. This continues until the distance that you have preset is maintained. If heavier braking is required, the driver has to actively intervene. When the vehicle in front decelerates further, adaptive cruise control will continue to reduce your speed—even down to a halt. When the

road ahead is free once more, the car automatically returns to your chosen cruising speed greater than 19 mph. If selected by the driver, the integrated Stop & Go function automatically applies the brakes and then drives off again in congested traffic. The integrated Porsche Active Safe (PAS) visually and audibly warns the driver that intervention is necessary in the event of a sudden decrease in distance and briefly tugs on the brakes. It can also intervene in the braking process and apply increased braking pressure according to the situation through to all-out emergency braking, if required.

#### Lane Departure Warning

Lane Departure Warning uses a camera to detect lane markings on the road. Activated at speeds in excess of 40 mph, it issues an acoustic warning signal if the vehicle is threatening to stray outside the lane.

#### Lane Change Assist

Lane Change Assist monitors the area behind the vehicle and the blind spot using radar sensors. At speeds greater than 19 mph, the system alerts the driver of a vehicle in the blind spot or approaching quickly from behind via a visual signal from the exterior mirrors.

This enhances comfort, particularly when driving on the highway. However, Lane Change Assist does not actively intervene in the controlling of the vehicle and can be deactivated at any time.

#### Automatic hold function

With the automatic hold function, you can pull away on the flat or a slope without ever rolling back.

- 1 Adaptive cruise control with Porsche Active Safe (PAS)
- 2 Lane Change Assist
- 3 Lane Departure Warning





**You can never tire of looking at a Porsche.  
Or looking out of one.**

### Parking and maneuvering aids.

#### Surround View

Surround View supplements the reversing camera with three additional high-resolution cameras—one in the front fascia and one in each lower trim of the exterior mirrors. Based on the information supplied by all four cameras, the system generates a virtual bird's-eye view of the car and displays it on the PCM screen. This provides additional assistance to the driver when parking and maneuvering because even low-level obstacles at the front and side of the vehicle can be detected. It is also possible to switch between various camera views to improve visibility; for example, at narrow exits.

#### ParkAssist

This parking aid uses an acoustic signal and front/rear displays to alert the driver of any obstacles at the front or rear of the car. Its sensors are neatly concealed in the front and rear bumpers. The acoustic signal is supplemented by a visual warning in the center console display which provides a graphical representation of the vehicle's proximity to obstacles.







1



2

- 1 Porsche Communication Management (PCM) with navigation module
- 2 Universal audio interface

**A genuine alternative to the Porsche engine sound.  
And probably the only one.**

## **Audio and communication.**

### **Porsche Communication Management (PCM) with navigation module**

The standard central control system for all information and communication functions, PCM is powerful and versatile, yet easy to use. The high-resolution touchscreen display is operated via the graphic interface or by using the rotary push-button controls. The radio has an FM twin tuner with Radio Data System (RDS) frequency diversity, which continuously searches the airwaves for the best possible signal from the selected radio station. On the Cayenne S E-Hybrid, the touchscreen and instrument cluster also display hybrid-specific information, e.g., charge situation, charge status, and

performance. The CD/DVD drive plays CDs and audio DVDs and is MP3 compatible. The standard navigation module with high-speed hard drive offers a conventional 2-D layout as well as a perspective view. In some regions, the topography can also be displayed in 3-D. In addition, the system indicates the respective speed limit for the roads covered in the navigation database via PCM or the color display in the instrument cluster. In conjunction with the optional online services, online destinations can also be easily imported into the navigation system. PCM also features a universal audio interface with a USB port.

### **Burmester® High-End Surround Sound System**

Great driving experiences deserve great aural experiences. And that's exactly what you get from Burmester®. Based in Berlin, it is one of the most respected premium audio manufacturers worldwide. Available as an option on all Cayenne models, the Burmester® High-End Surround Sound System boasts state-of-the-art technology, uncompromising extravagance, and excellent craftsmanship. The system owes its eminence to countless details—and one overriding goal: perfection in sound.

Key features include a 16-channel amplifier with a total output of more than 1,000 watts, 16 loudspeakers (including an active subwoofer with a 300-watt

Class D amplifier), a total diaphragm area of more than 2,400 cm<sup>1</sup>, and a frequency range of 30 Hz to 20 kHz. Crossover technology has been carried over virtually unmodified from the company's high-end home audio systems. Analog and digital filters have been optimally defined for their specific location and finely tuned after extensive in-car audio testing. Ribbon tweeters are used for unmistakably fine, clear, and undistorted high-frequency sound reproduction with excellent level stability. All loudspeaker housings are perfectly matched and deliver superior bass foundation, definition, and impulse accuracy. The result is a natural and richly textured spatial sound, even at top volume.

The elegantly pure design with galvanized surrounds and Burmester® logos on selected loudspeakers make it clear that the appeal of this surround sound system is as much about the visual as it is the audio.

### **Bose® Surround Sound System**

Featuring 9 amplifier channels, 14 loudspeakers and a 200-watt active subwoofer, the system delivers a balanced acoustic pattern and a total output of 585 watts. Sources such as CDs and MP3s can be played, in a surround mode, at the push of a button. The result is a balanced, faithfully reproduced sound, and a captivating 360-degree aural experience delivered to all four seat positions.

### **HD Radio™ Receiver**

An optional HD Radio™ receiver provides access to a broad range of new digital programming. HD Radio™ also includes advanced audio and data features that enhance your listening experience.

### **SiriusXM® Satellite Radio Receiver<sup>2</sup>**

The SiriusXM® Satellite Radio receiver, available as an option for Cayenne models, provides over 130 channels coast to coast, including commercial-free music, plus the best sports, news, talk, comedy, and entertainment. The optional NavTraffic® service enables PCM to display continuously updated traffic information in over 130 markets. The optional NavWeather® service allows you to stay informed with driver-friendly weather information on the PCM screen.

<sup>1</sup> Reception subject to local digital network coverage.

<sup>2</sup> SiriusXM® Satellite Radio requires a subscription, sold separately after 3-month trial included with vehicle purchase or lease. If you decide to continue your SiriusXM® service at the end of your subscription, service will automatically renew and bill until you call SiriusXM® at 1-866-635-2349 to cancel. See SiriusXM® Customer Agreement for complete terms at [www.siriusxm.com](http://www.siriusxm.com). Satellite service available only to those 18 and older in the 48 contiguous United States and D.C. Sirius, XM, and all related marks and logos are trademarks of SiriusXM Satellite Radio Inc.

1 Bose® loudspeaker

2 Burmester® sound controls

3 Burmester® loudspeaker







## Also on the program in the Cayenne: the best entertainment.

### Infotainment.

#### Online services

The online services give you the option of accessing a variety of content from the internet via PCM. Data is transferred to PCM via a smartphone app (Aha Radio app). The app is available free of charge from iTunes® (for iPhones®) and Google Play™ (for Android® devices). Online services include web radio, news feeds, podcasts, audio magazines, and Facebook® as well as weather information. The results of an online Points of Interest (POI) search can be imported into PCM as a navigation

destination. To use the online services, you will need either the universal audio interface (for iPhones®) or the mobile phone preparation (for Android® devices).

#### Porsche Rear Seat Entertainment

Available as a factory-fitted option from Porsche Exclusive: Porsche Rear Seat Entertainment. The system comprises two display consoles, each with an integrated player and USB port, and two wireless infrared headphones. The display consoles are trimmed in matching interior leather with decorative

seams and are located on the front seat backrests. Each one contains a high-resolution, swivel-mounted 7-inch color touchscreen display. Boasting built-in anti-shock protection, the system is compatible with CDs and DVDs. It is also possible to connect two separate and individually selectable AV sources, such as a games console or digital camera. Designed to the highest standards of safety and ergonomics, Porsche Rear Seat Entertainment blends harmoniously within the passenger compartment.

1 Online services

2 Porsche Communication Management (PCM)

3 Porsche Rear Seat Entertainment

# Personalization



Model shown | Cayenne Turbo in Palladium Metallic



## Enthusiasm standard.

## Personalization.

Life is not black and white. That's why the Cayenne models come in a range of 12 exterior shades. In total, there's a

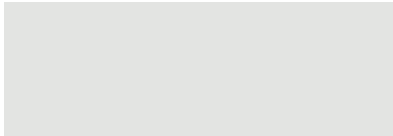
choice of two solid, eight metallic, and two special colors. You can also choose from five interior colors and six two-tone

combinations, as well as seven interior packages in aluminum, carbon fiber, or a selection of fine woods.

### Solid exterior colors



Black



White



### Metallic exterior colors



Jet Black Metallic



Meteor Grey Metallic



Rhodium Silver Metallic



Carrara White Metallic



Special exterior colors



Moonlight Blue Metallic



Peridot Metallic



Mahogany Metallic



Carmine Red



Umber Metallic



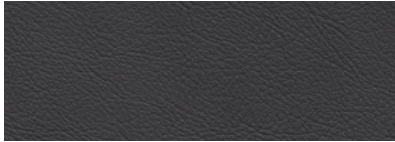
Palladium Metallic



**Standard interior colors**  
Dashboard/trim/seats



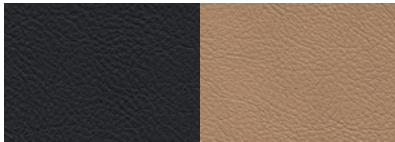
Black



Agate Grey

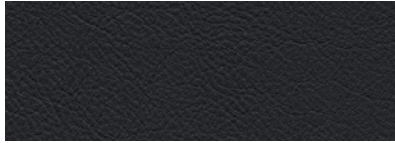


Luxor Beige



Black/Luxor Beige

**Standard interior colors:**  
leather interior/leather package  
Dashboard/trim/seats



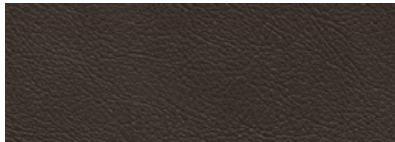
Black



Agate Grey



Luxor Beige



Saddle Brown

**Natural leather interior**  
Dashboard/trim/seats



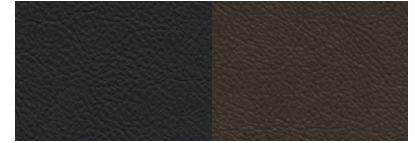
Espresso

**Two-tone combinations:**  
natural leather interior  
Dashboard/trim/seats



Espresso/Cognac  
(roof lining: Espresso, carpet<sup>1)</sup>: Cognac)

**Two-tone combinations:**  
leather interior/leather package  
Dashboard/trim/seats



Black/Saddle Brown  
(roof lining: Black, carpet<sup>1)</sup>: Saddle Brown)



Black/Garnet Red  
(roof lining: Black, carpet<sup>1)</sup>: Garnet Red)



Saddle Brown/Cream  
(roof lining: Saddle Brown, carpet<sup>1)</sup>: Cream)

<sup>1)</sup> Carpet in loadspace area and optional floor mats in darker color.

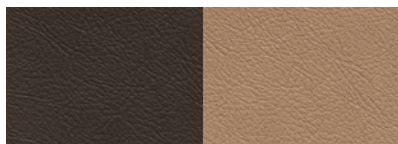
<sup>2)</sup> Color and grain may vary.

<sup>3)</sup> Also available on steering wheel.

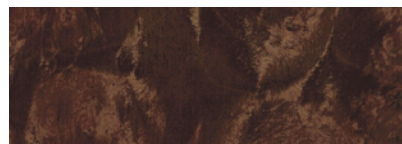
<sup>4)</sup> Also available on steering wheel from Porsche Exclusive.

Glass is reflective. Certain lighting conditions may cause a lighter color dashboard to produce a noticeable reflection on the inside of the windshield. To make certain that you are satisfied with your selection, ask your Porsche dealer to arrange a test drive experience in a variety of conditions, including with use of polarized sunglasses.

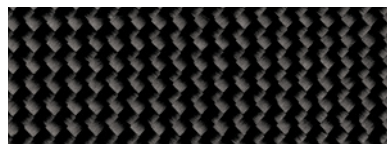
### Interior packages



Saddle Brown/Luxor Beige  
(roof lining: Saddle Brown, carpet<sup>1</sup>: Luxor Beige)



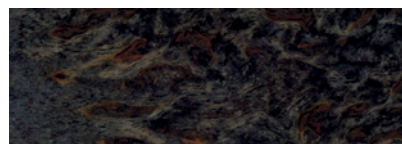
Dark Walnut<sup>2,3</sup>



Carbon Fiber



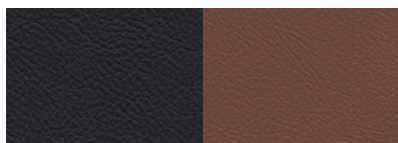
Black/Cream  
(roof lining: Black, carpet<sup>1</sup>: Black)



Anthracite Birch<sup>2,3</sup>



Brushed Aluminum



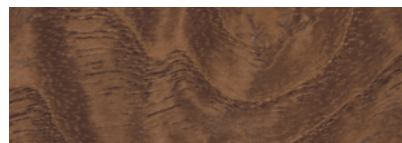
Black/Cohiba Brown  
(roof lining: Black, carpet<sup>1</sup>: Black)



Yachting Mahogany<sup>4</sup>



Monochrome Black (high gloss)



Natural Olive<sup>2</sup>

### GTS interior packages



Carmine Red



Rhodium Silver

## Available interior colors



Black



Saddle Brown



Agate Grey



Luxur Beige



Black/Luxur Beige



Espresso





Espresso/Cognac



Black/Saddle Brown



Black/Garnet Red



Saddle Brown/Luxor Beige



Saddle Brown/Cream



Black/Cream



Black/Cohiba Brown



GTS Carmine Red



GTS Rhodium Silver

**Recommended color combinations:  
exterior and interior**

**Standard interior/leather interior**

Exterior colors	Standard interior/leather interior			
	Black	Agate Grey	Luxor Beige	Saddle Brown
Black	<input checked="" type="checkbox"/>	<input type="checkbox"/>	<input checked="" type="checkbox"/>	<input checked="" type="checkbox"/>
White	<input checked="" type="checkbox"/>	<input checked="" type="checkbox"/>	<input type="checkbox"/>	<input type="checkbox"/>
Jet Black Metallic	<input checked="" type="checkbox"/>	<input checked="" type="checkbox"/>	<input checked="" type="checkbox"/>	<input checked="" type="checkbox"/>
Moonlight Blue Metallic	<input checked="" type="checkbox"/>	<input checked="" type="checkbox"/>	<input checked="" type="checkbox"/>	<input checked="" type="checkbox"/>
Umber Metallic	<input checked="" type="checkbox"/>	<input type="checkbox"/>	<input checked="" type="checkbox"/>	<input type="checkbox"/>
Mahogany Metallic	<input checked="" type="checkbox"/>	<input type="checkbox"/>	<input checked="" type="checkbox"/>	<input type="checkbox"/>
Palladium Metallic	<input checked="" type="checkbox"/>	<input checked="" type="checkbox"/>	<input checked="" type="checkbox"/>	<input checked="" type="checkbox"/>
Meteor Grey Metallic	<input checked="" type="checkbox"/>	<input type="checkbox"/>	<input checked="" type="checkbox"/>	<input type="checkbox"/>
Rhodium Silver Metallic	<input checked="" type="checkbox"/>	<input checked="" type="checkbox"/>	<input type="checkbox"/>	<input checked="" type="checkbox"/>
Carrara White Metallic	<input checked="" type="checkbox"/>	<input checked="" type="checkbox"/>	<input type="checkbox"/>	<input checked="" type="checkbox"/>
Peridot Metallic	<input checked="" type="checkbox"/>	<input checked="" type="checkbox"/>	<input type="checkbox"/>	<input type="checkbox"/>
Carmine Red	<input checked="" type="checkbox"/>	<input type="checkbox"/>	<input type="checkbox"/>	<input type="checkbox"/>
<b>Finishes</b>				
Dark Walnut <sup>1</sup>	<input checked="" type="checkbox"/>	<input type="checkbox"/>	<input checked="" type="checkbox"/>	<input checked="" type="checkbox"/>
Anthracite Birch <sup>1</sup>	<input checked="" type="checkbox"/>	<input type="checkbox"/>	<input type="checkbox"/>	<input type="checkbox"/>
Natural Olive <sup>1</sup>	<input checked="" type="checkbox"/>	<input type="checkbox"/>	<input checked="" type="checkbox"/>	<input type="checkbox"/>
Yachting Mahogany <sup>1</sup>	<input checked="" type="checkbox"/>	<input type="checkbox"/>	<input checked="" type="checkbox"/>	<input type="checkbox"/>
Carbon Fiber	<input checked="" type="checkbox"/>	<input checked="" type="checkbox"/>	<input type="checkbox"/>	<input type="checkbox"/>
Brushed Aluminum	<input checked="" type="checkbox"/>	<input checked="" type="checkbox"/>	<input type="checkbox"/>	<input checked="" type="checkbox"/>
Black (high-gloss)	<input checked="" type="checkbox"/>	<input checked="" type="checkbox"/>	<input checked="" type="checkbox"/>	<input checked="" type="checkbox"/>

Leather interior package in two-tone combination							Natural Leather interior	Natural Leather interior (two-tone)	Leather interior (GTS)	
Black/ Luxor Beige	Saddle Brown/ Cream	Black/ Saddle Brown	Saddle Brown/ Luxor Beige	Black/ Garnet Red	Black/ Cream	Black/ Cohiba Brown	Espresso	Espresso/ Cognac	Carmine Red	Rhodium Silver
●	●	●	●	●	●	●	●	●	●	●
○		○	○	●			●	●	●	
●	●	●	●	●	●		●	●	●	●
○	○		○		○		○			○
●	○		○		●		●			
●			○		●		●	○		
●	○	●	●		○		●	○		
●	○		○	●	●		●	○		
		●		●			●	○	○	●
○		○		●		○	●	○	●	
○					○				●	
○	●	●	●		●		●	●		
					●					
○	●	○					●	●		
○	○		○		●		●	●		
●	●	○	●	●	●	○	●	●	●	●
○		●		●		○	●	●	●	●
●	●	●	●	●	●	●	●	●	●	●

- Highly recommended color combination
- Recommended color combination

<sup>1)</sup> Color and grain may vary.

Glass is reflective. Certain lighting conditions may cause a lighter color dashboard to produce a noticeable reflection on the inside of the windshield. To make certain that you are satisfied with your selection, ask your Porsche dealer to arrange a test drive experience in a variety of conditions, including with use of polarized sunglasses.

## Option packages designed just for you.

The Porsche Option Packages: Our most popular options, grouped to offer you more Porsche, more efficiently than ever.

You've always been able to order any available Porsche option on an individual basis. And that hasn't changed. We also offer select options as part of a series of packages.

	Cayenne Turbo S	Cayenne Turbo	Cayenne GTS	Cayenne S E-Hybrid	Cayenne S	Cayenne
<b>Premium Package</b>						
Power Steering Plus	●	●	●	●	●	●
Moonroof	●	●	●	●	●	●
Bi-Xenon™ headlights with Porsche Dynamic Light System (PDLS)	●	●	●	○	○	●
Auto-dimming exterior and interior mirrors	●	●	●	○	○	●
Comfort lighting package	●	○	○	○	○	●
ParkAssist (front and rear) with reversing camera	●	○	○	○	○	●
14-way power seats (front) with memory package	●	●	○	○	○	●
Seat heating (front)	●	●	○	○	○	●
Seat ventilation (front)	●	○	○	○	○	●
Panoramic roof	●	○	○	○	○	○

	Cayenne Turbo S	Cayenne Turbo	Cayenne GTS	Cayenne S E-Hybrid	Cayenne S	Cayenne
<b>Premium Package Plus</b> Includes all of the Premium Package and adds—						
Seat heating (front and rear)	●	●	●	○	○	●
LED headlights with Porsche Dynamic Light System Plus (PDLS Plus)	●	○	●	○	○	●
Porsche Entry & Drive	●	○	●	○	○	●
Power sunshade for rear side windows	●	○	●	○	○	●
Lane Change Assist (LCA)	●	○	●	○	○	●

– not available   ○ extra-cost option   ● standard equipment   □ no-cost option  
For more information on the options featured in this catalog, please refer to the price list.

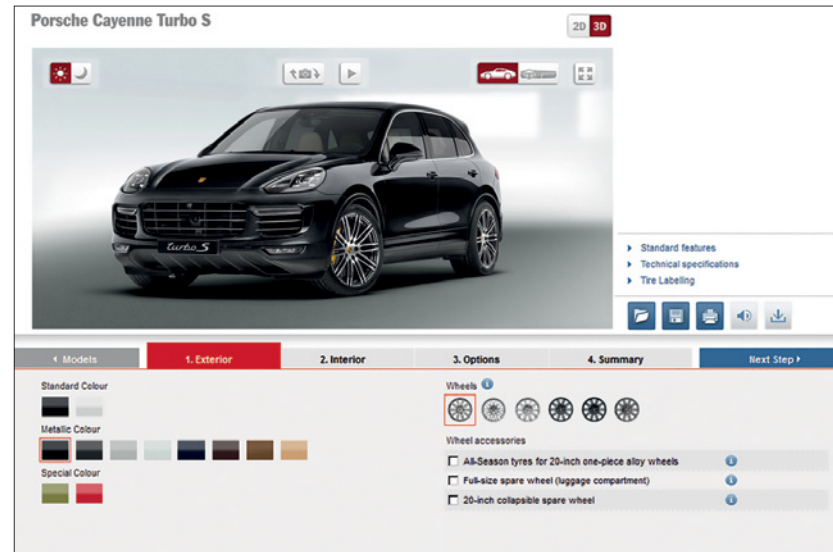
Our Option Packages make it easier to option out your Porsche in the most efficient manner and at a better cost to you, making it easier to build that Porsche you have always dreamed of.

	Cayenne Turbo S	Cayenne Turbo	Cayenne GTS	Cayenne S E-Hybrid	Cayenne S	Cayenne
<b>Infotainment Package</b>						
Bose® Surround Sound System	●	●	●	○	○	●
Online Services	●	●	●	○	○	●
SiriusXM® Satellite Radio receiver	●	●	●	○	○	●

Performance, elegance and pure luxury. You decide in which form your new Cayenne suits you best. You can use the Porsche Car Configurator to create a virtual image of your ideal vehicle. Four easy steps is all it takes to configure your very own, unique Porsche. The price will be automatically updated. The Car Configurator has high visual appeal,

as it shows all of the equipment in 3-D. This allows you to view your configuration from all angles before saving it and printing it out.

Visit [porscheusa.com](http://porscheusa.com) to access the Porsche Car Configurator and further details on the fascinating world of Porsche.





Sport Chrono Package



Porsche Active Suspension Management (PASM)



Sports exhaust system with sport tailpipes in black

Option	Cayenne Turbo S	Cayenne Turbo	Cayenne GTS	Cayenne S E-Hybrid	Cayenne S	Cayenne	I no.	Page
<b>Engine, transmission and chassis</b>								
Porsche Active Suspension Management (PASM)	●	●	●	●	○	○	1BZ	50, 92
Air suspension with self-leveling, ride-height control and (PASM)	●	●	○	○	○	○	1BK	50
Porsche Dynamic Chassis Control (PDCC)	●	○	○	–	○	○	0AW	50
Porsche Torque Vectoring Plus (PTV Plus)	●	○	○	–	○	○	1Y1	50
Power Steering Plus	●	●	○	●	●	○	1N3	
Sport Chrono Package	●	○	○	○	○	○	QR5	53, 92
Sport tailpipes/sport tailpipes in black <b>Exclusive</b>	□	○	–	○	○	○	OP3/OP6	105
Sport exhaust system with sport tailpipes/ sport tailpipe in black <b>Exclusive</b>	○	○	●	–	○	○	OP8/OP9	92
26.4 gal. extended range fuel tank	●	●	●	–	●	●	OM1	
21.1 gal. pressurized fuel tank	–	–	–	●	–	–		
PCCB disc diameter (front/rear): 390 mm/358 mm	–	○	○	○	○	○	PB3	58, 93
PCCB disc diameter (front/rear): 420 mm/370 mm	○	–	–	–	–	–	PB2	58, 93

– not available    ○ extra-cost option    ● standard equipment    □ no-cost option  
For more information on the options featured in this catalog, please refer to the price list.

Option	Cayenne Turbo S	Cayenne Turbo	Cayenne GTS	Cayenne S E-Hybrid	Cayenne S	Cayenne	I no.	Page
<b>Exterior</b>								
Metallic paint	●	●	○	○	○	○		82
Special colors	○	○	○	○	○	○		83
Stainless steel skid plates (front and rear)	○	○	—	○	○	○	2JX	93
Running boards	○	○	—	○	○	○	VR1	
Wheel arch extensions in exterior color	●	●	●	○	○	●	6GH	
Monochrome black exterior package (high gloss)	○	○	●	○	○	○	QJ4	
Roof rails/drip rails in aluminum	○	○	○	○	○	○	3S1	
Roof rails/drip rails in aluminum with black finish	○	○	—	○	○	○	3S5	
Trailer hitch without tow ball	○	○	○	—	○	○	1D6	



Porsche Ceramic Composite Brake (PCCB)



Stainless steel skid plate (front)



Stainless steel skid plate (rear)



21-in. SportEdition wheel



21-in. 911 Turbo Design wheel



Panoramic roof system

Option	Cayenne Turbo S	Cayenne Turbo	Cayenne GTS	Cayenne S E-Hybrid	Cayenne S	Cayenne	I no.	Page
<b>Wheels</b>								
18-in. Cayenne wheel	–	–	–	□	□	●	V98	54
18-in. Cayenne S wheel	–	–	–	□	□	●	V99	54
19-in. Cayenne Turbo wheel	–	●	□	○	○	○	U00	54
19-in. Cayenne Design II wheel	–	○	□	●	●	○	F09	54
20-in. RS Spyder Design wheel	□	○	●	○	○	○	CP5	54
20-in. Cayenne SportDesign II wheel	–	○	□	○	○	○	CN7	54
21-in. 911 Turbo Design wheel with wheel arch extensions	□	○	○	○	○	○	U01	54, 94
21-in. SportEdition wheel with wheel arch extensions	□	○	○	○	○	○	7K3	54, 94
Wheel spacers on rear-axle, 17 mm	–	○	–	○	○	○	ARA	
<b>Exclusive</b>								

– not available    ○ extra-cost option    ● standard equipment    □ no-cost option  
 For more information on the options featured in this catalog, please refer to the price list.



Option	Cayenne Turbo S	Cayenne Turbo	Cayenne GTS	Cayenne S E-Hybrid	Cayenne S	Cayenne	I no.	Page
<b>Exterior</b>								
Porsche Dynamic Light System (PDLS)	–	–	–	○	○	○	8JE	65
LED headlights with Porsche Dynamic Light System Plus (PDLS Plus)	●	○	○	○	○	○	8EX	65, 95
Automatically dimming interior and exterior mirrors	●	●	○	○	○	○	PA1/PA2	
Electric slide/tilt sunroof in glass	○	●	○	●	●	○	3FE	
Panoramic roof system	○	○	○	○	○	○	3FU	94
4-zone climate control	○	○	○	–	○	○	9AH	
Auxiliary climate control (cooling and heating)	–	–	–	○	–	–	7E7	35



LED headlights with Porsche Dynamic Light System Plus (PDLS Plus)



Power sunshade for rear side windows



Privacy glass



Adaptive Sport Seat



Seat heating and ventilation (front and rear)



14-way Comfort memory package

Option	Cayenne Turbo S	Cayenne Turbo	Cayenne GTS	Cayenne S E-Hybrid	Cayenne S	Cayenne	I no.	Page
<b>Interior</b>								
Driver memory package	–	–	○	●	●	○	3L4	
14-way comfort memory package <sup>1</sup>	□	□	○	○	○	○	PE5/Q2J	66, 96
18-way adaptive sports seats with comfort memory package <sup>2</sup>	●	●	○	○	○	○	PE6	66
Seat heating (front)	–	–	○	○	○	○	4A3	
Seat heating (front and rear)	●	●	○	○	○	○	4A4	96
Seat ventilation (front)	○	○	○	○	○	○	4D3	
Seat ventilation (front and rear)	○	○	○	–	○	○	4D1	69, 96
Side airbags (rear)	○	●	○	●	●	○		
LATCH system for child seats on front passenger seat	○	–	○	●	●	○	3B9	69
Fire extinguisher	○	○	○	○	○	○	6A7	

– not available   ○ extra-cost option   ● standard equipment   □ no-cost option  
 For more information on the options featured in this catalog, please refer to the price list.

<sup>1</sup> Includes electric adjustment of lumbar support, squab length and steering column, a comfort memory package (driver's side: seat, steering column, exterior mirror settings; front passenger's side: seat settings) and other additional functions.

<sup>2</sup> Includes electric adjustment of lumbar support, squab length, side cushions on backrest/squab and steering column (Cayenne Turbo: comfort memory package as no-cost option); comfort memory package (driver's side: seat, steering column, exterior mirror settings; front passenger's side: seat settings) and other additional functions.

<sup>3</sup> If no other specification is made when ordering, items will be painted in exterior color. Finishes also available in alternative exterior colors. Free choice from all standard and special colors (no-cost option).

Option	Cayenne Turbo S	Cayenne Turbo	Cayenne GTS	Cayenne S E-Hybrid	Cayenne S	Cayenne	I no.	Page
<b>Interior</b>								
ParkAssist (front and rear)	●	●	○	●	●	○	7X2	72
ParkAssist (front and rear) with reversing camera	○	○	○	○	○	○	7X8	72
ParkAssist (front and rear) with Surround View	○	○	○	○	○	○	8A4	72
Adaptive cruise control with Porsche Active Safe (PAS)	○	○	○	○	○	○	8T3	70
Lane Change Assist (LCA)	○	○	○	○	○	○	7Y1	70, 97
Lane Departure Warning (LDW)	○	○	○	○	○	○	7Y6	70, 97
HomeLink® System (garage-door opener)	○	●	○	●	●	○	VC1	
Porsche Entry & Drive System	○	○	○	○	○	○	4F2	
Soft-close doors	○	○	○	○	○	○	GZ2	66
Compass on dashboard	○	○	○	○	○	○	QR1	97
Monochrome Black interior package (high gloss)	□	□	□	●	●	●	5TL	43
Steering wheel heating	●	●	○	○	○	○	2ZH	
Smoker package	○	□	○	□	□	○	9JB	
Floor mats	●	●	○	●	●	○	0TD	98
Ski bag	○	○	○	○	○	○	3X1	
Interior package painted <sup>3</sup>	○	○	○	○	○	○	APC	
<b>Exclusive</b>								

Glass is reflective. Certain lighting conditions may cause a lighter color dashboard to produce a noticeable reflection on the inside of the windshield. To make certain that you are satisfied with your selection, ask your Porsche dealer to arrange a test drive experience in a variety of conditions, including with use of polarized sunglasses.



Lane Change Assist



Lane Departure Warning



Compass display in instrument cluster



Floor mats



Porsche Crest embossed on head restraints (front)



Roof lining in Alcantara®

Option	Cayenne Turbo S	Cayenne Turbo	Cayenne GTS	Cayenne S E-Hybrid	Cayenne S	Cayenne	I no.	Page
<b>Interior: leather</b>								
Smooth-finish leather interior	<input type="checkbox"/>	<input checked="" type="checkbox"/>	<input type="checkbox"/>	<input type="checkbox"/>	<input type="checkbox"/>	<input type="checkbox"/>		84
Two-tone combination leather interior	<input checked="" type="checkbox"/>	<input type="checkbox"/>	<input type="checkbox"/>	<input type="checkbox"/>	<input type="checkbox"/>	<input type="checkbox"/>		84
Natural leather interior	<input type="checkbox"/>	<input type="checkbox"/>	<input type="checkbox"/>	<input type="checkbox"/>	<input type="checkbox"/>	<input type="checkbox"/>		84
Extended interior package in leather <b>Exclusive</b>	<input type="checkbox"/>	<input type="checkbox"/>	<input type="checkbox"/>	<input type="checkbox"/>	<input type="checkbox"/>	<input type="checkbox"/>	APB	104
Extended interior package in leather, dashboard <b>Exclusive</b>	<input type="checkbox"/>	<input type="checkbox"/>	<input type="checkbox"/>	<input type="checkbox"/>	<input type="checkbox"/>	<input type="checkbox"/>	AZW	104
Steering column casing in leather <b>Exclusive</b>	<input type="checkbox"/>	<input type="checkbox"/>	<input type="checkbox"/>	<input type="checkbox"/>	<input type="checkbox"/>	<input type="checkbox"/>	ALL	
Door release lever surrounds and ashtray in leather <b>Exclusive</b>	<input type="checkbox"/>	<input type="checkbox"/>	<input type="checkbox"/>	<input type="checkbox"/>	<input type="checkbox"/>	<input type="checkbox"/>	ALT	
Porsche Crest embossed on head restraints (front and outer rear seats) <b>Exclusive</b>	<input checked="" type="checkbox"/>	<input type="checkbox"/>	<input type="checkbox"/>	<input type="checkbox"/>	<input type="checkbox"/>	<input type="checkbox"/>	5ZF	98
Seat console in leather <b>Exclusive</b>	<input type="checkbox"/>	<input type="checkbox"/>	<input type="checkbox"/>	<input type="checkbox"/>	<input type="checkbox"/>	<input type="checkbox"/>	ALS	
Roof lining in Alcantara®	<input checked="" type="checkbox"/>	<input checked="" type="checkbox"/>	<input checked="" type="checkbox"/>	<input type="checkbox"/>	<input type="checkbox"/>	<input type="checkbox"/>	6NN	98

– not available     extra-cost option     standard equipment     no-cost option  
For more information on the options featured in this catalog, please refer to the price list.

Option	Cayenne Turbo S	Cayenne Turbo	Cayenne GTS	Cayenne S E-Hybrid	Cayenne S	Cayenne	I no.	Page
<b>Interior packages</b>								
Heated multifunction sport steering wheel in Dark Walnut/ Anthracite Birch <sup>1</sup>	<input type="radio"/>	<input type="radio"/>	<input type="radio"/>	<input type="radio"/>	<input type="radio"/>	<input type="radio"/>	1XG	
Dark Walnut <sup>1</sup> interior package	<input type="checkbox"/>	<input type="radio"/>	<input type="checkbox"/>	<input type="radio"/>	<input type="radio"/>	<input type="radio"/>	5MP/PH9	85
Anthracite Birch <sup>1</sup> interior package	<input type="checkbox"/>	<input type="radio"/>	<input type="checkbox"/>	<input type="radio"/>	<input type="radio"/>	<input type="radio"/>	5MB/PH6	85
Natural Olive <sup>1</sup> interior package	<input type="checkbox"/>	<input type="radio"/>	<input type="radio"/>	<input type="radio"/>	<input type="radio"/>	<input type="radio"/>	5TF/PH5	85, 99
Yachting Mahogany <sup>1</sup> interior package	<input type="radio"/>	<input type="radio"/>	<input type="radio"/>	<input type="radio"/>	<input type="radio"/>	<input type="radio"/>	5ML/PH8	85
<b>Exclusive</b>								
Carbon Fiber interior package	<input checked="" type="radio"/>	<input type="radio"/>	<input type="radio"/>	<input type="radio"/>	<input type="radio"/>	<input type="radio"/>	5MH/PH7	85, 99
Heated multifunction sports steering wheel in Carbon Fiber	<input type="radio"/>	<input type="radio"/>	<input type="radio"/>	<input type="radio"/>	<input type="radio"/>	<input type="radio"/>	2FX	
Brushed Aluminum interior package	<input type="checkbox"/>	<input checked="" type="radio"/>	<input checked="" type="radio"/>	<input type="radio"/>	<input type="radio"/>	<input type="radio"/>	5TE	85, 99
Door sill guards in Stainless Steel, illuminated <sup>2,3</sup>	<input type="radio"/>	<input type="radio"/>	<input type="radio"/>	<input type="radio"/>	<input type="radio"/>	<input type="radio"/>	7M7	
<b>Exclusive</b>								



Natural Olive<sup>1</sup> interior package



Carbon Fiber interior package



Brushed Aluminum interior package

<sup>1</sup> Color and grain may vary.

<sup>2</sup> "Cayenne S" for Cayenne S and Cayenne S E-Hybrid and "Cayenne turbo" for Cayenne Turbo.

<sup>3</sup> On the Cayenne S E-Hybrid, the "Cayenne S" logo is illuminated in Acid Green.



CD/DVD autochanger (6-disc)



Burmester® High-End Surround Sound System



BOSE® Surround Sound System

Option	Cayenne Turbo S	Cayenne Turbo	Cayenne GTS	Cayenne S E-Hybrid	Cayenne S	Cayenne	I no.	Page
<b>Audio and communication</b>								
Porsche Communication Management (PCM) with navigation module <sup>1</sup>	●	●	○	●	●	○	7T1	15, 75
Bose® Surround Sound System <sup>2</sup>	●	●	○	○	○	○	9VL	76, 100
Burmester® High-End Surround Sound System <sup>2</sup>	○	○	○	○	○	○	9VJ	76, 100
6-disc CD/DVD changer	○	○	○	○	○	○	7D7	100
Telephone module <sup>3,4</sup>	○	○	○	○	○	○	9W1	
Telephone module with Bluetooth® keypad handset <sup>3,4</sup>	○	○	○	○	○	○	9ZP	
Mobile phone preparation <sup>3,4</sup>	○	●	○	●	●	○	9W5	79
Porsche Rear Seat Entertainment	○	○	○	○	○	○	AEC	
<b>Exclusive</b>								
Sirius XM® Satellite Radio receiver	●	●	●	○	○	●	QV8	

<sup>1</sup> May be incompatible with some copy-protected CDs.

<sup>2</sup> Reduced luggage compartment volume due to subwoofer beneath loadspace floor.

Cayenne S E-Hybrid: no storage compartment bin on left-hand side of luggage compartment.

<sup>3</sup> For information on compatible mobile phones, please visit [www.porsche.com](http://www.porsche.com) or contact your Porsche Center.

<sup>4</sup> Using a mobile phone inside the vehicle via Bluetooth® Hands-Free Profile (HFP) connection (mobile phone preparation or telephone module in HFP mode) may expose occupants to increased levels of electromagnetic radiation. The use of the telephone module for PCM via Bluetooth® SIM Access Profile (SAP) connection or with inserted SIM card helps to prevent exposure to this radiation as only the car's external aerial is used.

Option	Cayenne Turbo S	Cayenne Turbo	Cayenne GTS	Cayenne S E-Hybrid	Cayenne S	Cayenne	I no.	Page
<b>Audio and communication</b>								
Electronic logbook	○	○	○	○	○	○	9NY	
Porsche Car Connect <sup>5</sup>	○	○	○	● <sup>5</sup>	○	○	7G9	35
Online services <sup>3,6,7</sup>	○	○	○	○	○	○	UN1	79
<b>E-mobility</b>								
Porsche universal charger (AC)	–	–	–	●	–	–		32, 101
7.2-kW onboard charger	–	–	–	○	–	–	KB2	32
Adapter cable	–	–	–	□	–	–	73G/73H/ 73J	
<b>Luggage compartment bin and storage</b>								
Loadspace management system	○	○	○	○	○	○	3GN	101

– not available   ○ extra-cost option   ● standard equipment   □ no-cost option  
 For more information on the options featured in this catalog, please refer to the price list.

<sup>5</sup> Services are included for a certain period (E-Mobility Services: 5 years, Remote Services and PVTs Services: 6 months) and can then be extended for an annual charge.

<sup>6</sup> Use of online services with the optional telephone module requires activation of HFP mode in PCM.

<sup>7</sup> Online services may vary in scope and content. Availability subject to mobile phone network coverage and only in conjunction with mobile phone plans that allow data traffic. Usage incurs additional costs (charges and billing dependent on user's mobile phone contract; mobile phone contract with inclusive data allowance recommended due to high data volume).



Porsche universal charger (AC) with opt. charging dock



Porsche universal charger (AC)



Loadspace management system

## European Delivery.

The first time you drive your new Porsche is always a very special moment. Why not make it even more enjoyable with Porsche European Delivery? You can collect your Porsche in Stuttgart-Zuffenhausen or in Leipzig, before taking it where it rightly belongs: out on the road.

Beforehand, we invite you to take a glimpse behind the scenes on a tour of our production facilities. Witness the precision engineering and attention to detail that goes into making a Porsche.

Relax over lunch and take the opportunity to review your impressions so far. The ultimate highlight is still to come: the delivery of your Porsche. Our experts will be happy to take the time to explain to you the finer details about your car.

All that remains is for you to decide where you wish to take delivery of your new Cayenne. Stuttgart-Zuffenhausen is a location steeped in tradition and history. You will find traces of Porsche wherever you go—and what better way

to experience it up close than with a visit to the Porsche Museum. Exhibits include legendary models from more than 60 years of sports car engineering.

If you wish to collect your vehicle in more dynamic style, then opt for our production facility in Leipzig. We invite you to enjoy your first driving experience on site. Take a test drive in a Porsche model comparable to the one you purchased with an experienced instructor at your side—on our

FIA-certified on-road circuit or our dedicated off-road track.

Once you have chosen your location, simply arrange a collection date with your authorized Porsche dealer. We will be happy to help you with your travel arrangements and provide you with further details of any formalities and country-specific regulations.



Porsche Museum in Stuttgart-Zuffenhausen



On-road circuit at Porsche Leipzig





## Porsche Exclusive.

### As personal as it gets.

Over and above the personalization options featured in this catalog, you can now make your Porsche even more special with Porsche Exclusive. Have your vehicle individually and exclusively tailored to your wishes, even before it leaves the factory.

Aesthetically and technically, inside and outside, using fine materials and with customary Porsche quality. Our overriding principle? Making sure that your car is uniquely handcrafted to your taste. You will find a wide range of design options in the separate Porsche Exclusive Cayenne catalog.

Your authorized Porsche dealer will be happy to answer any questions about Porsche Exclusive that you may have. Please note that delivery times may be extended for certain items of Porsche Exclusive equipment.

For the truly personal touch, contact our Porsche Exclusive Personal Design Specialists at [personaldesign@porsche.us](mailto:personaldesign@porsche.us) or log onto [www.porscheusa.com](http://www.porscheusa.com) to find out more.

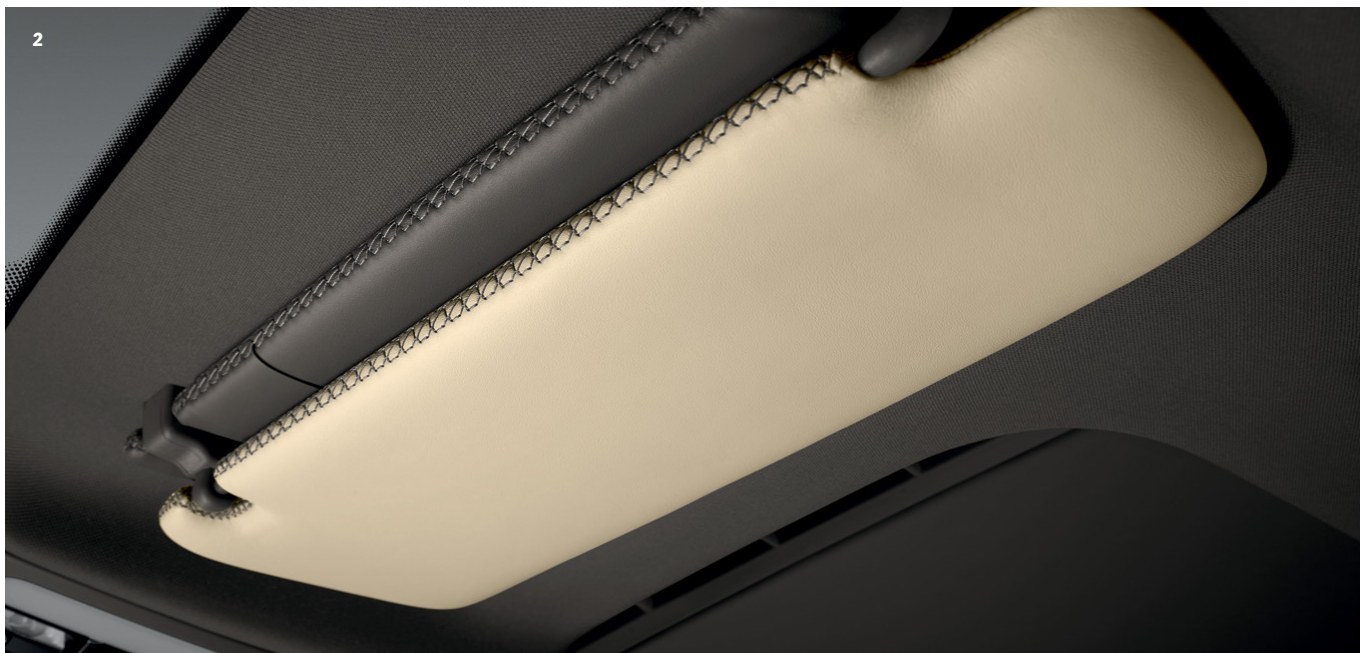
## Porsche Exclusive. A selection.

### 1 Extended interior package in leather

Selected materials and stylish design blend harmoniously: customize the interior to suit your individual requirements. With the extended interior package in leather, for instance.

### 2 Sun visors in leather

Visually appealing, yet also practical; the sun visors. With the two-tone leather interior package, the front of the visors is in the lighter shade and the mirrored side and second sun visor is in the darker leather color. Naturally, you can also choose to have the sun visor in your own favorite color combination, including all standard and natural leather interior colors, as well as all available optional colors.





3



5

**3 Bi-Xenon™ headlights in black with Porsche Dynamic Light System (PDLS)**

The inner components of the Bi-Xenon™ headlights featuring projector-beam technology are partly finished in black for a striking appearance.

**4 Sport tailpipes**

Twin dual-tube tailpipes with a distinctive design in high-gloss aluminum finish for even sportier appeal.



4



6

**5 Vehicle key painted**

A special kind of door opener—thanks to its painted side faces, even your vehicle key is an eye-catcher.

**6 21-inch Cayenne SportEdition wheel painted with wheel arch extensions**

As imposing as they are sporty, these one-piece multi-spoke alloy wheels for your Cayenne are finished in the exterior color.

## Panorama



### Porsche European Delivery

Imagine touring the original factory and then being handed the keys for an even more gratifying opportunity—touring Europe in your brand new Porsche. What happens next is up to you. Contact your authorized Porsche dealer for more information.



### Porsche Exclusive\*

Realize your vision of the perfect Porsche with our factory customization program. From styling enhancements to performance upgrades, all modifications are uniquely handcrafted for your Porsche. Please visit [www.porscheusa.com/exclusive](http://www.porscheusa.com/exclusive) for more information.



### Porsche Tequipment\*

Personalize your Porsche at any time after purchase with our range of aftermarket accessories. You will also find all our available products online at [www.porscheusa.com/tequipment](http://www.porscheusa.com/tequipment).

## Introducing The Porsche Experience Center Atlanta\*

Since the beginning, Porsche has been devoted to delivering the most exceptional experiences in the world. The new Porsche Experience Center in Atlanta offers a complete immersion into the Porsche experience. Visit [www.porschedriving.com](http://www.porschedriving.com) or call 1-800-Porsche to learn more.



### Porsche Assistance

Enjoy peace of mind with our exclusive breakdown and accident recovery service. Membership is free when you buy a new Porsche.

### Porsche Approved Certified Pre-Owned

Only the best Porsche cars earn the right to be called “Certified”. A meticulous 111-point inspection, a 2-year or 50,000-mile Limited Warranty, and 24-hour Roadside Assistance make this program one-of-a-kind. Contact your authorized Porsche dealer for details.

### Porsche Financial Services

Our range of financial services is innovative and specially tailored to the needs of Porsche owners. Ask your certified Porsche sales consultant for details or contact 1-800-Porsche to learn more.



**Porsche Driver's Selection\***

With products ranging from fashion and accessories to tailored luggage, this unique collection combines quality and style with everyday practicality. Visit your authorized Porsche dealer or shop online at [www.porscheusa.com/shop](http://www.porscheusa.com/shop).



**Porsche Travel Club**

Embark on a thrilling adventure and feel the power of Porsche. Stay in top-class hotels and dine in five-star restaurants worldwide. Visit [www.porschedriving.com](http://www.porschedriving.com) for more information.



**Porsche Sport Driving School**

Develop your skill and explore your Porsche with the Porsche Sport Driving School. Learn about events at some of the world's most famous racing venues at [www.porschedriving.com](http://www.porschedriving.com).



**Porsche Clubs**

Since the first Porsche Club was founded in 1952, their number has grown to 651, with a total of 186,000 members worldwide. To find out more, go to [www.porscheusa.com/porscheclub](http://www.porscheusa.com/porscheclub).

**Christophorus**

Our bimonthly magazine for Porsche owners has news, interviews, and a wide variety of features from throughout the world of Porsche.



**Porsche Classic**

Your specialized source for genuine Porsche parts as well as restoration services for all Porsche classics. Visit [www.porscheusa.com/classic](http://www.porscheusa.com/classic) to find out more.



**Porsche Museum**

More than 80 vehicles at our headquarters in Stuttgart-Zuffenhausen await to take you on a journey through Porsche history. See icons such as the 356, 911 and 917 presented in an atmosphere you can't experience anywhere else.



**Porsche Online**

Go to [www.porscheusa.com](http://www.porscheusa.com) for all the latest news and information from Porsche.

Follow us on:   



\*You can obtain the latest brochures for Porsche Exclusive, Porsche Tequipment, Porsche Driver's Selection and Porsche Driving Experience from your authorized Porsche dealer.

## Technical data

	2016 Cayenne Turbo S	2016 Cayenne Turbo	2016 Cayenne GTS	2016 Cayenne S E-Hybrid
<b>Engine/electric machine</b>				
Cylinders	V8	V8	V6	V6
Displacement	4.8 liters	4.8 liters	3.6 liters	3.0 liters
Max. power (DIN) at rpm	570 horsepower at 6,000 rpm	520 horsepower at 6,000 rpm	440 horsepower at 6,000 rpm	333 horsepower between 5,500 and 6,500 rpm
Max. torque at rpm	590 lb.-ft. between 2,500 and 4,000 rpm	553 lb.-ft. between 2,250 and 4,000 rpm	442 lb.-ft. between 1,600 and 5,000 rpm	325 lb.-ft. between 3,000 and 5,250 rpm
Compression ratio	10.5 : 1	10.5 : 1	10.5 : 1	10.5 : 1
Max. power (electric motor) at rpm	–	–	–	95 horsepower between 2,200 and 2,600 rpm
Max. torque (electric motor) at rpm	–	–	–	229 lb.-ft. at < 1,700 rpm
Max. power (parallel full hybrid) at rpm	–	–	–	416 horsepower at 5,500 rpm
Max. torque (parallel full hybrid) at rpm	–	–	–	435 lb.-ft. between 1,250 and 4,000 rpm
<b>Transmission</b>				
Layout	Porsche Traction Management (PTM): active all-wheel drive with electronically variable, map-controlled multi-plate clutch, Automatic Brake Differential (ABD) and Anti-Slip Regulation (ASR)	Porsche Traction Management (PTM): active all-wheel drive with electronically variable, map-controlled multi-plate clutch, Automatic Brake Differential (ABD) and Anti-Slip Regulation (ASR)	Porsche Traction Management (PTM): active all-wheel drive with electronically variable, map-controlled multi-plate clutch, Automatic Brake Differential (ABD) and Anti-Slip Regulation (ASR)	Porsche Traction Management (PTM): permanent all-wheel drive with self-locking center differential, Automatic Brake Differential (ABD) and Anti-Slip Regulation (ASR)
Lockable differentials (standard)	Electronically controlled multi-plate clutch, variable inter-axle lock	Electronically controlled multi-plate clutch, variable center lock	Electronically controlled multi-plate clutch, variable inter-axle lock	Self-locking center differential
8-speed Tiptronic S	Standard	Standard	Standard	Standard

All information regarding features, design, performance, dimensions, weight, fuel consumption, and running costs is correct at the time of print. Porsche reserves the right to alter specifications and other product information without prior notice.

2016 Cayenne S	2016 Cayenne
V6	V6
3.6 liters	3.6 liters
420 horsepower at 6,000 rpm	300 horsepower at 6,300 rpm
406 lb.-ft. between 1,350 and 4,500 rpm	295 lb.-ft. at 3,000 rpm
10.5 : 1	11.65 : 1
-	-
-	-
-	-
-	-
Porsche Traction Management (PTM): active all-wheel drive with electronically variable, map-controlled multi-plate clutch, Automatic Brake Differential (ABD) and Anti-Slip Regulation (ASR)	Porsche Traction Management (PTM): active all-wheel drive with electronically variable, map-controlled multi-plate clutch, Automatic Brake Differential (ABD) and Anti-Slip Regulation (ASR)
Electronically controlled multi-plate clutch, variable center lock	Electronically controlled multi-plate clutch, variable inter-axle lock
Standard	Standard



4.8-liter twin-turbo V8 engine

## Technical data

	2016 Cayenne Turbo S	2016 Cayenne Turbo	2016 Cayenne GTS	2016 Cayenne S E-Hybrid
<b>Chassis</b>				
Front-axle	Extra-large format double wishbone suspension, fully independent	Aluminum double wishbone suspension, fully independent	Extra-large format double wishbone suspension, fully independent	Aluminum double wishbone suspension, fully independent
Rear-axle	Multi-link suspension, fully independent	Multi-link suspension, fully independent	Multi-link suspension, fully independent	Multi-link suspension, fully independent
Steering	Power-assisted, hydraulic	Power-assisted, hydraulic	Power-assisted, hydraulic	Power-assisted, electrohydraulic
Brakes	10-piston monobloc aluminum fixed brake calipers at the front, 4-piston units at the rear, carbon/ceramic composite brake discs, internally vented and cross-drilled	6-piston monobloc aluminum fixed brake calipers at the front, 4-piston units at the rear, brake discs internally vented	6-piston monobloc aluminum fixed brake calipers at the front, 4-piston units at the rear, brake discs internally vented	10-piston monobloc aluminum fixed brake calipers at the front, 4-piston units at the rear, brake discs internally vented
Wheels	10.0 J x 21 in.	8.5 J x 19 in.	9.5 J x 20 in.	8.5 J x 19 in.
Tires	295/35 R21	265/50 R19	275/45 R20	265/50 R19
<b>Weight</b>				
Curb weight (min/max)	4,817/5,478 lbs.	4,817/5,467 lbs.	4,625/5,540 lbs.	5,181/5,809 lbs.
Gross weight	6,393 lbs.	6,382 lbs.	6,316 lbs.	6,724 lbs.
Towing load (unbraked/braked)	1,653/7,716 lbs.	1,653/7,716 lbs.	1,653/7,716 lbs.	–
<b>Performance</b>				
Top track speed	176 mph	173 mph	163 mph	151 mph (all-electric: 78 mph)
0-60 mph	3.8 secs	4.2 (4.1 <sup>1)</sup> secs	4.9 (4.8 <sup>1)</sup> secs	5.4 secs

<sup>1)</sup> With Sport Chrono Package (Performance Start).

All information regarding features, design, performance, dimensions, weight, fuel consumption and running costs is correct at the time of going to print. Porsche reserves the right to alter specifications and other product information without prior notice.



2016 Cayenne S	2016 Cayenne
Aluminum double wishbone suspension, fully independent	Extra-large format double wishbone suspension, fully independent
Multi-link suspension, fully independent	Multi-link suspension, fully independent
Power-assisted, hydraulic	Power-assisted, hydraulic
6-piston monobloc aluminum fixed brake calipers at the front, 4-piston units at the rear, brake discs internally vented	6-piston monobloc aluminum fixed brake calipers at the front, 4-piston units at the rear, brake discs internally vented
8.5 J x 19 in. 265/50 R19	8.0 J x 18 in. 255/55 R18
4,597/5,390 lbs. 6,305 lbs.	4,497/5,280 lbs. 6,195 lbs.
1,653/7,716 lbs.	1,653/7,716 lbs.
161 mph	142 mph
5.2 (5.1 <sup>1</sup> ) secs	7.3 (7.2 <sup>1</sup> ) secs



Drivetrain of the Cayenne S E-Hybrid

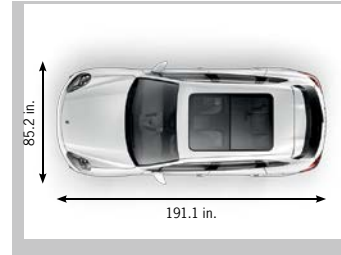
## Technical data

	2016 Cayenne Turbo S	2016 Cayenne Turbo	2016 Cayenne GTS	2016 Cayenne S E-Hybrid
<b>Estimated EPA fuel economy</b>				
Fuel grade	Premium	Premium	Premium	Premium
City	14	19	16	21
Highway	21	24	23	24
Combined	17	21	19	22
Electricity consumption (combined)	–	–	–	47 MPGe
Typical electric range in everyday driving	–	–	–	–
<b>Dimensions</b>				
Length	191.1 in.	191.1 in.	191.1 in.	191.1 in.
Width (including mirrors)	78.7 (85.2) in.	78.7 (85.2) in.	78.7 (85.2) in.	78.7 (85.2) in.
Height	67.0 in.	67.0 in.	66.5 in.	66.9 in.
Wheelbase	114.0 in.	114.0 in.	114.0 in.	114.0 in.
Luggage compartment volume (VDA)/with rear seats folded	23.66 cu.-ft./ 62.86 cu.-ft. <sup>1</sup>	23.66 cu.-ft./ 62.86 cu.-ft. <sup>1</sup>	23.66 cu.-ft./ 62.86 cu.-ft. <sup>1</sup>	20.48 cu.-ft./ 59.68 cu.-ft.
Tank capacity	26.4 gal.	26.4 gal.	26.4 gal.	21.1 gal.

<sup>1)</sup> In conjunction with adaptive sports seats.

All information regarding features, design, performance, dimensions, weight, fuel consumption, and running costs is correct at the time of print. Porsche reserves the right to alter specifications and other product information without prior notice.

2016 Cayenne S	2016 Cayenne
Premium	Premium
17	19
24	24
20	21
-	-
-	-
191.1 in.	191.1 in.
78.7 (85.2) in.	78.7 (85.2) in.
69.1 in.	69.1 in.
114.0 in.	114.0 in.
23.66 cu.-ft./ 62.86 cu.-ft.	23.66 cu.-ft./ 62.86 cu.-ft. <sup>1</sup>
26.4 gal.	26.4 gal.



## Technical data

	2016 Cayenne Turbo S	2016 Cayenne Turbo	2016 Cayenne GTS	2016 Cayenne S E-Hybrid
<b>Off-road capability</b>				
Wading depth	21.9 in. (air suspension) <sup>2</sup>	21.9 in.	19.0 in. (air suspension) <sup>2</sup>	19.6 in.
Approach angle <sup>1</sup>	29.8° (air suspension) <sup>2</sup>	26.4° (air suspension) <sup>2</sup>	24.8° (steel-spring suspension)	26.3° (steel-spring suspension)
Departure angle <sup>1</sup>	26.7° (air suspension) <sup>2</sup>	23.6° (air suspension) <sup>2</sup>	22.5° (steel-spring suspension)	23.8° (steel-spring suspension)
Ramp-over angle	25.0° (air suspension) <sup>2</sup>	20.0° (air suspension) <sup>2</sup>	19.0° (steel-spring suspension)	20.9° (steel-spring suspension)
<b>Ground clearance with steel-spring suspension<sup>1</sup></b>				
Max. ground clearance	8.5 in.	8.5 in.	8.0 in.	8.5 in.
<b>Ground clearance with air suspension<sup>1</sup></b>				
High Level II	10.7 in.	10.7 in.	10.3 in.	10.6 in.
High Level I	9.5 in.	9.5 in.	9.1 in.	9.4 in.
Normal Level	8.4 in.	8.4 in.	8.0 in.	8.3 in.
Low Level I	7.6 in.	7.6 in.	7.6 in.	7.4 in.
Low Level II	7.2 in.	7.2 in.	7.6 in.	7.0 in.
Loading Level	6.4 in.	6.4 in.	7.1 in.	6.2 in.

<sup>1</sup> At DIN unladen weight, ground clearance at axle center.

<sup>2</sup> High Level II.

All information regarding features, design, performance, dimensions, weight, fuel consumption, and running costs is correct at the time of print. Porsche reserves the right to alter specifications and other product information without prior notice.

2016 Cayenne S	2016 Cayenne
19.6 in.	19.6 in.
26.3° (steel-spring suspension)	25.8° (steel-spring suspension)
23.8° (steel-spring suspension)	23.4° (steel-spring suspension)
20.9° (steel-spring suspension)	20.4° (steel-spring suspension)
8.5 in.	8.5 in.
10.6 in.	10.6 in.
9.4 in.	9.4 in.
8.3 in.	8.3 in.
7.4 in.	7.4 in.
7.0 in.	7.0 in.
6.2 in.	6.2 in.



Ground clearance



Wading depth

## Index

<b>0–9</b>		<b>B</b>		<b>D</b>		<b>L</b>	
3.0-liter V6 engine	36, 108	BOSE® Surround Sound System	76	Daytime running lights	65	Lane Change Assist	70
3.6-liter V6 engine	44, 109	Brake differential	49			Lane Departure Warning	70
3.6-liter twin-turbo V6 engine	26, 39, 108	Braking systems	58	<b>E</b>		LATCH	69
4.8-liter twin-turbo V8 engine	18, 20, 108, 109	Burmester® High-End Surround Sound System	76	Emissions	112	Lightweight construction	60
8-speed Tiptronic S	49			E-mobility	35		
		<b>C</b>		European Delivery	102, 106	<b>M</b>	
<b>A</b>		Cayenne GTS	22			Materials	60
Adaptive Cruise Control with PAS	70	Cayenne S models	29	<b>H</b>		Multifunction sports steering wheel with gearshift paddles	66
Adaptive Sport Seats	66	Cayenne Turbo models	12	Headlights	65		
Air suspension with Porsche Active Suspension Management (PASM)	50	Charging dock	32	HD Radio™ Receiver	15, 30, 76	<b>N</b>	
All-wheel drive	49	Charging equipment	32	High-voltage battery	32	Navigation module	75
Anti-slip regulation	49	Child seats	69				
Auto Start Stop function	49	Coasting	49	<b>I</b>		<b>O</b>	
Automatic hold function	70	Colors	82	Interior	9, 69	Off-road capability	53
		Comfort lighting package	69	Internet	79	Off-road control	53
		Comfort memory package	66			Onboard charger (7.2 kW)	32
		Comfort Seats	66			Online services	79
		Cornering lights	65			Optional equipment	90
		Cruise control	70				

<b>P</b>		<b>R</b>		<b>T</b>	
Panorama	106	Porsche Dynamic Chassis Control (PDCC)	50	Rear seats	69
ParkAssist	72	Porsche Dynamic Light System (PDLS)	65	Recuperative braking system	36
Parking brake (electric)	58	Porsche Dynamic Light System Plus (PDLS Plus)	65	Recycling	60
Performance Start	53	Porsche Exclusive	104	Reversing camera	72
Plug-in hybrid technology	32	Porsche Rear Seat Entertainment	79	<b>S</b>	
Porsche Active Safe (PAS)	70	Porsche Stability Management (PSM)	53	Seats	66, 69
Porsche Active Suspension Management (PASM)	50	Porsche Torque Vectoring Plus (PTV Plus)	50	SiriusXM® Satellite Radio Receiver	76
Porsche Car Configurator	91	Porsche Traction Management	49	Soft-close doors	66
Porsche Car Connect (PCC)	35	Porsche universal charger (AC) with charging dock	32	Sport Chrono Package	53
Porsche Ceramic Composite Brake (PCCB)	58			Sport Plus button	53
Porsche Communication Management (PCM)	75			Sport tailpipes	92, 105
				Steel-spring suspension	50
				Storage bins	69
				Surround View (camera system)	72
				Sustainability	60
				<b>U</b>	
				Universal audio interface	75, 79
				<b>W</b>	
				Wheels	54



Porsche Cars North America, Inc.  
One Porsche Drive  
Atlanta, Georgia 30354-1654



Dr. Ing. h.c. F. Porsche AG is the owner of numerous trademarks, both registered and unregistered, including without limitation the Porsche Crest®, Porsche®, Boxster®, Carrera®, Cayenne®, Cayman®, Macan®, 718®, Panamera®, Speedster®, Spyder®, Tiptronic®, VarioCam®, PCM®, PDK®, 911®, RS®, 4S®, 918 Spyder®, FOUR UNCOMPROMISED®, and the model numbers and distinctive shapes of the Porsche automobiles such as, the federally registered 911 and Boxster automobiles. The third party trademarks contained herein are the properties of their respective owners. Porsche Cars North America, Inc. believes the specifications to be correct at the time of printing. However, specifications, standard equipment and options are subject to change without notice. Some options may be unavailable when a car is built. Some vehicles may be shown with non-U.S. equipment. Please ask your authorized Porsche dealer for advice concerning the current availability of options and verify the optional equipment that you ordered. Porsche recommends seat belt usage and observance of traffic laws at all times.

All fuel consumption and emissions data contained herein are derived from U.S. tests and were accurate at time of press.