



Viewz
BY **DANUBE**

FURNISHED BY



OFFICIAL PARTNER

Floor Plans



Dubai's First Iconic Towers with ASTON MARTIN Furnished Interiors



OFFICIAL PARTNER

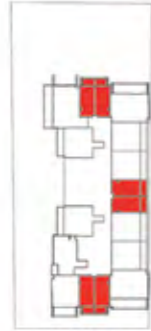




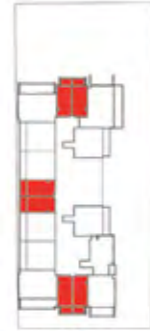
1. All Information, materials, plans and amenities are approximate and provided for illustrative purposes only. The developer reserves the right to make revisions to the floor plans and any features, materials, dimensions, drawings, and amenities of the project without notice.
2. Units areas, actual dimensions, layout, location, specifications of balcony, door, wardrobe or other fixtures may vary floor to floor and between units and are subject to revision by the developer.
3. Furniture and electric devices will not be provided by the developer, unless specified otherwise in the Unit Sale Purchase Agreement.



FLOOR : 2 - 21 (Typ)

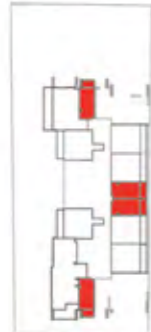


VIEWZ 1



VIEWZ 2

FLOOR : 23



VIEWZ 1

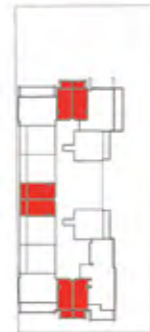


VIEWZ 2

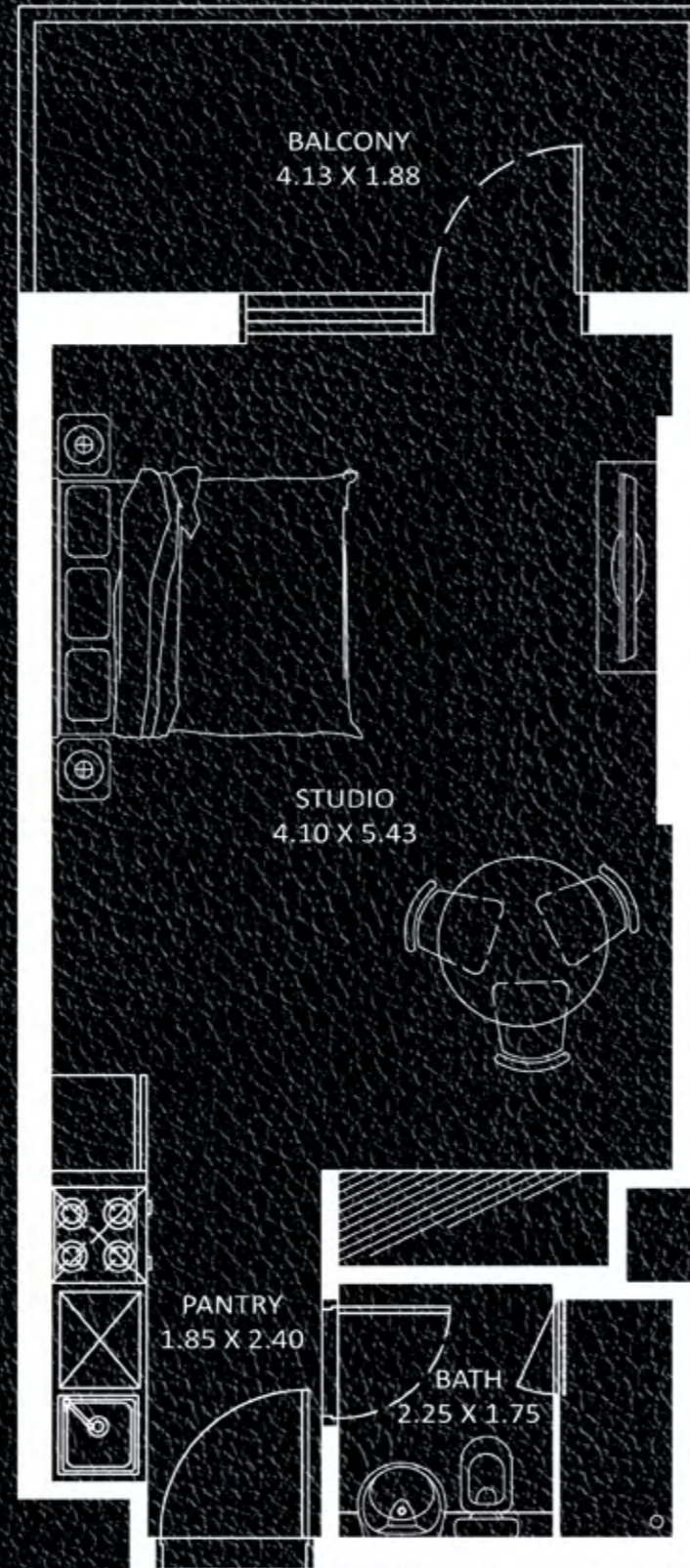
FLOOR : 24 - 35 (Typ)



VIEWZ 1



VIEWZ 2



STUDIO TYPE - A

AREA in Sq.Ft :

Apartment	335 to 336
Balcony	66 to 84
Total	401 to 420

UNITS in VIEWZ 1 :

FLOOR :	UNIT Nos :
2 - 21 (Typ)	(204-205) (#209-#210) (214-215) to (2104-2105) (#2109-#2110) (2114-2115)
23	(2303) (#2306-#2307) (2310)
24 - 35 (Typ)	(2403-2404) (#2408-#2409) (2413-2414) to (3503-3504) (#3508-#3509) (3513-3514)

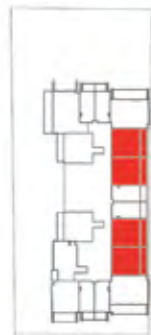
UNITS in VIEWZ 2 :

FLOOR :	UNIT Nos :
2 - 21 (Typ)	(204-205) (#209-#210) (214-215) to (2104-2105) (#2109-#2110) (2114-2115)
23	(2303) (#2306-#2307) (2310)
24 - 35 (Typ)	(2403-2404) (#2408-#2409) (2413-2414) to (3503-3504) (#3508-#3509) (3513-3514)

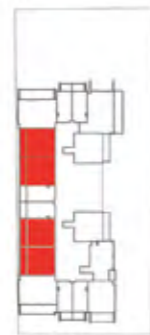
Balcony Area in 84 Sq.Ft



FLOOR : 2 - 21 (Typ)

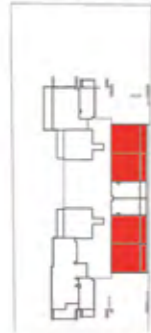


VIEWZ 1

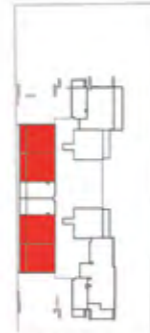


VIEWZ 2

FLOOR : 23

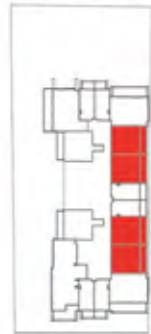


VIEWZ 1

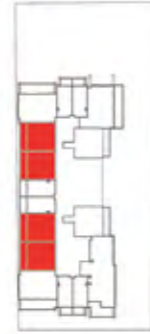


VIEWZ 2

FLOOR : 24 - 25 (Typ)

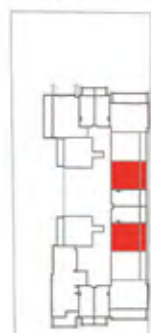


VIEWZ 1



VIEWZ 2

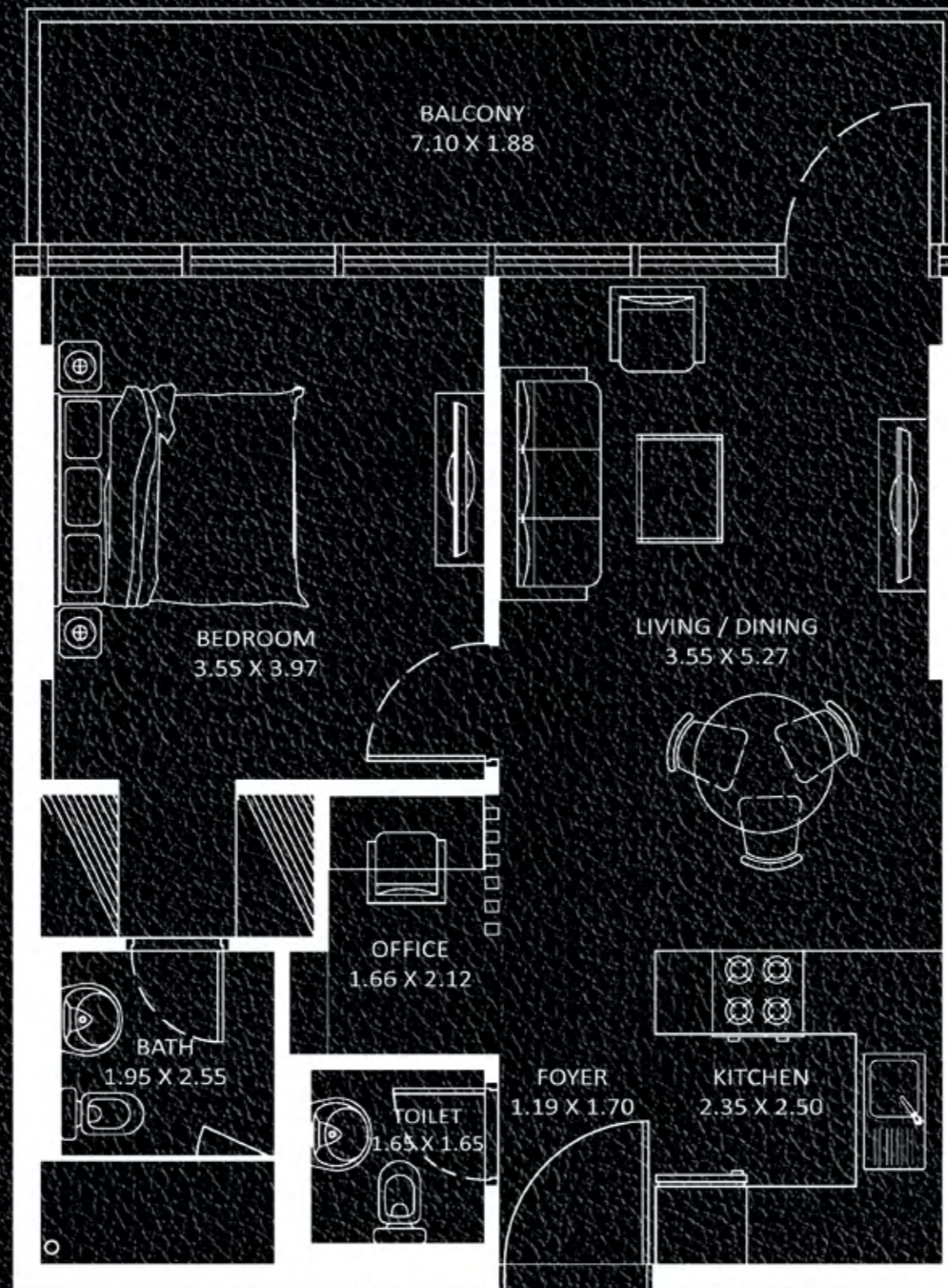
FLOOR : 26 - 35 (Typ)



VIEWZ 1



VIEWZ 2



1 BEDROOM TYPE - A

AREA in Sq.Ft :

Apartment	594
Balcony	143
Total	737

UNITS in VIEWZ 1 :

FLOOR :	UNIT Nos :
2 - 21 (Typ)	(207-208) (211-212) to (2107-2108) (2111-2112)
23	(2304-2305) (2308-2309)
24 - 25 (Typ)	(2406-2407) (2410-2411) to (2506-2507) (2510-2511)
26 - 35 (Typ)	(2607) (2610) to (3507) (3510)

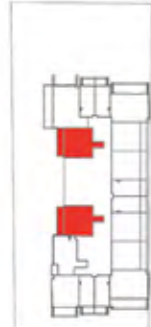
UNITS in VIEWZ 2 :

FLOOR :	UNIT Nos :
2 - 21 (Typ)	(207-208) (211-212) to (2107-2108) (2111-2112)
23	(2304-2305) (2308-2309)
24 - 25 (Typ)	(2406-2407) (2410-2411) to (2506-2507) (2510-2511)
26 - 35 (Typ)	(2607) (2610) to (3507) (3510)

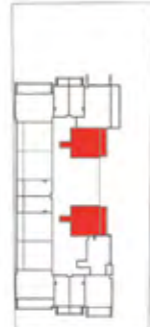
FEATURES : Office



FLOOR : 2 - 21 (Typ)

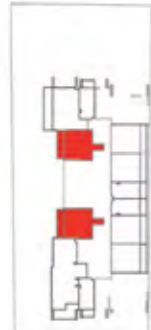


VIEWZ 1

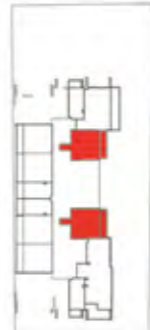


VIEWZ 2

FLOOR : 23

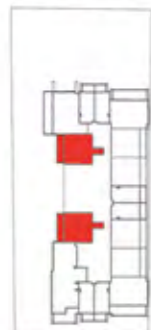


VIEWZ 1

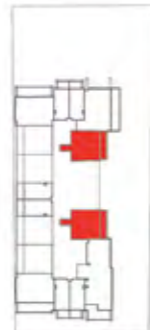


VIEWZ 2

FLOOR : 24 - 35 (Typ)



VIEWZ 1



VIEWZ 2



1 BEDROOM TYPE - B

AREA in Sq.Ft :

Apartment	665
Balcony	142
Total	807

UNITS in VIEWZ 1 :

FLOOR :	UNIT Nos :
2 - 21 (Typ)	(201) (217) to (2101) (2117)
23	(2301) (2312)
24 - 35 (Typ)	(2401) (2416) to (3501) (3516)

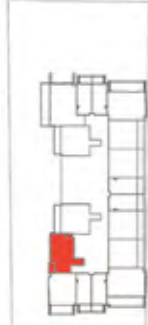
UNITS in VIEWZ 2 :

FLOOR :	UNIT Nos :
2 - 21 (Typ)	(201) (217) to (2101) (2117)
23	(2301) (2312)
24 - 35 (Typ)	(2401) (2416) to (3501) (3516)

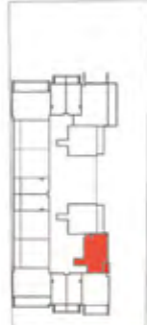
FEATURES : Office



FLOOR : 2 - 21 (Typ)



VIEWZ 1



VIEWZ 2



1 BEDROOM TYPE - C

AREA in Sq.Ft :

Apartment	670
Balcony	47
Total	717

UNITS in VIEWZ 1 :

FLOOR :	UNIT Nos :
2 - 21 (Typ)	(202) to (2102)

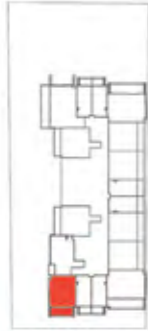
UNITS in VIEWZ 2 :

FLOOR :	UNIT Nos :
2 - 21 (Typ)	(202) to (2102)

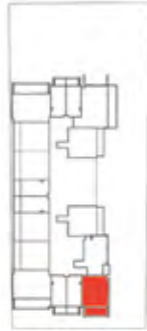
FEATURES : Multi Purpose Room



FLOOR : 2 - 21 (Typ)



VIEWZ 1



VIEWZ 2



PRESIDENTIAL SUITE TYPE - D

AREA in Sq.Ft :

Apartment	616
Balcony	147
Total	763

UNITS in VIEWZ 1 :

FLOOR :	UNIT Nos :
2 - 21 (Typ)	(203) to (2103)

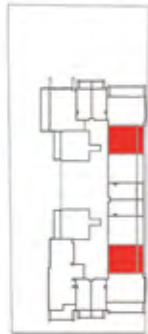
UNITS in VIEWZ 2 :

FLOOR :	UNIT Nos :
2 - 21 (Typ)	(203) to (2103)

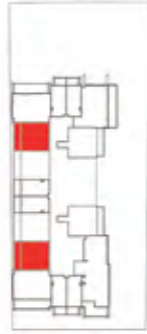
FEATURES : Pool Office



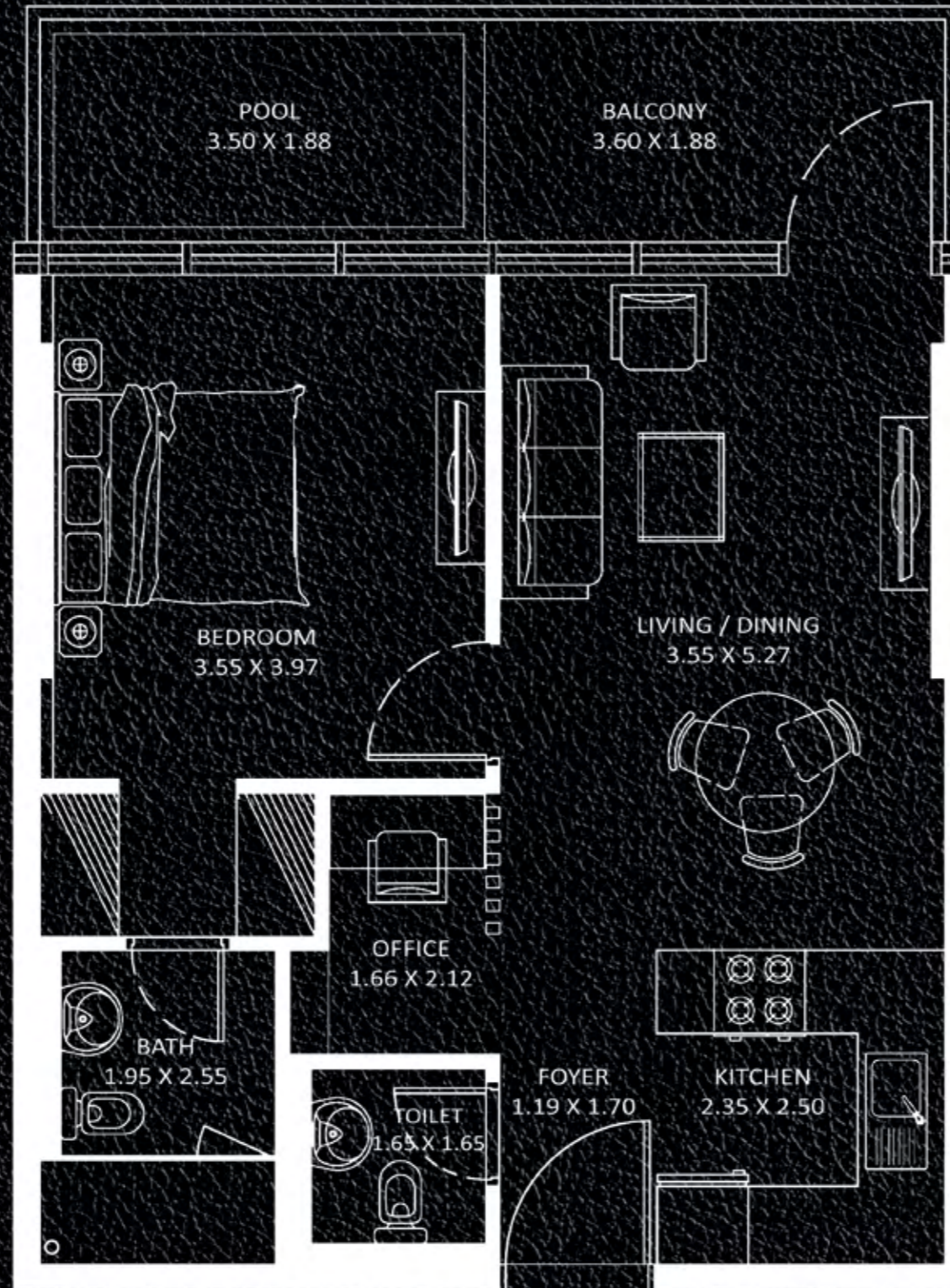
FLOOR : 26 - 35 (Typ)



VIEWZ 1



VIEWZ 2



PRESIDENTIAL SUITE TYPE - E

AREA in Sq.Ft :

Apartment	594
Balcony	143
Total	737

UNITS in VIEWZ 1 :

FLOOR :	UNIT Nos :
26 - 35 (Typ)	(2606) (2611) to (3506) (3511)

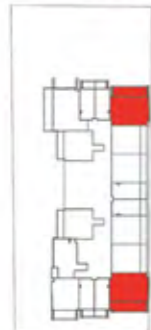
UNITS in VIEWZ 2 :

FLOOR :	UNIT Nos :
26 - 35 (Typ)	(2606) (2611) to (3506) (3511)

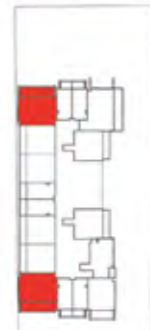
FEATURES : Pool Office



FLOOR : 2 - 21 (Typ)

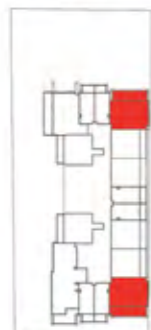


VIEWZ 1

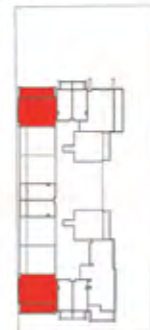


VIEWZ 2

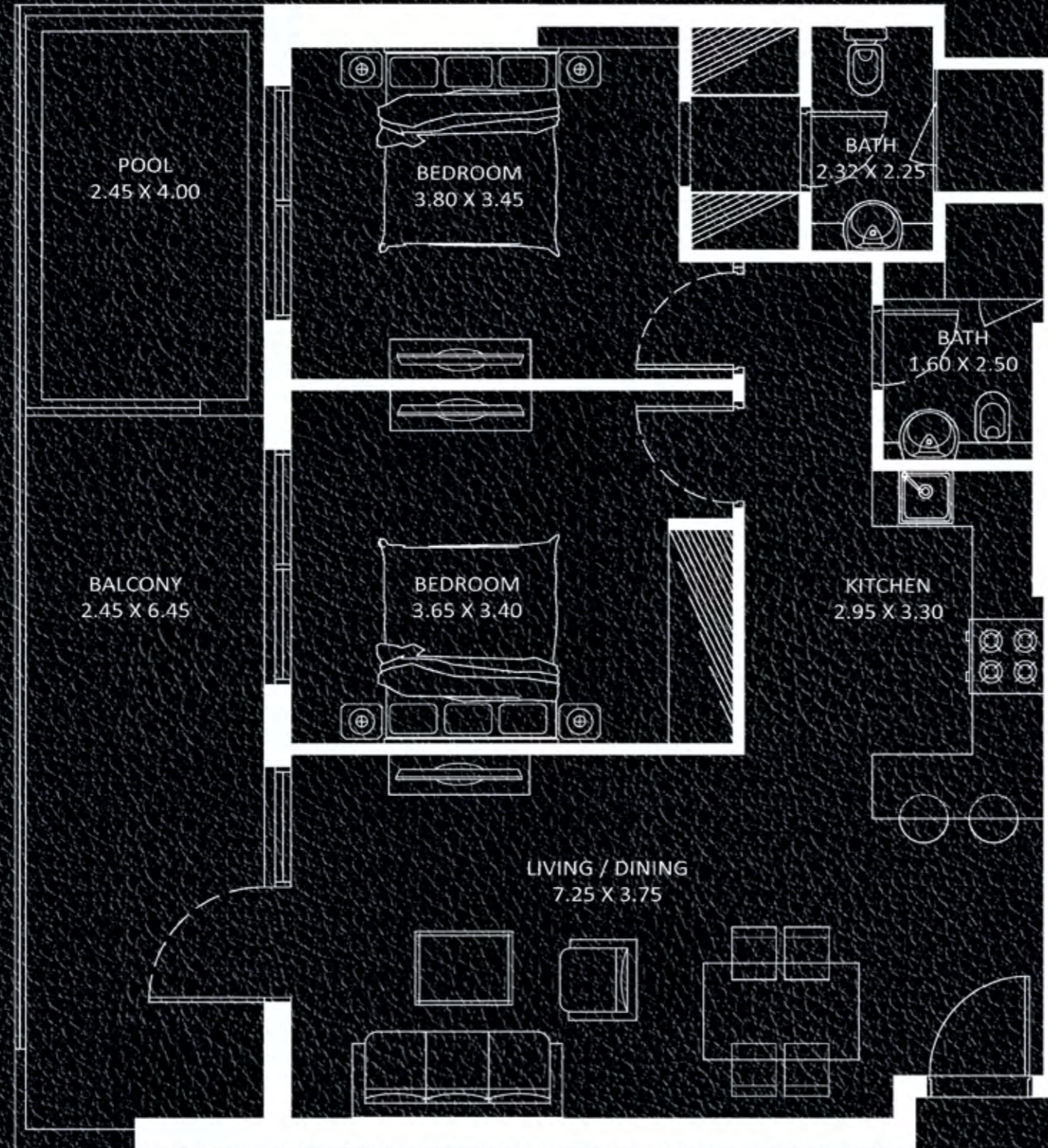
FLOOR : 24 - 35 (Typ)



VIEWZ 1



VIEWZ 2



2 BEDROOM TYPE - A

AREA in Sq.Ft :

Apartment	801
Balcony	250 to 260
Total	1,051 to 1,061

UNITS in VIEWZ 1 :

FLOOR :	UNIT Nos :
2 - 21 (Typ)	(206) (213) to (2106) (2113)
24 - 35 (Typ)	(2405) (2412) to (3505) (3512)

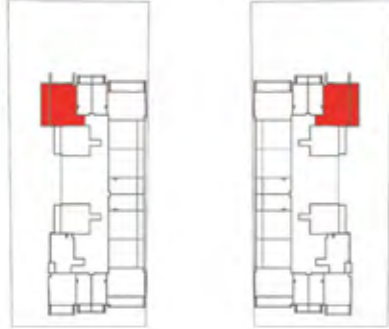
UNITS in VIEWZ 2 :

FLOOR :	UNIT Nos :
2 - 21 (Typ)	(206) (213) to (2106) (2113)
24 - 35 (Typ)	(2405) (2412) to (3505) (3512)

FEATURES : Pool



FLOOR : 2 - 21 (Typ)



FLOOR : 23



VIEWZ 1

VIEWZ 2

FLOOR : 24 - 35 (Typ)



VIEWZ 1

VIEWZ 2



2 BEDROOM TYPE - B

AREA in Sq.Ft :

Apartment	874
Balcony	278
Total	1,152

UNITS in VIEWZ 1 :

FLOOR :	UNIT Nos :
2 - 21 (Typ)	(216) to (2116)
23	2311
24 - 35 (Typ)	(2415) to (3515)

UNITS in VIEWZ 2 :

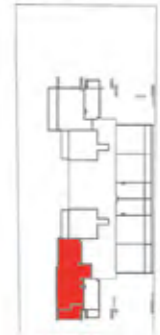
FLOOR :	UNIT Nos :
2 - 21 (Typ)	(216) to (2116)
23	2311
24 - 35 (Typ)	(2415) to (3515)

FEATURES : Pool Study

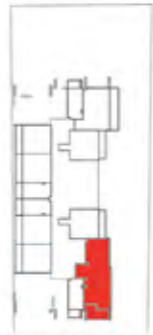


3 BEDROOM TYPE - A

FLOOR : 23

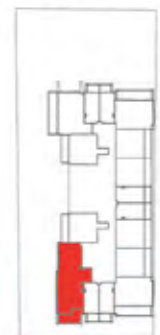


VIEWZ 1

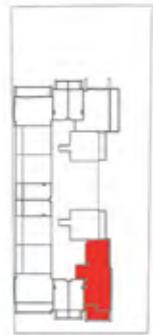


VIEWZ 2

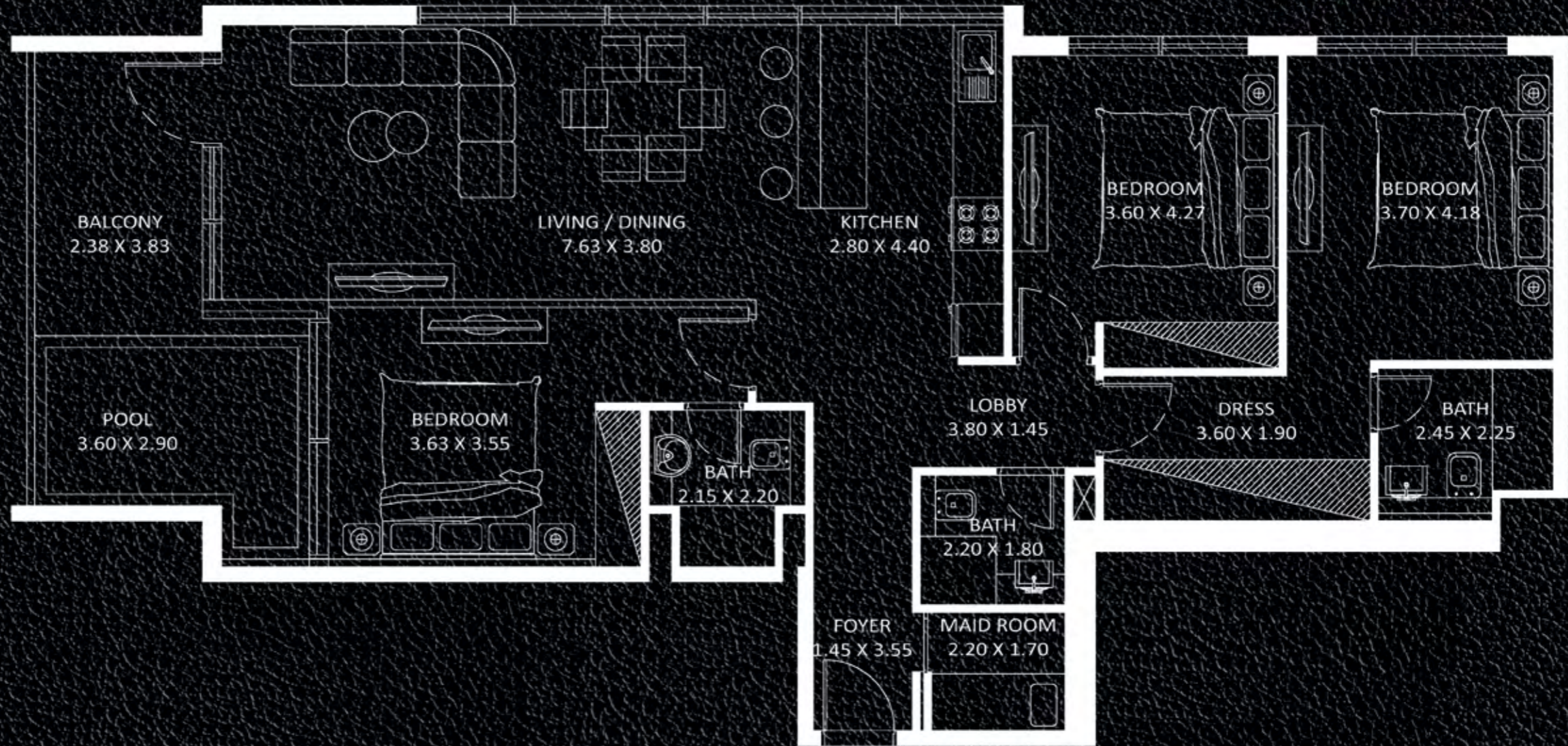
FLOOR : 24 - 35 (Typ)



VIEWZ 1



VIEWZ 2



AREA in Sq.Ft :	
Apartment	1,342
Balcony	210
Total	1,552

UNITS in VIEWZ 1 :	
FLOOR :	UNIT Nos :
23	(2302)
24 - 35 (Typ)	(2402) to (3502)

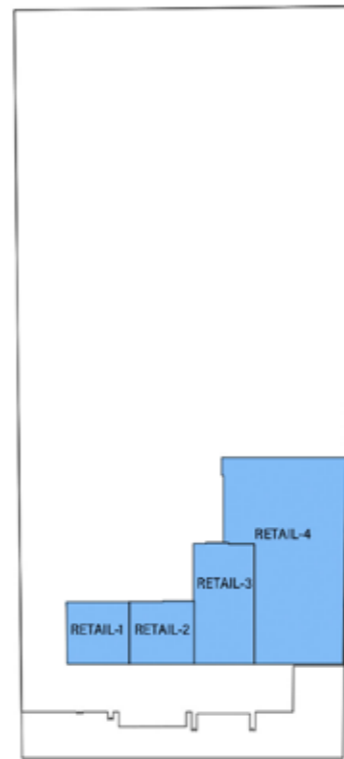
UNITS in VIEWZ 1 :	
FLOOR :	UNIT Nos :
23	(2302)
24 - 35 (Typ)	(2402) to (3502)

FEATURES : Pool Maid Room

Ground Floor

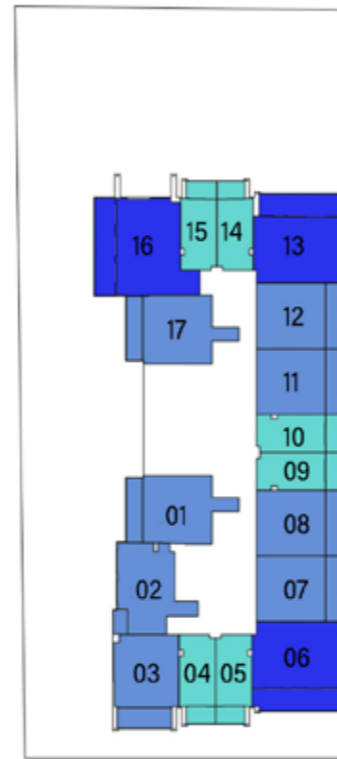


VIEWZ 1

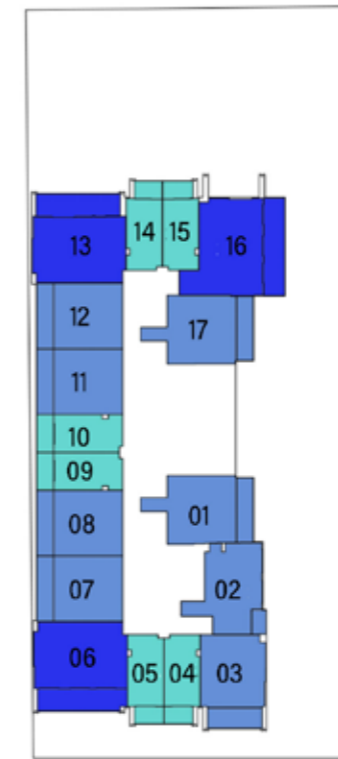


VIEWZ 2

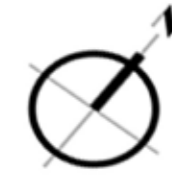
Floor 2 to 21 (Typ)



VIEWZ 1

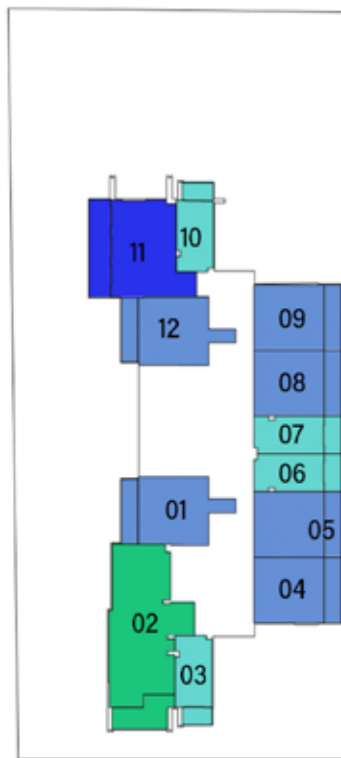


VIEWZ 2

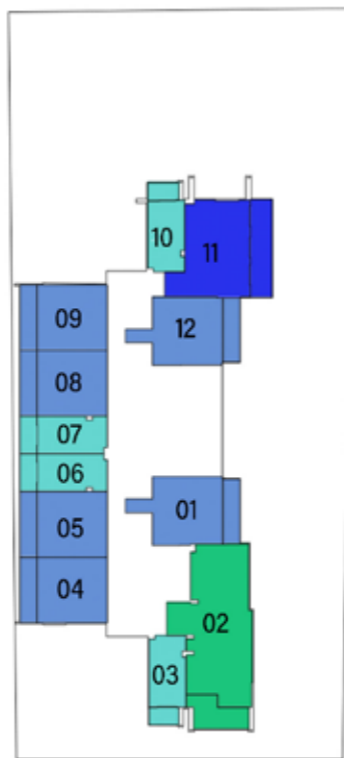


- RETAIL
- STUDIO
- 1 BEDROOM
- 2 BEDROOM
- 3 BEDROOM

Floor 23

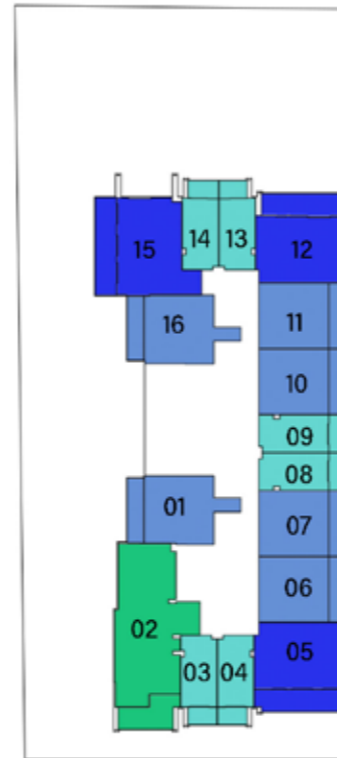


VIEWZ 1

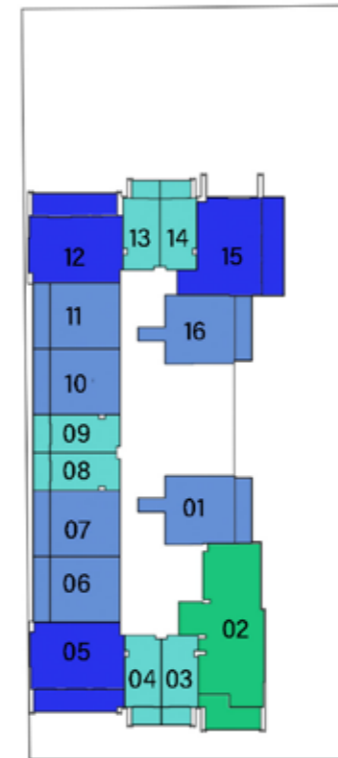


VIEWZ 2

Floor 24 to 35 (Typ)



VIEWZ 1



VIEWZ 2



LEGEND

1. Swimming Pool
2. Kids Pool
3. Aquatic GYM
4. Kids Play Area
5. Mini Golf
6. Cycling Track
7. Open Air Yoga
8. Outdoor GYM
9. Indoor Gym
10. Chessboard
11. Open Jacuzzi
12. Library
13. Business Center
14. Doctor On Call
15. Snooker Table
16. Table Tennis Zone

AMENITIES - VIEWZ 1



Dubai's First Iconic Towers
with
ASTON MARTIN
Furnished Interiors



OFFICIAL PARTNER



LEGEND

- 17. Swimming Pool
- 18. Kids Pool
- 19. Open Air Floating Cinema
- 20. BBQ Area
- 21. Multi Purpose Hall
- 22. Jogging Track
- 23. Half Basketball Court
- 24. Tennis Court
- 25. Cricket Pitch
- 26. Multi Purpose Court
- 27. Kids Play Area
- 28. Kids Day Care
- 29. Beauty Salon
- 30. SPA Center
- 31. Indoor Gym
- 32. Japanese Garden
- 33. Kids Splash Pad
- 34. Rain Shower Area
- 35. Cigar Lounge

AMENITIES - VIEWZ 2



Dubai's First Iconic Towers
with
ASTON MARTIN
Furnished Interiors

 **FORMITALIA**
OFFICIAL PARTNER

LAKE VIEW



CITY VIEW



TOWN VIEW

ISLAND VIEW

